

Data Path : Z:\pestpcbsrv\HPCHEM1\ECD_S\Data\PS081525\
 Data File : PS031469.D
 Signal(s) : Signal #1: ECD1A.ch Signal #2: ECD2B.ch
 Acq On : 15 Aug 2025 23:30
 Operator : AR\AJ
 Sample : Q2836-07
 Misc :
 ALS Vial : 16 Sample Multiplier: 1

Instrument :
 ECD_S
 ClientSampleId :
 WC-A2-16-C

Integration File signal 1: autoint1.e
 Integration File signal 2: autoint2.e
 Quant Time: Aug 18 03:51:24 2025
 Quant Method : Z:\pestpcbsrv\HPCHEM1\ECD_S\Method\PS080725.M
 Quant Title : 8080.M
 QLast Update : Fri Aug 08 03:17:54 2025
 Response via : Initial Calibration
 Integrator: ChemStation

Volume Inj. : 1 µl
 Signal #1 Phase : ZB-MR2 Signal #2 Phase: ZB-MR2
 Signal #1 Info : 30M x 0.32mm x0.5 Signal #2 Info : 30M x 0.32mm x 0.25µm

Compound	RT#1	RT#2	Resp#1	Resp#2	ng/ml	ng/ml
System Monitoring Compounds						
4) S 2,4-DCAA	7.289	7.742	2256.8E6	706.7E6	711.037	835.979
Target Compounds						
1) T Dalapon	2.639f	2.662f	352.2E6	234.2E6	67.107	88.005 #
2) T 3,5-DICHL...	6.493f	6.709	11039433	19110115	2.340	14.135 #
3) T 4-Nitroph...	7.115	7.305	2473500	8992664	2.398	7.155 #
5) T DICAMBA	7.475	7.969	8262982	8881596	<MDL	1.563 #
6) T MCPP	7.689f	8.061	25486014	28178486	3.168	15.940 #
7) T MCPA	0.000	8.259f	0	105.2E6	N.D.	37.497
8) T DICHLORPROP	8.231f	8.643	50959685	10409862	16.063	7.797 #
9) T 2,4-D	0.000	9.028	0	12593637	N.D.	8.823
10) T Pentachlo...	8.712	9.511	55522410	39746698	1.156	1.141
11) T 2,4,5-TP ...	9.273f	9.880	37228960	39091727	2.077	2.980 #
12) T 2,4,5-T	9.595	0.000	83569036	0	5.704	N.D. #
13) T 2,4-DB	10.172	10.887	69662978	77520013	36.250	80.344 #
14) T DINOSEB	11.350	11.286	19626945	3271803	1.548	<MDL #
15) T Picloram	11.163f	0.000	19187875	0	1.470	N.D. #
16) T DCPA	0.000	12.313	0	84886740	N.D.	4.309

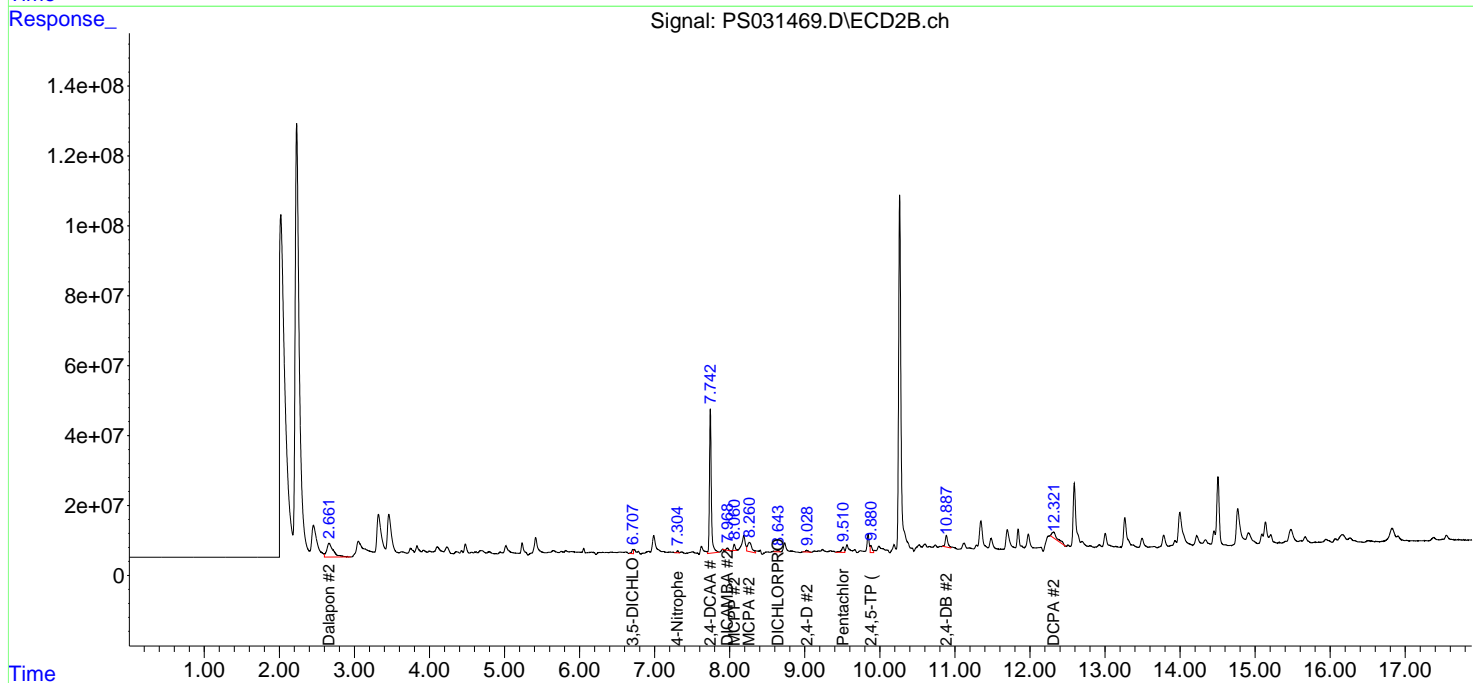
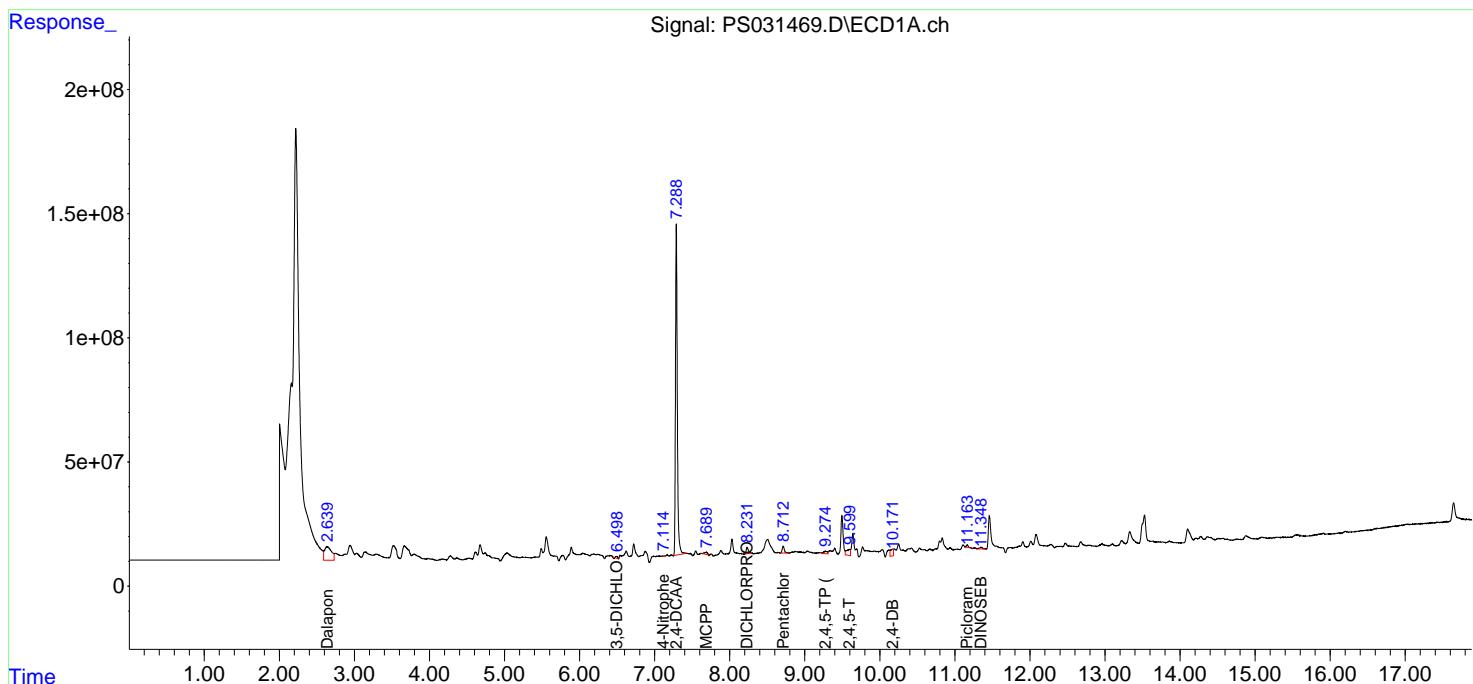
(f)=RT Delta > 1/2 Window (#)=Amounts differ by > 25% (m)=manual int.

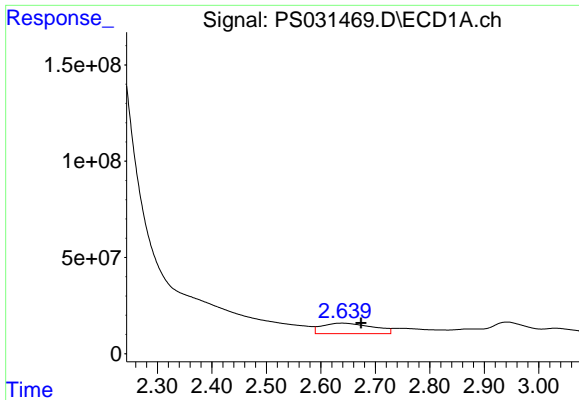
Data Path : Z:\pestpcbsrv\HPCHEM1\ECD_S\Data\PS081525\
 Data File : PS031469.D
 Signal(s) : Signal #1: ECD1A.ch Signal #2: ECD2B.ch
 Acq On : 15 Aug 2025 23:30
 Operator : AR\AJ
 Sample : Q2836-07
 Misc :
 ALS Vial : 16 Sample Multiplier: 1

Instrument :
 ECD_S
 ClientSampleId :
 WC-A2-16-C

Integration File signal 1: autoint1.e
 Integration File signal 2: autoint2.e
 Quant Time: Aug 18 03:51:24 2025
 Quant Method : Z:\pestpcbsrv\HPCHEM1\ECD_S\Method\PS080725.M
 Quant Title : 8080.M
 QLast Update : Fri Aug 08 03:17:54 2025
 Response via : Initial Calibration
 Integrator: ChemStation

Volume Inj. : 1 µl
 Signal #1 Phase : ZB-MR1 Signal #2 Phase: ZB-MR2
 Signal #1 Info : 30M x 0.32mm x0.5 Signal #2 Info : 30M x 0.32mm x 0.25µm

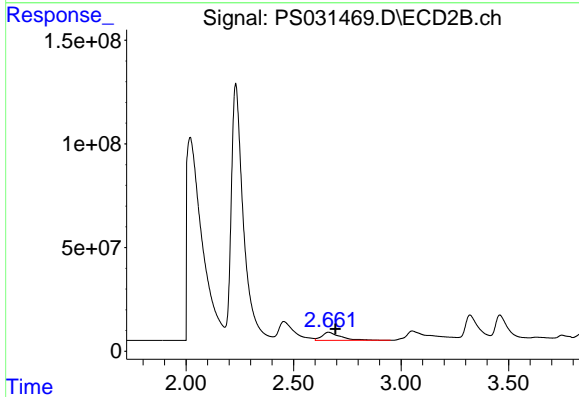




#1 Dalapon

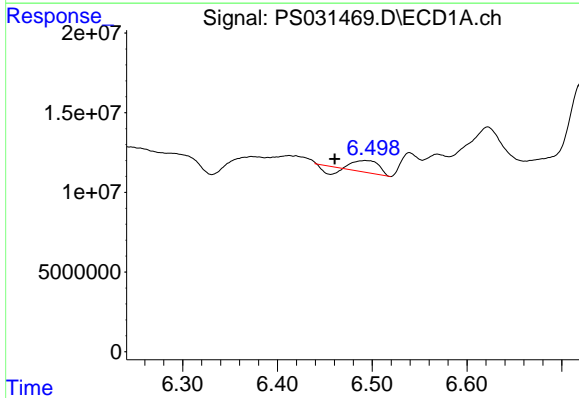
R.T.: 2.639 min
 Delta R.T.: -0.035 min
 Response: 352241877
 Conc: 67.11 ng/ml

Instrument :
 ECD_S
 ClientSampleId :
 WC-A2-16-C



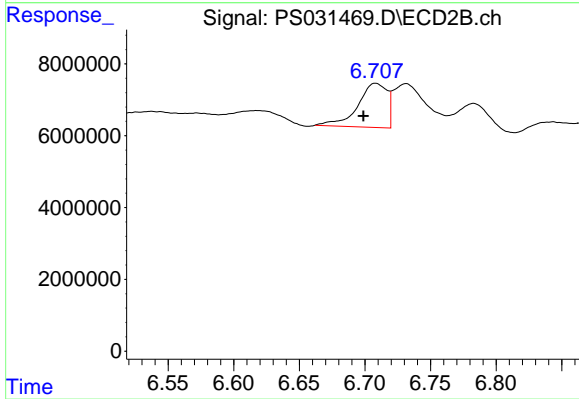
#1 Dalapon

R.T.: 2.662 min
 Delta R.T.: -0.033 min
 Response: 234182675
 Conc: 88.01 ng/ml



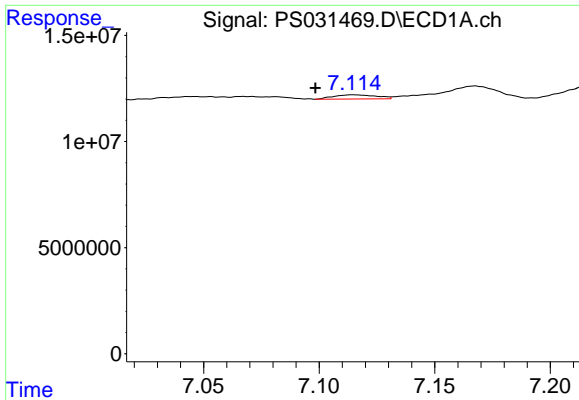
#2 3,5-DICHLOROBENZOIC ACID

R.T.: 6.493 min
 Delta R.T.: 0.032 min
 Response: 11039433
 Conc: 2.34 ng/ml



#2 3,5-DICHLOROBENZOIC ACID

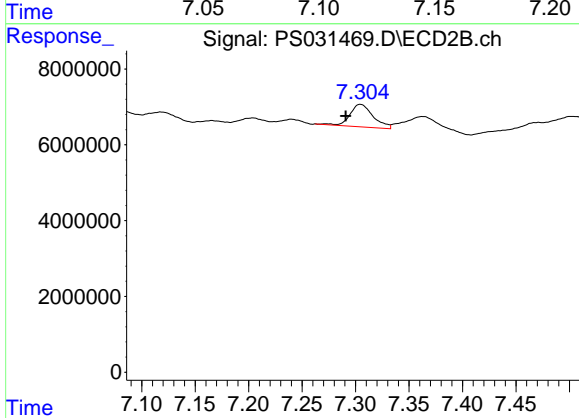
R.T.: 6.709 min
 Delta R.T.: 0.010 min
 Response: 19110115
 Conc: 14.14 ng/ml



#3 4-Nitrophenol

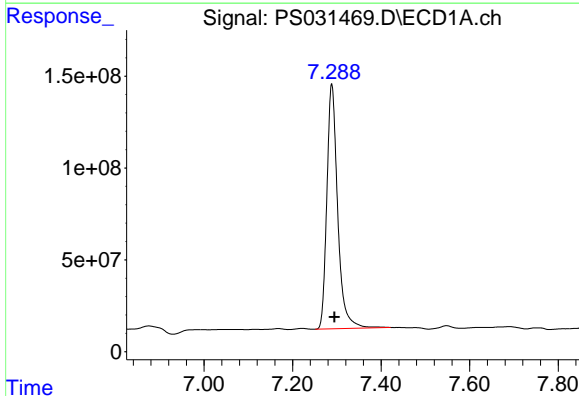
R.T.: 7.115 min
 Delta R.T.: 0.016 min
 Response: 2473500
 Conc: 2.40 ng/ml

Instrument :
 ECD_S
 ClientSampleId :
 WC-A2-16-C



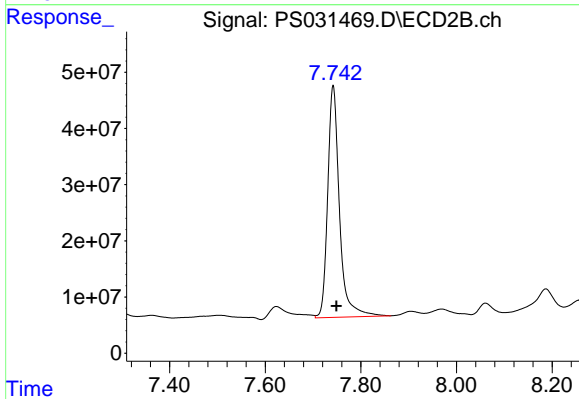
#3 4-Nitrophenol

R.T.: 7.305 min
 Delta R.T.: 0.014 min
 Response: 8992664
 Conc: 7.15 ng/ml



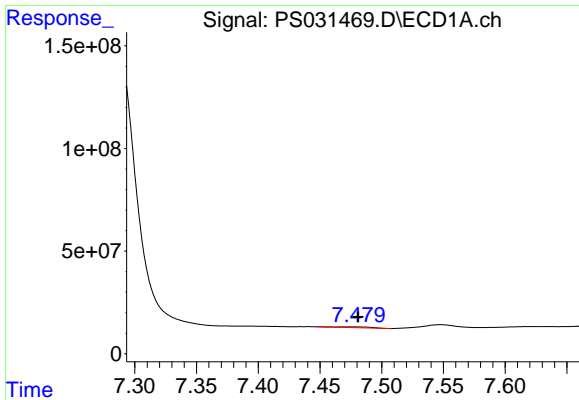
#4 2,4-DCAA

R.T.: 7.289 min
 Delta R.T.: -0.006 min
 Response: 2256823321
 Conc: 711.04 ng/ml



#4 2,4-DCAA

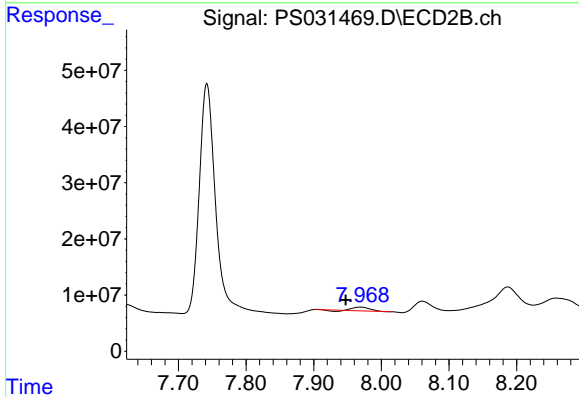
R.T.: 7.742 min
 Delta R.T.: -0.007 min
 Response: 706686115
 Conc: 835.98 ng/ml



#5 DICAMBA

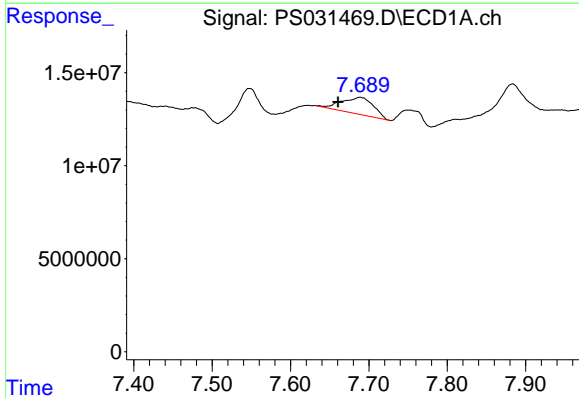
R.T.: 7.475 min
 Delta R.T.: -0.006 min
 Response: 8262982
 Conc: N.D.

Instrument :
 ECD_S
 ClientSampleId :
 WC-A2-16-C



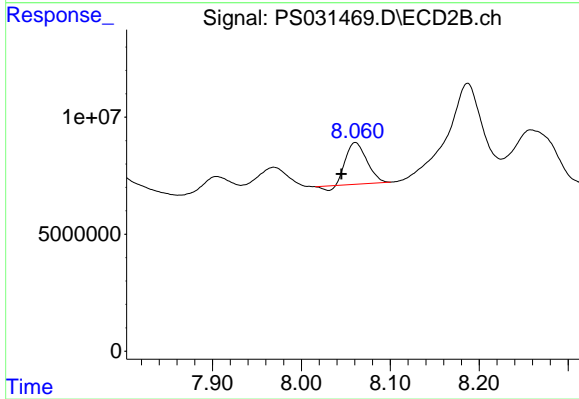
#5 DICAMBA

R.T.: 7.969 min
 Delta R.T.: 0.022 min
 Response: 8881596
 Conc: 1.56 ng/ml



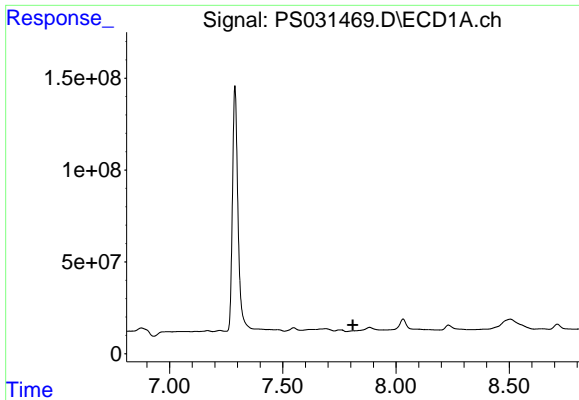
#6 MCP

R.T.: 7.689 min
 Delta R.T.: 0.028 min
 Response: 25486014
 Conc: 3.17 ug/ml



#6 MCP

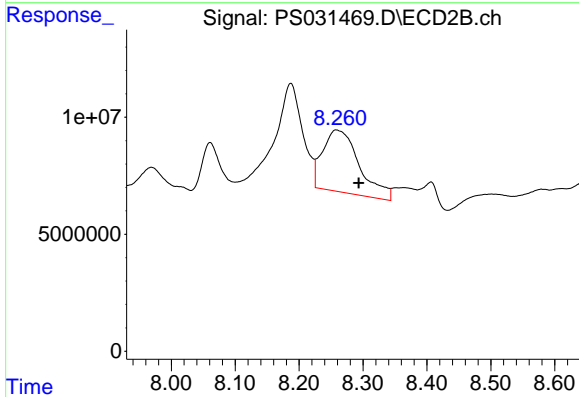
R.T.: 8.061 min
 Delta R.T.: 0.016 min
 Response: 28178486
 Conc: 15.94 ug/ml



#7 MCPA

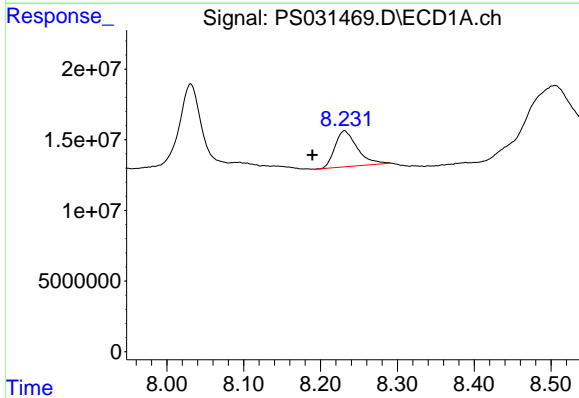
R.T.: 0.000 min
 Exp R.T.: 7.809 min
 Response: 0
 Conc: N.D.

Instrument :
 ECD_S
 ClientSampleId :
 WC-A2-16-C



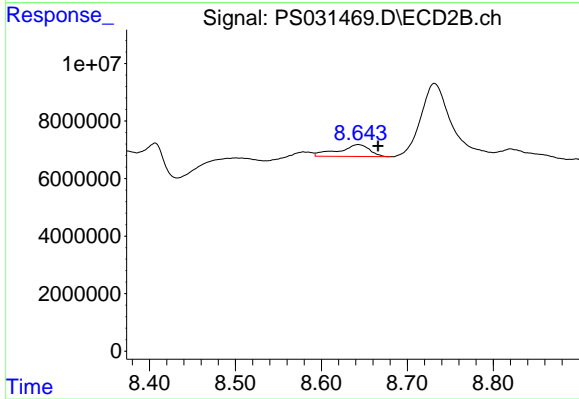
#7 MCPA

R.T.: 8.259 min
 Delta R.T.: -0.034 min
 Response: 105198666
 Conc: 37.50 ug/ml



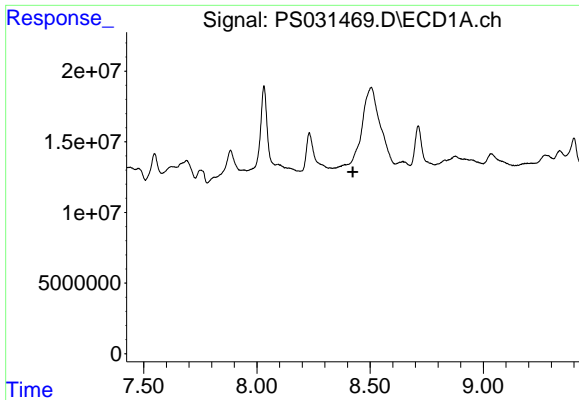
#8 DICHLORPROP

R.T.: 8.231 min
 Delta R.T.: 0.042 min
 Response: 50959685
 Conc: 16.06 ng/ml



#8 DICHLORPROP

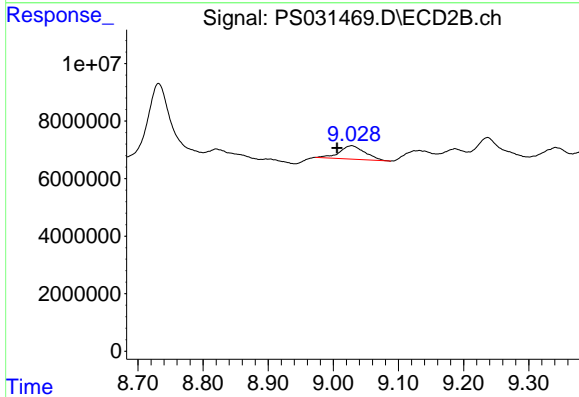
R.T.: 8.643 min
 Delta R.T.: -0.023 min
 Response: 10409862
 Conc: 7.80 ng/ml



#9 2,4-D

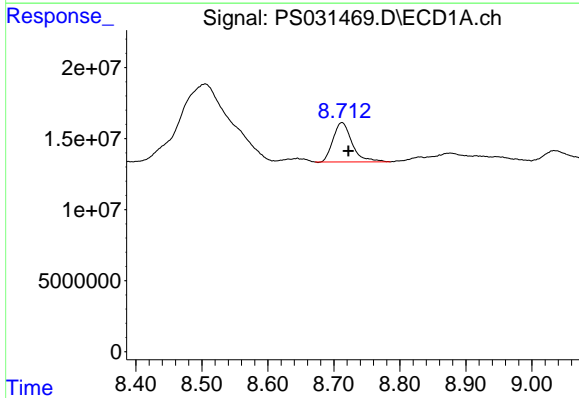
R.T.: 0.000 min
 Exp R.T.: 8.424 min
 Response: 0
 Conc: N.D.

Instrument :
 ECD_S
 ClientSampleId :
 WC-A2-16-C



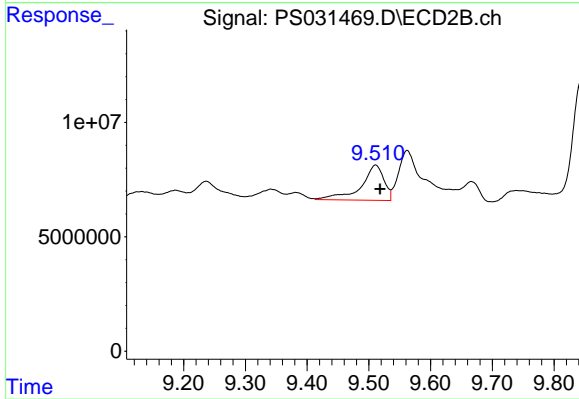
#9 2,4-D

R.T.: 9.028 min
 Delta R.T.: 0.022 min
 Response: 12593637
 Conc: 8.82 ng/ml



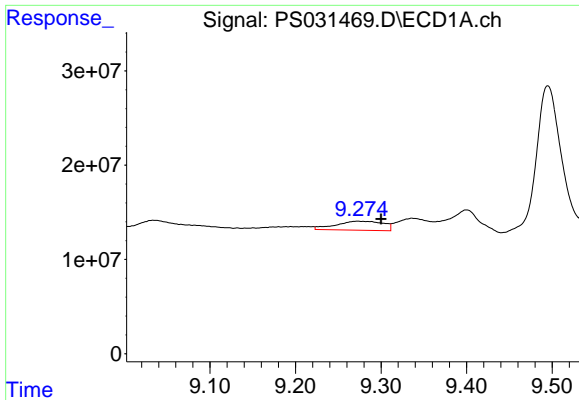
#10 Pentachlorophenol

R.T.: 8.712 min
 Delta R.T.: -0.010 min
 Response: 55522410
 Conc: 1.16 ng/ml



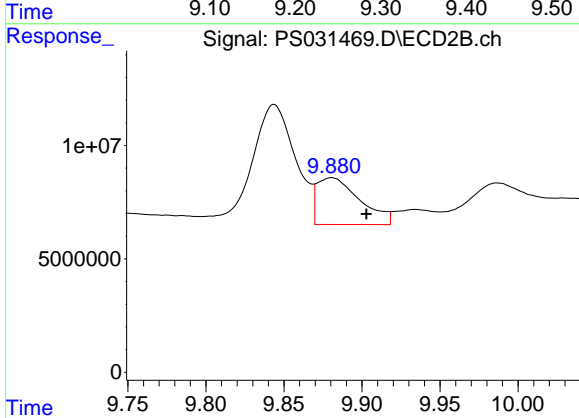
#10 Pentachlorophenol

R.T.: 9.511 min
 Delta R.T.: -0.008 min
 Response: 39746698
 Conc: 1.14 ng/ml

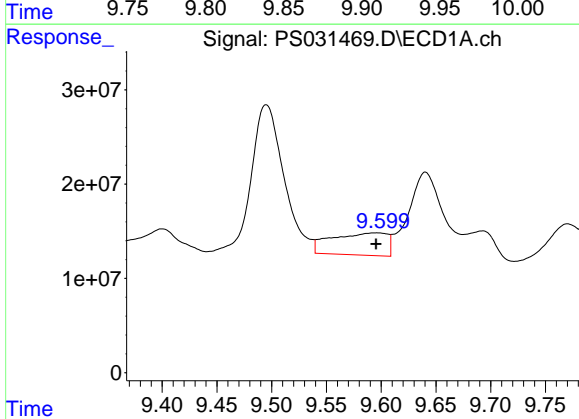


#11 2,4,5-TP (SILVEX)
 R.T.: 9.273 min
 Delta R.T.: -0.027 min
 Response: 37228960
 Conc: 2.08 ng/ml

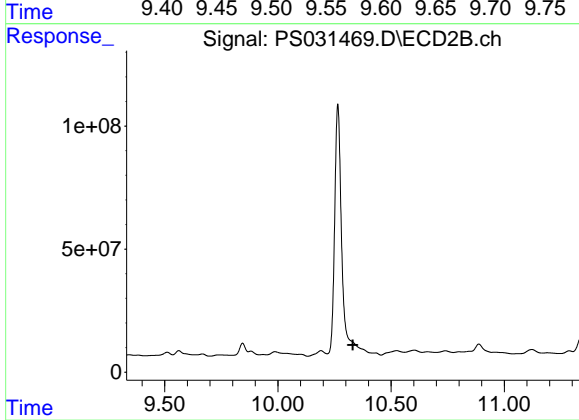
Instrument :
 ECD_S
 ClientSampleId :
 WC-A2-16-C



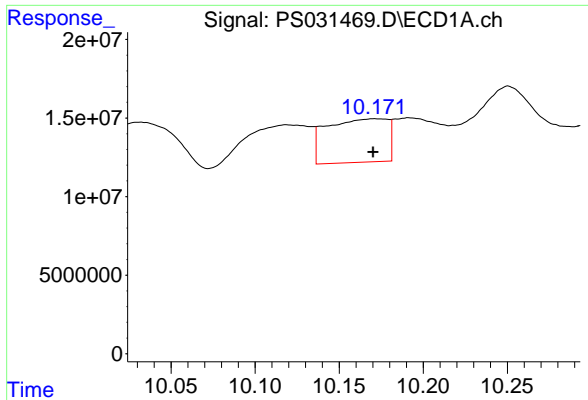
#11 2,4,5-TP (SILVEX)
 R.T.: 9.880 min
 Delta R.T.: -0.022 min
 Response: 39091727
 Conc: 2.98 ng/ml



#12 2,4,5-T
 R.T.: 9.595 min
 Delta R.T.: 0.000 min
 Response: 83569036
 Conc: 5.70 ng/ml



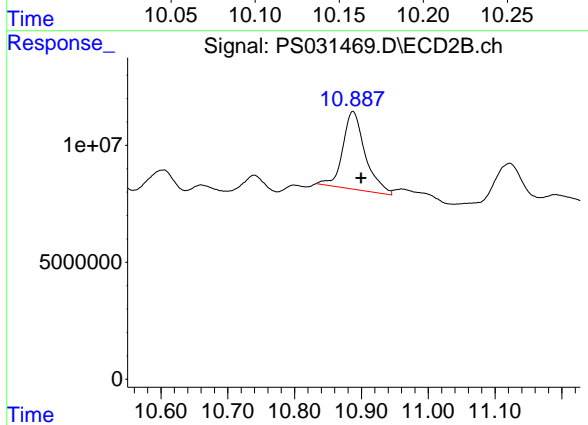
#12 2,4,5-T
 R.T.: 0.000 min
 Exp R.T. : 10.331 min
 Response: 0
 Conc: N.D.



#13 2,4-DB

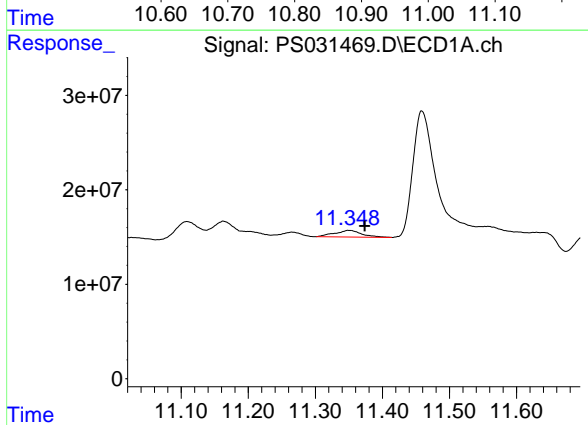
R.T.: 10.172 min
 Delta R.T.: 0.002 min
 Response: 69662978
 Conc: 36.25 ng/ml

Instrument :
 ECD_S
 ClientSampleId :
 WC-A2-16-C



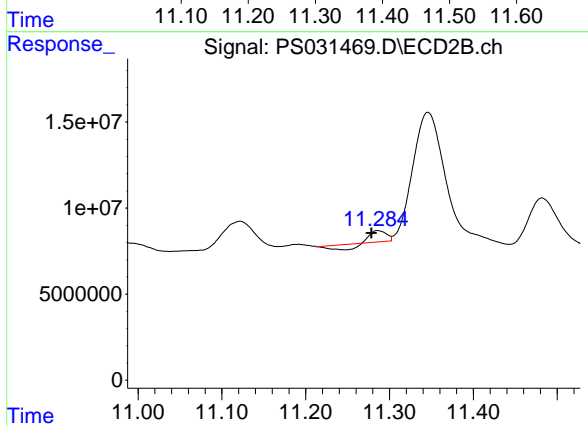
#13 2,4-DB

R.T.: 10.887 min
 Delta R.T.: -0.012 min
 Response: 77520013
 Conc: 80.34 ng/ml



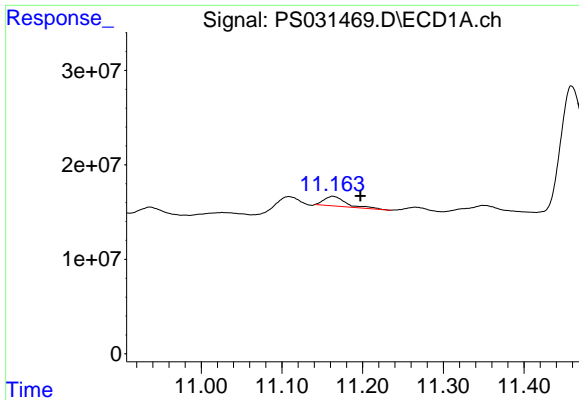
#14 DINOSEB

R.T.: 11.350 min
 Delta R.T.: -0.023 min
 Response: 19626945
 Conc: 1.55 ng/ml



#14 DINOSEB

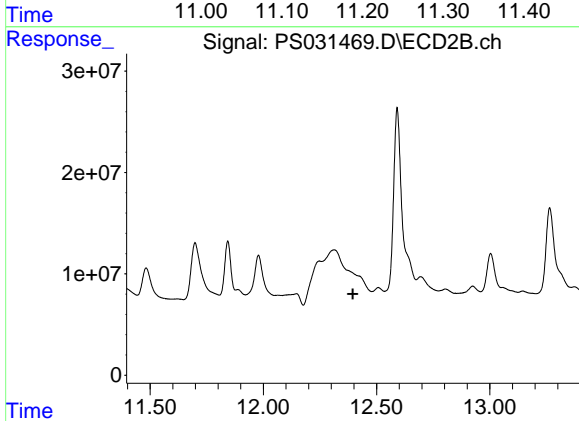
R.T.: 11.286 min
 Delta R.T.: 0.008 min
 Response: 3271803
 Conc: N.D.



#15 Picloram

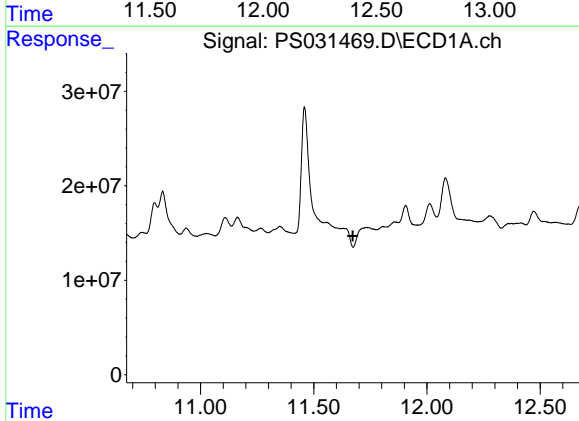
R.T.: 11.163 min
 Delta R.T.: -0.034 min
 Response: 19187875
 Conc: 1.47 ng/ml

Instrument :
 ECD_S
 ClientSampleId :
 WC-A2-16-C



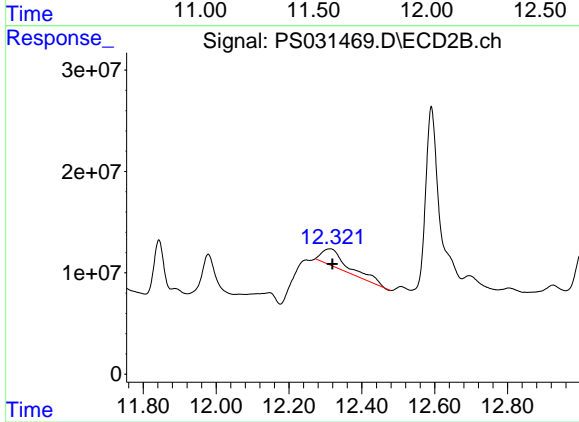
#15 Picloram

R.T.: 0.000 min
 Exp R.T. : 12.395 min
 Response: 0
 Conc: N.D.



#16 DCPA

R.T.: 0.000 min
 Exp R.T. : 11.673 min
 Response: 0
 Conc: N.D.



#16 DCPA

R.T.: 12.313 min
 Delta R.T.: -0.007 min
 Response: 84886740
 Conc: 4.31 ng/ml