

Data Path : Z:\pestpcbsrv\HPCHEM1\ECD\_S\Data\PS081619\  
 Data File : PS006162.D  
 Signal(s) : Signal #1: ECD1A.ch Signal #2: ECD2B.ch  
 Acq On : 16 Aug 2019 18:37  
 Operator : SM\AJ  
 Sample : K4356-02  
 Misc :  
 ALS Vial : 22 Sample Multiplier: 1

Instrument :  
 ECD\_S  
 ClientSampleId :

Integration File signal 1: autoint1.e  
 Integration File signal 2: autoint2.e  
 Quant Time: Aug 17 01:35:19 2019  
 Quant Method : Z:\pestpcbsrv\HPCHEM1\ECD\_S\Method\PS081419.M  
 Quant Title : 8080.M  
 QLast Update : Wed Aug 14 15:09:52 2019  
 Response via : Initial Calibration  
 Integrator: ChemStation

Volume Inj. : 2 µl  
 Signal #1 Phase : Rtx-CLPesticides Signal #2 Phase: Rtx-CLPesticides2  
 Signal #1 Info : 30M x 0.32mm x0.5 Signal #2 Info : 30M x 0.32mm x 0.25µm

Compound	RT#1	RT#2	Resp#1	Resp#2	ng/ml	ng/ml
-----						
System Monitoring Compounds						
4) S 2,4-DCAA	5.508	5.238	176.3E6	117.4E6	204.266	238.687
Target Compounds						
1) T Dalapon	2.047	1.762	78191843	119.0E6	71.760	189.579 #
7) T MCPA	0.000	5.559	0	111.0E6	N.D.	54.294
9) T 2,4-D	6.569	0.000	220.9E6	0	271.138	N.D. #
-----						

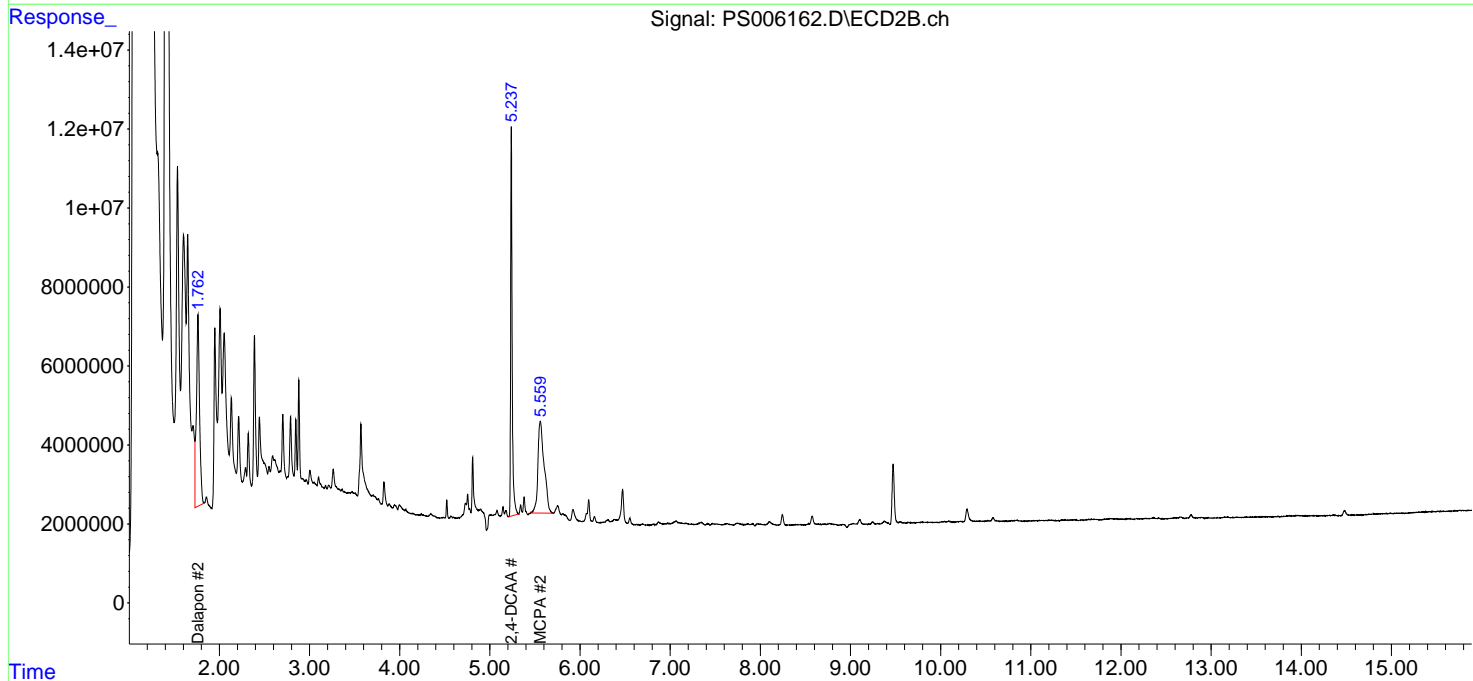
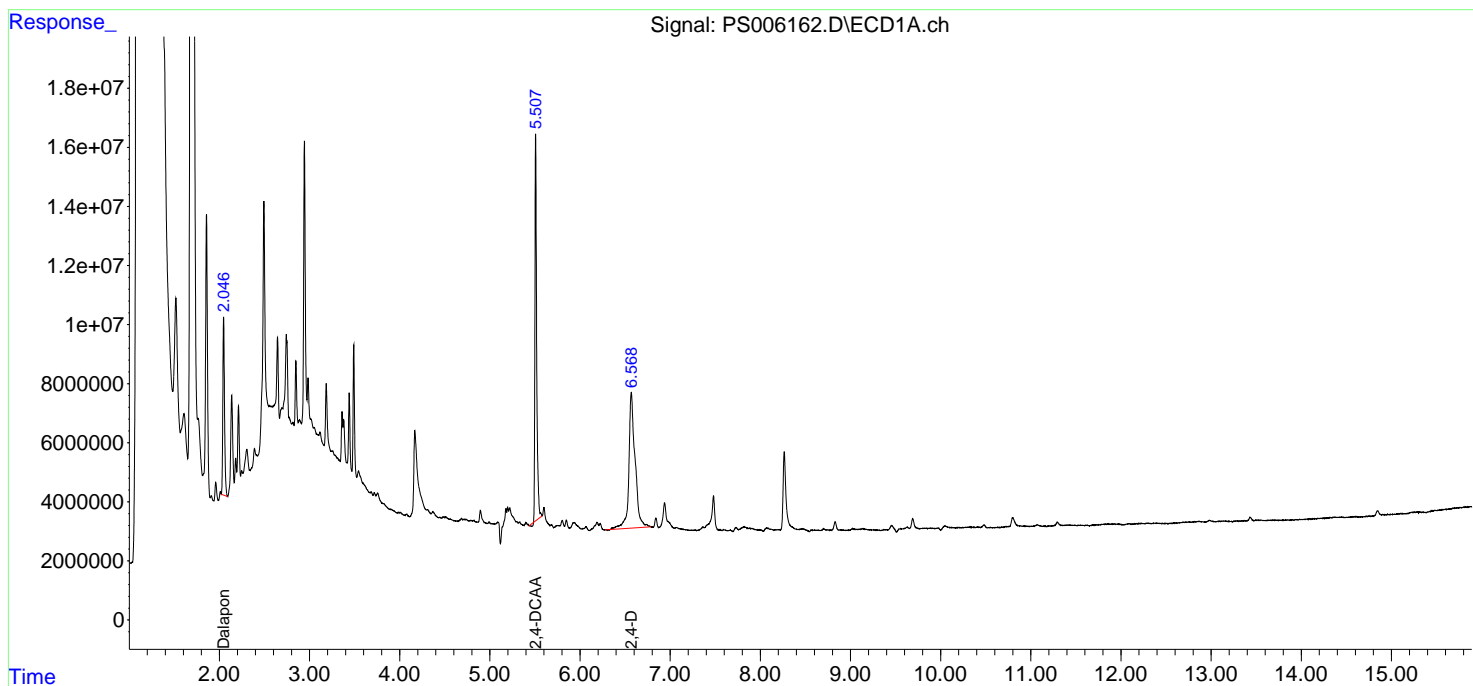
(f)=RT Delta > 1/2 Window (#)=Amounts differ by > 25% (m)=manual int.

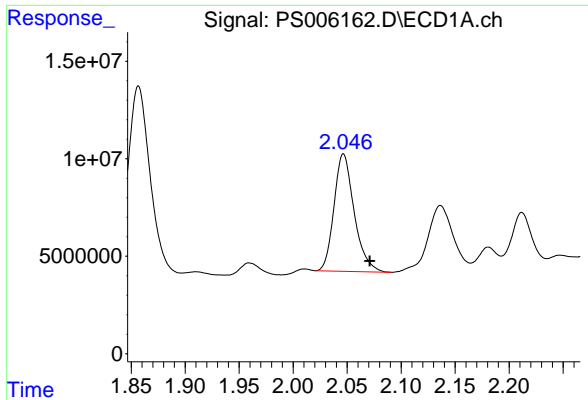
Data Path : Z:\pestpcbsrv\HPCHEM1\ECD\_S\Data\PS081619\  
 Data File : PS006162.D  
 Signal(s) : Signal #1: ECD1A.ch Signal #2: ECD2B.ch  
 Acq On : 16 Aug 2019 18:37  
 Operator : SM\AJ  
 Sample : K4356-02  
 Misc :  
 ALS Vial : 22 Sample Multiplier: 1

Instrument :  
 ECD\_S  
 ClientSampled :

Integration File signal 1: autoint1.e  
 Integration File signal 2: autoint2.e  
 Quant Time: Aug 17 01:35:19 2019  
 Quant Method : Z:\pestpcbsrv\HPCHEM1\ECD\_S\Method\PS081419.M  
 Quant Title : 8080.M  
 QLast Update : Wed Aug 14 15:09:52 2019  
 Response via : Initial Calibration  
 Integrator: ChemStation

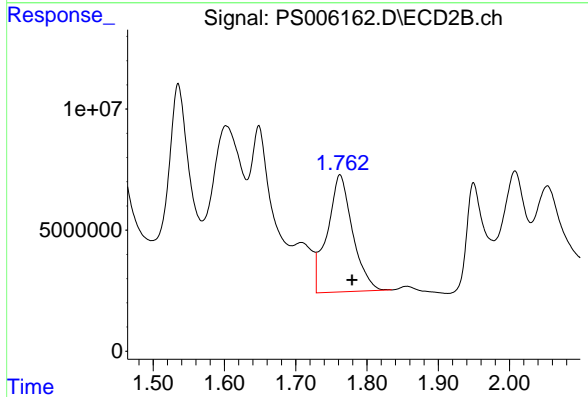
Volume Inj. : 2 µl  
 Signal #1 Phase : Rtx-CLPesticides Signal #2 Phase: Rtx-CLPesticides2  
 Signal #1 Info : 30M x 0.32mm x0.5 Signal #2 Info : 30M x 0.32mm x 0.25µm



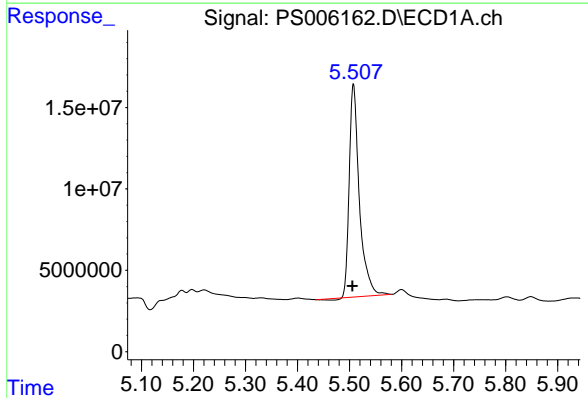


#1 Dalapon  
 R.T.: 2.047 min  
 Delta R.T.: -0.024 min  
 Response: 78191843  
 Conc: 71.76 ng/ml

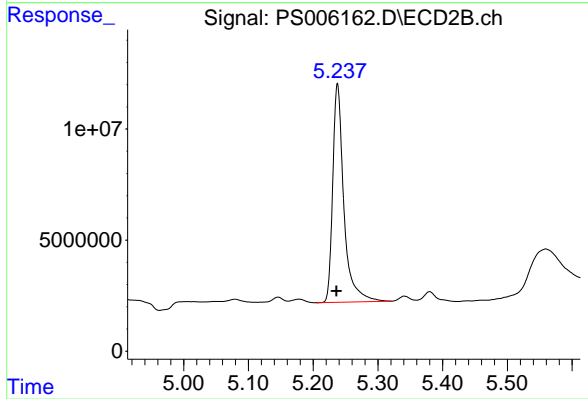
Instrument :  
 ECD\_S  
 ClientSampled :



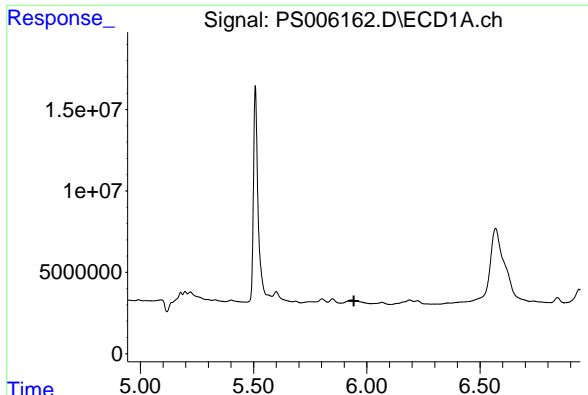
#1 Dalapon  
 R.T.: 1.762 min  
 Delta R.T.: -0.017 min  
 Response: 118959551  
 Conc: 189.58 ng/ml



#4 2,4-DCAA  
 R.T.: 5.508 min  
 Delta R.T.: 0.003 min  
 Response: 176322928  
 Conc: 204.27 ng/ml



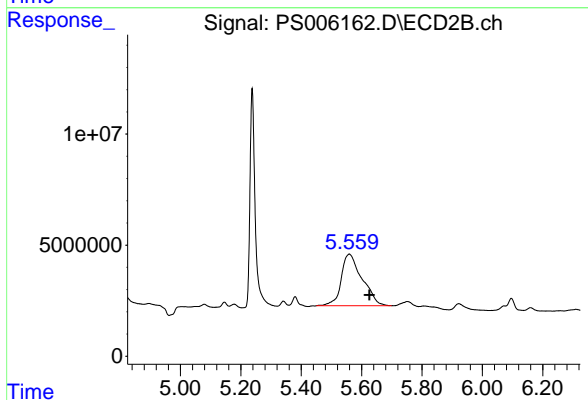
#4 2,4-DCAA  
 R.T.: 5.238 min  
 Delta R.T.: 0.002 min  
 Response: 117398756  
 Conc: 238.69 ng/ml



#7 MCPA

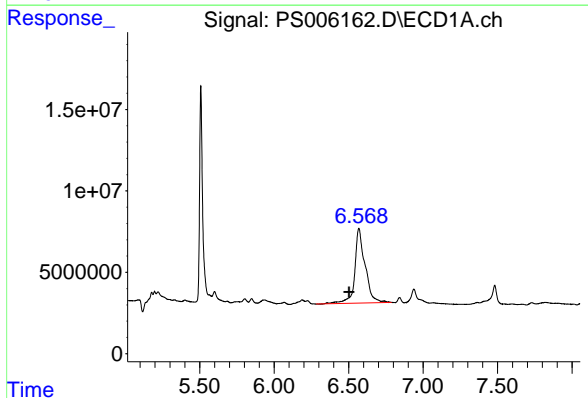
R.T.: 0.000 min  
 Exp R.T.: 5.943 min  
 Response: 0  
 Conc: N.D.

Instrument :  
 ECD\_S  
 ClientSampled :



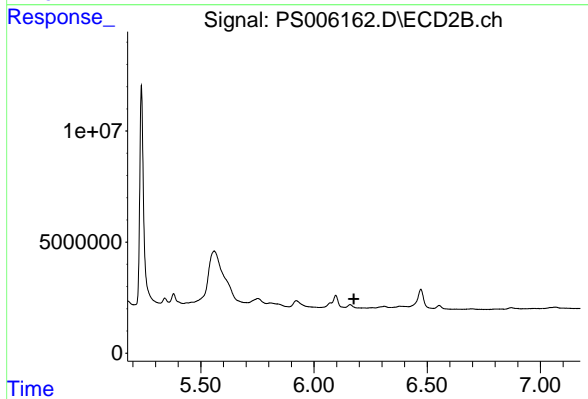
#7 MCPA

R.T.: 5.559 min  
 Delta R.T.: -0.067 min  
 Response: 110961479  
 Conc: 54.29 ug/ml



#9 2,4-D

R.T.: 6.569 min  
 Delta R.T.: 0.066 min  
 Response: 220918759  
 Conc: 271.14 ng/ml



#9 2,4-D

R.T.: 0.000 min  
 Exp R.T.: 6.176 min  
 Response: 0  
 Conc: N.D.