

Data Path : Z:\pestpcbsrv\HPCHEM1\ECD_S\Data\PS081619\
 Data File : PS006165.D
 Signal(s) : Signal #1: ECD1A.ch Signal #2: ECD2B.ch
 Acq On : 16 Aug 2019 19:43
 Operator : SM\AJ
 Sample : I.BLK
 Misc :
 ALS Vial : 2 Sample Multiplier: 1

Instrument :
 ECD_S
 ClientSampleId :

Integration File signal 1: autoint1.e
 Integration File signal 2: autoint2.e
 Quant Time: Aug 17 01:36:28 2019
 Quant Method : Z:\pestpcbsrv\HPCHEM1\ECD_S\Method\PS081419.M
 Quant Title : 8080.M
 QLast Update : Wed Aug 14 15:09:52 2019
 Response via : Initial Calibration
 Integrator: ChemStation

Volume Inj. : 2 µl
 Signal #1 Phase : Rtx-CLPesticides Signal #2 Phase: Rtx-CLPesticides2
 Signal #1 Info : 30M x 0.32mm x0.5 Signal #2 Info : 30M x 0.32mm x 0.25µm

Compound	RT#1	RT#2	Resp#1	Resp#2	ng/ml	ng/ml

System Monitoring Compounds						
4) S 2,4-DCAA	5.496	5.223	348.2E6	202.3E6	403.376	411.348
Target Compounds						
9) T 2,4-D	6.554	0.000	227.8E6	0	279.615	N.D. #

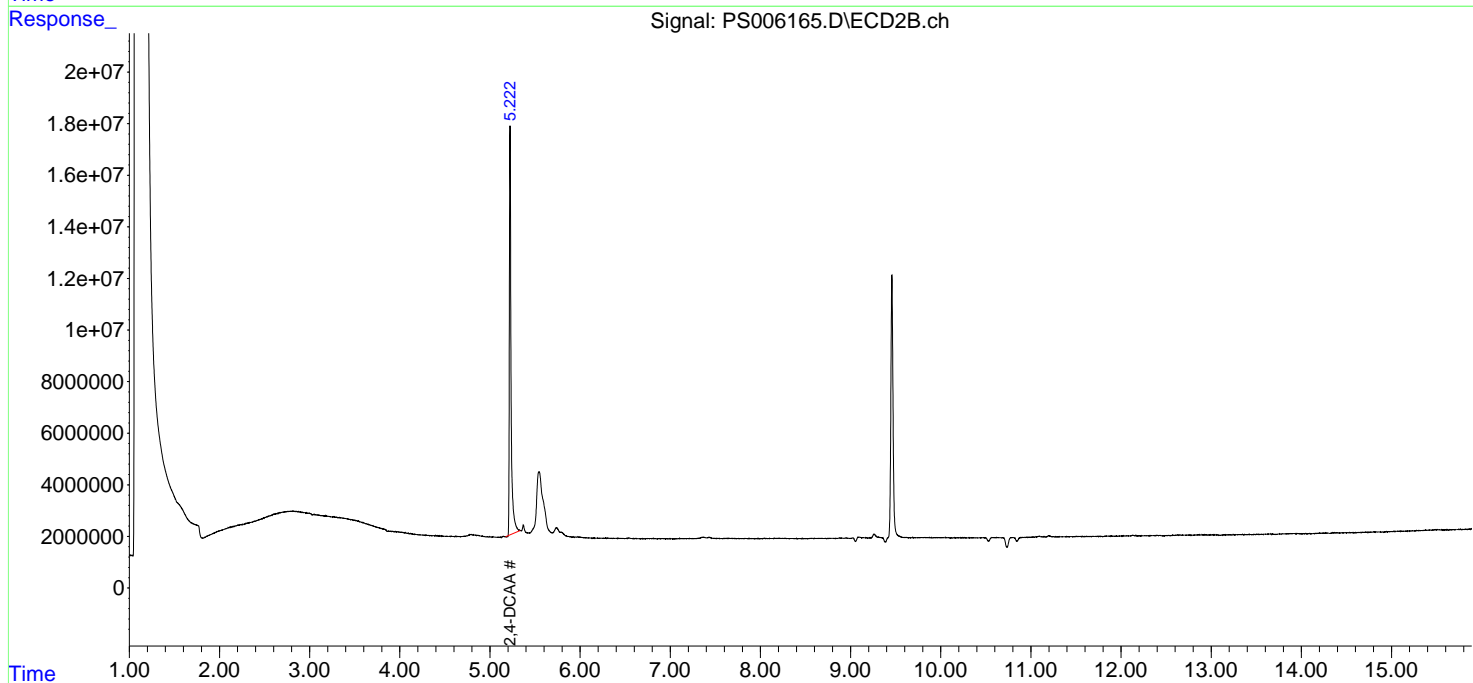
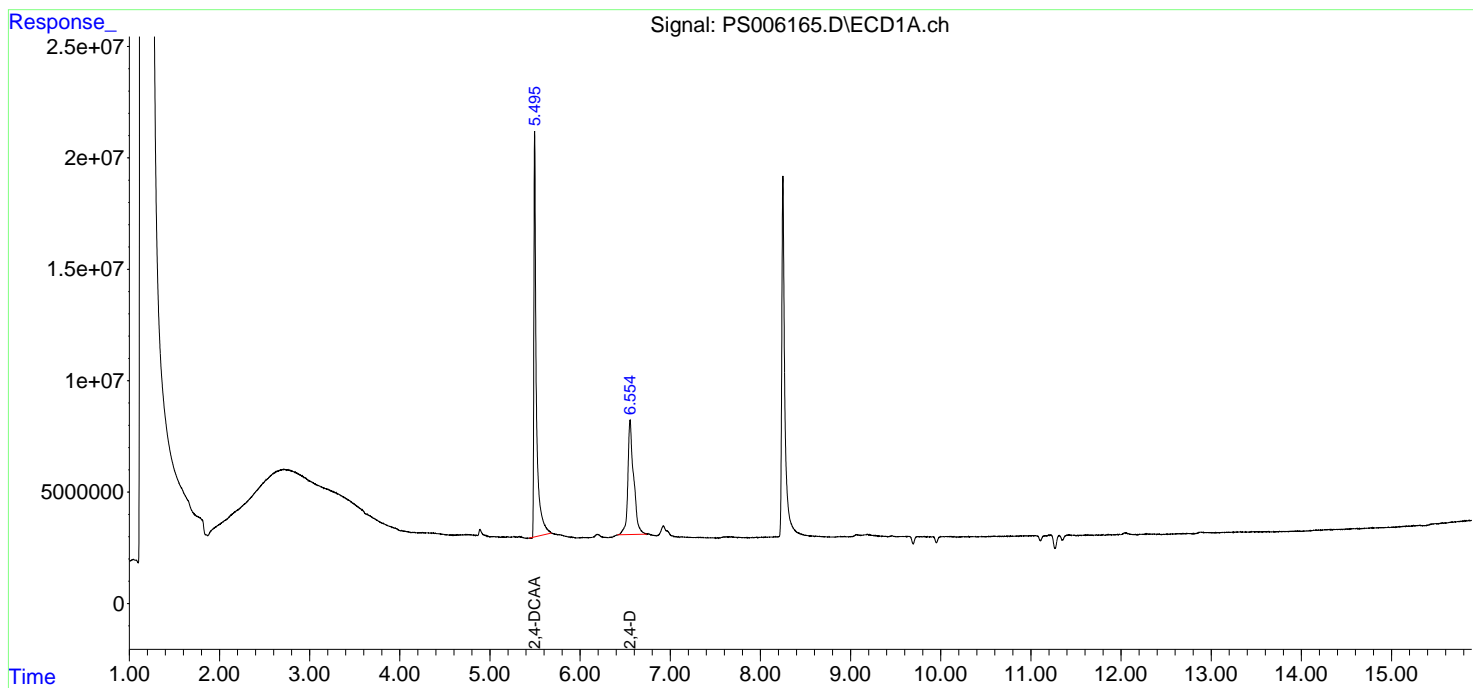
(f)=RT Delta > 1/2 Window (#)=Amounts differ by > 25% (m)=manual int.

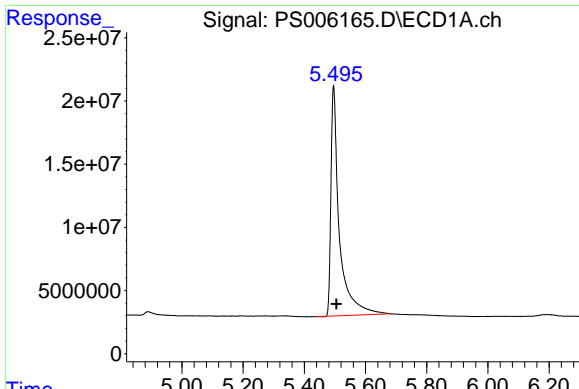
Data Path : Z:\pestpcbsrv\HPCHEM1\ECD_S\Data\PS081619\
Data File : PS006165.D
Signal(s) : Signal #1: ECD1A.ch Signal #2: ECD2B.ch
Acq On : 16 Aug 2019 19:43
Operator : SM\AJ
Sample : I.BLK
Misc :
ALS Vial : 2 Sample Multiplier: 1

Instrument :
ECD_S
ClientSampled :

Integration File signal 1: autoint1.e
Integration File signal 2: autoint2.e
Quant Time: Aug 17 01:36:28 2019
Quant Method : Z:\pestpcbsrv\HPCHEM1\ECD_S\Method\PS081419.M
Quant Title : 8080.M
QLast Update : Wed Aug 14 15:09:52 2019
Response via : Initial Calibration
Integrator: ChemStation

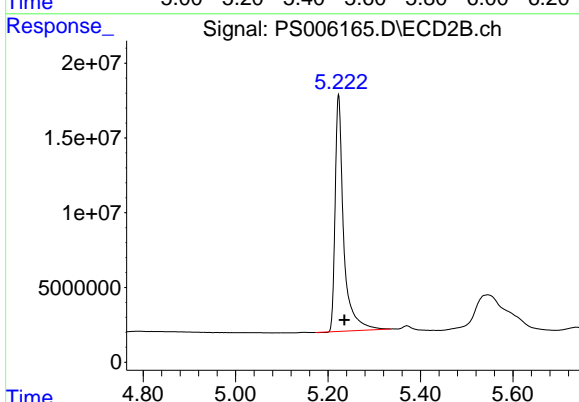
Volume Inj. : 2 µl
Signal #1 Phase : Rtx-CLPesticides Signal #2 Phase: Rtx-CLPesticides2
Signal #1 Info : 30M x 0.32mm x 0.5 Signal #2 Info : 30M x 0.32mm x 0.25µm



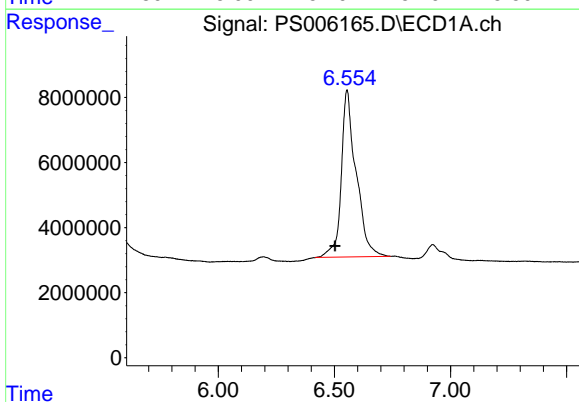


#4 2,4-DCAA
 R.T.: 5.496 min
 Delta R.T.: -0.009 min
 Response: 348194594
 Conc: 403.38 ng/ml

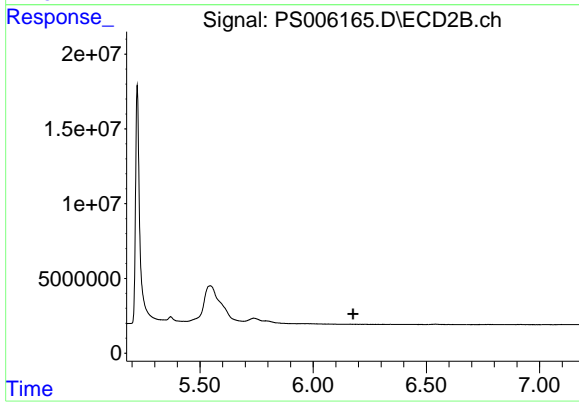
Instrument :
 ECD_S
 ClientSampled :



#4 2,4-DCAA
 R.T.: 5.223 min
 Delta R.T.: -0.013 min
 Response: 202322450
 Conc: 411.35 ng/ml



#9 2,4-D
 R.T.: 6.554 min
 Delta R.T.: 0.051 min
 Response: 227825543
 Conc: 279.61 ng/ml



#9 2,4-D
 R.T.: 0.000 min
 Exp R.T.: 6.176 min
 Response: 0
 Conc: N.D.