

Data Path : Z:\pestpcbsrv\HPCHEM1\ECD\_S\Data\PS081619\  
 Data File : PS006166.D  
 Signal(s) : Signal #1: ECD1A.ch Signal #2: ECD2B.ch  
 Acq On : 16 Aug 2019 20:06  
 Operator : SM\AJ  
 Sample : HSTDCCC750  
 Misc :  
 ALS Vial : 3 Sample Multiplier: 1

Instrument :  
 ECD\_S  
 ClientSampleId :

Integration File signal 1: autoint1.e  
 Integration File signal 2: autoint2.e  
 Quant Time: Aug 17 01:36:50 2019  
 Quant Method : Z:\pestpcbsrv\HPCHEM1\ECD\_S\Method\PS081419.M  
 Quant Title : 8080.M  
 QLast Update : Wed Aug 14 15:09:52 2019  
 Response via : Initial Calibration  
 Integrator: ChemStation

Volume Inj. : 2 µl  
 Signal #1 Phase : Rtx-CLPesticides Signal #2 Phase: Rtx-CLPesticides2  
 Signal #1 Info : 30M x 0.32mm x0.5 Signal #2 Info : 30M x 0.32mm x 0.25µm

	Compound	RT#1	RT#2	Resp#1	Resp#2	ng/ml	ng/ml
-----							
System Monitoring Compounds							
4) S	2,4-DCAA	5.488	5.218	684.4E6	375.7E6	792.822	763.766
Target Compounds							
1) T	Dalapon	2.052	1.760	698.8E6	431.5E6	641.363	687.590
2) T	3,5-DICHL...	4.854	4.520	778.2E6	439.3E6	721.791	725.228
3) T	4-Nitroph...	5.342	4.903	271.3E6	177.1E6	722.644	714.867
5) T	DICAMBA	5.639	5.346	2338.2E6	1329.7E6	728.028	720.892
6) T	MCP P	5.789	5.429	152.2E6	93918571	67.632	75.918
7) T	MCPA	5.922	5.607	236.4E6	152.5E6	74.866	74.634
8) T	DICHLORPROP	6.269	5.887	545.8E6	321.6E6	719.739	723.386
9) T	2,4-D	6.486	6.158	566.6E6	392.4E6	695.338	713.876
10) T	Pentachlo...	6.744	6.524	8632.4E6	4960.9E6	730.263	733.864
11) T	2,4,5-TP ...	7.280	6.887	3318.2E6	1911.9E6	727.383	734.736
12) T	2,4,5-T	7.554	7.282	3628.5E6	1729.3E6	733.833	695.597
13) T	2,4-DB	8.085	7.734	437.3E6	238.2E6	702.229	715.641
14) T	DINOSEB	9.171	8.043	2710.5E6	1394.0E6	740.408	725.740
15) T	Picloram	9.009	8.983	4001.9E6	2377.0E6	537.842	526.952
16) T	DCPA	9.443	8.939	4314.6E6	2612.5E6	744.459	749.190
-----							

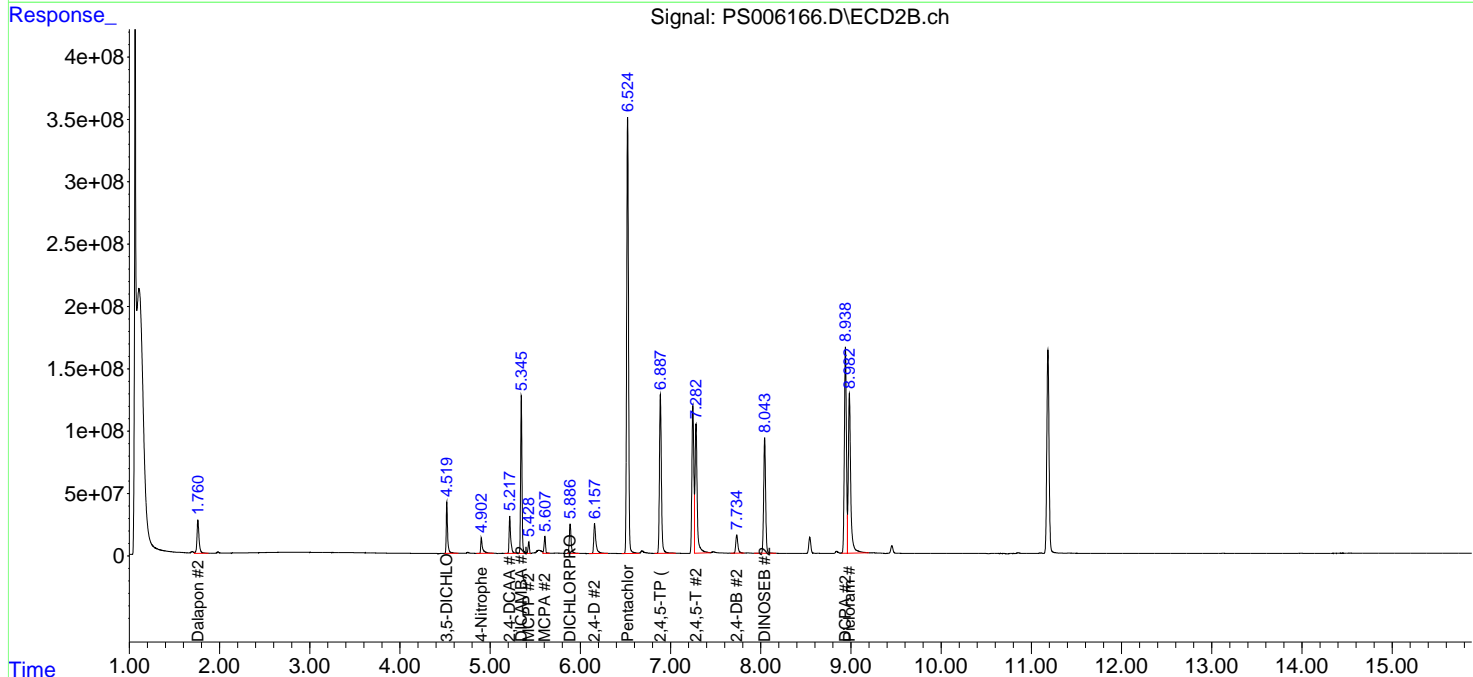
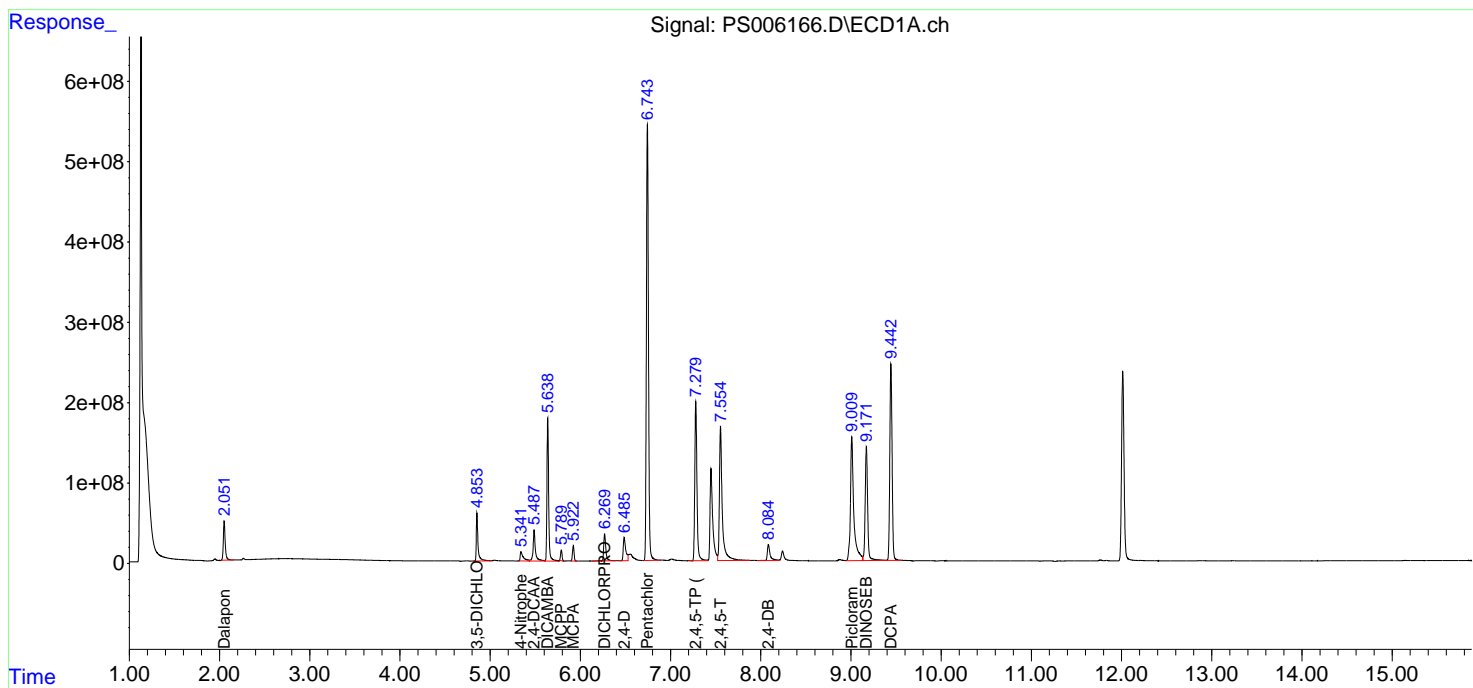
(f)=RT Delta > 1/2 Window (#)=Amounts differ by > 25% (m)=manual int.

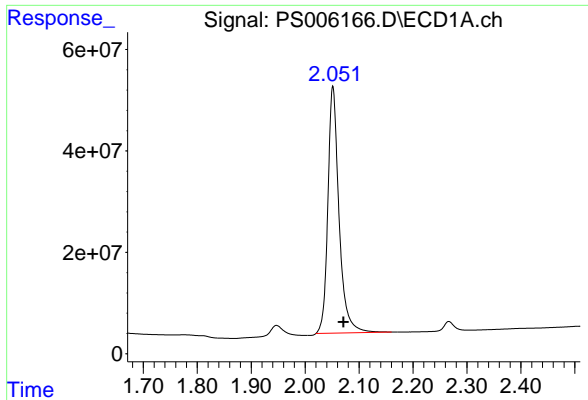
Data Path : Z:\pestpcbsrv\HPCHEM1\ECD\_S\Data\PS081619\  
 Data File : PS006166.D  
 Signal(s) : Signal #1: ECD1A.ch Signal #2: ECD2B.ch  
 Acq On : 16 Aug 2019 20:06  
 Operator : SM\AJ  
 Sample : HSTDCCC750  
 Misc :  
 ALS Vial : 3 Sample Multiplier: 1

Instrument :  
 ECD\_S  
 ClientSampled :

Integration File signal 1: autoint1.e  
 Integration File signal 2: autoint2.e  
 Quant Time: Aug 17 01:36:50 2019  
 Quant Method : Z:\pestpcbsrv\HPCHEM1\ECD\_S\Method\PS081419.M  
 Quant Title : 8080.M  
 QLast Update : Wed Aug 14 15:09:52 2019  
 Response via : Initial Calibration  
 Integrator: ChemStation

Volume Inj. : 2 µl  
 Signal #1 Phase : Rtx-CLPesticides Signal #2 Phase: Rtx-CLPesticides2  
 Signal #1 Info : 30M x 0.32mm x 0.5 Signal #2 Info : 30M x 0.32mm x 0.25µm

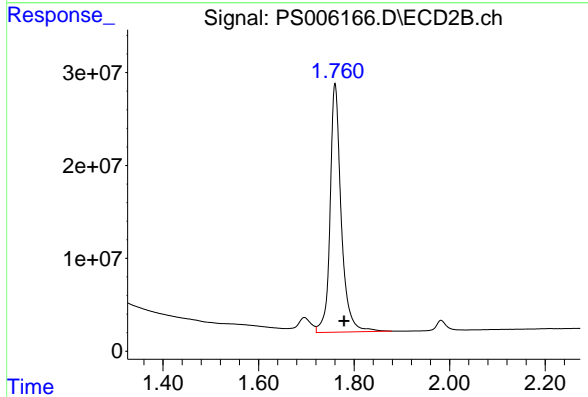




#1 Dalapon

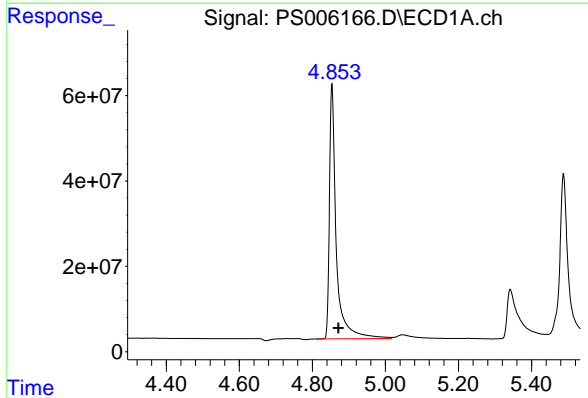
R.T.: 2.052 min  
Delta R.T.: -0.019 min  
Response: 698845879  
Conc: 641.36 ng/ml

Instrument :  
ECD\_S  
ClientSampled :



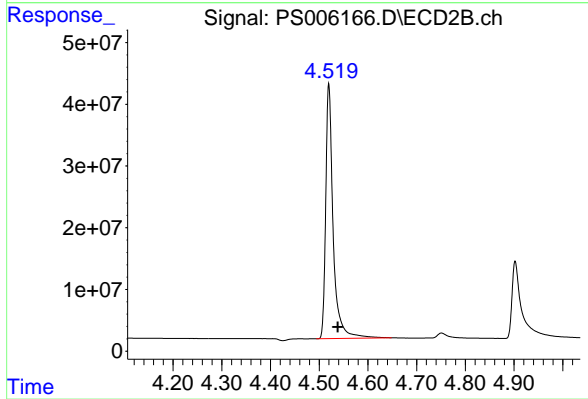
#1 Dalapon

R.T.: 1.760 min  
Delta R.T.: -0.019 min  
Response: 431457923  
Conc: 687.59 ng/ml



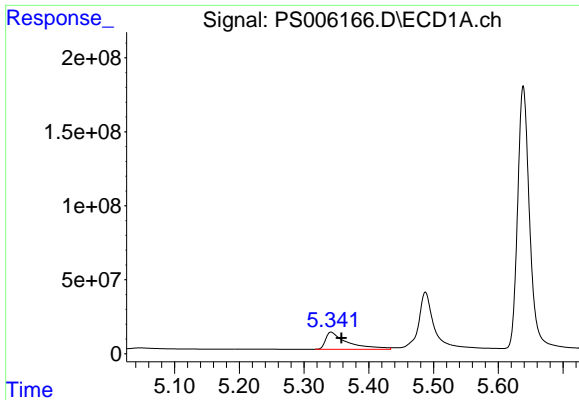
#2 3,5-DICHLOROBENZOIC ACID

R.T.: 4.854 min  
Delta R.T.: -0.018 min  
Response: 778186546  
Conc: 721.79 ng/ml



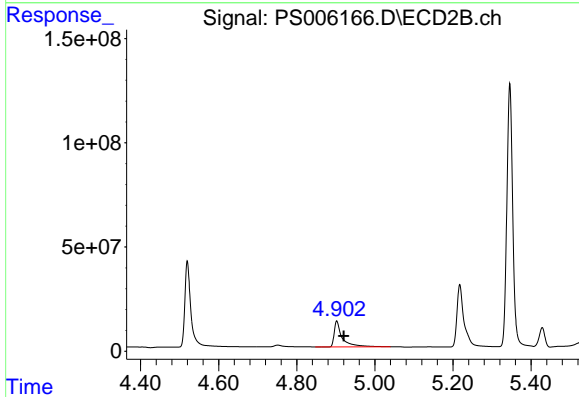
#2 3,5-DICHLOROBENZOIC ACID

R.T.: 4.520 min  
Delta R.T.: -0.018 min  
Response: 439275521  
Conc: 725.23 ng/ml

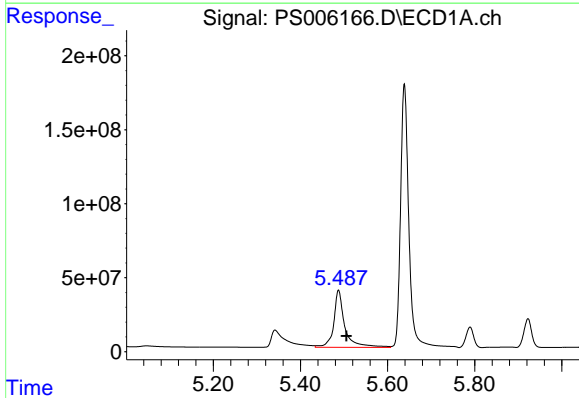


#3 4-Nitrophenol  
 R.T.: 5.342 min  
 Delta R.T.: -0.016 min  
 Response: 271292120  
 Conc: 722.64 ng/ml

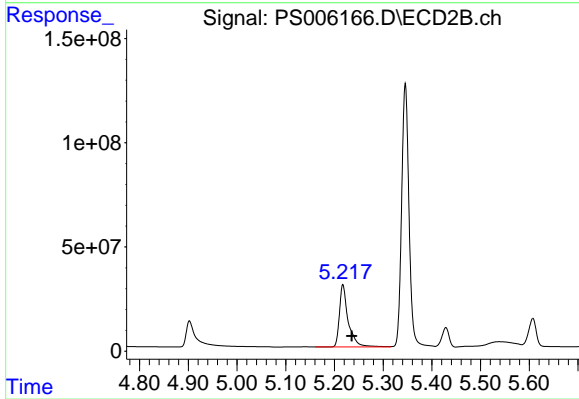
Instrument :  
 ECD\_S  
 ClientSampled :



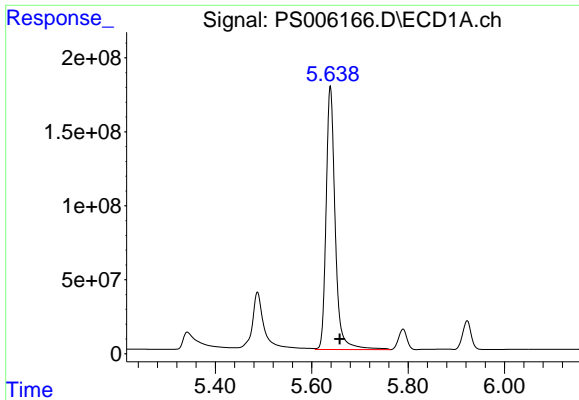
#3 4-Nitrophenol  
 R.T.: 4.903 min  
 Delta R.T.: -0.017 min  
 Response: 177090415  
 Conc: 714.87 ng/ml



#4 2,4-DCAA  
 R.T.: 5.488 min  
 Delta R.T.: -0.018 min  
 Response: 684364494  
 Conc: 792.82 ng/ml

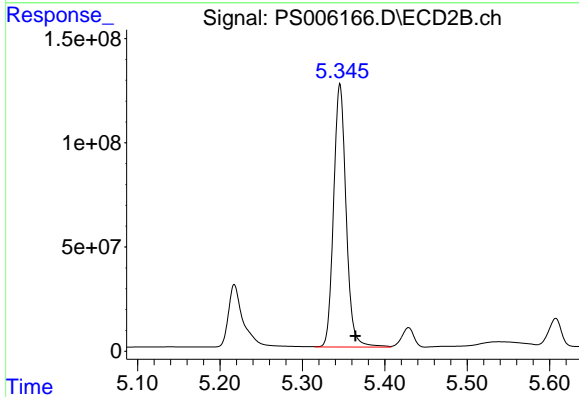


#4 2,4-DCAA  
 R.T.: 5.218 min  
 Delta R.T.: -0.018 min  
 Response: 375659745  
 Conc: 763.77 ng/ml

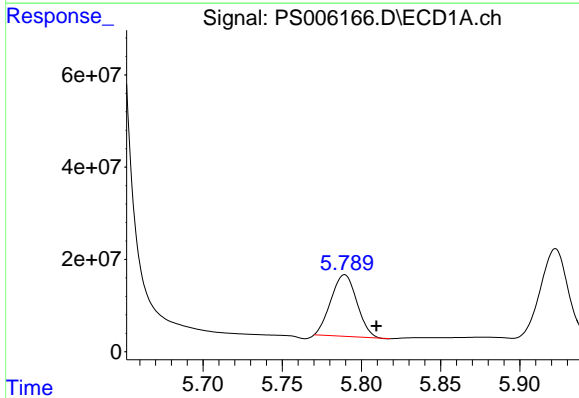


#5 DICAMBA  
R.T.: 5.639 min  
Delta R.T.: -0.019 min  
Response: 2338178992  
Conc: 728.03 ng/ml

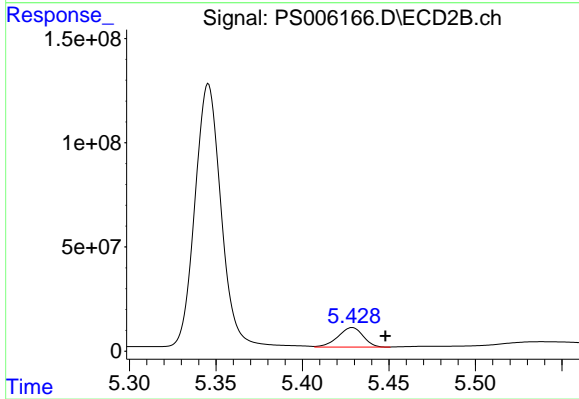
Instrument :  
ECD\_S  
ClientSampleId :



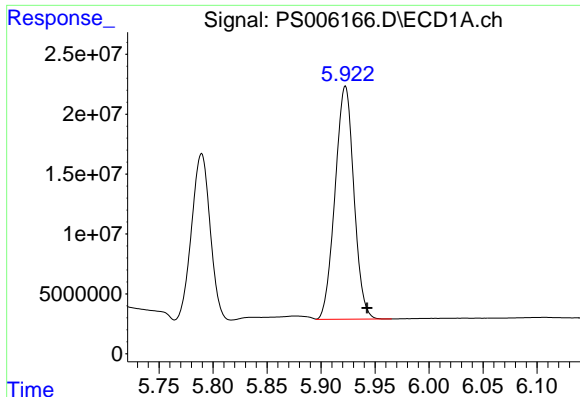
#5 DICAMBA  
R.T.: 5.346 min  
Delta R.T.: -0.019 min  
Response: 1329688653  
Conc: 720.89 ng/ml



#6 MCPP  
R.T.: 5.789 min  
Delta R.T.: -0.020 min  
Response: 152200853  
Conc: 67.63 ug/ml



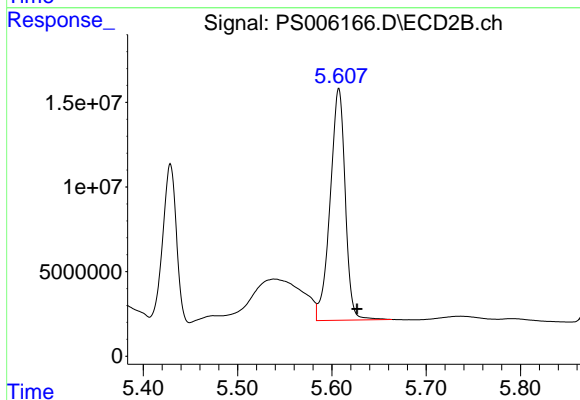
#6 MCPP  
R.T.: 5.429 min  
Delta R.T.: -0.019 min  
Response: 93918571  
Conc: 75.92 ug/ml



#7 MCPA

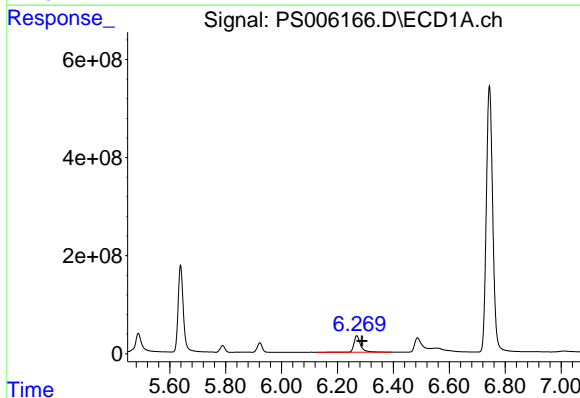
R.T.: 5.922 min  
Delta R.T.: -0.020 min  
Response: 236357429  
Conc: 74.87 ug/ml

Instrument :  
ECD\_S  
ClientSampled :



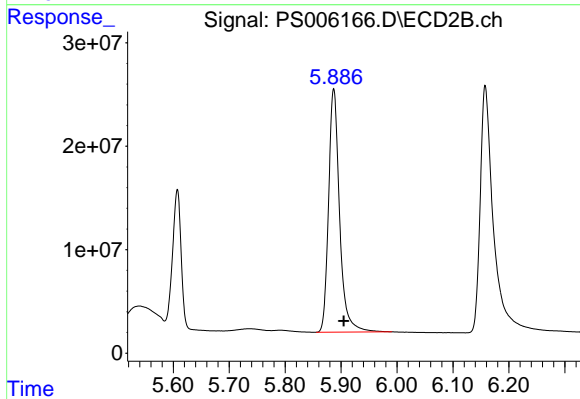
#7 MCPA

R.T.: 5.607 min  
Delta R.T.: -0.019 min  
Response: 152530777  
Conc: 74.63 ug/ml



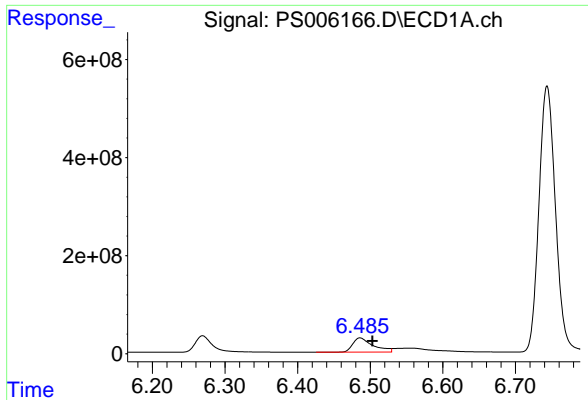
#8 DICHLORPROP

R.T.: 6.269 min  
Delta R.T.: -0.019 min  
Response: 545831851  
Conc: 719.74 ng/ml



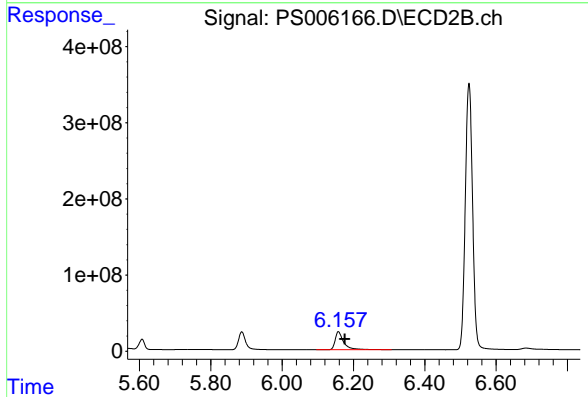
#8 DICHLORPROP

R.T.: 5.887 min  
Delta R.T.: -0.018 min  
Response: 321620994  
Conc: 723.39 ng/ml

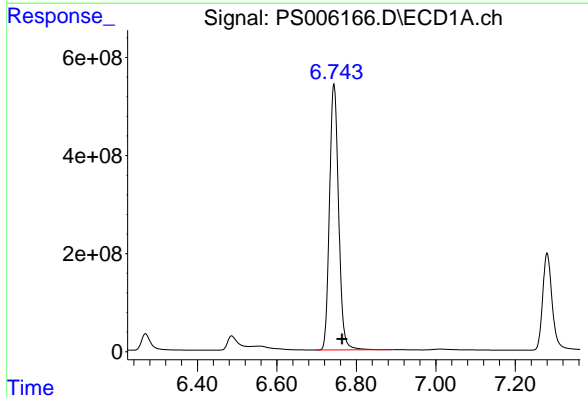


#9 2,4-D  
 R.T.: 6.486 min  
 Delta R.T.: -0.017 min  
 Response: 566550456  
 Conc: 695.34 ng/ml

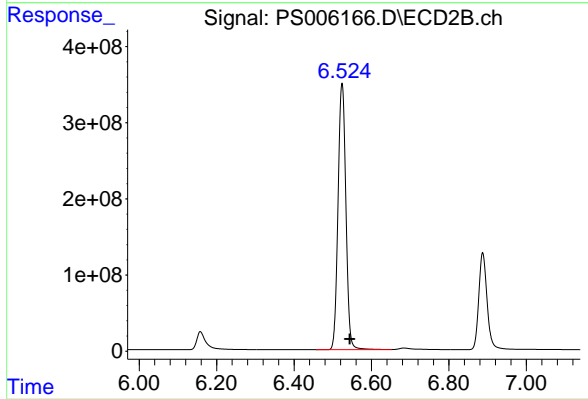
Instrument :  
 ECD\_S  
 ClientSampleId :



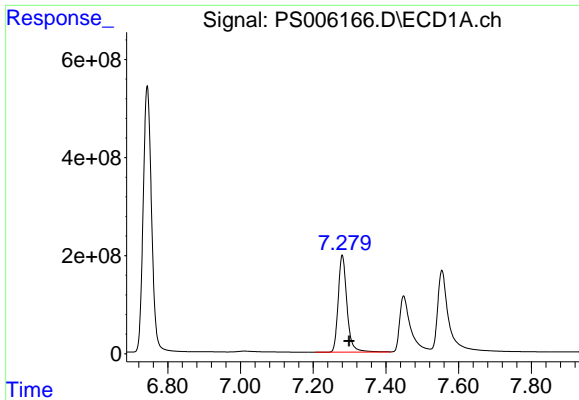
#9 2,4-D  
 R.T.: 6.158 min  
 Delta R.T.: -0.018 min  
 Response: 392427594  
 Conc: 713.88 ng/ml



#10 Pentachlorophenol  
 R.T.: 6.744 min  
 Delta R.T.: -0.021 min  
 Response: 8632352296  
 Conc: 730.26 ng/ml



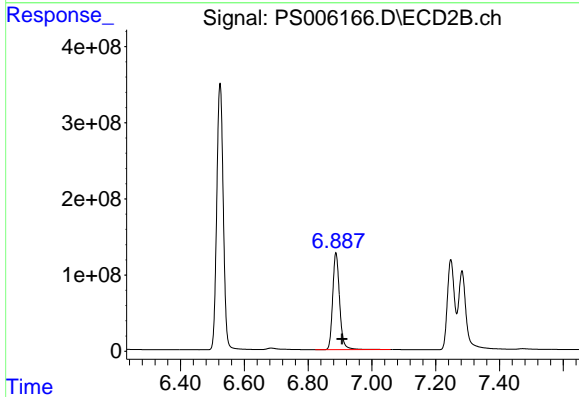
#10 Pentachlorophenol  
 R.T.: 6.524 min  
 Delta R.T.: -0.020 min  
 Response: 4960866036  
 Conc: 733.86 ng/ml



#11 2,4,5-TP (SILVEX)

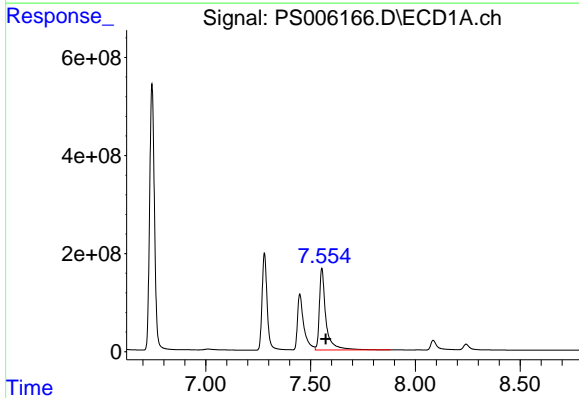
R.T.: 7.280 min  
Delta R.T.: -0.019 min  
Response: 3318170260  
Conc: 727.38 ng/ml

Instrument :  
ECD\_S  
ClientSampled :



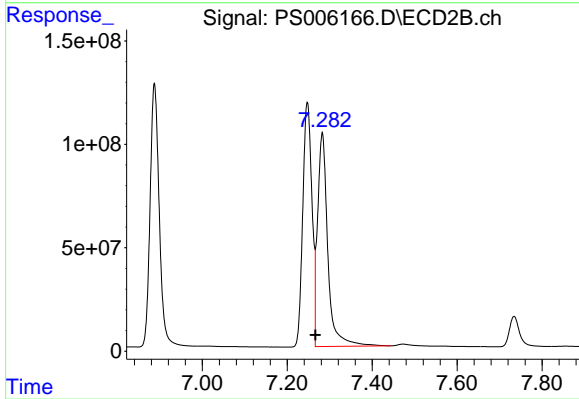
#11 2,4,5-TP (SILVEX)

R.T.: 6.887 min  
Delta R.T.: -0.019 min  
Response: 1911853657  
Conc: 734.74 ng/ml



#12 2,4,5-T

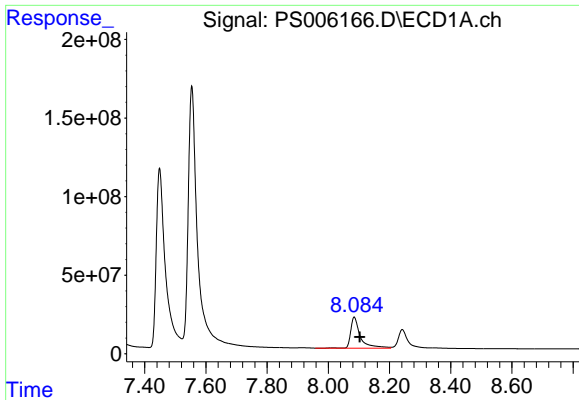
R.T.: 7.554 min  
Delta R.T.: -0.019 min  
Response: 3628498866  
Conc: 733.83 ng/ml



#12 2,4,5-T

R.T.: 7.282 min  
Delta R.T.: 0.016 min  
Response: 1729291303  
Conc: 695.60 ng/ml

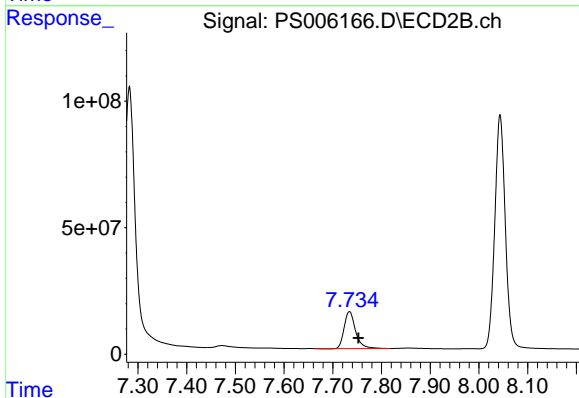




#13 2,4-DB

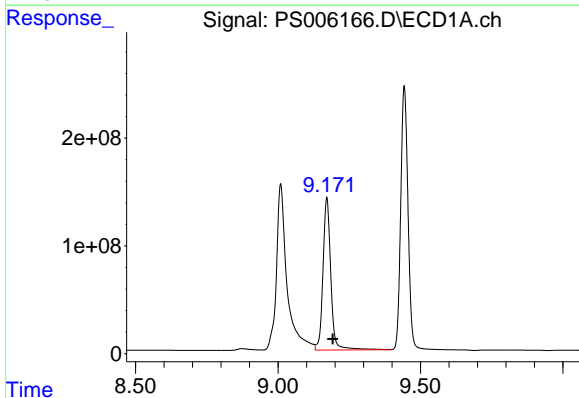
R.T.: 8.085 min  
 Delta R.T.: -0.018 min  
 Response: 437338161  
 Conc: 702.23 ng/ml

Instrument :  
 ECD\_S  
 ClientSampleId :



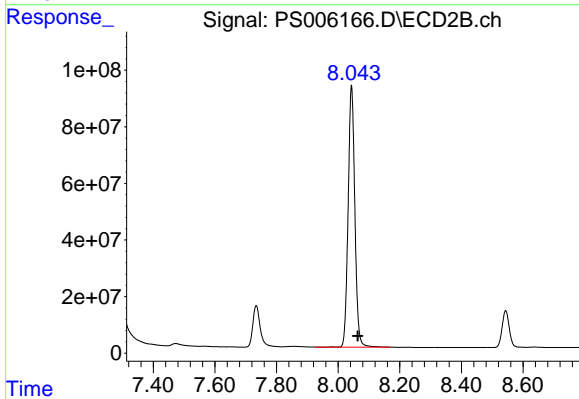
#13 2,4-DB

R.T.: 7.734 min  
 Delta R.T.: -0.018 min  
 Response: 238167302  
 Conc: 715.64 ng/ml



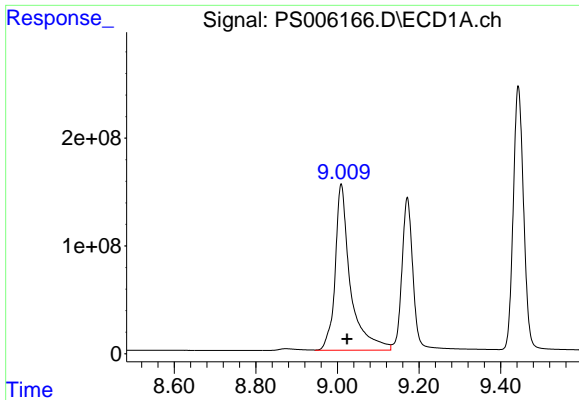
#14 DINOSEB

R.T.: 9.171 min  
 Delta R.T.: -0.021 min  
 Response: 2710480598  
 Conc: 740.41 ng/ml



#14 DINOSEB

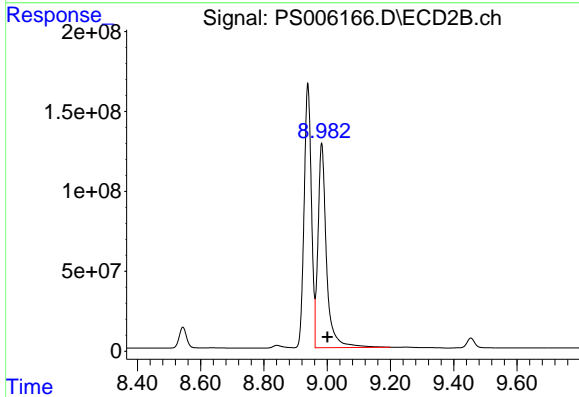
R.T.: 8.043 min  
 Delta R.T.: -0.020 min  
 Response: 1394020747  
 Conc: 725.74 ng/ml



#15 Picloram

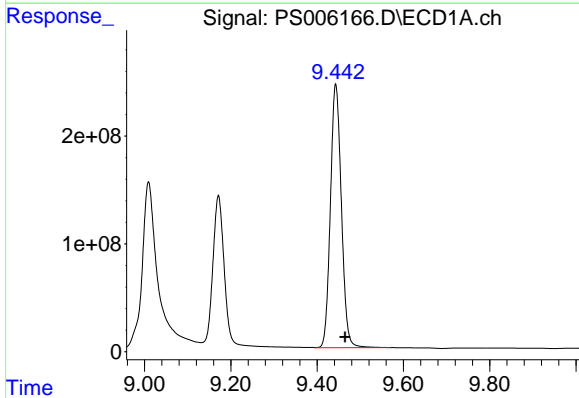
R.T.: 9.009 min  
 Delta R.T.: -0.014 min  
 Response: 4001874887  
 Conc: 537.84 ng/ml

Instrument :  
 ECD\_S  
 ClientSampled :



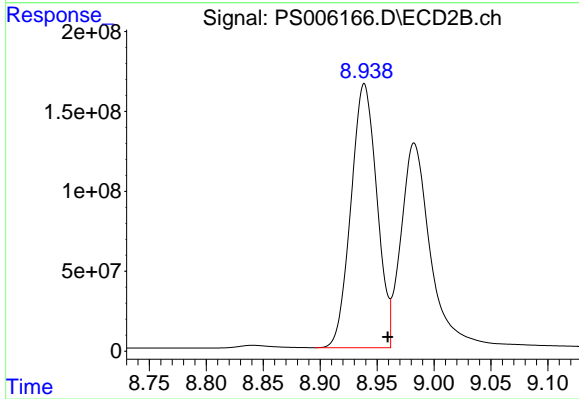
#15 Picloram

R.T.: 8.983 min  
 Delta R.T.: -0.017 min  
 Response: 2377003565  
 Conc: 526.95 ng/ml



#16 DCPA

R.T.: 9.443 min  
 Delta R.T.: -0.022 min  
 Response: 4314561252  
 Conc: 744.46 ng/ml



#16 DCPA

R.T.: 8.939 min  
 Delta R.T.: -0.021 min  
 Response: 2612538947  
 Conc: 749.19 ng/ml