

Data Path : Z:\pestpcbsrv\HPCHEM1\ECD_S\Data\PS081619\
 Data File : PS006176.D
 Signal(s) : Signal #1: ECD1A.ch Signal #2: ECD2B.ch
 Acq On : 16 Aug 2019 23:47
 Operator : SM\AJ
 Sample : PB122322BS
 Misc :
 ALS Vial : 30 Sample Multiplier: 1

Instrument :
 ECD_S
 ClientSampleId :

Integration File signal 1: autoint1.e
 Integration File signal 2: autoint2.e
 Quant Time: Aug 17 01:40:38 2019
 Quant Method : Z:\pestpcbsrv\HPCHEM1\ECD_S\Method\PS081419.M
 Quant Title : 8080.M
 QLast Update : Wed Aug 14 15:09:52 2019
 Response via : Initial Calibration
 Integrator: ChemStation

Volume Inj. : 2 µl
 Signal #1 Phase : Rtx-CLPesticides Signal #2 Phase: Rtx-CLPesticides2
 Signal #1 Info : 30M x 0.32mm x0.5 Signal #2 Info : 30M x 0.32mm x 0.25µm

	Compound	RT#1	RT#2	Resp#1	Resp#2	ng/ml	ng/ml

System Monitoring Compounds							
4) S	2,4-DCAA	5.489	5.218	391.3E6	223.4E6	453.292	454.112
Target Compounds							
1) T	Dalapon	2.048	1.758	359.8E6	346.9E6	330.167	552.832 #
2) T	3,5-DICHL...	4.854	4.521	469.6E6	322.6E6	435.567	532.526
3) T	4-Nitroph...	5.347	4.905	151.3E6	88518944	403.093	357.327
5) T	DICAMBA	5.640	5.346	1375.8E6	785.1E6	428.378	425.643
6) T	MCP P	5.788	5.428	86665726	52915406	38.511	42.774
7) T	MCPA	5.921	5.605	136.3E6	101.6E6	43.164	49.689
8) T	DICHLORPROP	6.270	5.887	349.8E6	205.2E6	461.196	461.552
9) T	2,4-D	6.489	6.159	380.0E6	272.7E6	466.377	496.146
10) T	Pentachlo...	6.744	6.524	5541.5E6	3165.8E6	468.789	468.324
11) T	2,4,5-TP ...	7.281	6.888	2049.2E6	1166.4E6	449.209	448.250
12) T	2,4,5-T	7.556	7.249	2317.3E6	1103.0E6	468.650	443.659
13) T	2,4-DB	8.088	7.736	361.8E6	143.6E6	581.016	431.387 #
14) T	DINOSEB	9.172	8.043	1676.8E6	846.4E6	458.056	440.661
15) T	Picloram	9.011	8.983	2939.0E6	1810.6E6	394.995	401.379
16) T	DCPA	9.444	8.938	2672.5E6	1482.6E6	461.127	425.171

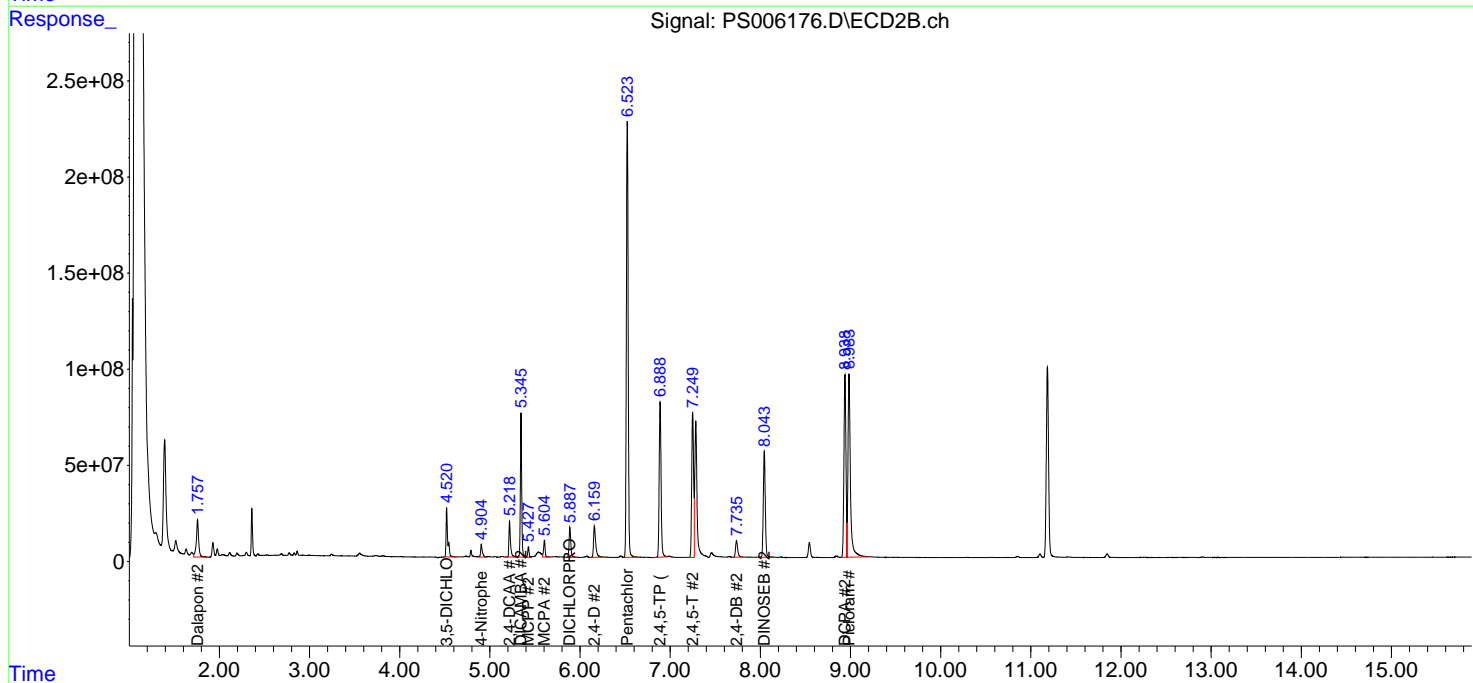
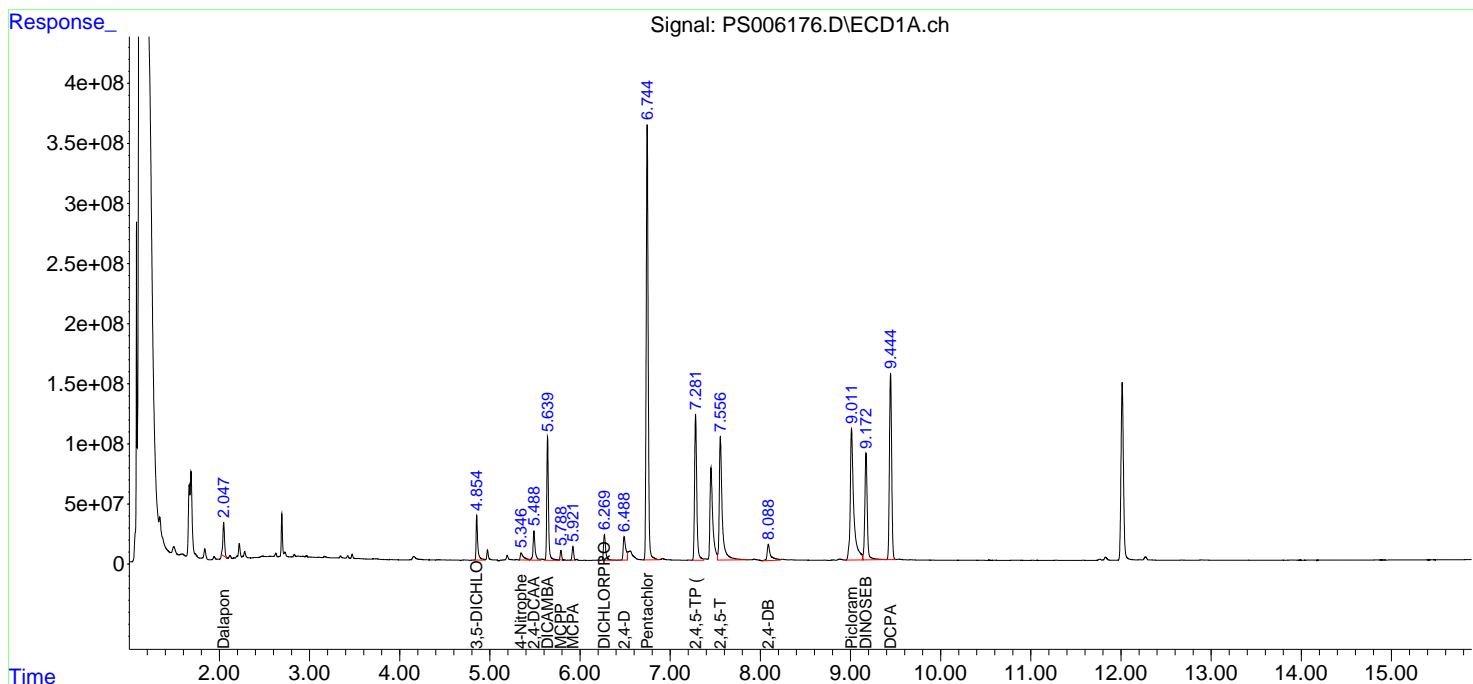
(f)=RT Delta > 1/2 Window (#)=Amounts differ by > 25% (m)=manual int.

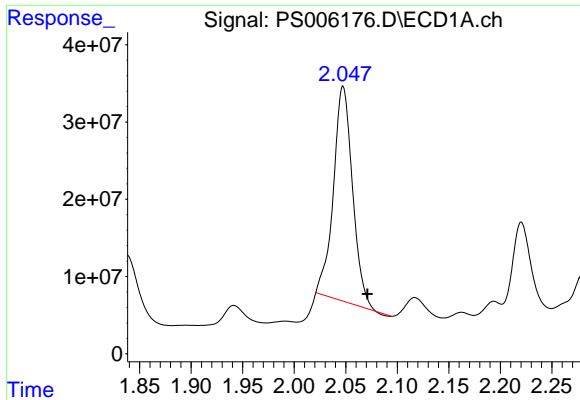
Data Path : Z:\pestpcbsrv\HPCHEM1\ECD_S\Data\PS081619\
 Data File : PS006176.D
 Signal(s) : Signal #1: ECD1A.ch Signal #2: ECD2B.ch
 Acq On : 16 Aug 2019 23:47
 Operator : SM\AJ
 Sample : PB122322BS
 Misc :
 ALS Vial : 30 Sample Multiplier: 1

Instrument :
 ECD_S
 ClientSampled :

Integration File signal 1: autoint1.e
 Integration File signal 2: autoint2.e
 Quant Time: Aug 17 01:40:38 2019
 Quant Method : Z:\pestpcbsrv\HPCHEM1\ECD_S\Method\PS081419.M
 Quant Title : 8080.M
 QLast Update : Wed Aug 14 15:09:52 2019
 Response via : Initial Calibration
 Integrator: ChemStation

Volume Inj. : 2 µl
 Signal #1 Phase : Rtx-CLPesticides Signal #2 Phase: Rtx-CLPesticides2
 Signal #1 Info : 30M x 0.32mm x 0.5 Signal #2 Info : 30M x 0.32mm x 0.25µm

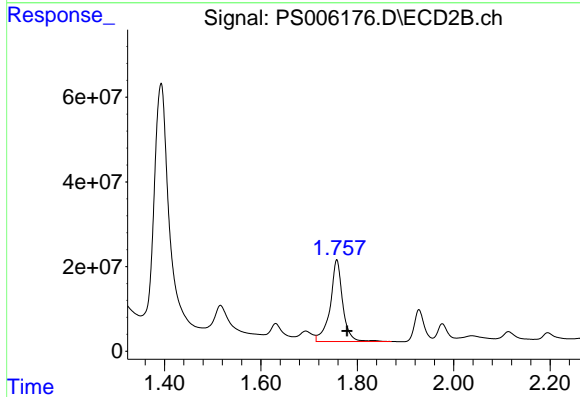




#1 Dalapon

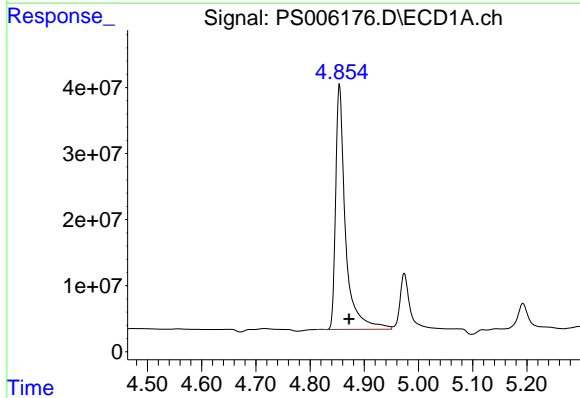
R.T.: 2.048 min
 Delta R.T.: -0.023 min
 Response: 359757991
 Conc: 330.17 ng/ml

Instrument :
 ECD_S
 ClientSampleId :



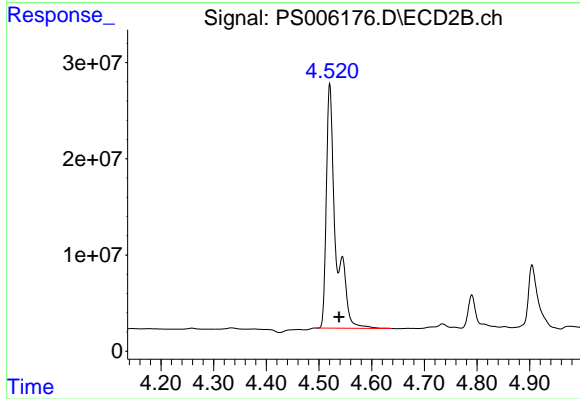
#1 Dalapon

R.T.: 1.758 min
 Delta R.T.: -0.022 min
 Response: 346898446
 Conc: 552.83 ng/ml



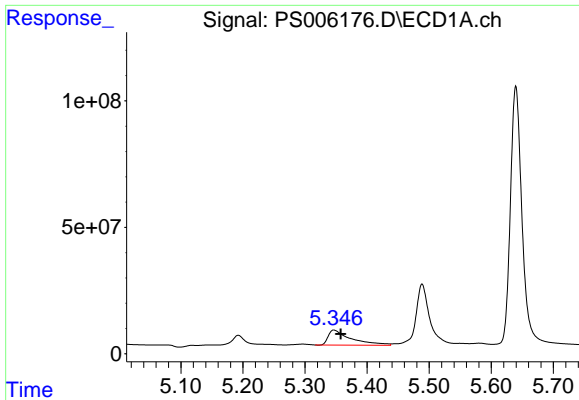
#2 3,5-DICHLOROBENZOIC ACID

R.T.: 4.854 min
 Delta R.T.: -0.017 min
 Response: 469598795
 Conc: 435.57 ng/ml



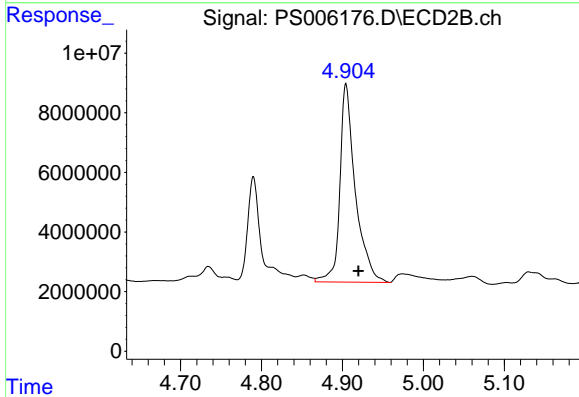
#2 3,5-DICHLOROBENZOIC ACID

R.T.: 4.521 min
 Delta R.T.: -0.017 min
 Response: 322554790
 Conc: 532.53 ng/ml

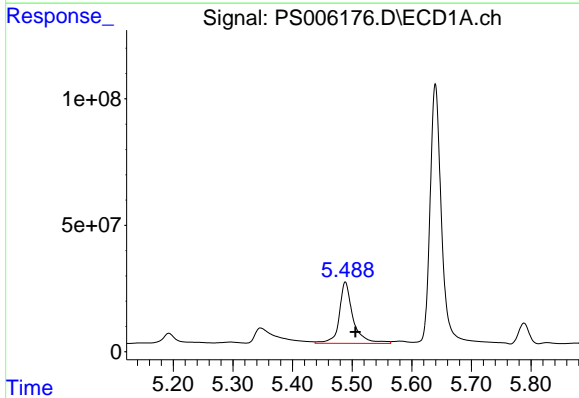


#3 4-Nitrophenol
 R.T.: 5.347 min
 Delta R.T.: -0.011 min
 Response: 151327611
 Conc: 403.09 ng/ml

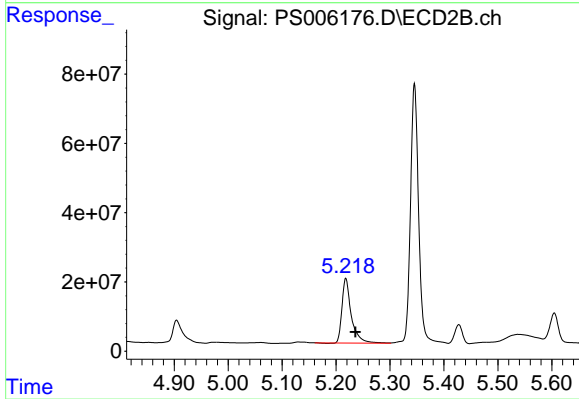
Instrument :
 ECD_S
 ClientSampled :



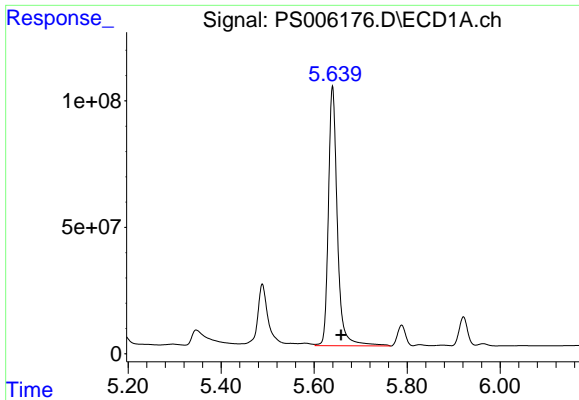
#3 4-Nitrophenol
 R.T.: 4.905 min
 Delta R.T.: -0.015 min
 Response: 88518944
 Conc: 357.33 ng/ml



#4 2,4-DCAA
 R.T.: 5.489 min
 Delta R.T.: -0.017 min
 Response: 391282225
 Conc: 453.29 ng/ml



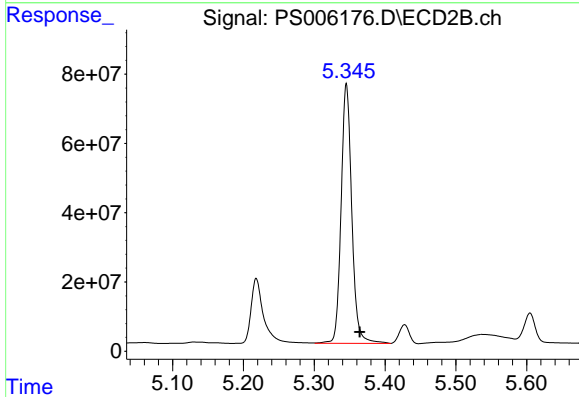
#4 2,4-DCAA
 R.T.: 5.218 min
 Delta R.T.: -0.017 min
 Response: 223355776
 Conc: 454.11 ng/ml



#5 DICAMBA

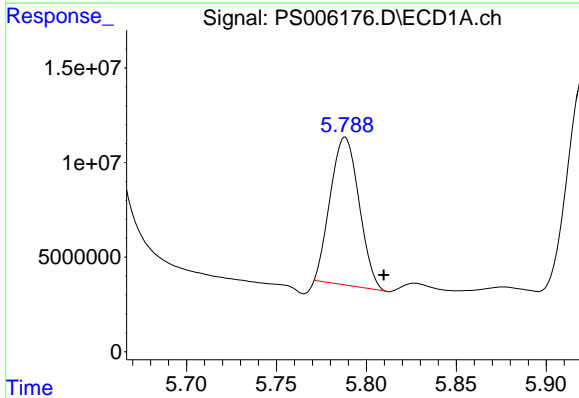
R.T.: 5.640 min
 Delta R.T.: -0.018 min
 Response: 1375803191
 Conc: 428.38 ng/ml

Instrument :
 ECD_S
 ClientSampleId :



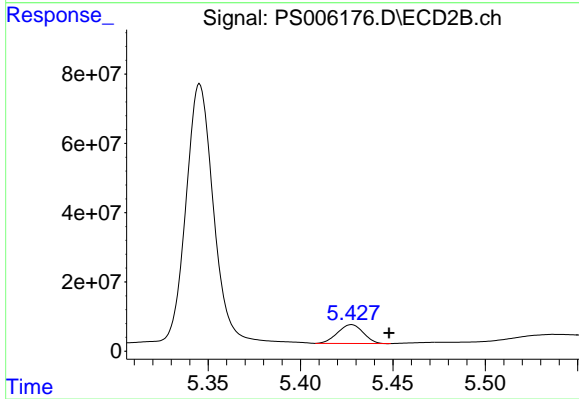
#5 DICAMBA

R.T.: 5.346 min
 Delta R.T.: -0.019 min
 Response: 785100533
 Conc: 425.64 ng/ml



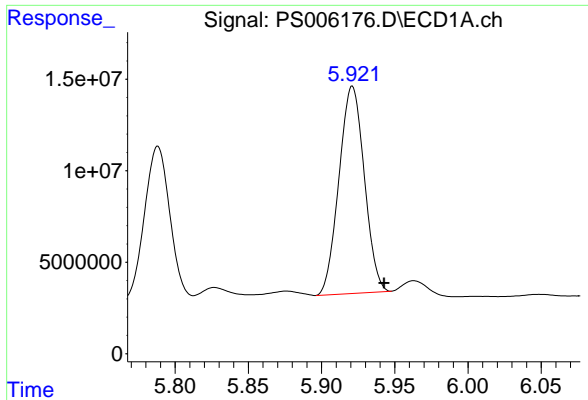
#6 MCP

R.T.: 5.788 min
 Delta R.T.: -0.021 min
 Response: 86665726
 Conc: 38.51 ug/ml



#6 MCP

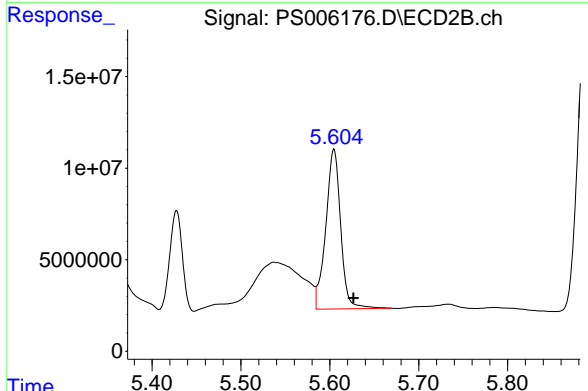
R.T.: 5.428 min
 Delta R.T.: -0.020 min
 Response: 52915406
 Conc: 42.77 ug/ml



#7 MCPA

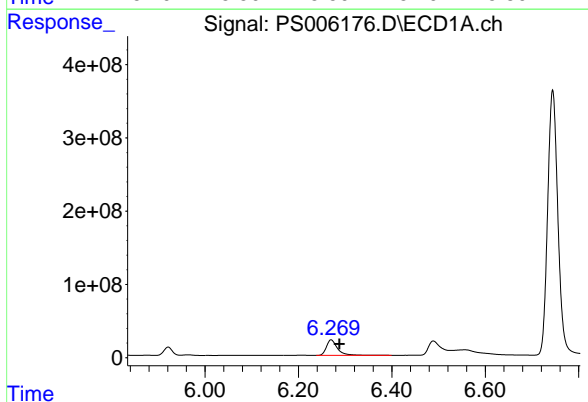
R.T.: 5.921 min
 Delta R.T.: -0.022 min
 Response: 136273289
 Conc: 43.16 ug/ml

Instrument :
 ECD_S
 ClientSampled :



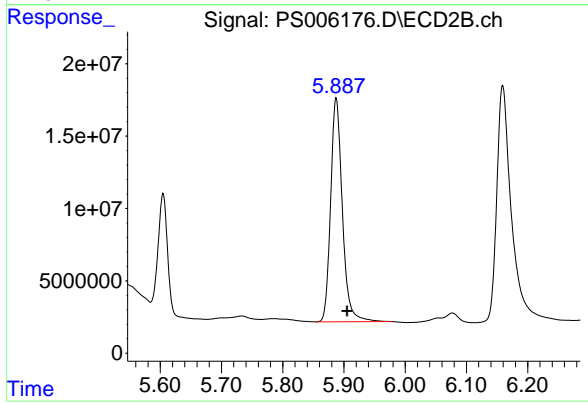
#7 MCPA

R.T.: 5.605 min
 Delta R.T.: -0.022 min
 Response: 101550527
 Conc: 49.69 ug/ml



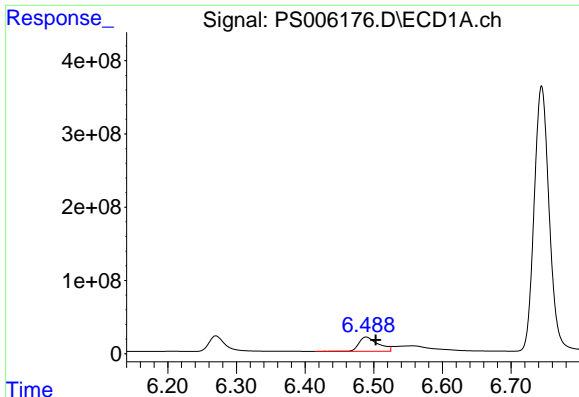
#8 DICHLORPROP

R.T.: 6.270 min
 Delta R.T.: -0.018 min
 Response: 349759448
 Conc: 461.20 ng/ml



#8 DICHLORPROP

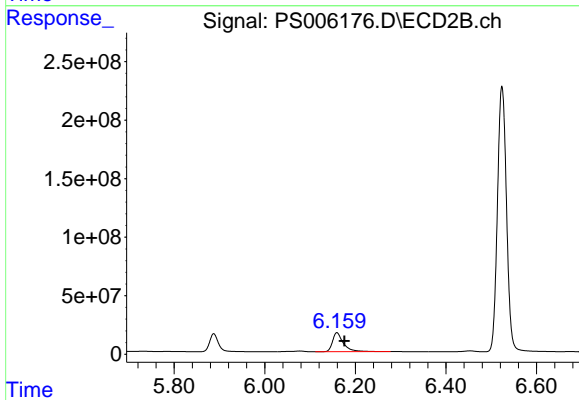
R.T.: 5.887 min
 Delta R.T.: -0.018 min
 Response: 205207995
 Conc: 461.55 ng/ml



#9 2,4-D

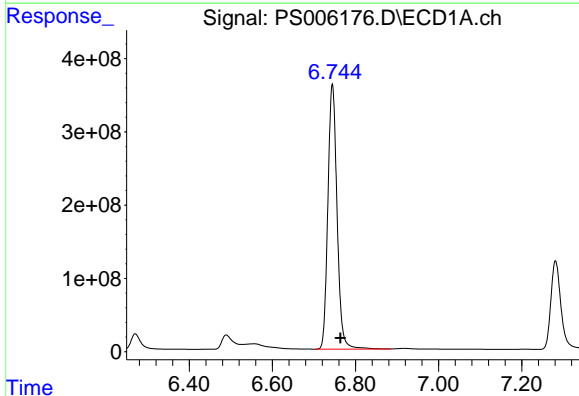
R.T.: 6.489 min
 Delta R.T.: -0.014 min
 Response: 379996930
 Conc: 466.38 ng/ml

Instrument :
 ECD_S
 ClientSampleId :



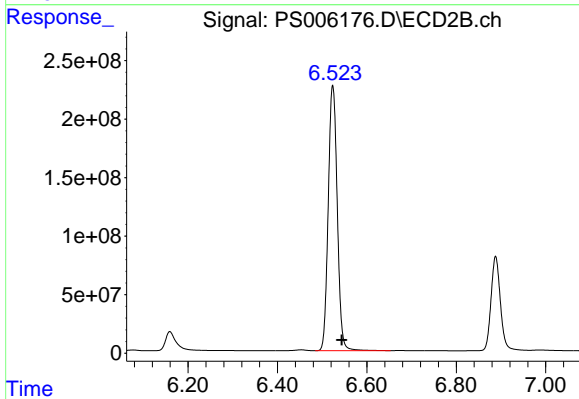
#9 2,4-D

R.T.: 6.159 min
 Delta R.T.: -0.016 min
 Response: 272738582
 Conc: 496.15 ng/ml



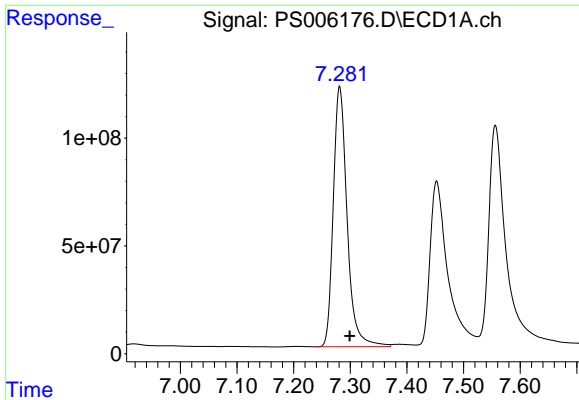
#10 Pentachlorophenol

R.T.: 6.744 min
 Delta R.T.: -0.020 min
 Response: 5541501304
 Conc: 468.79 ng/ml



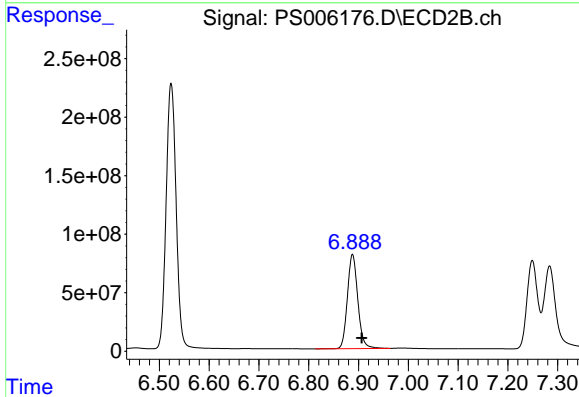
#10 Pentachlorophenol

R.T.: 6.524 min
 Delta R.T.: -0.020 min
 Response: 3165837024
 Conc: 468.32 ng/ml

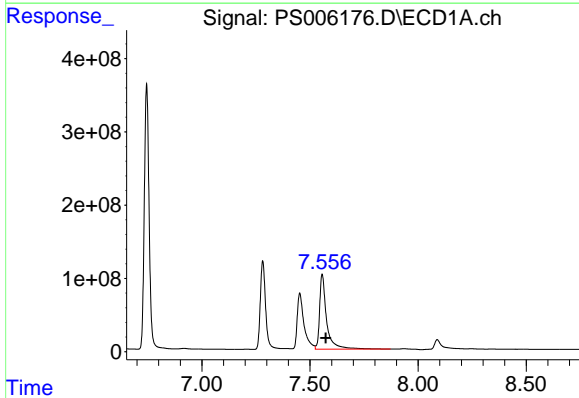


#11 2,4,5-TP (SILVEX)
 R.T.: 7.281 min
 Delta R.T.: -0.018 min
 Response: 2049195287
 Conc: 449.21 ng/ml

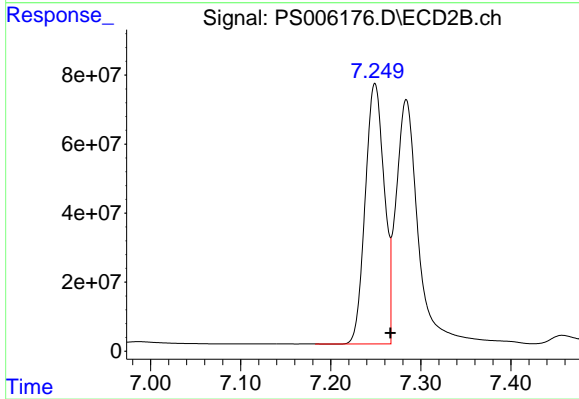
Instrument :
 ECD_S
 ClientSampled :



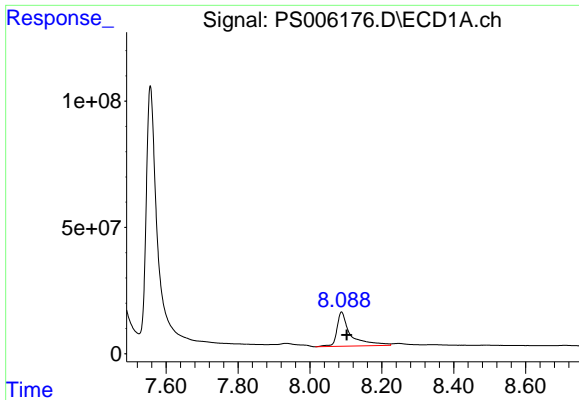
#11 2,4,5-TP (SILVEX)
 R.T.: 6.888 min
 Delta R.T.: -0.019 min
 Response: 1166388828
 Conc: 448.25 ng/ml



#12 2,4,5-T
 R.T.: 7.556 min
 Delta R.T.: -0.016 min
 Response: 2317277048
 Conc: 468.65 ng/ml



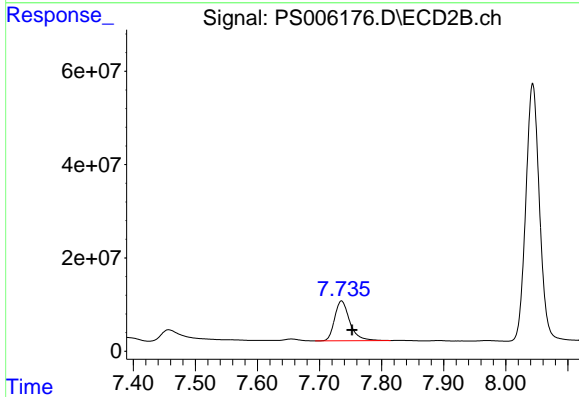
#12 2,4,5-T
 R.T.: 7.249 min
 Delta R.T.: -0.017 min
 Response: 1102959833
 Conc: 443.66 ng/ml



#13 2,4-DB

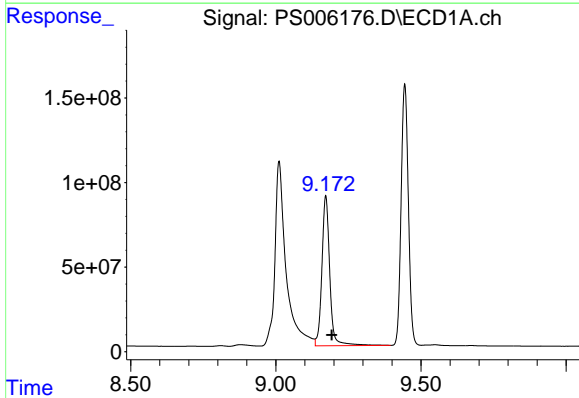
R.T.: 8.088 min
Delta R.T.: -0.014 min
Response: 361848569
Conc: 581.02 ng/ml

Instrument :
ECD_S
ClientSampleId :



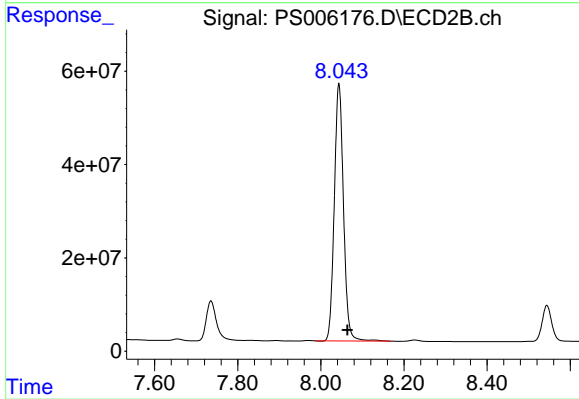
#13 2,4-DB

R.T.: 7.736 min
Delta R.T.: -0.017 min
Response: 143566834
Conc: 431.39 ng/ml



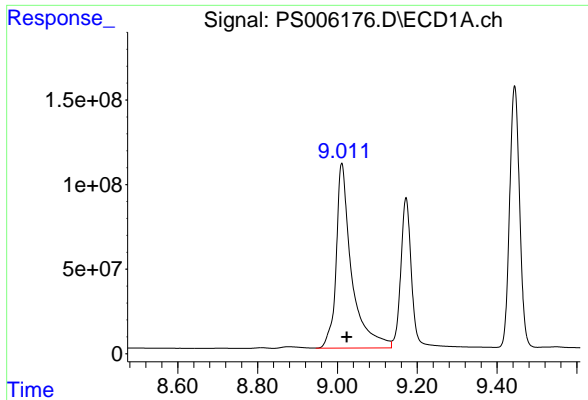
#14 DINOSEB

R.T.: 9.172 min
Delta R.T.: -0.020 min
Response: 1676846913
Conc: 458.06 ng/ml



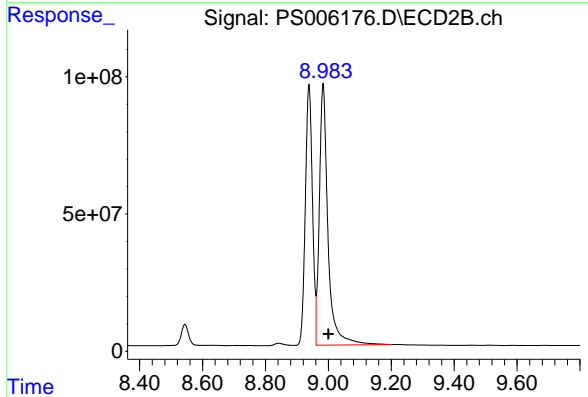
#14 DINOSEB

R.T.: 8.043 min
Delta R.T.: -0.020 min
Response: 846432960
Conc: 440.66 ng/ml

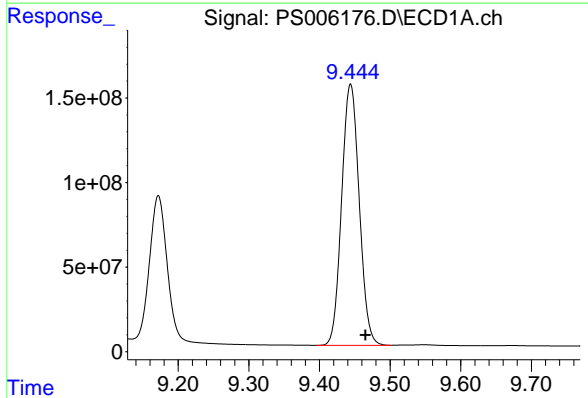


#15 Picloram
 R.T.: 9.011 min
 Delta R.T.: -0.013 min
 Response: 2939003891
 Conc: 394.99 ng/ml

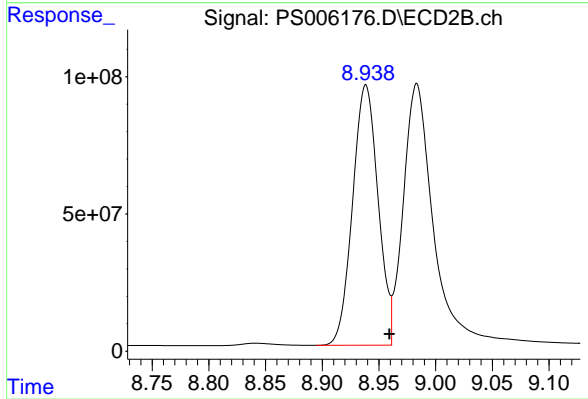
Instrument :
 ECD_S
 ClientSampleId :



#15 Picloram
 R.T.: 8.983 min
 Delta R.T.: -0.017 min
 Response: 1810563712
 Conc: 401.38 ng/ml



#16 DCPA
 R.T.: 9.444 min
 Delta R.T.: -0.021 min
 Response: 2672490032
 Conc: 461.13 ng/ml



#16 DCPA
 R.T.: 8.938 min
 Delta R.T.: -0.021 min
 Response: 1482637241
 Conc: 425.17 ng/ml