

Data Path : Z:\pestpcbsrv\HPCHEM1\ECD_S\Data\PS081621\
 Data File : PS016438.D
 Signal(s) : Signal #1: ECD1A.ch Signal #2: ECD2B.ch
 Acq On : 17 Aug 2021 04:35
 Operator : DD\AJ
 Sample : I.BLK
 Misc :
 ALS Vial : 2 Sample Multiplier: 1

Instrument :
 ECD_S
 ClientSampleId :

Integration File signal 1: autoint1.e
 Integration File signal 2: autoint2.e
 Quant Time: Aug 17 06:35:12 2021
 Quant Method : Z:\pestpcbsrv\HPCHEM1\ECD_S\Method\PS080221.M
 Quant Title : 8080.M
 QLast Update : Mon Aug 02 14:10:19 2021
 Response via : Initial Calibration
 Integrator: ChemStation

Volume Inj. : 2 µl
 Signal #1 Phase : Rtx-CLPesticides Signal #2 Phase: Rtx-CLPesticides2
 Signal #1 Info : 30M x 0.32mm x0.5 Signal #2 Info : 30M x 0.32mm x 0.25µm

Compound	RT#1	RT#2	Resp#1	Resp#2	ng/ml	ng/ml

System Monitoring Compounds						
4) S 2,4-DCAA	7.185	6.765	605.3E6	252.6E6	411.465	484.299
Target Compounds						
8) T DICHLORPROP	0.000	7.581	0	2696927	N.D.	4.978

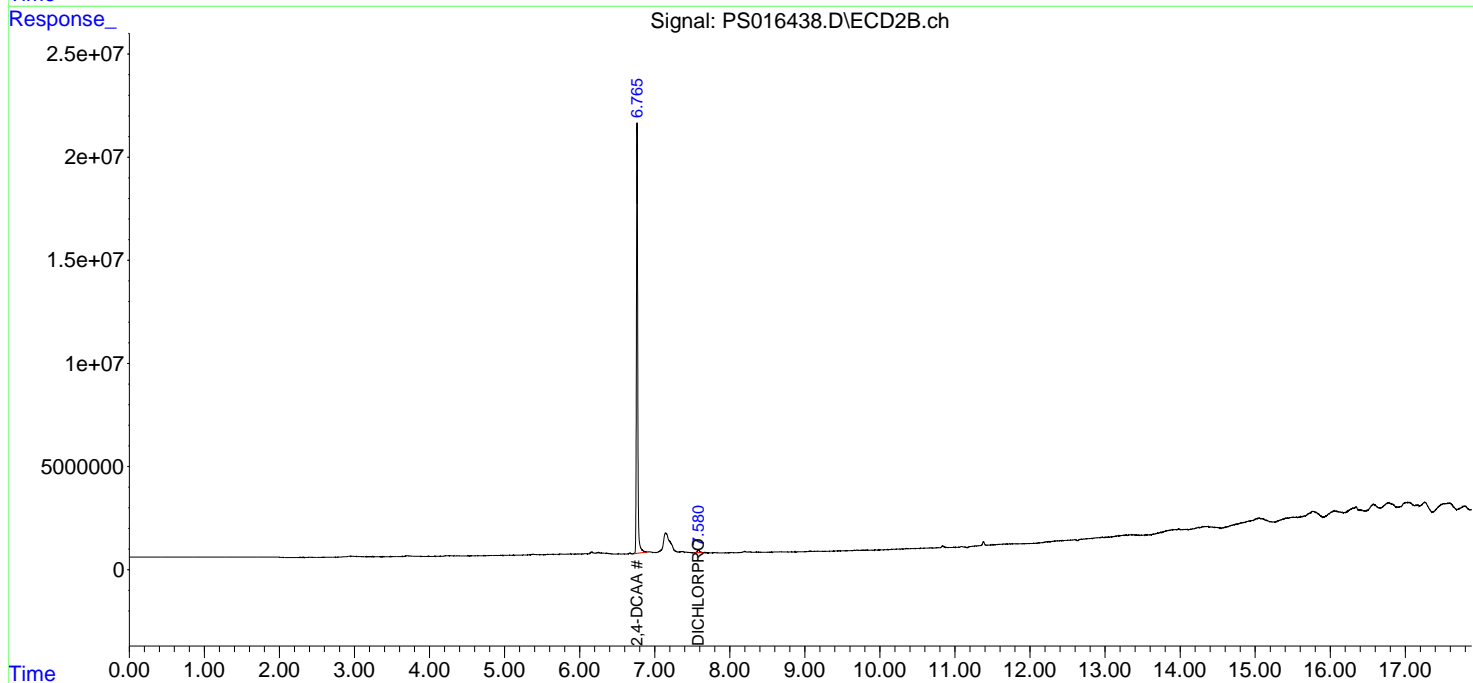
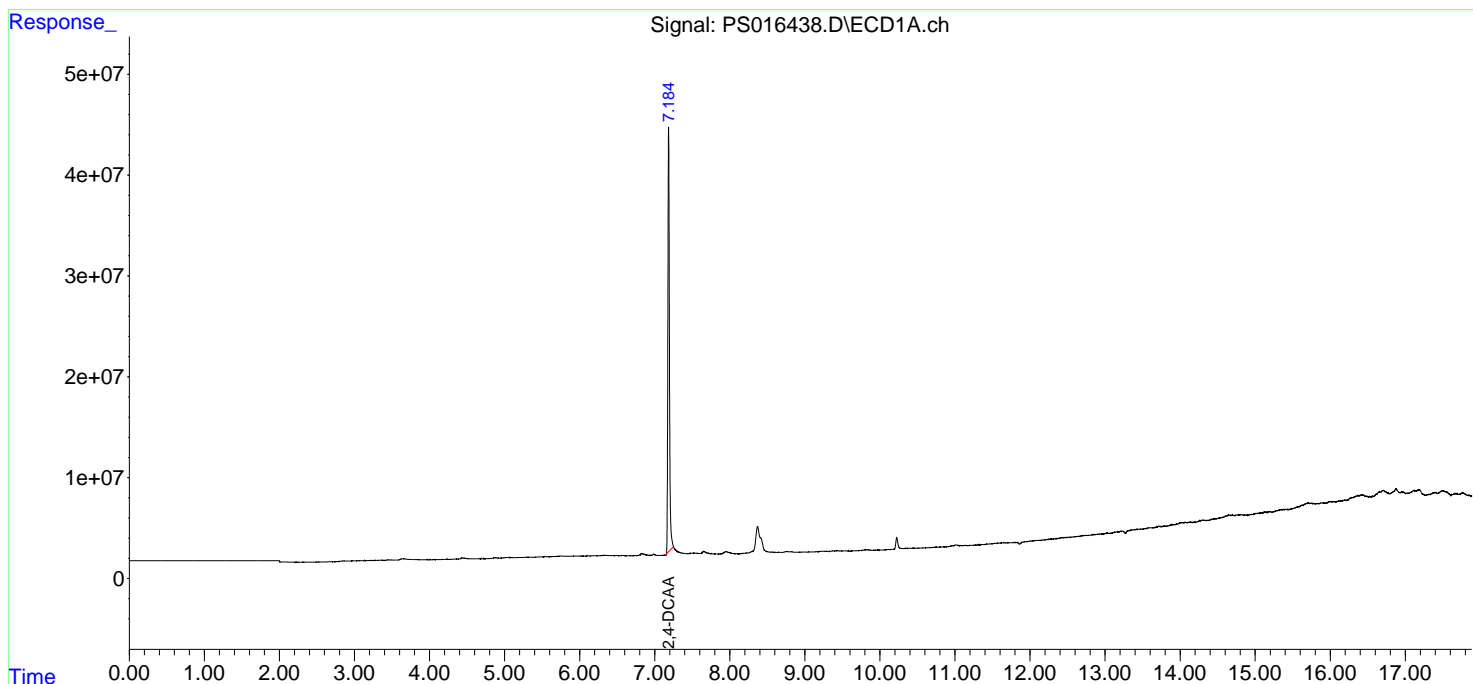
(f)=RT Delta > 1/2 Window (#)=Amounts differ by > 25% (m)=manual int.

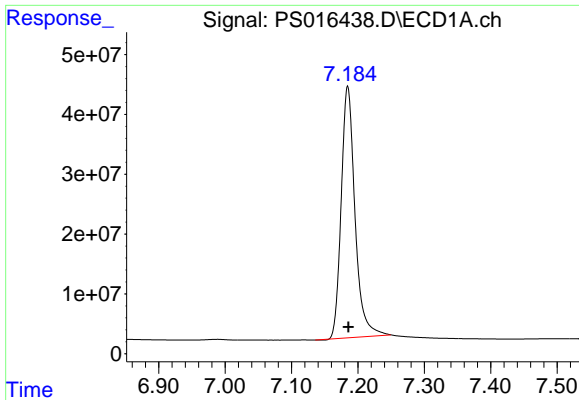
Data Path : Z:\pestpcbsrv\HPCHEM1\ECD_S\Data\PS081621\
Data File : PS016438.D
Signal(s) : Signal #1: ECD1A.ch Signal #2: ECD2B.ch
Acq On : 17 Aug 2021 04:35
Operator : DD\AJ
Sample : I.BLK
Misc :
ALS Vial : 2 Sample Multiplier: 1

Instrument :
ECD_S
ClientSampleId :

Integration File signal 1: autoint1.e
Integration File signal 2: autoint2.e
Quant Time: Aug 17 06:35:12 2021
Quant Method : Z:\pestpcbsrv\HPCHEM1\ECD_S\Method\PS080221.M
Quant Title : 8080.M
QLast Update : Mon Aug 02 14:10:19 2021
Response via : Initial Calibration
Integrator: ChemStation

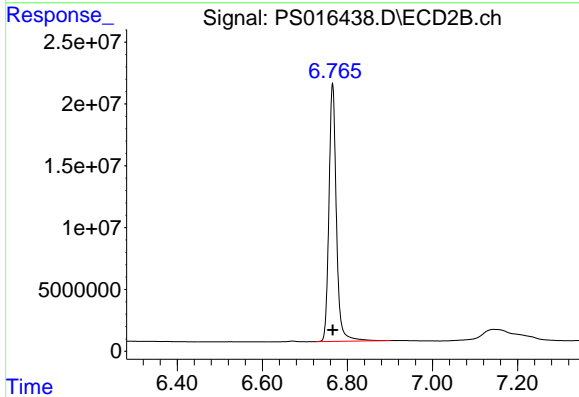
Volume Inj. : 2 µl
Signal #1 Phase : Rtx-CLPesticides Signal #2 Phase: Rtx-CLPesticides2
Signal #1 Info : 30M x 0.32mm x0.5 Signal #2 Info : 30M x 0.32mm x 0.25µm



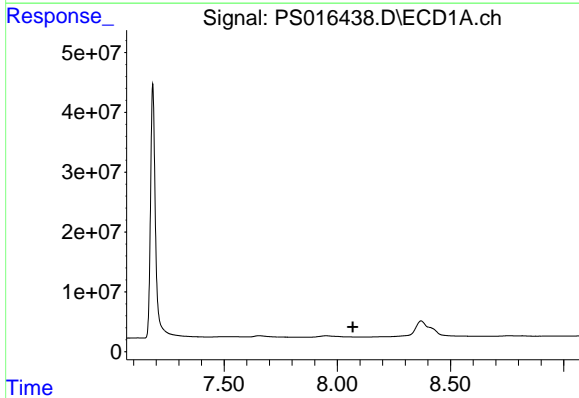


#4 2,4-DCAA
 R.T.: 7.185 min
 Delta R.T.: -0.001 min
 Response: 605309274
 Conc: 411.47 ng/ml

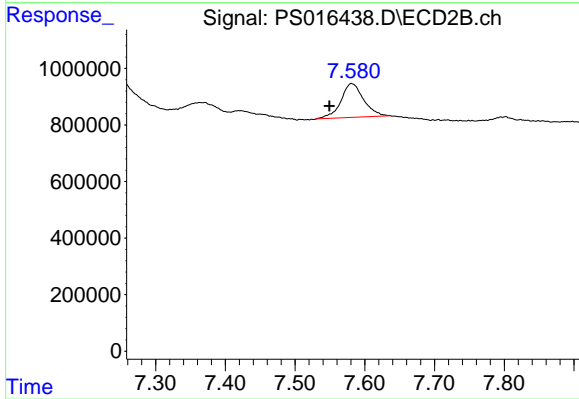
Instrument :
 ECD_S
 ClientSampleId :



#4 2,4-DCAA
 R.T.: 6.765 min
 Delta R.T.: 0.000 min
 Response: 252622147
 Conc: 484.30 ng/ml



#8 DICHLORPROP
 R.T.: 0.000 min
 Exp R.T. : 8.069 min
 Response: 0
 Conc: N.D.



#8 DICHLORPROP
 R.T.: 7.581 min
 Delta R.T.: 0.031 min
 Response: 2696927
 Conc: 4.98 ng/ml