

Data Path : Z:\pestpcbsrv\HPCHEM1\ECD_S\Data\PS081621\
 Data File : PS016445.D
 Signal(s) : Signal #1: ECD1A.ch Signal #2: ECD2B.ch
 Acq On : 17 Aug 2021 07:25
 Operator : DD\AJ
 Sample : M3397-09
 Misc :
 ALS Vial : 48 Sample Multiplier: 1

Instrument :
 ECD_S
ClientSampleId :
 SWCS-07-1015

Manual Integrations
APPROVED
 mohammad
 8/17/2021 12:45:54 PM

Integration File signal 1: autoint1.e
 Integration File signal 2: autoint2.e
 Quant Time: Aug 17 08:00:28 2021
 Quant Method : Z:\pestpcbsrv\HPCHEM1\ECD_S\Method\PS080221.M
 Quant Title : 8080.M
 QLast Update : Mon Aug 02 14:10:19 2021
 Response via : Initial Calibration
 Integrator: ChemStation

Volume Inj. : 2 µl
 Signal #1 Phase : Rtx-CLPesticides Signal #2 Phase: Rtx-CLPesticides2
 Signal #1 Info : 30M x 0.32mm x0.5 Signal #2 Info : 30M x 0.32mm x 0.25µm

Compound	RT#1	RT#2	Resp#1	Resp#2	ng/ml	ng/ml

System Monitoring Compounds						
4) S 2,4-DCAA	7.182	6.763	891.8E6	325.1E6	606.191	623.237m

Target Compounds

(f)=RT Delta > 1/2 Window (#)=Amounts differ by > 25% (m)=manual int.

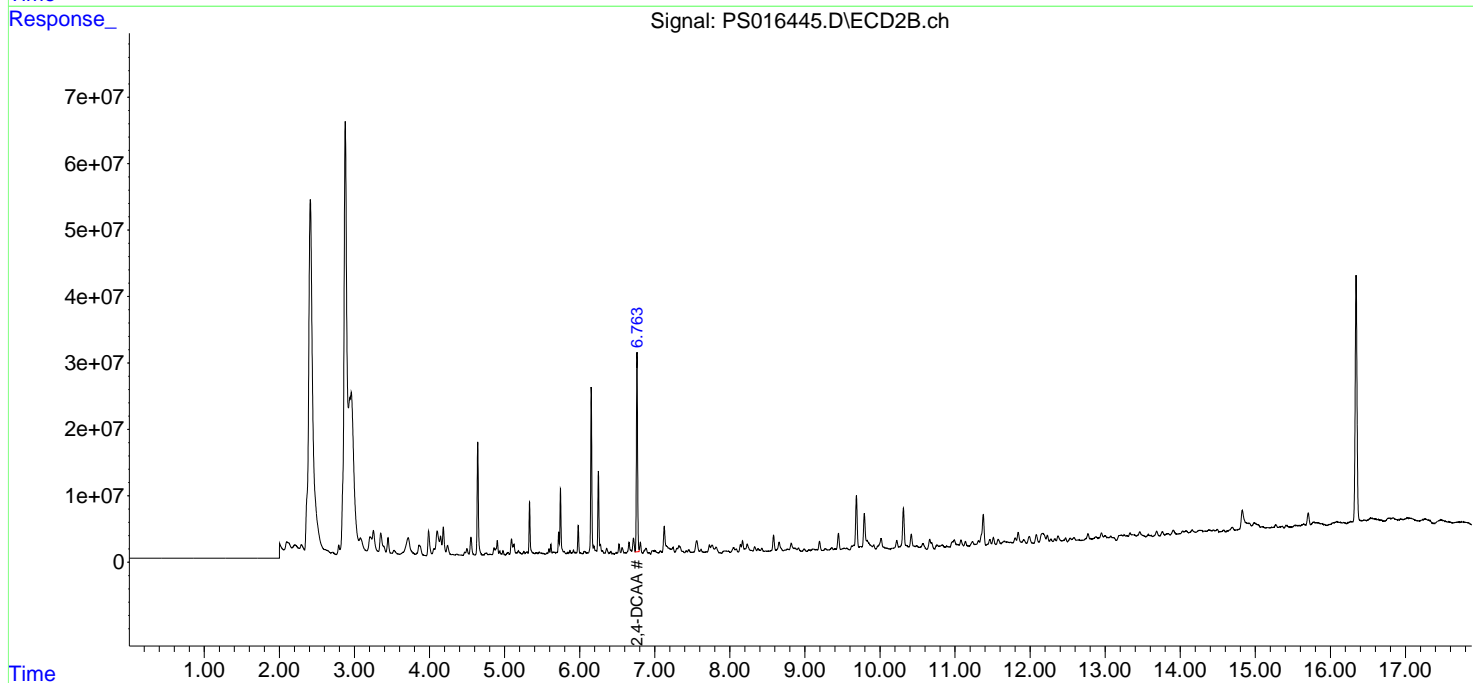
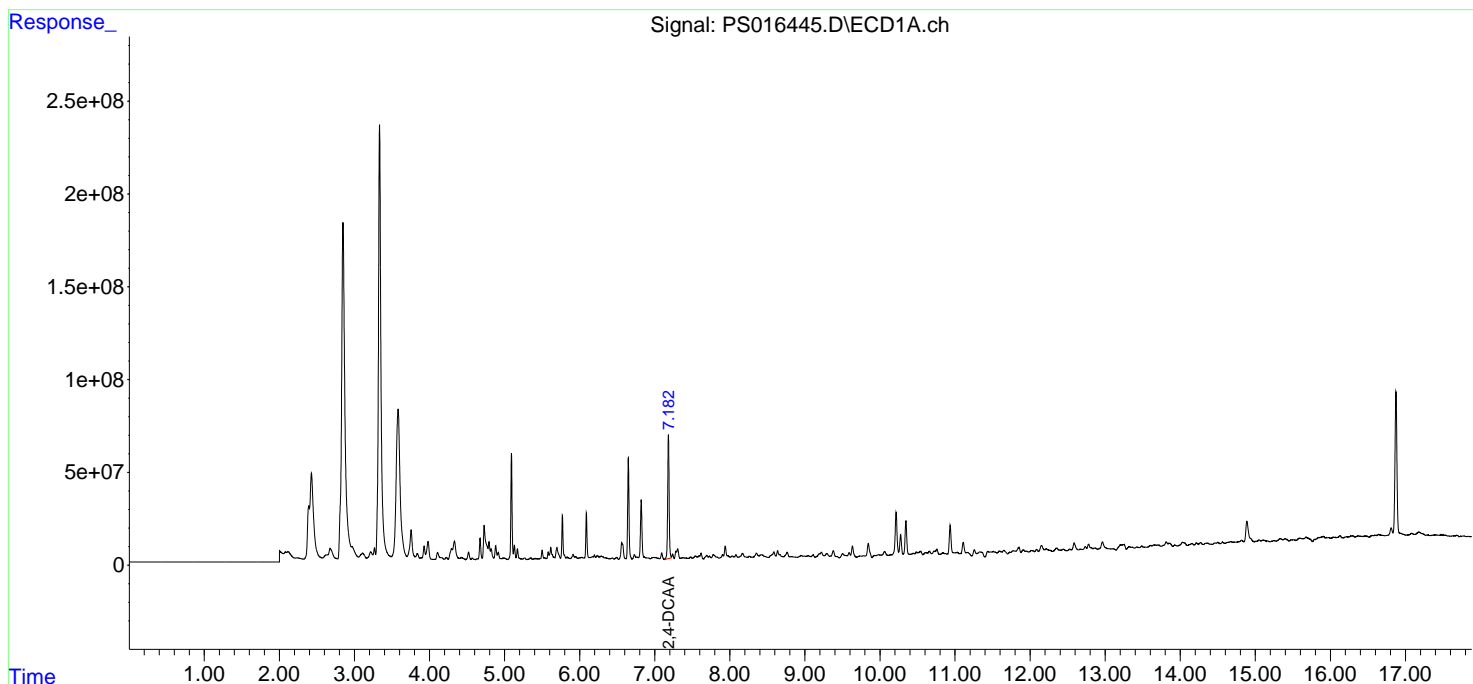
Data Path : Z:\pestpcbsrv\HPCHEM1\ECD_S\Data\PS081621\
 Data File : PS016445.D
 Signal(s) : Signal #1: ECD1A.ch Signal #2: ECD2B.ch
 Acq On : 17 Aug 2021 07:25
 Operator : DD\AJ
 Sample : M3397-09
 Misc :
 ALS Vial : 48 Sample Multiplier: 1

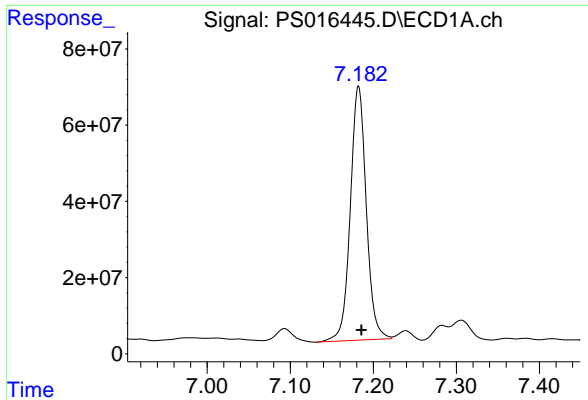
Instrument :
 ECD_S
ClientSampleId :
 SWCS-07-1015

Manual Integrations
APPROVED
 mohammad
 8/17/2021 12:45:54 PM

Integration File signal 1: autoint1.e
 Integration File signal 2: autoint2.e
 Quant Time: Aug 17 08:00:28 2021
 Quant Method : Z:\pestpcbsrv\HPCHEM1\ECD_S\Method\PS080221.M
 Quant Title : 8080.M
 QLast Update : Mon Aug 02 14:10:19 2021
 Response via : Initial Calibration
 Integrator: ChemStation

Volume Inj. : 2 µl
 Signal #1 Phase : Rtx-CLPesticides Signal #2 Phase: Rtx-CLPesticides2
 Signal #1 Info : 30M x 0.32mm x0.5 Signal #2 Info : 30M x 0.32mm x 0.25µm





#4 2,4-DCAA

R.T.: 7.182 min

Delta R.T.: -0.003 min

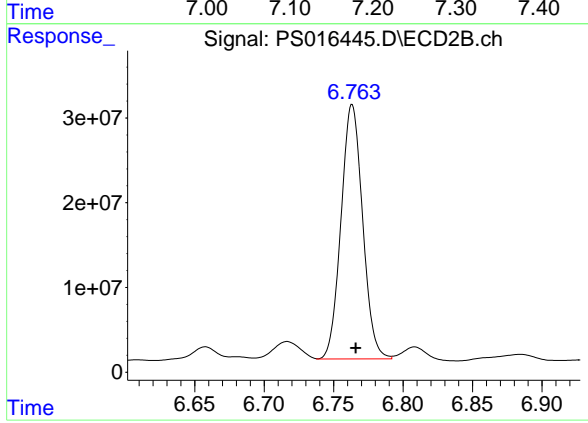
Response: 891771901

Conc: 606.19 ng/ml

Instrument :
ECD_S
ClientSampled :
SWCS-07-1015

Manual Integrations
APPROVED

mohammad
8/17/2021 12:45:54 PM



#4 2,4-DCAA

R.T.: 6.763 min

Delta R.T.: -0.003 min

Response: 325095547

Conc: 623.24 ng/ml m