

Data Path : Z:\pestpcbsrv\HPCHEM1\ECD_S\Data\PS081622\
 Data File : PS020297.D
 Signal(s) : Signal #1: ECD1A.ch Signal #2: ECD2B.ch
 Acq On : 16 Aug 2022 11:53
 Operator : AJ\MA
 Sample : N4197-02MS
 Misc :
 ALS Vial : 8 Sample Multiplier: 1

Instrument :
 ECD_S
ClientSampleId :
 TT-203-IDWSO-20220811-1MS

Manual Integrations
APPROVED

Reviewed By :Yogesh Patel 08/17/2022
 Supervised By :Ankita Jodhani 08/17/2022

Integration File signal 1: autoint1.e
 Integration File signal 2: autoint2.e
 Quant Time: Aug 16 23:48:56 2022
 Quant Method : Z:\pestpcbsrv\HPCHEM1\ECD_S\Method\PS080322.M
 Quant Title : 8080.M
 QLast Update : Thu Aug 04 02:05:37 2022
 Response via : Initial Calibration
 Integrator: ChemStation

Volume Inj. : 2 µl
 Signal #1 Phase : Rtx-CLPesticides Signal #2 Phase: Rtx-CLPesticides2
 Signal #1 Info : 30M x 0.32mm x0.5 Signal #2 Info : 30M x 0.32mm x 0.25µm

	Compound	RT#1	RT#2	Resp#1	Resp#2	ng/ml	ng/ml

System Monitoring Compounds							
4) S	2,4-DCAA	7.175	6.755	844.0E6	338.6E6	286.236	415.501 #
Target Compounds							
1) T	Dalapon	3.001	2.520	1479.8E6	538.3E6	305.661	495.833 #
2) T	3,5-DICHL...	6.392	5.942	1204.5E6	408.7E6	309.650	323.687
3) T	4-Nitroph...	7.004	6.375	380.5E6	133.5E6	273.952m	271.820
5) T	DICAMBA	7.365	6.918	3719.4E6	1256.6E6	323.184	352.562m
6) T	MCP P	7.532	7.014	223.8E6	82622901	24.126	30.288 #
7) T	MCPA	7.680	7.222	391.7E6	166.7E6	30.413	39.603 #
8) T	DICHLORPROP	8.055	7.537	859.7E6	369.1E6	300.344	394.738 #
9) T	2,4-D	8.284	7.827	1569.9E6	509.8E6	521.269	434.593
10) T	Pentachlo...	8.591	8.252	10423.9E6	3596.8E6	266.478	281.086
11) T	2,4,5-TP ...	9.141	8.613	5292.8E6	1783.0E6	310.646	333.364
12) T	2,4,5-T	9.428	8.996	5430.5E6	1839.5E6	299.180	361.363
13) T	2,4-DB	9.978	9.500	831.4E6	466.4E6	227.822	685.717 #
14) T	DINOSEB	11.117	9.819	1170.3E6	634.7E6	73.558m	167.279 #
15) T	Picloram	10.954	10.799	11895.4E6	4056.2E6	376.215	537.621 #
16) T	DCPA	11.398	10.746	9615.8E6	3052.2E6	391.128	460.344

(f)=RT Delta > 1/2 Window (#)=Amounts differ by > 25% (m)=manual int.

Data Path : Z:\pestpcbsrv\HPCHEM1\ECD_S\Data\PS081622\
 Data File : PS020297.D
 Signal(s) : Signal #1: ECD1A.ch Signal #2: ECD2B.ch
 Acq On : 16 Aug 2022 11:53
 Operator : AJ\MA
 Sample : N4197-02MS
 Misc :
 ALS Vial : 8 Sample Multiplier: 1

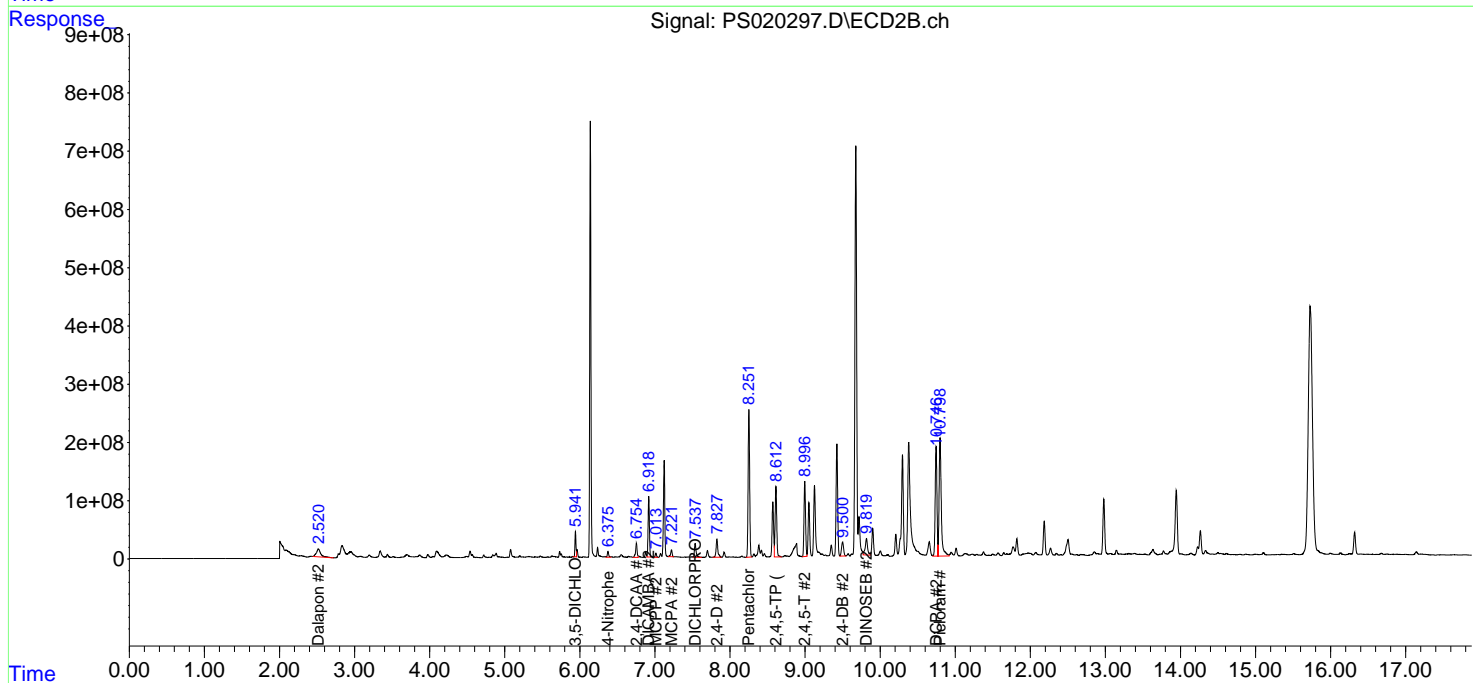
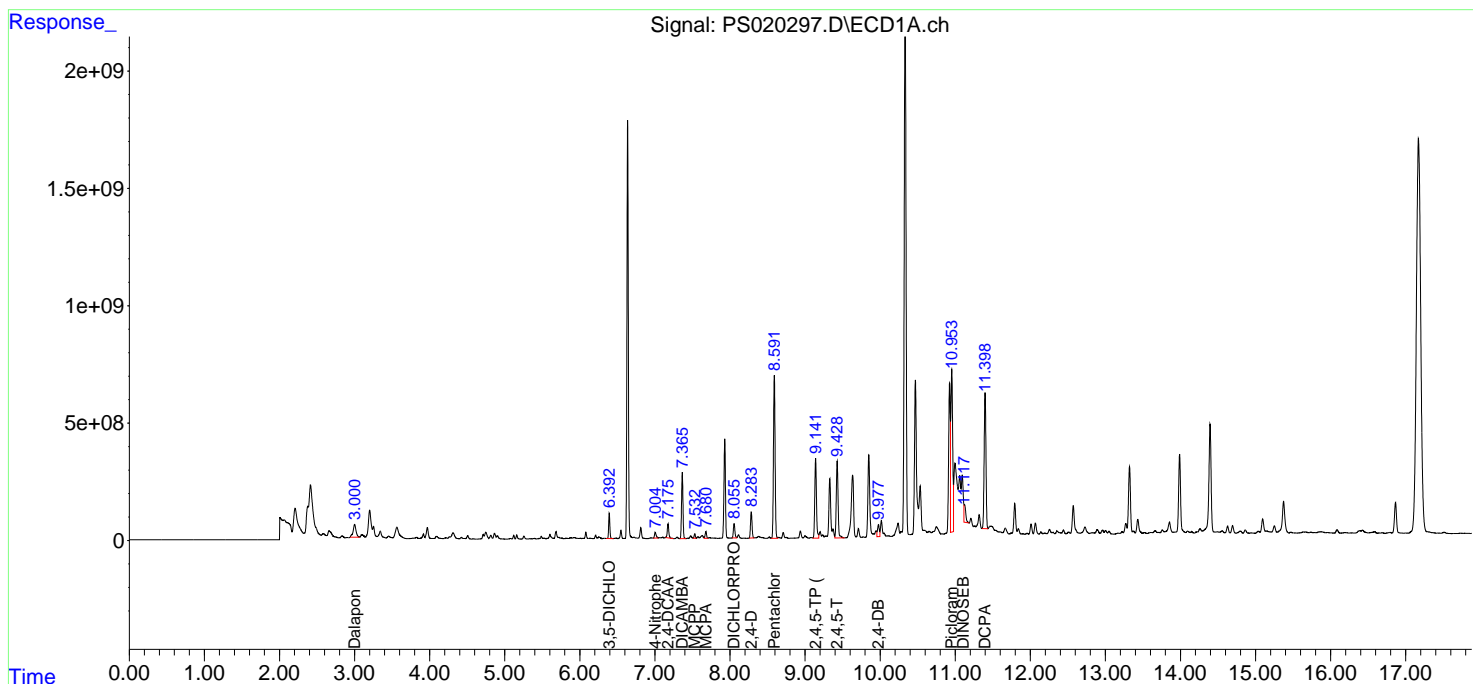
Instrument :
 ECD_S
 ClientSampleId :
 TT-203-IDWSO-20220811-1MS

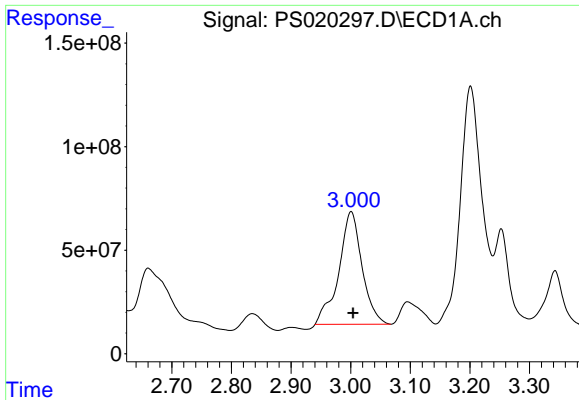
Manual Integrations
 APPROVED

Reviewed By :Yogesh Patel 08/17/2022
 Supervised By :Ankita Jodhani 08/17/2022

Integration File signal 1: autoint1.e
 Integration File signal 2: autoint2.e
 Quant Time: Aug 16 23:48:56 2022
 Quant Method : Z:\pestpcbsrv\HPCHEM1\ECD_S\Method\PS080322.M
 Quant Title : 8080.M
 QLast Update : Thu Aug 04 02:05:37 2022
 Response via : Initial Calibration
 Integrator: ChemStation

Volume Inj. : 2 µl
 Signal #1 Phase : Rtx-CLPesticides Signal #2 Phase: Rtx-CLPesticides2
 Signal #1 Info : 30M x 0.32mm x0.5 Signal #2 Info : 30M x 0.32mm x 0.25µm





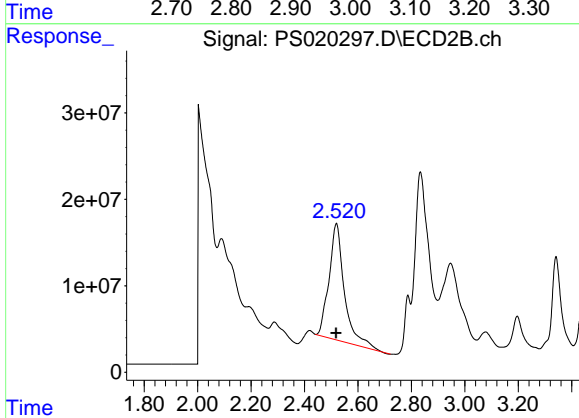
#1 Dalapon

R.T.: 3.001 min
 Delta R.T.: -0.003 min
 Response: 1479796924
 Conc: 305.66 ng/ml

Instrument : ECD_S
 ClientSampleId : TT-203-IDWSO-20220811-1MS

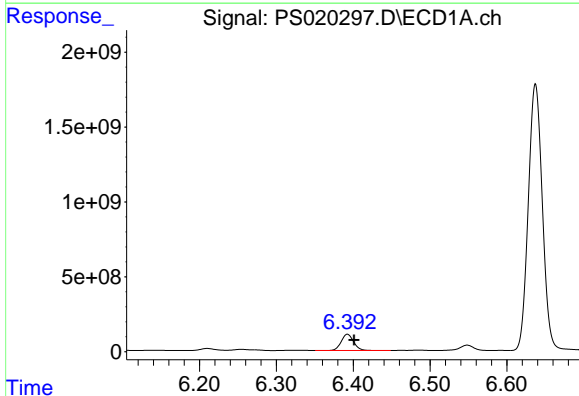
Manual Integrations
APPROVED

Reviewed By :Yogesh Patel 08/17/2022
 Supervised By :Ankita Jodhani 08/17/2022



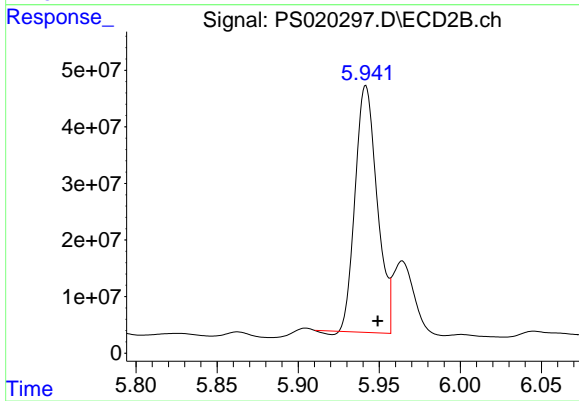
#1 Dalapon

R.T.: 2.520 min
 Delta R.T.: 0.000 min
 Response: 538297067
 Conc: 495.83 ng/ml



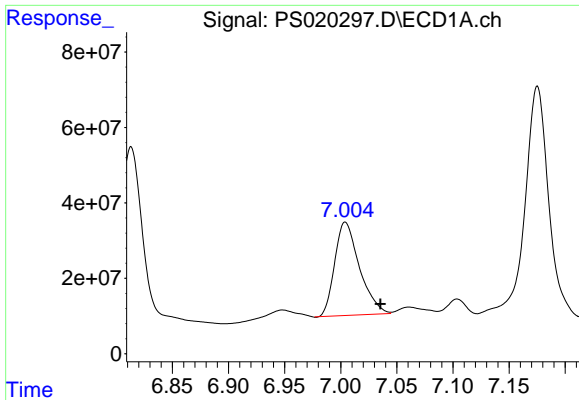
#2 3,5-DICHLOROBENZOIC ACID

R.T.: 6.392 min
 Delta R.T.: -0.009 min
 Response: 1204508750
 Conc: 309.65 ng/ml



#2 3,5-DICHLOROBENZOIC ACID

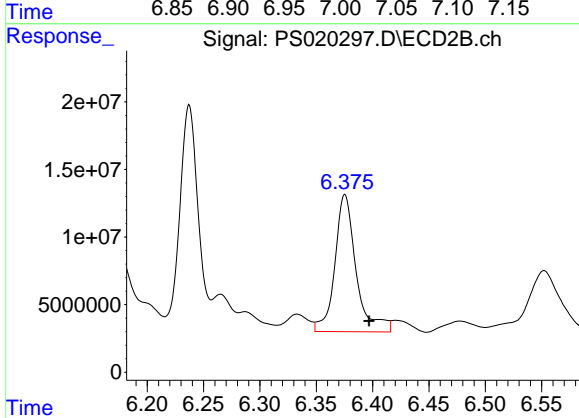
R.T.: 5.942 min
 Delta R.T.: -0.007 min
 Response: 408691344
 Conc: 323.69 ng/ml



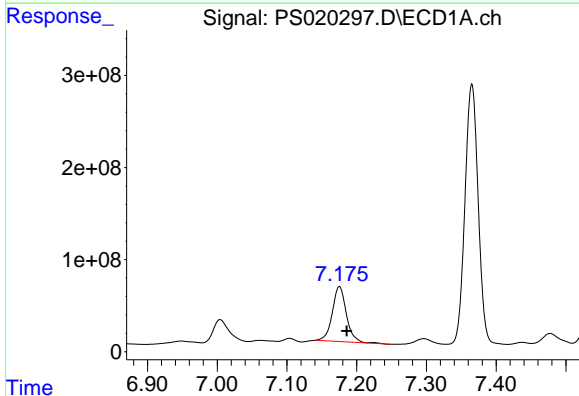
#3 4-Nitrophenol
 R.T.: 7.004 min
 Delta R.T.: -0.032 min
 Response: 380525286
 Conc: 273.95 ng/ml

Instrument : ECD_S
 ClientSampleId : TT-203-IDWSO-20220811-1MS

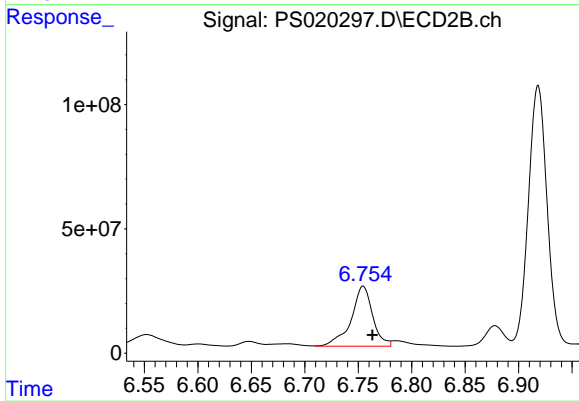
Manual Integrations
APPROVED
 Reviewed By :Yogesh Patel 08/17/2022
 Supervised By :Ankita Jodhani 08/17/2022



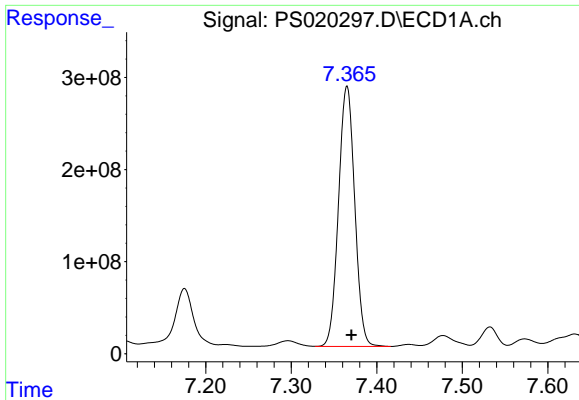
#3 4-Nitrophenol
 R.T.: 6.375 min
 Delta R.T.: -0.021 min
 Response: 133496340
 Conc: 271.82 ng/ml



#4 2,4-DCAA
 R.T.: 7.175 min
 Delta R.T.: -0.010 min
 Response: 844029867
 Conc: 286.24 ng/ml



#4 2,4-DCAA
 R.T.: 6.755 min
 Delta R.T.: -0.009 min
 Response: 338615351
 Conc: 415.50 ng/ml



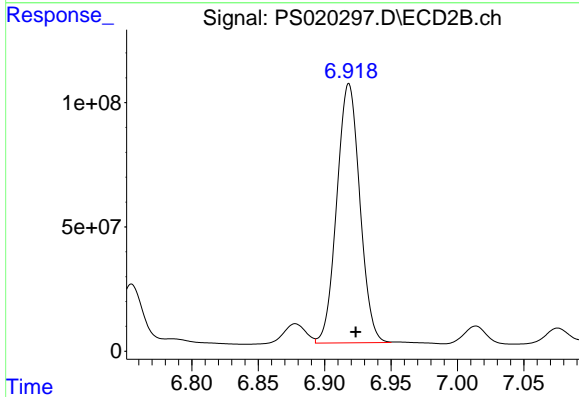
#5 DICAMBA

R.T.: 7.365 min
 Delta R.T.: -0.005 min
 Response: 3719413949
 Conc: 323.18 ng/ml

Instrument : ECD_S
 ClientSampleId : TT-203-IDWSO-20220811-1MS

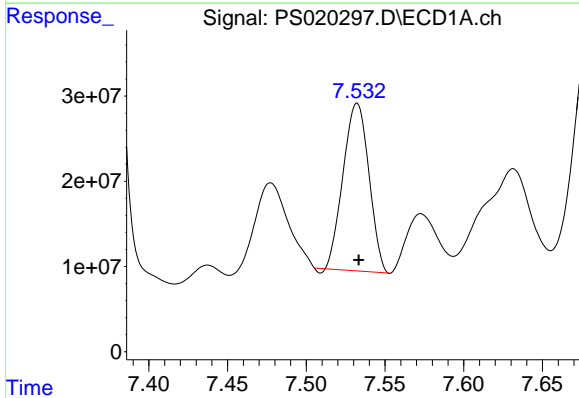
Manual Integrations
 APPROVED

Reviewed By :Yogesh Patel 08/17/2022
 Supervised By :Ankita Jodhani 08/17/2022



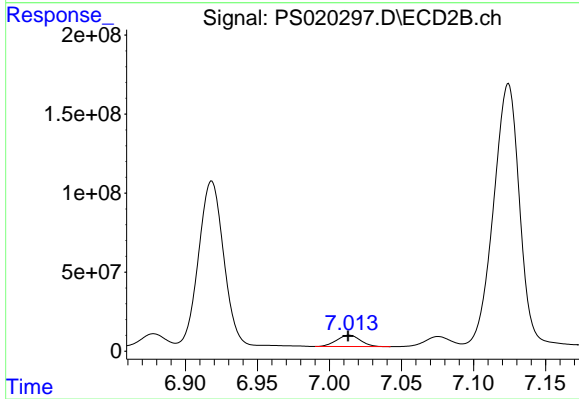
#5 DICAMBA

R.T.: 6.918 min
 Delta R.T.: -0.006 min
 Response: 1256575058
 Conc: 352.56 ng/ml m



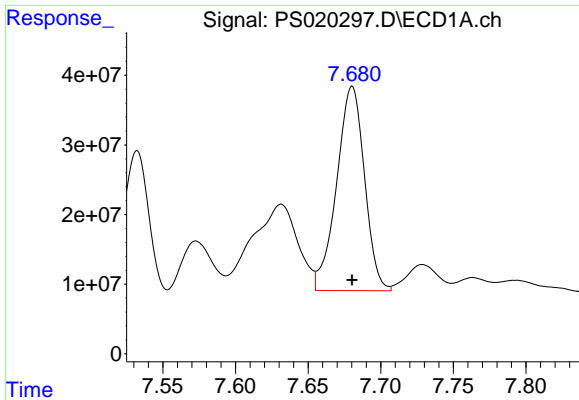
#6 MCPP

R.T.: 7.532 min
 Delta R.T.: -0.001 min
 Response: 223803107
 Conc: 24.13 ug/ml



#6 MCPP

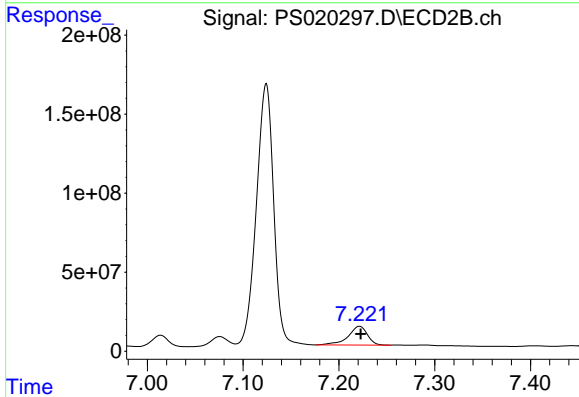
R.T.: 7.014 min
 Delta R.T.: 0.000 min
 Response: 82622901
 Conc: 30.29 ug/ml



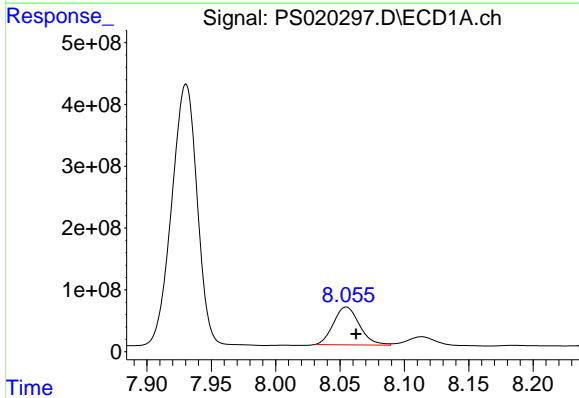
#7 MCPA
 R.T.: 7.680 min
 Delta R.T.: 0.000 min
 Response: 391732414
 Conc: 30.41 ug/ml

Instrument : ECD_S
 ClientSampleId : TT-203-IDWSO-20220811-1MS

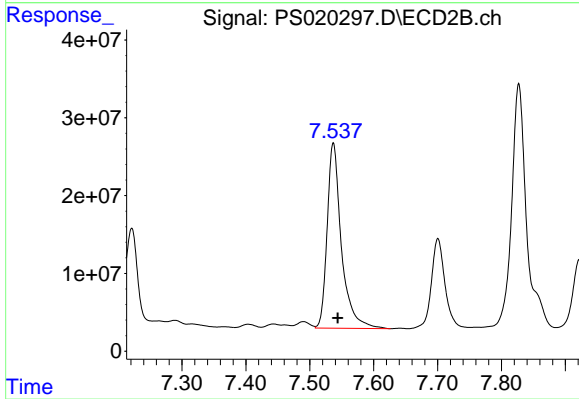
Manual Integrations
APPROVED
 Reviewed By :Yogesh Patel 08/17/2022
 Supervised By :Ankita Jodhani 08/17/2022



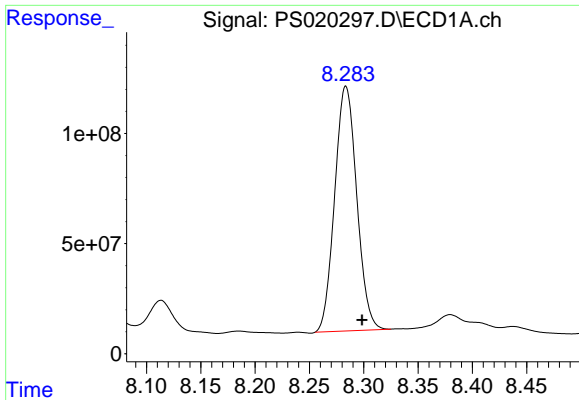
#7 MCPA
 R.T.: 7.222 min
 Delta R.T.: -0.001 min
 Response: 166717345
 Conc: 39.60 ug/ml



#8 DICHLORPROP
 R.T.: 8.055 min
 Delta R.T.: -0.008 min
 Response: 859733435
 Conc: 300.34 ng/ml



#8 DICHLORPROP
 R.T.: 7.537 min
 Delta R.T.: -0.007 min
 Response: 369134828
 Conc: 394.74 ng/ml



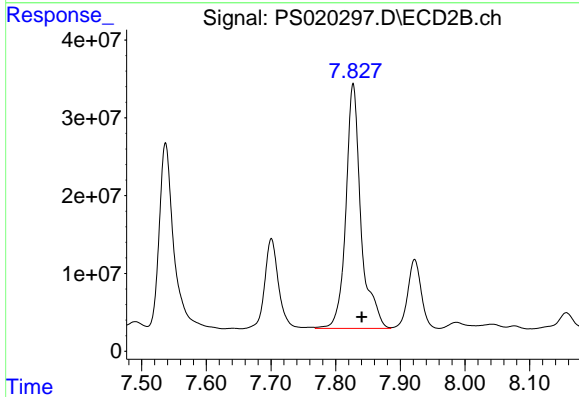
#9 2,4-D

R.T.: 8.284 min
 Delta R.T.: -0.015 min
 Response: 1569898047
 Conc: 521.27 ng/ml

Instrument : ECD_S
 ClientSampleId : TT-203-IDWSO-20220811-1MS

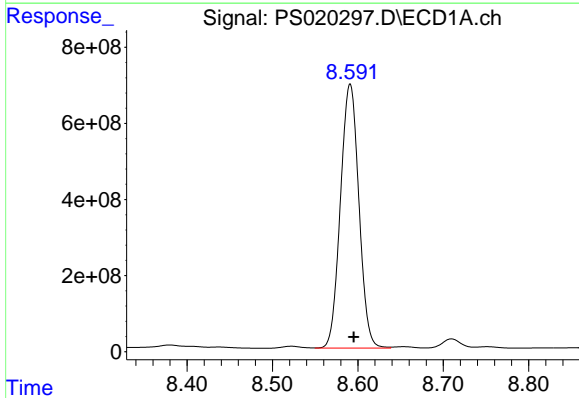
Manual Integrations
 APPROVED

Reviewed By :Yogesh Patel 08/17/2022
 Supervised By :Ankita Jodhani 08/17/2022



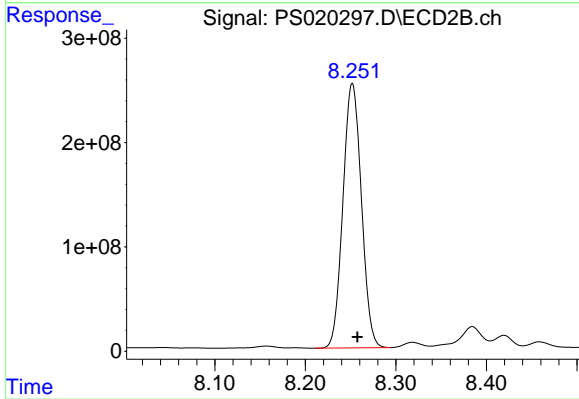
#9 2,4-D

R.T.: 7.827 min
 Delta R.T.: -0.013 min
 Response: 509766632
 Conc: 434.59 ng/ml



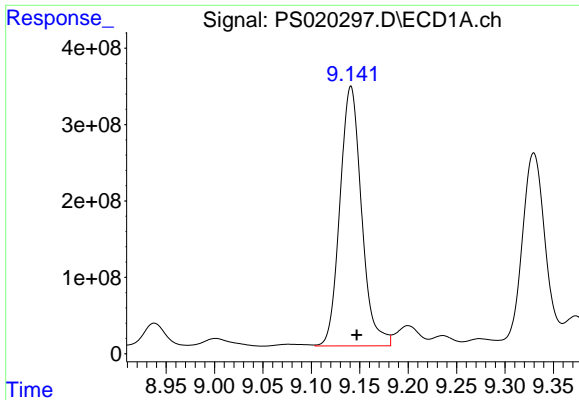
#10 Pentachlorophenol

R.T.: 8.591 min
 Delta R.T.: -0.004 min
 Response: 10423903343
 Conc: 266.48 ng/ml



#10 Pentachlorophenol

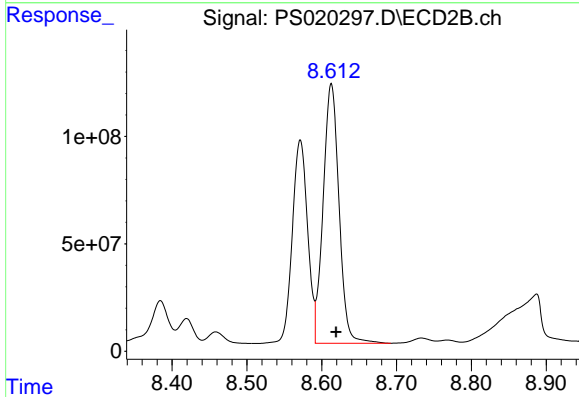
R.T.: 8.252 min
 Delta R.T.: -0.006 min
 Response: 3596800249
 Conc: 281.09 ng/ml



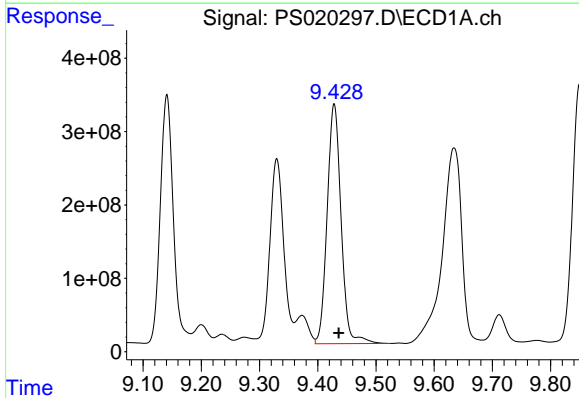
#11 2,4,5-TP (SILVEX)
 R.T.: 9.141 min
 Delta R.T.: -0.006 min
 Response: 5292805335
 Conc: 310.65 ng/ml

Instrument : ECD_S
 ClientSampleId : TT-203-IDWSO-20220811-1MS

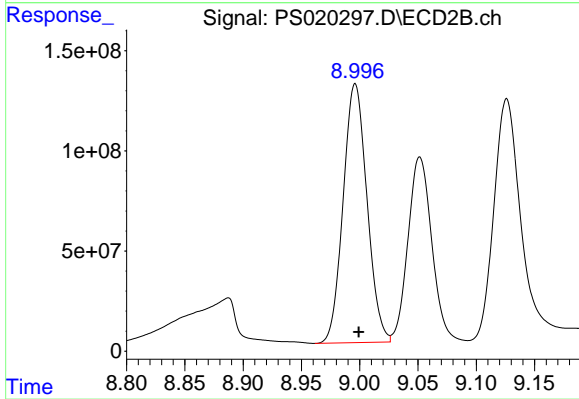
Manual Integrations
APPROVED
 Reviewed By :Yogesh Patel 08/17/2022
 Supervised By :Ankita Jodhani 08/17/2022



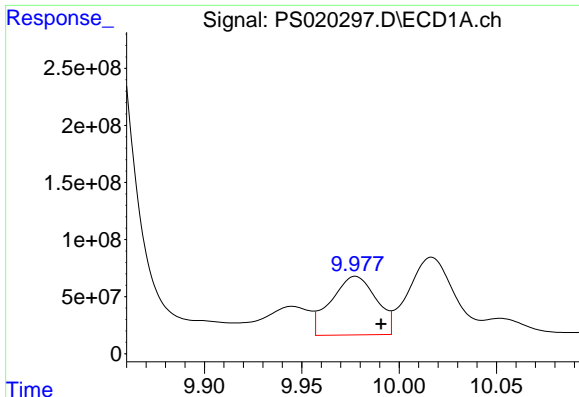
#11 2,4,5-TP (SILVEX)
 R.T.: 8.613 min
 Delta R.T.: -0.007 min
 Response: 1783041249
 Conc: 333.36 ng/ml



#12 2,4,5-T
 R.T.: 9.428 min
 Delta R.T.: -0.008 min
 Response: 5430497373
 Conc: 299.18 ng/ml



#12 2,4,5-T
 R.T.: 8.996 min
 Delta R.T.: -0.003 min
 Response: 1839451163
 Conc: 361.36 ng/ml



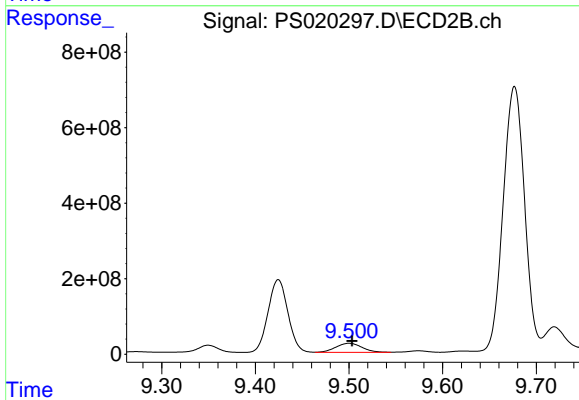
#13 2,4-DB

R.T.: 9.978 min
 Delta R.T.: -0.013 min
 Response: 831438140
 Conc: 227.82 ng/ml

Instrument :
 ECD_S
 ClientSampleId :
 TT-203-IDWSO-20220811-1MS

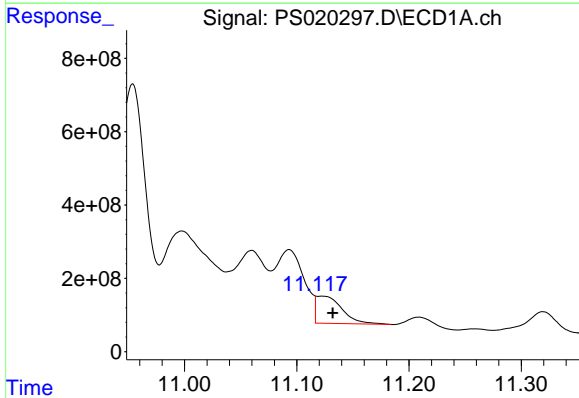
Manual Integrations
 APPROVED

Reviewed By :Yogesh Patel 08/17/2022
 Supervised By :Ankita Jodhani 08/17/2022



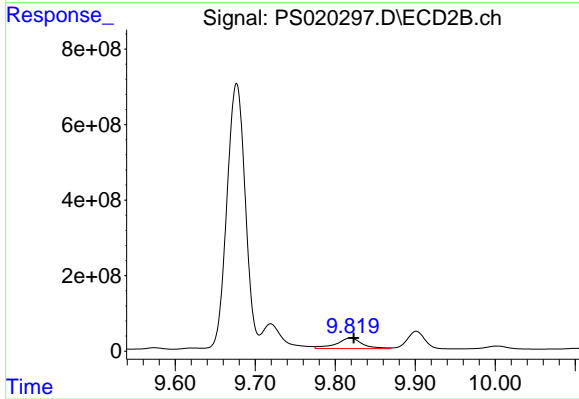
#13 2,4-DB

R.T.: 9.500 min
 Delta R.T.: -0.003 min
 Response: 466383531
 Conc: 685.72 ng/ml



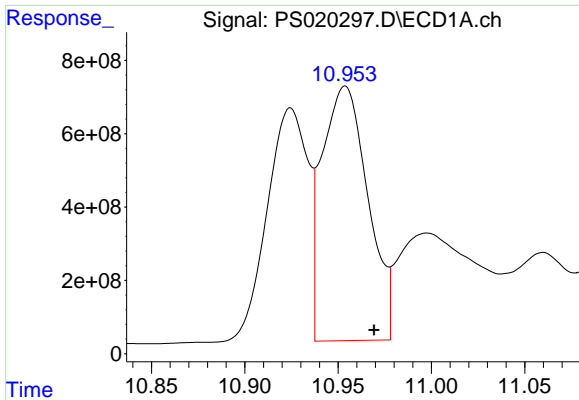
#14 DINOSEB

R.T.: 11.117 min
 Delta R.T.: -0.016 min
 Response: 1170250593
 Conc: 73.56 ng/ml m



#14 DINOSEB

R.T.: 9.819 min
 Delta R.T.: -0.004 min
 Response: 634698314
 Conc: 167.28 ng/ml



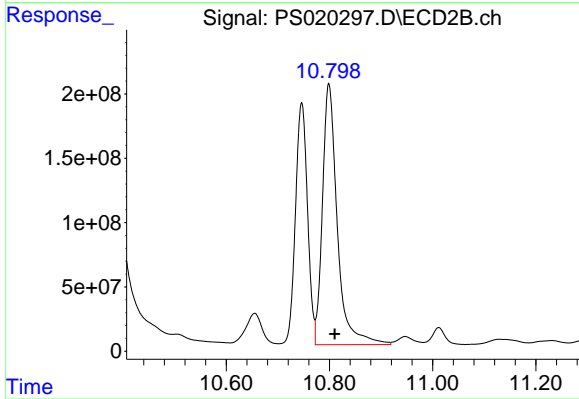
#15 Picloram

R.T.: 10.954 min
 Delta R.T.: -0.016 min
 Response: 11895372993
 Conc: 376.22 ng/ml

Instrument :
 ECD_S
 ClientSampleId :
 TT-203-IDWSO-20220811-1MS

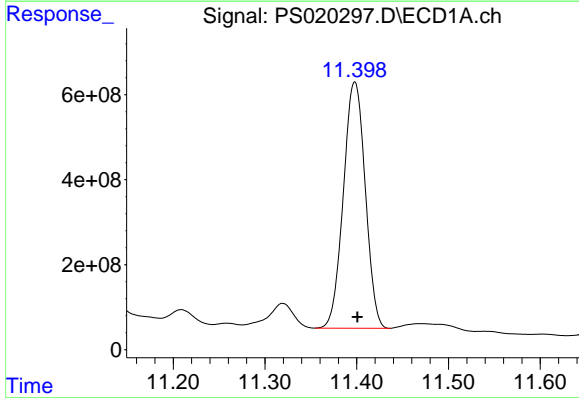
Manual Integrations
 APPROVED

Reviewed By :Yogesh Patel 08/17/2022
 Supervised By :Ankita Jodhani 08/17/2022



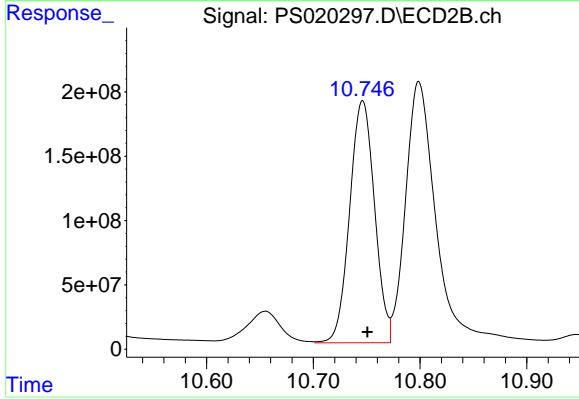
#15 Picloram

R.T.: 10.799 min
 Delta R.T.: -0.011 min
 Response: 4056154826
 Conc: 537.62 ng/ml



#16 DCPA

R.T.: 11.398 min
 Delta R.T.: -0.003 min
 Response: 9615780646
 Conc: 391.13 ng/ml



#16 DCPA

R.T.: 10.746 min
 Delta R.T.: -0.005 min
 Response: 3052228603
 Conc: 460.34 ng/ml