

Data Path : Z:\pestpcbsrv\HPCHEM1\ECD\_S\Data\PS081623\  
 Data File : PS024088.D  
 Signal(s) : Signal #1: ECD1A.ch Signal #2: ECD2B.ch  
 Acq On : 16 Aug 2023 17:27  
 Operator : AR\AJ  
 Sample : 03981-01  
 Misc :  
 ALS Vial : 6 Sample Multiplier: 1

Instrument :  
 ECD\_S  
 ClientSampleId :

Integration File signal 1: autoint1.e  
 Integration File signal 2: autoint2.e  
 Quant Time: Aug 16 22:16:59 2023  
 Quant Method : Z:\pestpcbsrv\HPCHEM1\ECD\_S\Method\PS080823.M  
 Quant Title : 8080.M  
 QLast Update : Tue Aug 08 13:26:17 2023  
 Response via : Initial Calibration  
 Integrator: ChemStation

Volume Inj. : 2 µl  
 Signal #1 Phase : Rtx-CLPesticides Signal #2 Phase: Rtx-CLPesticides2  
 Signal #1 Info : 30M x 0.32mm x0.5 Signal #2 Info : 30M x 0.32mm x 0.25µm

Compound	RT#1	RT#2	Resp#1	Resp#2	ng/ml	ng/ml
-----						
System Monitoring Compounds						
4) S 2,4-DCAA	6.366	6.797	439.8E6	141.7E6	222.068	210.601
Target Compounds						
1) T Dalapon	2.468	2.541	37953019	26631712	17.297	24.356 #
3) T 4-Nitroph...	6.194	6.391	48551876	5581698	43.866	14.102 #
5) T DICAMBA	6.514	6.949	4930706	2623741	<MDL	<MDL #
6) T MCPP	6.684	7.114f	11242953	-1043571	1.803	N.D. #
7) T MCPA	6.794	7.206f	-19271263	16683542	N.D.	5.703
8) T DICHLORPROP	7.088	7.587	73217110	23756284	32.539	32.494
9) T 2,4-D	7.258f	7.801f	82687580	2119968	33.368	2.489 #
10) T Pentachlo...	7.524	8.287	349.2E6	112.7E6	11.139	10.484
12) T 2,4,5-T	8.320	9.008	11331908	4975379	1.011	1.317 #
13) T 2,4-DB	8.821	9.522	92353068	13219268	51.895	29.000 #
14) T DINOSEB	9.895	9.857	-9614384	18131941	N.D.	6.046
15) T Picloram	9.688	10.804	-8627211	69024442	N.D.	13.852
16) T DCPA	10.128	10.804	28895799	69024442	1.837	13.426 #
-----						

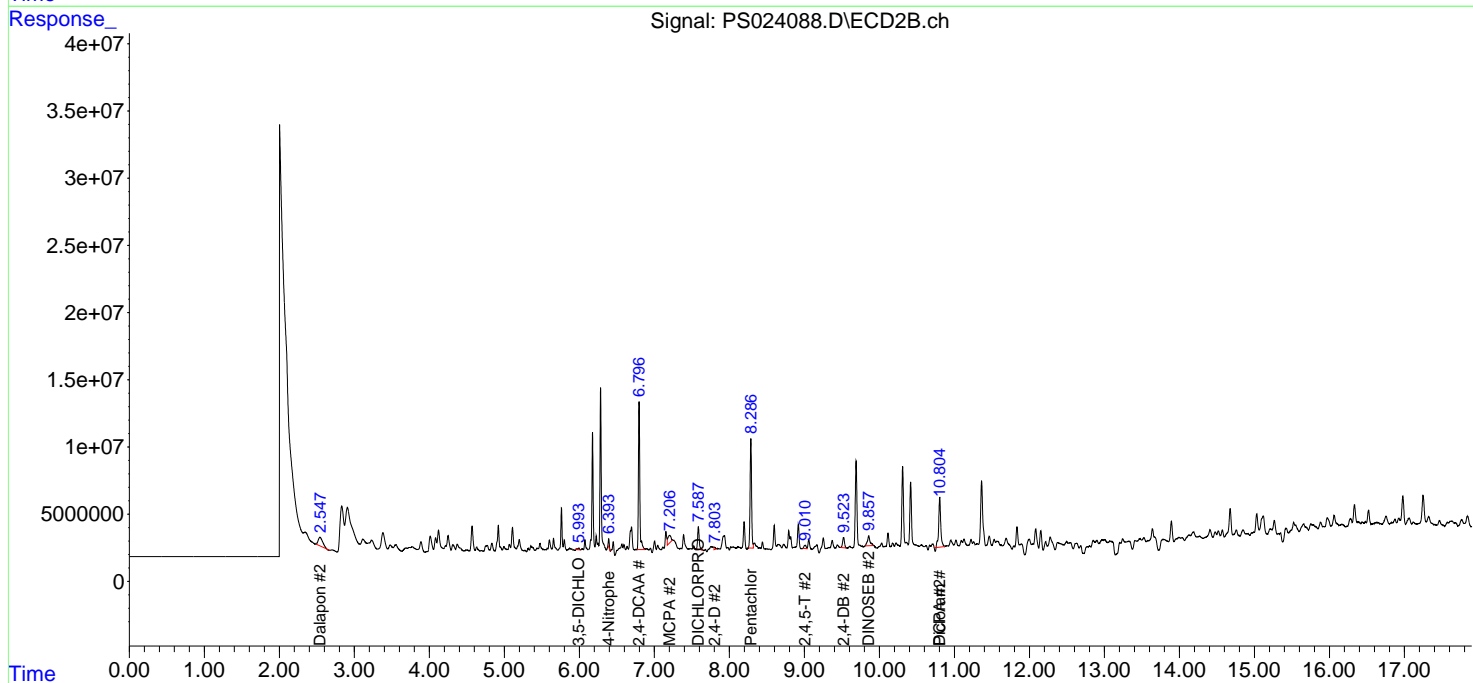
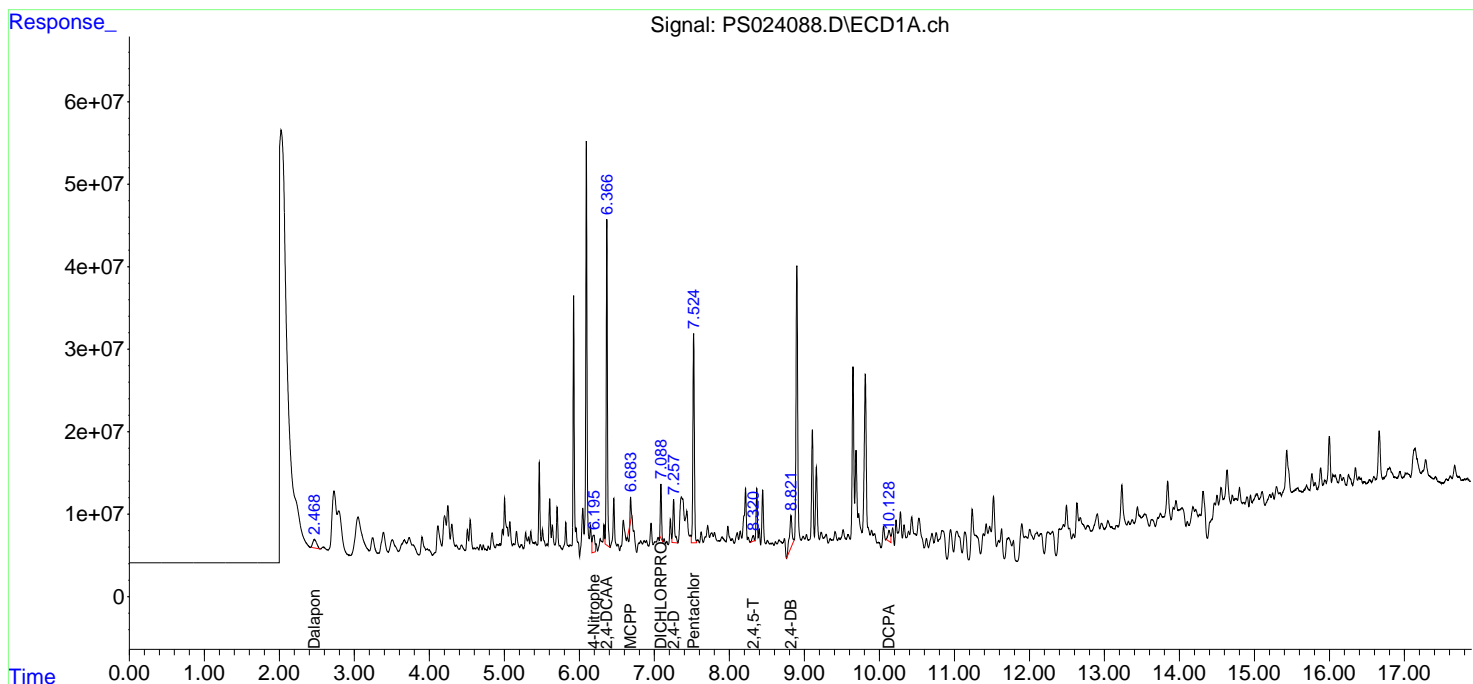
(f)=RT Delta > 1/2 Window (#)=Amounts differ by > 25% (m)=manual int.

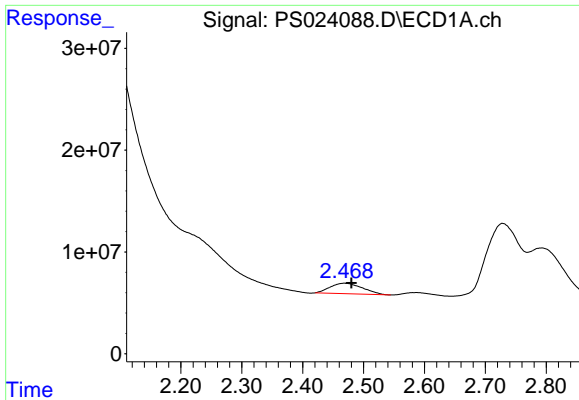
Data Path : Z:\pestpcbsrv\HPCHEM1\ECD\_S\Data\PS081623\  
 Data File : PS024088.D  
 Signal(s) : Signal #1: ECD1A.ch Signal #2: ECD2B.ch  
 Acq On : 16 Aug 2023 17:27  
 Operator : AR\AJ  
 Sample : 03981-01  
 Misc :  
 ALS Vial : 6 Sample Multiplier: 1

Instrument :  
 ECD\_S  
 ClientSampleId :

Integration File signal 1: autoint1.e  
 Integration File signal 2: autoint2.e  
 Quant Time: Aug 16 22:16:59 2023  
 Quant Method : Z:\pestpcbsrv\HPCHEM1\ECD\_S\Method\PS080823.M  
 Quant Title : 8080.M  
 QLast Update : Tue Aug 08 13:26:17 2023  
 Response via : Initial Calibration  
 Integrator: ChemStation

Volume Inj. : 2 µl  
 Signal #1 Phase : Rtx-CLPesticides Signal #2 Phase: Rtx-CLPesticides2  
 Signal #1 Info : 30M x 0.32mm x0.5 Signal #2 Info : 30M x 0.32mm x 0.25µm

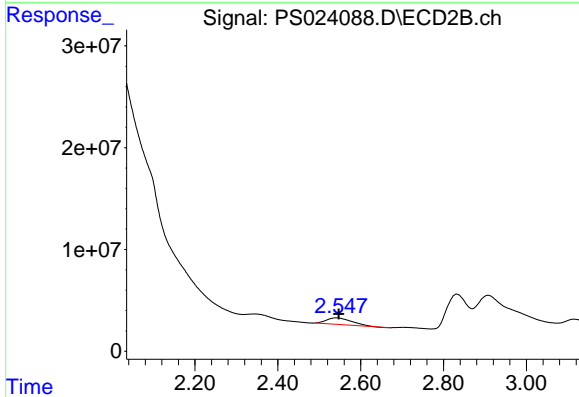




#1 Dalapon

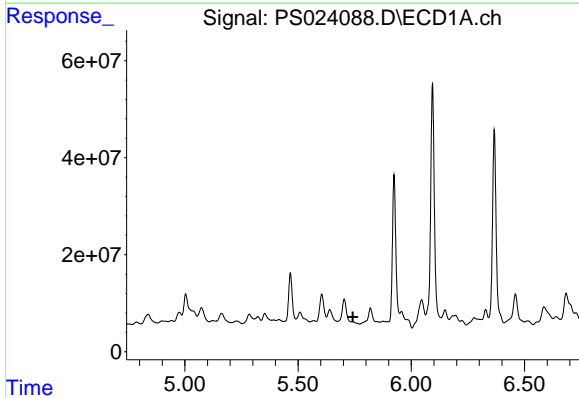
R.T.: 2.468 min  
 Delta R.T.: -0.012 min  
 Response: 37953019  
 Conc: 17.30 ng/ml

Instrument :  
 ECD\_S  
 ClientSampleId :



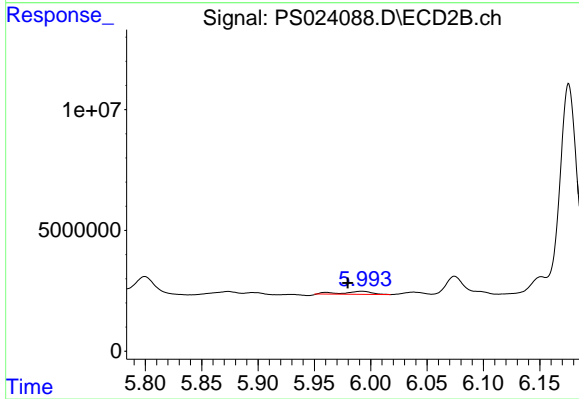
#1 Dalapon

R.T.: 2.541 min  
 Delta R.T.: -0.006 min  
 Response: 26631712  
 Conc: 24.36 ng/ml



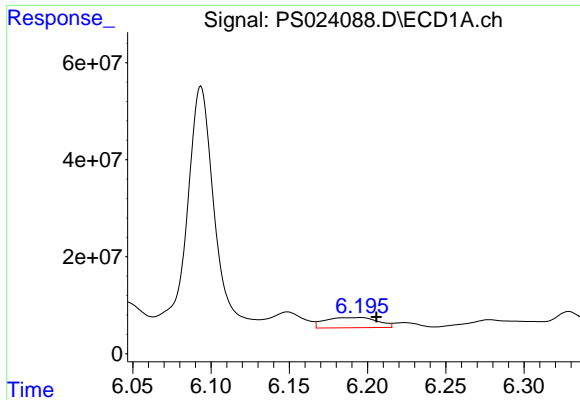
#2 3,5-DICHLOROBENZOIC ACID

R.T.: 5.704 min  
 Delta R.T.: -0.038 min  
 Response: -22945136  
 Conc: N.D.



#2 3,5-DICHLOROBENZOIC ACID

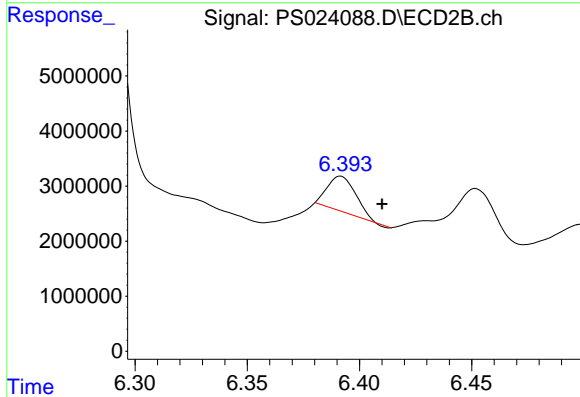
R.T.: 5.992 min  
 Delta R.T.: 0.012 min  
 Response: 1900983  
 Conc: 1.81 ng/ml



#3 4-Nitrophenol

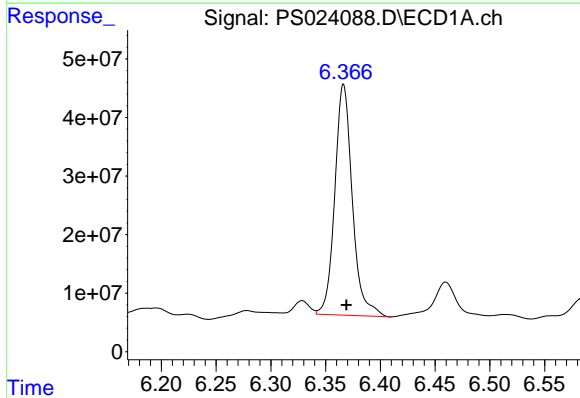
R.T.: 6.194 min  
 Delta R.T.: -0.012 min  
 Response: 48551876  
 Conc: 43.87 ng/ml

Instrument :  
 ECD\_S  
 ClientSampleId :



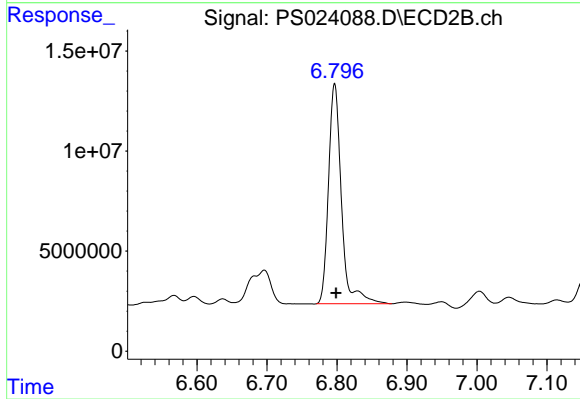
#3 4-Nitrophenol

R.T.: 6.391 min  
 Delta R.T.: -0.019 min  
 Response: 5581698  
 Conc: 14.10 ng/ml



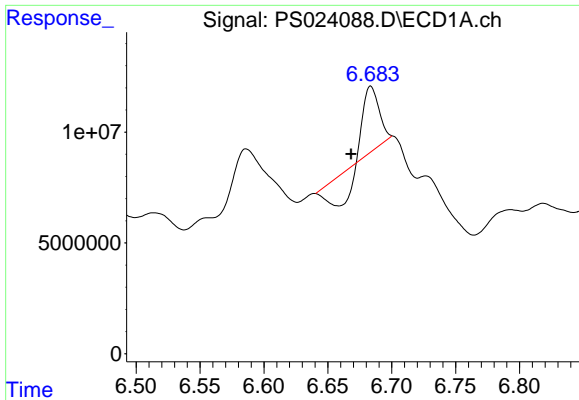
#4 2,4-DCAA

R.T.: 6.366 min  
 Delta R.T.: -0.003 min  
 Response: 439819722  
 Conc: 222.07 ng/ml



#4 2,4-DCAA

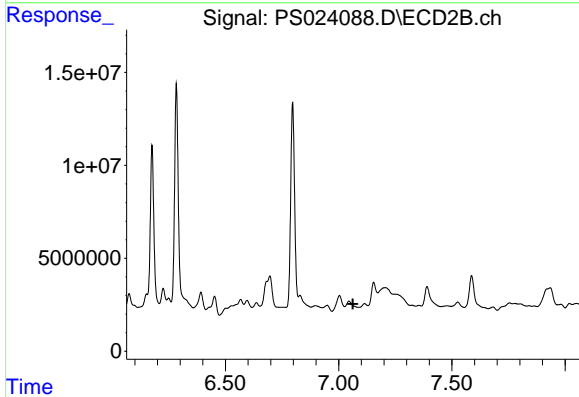
R.T.: 6.797 min  
 Delta R.T.: -0.002 min  
 Response: 141656198  
 Conc: 210.60 ng/ml



#6 MCPP

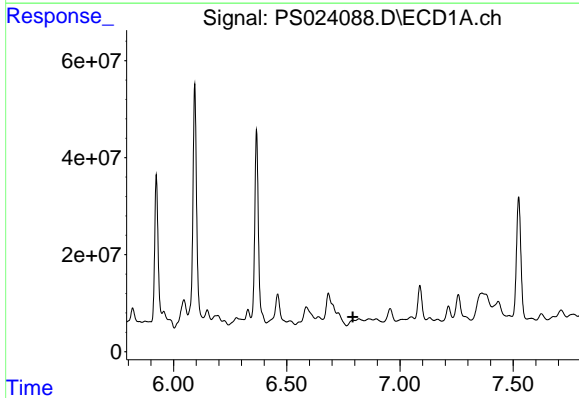
R.T.: 6.684 min  
 Delta R.T.: 0.016 min  
 Response: 11242953  
 Conc: 1.80 ug/ml

Instrument :  
 ECD\_S  
 ClientSampleId :



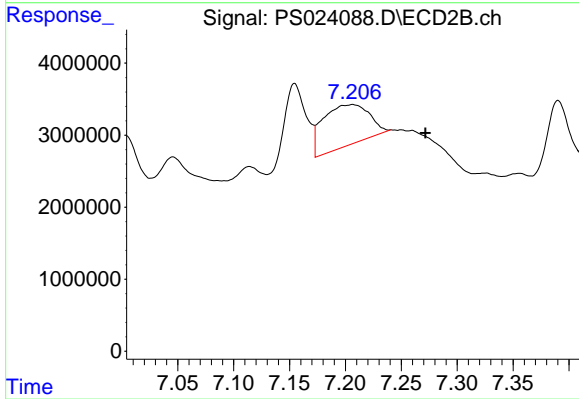
#6 MCPP

R.T.: 7.114 min  
 Delta R.T.: 0.051 min  
 Response: -1043571  
 Conc: N.D.



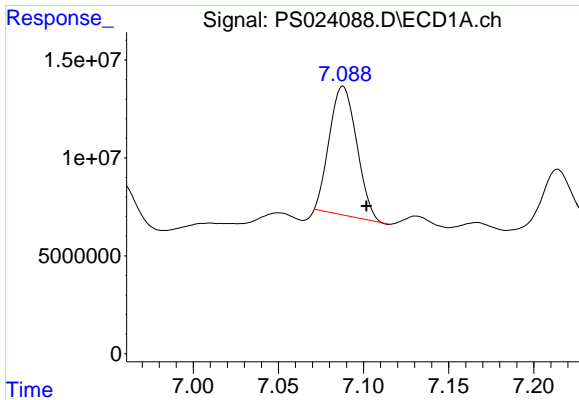
#7 MCPA

R.T.: 6.794 min  
 Delta R.T.: 0.002 min  
 Response: -19271263  
 Conc: N.D.



#7 MCPA

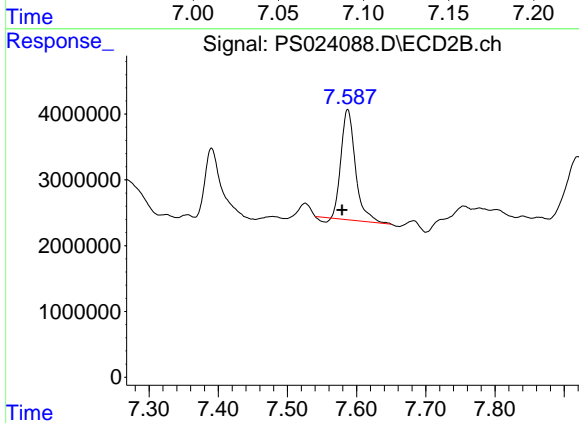
R.T.: 7.206 min  
 Delta R.T.: -0.065 min  
 Response: 16683542  
 Conc: 5.70 ug/ml



#8 DICHLORPROP

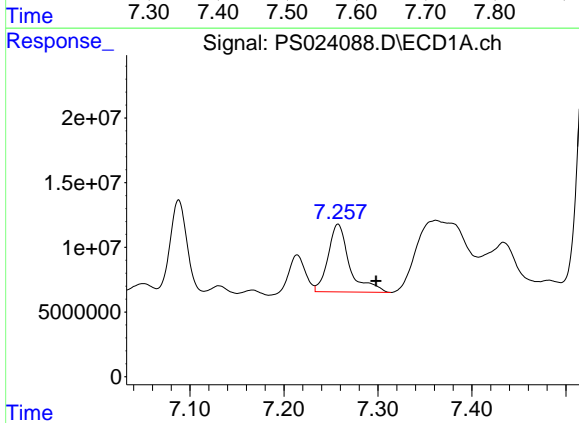
R.T.: 7.088 min  
 Delta R.T.: -0.014 min  
 Response: 73217110  
 Conc: 32.54 ng/ml

Instrument :  
 ECD\_S  
 ClientSampleId :



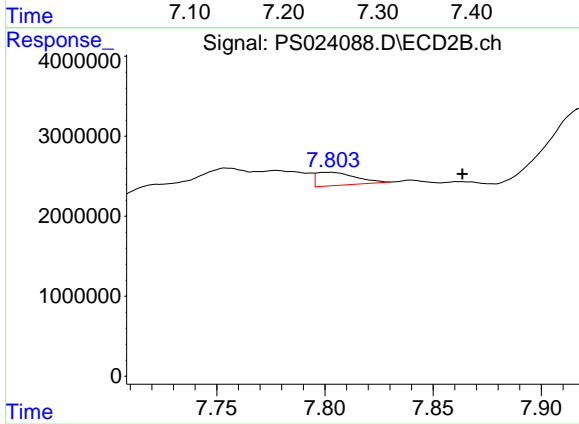
#8 DICHLORPROP

R.T.: 7.587 min  
 Delta R.T.: 0.008 min  
 Response: 23756284  
 Conc: 32.49 ng/ml



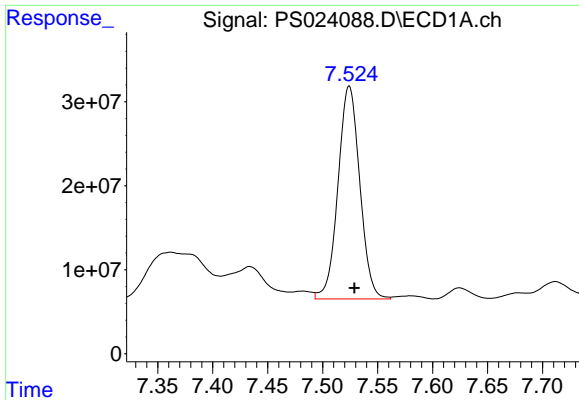
#9 2,4-D

R.T.: 7.258 min  
 Delta R.T.: -0.040 min  
 Response: 82687580  
 Conc: 33.37 ng/ml



#9 2,4-D

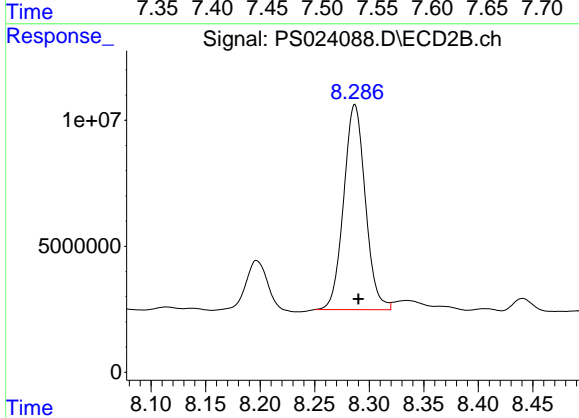
R.T.: 7.801 min  
 Delta R.T.: -0.062 min  
 Response: 2119968  
 Conc: 2.49 ng/ml



#10 Pentachlorophenol

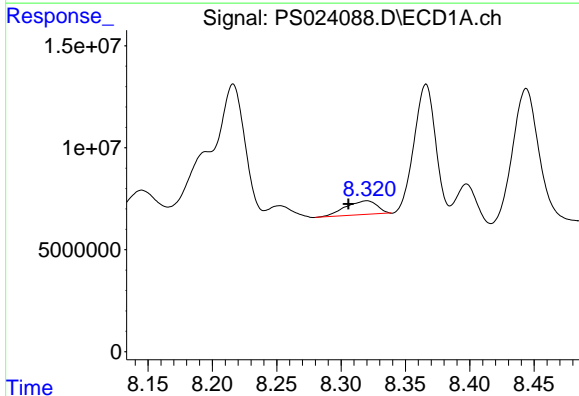
R.T.: 7.524 min  
 Delta R.T.: -0.005 min  
 Response: 349173252  
 Conc: 11.14 ng/ml

Instrument :  
 ECD\_S  
 ClientSampleId :



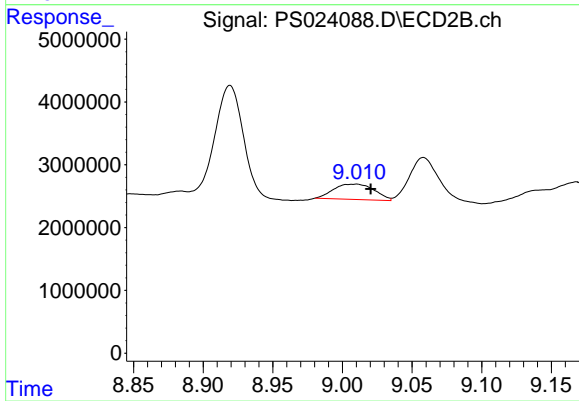
#10 Pentachlorophenol

R.T.: 8.287 min  
 Delta R.T.: -0.003 min  
 Response: 112651293  
 Conc: 10.48 ng/ml



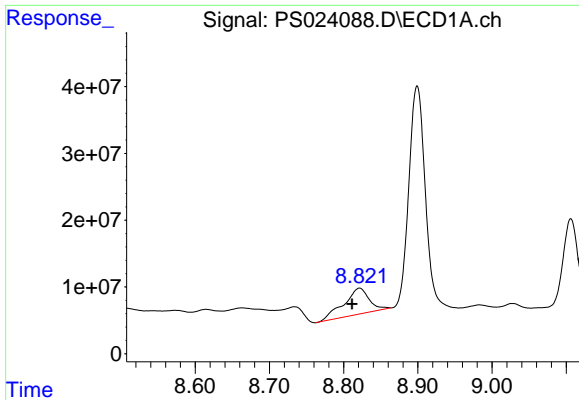
#12 2,4,5-T

R.T.: 8.320 min  
 Delta R.T.: 0.014 min  
 Response: 11331908  
 Conc: 1.01 ng/ml



#12 2,4,5-T

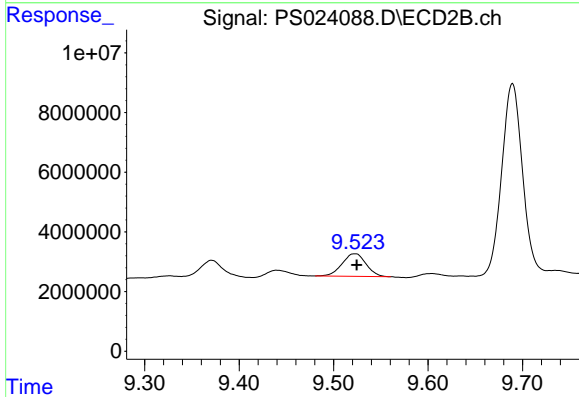
R.T.: 9.008 min  
 Delta R.T.: -0.012 min  
 Response: 4975379  
 Conc: 1.32 ng/ml



#13 2,4-DB

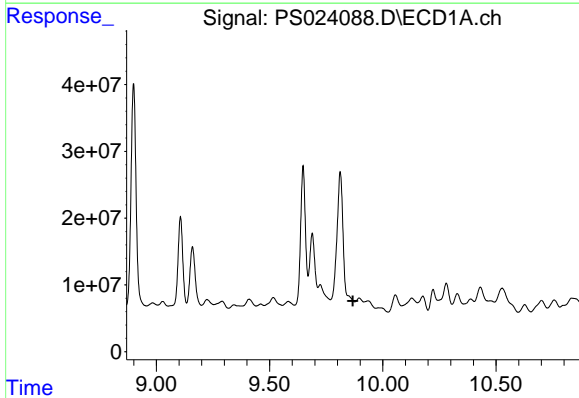
R.T.: 8.821 min  
 Delta R.T.: 0.010 min  
 Response: 92353068  
 Conc: 51.90 ng/ml

Instrument :  
 ECD\_S  
 ClientSampleId :



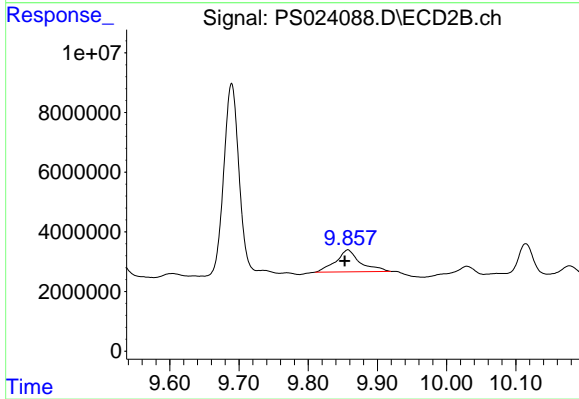
#13 2,4-DB

R.T.: 9.522 min  
 Delta R.T.: -0.002 min  
 Response: 13219268  
 Conc: 29.00 ng/ml



#14 DINOSEB

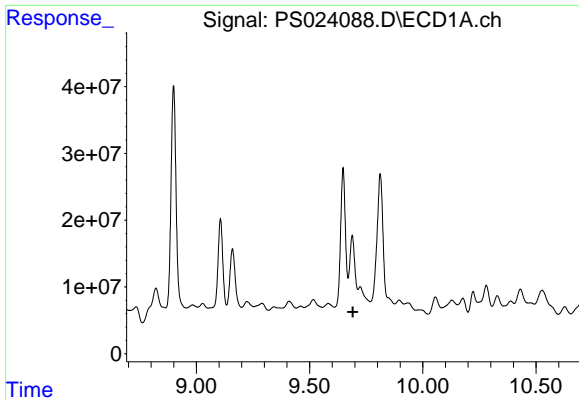
R.T.: 9.895 min  
 Delta R.T.: 0.028 min  
 Response: -9614384  
 Conc: N.D.



#14 DINOSEB

R.T.: 9.857 min  
 Delta R.T.: 0.004 min  
 Response: 18131941  
 Conc: 6.05 ng/ml

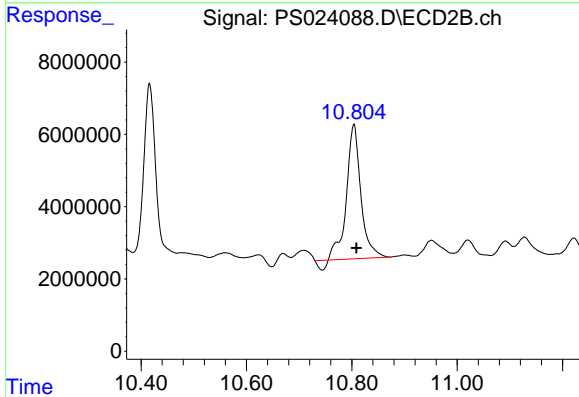




#15 Picloram

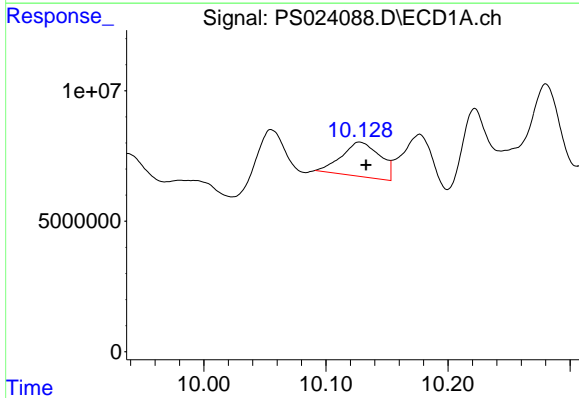
R.T.: 9.688 min  
 Delta R.T.: -0.003 min  
 Response: -8627211  
 Conc: N.D.

Instrument :  
 ECD\_S  
 ClientSampleId :



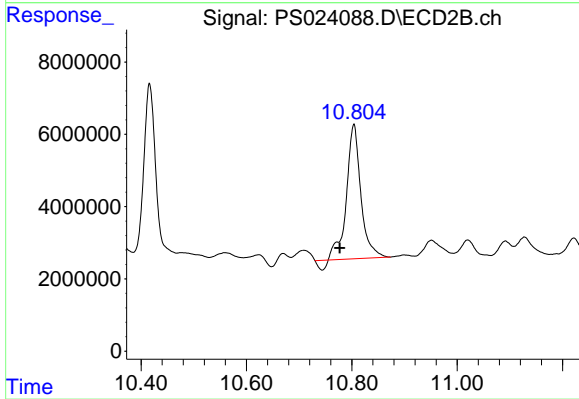
#15 Picloram

R.T.: 10.804 min  
 Delta R.T.: -0.005 min  
 Response: 69024442  
 Conc: 13.85 ng/ml



#16 DCPA

R.T.: 10.128 min  
 Delta R.T.: -0.005 min  
 Response: 28895799  
 Conc: 1.84 ng/ml



#16 DCPA

R.T.: 10.804 min  
 Delta R.T.: 0.027 min  
 Response: 69024442  
 Conc: 13.43 ng/ml