

Data Path : Z:\pestpcbsrv\HPCHEM1\ECD\_S\Data\PS081623\  
 Data File : PS024091.D  
 Signal(s) : Signal #1: ECD1A.ch Signal #2: ECD2B.ch  
 Acq On : 16 Aug 2023 18:40  
 Operator : AR\AJ  
 Sample : 04006-01  
 Misc :  
 ALS Vial : 9 Sample Multiplier: 1

Instrument :  
 ECD\_S  
 ClientSampleId :

Integration File signal 1: autoint1.e  
 Integration File signal 2: autoint2.e  
 Quant Time: Aug 16 22:18:47 2023  
 Quant Method : Z:\pestpcbsrv\HPCHEM1\ECD\_S\Method\PS080823.M  
 Quant Title : 8080.M  
 QLast Update : Tue Aug 08 13:26:17 2023  
 Response via : Initial Calibration  
 Integrator: ChemStation

Volume Inj. : 2 µl  
 Signal #1 Phase : Rtx-CLPesticides Signal #2 Phase: Rtx-CLPesticides2  
 Signal #1 Info : 30M x 0.32mm x0.5 Signal #2 Info : 30M x 0.32mm x 0.25µm

	Compound	RT#1	RT#2	Resp#1	Resp#2	ng/ml	ng/ml
-----							
System Monitoring Compounds							
4) S	2,4-DCAA	6.366	6.797	614.8E6	159.9E6	310.430	237.737
Target Compounds							
2) T	3,5-DICHL...	5.735	5.989	3753902	27437	1.238	<MDL #
3) T	4-Nitroph...	6.183	6.433	40522006	6645988	36.611	16.791 #
5) T	DICAMBA	6.531	6.997	6941103	-1788748	<MDL	N.D. #
6) T	MCPD	6.683	7.113f	37733699	-2653666	6.050	N.D. #
7) T	MCPA	6.787	7.261	13508353	4970184	1.608	1.699
8) T	DICHLORPROP	7.100	7.587	569388	12900630	<MDL	17.646 #
9) T	2,4-D	7.257f	7.889	172.3E6	2197677	69.516	2.580 #
10) T	Pentachlo...	7.525	8.280	11471183	3484420	<MDL	<MDL #
12) T	2,4,5-T	8.318	9.001	62515481	3455827	5.580	<MDL #
13) T	2,4-DB	8.824	9.526	88608161	5330304	49.791	11.694 #
14) T	DINOSEB	9.812f	9.839	401.8E6	5802502	43.350	1.935 #
15) T	Picloram	0.000	10.803	0	25347570	N.D.	5.087
16) T	DCPA	10.126	10.803	26741195	25347570	1.700	4.930 #

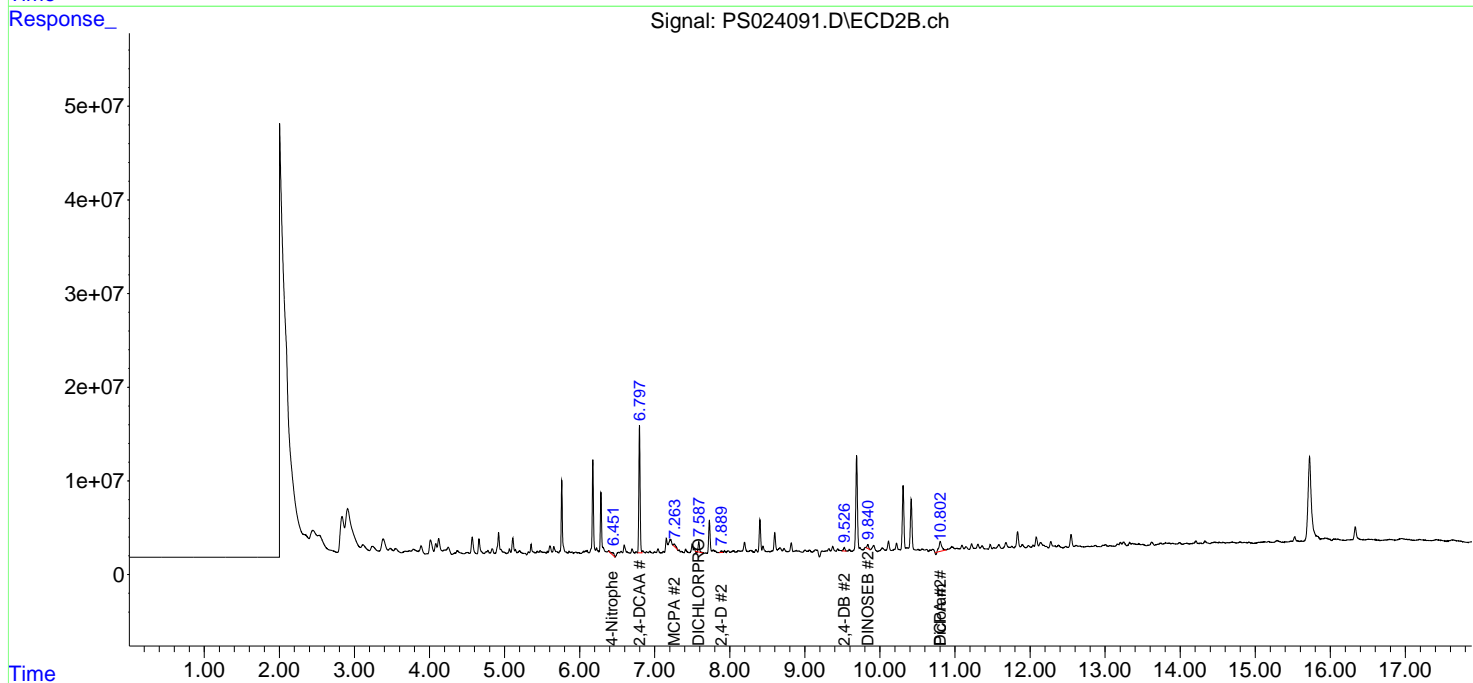
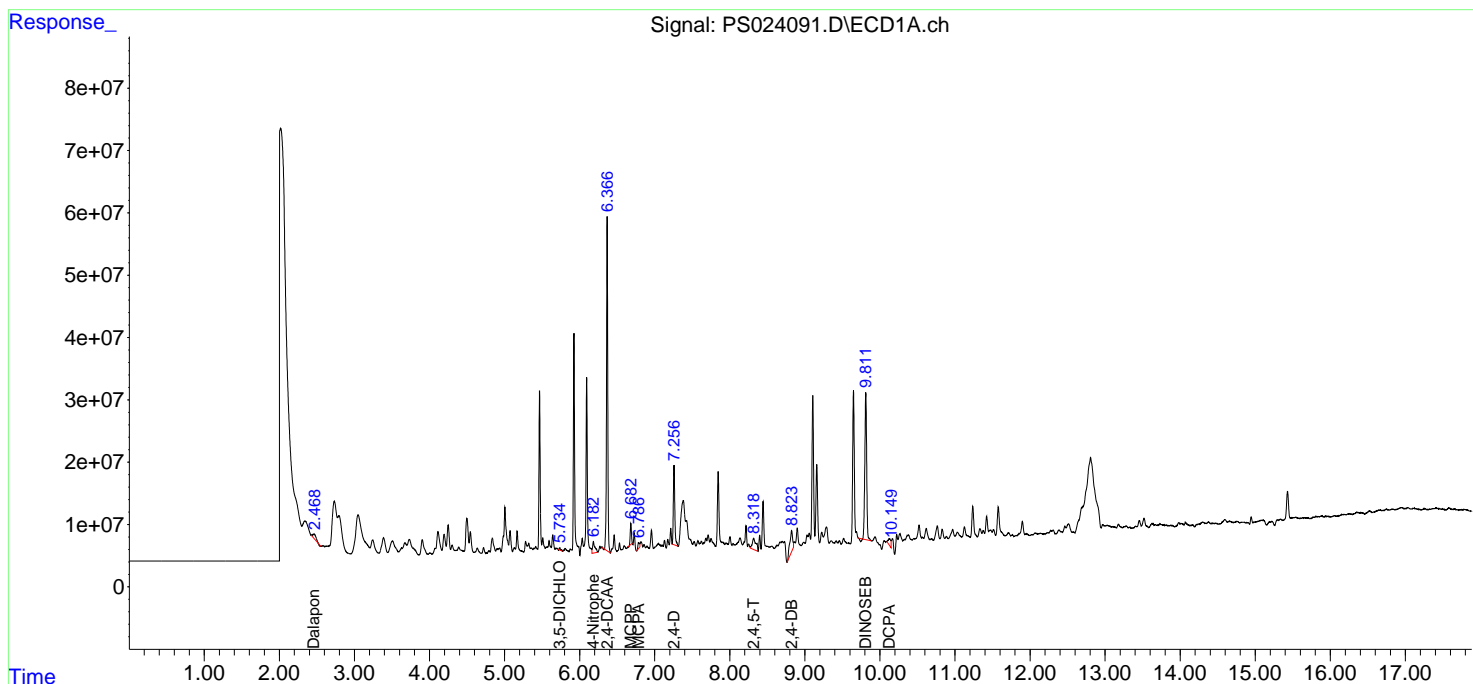
(f)=RT Delta > 1/2 Window (#)=Amounts differ by > 25% (m)=manual int.

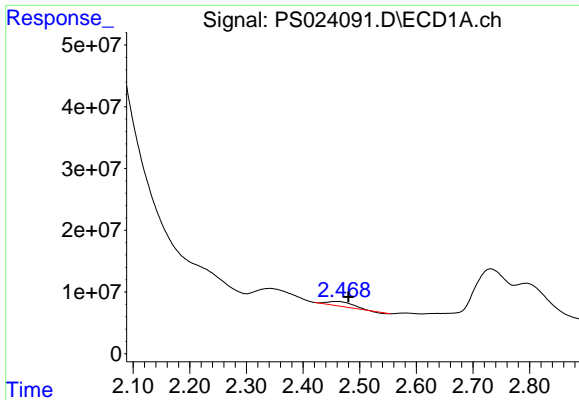
Data Path : Z:\pestpcbsrv\HPCHEM1\ECD\_S\Data\PS081623\  
 Data File : PS024091.D  
 Signal(s) : Signal #1: ECD1A.ch Signal #2: ECD2B.ch  
 Acq On : 16 Aug 2023 18:40  
 Operator : AR\AJ  
 Sample : 04006-01  
 Misc :  
 ALS Vial : 9 Sample Multiplier: 1

Instrument :  
 ECD\_S  
 ClientSampleId :

Integration File signal 1: autoint1.e  
 Integration File signal 2: autoint2.e  
 Quant Time: Aug 16 22:18:47 2023  
 Quant Method : Z:\pestpcbsrv\HPCHEM1\ECD\_S\Method\PS080823.M  
 Quant Title : 8080.M  
 QLast Update : Tue Aug 08 13:26:17 2023  
 Response via : Initial Calibration  
 Integrator: ChemStation

Volume Inj. : 2 µl  
 Signal #1 Phase : Rtx-CLPesticides Signal #2 Phase: Rtx-CLPesticides2  
 Signal #1 Info : 30M x 0.32mm x0.5 Signal #2 Info : 30M x 0.32mm x 0.25µm

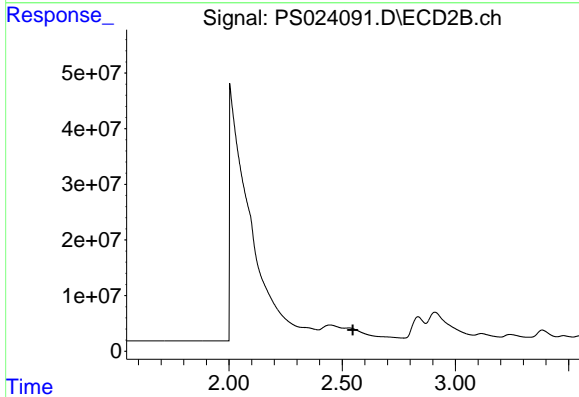




#1 Dalapon

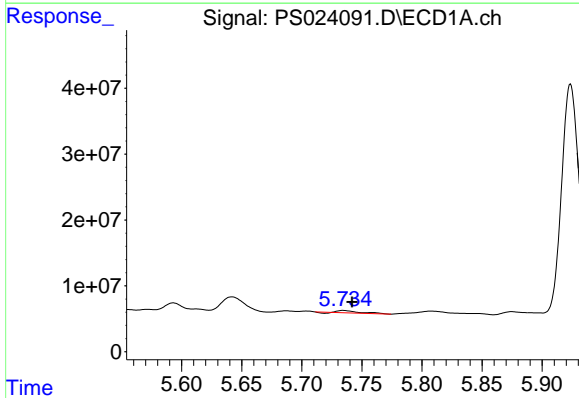
R.T.: 2.458 min  
 Delta R.T.: -0.022 min  
 Response: 21237730  
 Conc: 9.68 ng/ml

Instrument :  
 ECD\_S  
 ClientSampleId :



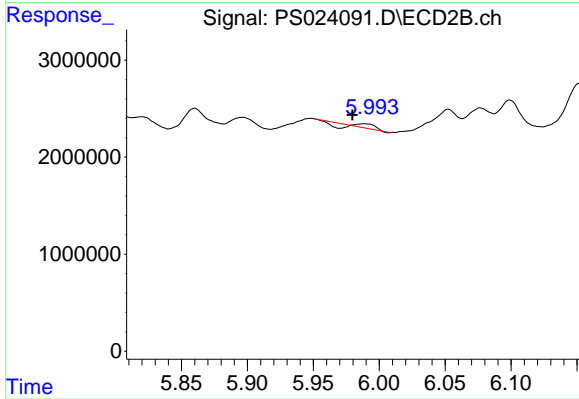
#1 Dalapon

R.T.: 2.531 min  
 Delta R.T.: -0.016 min  
 Response: -28631263  
 Conc: N.D.



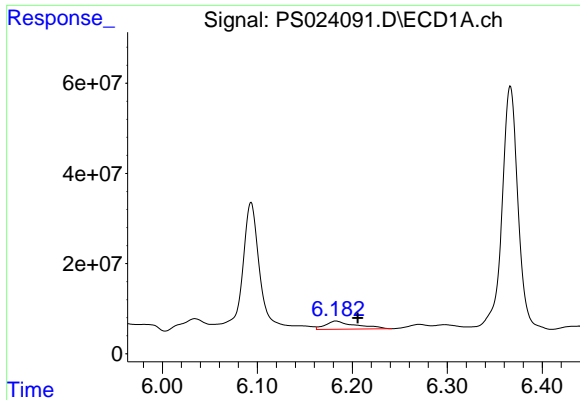
#2 3,5-DICHLOROBENZOIC ACID

R.T.: 5.735 min  
 Delta R.T.: -0.007 min  
 Response: 3753902  
 Conc: 1.24 ng/ml



#2 3,5-DICHLOROBENZOIC ACID

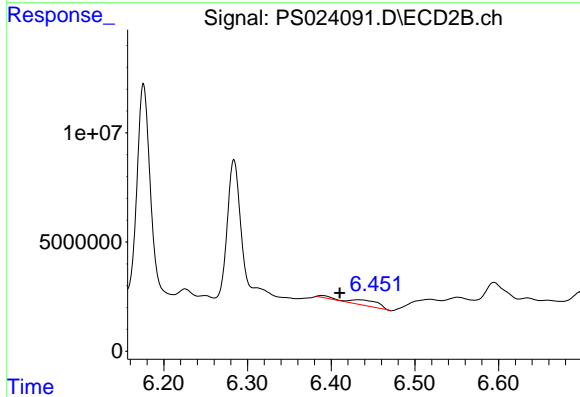
R.T.: 5.989 min  
 Delta R.T.: 0.009 min  
 Response: 27437  
 Conc: N.D.



#3 4-Nitrophenol

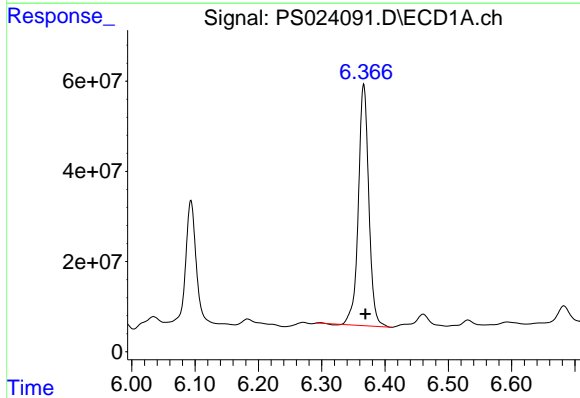
R.T.: 6.183 min  
 Delta R.T.: -0.023 min  
 Response: 40522006  
 Conc: 36.61 ng/ml

Instrument :  
 ECD\_S  
 ClientSampleId :



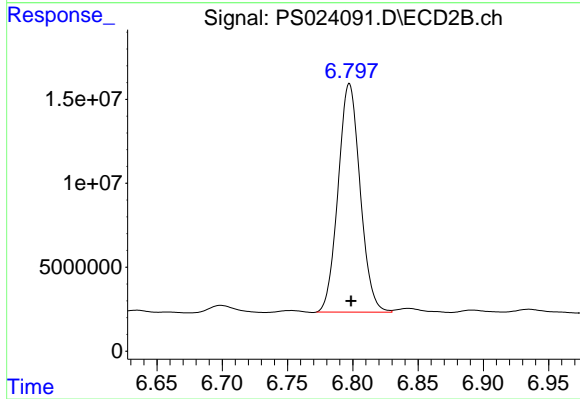
#3 4-Nitrophenol

R.T.: 6.433 min  
 Delta R.T.: 0.023 min  
 Response: 6645988  
 Conc: 16.79 ng/ml



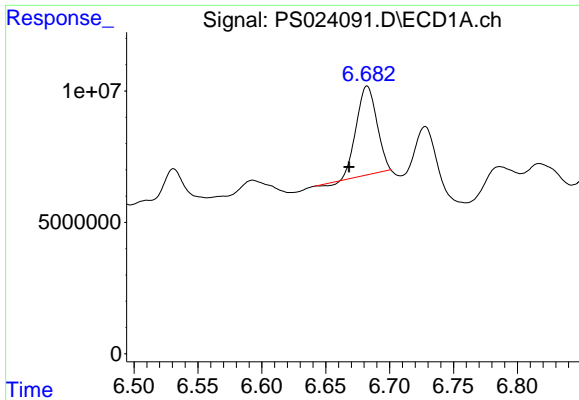
#4 2,4-DCAA

R.T.: 6.366 min  
 Delta R.T.: -0.003 min  
 Response: 614826265  
 Conc: 310.43 ng/ml



#4 2,4-DCAA

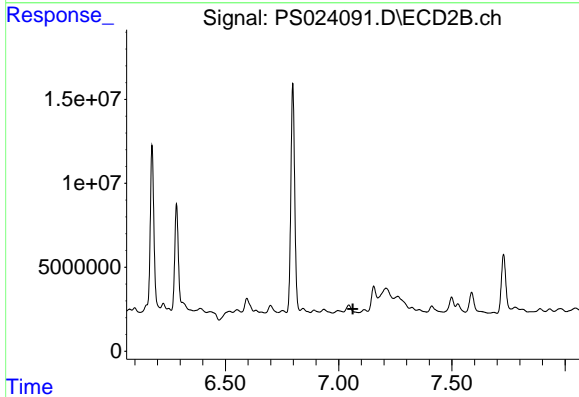
R.T.: 6.797 min  
 Delta R.T.: -0.001 min  
 Response: 159908153  
 Conc: 237.74 ng/ml



#6 MCPP

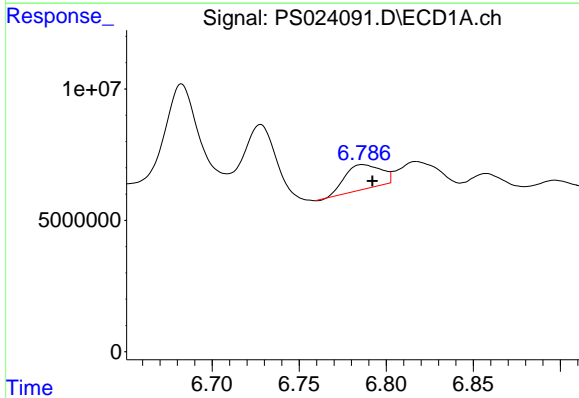
R.T.: 6.683 min  
 Delta R.T.: 0.014 min  
 Response: 37733699  
 Conc: 6.05 ug/ml

Instrument :  
 ECD\_S  
 ClientSampleId :



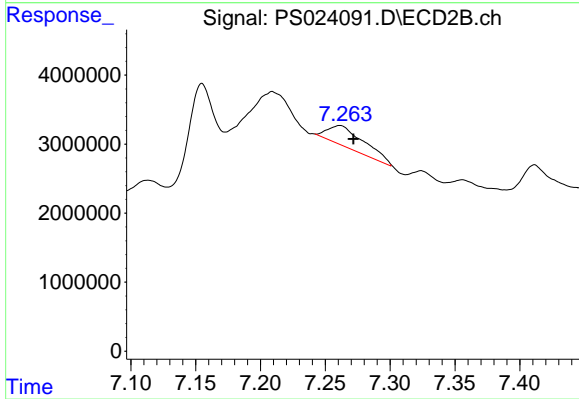
#6 MCPP

R.T.: 7.113 min  
 Delta R.T.: 0.050 min  
 Response: -2653666  
 Conc: N.D.



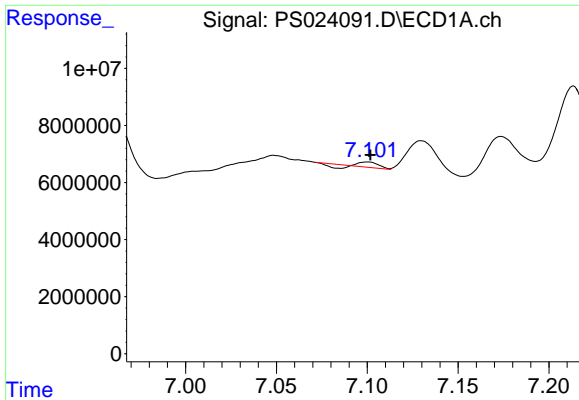
#7 MCPA

R.T.: 6.787 min  
 Delta R.T.: -0.005 min  
 Response: 13508353  
 Conc: 1.61 ug/ml



#7 MCPA

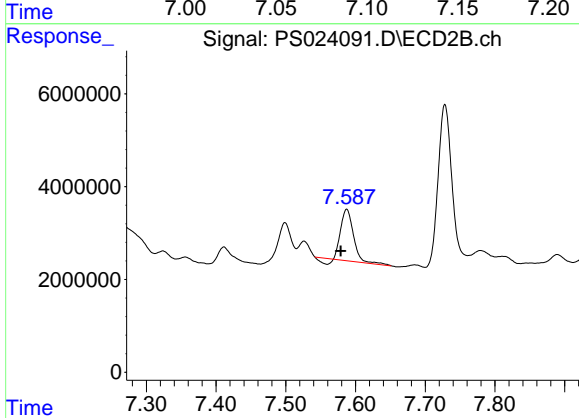
R.T.: 7.261 min  
 Delta R.T.: -0.011 min  
 Response: 4970184  
 Conc: 1.70 ug/ml



#8 DICHLORPROP

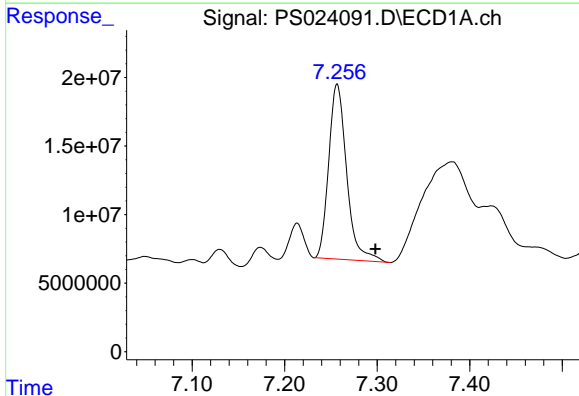
R.T.: 7.100 min  
 Delta R.T.: -0.002 min  
 Response: 569388  
 Conc: N.D.

Instrument :  
 ECD\_S  
 ClientSampleId :



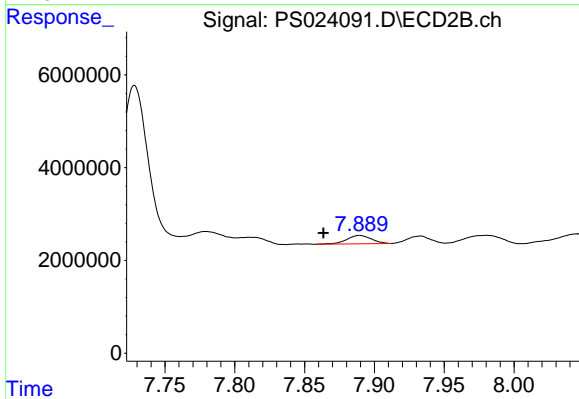
#8 DICHLORPROP

R.T.: 7.587 min  
 Delta R.T.: 0.008 min  
 Response: 12900630  
 Conc: 17.65 ng/ml



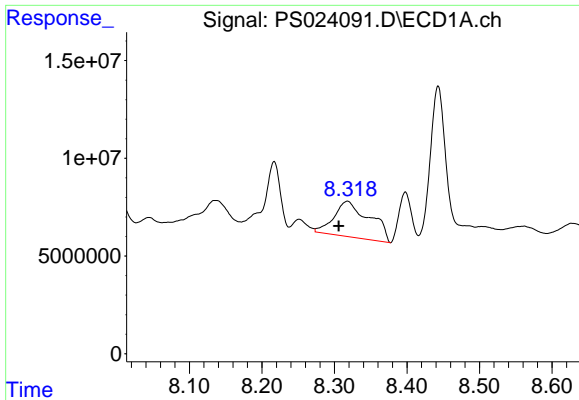
#9 2,4-D

R.T.: 7.257 min  
 Delta R.T.: -0.041 min  
 Response: 172263870  
 Conc: 69.52 ng/ml



#9 2,4-D

R.T.: 7.889 min  
 Delta R.T.: 0.026 min  
 Response: 2197677  
 Conc: 2.58 ng/ml

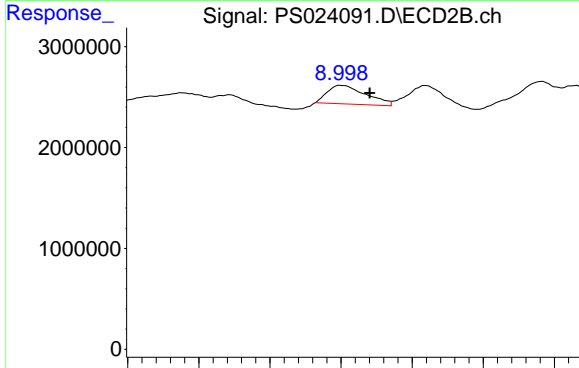


#12 2,4,5-T

R.T.: 8.318 min  
 Delta R.T.: 0.012 min  
 Response: 62515481  
 Conc: 5.58 ng/ml

Instrument :  
 ECD\_S  
 ClientSampleId :

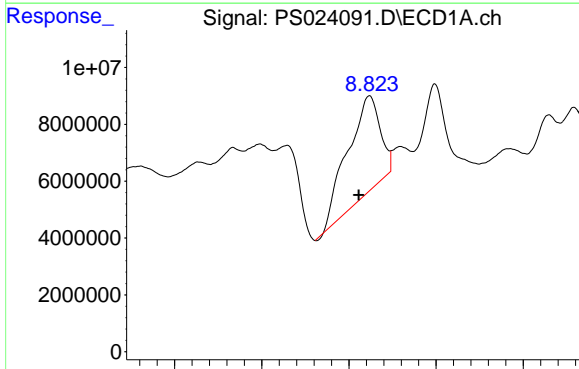
Time 8.10 8.20 8.30 8.40 8.50 8.60



#12 2,4,5-T

R.T.: 9.001 min  
 Delta R.T.: -0.020 min  
 Response: 3455827  
 Conc: N.D.

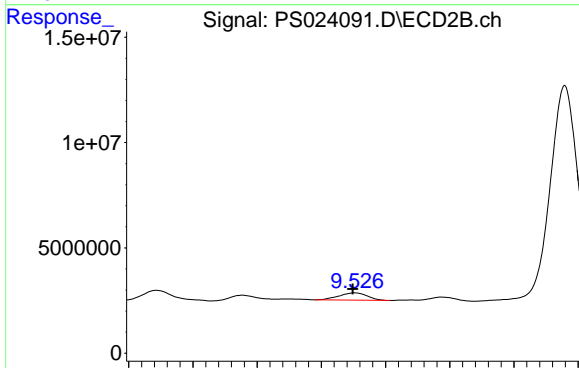
Time 8.85 8.90 8.95 9.00 9.05 9.10 9.15



#13 2,4-DB

R.T.: 8.824 min  
 Delta R.T.: 0.012 min  
 Response: 88608161  
 Conc: 49.79 ng/ml

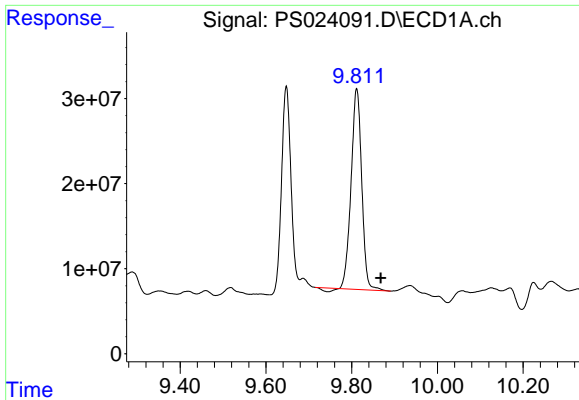
Time 8.60 8.70 8.80 8.90 9.00



#13 2,4-DB

R.T.: 9.526 min  
 Delta R.T.: 0.001 min  
 Response: 5330304  
 Conc: 11.69 ng/ml

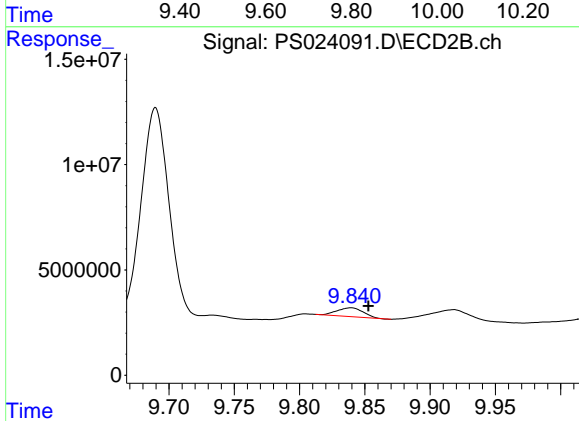
Time 9.35 9.40 9.45 9.50 9.55 9.60 9.65



#14 DINOSEB

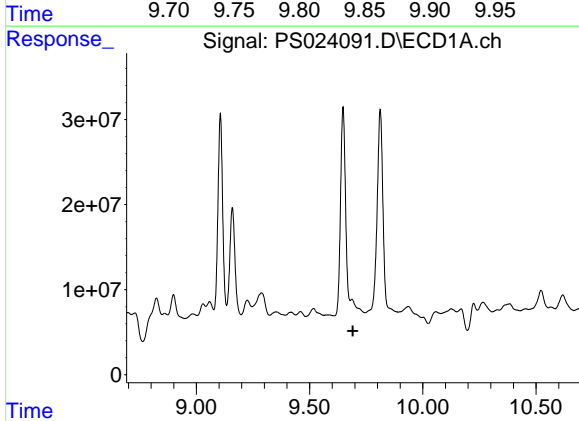
R.T.: 9.812 min  
 Delta R.T.: -0.056 min  
 Response: 401837242  
 Conc: 43.35 ng/ml

Instrument :  
 ECD\_S  
 ClientSampleId :



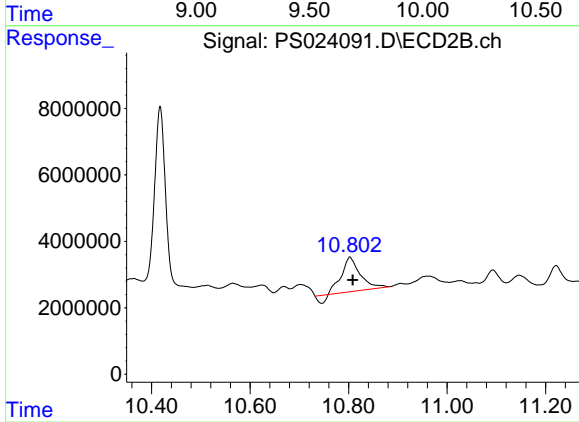
#14 DINOSEB

R.T.: 9.839 min  
 Delta R.T.: -0.014 min  
 Response: 5802502  
 Conc: 1.93 ng/ml



#15 Picloram

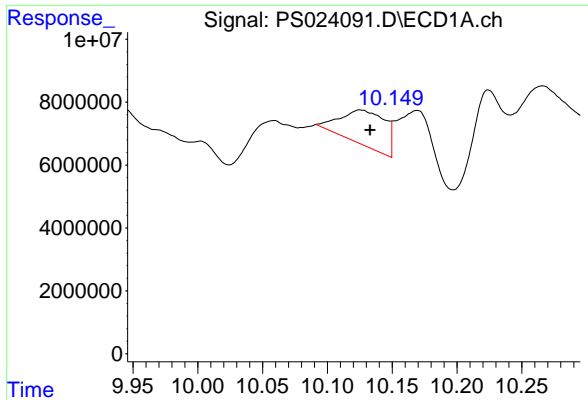
R.T.: 0.000 min  
 Exp R.T. : 9.691 min  
 Response: 0  
 Conc: N.D.



#15 Picloram

R.T.: 10.803 min  
 Delta R.T.: -0.006 min  
 Response: 25347570  
 Conc: 5.09 ng/ml

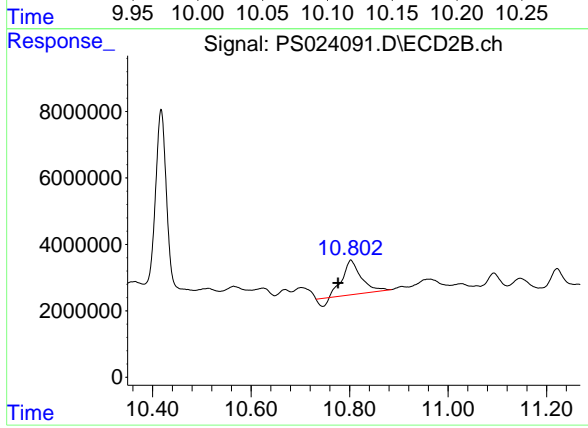




#16 DCPA

R.T.: 10.126 min  
Delta R.T.: -0.007 min  
Response: 26741195  
Conc: 1.70 ng/ml

Instrument :  
ECD\_S  
ClientSampleId :



#16 DCPA

R.T.: 10.803 min  
Delta R.T.: 0.026 min  
Response: 25347570  
Conc: 4.93 ng/ml