

Data Path : Z:\pestpcbsrv\HPCHEM1\ECD\_S\Data\PS081721\  
 Data File : PS016461.D  
 Signal(s) : Signal #1: ECD1A.ch Signal #2: ECD2B.ch  
 Acq On : 17 Aug 2021 14:16  
 Operator : DD\AJ  
 Sample : M3424-06  
 Misc :  
 ALS Vial : 10 Sample Multiplier: 1

Instrument :  
 ECD\_S  
 ClientSampleId :  
 18S

Integration File signal 1: autoint1.e  
 Integration File signal 2: autoint2.e  
 Quant Time: Aug 18 01:58:13 2021  
 Quant Method : Z:\pestpcbsrv\HPCHEM1\ECD\_S\Method\PS080221.M  
 Quant Title : 8080.M  
 QLast Update : Mon Aug 02 14:10:19 2021  
 Response via : Initial Calibration  
 Integrator: ChemStation

Volume Inj. : 2 µl  
 Signal #1 Phase : Rtx-CLPesticides Signal #2 Phase: Rtx-CLPesticides2  
 Signal #1 Info : 30M x 0.32mm x0.5 Signal #2 Info : 30M x 0.32mm x 0.25µm

Compound	RT#1	RT#2	Resp#1	Resp#2	ng/ml	ng/ml
-----						
System Monitoring Compounds						
4) S 2,4-DCAA	7.184	6.764	512.0E6	190.9E6	348.041	365.995
Target Compounds						
1) T Dalapon	2.976	2.486	40122177	76395732	19.887	109.663 #
2) T 3,5-DICHL...	6.471f	5.981	3311224	31091219	1.573	39.373 #
3) T 4-Nitroph...	0.000	6.415	0	4497846	N.D.	14.637
5) T DICAMBA	7.361	6.921	7748372	3338565	1.383	1.532
6) T MCPP	7.536	7.077f	10846874	3077547	2.563	1.781 #
7) T MCPA	7.662	7.226	206.3E6	10497339	33.487	3.851 #
8) T DICHLORPROP	8.013f	7.566	10671396	20542735	7.930	37.919 #
9) T 2,4-D	0.000	7.823	0	5510123	N.D.	8.697
10) T Pentachlo...	8.602	8.253	7588829	8081760	<MDL	1.091 #
11) T 2,4,5-TP ...	9.192	8.610	11583482	86458377	1.602	29.631 #
12) T 2,4,5-T	9.377f	9.005	67133145	3031495	8.807	1.047 #
13) T 2,4-DB	0.000	9.517	0	3257999	N.D.	8.612
14) T DINOSEB	11.111	9.878	35639077	123.6E6	6.758	60.690 #
15) T Picloram	10.945	10.819	166.6E6	12982673	16.690	3.224 #
16) T DCPA	11.417	10.764	5847765	5039632	<MDL	1.121 #

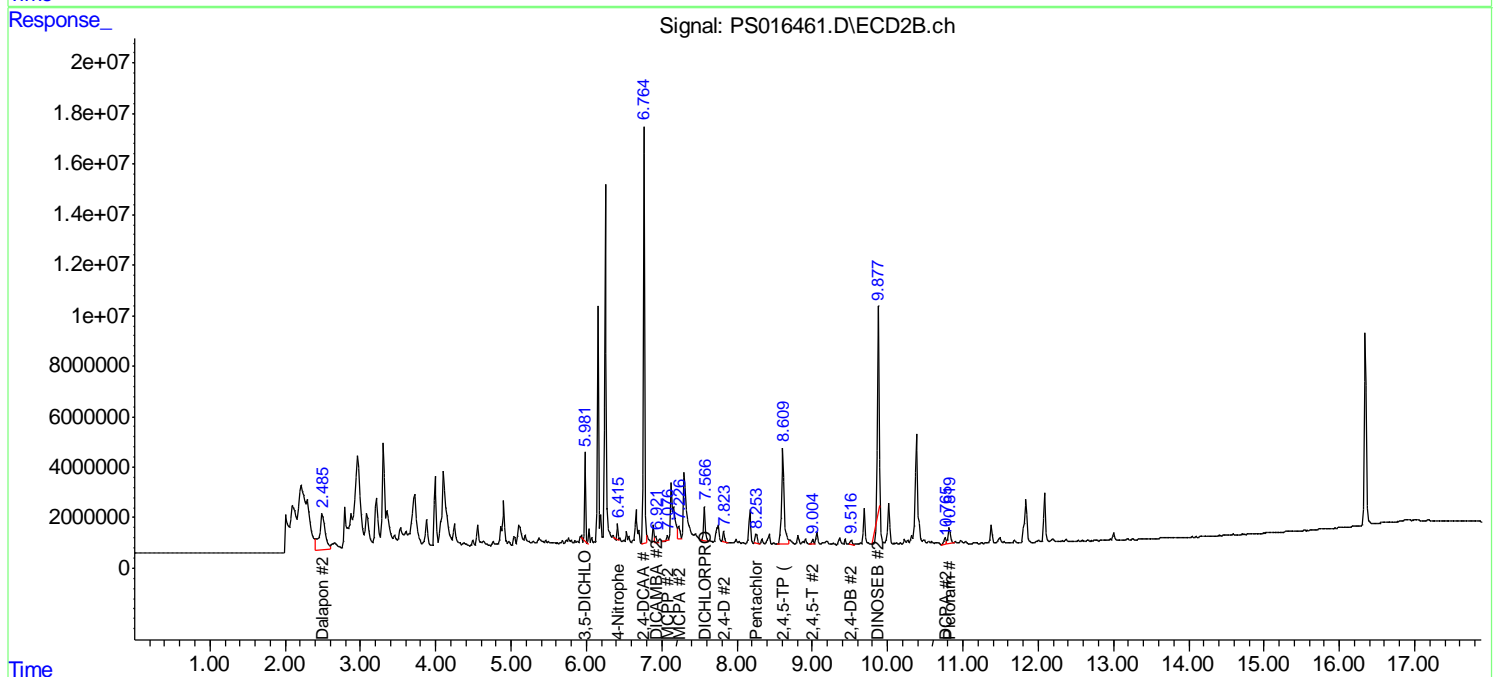
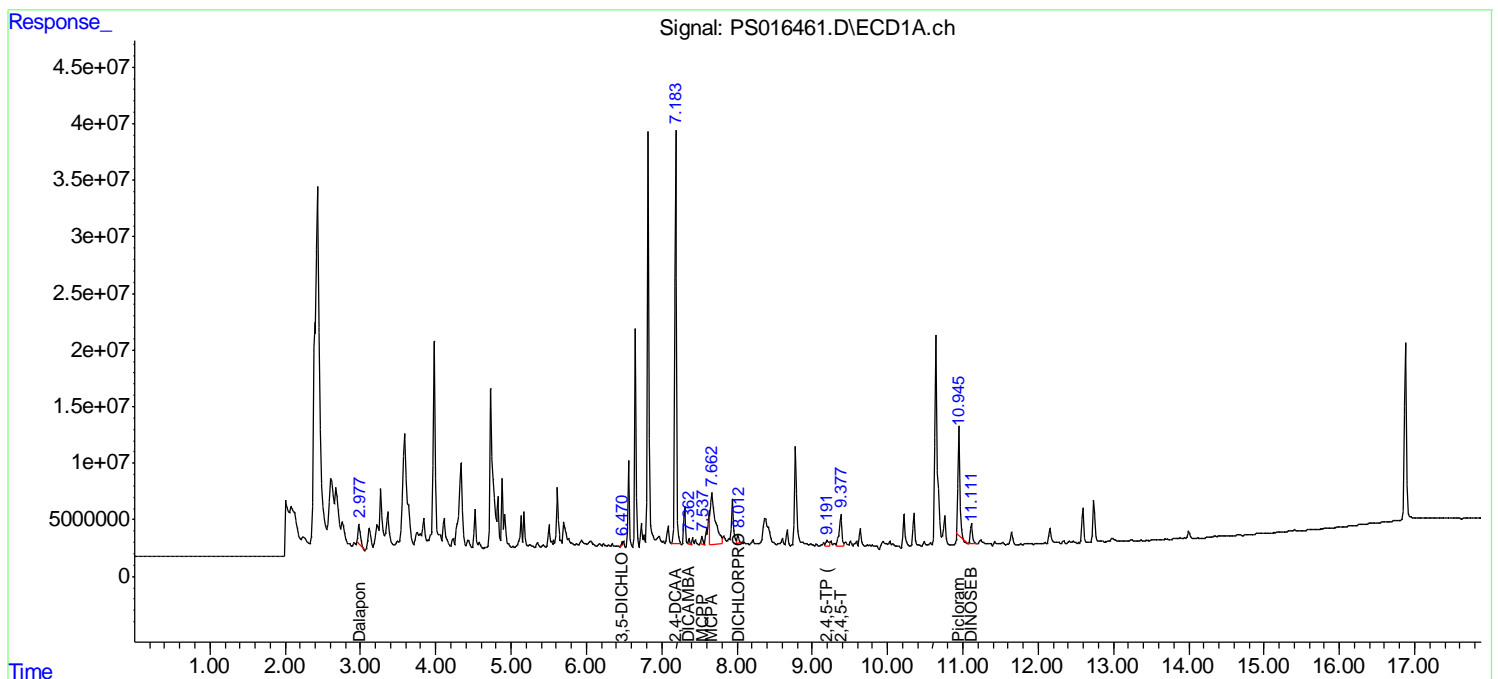
(f)=RT Delta > 1/2 Window (#)=Amounts differ by > 25% (m)=manual int.

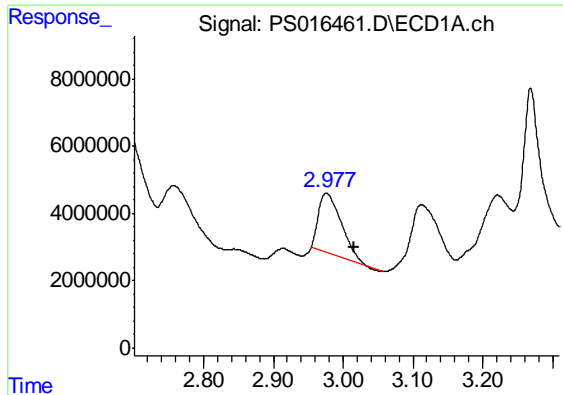
Data Path : Z:\pestpcbsrv\HPCHEM1\ECD\_S\Data\PS081721\  
 Data File : PS016461.D  
 Signal(s) : Signal #1: ECD1A.ch Signal #2: ECD2B.ch  
 Acq On : 17 Aug 2021 14:16  
 Operator : DD\AJ  
 Sample : M3424-06  
 Misc :  
 ALS Vial : 10 Sample Multiplier: 1

Instrument :  
 ECD\_S  
 Client Sampled :  
 18S

Integration File signal 1: autoint1.e  
 Integration File signal 2: autoint2.e  
 Quant Time: Aug 18 01:58:13 2021  
 Quant Method : Z:\pestpcbsrv\HPCHEM1\ECD\_S\Method\PS080221.M  
 Quant Title : 8080.M  
 QLast Update : Mon Aug 02 14:10:19 2021  
 Response via : Initial Calibration  
 Integrator: ChemStation

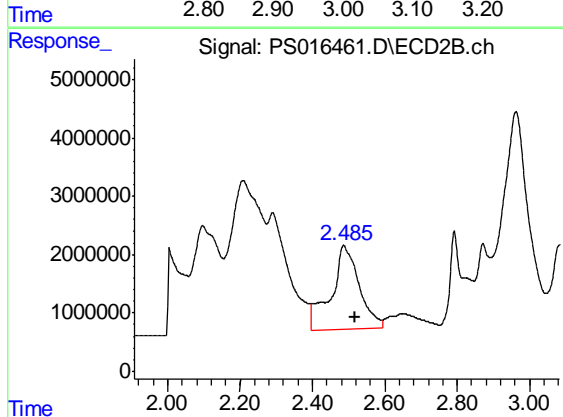
Volume Inj. : 2 µl  
 Signal #1 Phase : Rtx-CLPesticides Signal #2 Phase: Rtx-CLPesticides2  
 Signal #1 Info : 30M x 0.32mm x0.5 Signal #2 Info : 30M x 0.32mm x 0.25µm



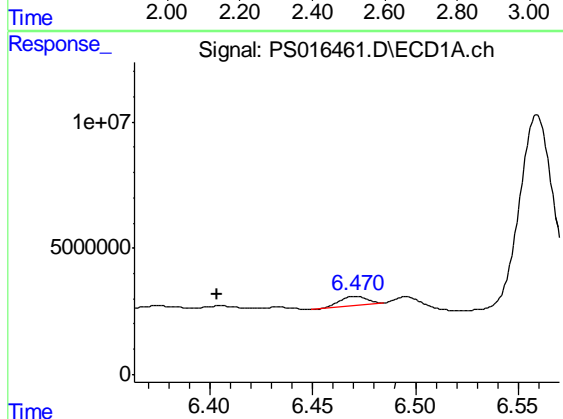


#1 Dalapon  
 R.T.: 2.976 min  
 Delta R.T.: -0.039 min  
 Response: 40122177  
 Conc: 19.89 ng/ml

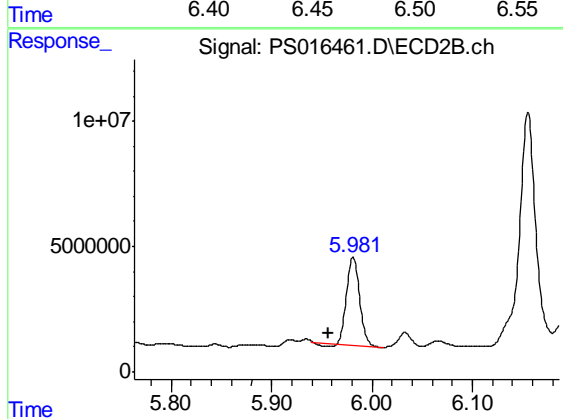
Instrument :  
 ECD\_S  
 ClientSampleId :  
 18S



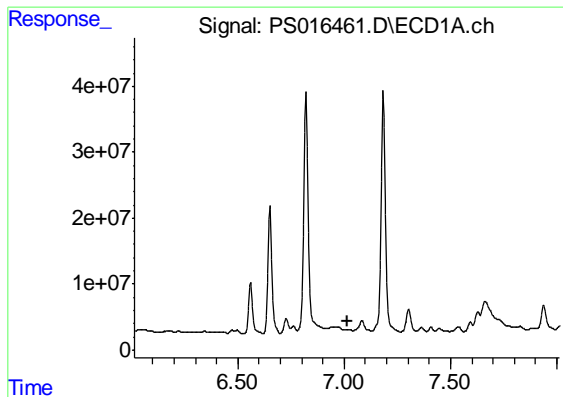
#1 Dalapon  
 R.T.: 2.486 min  
 Delta R.T.: -0.032 min  
 Response: 76395732  
 Conc: 109.66 ng/ml



#2 3,5-DICHLOROBENZOIC ACID  
 R.T.: 6.471 min  
 Delta R.T.: 0.068 min  
 Response: 3311224  
 Conc: 1.57 ng/ml



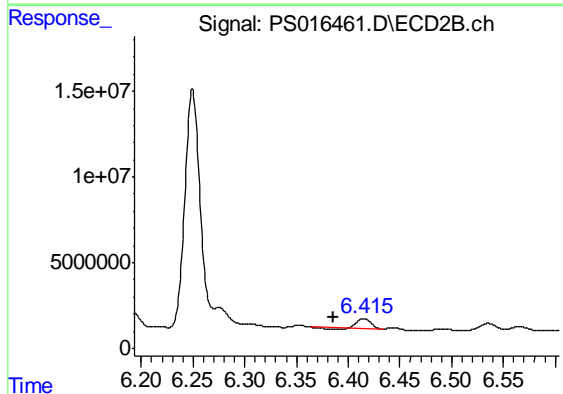
#2 3,5-DICHLOROBENZOIC ACID  
 R.T.: 5.981 min  
 Delta R.T.: 0.024 min  
 Response: 31091219  
 Conc: 39.37 ng/ml



#3 4-Nitrophenol

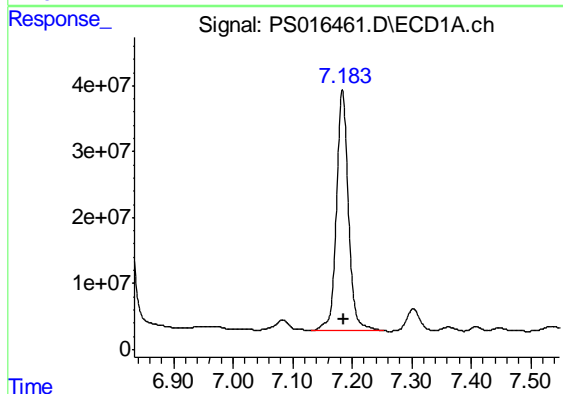
R.T.: 0.000 min  
 Exp R.T. : 7.013 min  
 Response: 0  
 Conc: N.D.

Instrument :  
 ECD\_S  
 ClientSampled :  
 18S



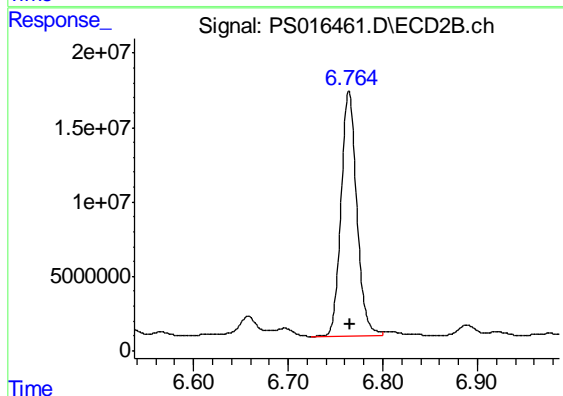
#3 4-Nitrophenol

R.T.: 6.415 min  
 Delta R.T.: 0.029 min  
 Response: 4497846  
 Conc: 14.64 ng/ml



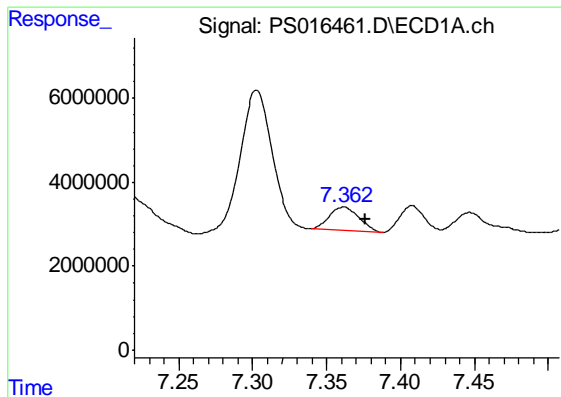
#4 2,4-DCAA

R.T.: 7.184 min  
 Delta R.T.: -0.002 min  
 Response: 512005114  
 Conc: 348.04 ng/ml



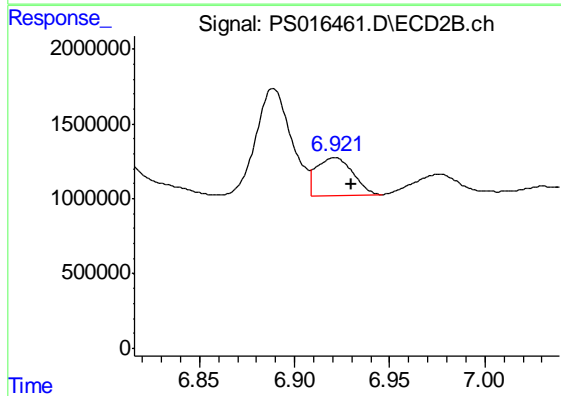
#4 2,4-DCAA

R.T.: 6.764 min  
 Delta R.T.: -0.002 min  
 Response: 190911940  
 Conc: 365.99 ng/ml

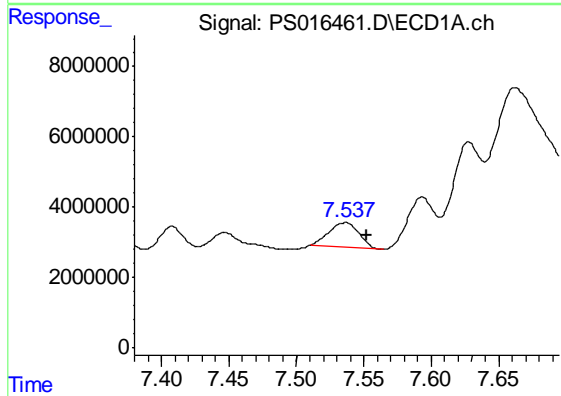


#5 DICAMBA  
 R.T.: 7.361 min  
 Delta R.T.: -0.015 min  
 Response: 7748372  
 Conc: 1.38 ng/ml

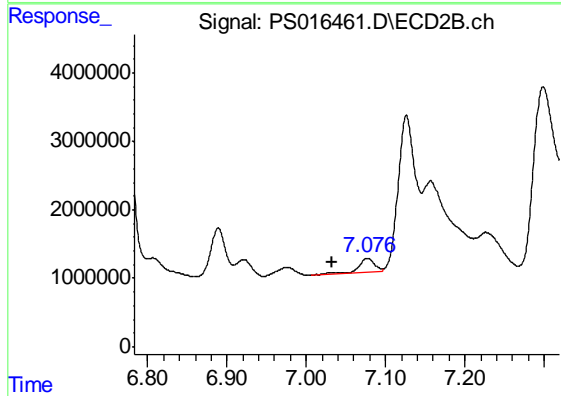
Instrument :  
 ECD\_S  
 ClientSampled :  
 18S



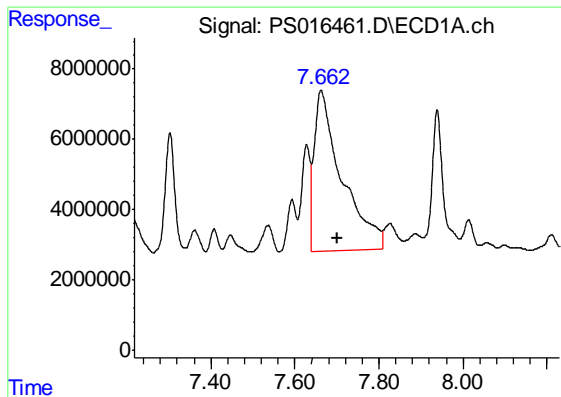
#5 DICAMBA  
 R.T.: 6.921 min  
 Delta R.T.: -0.008 min  
 Response: 3338565  
 Conc: 1.53 ng/ml



#6 MCPP  
 R.T.: 7.536 min  
 Delta R.T.: -0.016 min  
 Response: 10846874  
 Conc: 2.56 ug/ml



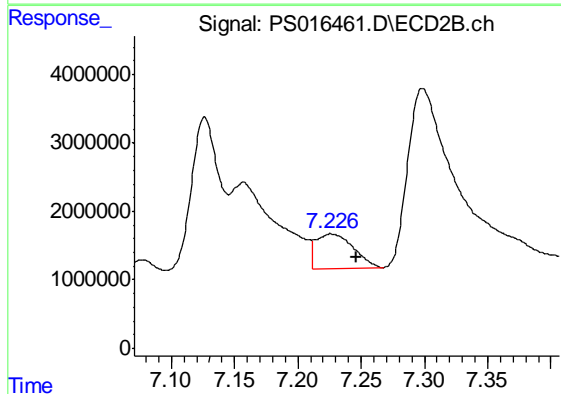
#6 MCPP  
 R.T.: 7.077 min  
 Delta R.T.: 0.045 min  
 Response: 3077547  
 Conc: 1.78 ug/ml



#7 MCPA

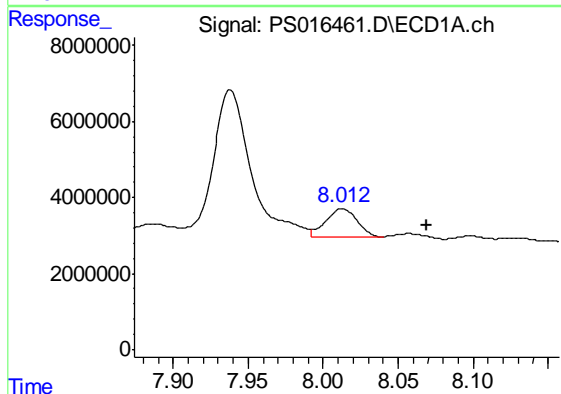
R.T.: 7.662 min  
Delta R.T.: -0.040 min  
Response: 206291337  
Conc: 33.49 ug/ml

Instrument :  
ECD\_S  
ClientSampled :  
18S



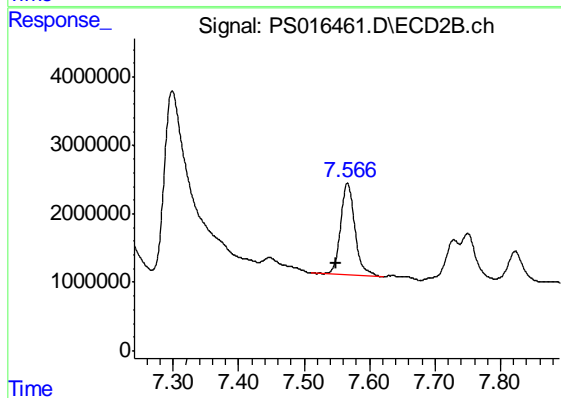
#7 MCPA

R.T.: 7.226 min  
Delta R.T.: -0.019 min  
Response: 10497339  
Conc: 3.85 ug/ml



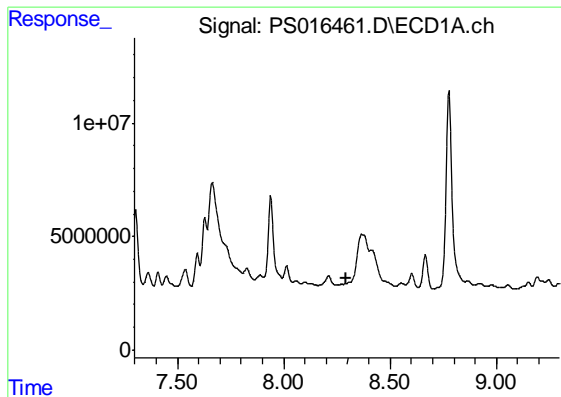
#8 DICHLORPROP

R.T.: 8.013 min  
Delta R.T.: -0.056 min  
Response: 10671396  
Conc: 7.93 ng/ml



#8 DICHLORPROP

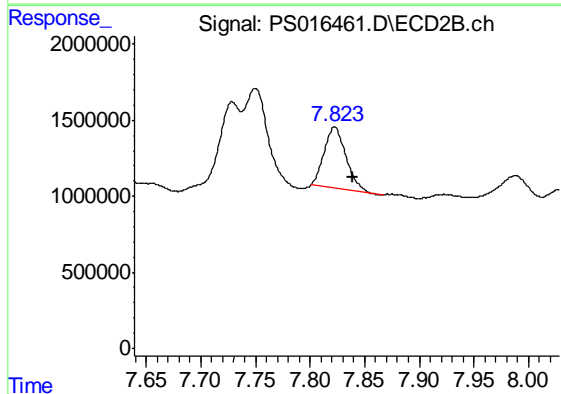
R.T.: 7.566 min  
Delta R.T.: 0.017 min  
Response: 20542735  
Conc: 37.92 ng/ml



#9 2,4-D

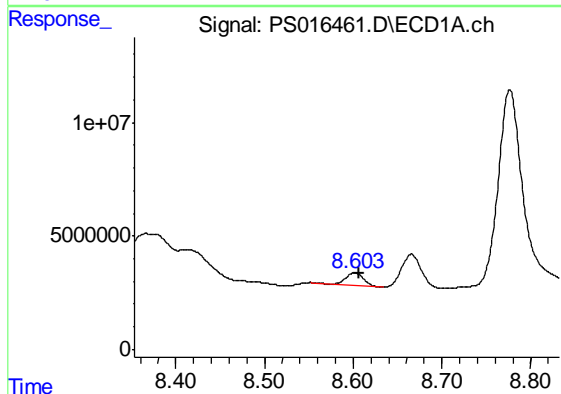
R.T.: 0.000 min  
 Exp R.T.: 8.297 min  
 Response: 0  
 Conc: N.D.

Instrument :  
 ECD\_S  
 ClientSampleId :  
 18S



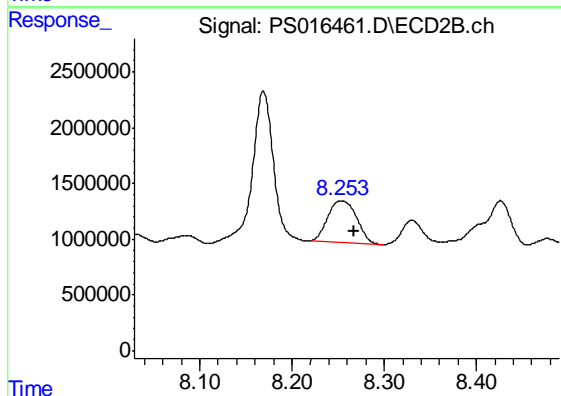
#9 2,4-D

R.T.: 7.823 min  
 Delta R.T.: -0.017 min  
 Response: 5510123  
 Conc: 8.70 ng/ml



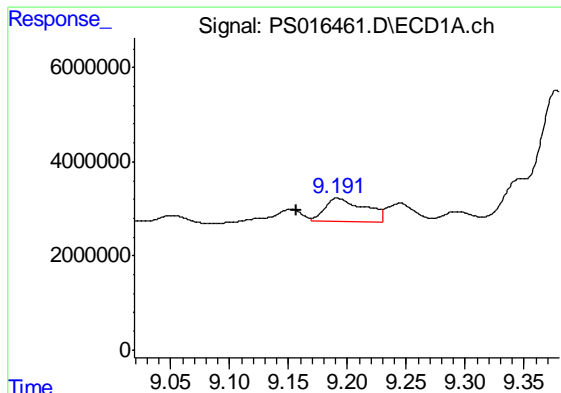
#10 Pentachlorophenol

R.T.: 8.602 min  
 Delta R.T.: -0.005 min  
 Response: 7588829  
 Conc: N.D.



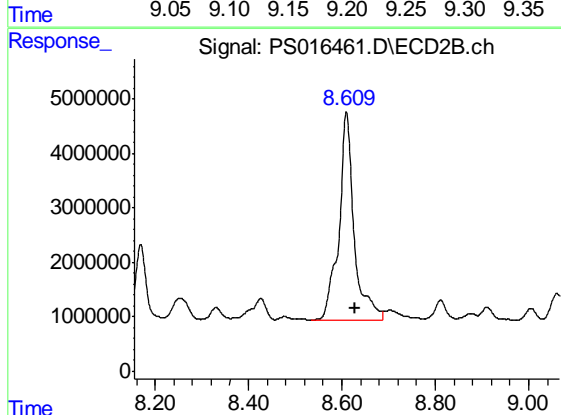
#10 Pentachlorophenol

R.T.: 8.253 min  
 Delta R.T.: -0.014 min  
 Response: 8081760  
 Conc: 1.09 ng/ml

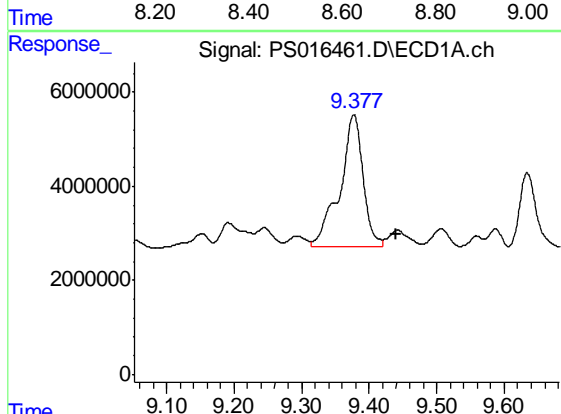


#11 2,4,5-TP (SILVEX)  
 R.T.: 9.192 min  
 Delta R.T.: 0.035 min  
 Response: 11583482  
 Conc: 1.60 ng/ml

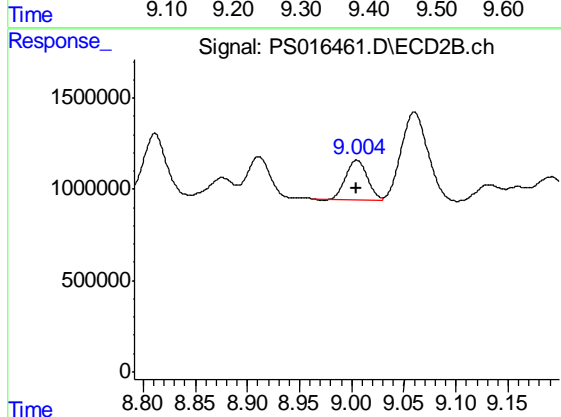
Instrument :  
 ECD\_S  
 ClientSampled :  
 18S



#11 2,4,5-TP (SILVEX)  
 R.T.: 8.610 min  
 Delta R.T.: -0.019 min  
 Response: 86458377  
 Conc: 29.63 ng/ml

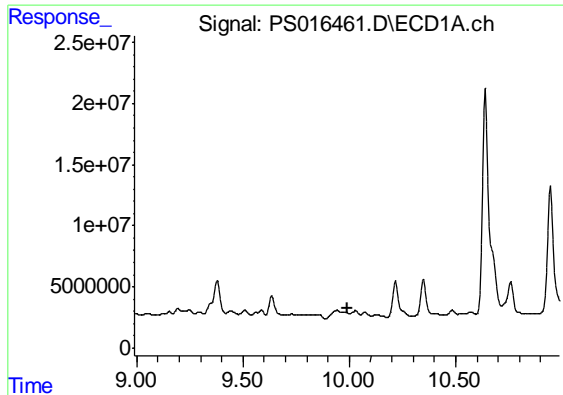


#12 2,4,5-T  
 R.T.: 9.377 min  
 Delta R.T.: -0.063 min  
 Response: 67133145  
 Conc: 8.81 ng/ml



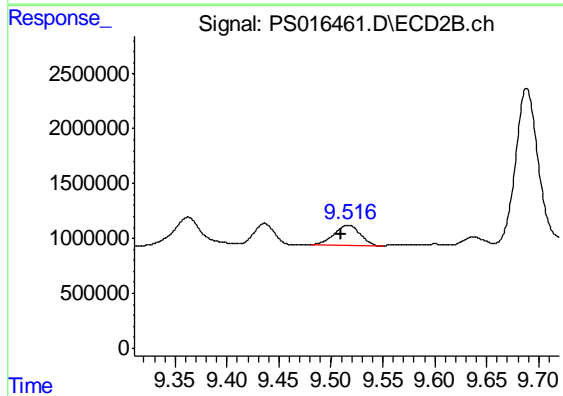
#12 2,4,5-T  
 R.T.: 9.005 min  
 Delta R.T.: 0.000 min  
 Response: 3031495  
 Conc: 1.05 ng/ml



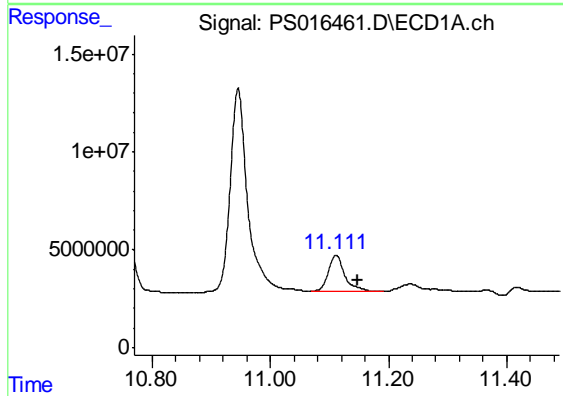


#13 2,4-DB  
 R.T.: 0.000 min  
 Exp R.T. : 9.989 min  
 Response: 0  
 Conc: N.D.

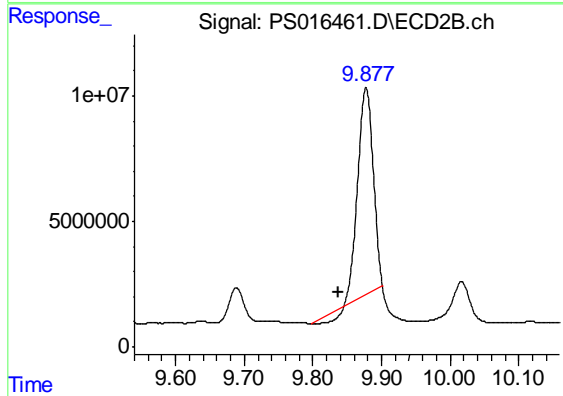
Instrument :  
 ECD\_S  
 ClientSampled :  
 18S



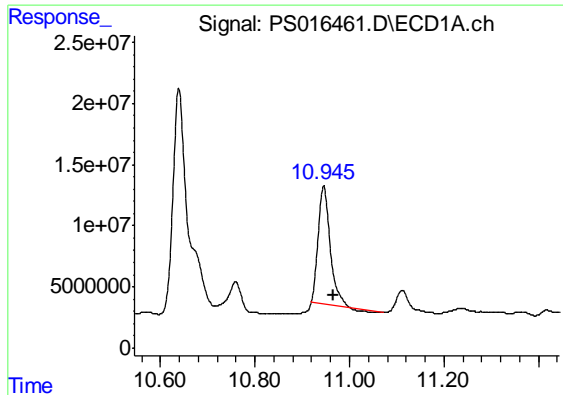
#13 2,4-DB  
 R.T.: 9.517 min  
 Delta R.T.: 0.006 min  
 Response: 3257999  
 Conc: 8.61 ng/ml



#14 DINOSEB  
 R.T.: 11.111 min  
 Delta R.T.: -0.037 min  
 Response: 35639077  
 Conc: 6.76 ng/ml



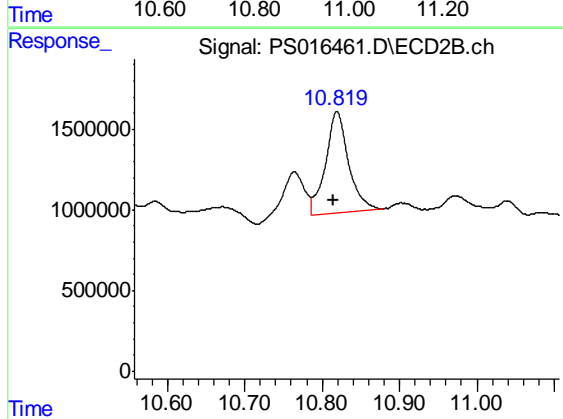
#14 DINOSEB  
 R.T.: 9.878 min  
 Delta R.T.: 0.040 min  
 Response: 123643998  
 Conc: 60.69 ng/ml



#15 Picloram

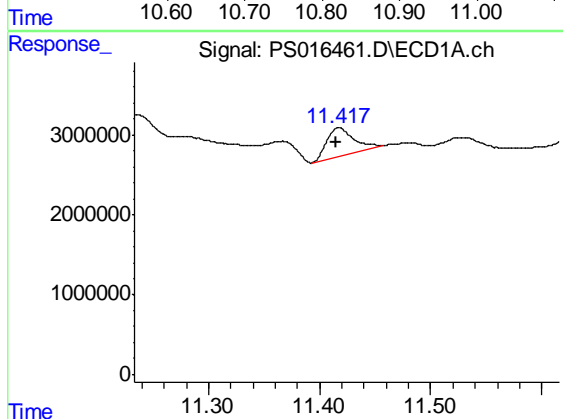
R.T.: 10.945 min  
 Delta R.T.: -0.022 min  
 Response: 166575362  
 Conc: 16.69 ng/ml

Instrument :  
 ECD\_S  
 ClientSampled :  
 18S



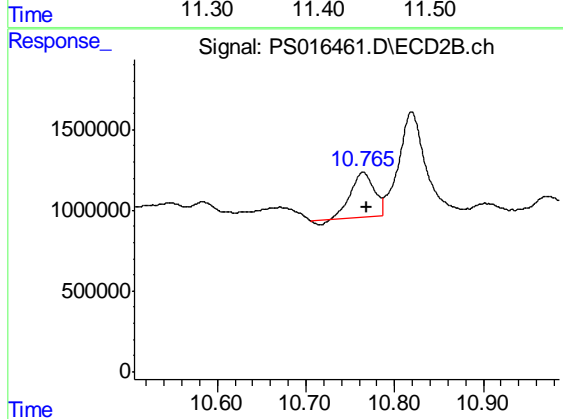
#15 Picloram

R.T.: 10.819 min  
 Delta R.T.: 0.004 min  
 Response: 12982673  
 Conc: 3.22 ng/ml



#16 DCPA

R.T.: 11.417 min  
 Delta R.T.: 0.002 min  
 Response: 5847765  
 Conc: N.D.



#16 DCPA

R.T.: 10.764 min  
 Delta R.T.: -0.004 min  
 Response: 5039632  
 Conc: 1.12 ng/ml