

Data Path : Z:\pestpcbsrv\HPCHEM1\ECD_S\Data\PS081820\
 Data File : PS011842.D
 Signal(s) : Signal #1: ECD1A.ch Signal #2: ECD2B.ch
 Acq On : 19 Aug 2020 00:20
 Operator : DD\AJ
 Sample : L3689-08
 Misc :
 ALS Vial : 21 Sample Multiplier: 1

Instrument :
 ECD_S
 ClientSampleId :

Integration File signal 1: autoint1.e
 Integration File signal 2: autoint2.e
 Quant Time: Aug 19 02:51:31 2020
 Quant Method : Z:\pestpcbsrv\HPCHEM1\ECD_S\Method\PS081120.M
 Quant Title : 8080.M
 QLast Update : Tue Aug 11 15:43:16 2020
 Response via : Initial Calibration
 Integrator: ChemStation

Volume Inj. : 2 µl
 Signal #1 Phase : Rtx-CLPesticides Signal #2 Phase: Rtx-CLPesticides2
 Signal #1 Info : 30M x 0.32mm x0.5 Signal #2 Info : 30M x 0.32mm x 0.25µm

	Compound	RT#1	RT#2	Resp#1	Resp#2	ng/ml	ng/ml

System Monitoring Compounds							
4) S	2,4-DCAA	7.219	6.914	322.2E6	172.9E6	295.423	323.304
Target Compounds							
2) T	3,5-DICHL...	0.000	6.095	0	51190038	N.D.	62.228
5) T	DICAMBA	7.397	7.048	9968539	12902523	2.434	5.972 #
6) T	MCP	7.573	0.000	6513240	0	2.039	N.D. #
7) T	MCPA	7.765	7.376	23765344	35922074	5.225	13.110 #
9) T	2,4-D	8.394	0.000	122.8E6	0	108.750	N.D. #
10) T	Pentachlo...	8.691	0.000	10132888	0	<MDL	N.D. #
11) T	2,4,5-TP ...	0.000	8.762	0	31017822	N.D.	10.609
12) T	2,4,5-T	9.494	0.000	30546806	0	5.155	N.D. #
13) T	2,4-DB	9.981	9.619	33062142	17650620	41.610	42.204
15) T	Picloram	0.000	11.008	0	54279462	N.D.	11.976
16) T	DCPA	11.521	11.008	44862553	54279462	5.900	14.762 #

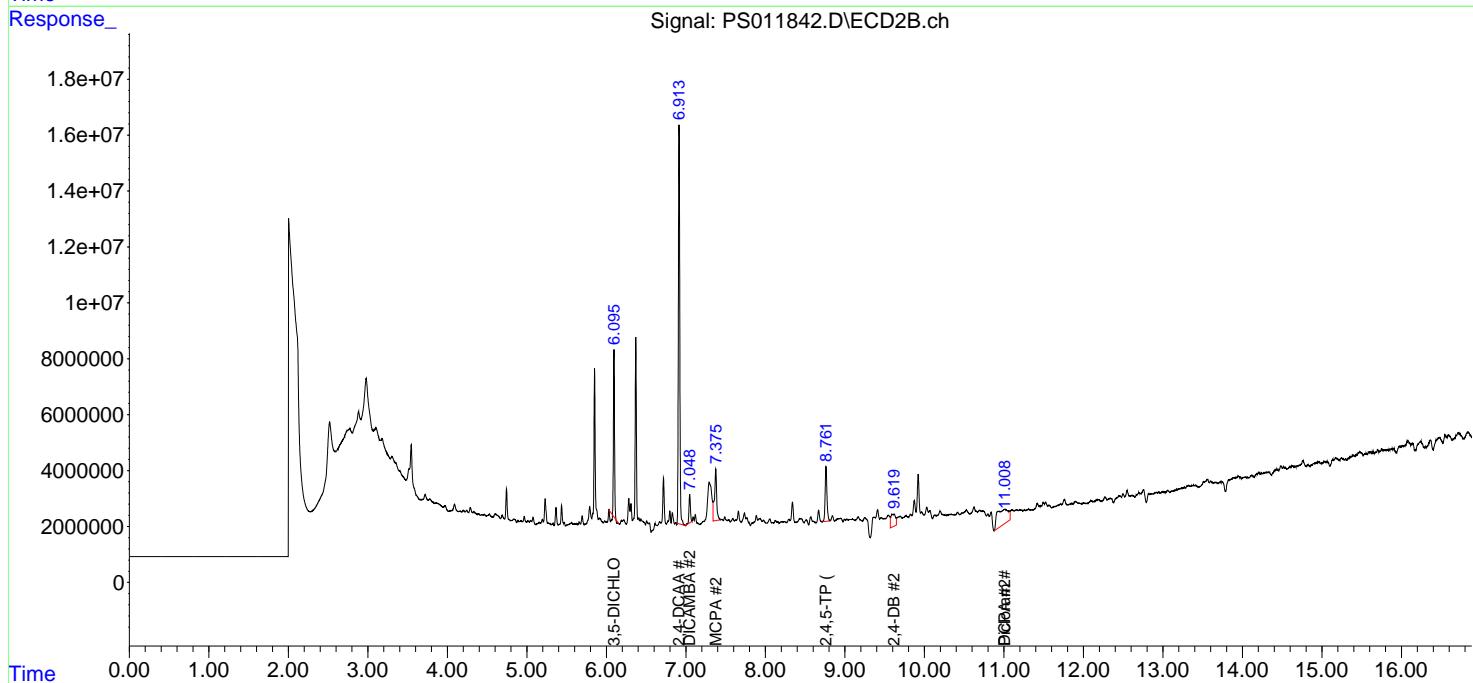
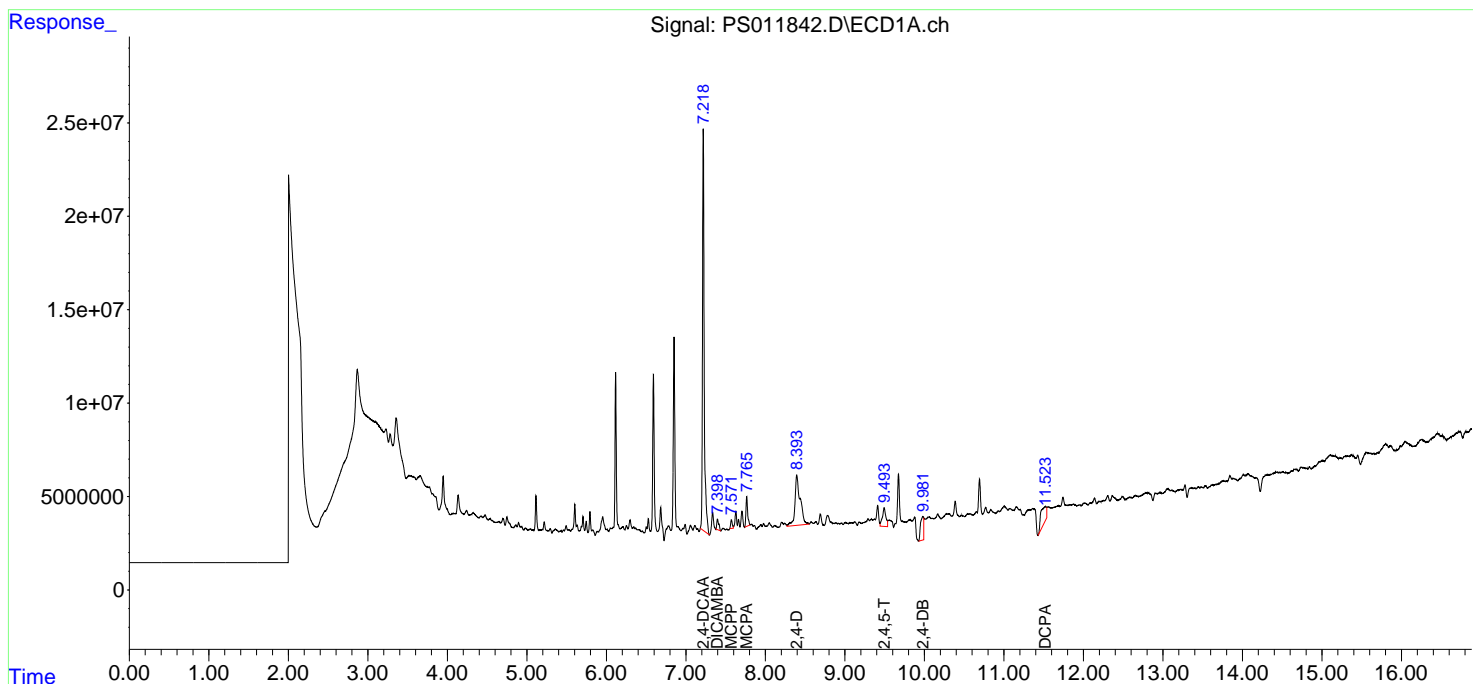
(f)=RT Delta > 1/2 Window (#)=Amounts differ by > 25% (m)=manual int.

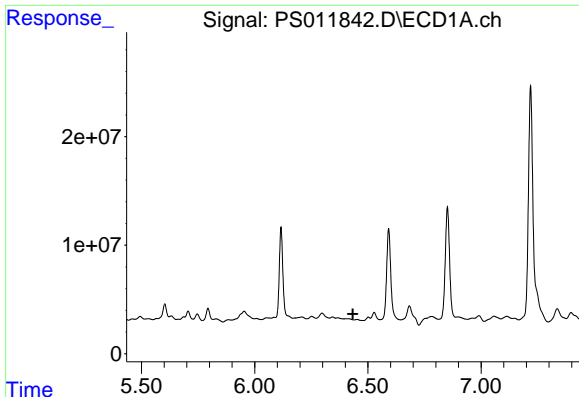
Data Path : Z:\pestpcbsrv\HPCHEM1\ECD_S\Data\PS081820\
 Data File : PS011842.D
 Signal(s) : Signal #1: ECD1A.ch Signal #2: ECD2B.ch
 Acq On : 19 Aug 2020 00:20
 Operator : DD\AJ
 Sample : L3689-08
 Misc :
 ALS Vial : 21 Sample Multiplier: 1

Instrument :
 ECD_S
 ClientSampled :

Integration File signal 1: autoint1.e
 Integration File signal 2: autoint2.e
 Quant Time: Aug 19 02:51:31 2020
 Quant Method : Z:\pestpcbsrv\HPCHEM1\ECD_S\Method\PS081120.M
 Quant Title : 8080.M
 QLast Update : Tue Aug 11 15:43:16 2020
 Response via : Initial Calibration
 Integrator: ChemStation

Volume Inj. : 2 µl
 Signal #1 Phase : Rtx-CLPesticides Signal #2 Phase: Rtx-CLPesticides2
 Signal #1 Info : 30M x 0.32mm x0.5 Signal #2 Info : 30M x 0.32mm x 0.25µm

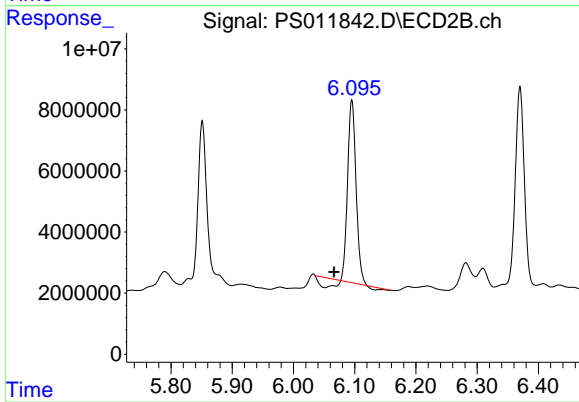




#2 3,5-DICHLOROBENZOIC ACID

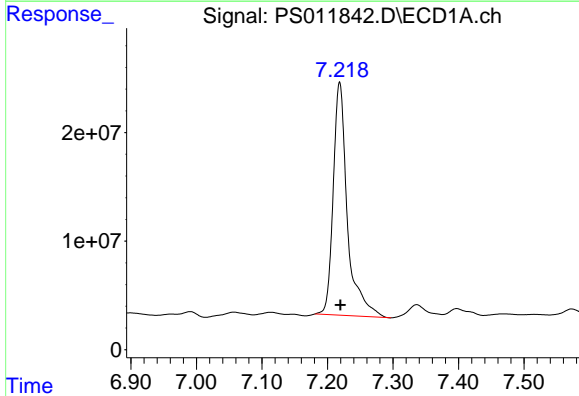
R.T.: 0.000 min
 Exp R.T.: 6.434 min
 Response: 0
 Conc: N.D.

Instrument :
 ECD_S
 ClientSampled :



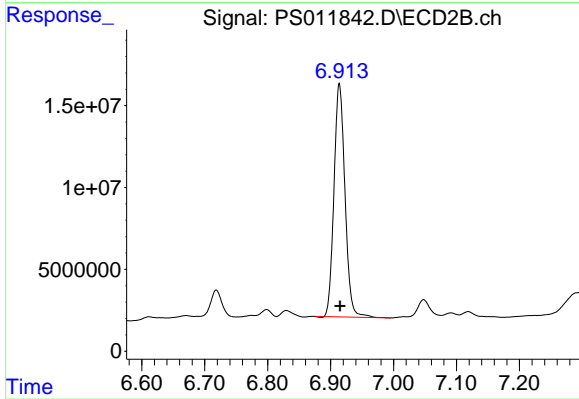
#2 3,5-DICHLOROBENZOIC ACID

R.T.: 6.095 min
 Delta R.T.: 0.029 min
 Response: 51190038
 Conc: 62.23 ng/ml



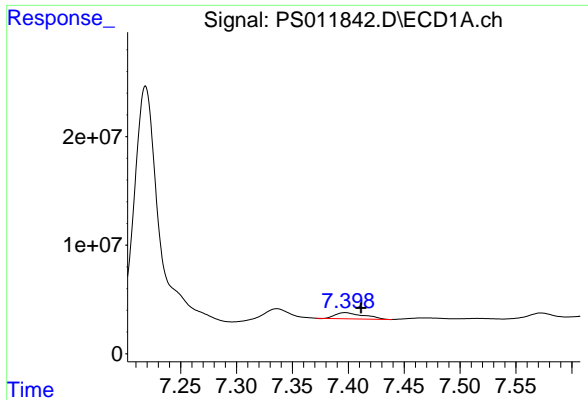
#4 2,4-DCAA

R.T.: 7.219 min
 Delta R.T.: -0.002 min
 Response: 322238030
 Conc: 295.42 ng/ml



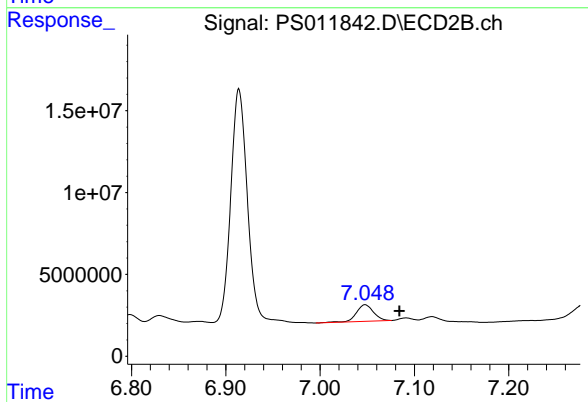
#4 2,4-DCAA

R.T.: 6.914 min
 Delta R.T.: -0.001 min
 Response: 172898926
 Conc: 323.30 ng/ml

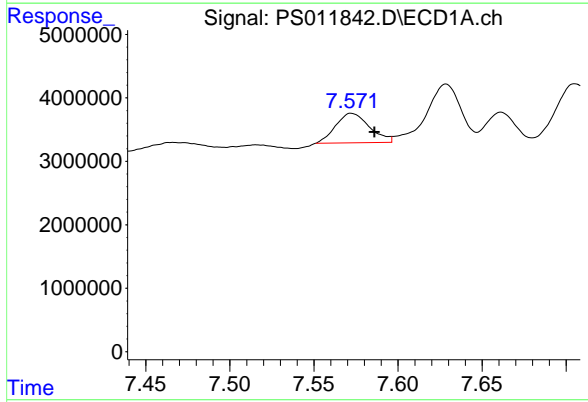


#5 DICAMBA
 R.T.: 7.397 min
 Delta R.T.: -0.014 min
 Response: 9968539
 Conc: 2.43 ng/ml

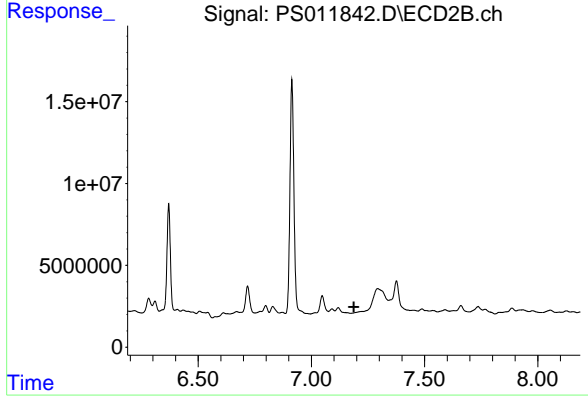
Instrument :
 ECD_S
 ClientSampled :



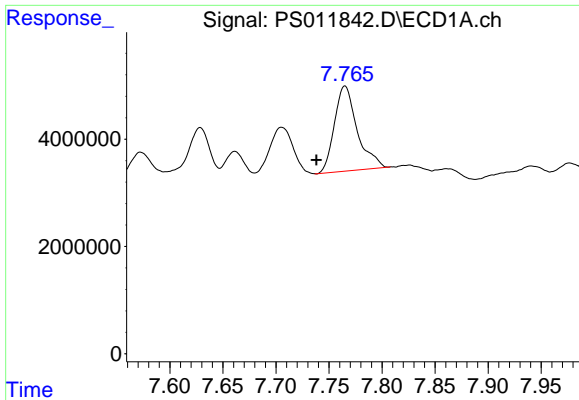
#5 DICAMBA
 R.T.: 7.048 min
 Delta R.T.: -0.036 min
 Response: 12902523
 Conc: 5.97 ng/ml



#6 MCP
 R.T.: 7.573 min
 Delta R.T.: -0.013 min
 Response: 6513240
 Conc: 2.04 ug/ml



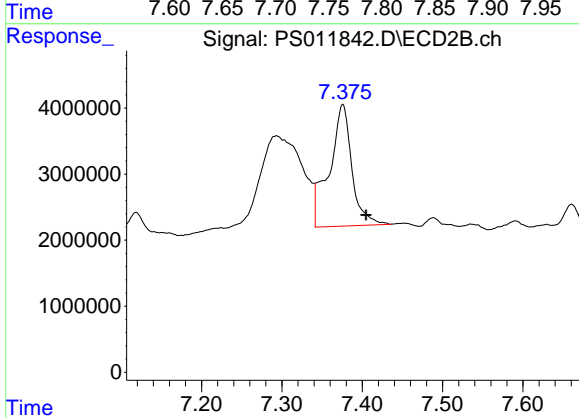
#6 MCP
 R.T.: 0.000 min
 Exp R.T.: 7.188 min
 Response: 0
 Conc: N.D.



#7 MCPA

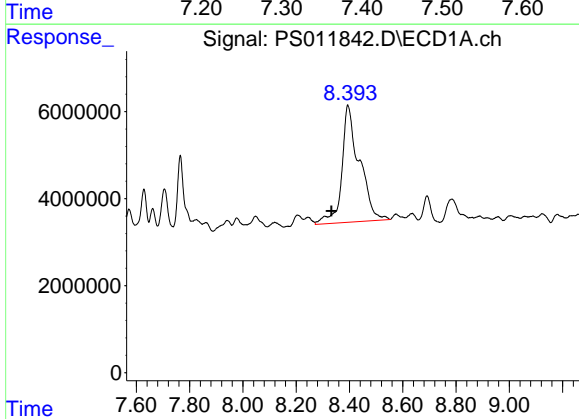
R.T.: 7.765 min
 Delta R.T.: 0.027 min
 Response: 23765344
 Conc: 5.22 ug/ml

Instrument :
 ECD_S
 ClientSampled :



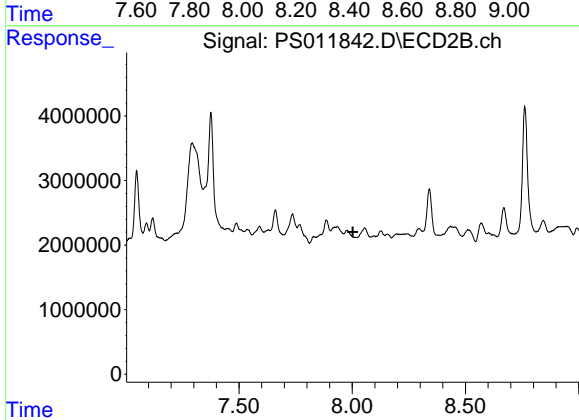
#7 MCPA

R.T.: 7.376 min
 Delta R.T.: -0.029 min
 Response: 35922074
 Conc: 13.11 ug/ml



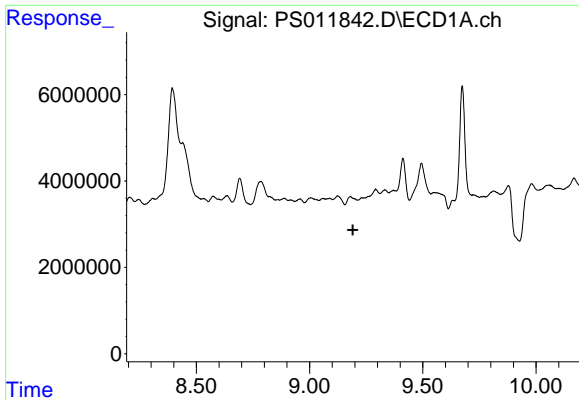
#9 2,4-D

R.T.: 8.394 min
 Delta R.T.: 0.062 min
 Response: 122788400
 Conc: 108.75 ng/ml



#9 2,4-D

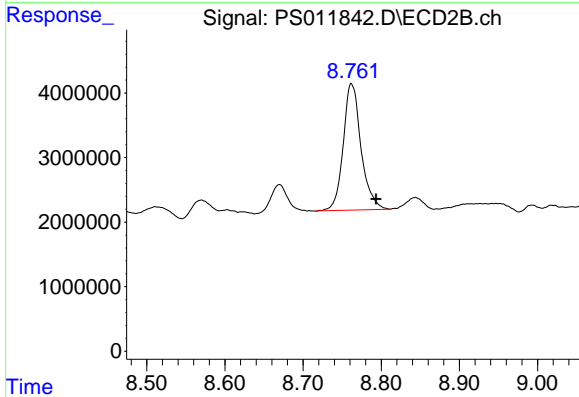
R.T.: 0.000 min
 Exp R.T.: 8.003 min
 Response: 0
 Conc: N.D.



#11 2,4,5-TP (SILVEX)

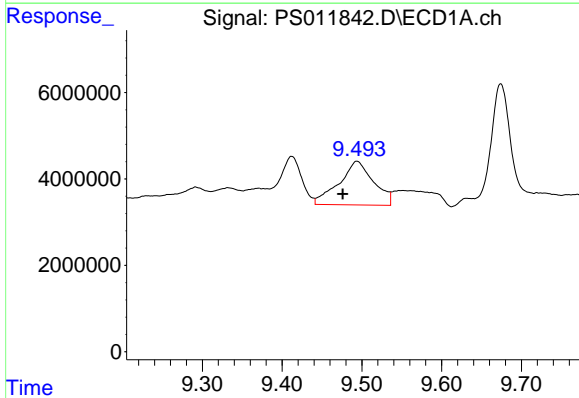
R.T.: 0.000 min
 Exp R.T.: 9.191 min
 Response: 0
 Conc: N.D.

Instrument :
 ECD_S
 ClientSampleId :



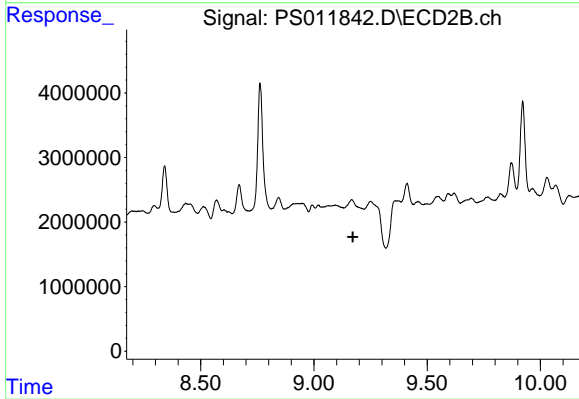
#11 2,4,5-TP (SILVEX)

R.T.: 8.762 min
 Delta R.T.: -0.031 min
 Response: 31017822
 Conc: 10.61 ng/ml



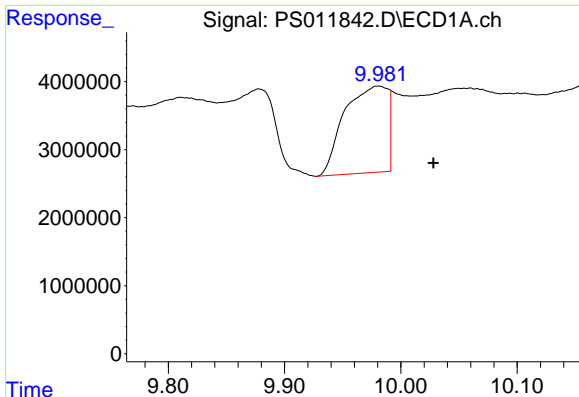
#12 2,4,5-T

R.T.: 9.494 min
 Delta R.T.: 0.018 min
 Response: 30546806
 Conc: 5.15 ng/ml



#12 2,4,5-T

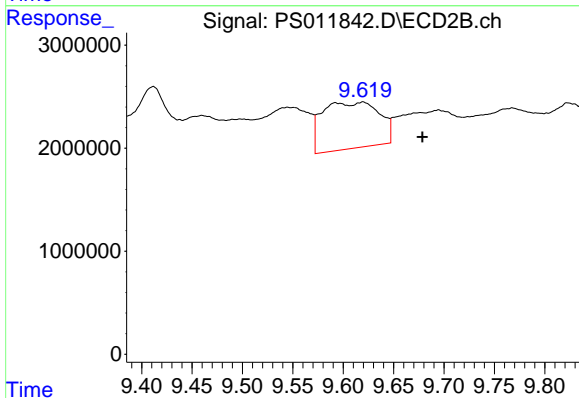
R.T.: 0.000 min
 Exp R.T.: 9.172 min
 Response: 0
 Conc: N.D.



#13 2,4-DB

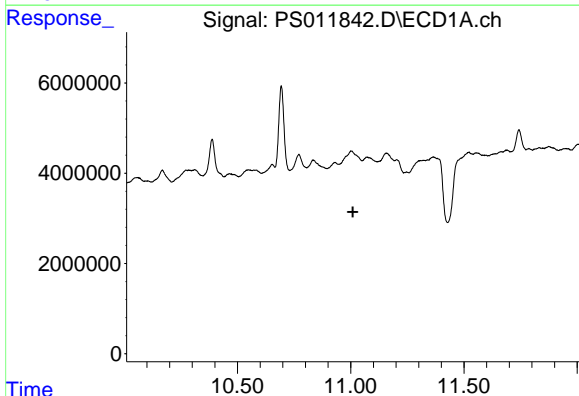
R.T.: 9.981 min
 Delta R.T.: -0.047 min
 Response: 33062142
 Conc: 41.61 ng/ml

Instrument :
 ECD_S
 ClientSampled :



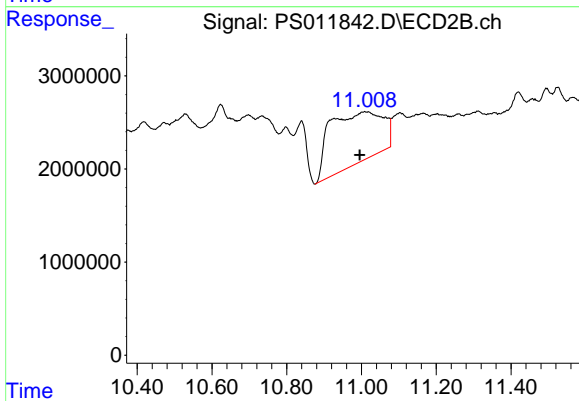
#13 2,4-DB

R.T.: 9.619 min
 Delta R.T.: -0.059 min
 Response: 17650620
 Conc: 42.20 ng/ml



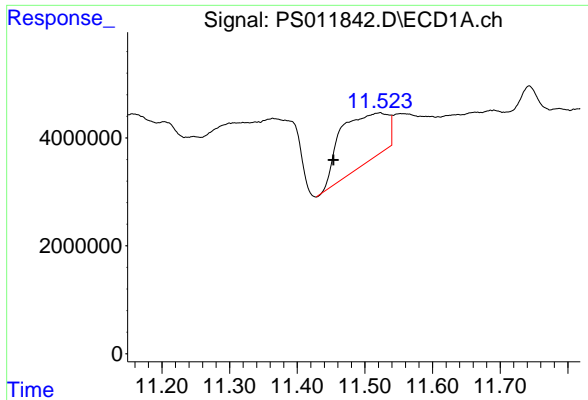
#15 Picloram

R.T.: 0.000 min
 Exp R.T. : 11.009 min
 Response: 0
 Conc: N.D.



#15 Picloram

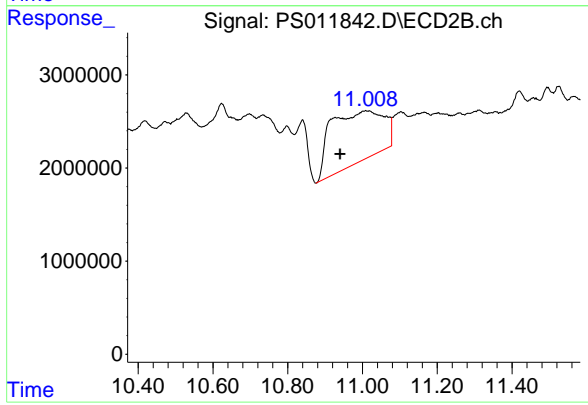
R.T.: 11.008 min
 Delta R.T.: 0.013 min
 Response: 54279462
 Conc: 11.98 ng/ml



#16 DCPA

R.T.: 11.521 min
Delta R.T.: 0.068 min
Response: 44862553
Conc: 5.90 ng/ml

Instrument :
ECD_S
ClientSampleId :



#16 DCPA

R.T.: 11.008 min
Delta R.T.: 0.068 min
Response: 54279462
Conc: 14.76 ng/ml