

Data Path : Z:\pestpcbsrv\HPCHEM1\ECD_S\Data\PS081821\
 Data File : PS016477.D
 Signal(s) : Signal #1: ECD1A.ch Signal #2: ECD2B.ch
 Acq On : 18 Aug 2021 12:53
 Operator : DD\AJ
 Sample : I.BLK
 Misc :
 ALS Vial : 2 Sample Multiplier: 1

Instrument :
 ECD_S
 ClientSampleId :
 I.BLK

Integration File signal 1: autoint1.e
 Integration File signal 2: autoint2.e
 Quant Time: Aug 19 00:48:54 2021
 Quant Method : Z:\pestpcbsrv\HPCHEM1\ECD_S\Method\PS080221.M
 Quant Title : 8080.M
 QLast Update : Mon Aug 02 14:10:19 2021
 Response via : Initial Calibration
 Integrator: ChemStation

Volume Inj. : 2 µl
 Signal #1 Phase : Rtx-CLPesticides Signal #2 Phase: Rtx-CLPesticides2
 Signal #1 Info : 30M x 0.32mm x0.5 Signal #2 Info : 30M x 0.32mm x 0.25µm

Compound	RT#1	RT#2	Resp#1	Resp#2	ng/ml	ng/ml

System Monitoring Compounds						
4) S 2,4-DCAA	7.186	6.765	608.5E6	264.7E6	413.643	507.465
Target Compounds						
12) T 2,4,5-T	9.392f	0.000	11621734	0	1.525	N.D. #
15) T Picloram	11.018f	10.838	90362112	41899890	9.054	10.406

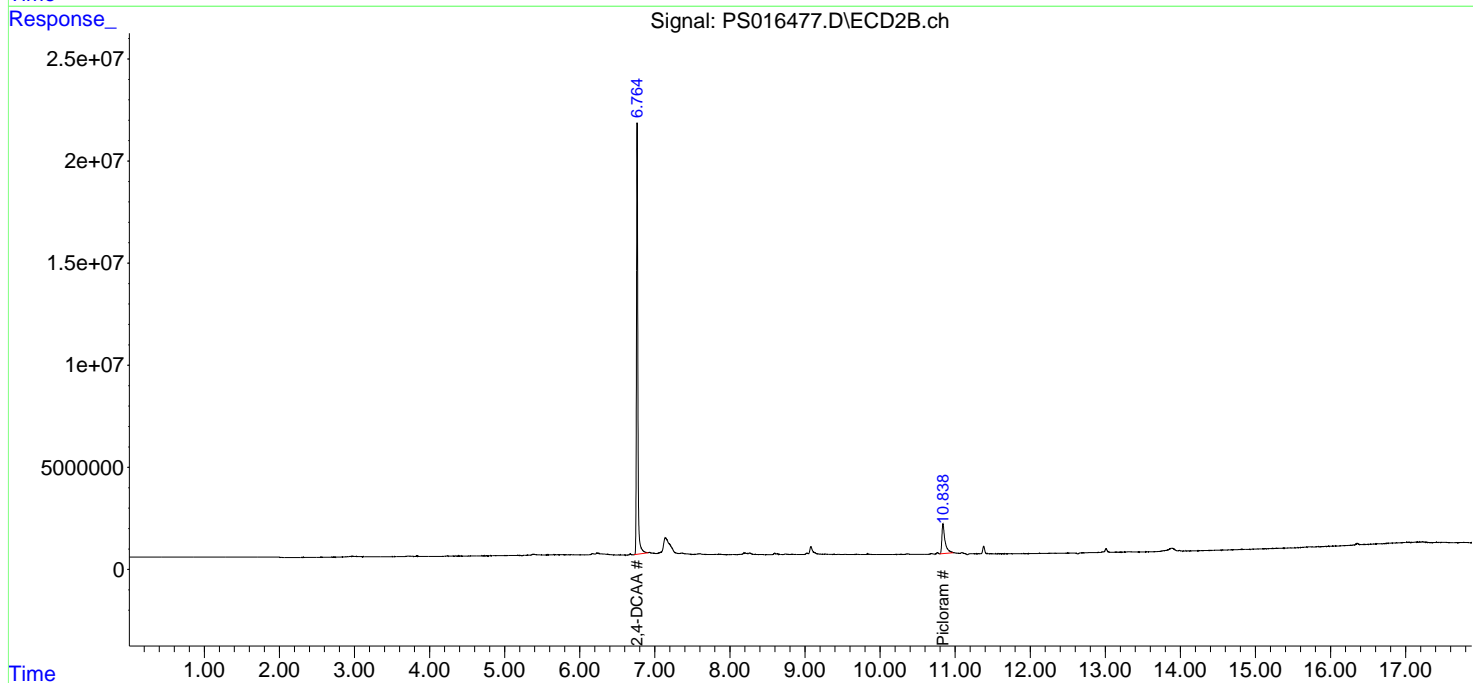
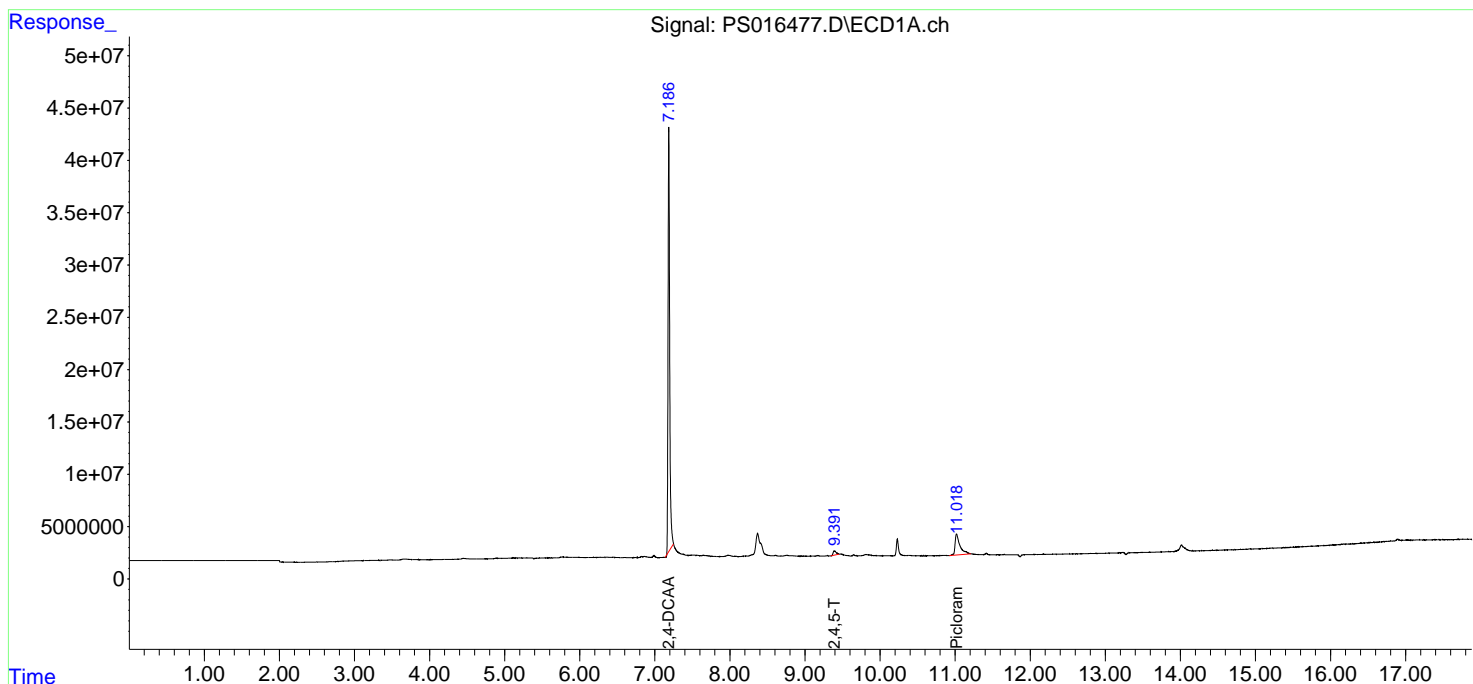
(f)=RT Delta > 1/2 Window (#)=Amounts differ by > 25% (m)=manual int.

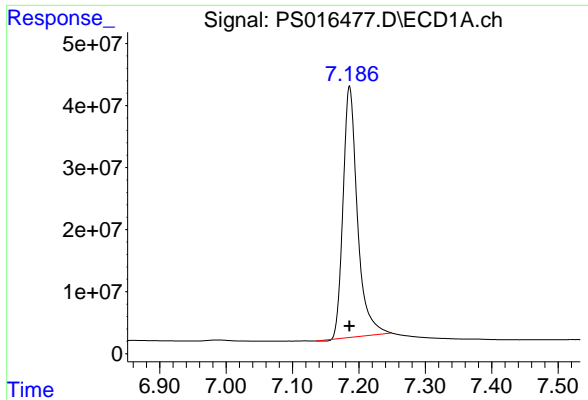
Data Path : Z:\pestpcbsrv\HPCHEM1\ECD_S\Data\PS081821\
 Data File : PS016477.D
 Signal(s) : Signal #1: ECD1A.ch Signal #2: ECD2B.ch
 Acq On : 18 Aug 2021 12:53
 Operator : DD\AJ
 Sample : I.BLK
 Misc :
 ALS Vial : 2 Sample Multiplier: 1

Instrument :
 ECD_S
 ClientSampleId :
 I.BLK

Integration File signal 1: autoint1.e
 Integration File signal 2: autoint2.e
 Quant Time: Aug 19 00:48:54 2021
 Quant Method : Z:\pestpcbsrv\HPCHEM1\ECD_S\Method\PS080221.M
 Quant Title : 8080.M
 QLast Update : Mon Aug 02 14:10:19 2021
 Response via : Initial Calibration
 Integrator: ChemStation

Volume Inj. : 2 µl
 Signal #1 Phase : Rtx-CLPesticides Signal #2 Phase: Rtx-CLPesticides2
 Signal #1 Info : 30M x 0.32mm x 0.5 Signal #2 Info : 30M x 0.32mm x 0.25µm

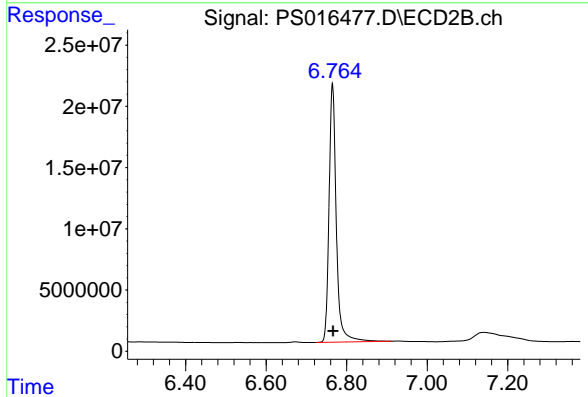




#4 2,4-DCAA

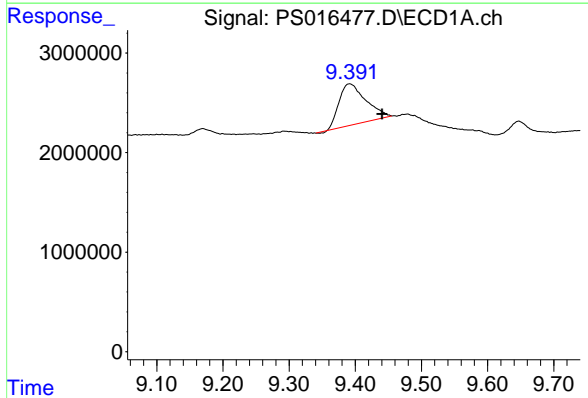
R.T.: 7.186 min
 Delta R.T.: 0.000 min
 Response: 608512282
 Conc: 413.64 ng/ml

Instrument :
 ECD_S
 ClientSampleId :
 I.BLK



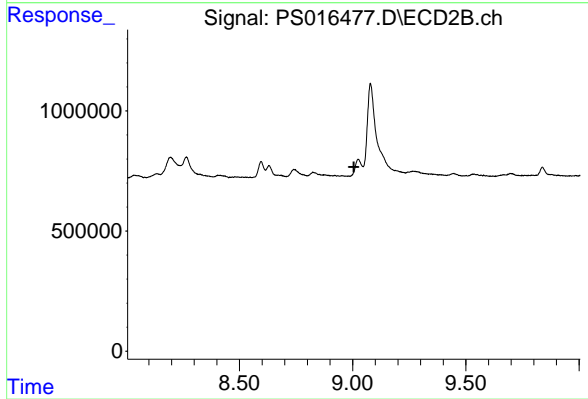
#4 2,4-DCAA

R.T.: 6.765 min
 Delta R.T.: -0.001 min
 Response: 264706384
 Conc: 507.47 ng/ml



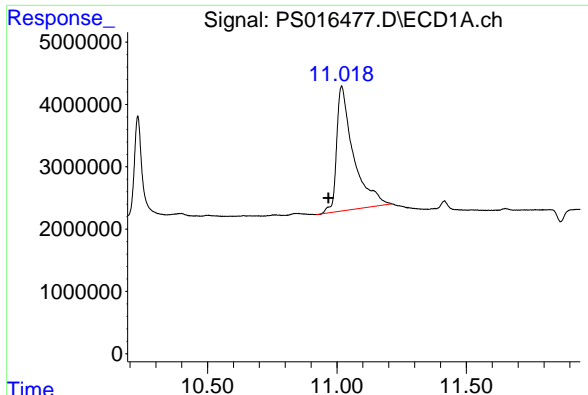
#12 2,4,5-T

R.T.: 9.392 min
 Delta R.T.: -0.049 min
 Response: 11621734
 Conc: 1.52 ng/ml



#12 2,4,5-T

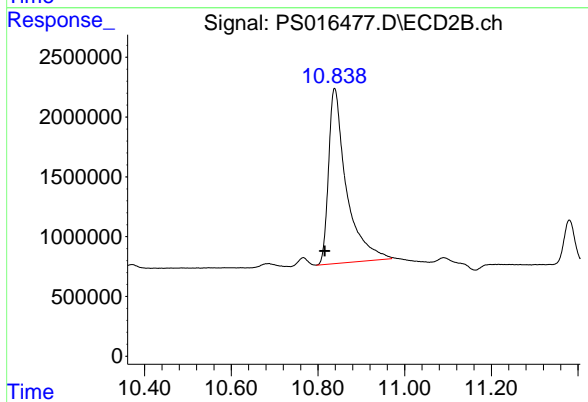
R.T.: 0.000 min
 Exp R.T.: 9.005 min
 Response: 0
 Conc: N.D.



#15 Picloram

R.T.: 11.018 min
Delta R.T.: 0.051 min
Response: 90362112
Conc: 9.05 ng/ml

Instrument :
ECD_S
ClientSampleId :
I.BLK



#15 Picloram

R.T.: 10.838 min
Delta R.T.: 0.023 min
Response: 41899890
Conc: 10.41 ng/ml