

Data Path : Z:\pestpcbsrv\HPCHEM1\ECD\_S\Data\PS081919\  
 Data File : PS006198.D  
 Signal(s) : Signal #1: ECD1A.ch Signal #2: ECD2B.ch  
 Acq On : 19 Aug 2019 08:33  
 Operator : SM\AJ  
 Sample : HEXANE  
 Misc :  
 ALS Vial : 1 Sample Multiplier: 1

Instrument :  
 ECD\_S  
 ClientSampleId :

Integration File signal 1: autoint1.e  
 Integration File signal 2: autoint2.e  
 Quant Time: Aug 19 15:02:04 2019  
 Quant Method : Z:\pestpcbsrv\HPCHEM1\ECD\_S\Method\PS081419.M  
 Quant Title : 8080.M  
 QLast Update : Wed Aug 14 15:09:52 2019  
 Response via : Initial Calibration  
 Integrator: ChemStation

Volume Inj. : 2 µl  
 Signal #1 Phase : Rtx-CLPesticides Signal #2 Phase: Rtx-CLPesticides2  
 Signal #1 Info : 30M x 0.32mm x0.5 Signal #2 Info : 30M x 0.32mm x 0.25µm

Compound	RT#1	RT#2	Resp#1	Resp#2	ng/ml	ng/ml
----------	------	------	--------	--------	-------	-------

System Monitoring Compounds

Target Compounds

3) T	4-Nitroph...	0.000	4.982	0	175.6E6	N.D.	708.903
8) T	DICHLORPROP	6.309	0.000	43340682	0	57.149	N.D. #
9) T	2,4-D	6.513	0.000	242.9E6	0	298.056	N.D. #

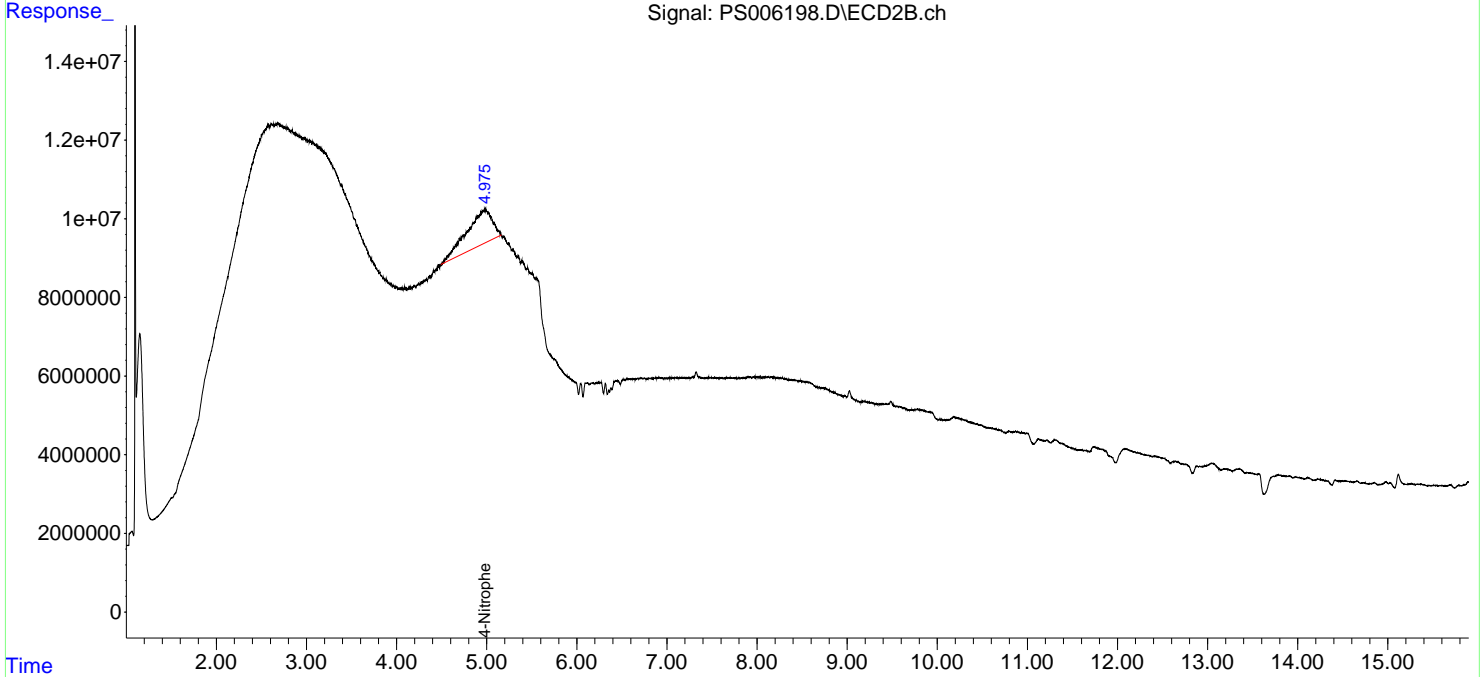
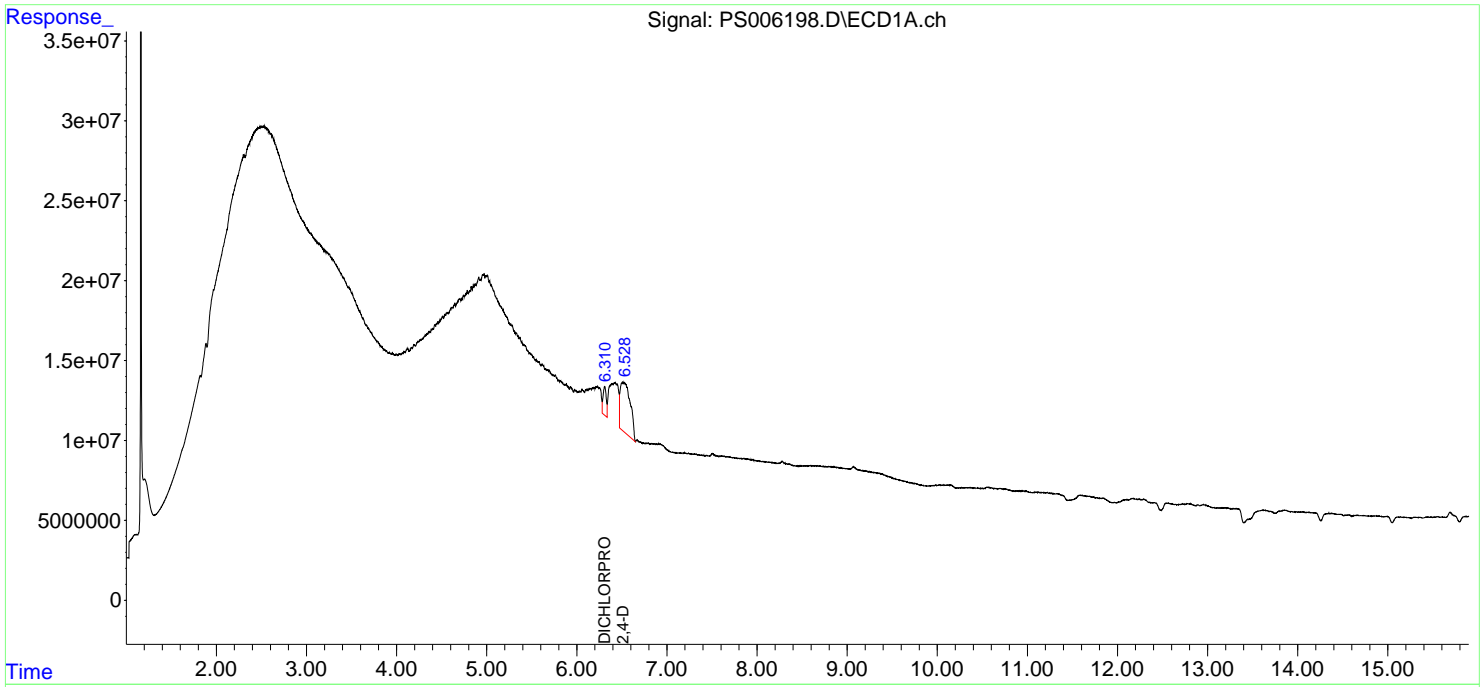
(f)=RT Delta > 1/2 Window (#)=Amounts differ by > 25% (m)=manual int.

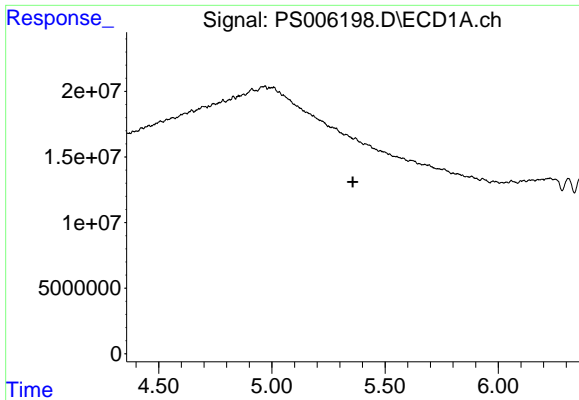
Data Path : Z:\pestpcbsrv\HPCHEM1\ECD\_S\Data\PS081919\  
 Data File : PS006198.D  
 Signal(s) : Signal #1: ECD1A.ch Signal #2: ECD2B.ch  
 Acq On : 19 Aug 2019 08:33  
 Operator : SM\AJ  
 Sample : HEXANE  
 Misc :  
 ALS Vial : 1 Sample Multiplier: 1

Instrument :  
 ECD\_S  
 ClientSampleId :

Integration File signal 1: autoint1.e  
 Integration File signal 2: autoint2.e  
 Quant Time: Aug 19 15:02:04 2019  
 Quant Method : Z:\pestpcbsrv\HPCHEM1\ECD\_S\Method\PS081419.M  
 Quant Title : 8080.M  
 QLast Update : Wed Aug 14 15:09:52 2019  
 Response via : Initial Calibration  
 Integrator: ChemStation

Volume Inj. : 2 µl  
 Signal #1 Phase : Rtx-CLPesticides Signal #2 Phase: Rtx-CLPesticides2  
 Signal #1 Info : 30M x 0.32mm x 0.5 Signal #2 Info : 30M x 0.32mm x 0.25µm

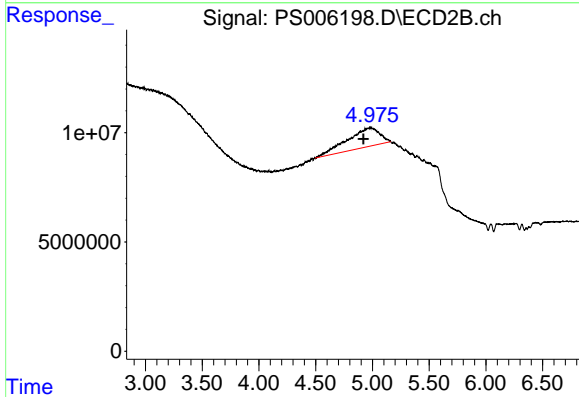




#3 4-Nitrophenol

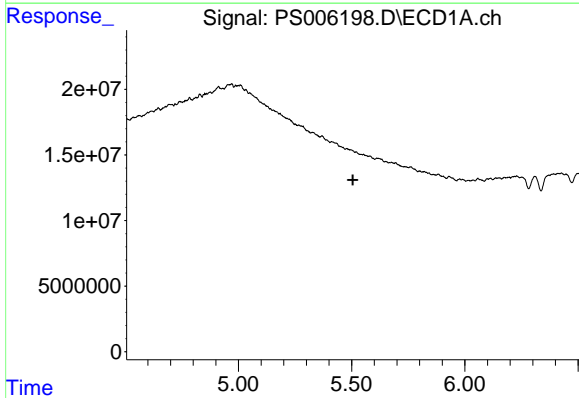
R.T.: 0.000 min  
 Exp R.T.: 5.358 min  
 Response: 0  
 Conc: N.D.

Instrument :  
 ECD\_S  
 ClientSampled :



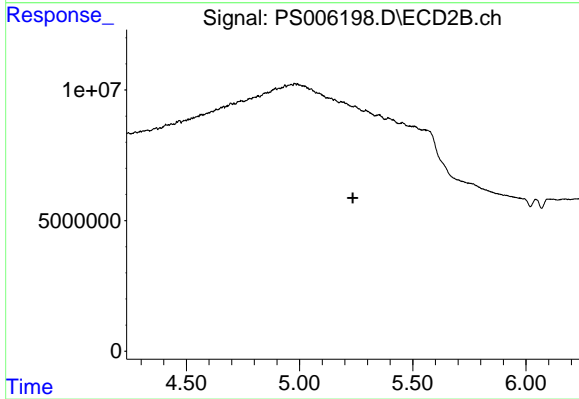
#3 4-Nitrophenol

R.T.: 4.982 min  
 Delta R.T.: 0.062 min  
 Response: 175612969  
 Conc: 708.90 ng/ml



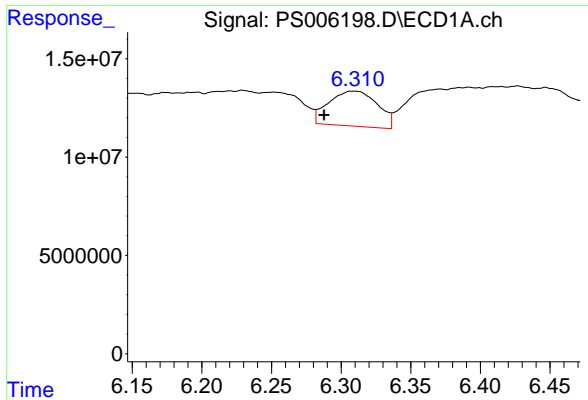
#4 2,4-DCAA

R.T.: 0.000 min  
 Exp R.T.: 5.505 min  
 Response: 0  
 Conc: N.D.



#4 2,4-DCAA

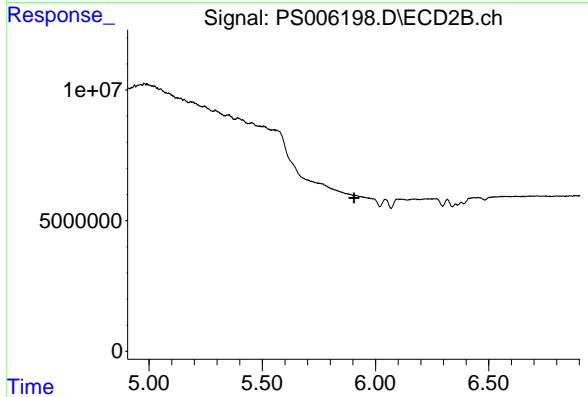
R.T.: 0.000 min  
 Exp R.T.: 5.236 min  
 Response: 0  
 Conc: N.D.



#8 DICHLORPROP

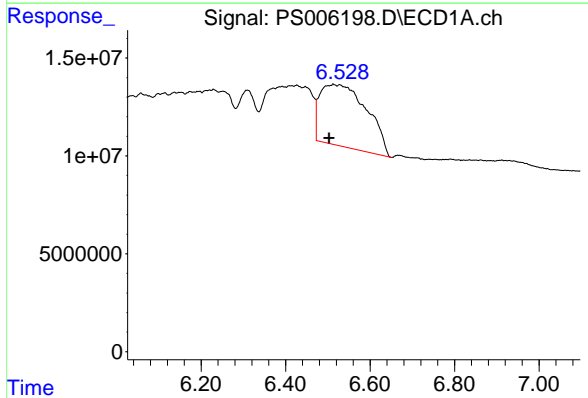
R.T.: 6.309 min  
 Delta R.T.: 0.021 min  
 Response: 43340682  
 Conc: 57.15 ng/ml

Instrument :  
 ECD\_S  
 ClientSampleId :



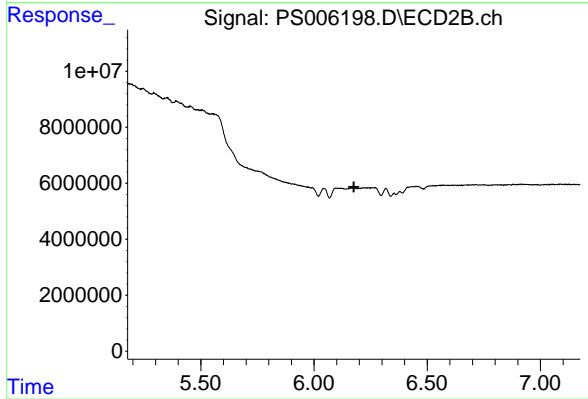
#8 DICHLORPROP

R.T.: 0.000 min  
 Exp R.T. : 5.905 min  
 Response: 0  
 Conc: N.D.



#9 2,4-D

R.T.: 6.513 min  
 Delta R.T.: 0.010 min  
 Response: 242851517  
 Conc: 298.06 ng/ml



#9 2,4-D

R.T.: 0.000 min  
 Exp R.T. : 6.176 min  
 Response: 0  
 Conc: N.D.