

Data Path : Z:\pestpcbsrv\HPCHEM1\ECD_S\Data\PS082120\
 Data File : PS011875.D
 Signal(s) : Signal #1: ECD1A.ch Signal #2: ECD2B.ch
 Acq On : 21 Aug 2020 17:55
 Operator : DD\AJ
 Sample : PB131144TB
 Misc :
 ALS Vial : 7 Sample Multiplier: 1

Instrument :
 ECD_S
 ClientSampleId :

Integration File signal 1: autoint1.e
 Integration File signal 2: autoint2.e
 Quant Time: Aug 21 18:15:07 2020
 Quant Method : Z:\pestpcbsrv\HPCHEM1\ECD_S\Method\PS081120.M
 Quant Title : 8080.M
 QLast Update : Tue Aug 11 15:43:16 2020
 Response via : Initial Calibration
 Integrator: ChemStation

Volume Inj. : 2 µl
 Signal #1 Phase : Rtx-CLPesticides Signal #2 Phase: Rtx-CLPesticides2
 Signal #1 Info : 30M x 0.32mm x0.5 Signal #2 Info : 30M x 0.32mm x 0.25µm

	Compound	RT#1	RT#2	Resp#1	Resp#2	ng/ml	ng/ml

System Monitoring Compounds							
4) S	2,4-DCAA	7.220	6.916	254.3E6	161.5E6	233.095	301.986 #
Target Compounds							
2) T	3,5-DICHL...	0.000	6.096	0	46822395	N.D.	56.919
3) T	4-Nitroph...	6.986	0.000	1819887	0	3.090	N.D. #
5) T	DICAMBA	7.397	7.049	7676838	10624876	1.874	4.918 #
6) T	MCPP	7.630	0.000	7537542	0	2.359	N.D. #
7) T	MCPA	7.701	0.000	74996319	0	16.488	N.D. #
8) T	DICHLORPROP	0.000	7.740	0	22786273	N.D.	40.356
9) T	2,4-D	8.399	0.000	122.8E6	0	108.759	N.D. #
11) T	2,4,5-TP ...	0.000	8.764	0	13087000	N.D.	4.476
12) T	2,4,5-T	9.411	0.000	14167337	0	2.391	N.D. #

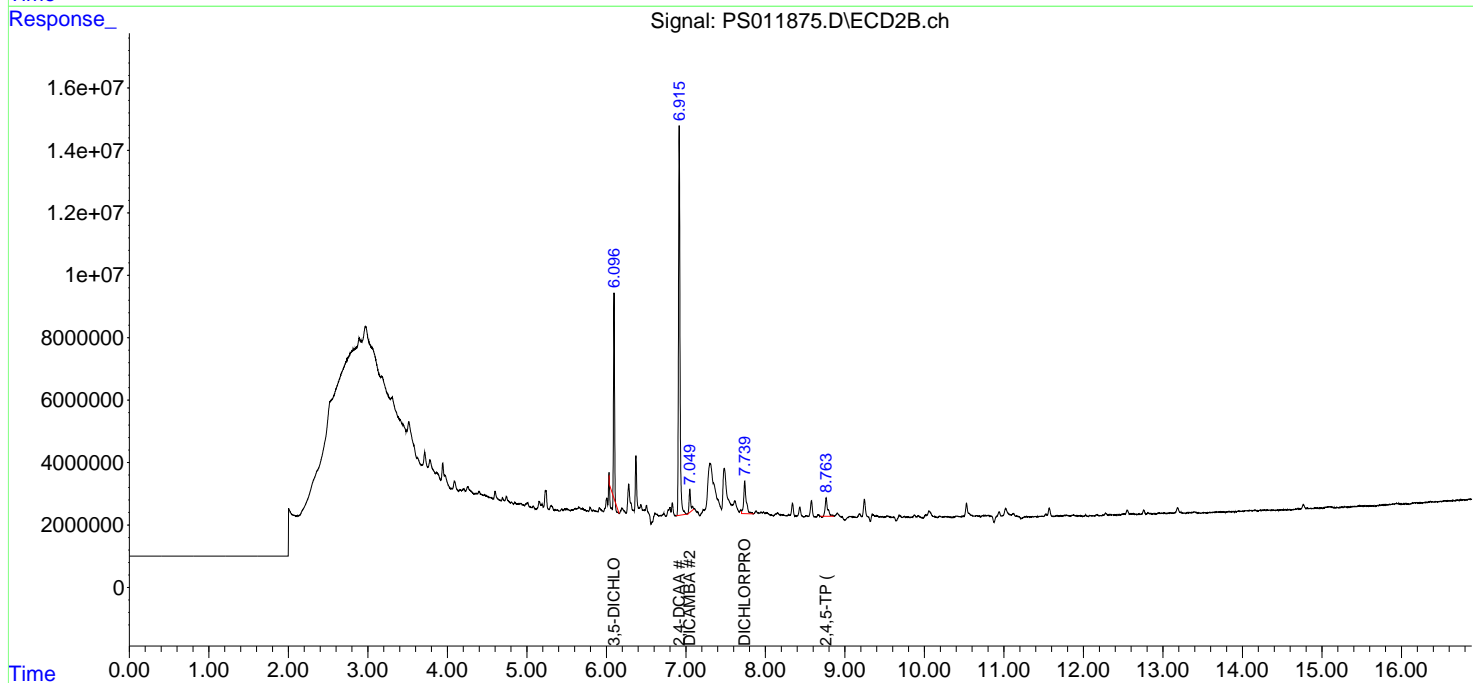
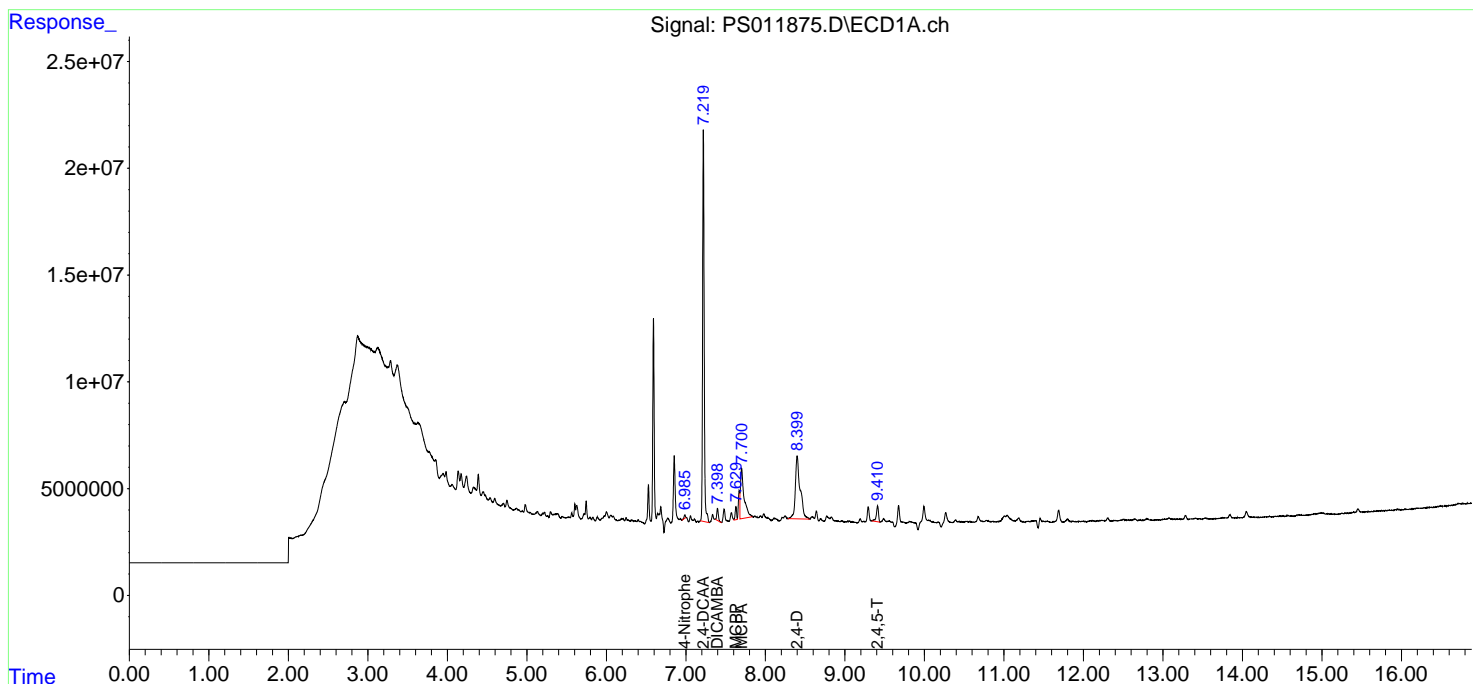
(f)=RT Delta > 1/2 Window (#)=Amounts differ by > 25% (m)=manual int.

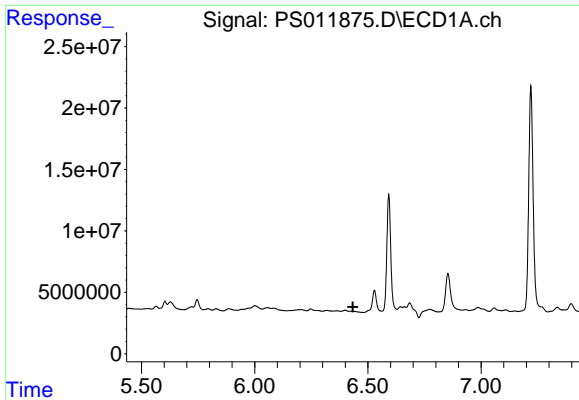
Data Path : Z:\pestpcbsrv\HPCHEM1\ECD_S\Data\PS082120\
 Data File : PS011875.D
 Signal(s) : Signal #1: ECD1A.ch Signal #2: ECD2B.ch
 Acq On : 21 Aug 2020 17:55
 Operator : DD\AJ
 Sample : PB131144TB
 Misc :
 ALS Vial : 7 Sample Multiplier: 1

Instrument :
 ECD_S
 ClientSampled :

Integration File signal 1: autoint1.e
 Integration File signal 2: autoint2.e
 Quant Time: Aug 21 18:15:07 2020
 Quant Method : Z:\pestpcbsrv\HPCHEM1\ECD_S\Method\PS081120.M
 Quant Title : 8080.M
 QLast Update : Tue Aug 11 15:43:16 2020
 Response via : Initial Calibration
 Integrator: ChemStation

Volume Inj. : 2 µl
 Signal #1 Phase : Rtx-CLPesticides Signal #2 Phase: Rtx-CLPesticides2
 Signal #1 Info : 30M x 0.32mm x0.5 Signal #2 Info : 30M x 0.32mm x 0.25µm

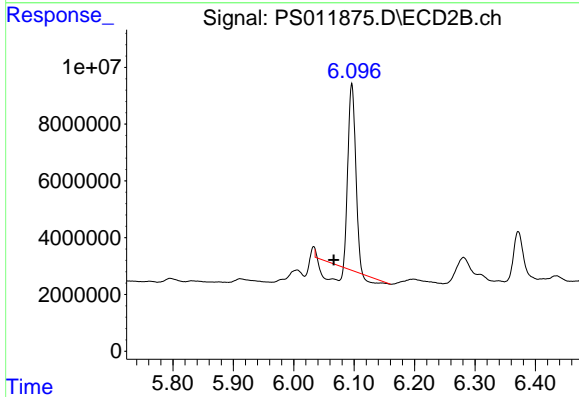




#2 3,5-DICHLORO BENZOIC ACID

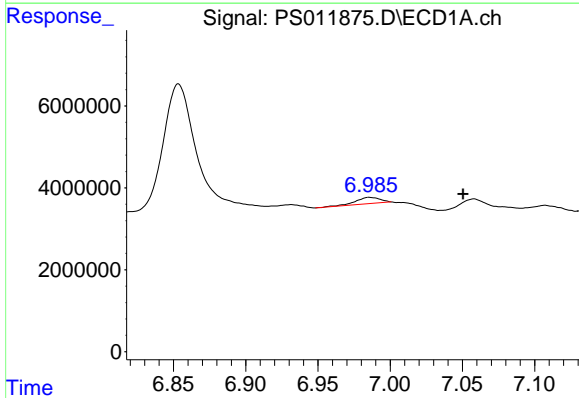
R.T.: 0.000 min
 Exp R.T.: 6.434 min
 Response: 0
 Conc: N.D.

Instrument :
 ECD_S
 ClientSampled :



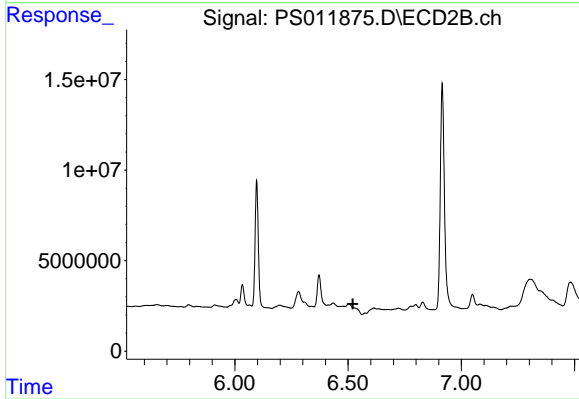
#2 3,5-DICHLORO BENZOIC ACID

R.T.: 6.096 min
 Delta R.T.: 0.030 min
 Response: 46822395
 Conc: 56.92 ng/ml



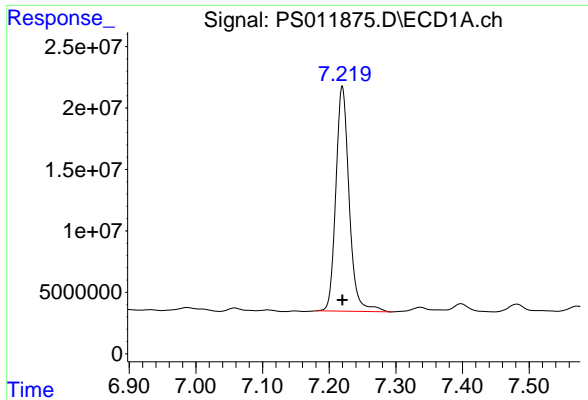
#3 4-Nitrophenol

R.T.: 6.986 min
 Delta R.T.: -0.065 min
 Response: 1819887
 Conc: 3.09 ng/ml



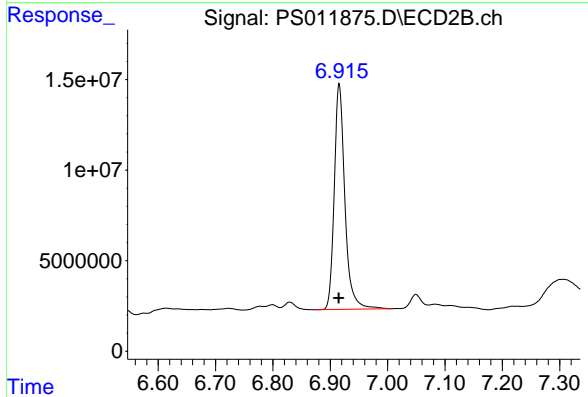
#3 4-Nitrophenol

R.T.: 0.000 min
 Exp R.T.: 6.521 min
 Response: 0
 Conc: N.D.

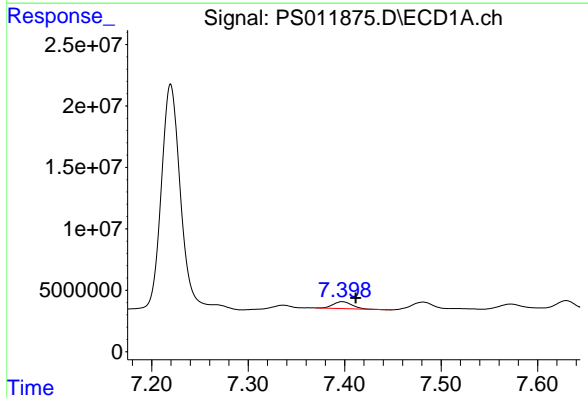


#4 2,4-DCAA
 R.T.: 7.220 min
 Delta R.T.: 0.000 min
 Response: 254252887
 Conc: 233.10 ng/ml

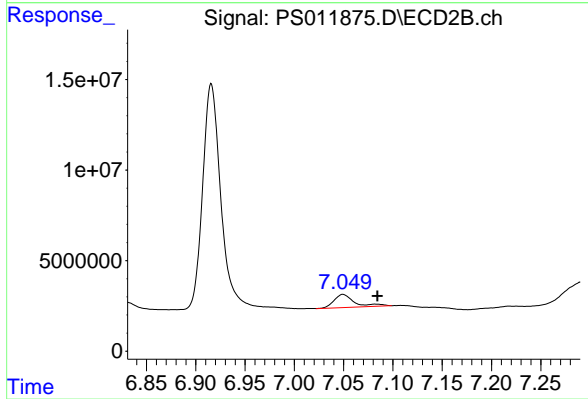
Instrument :
 ECD_S
 ClientSampled :



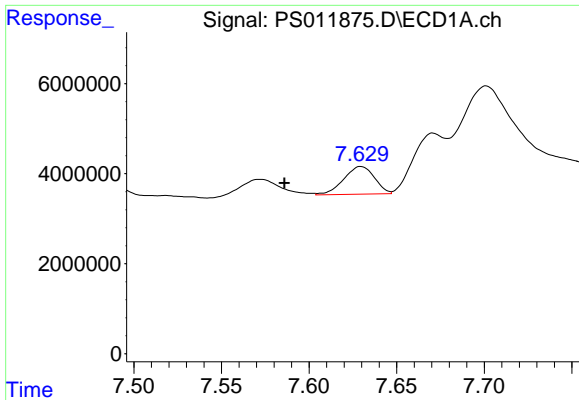
#4 2,4-DCAA
 R.T.: 6.916 min
 Delta R.T.: 0.000 min
 Response: 161498254
 Conc: 301.99 ng/ml



#5 DICAMBA
 R.T.: 7.397 min
 Delta R.T.: -0.014 min
 Response: 7676838
 Conc: 1.87 ng/ml



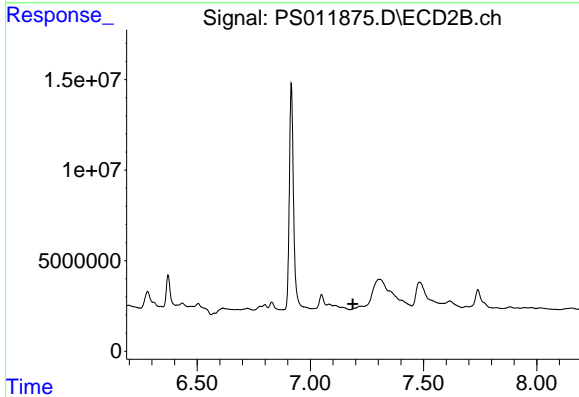
#5 DICAMBA
 R.T.: 7.049 min
 Delta R.T.: -0.035 min
 Response: 10624876
 Conc: 4.92 ng/ml



#6 MCP

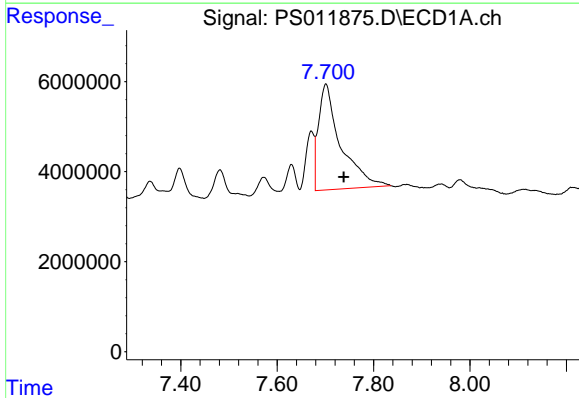
R.T.: 7.630 min
 Delta R.T.: 0.044 min
 Response: 7537542
 Conc: 2.36 ug/ml

Instrument :
 ECD_S
 ClientSampled :



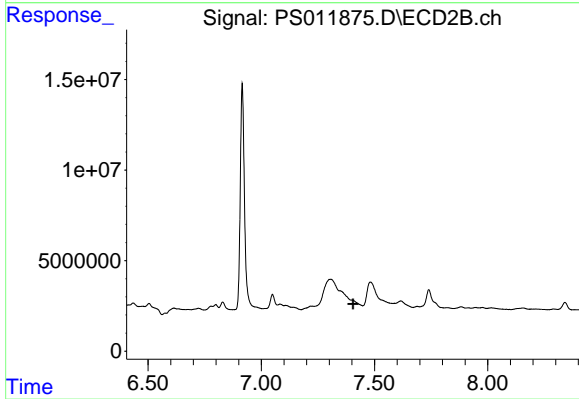
#6 MCP

R.T.: 0.000 min
 Exp R.T. : 7.188 min
 Response: 0
 Conc: N.D.



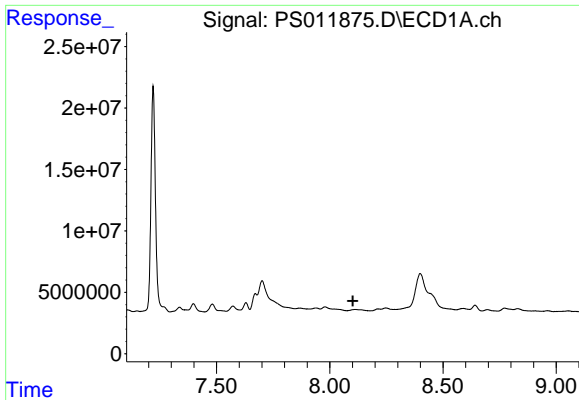
#7 MCPA

R.T.: 7.701 min
 Delta R.T.: -0.037 min
 Response: 74996319
 Conc: 16.49 ug/ml



#7 MCPA

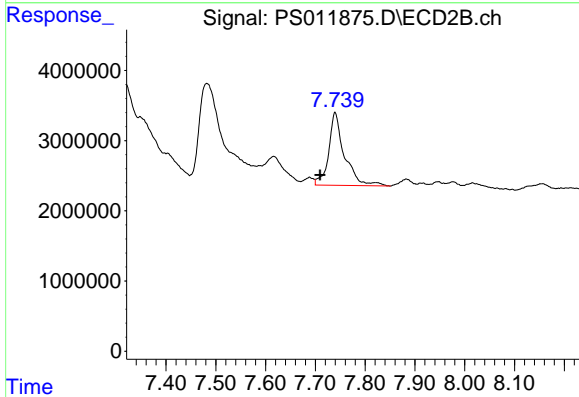
R.T.: 0.000 min
 Exp R.T. : 7.405 min
 Response: 0
 Conc: N.D.



#8 DICHLORPROP

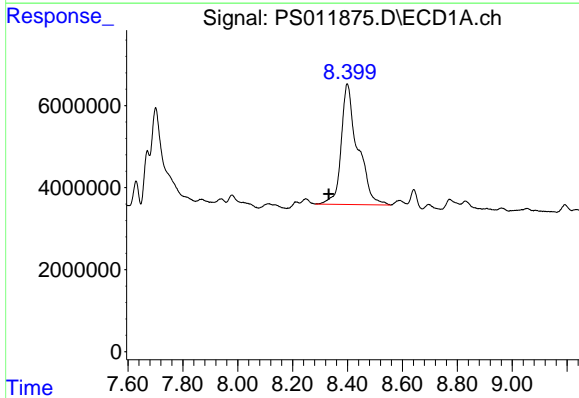
R.T.: 0.000 min
 Exp R.T. : 8.102 min
 Response: 0
 Conc: N.D.

Instrument :
 ECD_S
 ClientSampleId :



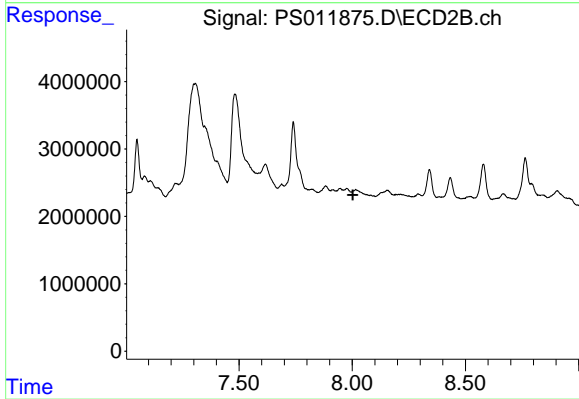
#8 DICHLORPROP

R.T.: 7.740 min
 Delta R.T.: 0.030 min
 Response: 22786273
 Conc: 40.36 ng/ml



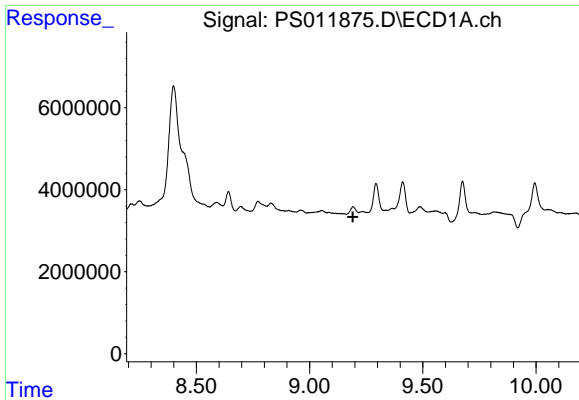
#9 2,4-D

R.T.: 8.399 min
 Delta R.T.: 0.067 min
 Response: 122798914
 Conc: 108.76 ng/ml



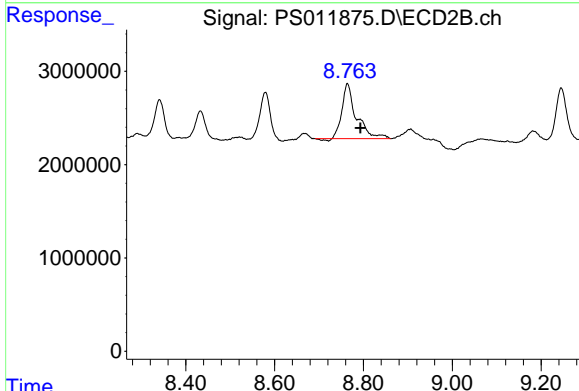
#9 2,4-D

R.T.: 0.000 min
 Exp R.T. : 8.003 min
 Response: 0
 Conc: N.D.

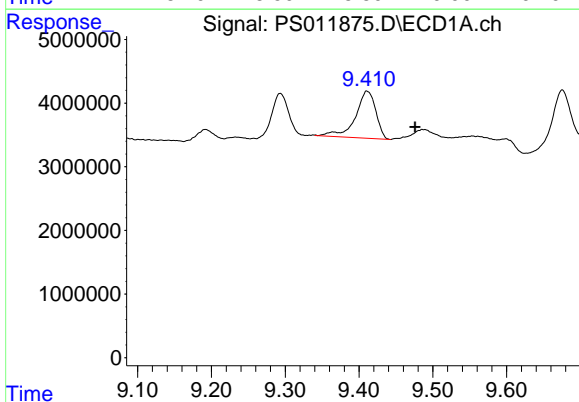


#11 2,4,5-TP (SILVEX)
 R.T.: 0.000 min
 Exp R.T.: 9.191 min
 Response: 0
 Conc: N.D.

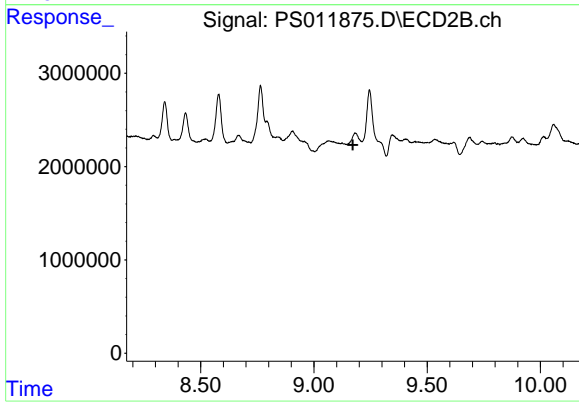
Instrument :
 ECD_S
 ClientSampleId :



#11 2,4,5-TP (SILVEX)
 R.T.: 8.764 min
 Delta R.T.: -0.029 min
 Response: 13087000
 Conc: 4.48 ng/ml



#12 2,4,5-T
 R.T.: 9.411 min
 Delta R.T.: -0.065 min
 Response: 14167337
 Conc: 2.39 ng/ml



#12 2,4,5-T
 R.T.: 0.000 min
 Exp R.T.: 9.172 min
 Response: 0
 Conc: N.D.