

Data Path : Z:\pestpcbsrv\HPCHEM1\ECD_S\Data\PS082321\
 Data File : PS016545.D
 Signal(s) : Signal #1: ECD1A.ch Signal #2: ECD2B.ch
 Acq On : 23 Aug 2021 09:07
 Operator : DD\AJ
 Sample : HEXANE
 Misc :
 ALS Vial : 1 Sample Multiplier: 1

Instrument :
 ECD_S
 ClientSampled :
 HEXANE

Integration File signal 1: autoint1.e
 Integration File signal 2: autoint2.e
 Quant Time: Aug 23 15:53:08 2021
 Quant Method : Z:\pestpcbsrv\HPCHEM1\ECD_S\Method\PS080221.M
 Quant Title : 8080.M
 QLast Update : Mon Aug 02 14:10:19 2021
 Response via : Initial Calibration
 Integrator: ChemStation

Volume Inj. : 2 µl
 Signal #1 Phase : Rtx-CLPesticides Signal #2 Phase: Rtx-CLPesticides2
 Signal #1 Info : 30M x 0.32mm x0.5 Signal #2 Info : 30M x 0.32mm x 0.25µm

Compound	RT#1	RT#2	Resp#1	Resp#2	ng/ml	ng/ml
----------	------	------	--------	--------	-------	-------

System Monitoring Compounds

Target Compounds

9) T	2,4-D	8.366f	0.000	79171738	0	52.356	N.D.	#
12) T	2,4,5-T	0.000	9.068f	0	2668807	N.D.	<MDL	
15) T	Picloram	10.998	10.830	25476580	13794318	2.553	3.426	#
16) T	DCPA	0.000	10.830f	0	13794318	N.D.	3.069	

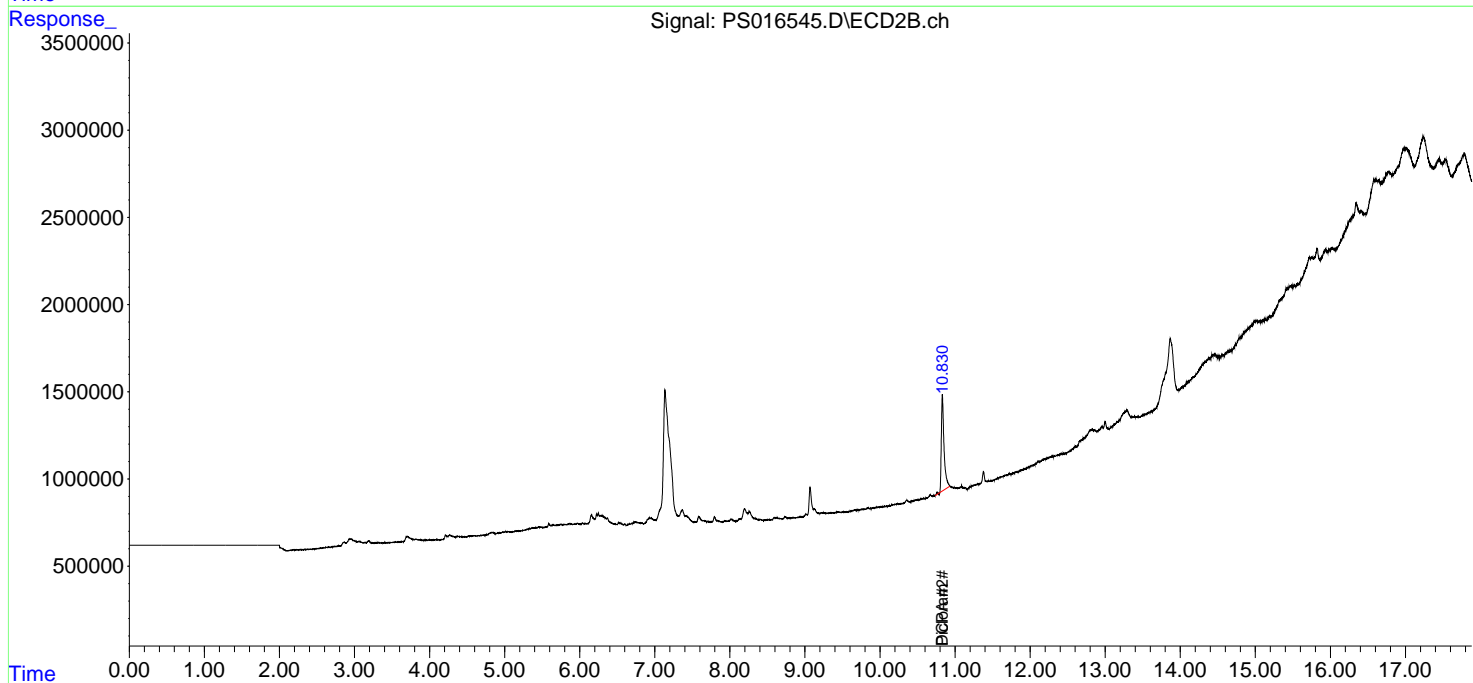
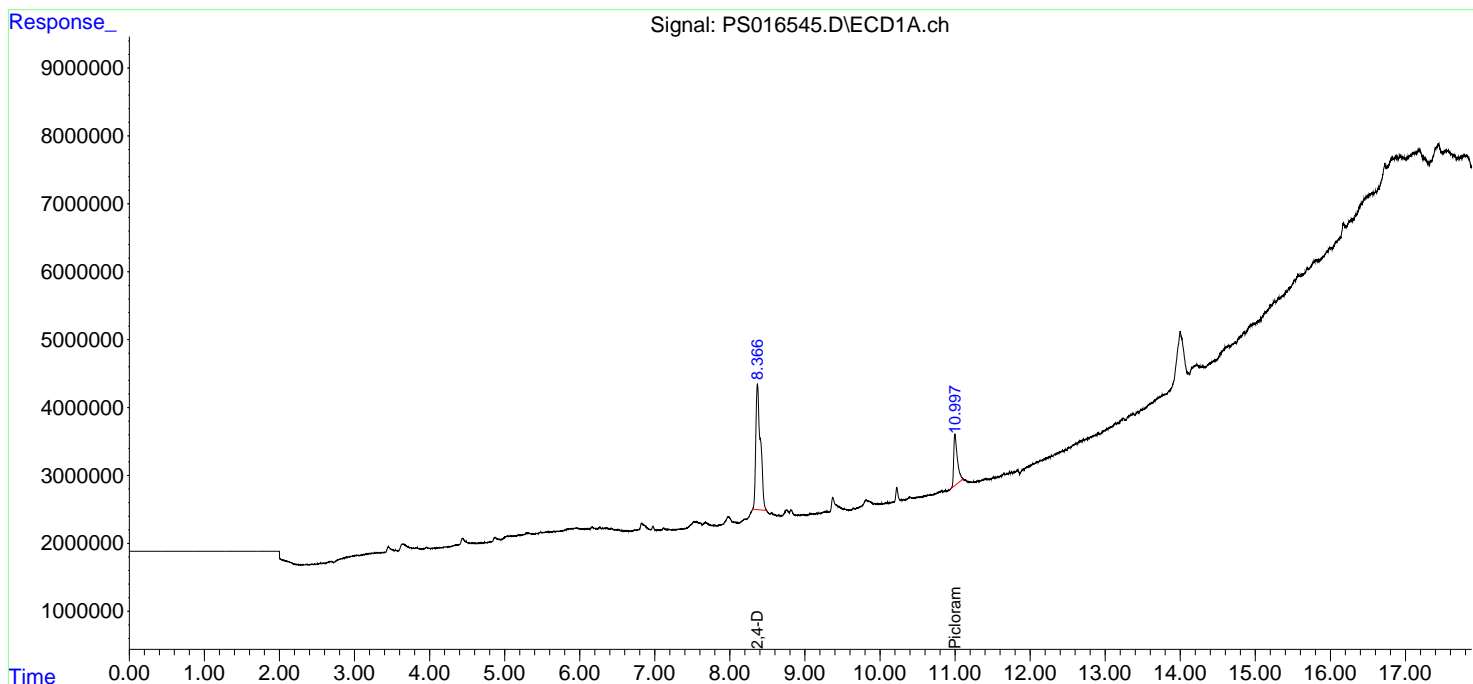
(f)=RT Delta > 1/2 Window (#)=Amounts differ by > 25% (m)=manual int.

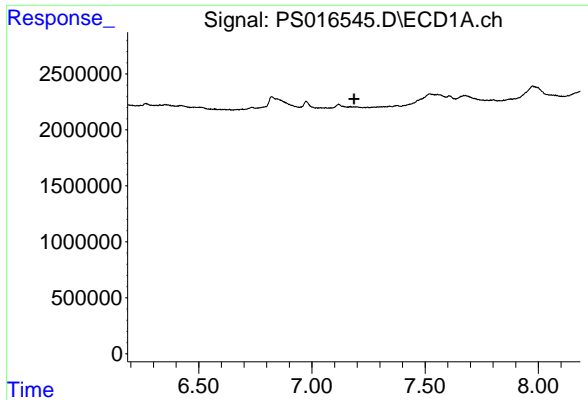
Data Path : Z:\pestpcbsrv\HPCHEM1\ECD_S\Data\PS082321\
 Data File : PS016545.D
 Signal(s) : Signal #1: ECD1A.ch Signal #2: ECD2B.ch
 Acq On : 23 Aug 2021 09:07
 Operator : DD\AJ
 Sample : HEXANE
 Misc :
 ALS Vial : 1 Sample Multiplier: 1

Instrument :
 ECD_S
 ClientSampleId :
 HEXANE

Integration File signal 1: autoint1.e
 Integration File signal 2: autoint2.e
 Quant Time: Aug 23 15:53:08 2021
 Quant Method : Z:\pestpcbsrv\HPCHEM1\ECD_S\Method\PS080221.M
 Quant Title : 8080.M
 QLast Update : Mon Aug 02 14:10:19 2021
 Response via : Initial Calibration
 Integrator: ChemStation

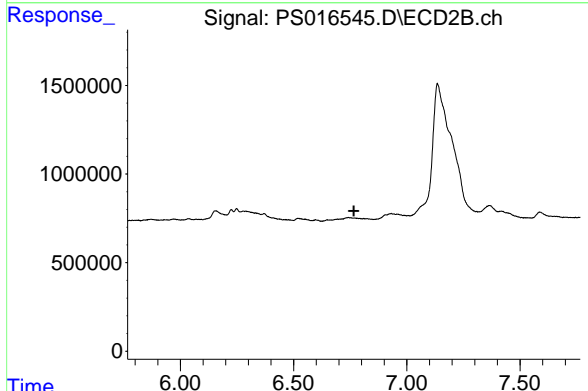
Volume Inj. : 2 µl
 Signal #1 Phase : Rtx-CLPesticides Signal #2 Phase: Rtx-CLPesticides2
 Signal #1 Info : 30M x 0.32mm x 0.5 Signal #2 Info : 30M x 0.32mm x 0.25µm



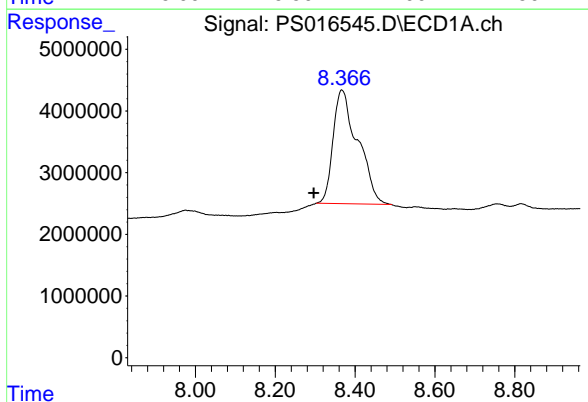


#4 2,4-DCAA
 R.T.: 0.000 min
 Exp R.T. : 7.186 min
 Response: 0
 Conc: N.D.

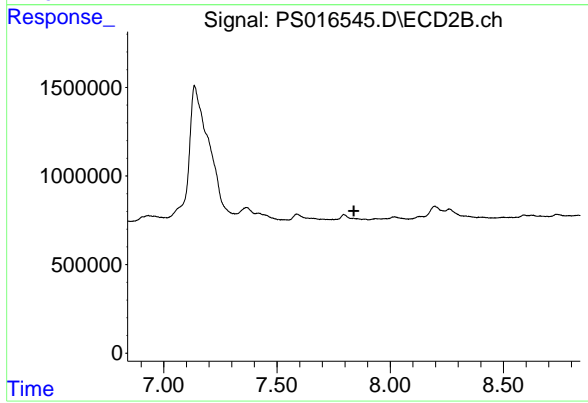
Instrument :
 ECD_S
 ClientSampled :
 HEXANE



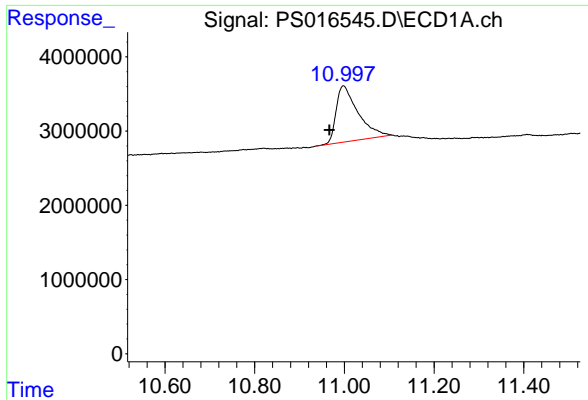
#4 2,4-DCAA
 R.T.: 0.000 min
 Exp R.T. : 6.766 min
 Response: 0
 Conc: N.D.



#9 2,4-D
 R.T.: 8.366 min
 Delta R.T.: 0.069 min
 Response: 79171738
 Conc: 52.36 ng/ml

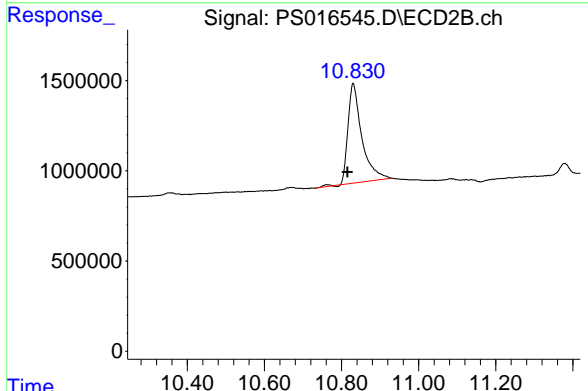


#9 2,4-D
 R.T.: 0.000 min
 Exp R.T. : 7.839 min
 Response: 0
 Conc: N.D.

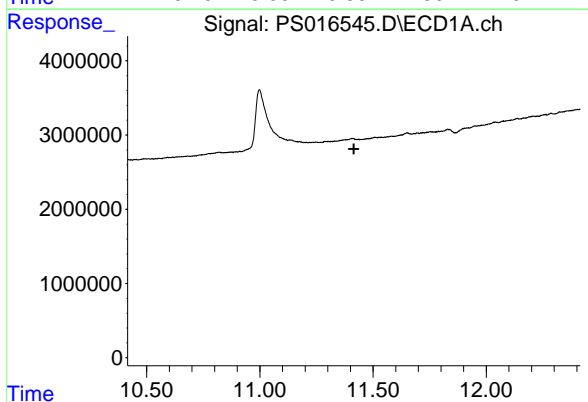


#15 Picloram
 R.T.: 10.998 min
 Delta R.T.: 0.031 min
 Response: 25476580
 Conc: 2.55 ng/ml

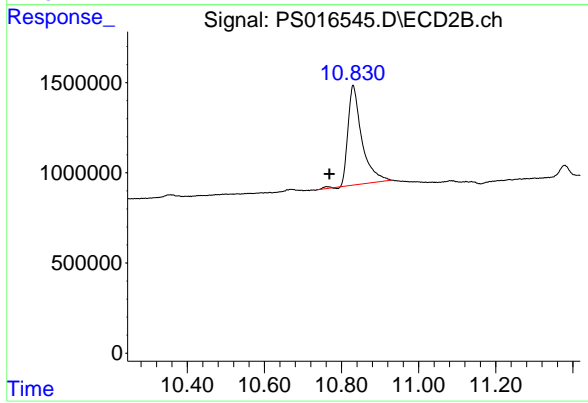
Instrument :
 ECD_S
 ClientSampleId :
 HEXANE



#15 Picloram
 R.T.: 10.830 min
 Delta R.T.: 0.014 min
 Response: 13794318
 Conc: 3.43 ng/ml



#16 DCPA
 R.T.: 0.000 min
 Exp R.T. : 11.415 min
 Response: 0
 Conc: N.D.



#16 DCPA
 R.T.: 10.830 min
 Delta R.T.: 0.062 min
 Response: 13794318
 Conc: 3.07 ng/ml