

Data Path : Z:\pestpcbsrv\HPCHEM1\ECD\_S\Data\PS082321\  
 Data File : PS016546.D  
 Signal(s) : Signal #1: ECD1A.ch Signal #2: ECD2B.ch  
 Acq On : 23 Aug 2021 09:31  
 Operator : DD\AJ  
 Sample : I.BLK  
 Misc :  
 ALS Vial : 2 Sample Multiplier: 1

Instrument :  
 ECD\_S  
 ClientSampleId :

Integration File signal 1: autoint1.e  
 Integration File signal 2: autoint2.e  
 Quant Time: Aug 23 16:08:01 2021  
 Quant Method : Z:\pestpcbsrv\HPCHEM1\ECD\_S\Method\PS080221.M  
 Quant Title : 8080.M  
 QLast Update : Mon Aug 02 14:10:19 2021  
 Response via : Initial Calibration  
 Integrator: ChemStation

Volume Inj. : 2 µl  
 Signal #1 Phase : Rtx-CLPesticides Signal #2 Phase: Rtx-CLPesticides2  
 Signal #1 Info : 30M x 0.32mm x0.5 Signal #2 Info : 30M x 0.32mm x 0.25µm

Compound	RT#1	RT#2	Resp#1	Resp#2	ng/ml	ng/ml
-----						
System Monitoring Compounds						
4) S 2,4-DCAA	7.185	6.764	625.9E6	245.3E6	425.471	470.245
Target Compounds						
15) T Picloram	11.019f	10.841	16799898	10395850	1.683	2.582 #
-----						

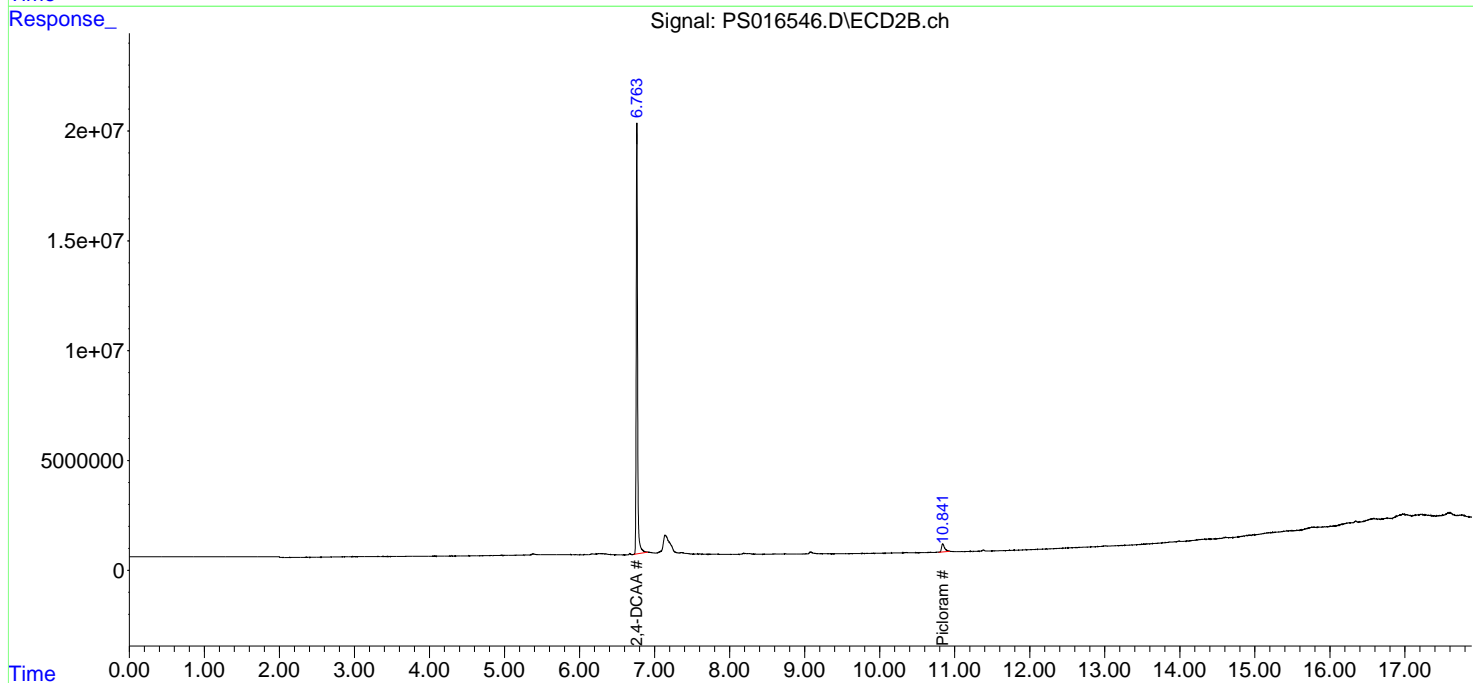
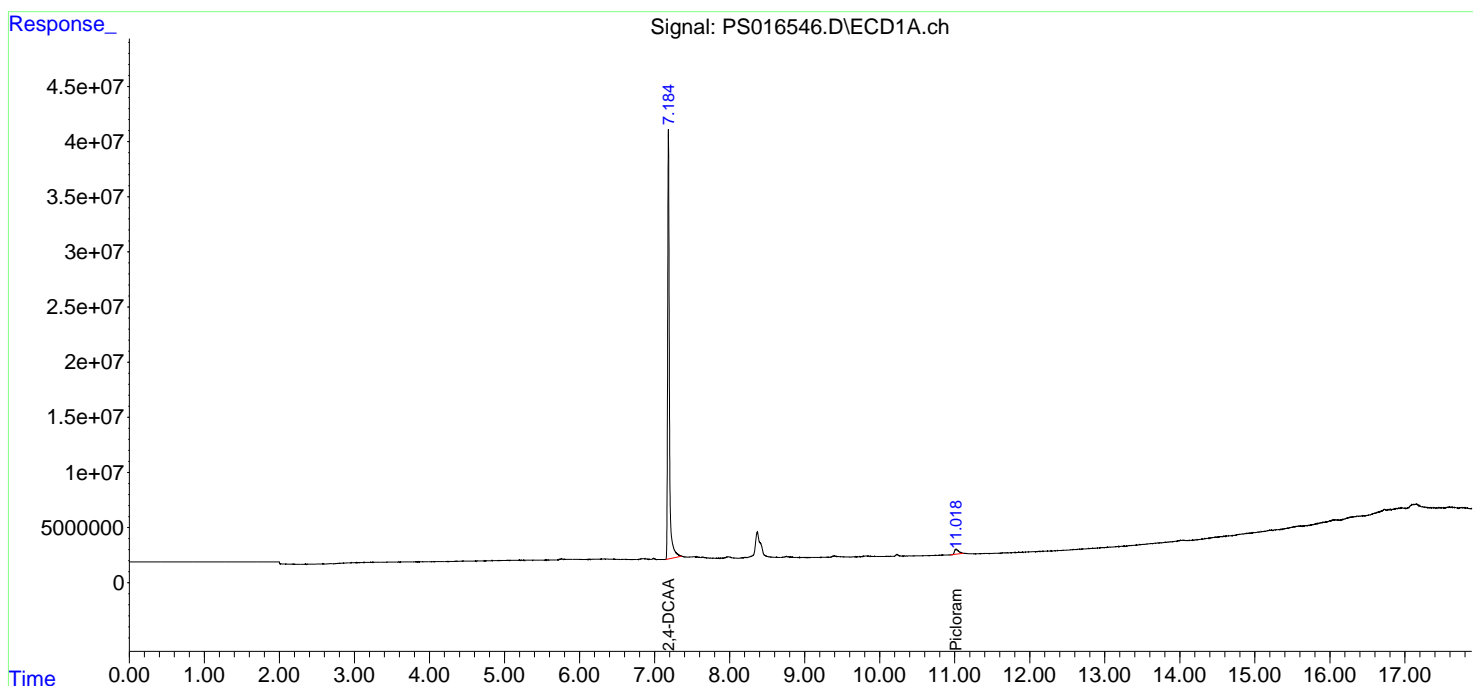
(f)=RT Delta > 1/2 Window (#)=Amounts differ by > 25% (m)=manual int.

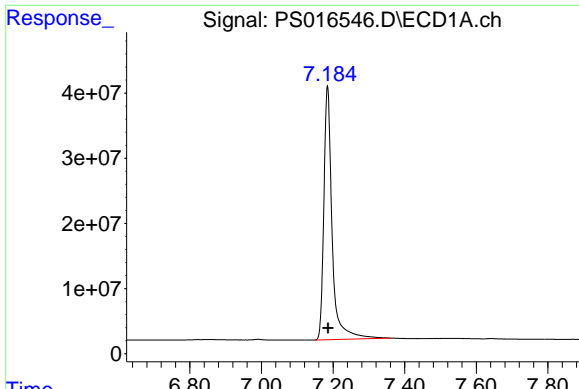
Data Path : Z:\pestpcbsrv\HPCHEM1\ECD\_S\Data\PS082321\  
Data File : PS016546.D  
Signal(s) : Signal #1: ECD1A.ch Signal #2: ECD2B.ch  
Acq On : 23 Aug 2021 09:31  
Operator : DD\AJ  
Sample : I.BLK  
Misc :  
ALS Vial : 2 Sample Multiplier: 1

Instrument :  
ECD\_S  
ClientSampled :

Integration File signal 1: autoint1.e  
Integration File signal 2: autoint2.e  
Quant Time: Aug 23 16:08:01 2021  
Quant Method : Z:\pestpcbsrv\HPCHEM1\ECD\_S\Method\PS080221.M  
Quant Title : 8080.M  
QLast Update : Mon Aug 02 14:10:19 2021  
Response via : Initial Calibration  
Integrator: ChemStation

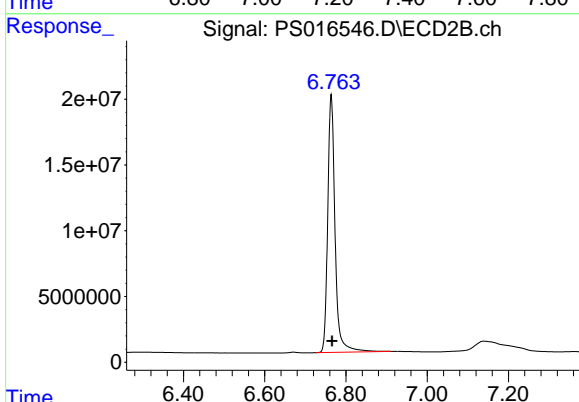
Volume Inj. : 2 µl  
Signal #1 Phase : Rtx-CLPesticides Signal #2 Phase: Rtx-CLPesticides2  
Signal #1 Info : 30M x 0.32mm x0.5 Signal #2 Info : 30M x 0.32mm x 0.25µm



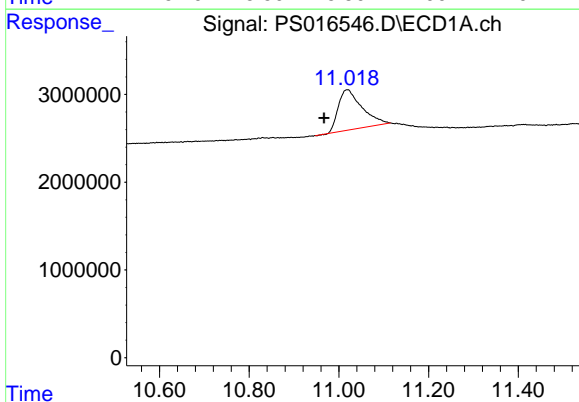


#4 2,4-DCAA  
 R.T.: 7.185 min  
 Delta R.T.: -0.001 min  
 Response: 625913386  
 Conc: 425.47 ng/ml

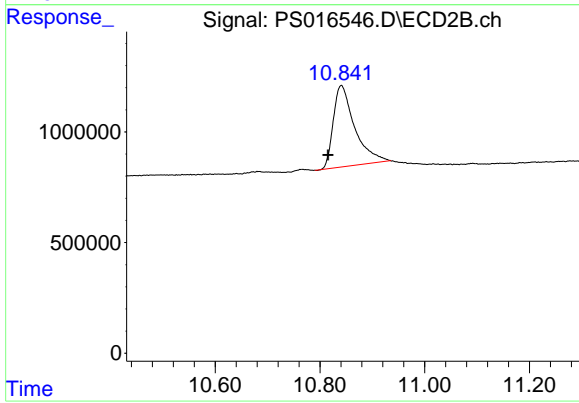
Instrument :  
 ECD\_S  
 ClientSampleId :



#4 2,4-DCAA  
 R.T.: 6.764 min  
 Delta R.T.: -0.002 min  
 Response: 245291350  
 Conc: 470.25 ng/ml



#15 Picloram  
 R.T.: 11.019 min  
 Delta R.T.: 0.052 min  
 Response: 16799898  
 Conc: 1.68 ng/ml



#15 Picloram  
 R.T.: 10.841 min  
 Delta R.T.: 0.025 min  
 Response: 10395850  
 Conc: 2.58 ng/ml