

Data Path : Z:\pestpcbsrv\HPCHEM1\ECD_S\Data\PS082321\
 Data File : PS016548.D
 Signal(s) : Signal #1: ECD1A.ch Signal #2: ECD2B.ch
 Acq On : 23 Aug 2021 10:20
 Operator : DD\AJ
 Sample : PB138602BL
 Misc :
 ALS Vial : 4 Sample Multiplier: 1

Instrument :
 ECD_S
 ClientSampleId :
 PB138602BL

Integration File signal 1: autoint1.e
 Integration File signal 2: autoint2.e
 Quant Time: Aug 23 16:19:12 2021
 Quant Method : Z:\pestpcbsrv\HPCHEM1\ECD_S\Method\PS080221.M
 Quant Title : 8080.M
 QLast Update : Mon Aug 02 14:10:19 2021
 Response via : Initial Calibration
 Integrator: ChemStation

Volume Inj. : 2 µl
 Signal #1 Phase : Rtx-CLPesticides Signal #2 Phase: Rtx-CLPesticides2
 Signal #1 Info : 30M x 0.32mm x0.5 Signal #2 Info : 30M x 0.32mm x 0.25µm

	Compound	RT#1	RT#2	Resp#1	Resp#2	ng/ml	ng/ml

System Monitoring Compounds							
4) S	2,4-DCAA	7.182	6.763	781.3E6	303.3E6	531.071	581.475
Target Compounds							
1) T	Dalapon	2.972f	2.481	31090578	55681298	15.410	79.928 #
2) T	3,5-DICHL...	6.340f	5.980	4810034	47336823	2.285	59.946 #
6) T	MCP	7.592	7.030	13980586	1610236	3.304	<MDL #
7) T	MCPA	7.731	7.222	15893716	16616402	2.580	6.096 #
8) T	DICHLORPROP	0.000	7.566	0	6247549	N.D.	11.532
9) T	2,4-D	0.000	7.822	0	9910708	N.D.	15.643
10) T	Pentachlo...	8.603	8.263	18021016	19270622	<MDL	2.601 #
11) T	2,4,5-TP ...	9.151	8.657	10081481	50294778	1.394	17.237 #
12) T	2,4,5-T	9.440	9.006	20633335	7058580	2.707	2.437
13) T	2,4-DB	9.965	9.518	20206015	3511628	13.902	9.283 #
14) T	DINOSEB	11.110	9.838	187.9E6	24399886	35.635	11.976 #
15) T	Picloram	10.973	10.817	204.8E6	115.9E6	20.522	28.783 #
16) T	DCPA	11.417	10.763	14076235	11006399	1.332	2.449 #

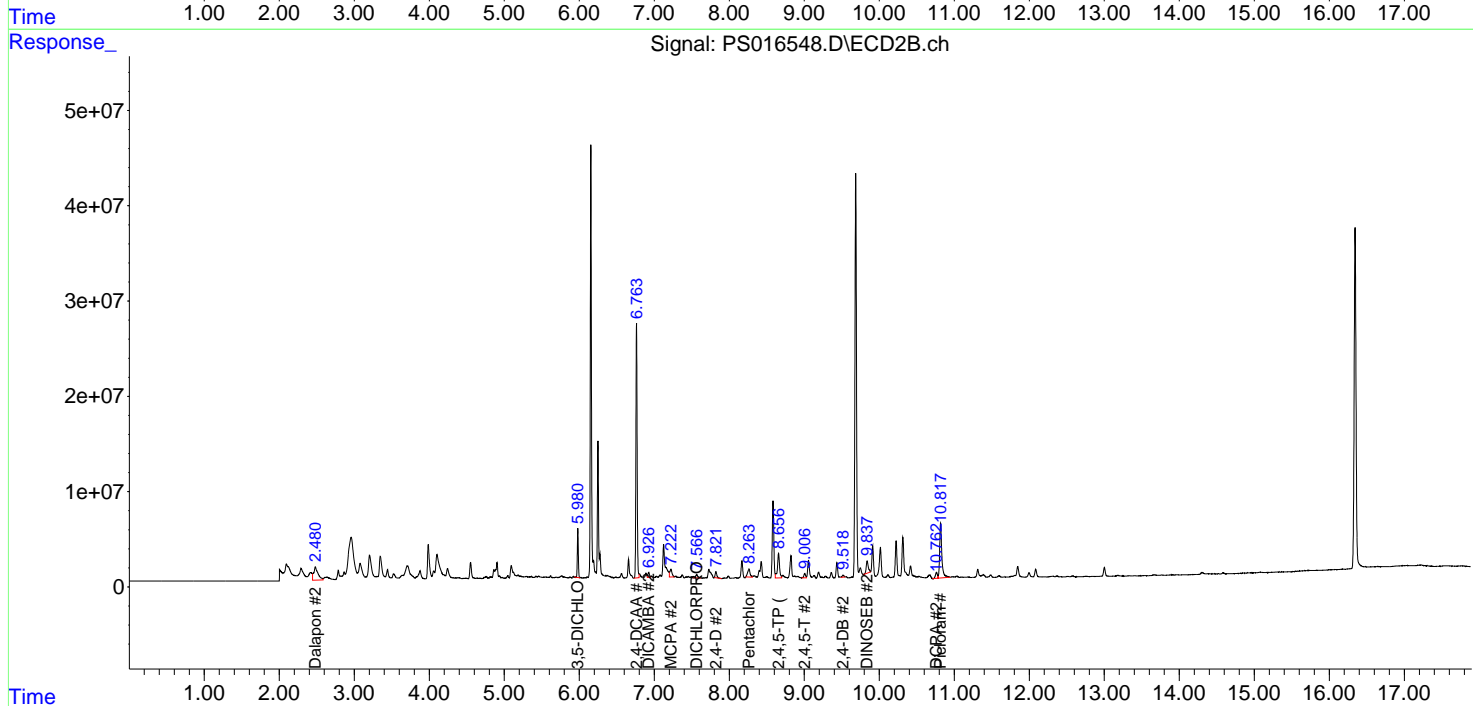
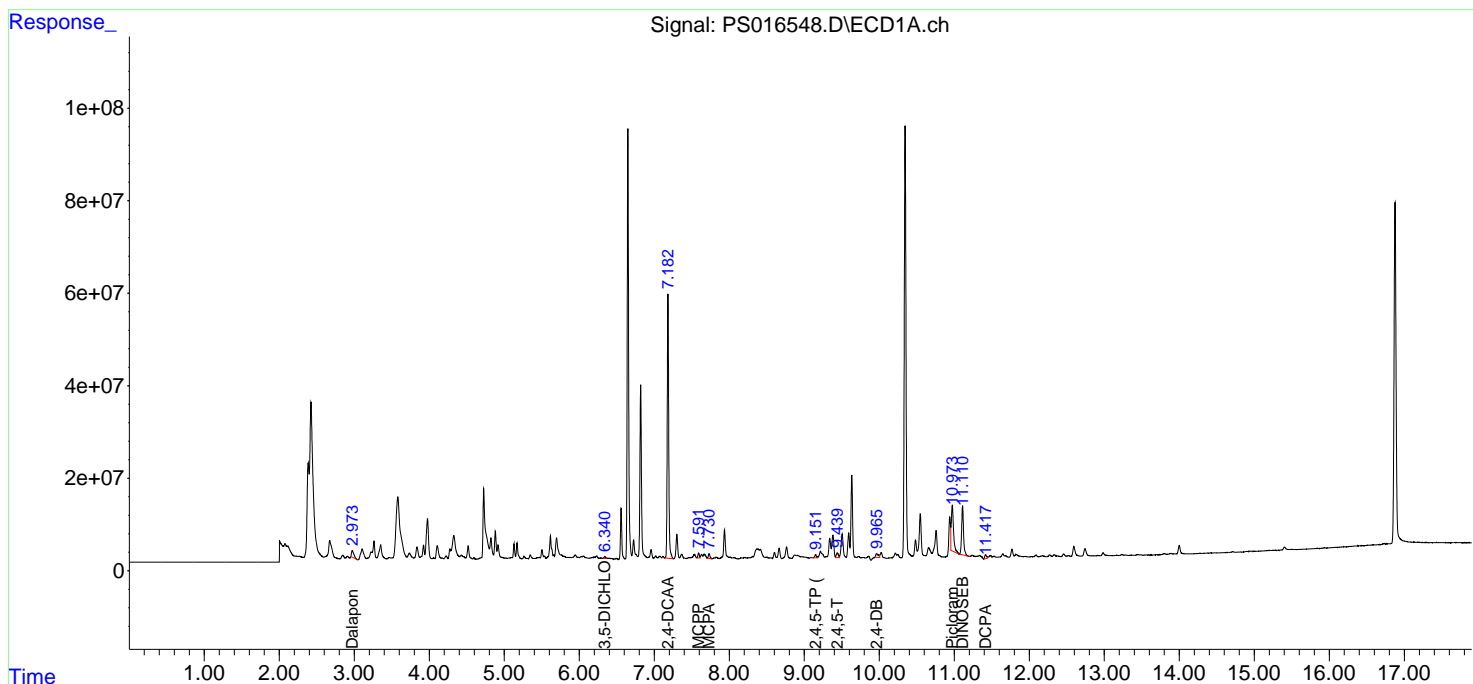
(f)=RT Delta > 1/2 Window (#)=Amounts differ by > 25% (m)=manual int.

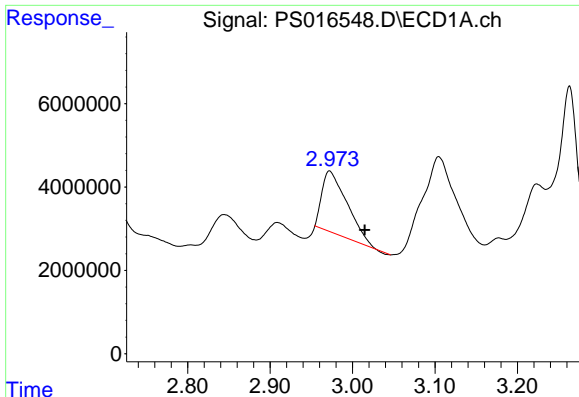
Data Path : Z:\pestpcbsrv\HPCHEM1\ECD_S\Data\PS082321\
 Data File : PS016548.D
 Signal(s) : Signal #1: ECD1A.ch Signal #2: ECD2B.ch
 Acq On : 23 Aug 2021 10:20
 Operator : DD\AJ
 Sample : PB138602BL
 Misc :
 ALS Vial : 4 Sample Multiplier: 1

Instrument :
 ECD_S
 ClientSampled :
 PB138602BL

Integration File signal 1: autoint1.e
 Integration File signal 2: autoint2.e
 Quant Time: Aug 23 16:19:12 2021
 Quant Method : Z:\pestpcbsrv\HPCHEM1\ECD_S\Method\PS080221.M
 Quant Title : 8080.M
 QLast Update : Mon Aug 02 14:10:19 2021
 Response via : Initial Calibration
 Integrator: ChemStation

Volume Inj. : 2 µl
 Signal #1 Phase : Rtx-CLPesticides Signal #2 Phase: Rtx-CLPesticides2
 Signal #1 Info : 30M x 0.32mm x0.5 Signal #2 Info : 30M x 0.32mm x 0.25µm

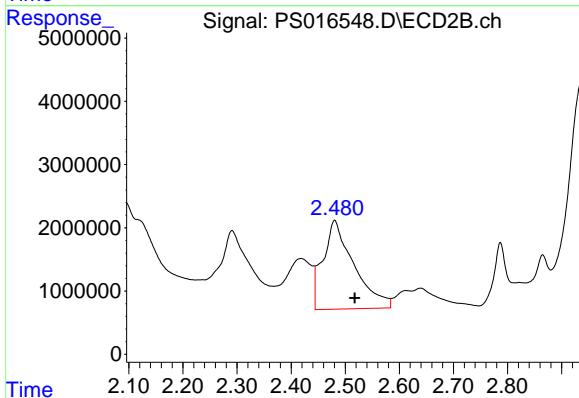




#1 Dalapon

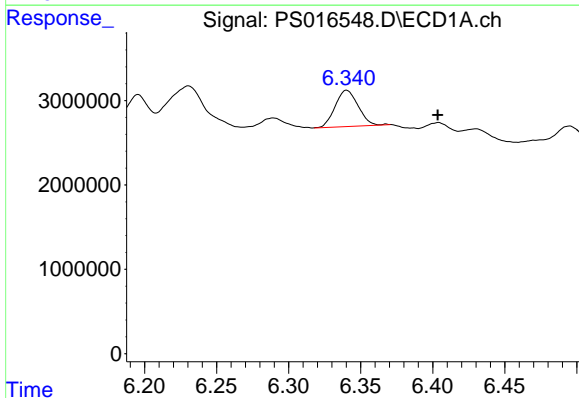
R.T.: 2.972 min
 Delta R.T.: -0.043 min
 Response: 31090578
 Conc: 15.41 ng/ml

Instrument :
 ECD_S
 ClientSampleId :
 PB138602BL



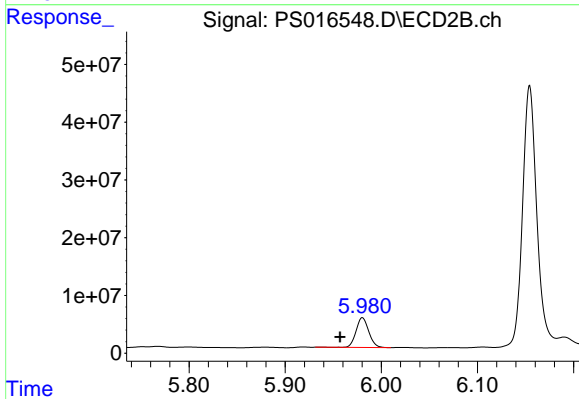
#1 Dalapon

R.T.: 2.481 min
 Delta R.T.: -0.037 min
 Response: 55681298
 Conc: 79.93 ng/ml



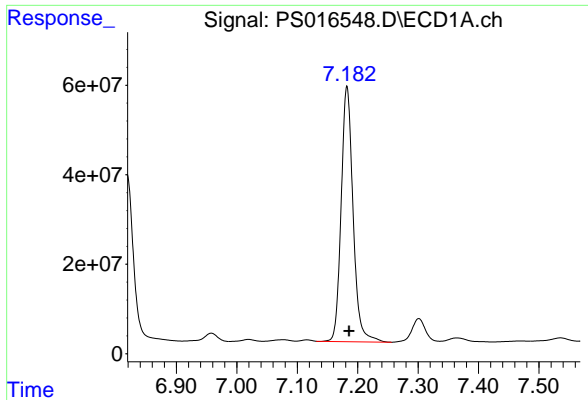
#2 3,5-DICHLOROBENZOIC ACID

R.T.: 6.340 min
 Delta R.T.: -0.063 min
 Response: 4810034
 Conc: 2.28 ng/ml



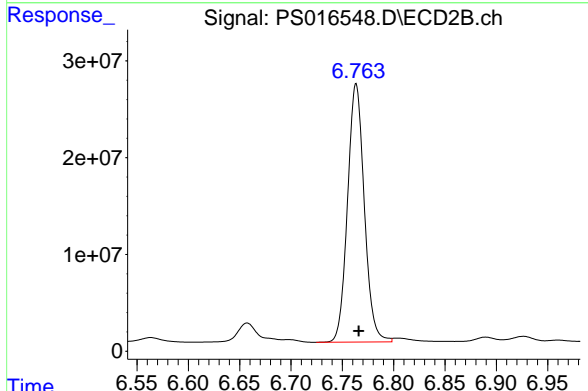
#2 3,5-DICHLOROBENZOIC ACID

R.T.: 5.980 min
 Delta R.T.: 0.023 min
 Response: 47336823
 Conc: 59.95 ng/ml

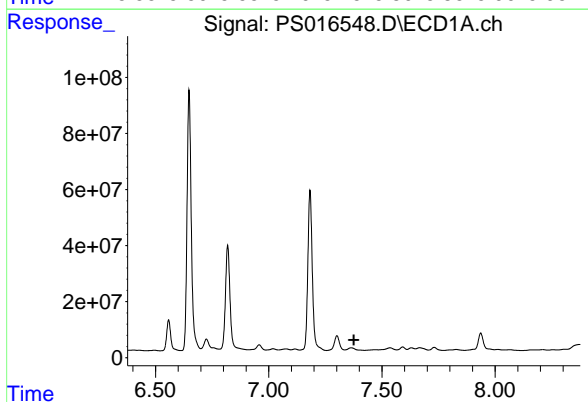


#4 2,4-DCAA
 R.T.: 7.182 min
 Delta R.T.: -0.003 min
 Response: 781261881
 Conc: 531.07 ng/ml

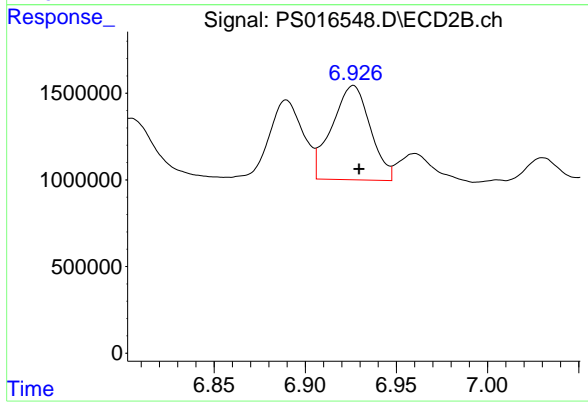
Instrument :
 ECD_S
 ClientSampleId :
 PB138602BL



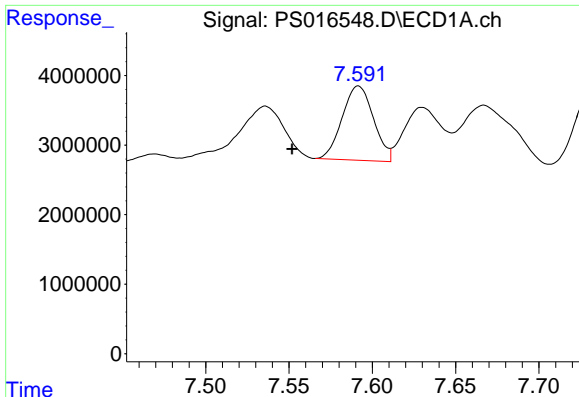
#4 2,4-DCAA
 R.T.: 6.763 min
 Delta R.T.: -0.002 min
 Response: 303311442
 Conc: 581.47 ng/ml



#5 DICAMBA
 R.T.: 7.364 min
 Delta R.T.: -0.013 min
 Response: -55132146
 Conc: N.D.



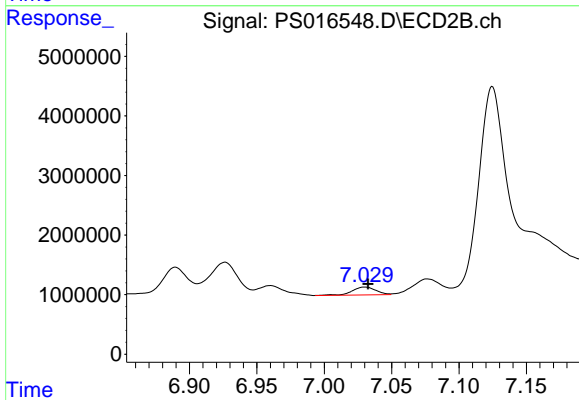
#5 DICAMBA
 R.T.: 6.926 min
 Delta R.T.: -0.003 min
 Response: 7975422
 Conc: 3.66 ng/ml



#6 MCPP

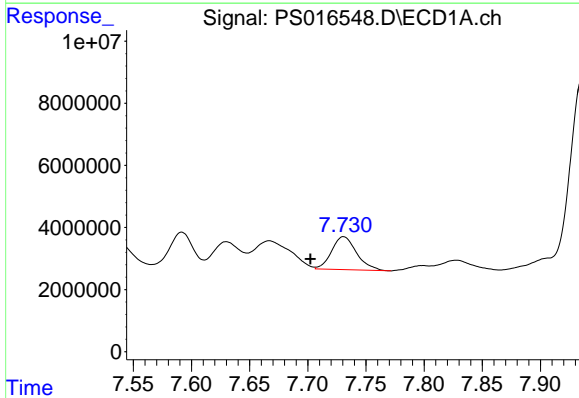
R.T.: 7.592 min
 Delta R.T.: 0.040 min
 Response: 13980586
 Conc: 3.30 ug/ml

Instrument :
 ECD_S
 ClientSampled :
 PB138602BL



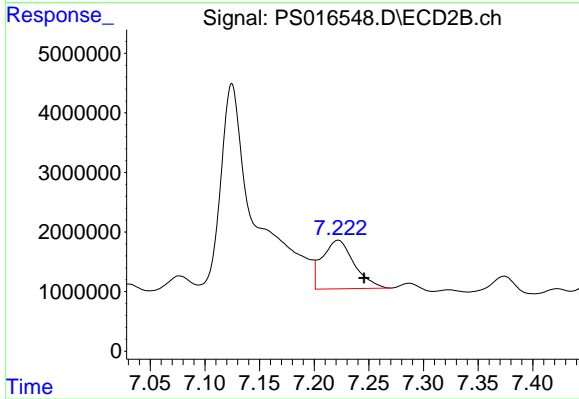
#6 MCPP

R.T.: 7.030 min
 Delta R.T.: -0.002 min
 Response: 1610236
 Conc: N.D.



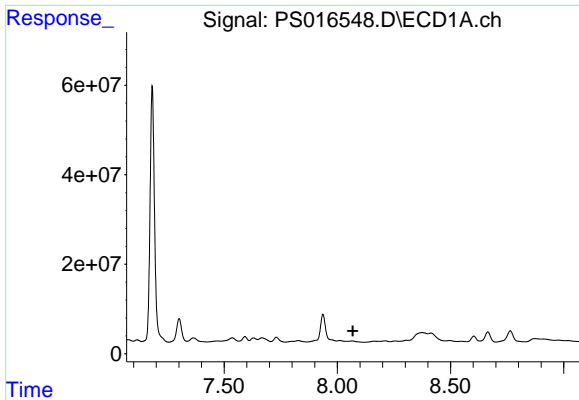
#7 MCPA

R.T.: 7.731 min
 Delta R.T.: 0.029 min
 Response: 15893716
 Conc: 2.58 ug/ml



#7 MCPA

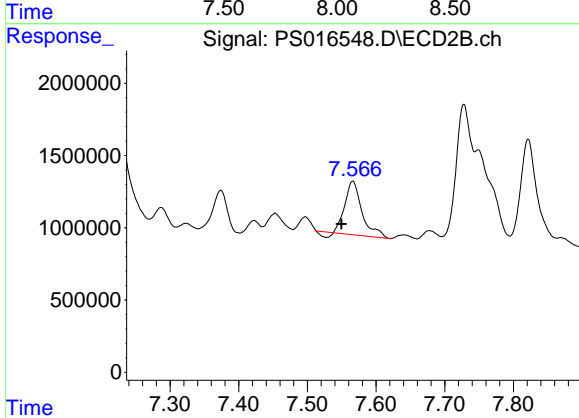
R.T.: 7.222 min
 Delta R.T.: -0.024 min
 Response: 16616402
 Conc: 6.10 ug/ml



#8 DICHLORPROP

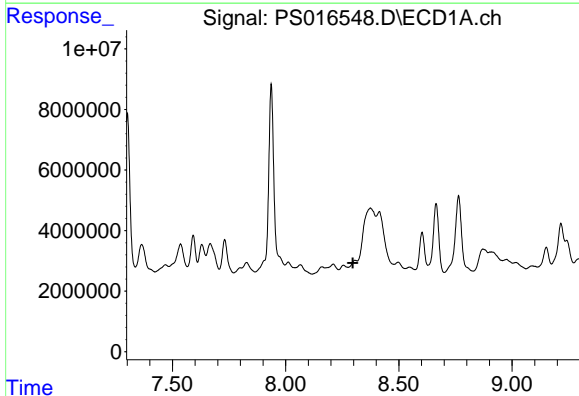
R.T.: 0.000 min
 Exp R.T. : 8.069 min
 Response: 0
 Conc: N.D.

Instrument :
 ECD_S
 ClientSampleId :
 PB138602BL



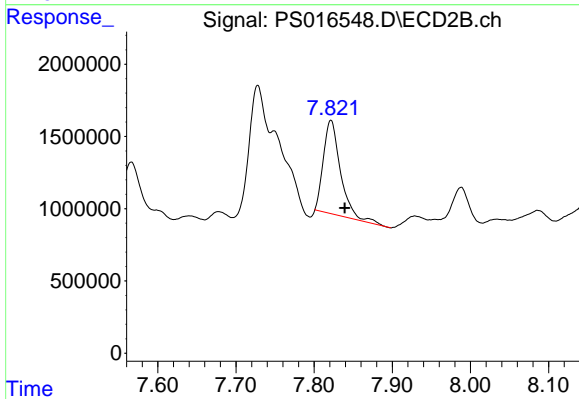
#8 DICHLORPROP

R.T.: 7.566 min
 Delta R.T.: 0.017 min
 Response: 6247549
 Conc: 11.53 ng/ml



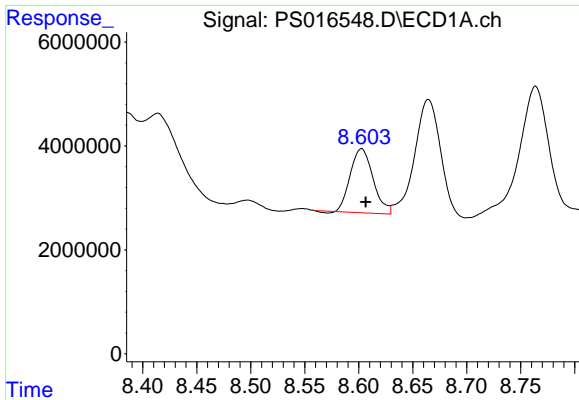
#9 2,4-D

R.T.: 0.000 min
 Exp R.T. : 8.297 min
 Response: 0
 Conc: N.D.



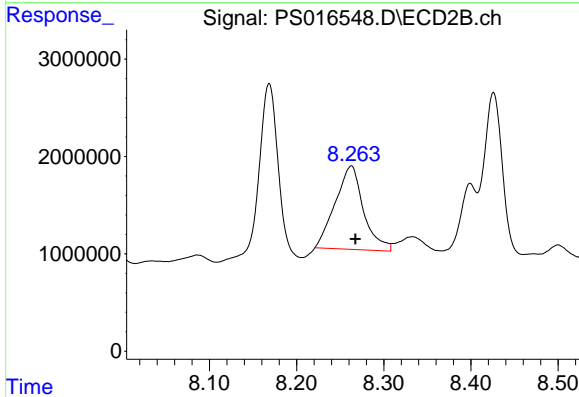
#9 2,4-D

R.T.: 7.822 min
 Delta R.T.: -0.018 min
 Response: 9910708
 Conc: 15.64 ng/ml

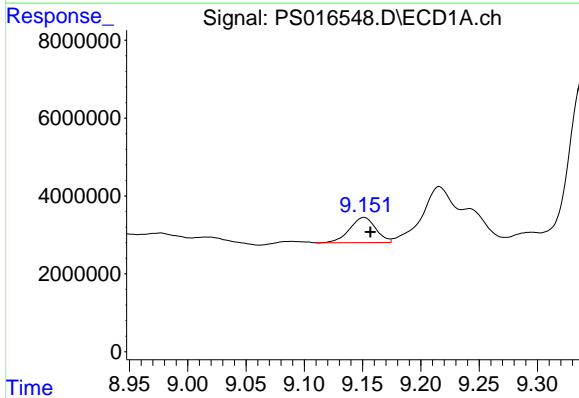


#10 Pentachlorophenol
 R.T.: 8.603 min
 Delta R.T.: -0.004 min
 Response: 18021016
 Conc: N.D.

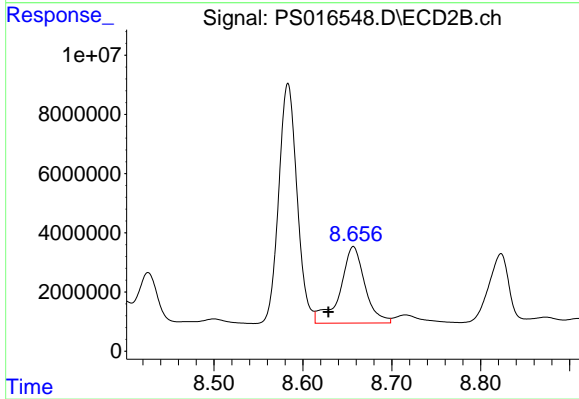
Instrument :
 ECD_S
 ClientSampleId :
 PB138602BL



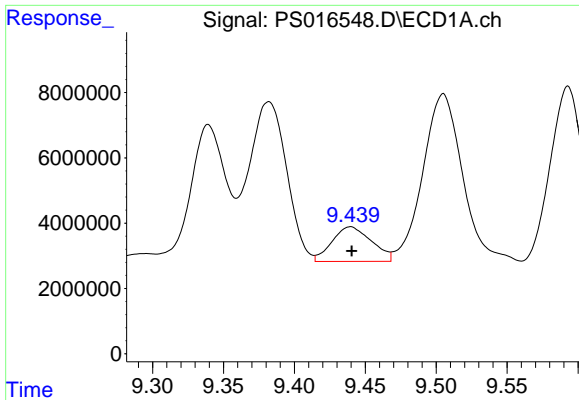
#10 Pentachlorophenol
 R.T.: 8.263 min
 Delta R.T.: -0.005 min
 Response: 19270622
 Conc: 2.60 ng/ml



#11 2,4,5-TP (SILVEX)
 R.T.: 9.151 min
 Delta R.T.: -0.006 min
 Response: 10081481
 Conc: 1.39 ng/ml



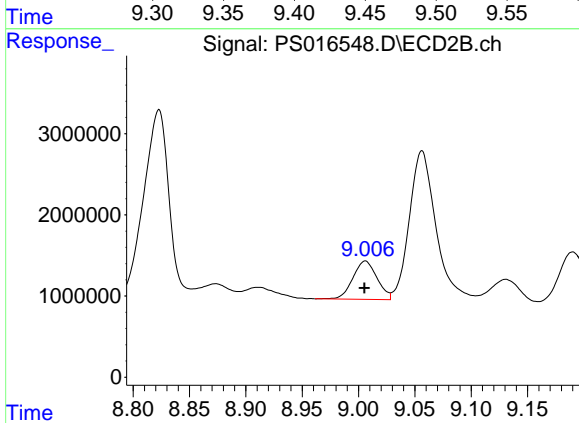
#11 2,4,5-TP (SILVEX)
 R.T.: 8.657 min
 Delta R.T.: 0.028 min
 Response: 50294778
 Conc: 17.24 ng/ml



#12 2,4,5-T

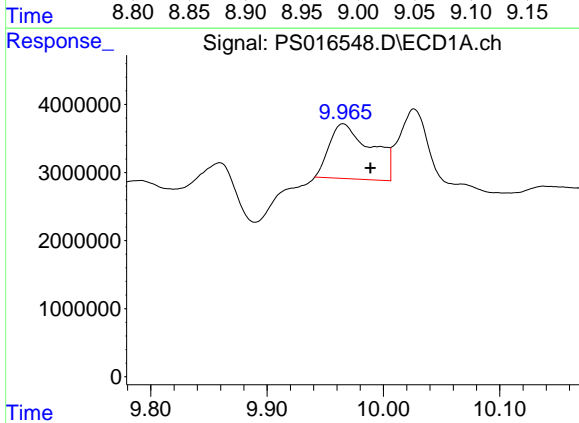
R.T.: 9.440 min
 Delta R.T.: 0.000 min
 Response: 20633335
 Conc: 2.71 ng/ml

Instrument :
 ECD_S
 ClientSampleId :
 PB138602BL



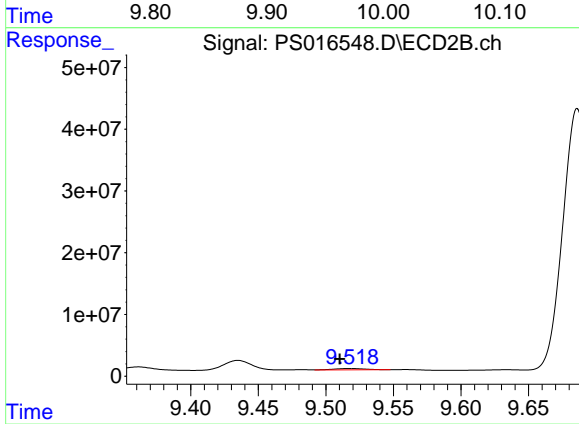
#12 2,4,5-T

R.T.: 9.006 min
 Delta R.T.: 0.000 min
 Response: 7058580
 Conc: 2.44 ng/ml



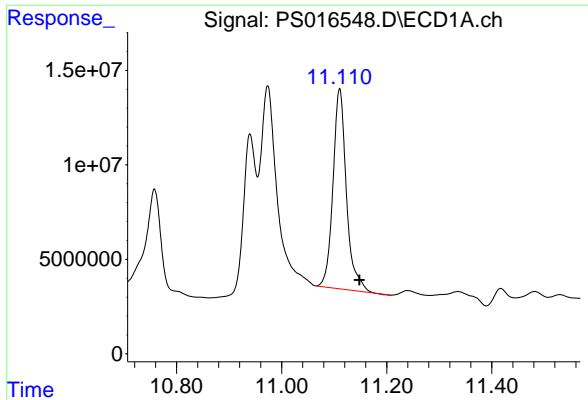
#13 2,4-DB

R.T.: 9.965 min
 Delta R.T.: -0.023 min
 Response: 20206015
 Conc: 13.90 ng/ml



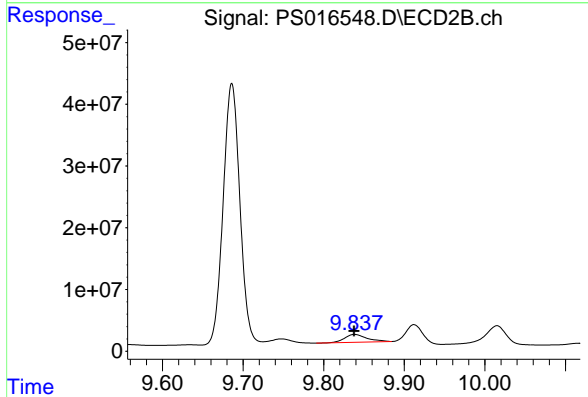
#13 2,4-DB

R.T.: 9.518 min
 Delta R.T.: 0.008 min
 Response: 3511628
 Conc: 9.28 ng/ml

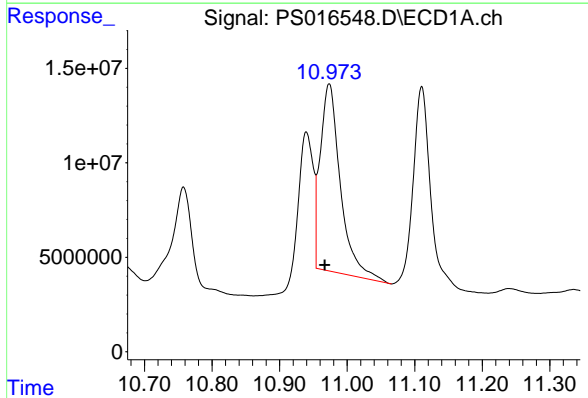


#14 DINOSEB
R.T.: 11.110 min
Delta R.T.: -0.038 min
Response: 187912797
Conc: 35.64 ng/ml

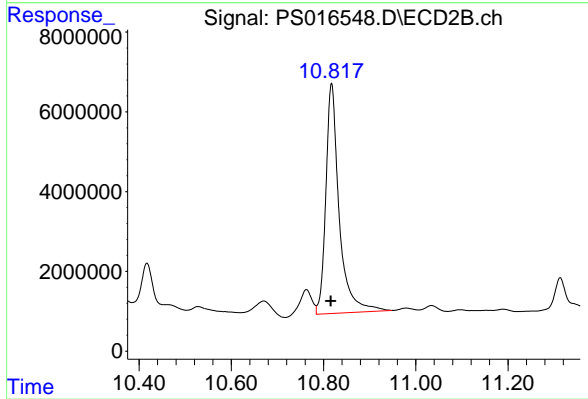
Instrument :
ECD_S
ClientSampleId :
PB138602BL



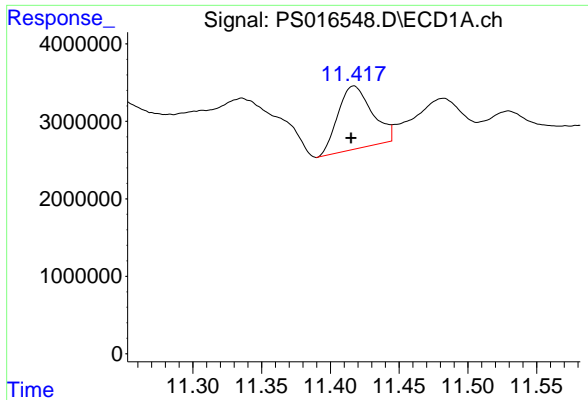
#14 DINOSEB
R.T.: 9.838 min
Delta R.T.: 0.000 min
Response: 24399886
Conc: 11.98 ng/ml



#15 Picloram
R.T.: 10.973 min
Delta R.T.: 0.006 min
Response: 204826229
Conc: 20.52 ng/ml

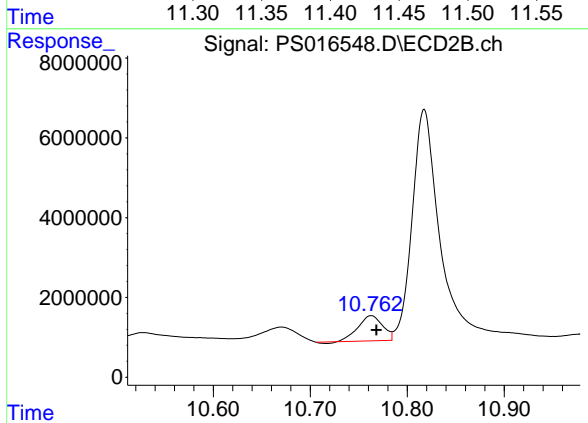


#15 Picloram
R.T.: 10.817 min
Delta R.T.: 0.002 min
Response: 115900332
Conc: 28.78 ng/ml



#16 DCPA
R.T.: 11.417 min
Delta R.T.: 0.002 min
Response: 14076235
Conc: 1.33 ng/ml

Instrument :
ECD_S
ClientSampled :
PB138602BL



#16 DCPA
R.T.: 10.763 min
Delta R.T.: -0.005 min
Response: 11006399
Conc: 2.45 ng/ml