

Data Path : Z:\pestpcbsrv\HPCHEM1\ECD_S\Data\PS082321\
 Data File : PS016574.D
 Signal(s) : Signal #1: ECD1A.ch Signal #2: ECD2B.ch
 Acq On : 23 Aug 2021 20:50
 Operator : DD\AJ
 Sample : M3489-16
 Misc :
 ALS Vial : 26 Sample Multiplier: 1

Instrument :
 ECD_S
 ClientSampleId :
 1-GROWS

Integration File signal 1: autoint1.e
 Integration File signal 2: autoint2.e
 Quant Time: Aug 24 02:22:42 2021
 Quant Method : Z:\pestpcbsrv\HPCHEM1\ECD_S\Method\PS080221.M
 Quant Title : 8080.M
 QLast Update : Mon Aug 02 14:10:19 2021
 Response via : Initial Calibration
 Integrator: ChemStation

Volume Inj. : 2 µl
 Signal #1 Phase : Rtx-CLPesticides Signal #2 Phase: Rtx-CLPesticides2
 Signal #1 Info : 30M x 0.32mm x0.5 Signal #2 Info : 30M x 0.32mm x 0.25µm

	Compound	RT#1	RT#2	Resp#1	Resp#2	ng/ml	ng/ml

System Monitoring Compounds							
4) S	2,4-DCAA	7.182	6.763	451.8E6	142.9E6	307.107	273.954
Target Compounds							
1) T	Dalapon	2.974f	2.483	47667468	96264774	23.627	138.184 #
2) T	3,5-DICHL...	6.342f	5.980	3655597	49129777	1.736	62.217 #
3) T	4-Nitroph...	7.062f	6.418	18949950	130765	23.712	<MDL #
5) T	DICAMBA	7.407	6.917	36746644	18792645	6.559	8.624 #
6) T	MCP P	7.537	7.045	12192856	25253723	2.881	14.617 #
7) T	MCPA	7.659f	7.295f	425.4E6	98666737	69.056	36.196 #
8) T	DICHLORPROP	8.124f	7.564	6334184	33598104	4.707	62.017 #
9) T	2,4-D	0.000	7.822	0	20808368	N.D.	32.843
10) T	Pentachlo...	8.601	8.263	51080453	28510624	2.602	3.849 #
11) T	2,4,5-TP ...	9.185	8.654	24337702	56195898	3.366	19.259 #
12) T	2,4,5-T	9.384f	9.065f	108.8E6	9078890	14.266	3.134 #
13) T	2,4-DB	9.960	9.529	13674003	1944567	9.408	5.140 #
14) T	DINOSEB	11.107f	9.875	491.4E6	177.8E6	93.181	87.273
15) T	Picloram	10.934	10.804	497.9E6	31661336	49.889	7.863 #
16) T	DCPA	11.368f	10.804	19080323	31661336	1.805	7.044 #

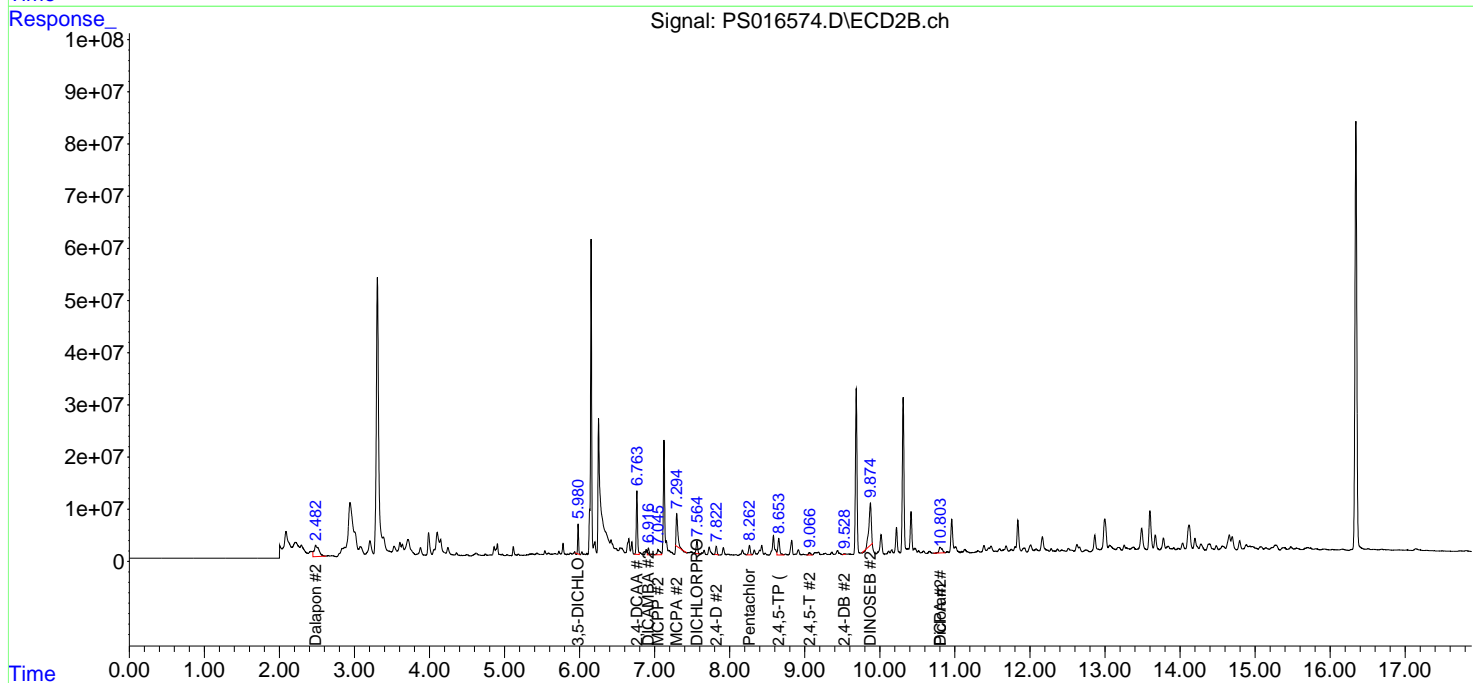
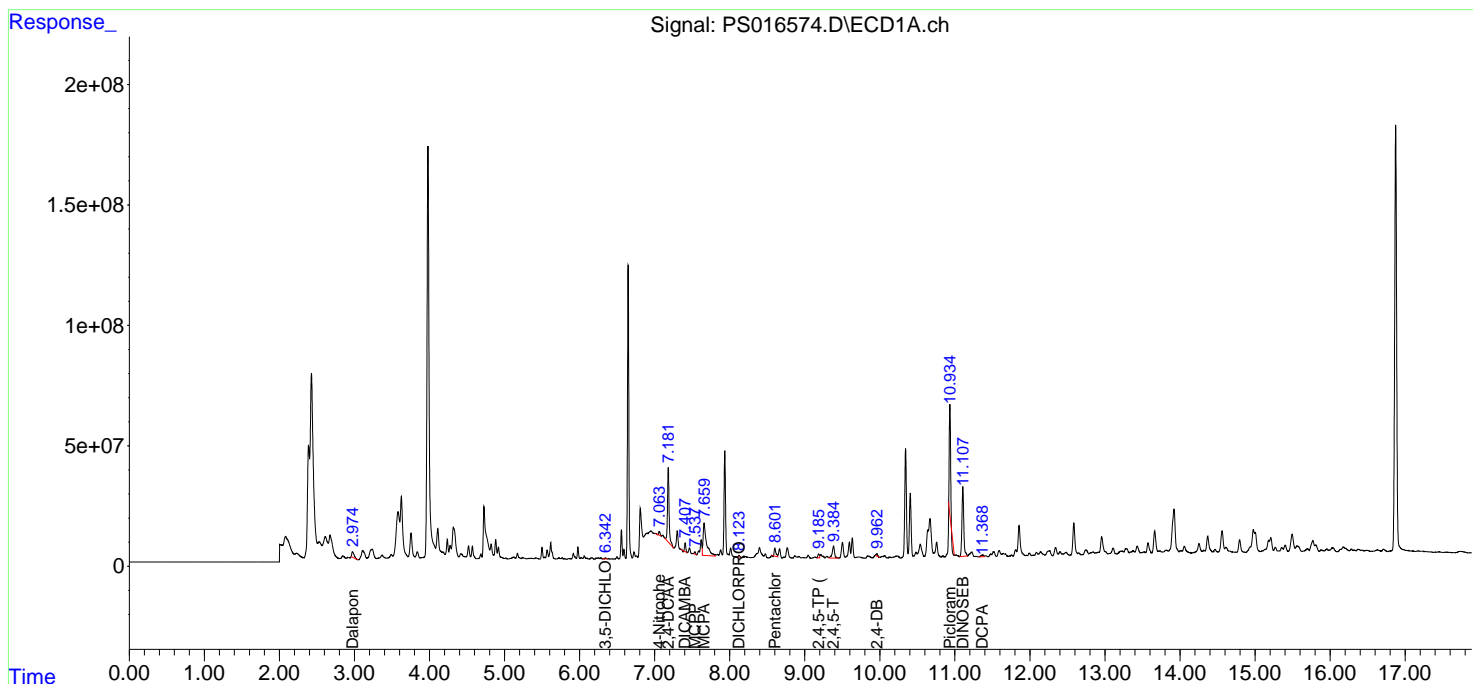
(f)=RT Delta > 1/2 Window (#)=Amounts differ by > 25% (m)=manual int.

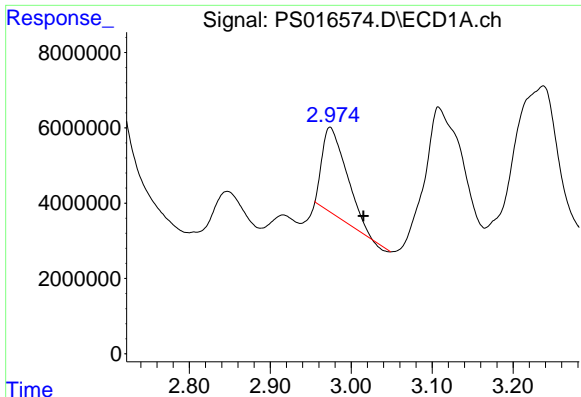
Data Path : Z:\pestpcbsrv\HPCHEM1\ECD_S\Data\PS082321\
 Data File : PS016574.D
 Signal(s) : Signal #1: ECD1A.ch Signal #2: ECD2B.ch
 Acq On : 23 Aug 2021 20:50
 Operator : DD\AJ
 Sample : M3489-16
 Misc :
 ALS Vial : 26 Sample Multiplier: 1

Instrument :
 ECD_S
 ClientSampled :
 1-GROWS

Integration File signal 1: autoint1.e
 Integration File signal 2: autoint2.e
 Quant Time: Aug 24 02:22:42 2021
 Quant Method : Z:\pestpcbsrv\HPCHEM1\ECD_S\Method\PS080221.M
 Quant Title : 8080.M
 QLast Update : Mon Aug 02 14:10:19 2021
 Response via : Initial Calibration
 Integrator: ChemStation

Volume Inj. : 2 µl
 Signal #1 Phase : Rtx-CLPesticides Signal #2 Phase: Rtx-CLPesticides2
 Signal #1 Info : 30M x 0.32mm x0.5 Signal #2 Info : 30M x 0.32mm x 0.25µm

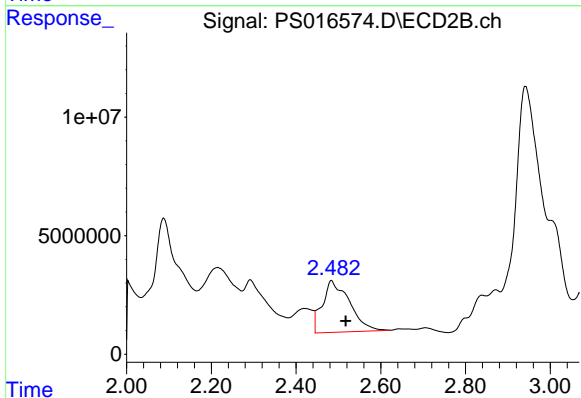




#1 Dalapon

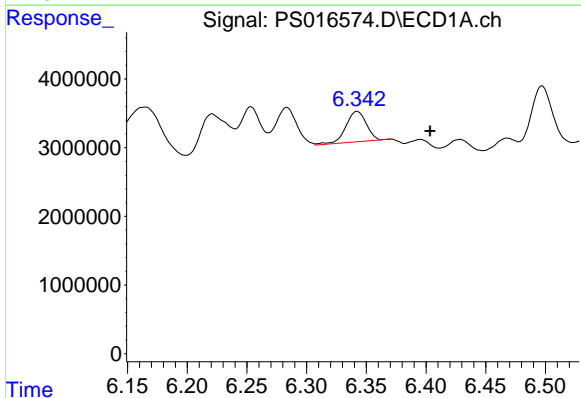
R.T.: 2.974 min
 Delta R.T.: -0.041 min
 Response: 47667468
 Conc: 23.63 ng/ml

Instrument :
 ECD_S
 ClientSampled :
 1-GROWS



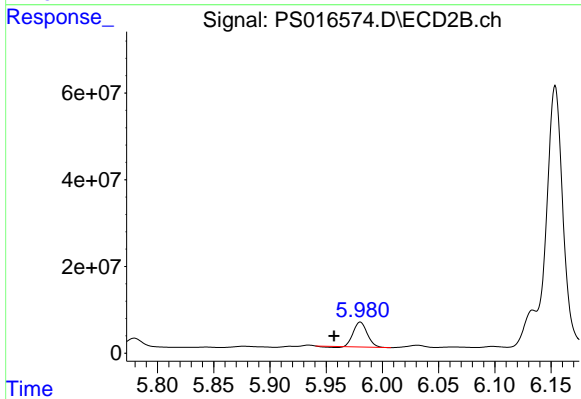
#1 Dalapon

R.T.: 2.483 min
 Delta R.T.: -0.034 min
 Response: 96264774
 Conc: 138.18 ng/ml



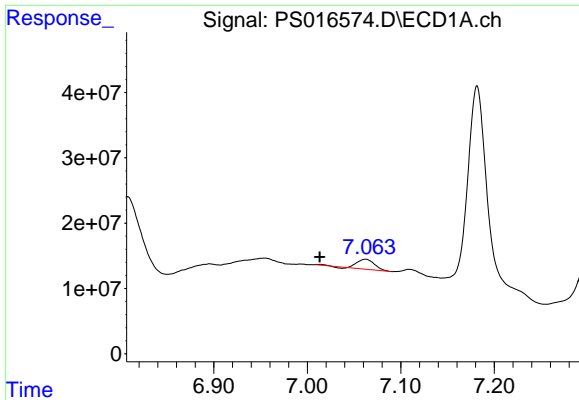
#2 3,5-DICHLOROBENZOIC ACID

R.T.: 6.342 min
 Delta R.T.: -0.061 min
 Response: 3655597
 Conc: 1.74 ng/ml



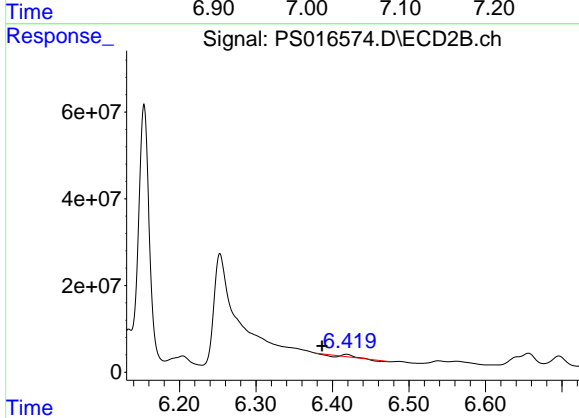
#2 3,5-DICHLOROBENZOIC ACID

R.T.: 5.980 min
 Delta R.T.: 0.023 min
 Response: 49129777
 Conc: 62.22 ng/ml

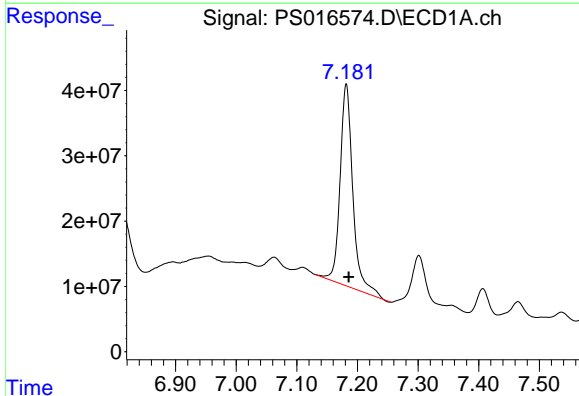


#3 4-Nitrophenol
 R.T.: 7.062 min
 Delta R.T.: 0.049 min
 Response: 18949950
 Conc: 23.71 ng/ml

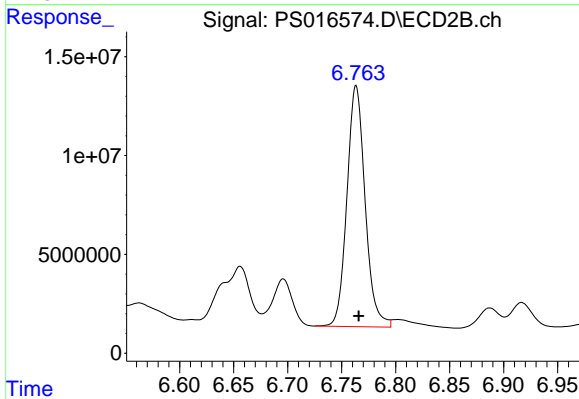
Instrument :
 ECD_S
 ClientSampleId :
 1-GROWS



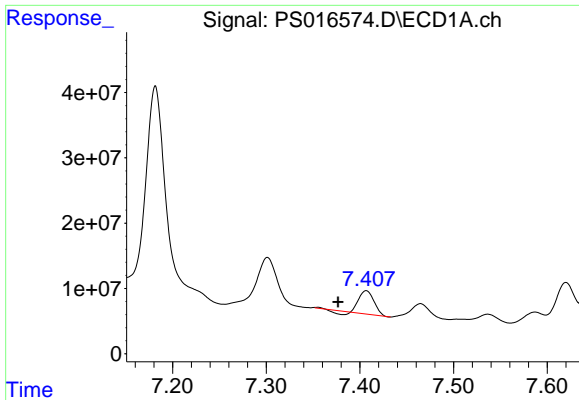
#3 4-Nitrophenol
 R.T.: 6.418 min
 Delta R.T.: 0.032 min
 Response: 130765
 Conc: N.D.



#4 2,4-DCAA
 R.T.: 7.182 min
 Delta R.T.: -0.004 min
 Response: 451786962
 Conc: 307.11 ng/ml

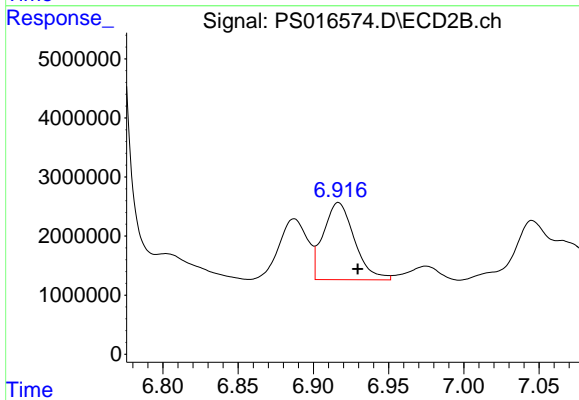


#4 2,4-DCAA
 R.T.: 6.763 min
 Delta R.T.: -0.002 min
 Response: 142901237
 Conc: 273.95 ng/ml

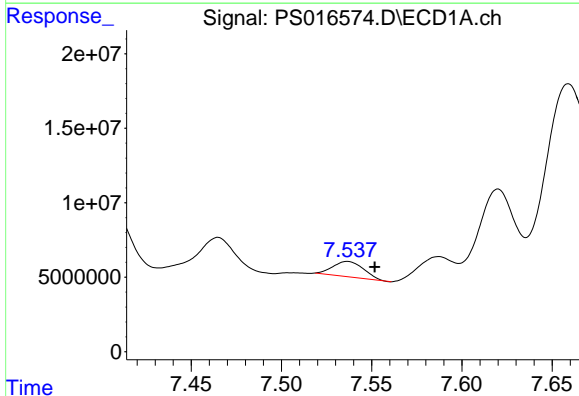


#5 DICAMBA
 R.T.: 7.407 min
 Delta R.T.: 0.030 min
 Response: 36746644
 Conc: 6.56 ng/ml

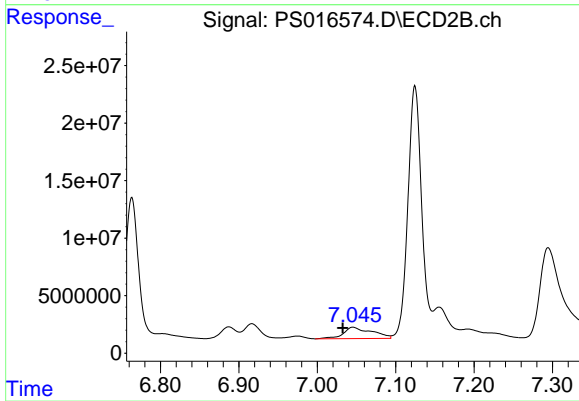
Instrument :
 ECD_S
 ClientSampleId :
 1-GROWS



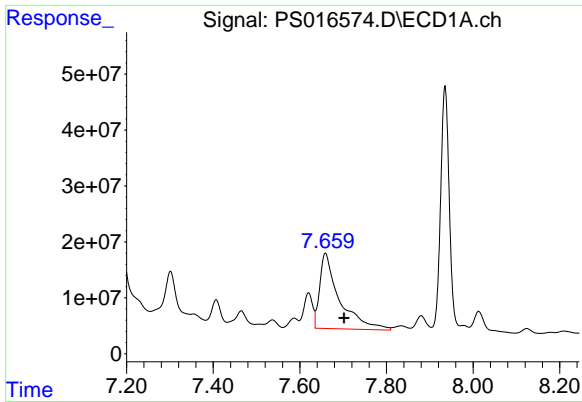
#5 DICAMBA
 R.T.: 6.917 min
 Delta R.T.: -0.013 min
 Response: 18792645
 Conc: 8.62 ng/ml



#6 MCP
 R.T.: 7.537 min
 Delta R.T.: -0.015 min
 Response: 12192856
 Conc: 2.88 ug/ml



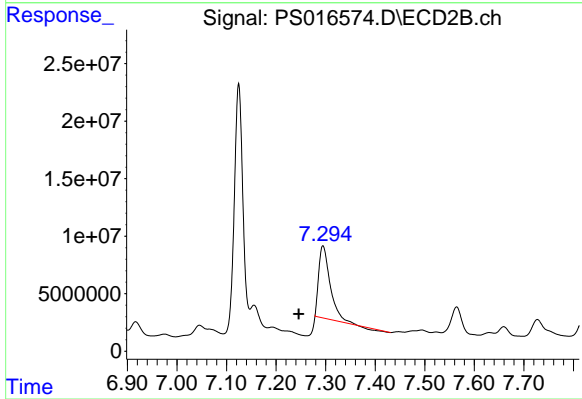
#6 MCP
 R.T.: 7.045 min
 Delta R.T.: 0.013 min
 Response: 25253723
 Conc: 14.62 ug/ml



#7 MCPA

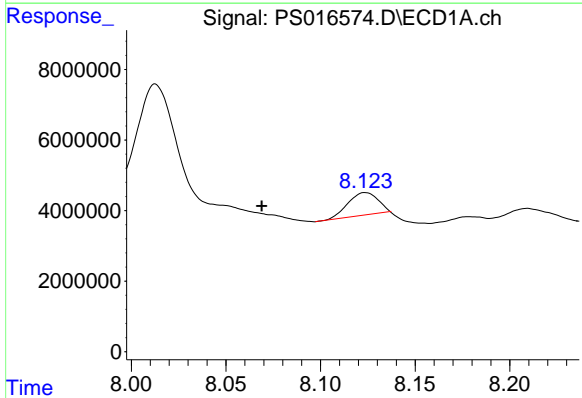
R.T.: 7.659 min
 Delta R.T.: -0.043 min
 Response: 425409589
 Conc: 69.06 ug/ml

Instrument :
 ECD_S
 ClientSampleId :
 1-GROWS



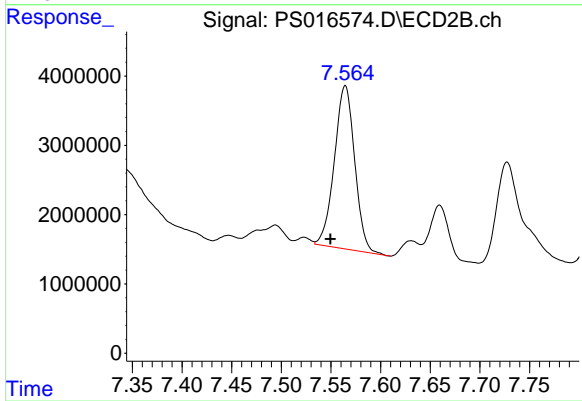
#7 MCPA

R.T.: 7.295 min
 Delta R.T.: 0.049 min
 Response: 98666737
 Conc: 36.20 ug/ml



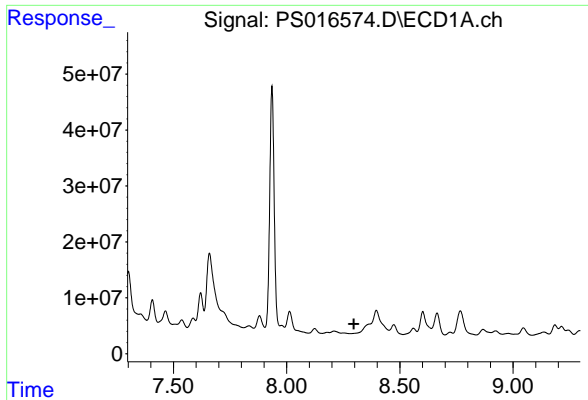
#8 DICHLORPROP

R.T.: 8.124 min
 Delta R.T.: 0.055 min
 Response: 6334184
 Conc: 4.71 ng/ml



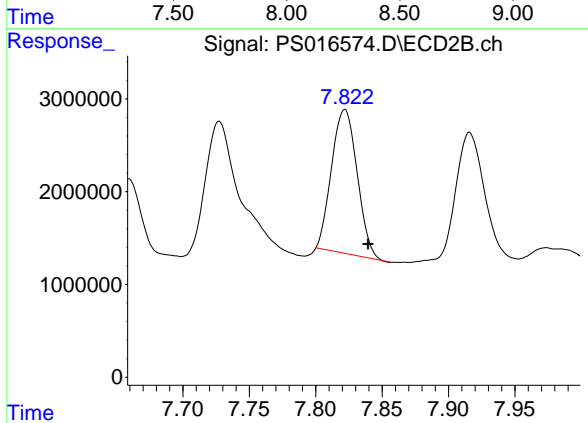
#8 DICHLORPROP

R.T.: 7.564 min
 Delta R.T.: 0.015 min
 Response: 33598104
 Conc: 62.02 ng/ml

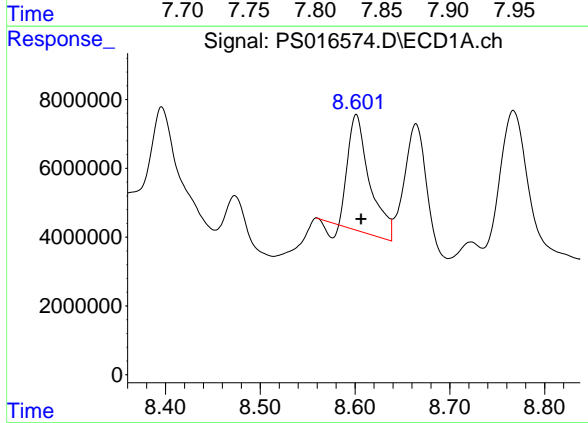


#9 2,4-D
 R.T.: 0.000 min
 Exp R.T.: 8.297 min
 Response: 0
 Conc: N.D.

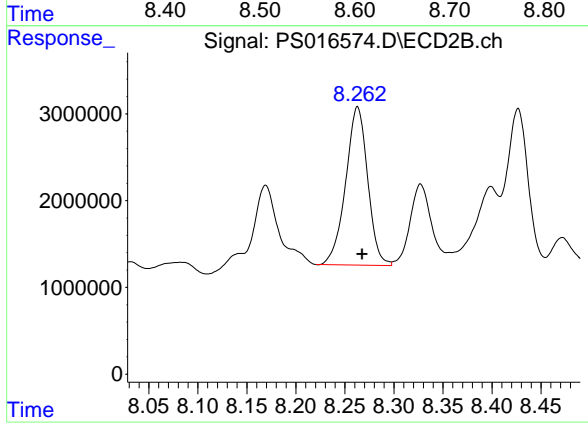
Instrument :
 ECD_S
 ClientSampleId :
 1-GROWS



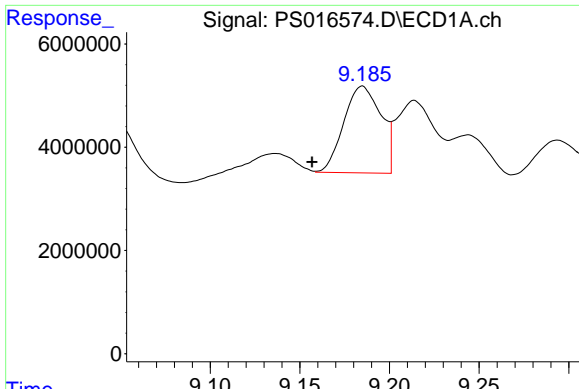
#9 2,4-D
 R.T.: 7.822 min
 Delta R.T.: -0.017 min
 Response: 20808368
 Conc: 32.84 ng/ml



#10 Pentachlorophenol
 R.T.: 8.601 min
 Delta R.T.: -0.005 min
 Response: 51080453
 Conc: 2.60 ng/ml

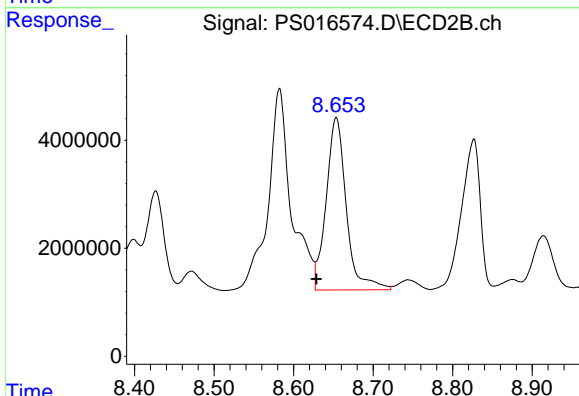


#10 Pentachlorophenol
 R.T.: 8.263 min
 Delta R.T.: -0.005 min
 Response: 28510624
 Conc: 3.85 ng/ml

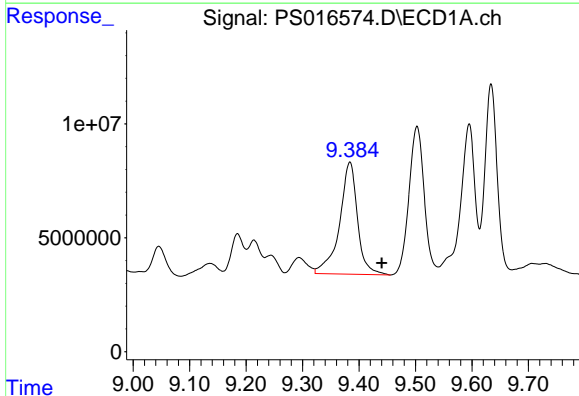


#11 2,4,5-TP (SILVEX)
 R.T.: 9.185 min
 Delta R.T.: 0.028 min
 Response: 24337702
 Conc: 3.37 ng/ml

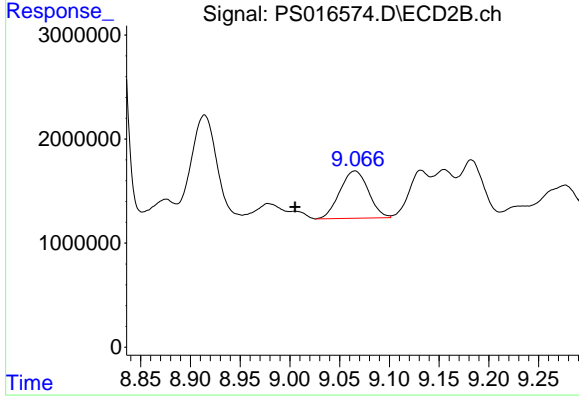
Instrument :
 ECD_S
 ClientSampled :
 1-GROWS



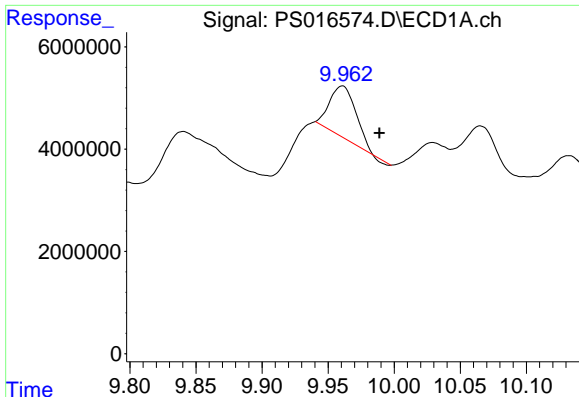
#11 2,4,5-TP (SILVEX)
 R.T.: 8.654 min
 Delta R.T.: 0.025 min
 Response: 56195898
 Conc: 19.26 ng/ml



#12 2,4,5-T
 R.T.: 9.384 min
 Delta R.T.: -0.057 min
 Response: 108751435
 Conc: 14.27 ng/ml

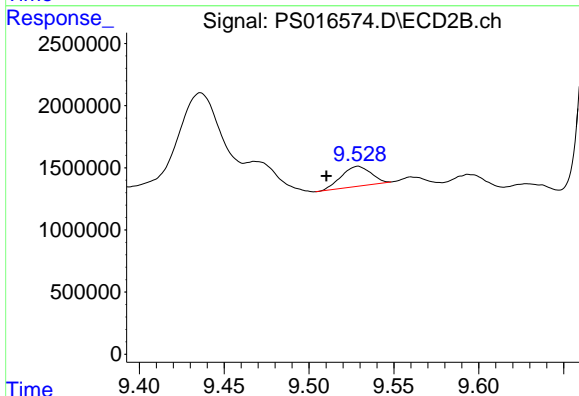


#12 2,4,5-T
 R.T.: 9.065 min
 Delta R.T.: 0.060 min
 Response: 9078890
 Conc: 3.13 ng/ml

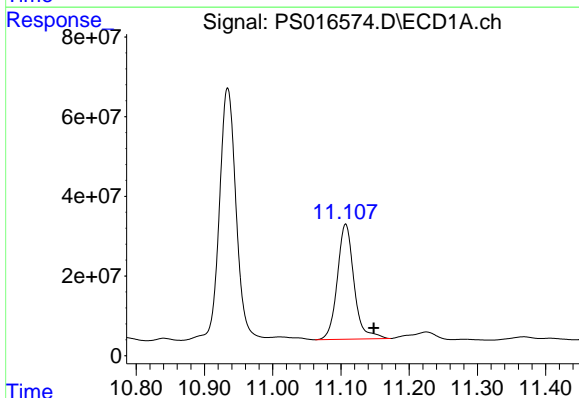


#13 2,4-DB
 R.T.: 9.960 min
 Delta R.T.: -0.028 min
 Response: 13674003
 Conc: 9.41 ng/ml

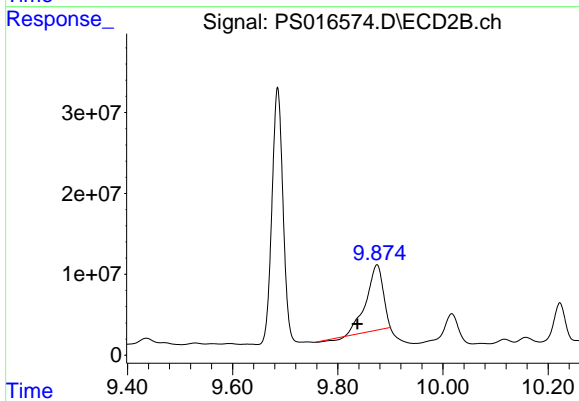
Instrument :
 ECD_S
 ClientSampleId :
 1-GROWS



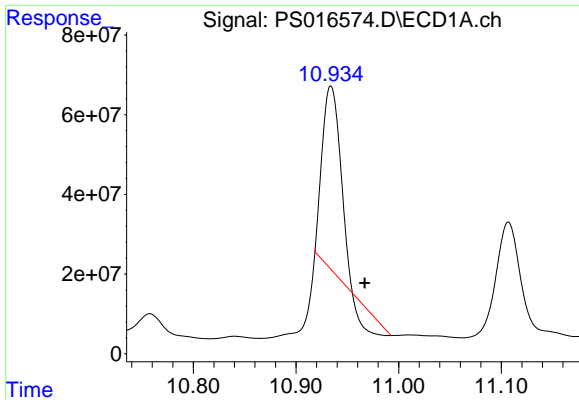
#13 2,4-DB
 R.T.: 9.529 min
 Delta R.T.: 0.019 min
 Response: 1944567
 Conc: 5.14 ng/ml



#14 DINOSEB
 R.T.: 11.107 min
 Delta R.T.: -0.041 min
 Response: 491369265
 Conc: 93.18 ng/ml

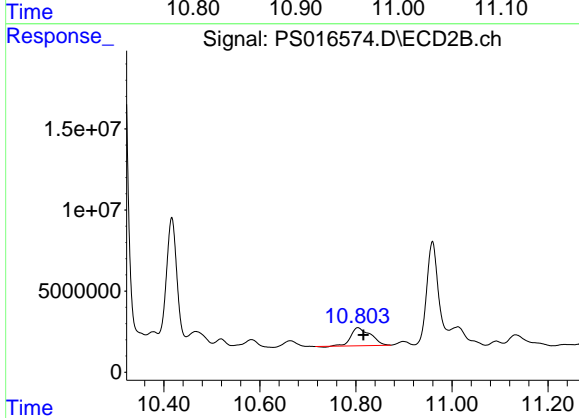


#14 DINOSEB
 R.T.: 9.875 min
 Delta R.T.: 0.037 min
 Response: 177801965
 Conc: 87.27 ng/ml

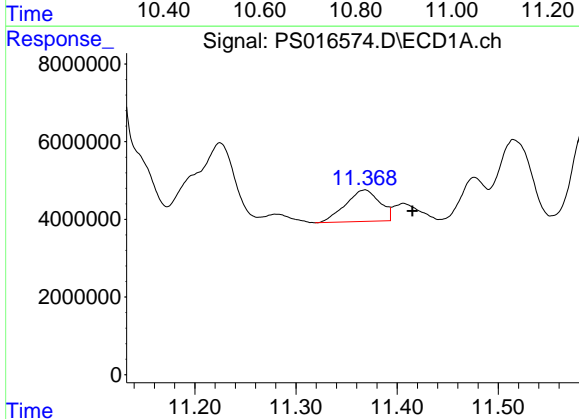


#15 Picloram
 R.T.: 10.934 min
 Delta R.T.: -0.033 min
 Response: 497936370
 Conc: 49.89 ng/ml

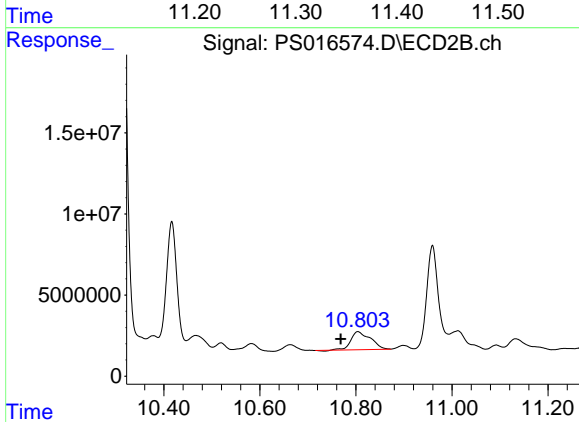
Instrument :
 ECD_S
 ClientSampleId :
 1-GROWS



#15 Picloram
 R.T.: 10.804 min
 Delta R.T.: -0.011 min
 Response: 31661336
 Conc: 7.86 ng/ml



#16 DCPA
 R.T.: 11.368 min
 Delta R.T.: -0.047 min
 Response: 19080323
 Conc: 1.81 ng/ml



#16 DCPA
 R.T.: 10.804 min
 Delta R.T.: 0.036 min
 Response: 31661336
 Conc: 7.04 ng/ml