

Data Path : Z:\pestpcbsrv\HPCHEM1\ECD_S\Data\PS082321\
 Data File : PS016584.D
 Signal(s) : Signal #1: ECD1A.ch Signal #2: ECD2B.ch
 Acq On : 24 Aug 2021 00:52
 Operator : DD\AJ
 Sample : M3435-09
 Misc :
 ALS Vial : 34 Sample Multiplier: 1

Instrument :
 ECD_S
 ClientSampleId :
 SWCS-22-0306

Integration File signal 1: autoint1.e
 Integration File signal 2: autoint2.e
 Quant Time: Aug 24 02:25:04 2021
 Quant Method : Z:\pestpcbsrv\HPCHEM1\ECD_S\Method\PS080221.M
 Quant Title : 8080.M
 QLast Update : Mon Aug 02 14:10:19 2021
 Response via : Initial Calibration
 Integrator: ChemStation

Volume Inj. : 2 µl
 Signal #1 Phase : Rtx-CLPesticides Signal #2 Phase: Rtx-CLPesticides2
 Signal #1 Info : 30M x 0.32mm x0.5 Signal #2 Info : 30M x 0.32mm x 0.25µm

Compound	RT#1	RT#2	Resp#1	Resp#2	ng/ml	ng/ml

System Monitoring Compounds						
4) S 2,4-DCAA	7.181	6.763	465.7E6	170.4E6	316.536	326.673
Target Compounds						
1) T Dalapon	2.973f	2.483	42897590	95497815	21.262	137.083 #
2) T 3,5-DICHL...	0.000	5.980	0	58387641	N.D.	73.941
3) T 4-Nitroph...	6.957f	6.419	14090052	5151581	17.631	16.765
5) T DICAMBA	0.000	6.963	0	5313634	N.D.	2.438
6) T MCPP	7.538	7.012	9252776	7655774	2.186	4.431 #
7) T MCPA	7.730	7.219	18213461	14199527	2.957	5.209 #
8) T DICHLORPROP	8.034	7.565	41052987	29014315	30.505	53.556 #
9) T 2,4-D	0.000	7.821	0	10817792	N.D.	17.074
10) T Pentachlo...	8.622	8.251	11831569	11982947	<MDL	1.618 #
11) T 2,4,5-TP ...	9.185	8.654	24051642	56201222	3.326	19.261 #
12) T 2,4,5-T	9.382f	8.988	89893815	14569376	11.793	5.030 #
13) T 2,4-DB	9.961	9.525	14217500	7217500	9.782	19.079 #
14) T DINOSEB	11.107f	9.846	413.0E6	21980579	78.325	10.789 #
15) T Picloram	10.933	10.813	86377740	36942311	8.654	9.174
16) T DCPA	11.435	10.752	29721574	3309079	2.812	<MDL #

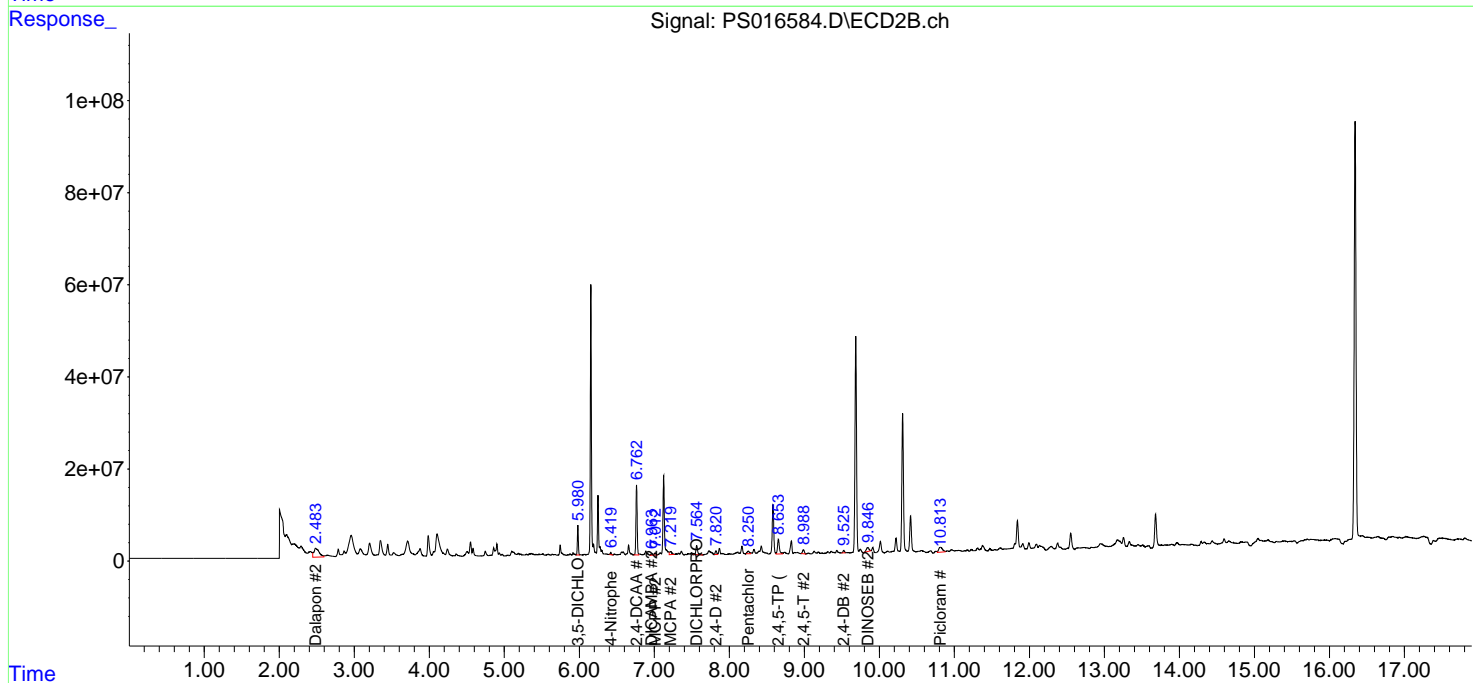
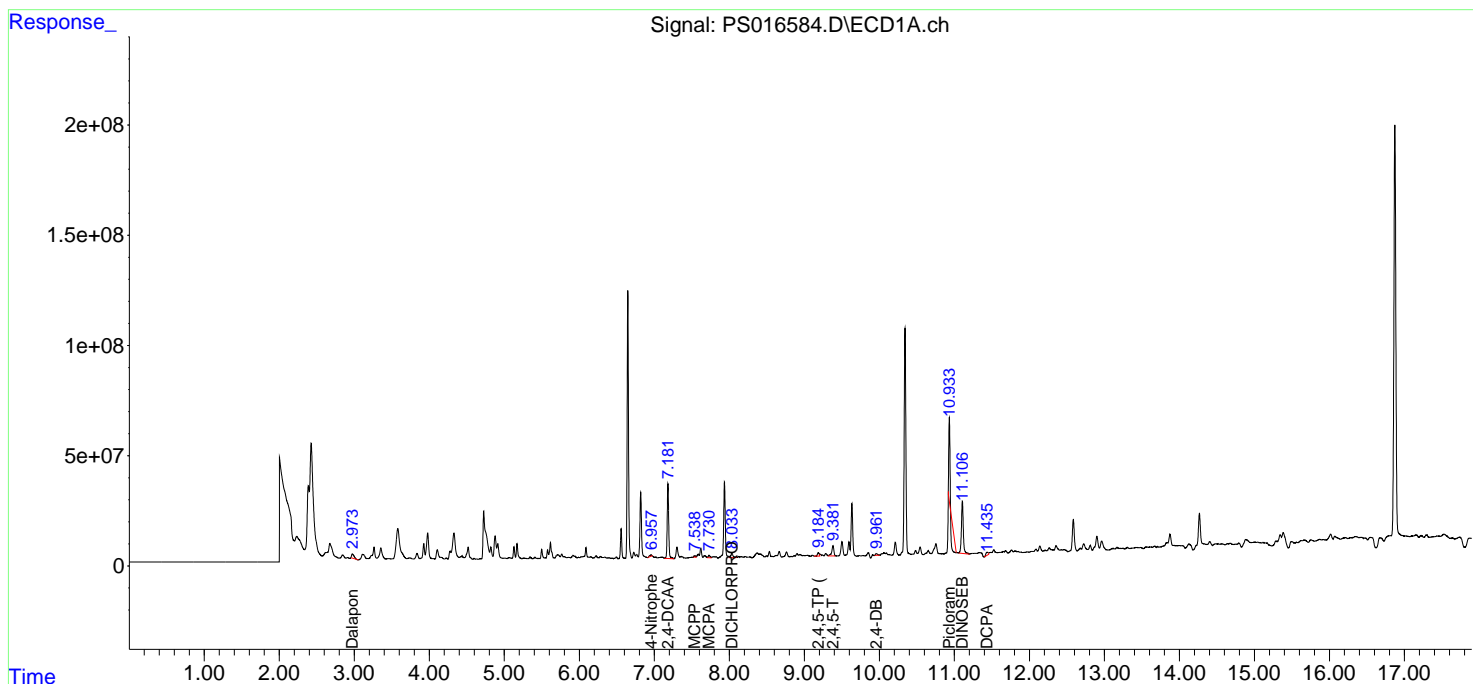
(f)=RT Delta > 1/2 Window (#)=Amounts differ by > 25% (m)=manual int.

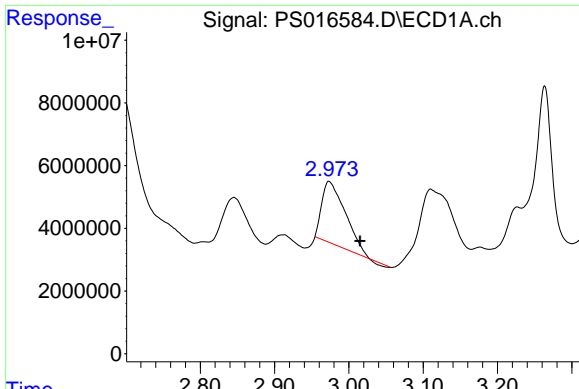
Data Path : Z:\pestpcbsrv\HPCHEM1\ECD_S\Data\PS082321\
 Data File : PS016584.D
 Signal(s) : Signal #1: ECD1A.ch Signal #2: ECD2B.ch
 Acq On : 24 Aug 2021 00:52
 Operator : DD\AJ
 Sample : M3435-09
 Misc :
 ALS Vial : 34 Sample Multiplier: 1

Instrument :
 ECD_S
 ClientSampleId :
 SWCS-22-0306

Integration File signal 1: autoint1.e
 Integration File signal 2: autoint2.e
 Quant Time: Aug 24 02:25:04 2021
 Quant Method : Z:\pestpcbsrv\HPCHEM1\ECD_S\Method\PS080221.M
 Quant Title : 8080.M
 QLast Update : Mon Aug 02 14:10:19 2021
 Response via : Initial Calibration
 Integrator: ChemStation

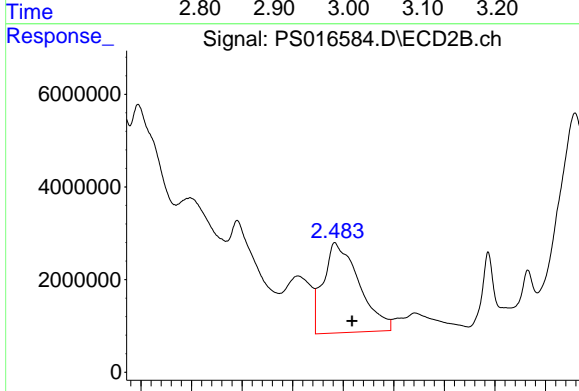
Volume Inj. : 2 µl
 Signal #1 Phase : Rtx-CLPesticides Signal #2 Phase: Rtx-CLPesticides2
 Signal #1 Info : 30M x 0.32mm x0.5 Signal #2 Info : 30M x 0.32mm x 0.25µm



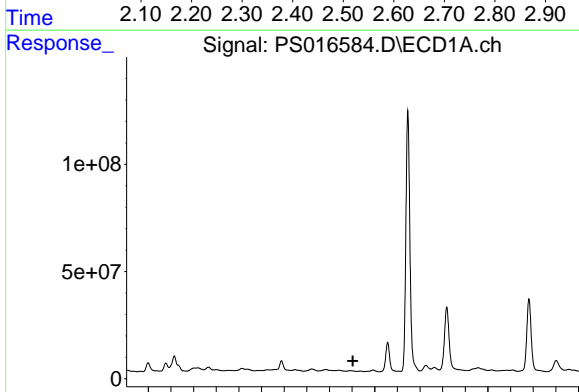


#1 Dalapon
 R.T.: 2.973 min
 Delta R.T.: -0.042 min
 Response: 42897590
 Conc: 21.26 ng/ml

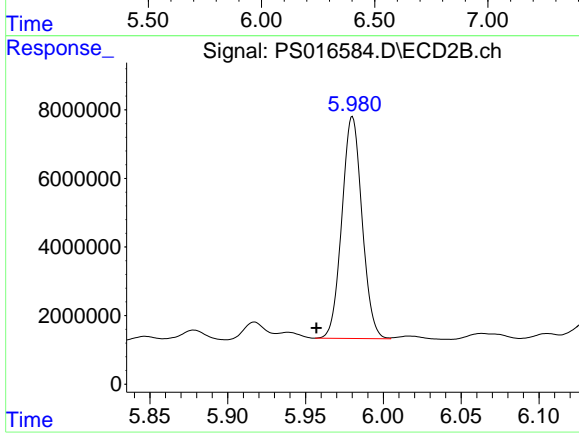
Instrument :
 ECD_S
ClientSampleId :
 SWCS-22-0306



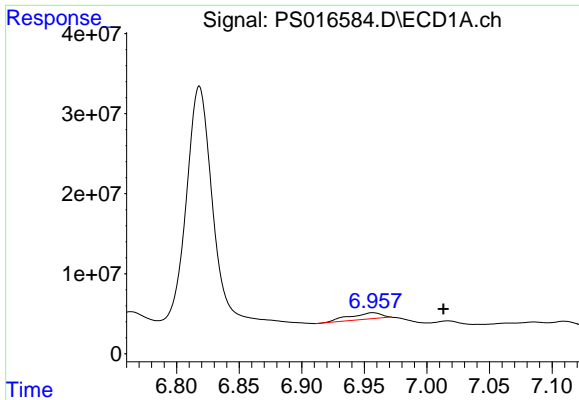
#1 Dalapon
 R.T.: 2.483 min
 Delta R.T.: -0.034 min
 Response: 95497815
 Conc: 137.08 ng/ml



#2 3,5-DICHLOROBENZOIC ACID
 R.T.: 0.000 min
 Exp R.T. : 6.404 min
 Response: 0
 Conc: N.D.

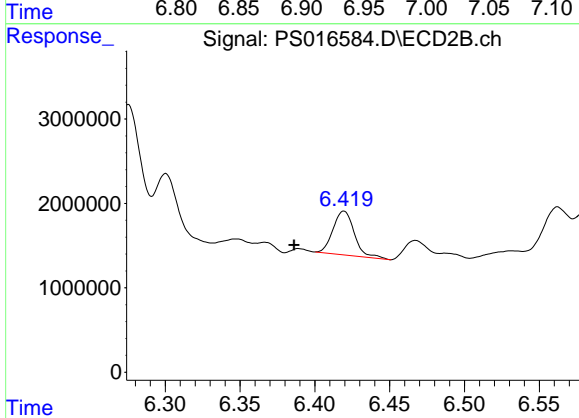


#2 3,5-DICHLOROBENZOIC ACID
 R.T.: 5.980 min
 Delta R.T.: 0.023 min
 Response: 58387641
 Conc: 73.94 ng/ml

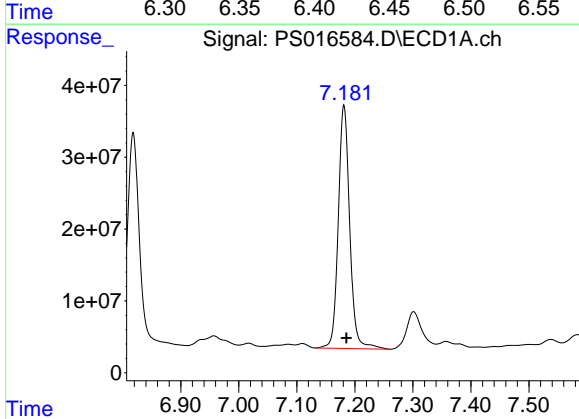


#3 4-Nitrophenol
 R.T.: 6.957 min
 Delta R.T.: -0.056 min
 Response: 14090052
 Conc: 17.63 ng/ml

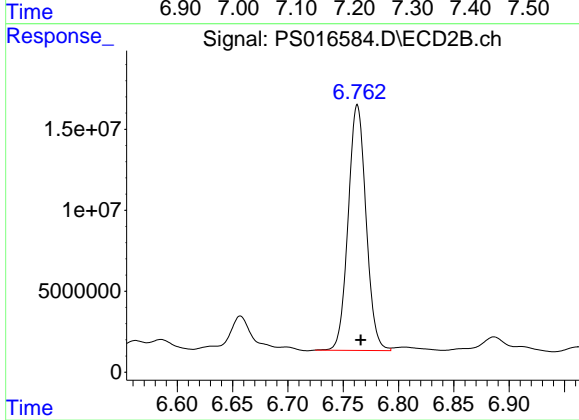
Instrument :
 ECD_S
 ClientSampleId :
 SWCS-22-0306



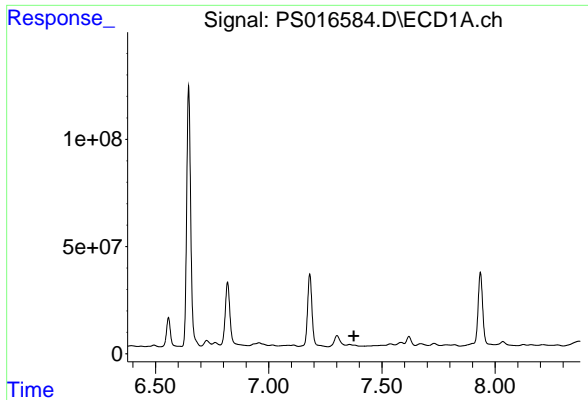
#3 4-Nitrophenol
 R.T.: 6.419 min
 Delta R.T.: 0.033 min
 Response: 5151581
 Conc: 16.76 ng/ml



#4 2,4-DCAA
 R.T.: 7.181 min
 Delta R.T.: -0.004 min
 Response: 465658003
 Conc: 316.54 ng/ml



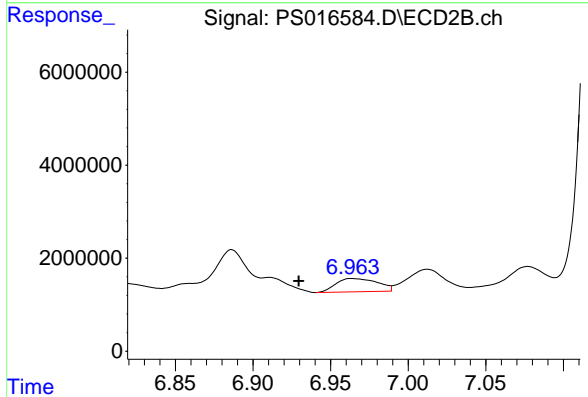
#4 2,4-DCAA
 R.T.: 6.763 min
 Delta R.T.: -0.003 min
 Response: 170400588
 Conc: 326.67 ng/ml



#5 DICAMBA

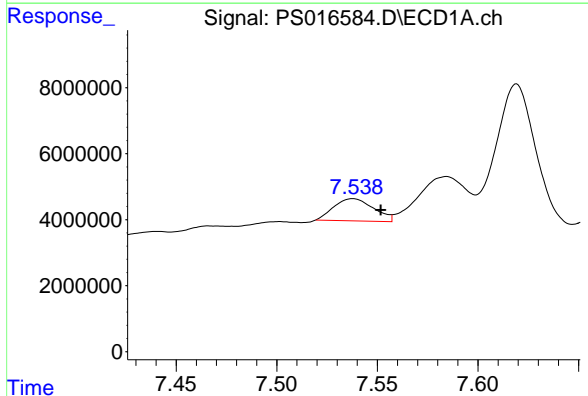
R.T.: 0.000 min
 Exp R.T.: 7.377 min
 Response: 0
 Conc: N.D.

Instrument :
 ECD_S
 ClientSampleId :
 SWCS-22-0306



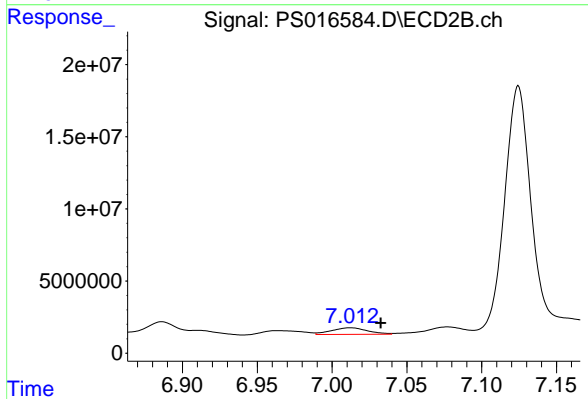
#5 DICAMBA

R.T.: 6.963 min
 Delta R.T.: 0.034 min
 Response: 5313634
 Conc: 2.44 ng/ml



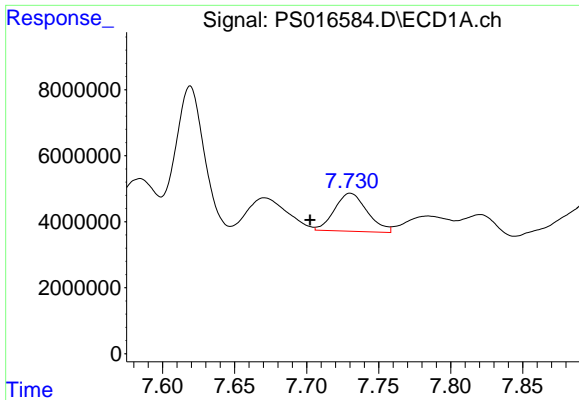
#6 MCP

R.T.: 7.538 min
 Delta R.T.: -0.014 min
 Response: 9252776
 Conc: 2.19 ug/ml



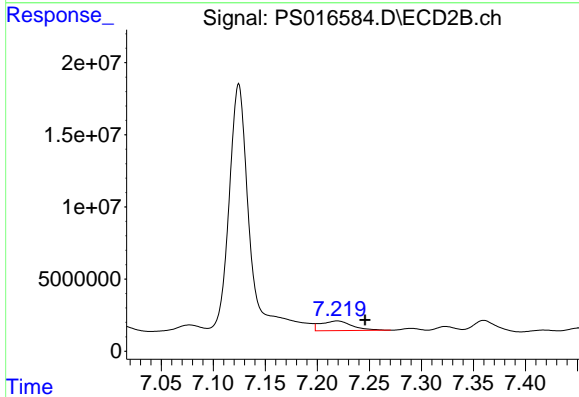
#6 MCP

R.T.: 7.012 min
 Delta R.T.: -0.020 min
 Response: 7655774
 Conc: 4.43 ug/ml

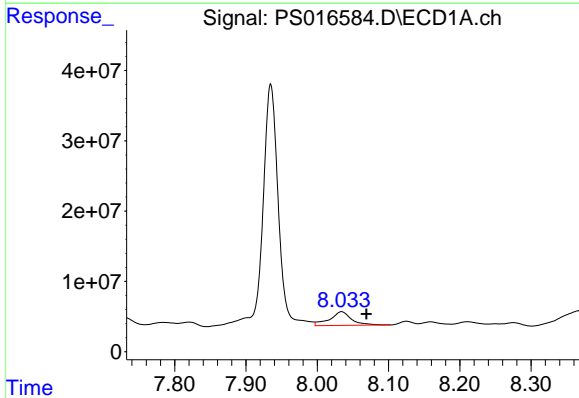


#7 MCPA
 R.T.: 7.730 min
 Delta R.T.: 0.028 min
 Response: 18213461
 Conc: 2.96 ug/ml

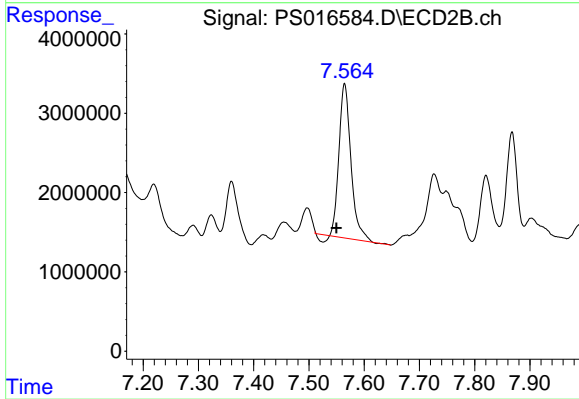
Instrument :
 ECD_S
 ClientSampleId :
 SWCS-22-0306



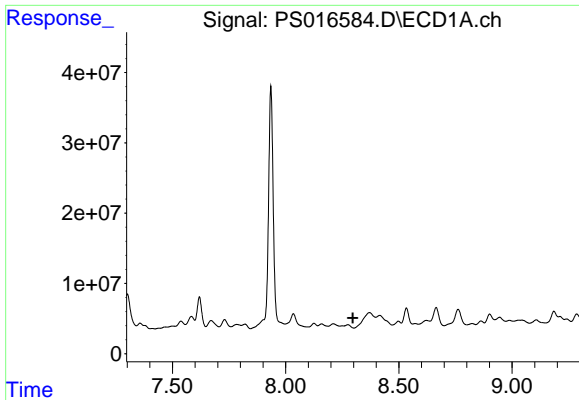
#7 MCPA
 R.T.: 7.219 min
 Delta R.T.: -0.027 min
 Response: 14199527
 Conc: 5.21 ug/ml



#8 DICHLORPROP
 R.T.: 8.034 min
 Delta R.T.: -0.035 min
 Response: 41052987
 Conc: 30.51 ng/ml

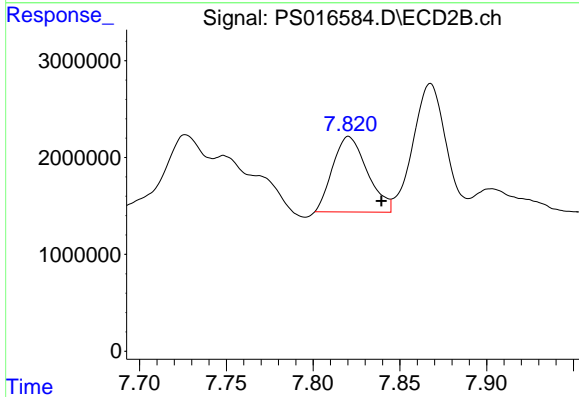


#8 DICHLORPROP
 R.T.: 7.565 min
 Delta R.T.: 0.015 min
 Response: 29014315
 Conc: 53.56 ng/ml

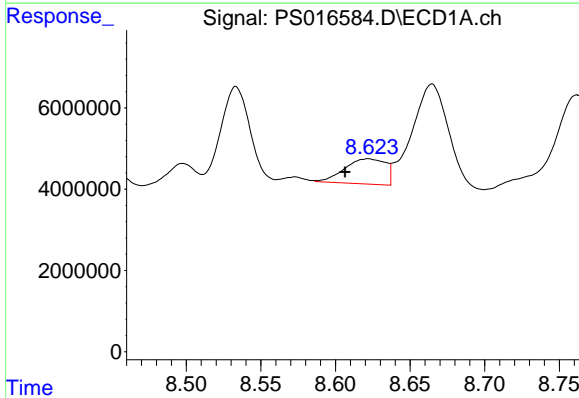


#9 2,4-D
 R.T.: 0.000 min
 Exp R.T.: 8.297 min
 Response: 0
 Conc: N.D.

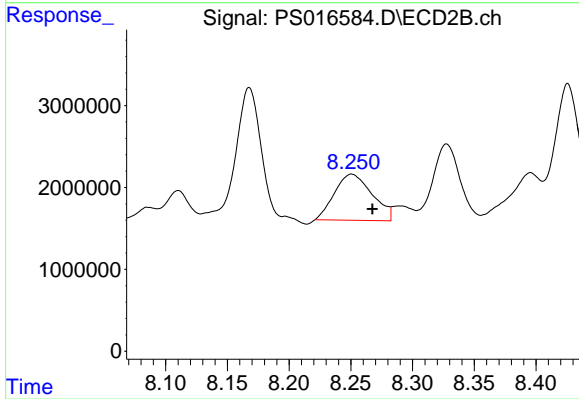
Instrument :
 ECD_S
 ClientSampleId :
 SWCS-22-0306



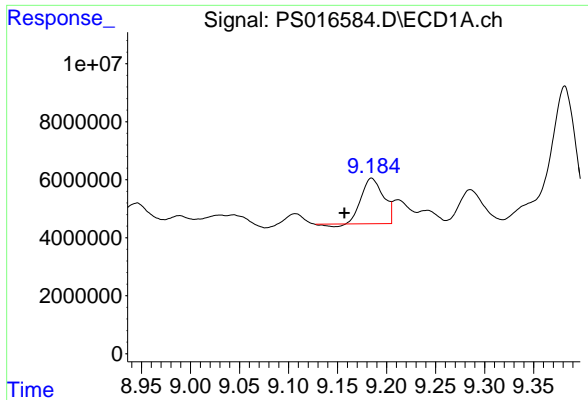
#9 2,4-D
 R.T.: 7.821 min
 Delta R.T.: -0.019 min
 Response: 10817792
 Conc: 17.07 ng/ml



#10 Pentachlorophenol
 R.T.: 8.622 min
 Delta R.T.: 0.016 min
 Response: 11831569
 Conc: N.D.

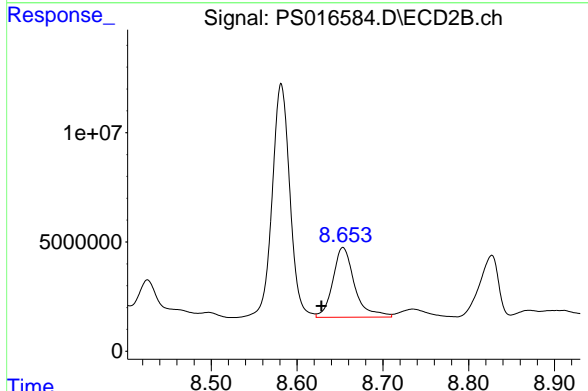


#10 Pentachlorophenol
 R.T.: 8.251 min
 Delta R.T.: -0.017 min
 Response: 11982947
 Conc: 1.62 ng/ml

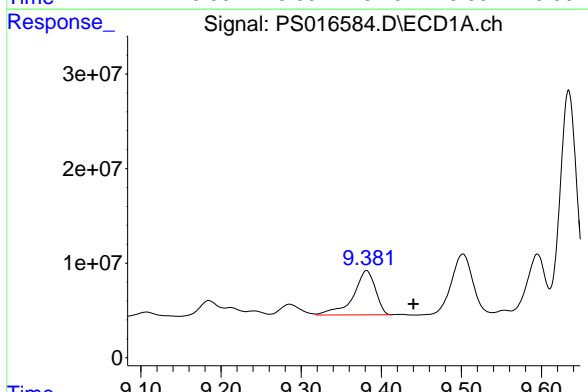


#11 2,4,5-TP (SILVEX)
 R.T.: 9.185 min
 Delta R.T.: 0.028 min
 Response: 24051642
 Conc: 3.33 ng/ml

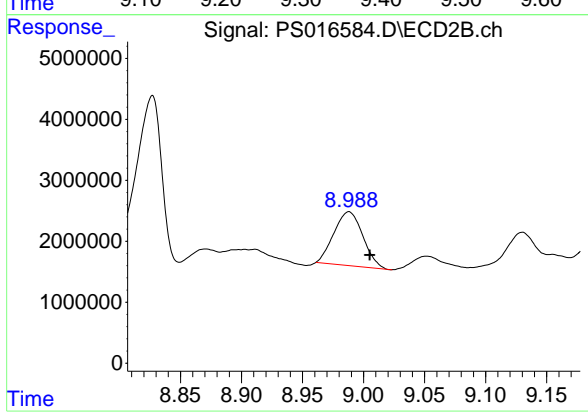
Instrument :
 ECD_S
ClientSampleId :
 SWCS-22-0306



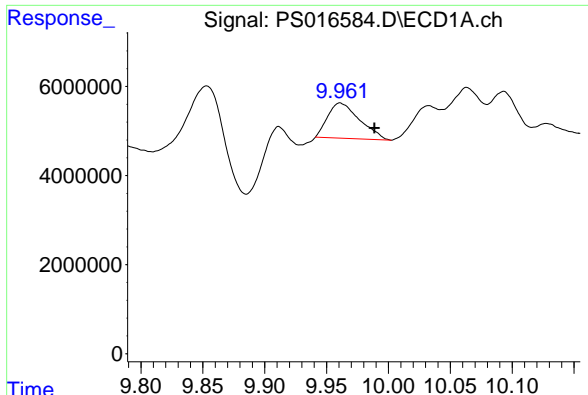
#11 2,4,5-TP (SILVEX)
 R.T.: 8.654 min
 Delta R.T.: 0.025 min
 Response: 56201222
 Conc: 19.26 ng/ml



#12 2,4,5-T
 R.T.: 9.382 min
 Delta R.T.: -0.059 min
 Response: 89893815
 Conc: 11.79 ng/ml

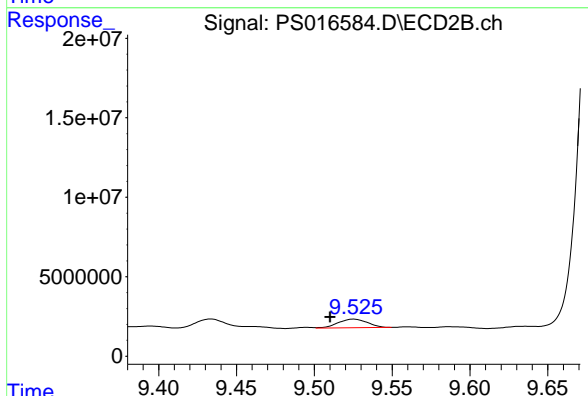


#12 2,4,5-T
 R.T.: 8.988 min
 Delta R.T.: -0.017 min
 Response: 14569376
 Conc: 5.03 ng/ml

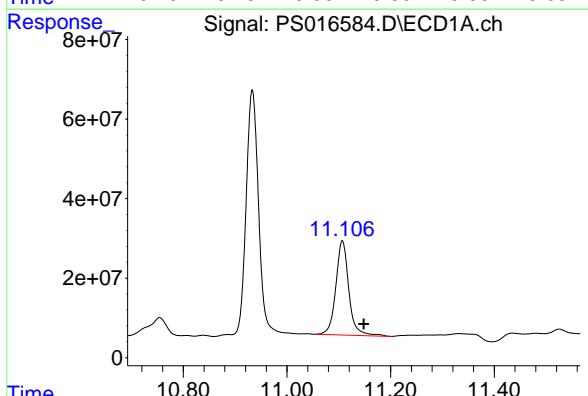


#13 2,4-DB
 R.T.: 9.961 min
 Delta R.T.: -0.028 min
 Response: 14217500
 Conc: 9.78 ng/ml

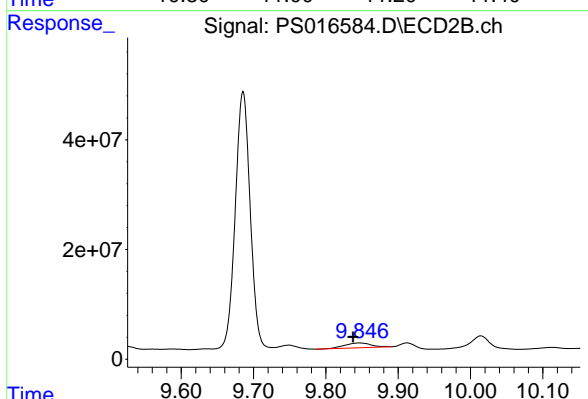
Instrument :
 ECD_S
ClientSampleId :
 SWCS-22-0306



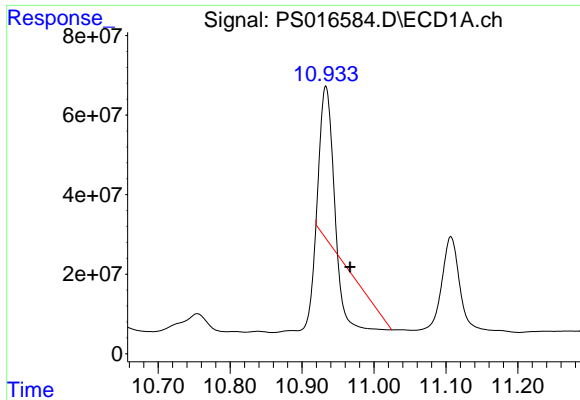
#13 2,4-DB
 R.T.: 9.525 min
 Delta R.T.: 0.015 min
 Response: 7217500
 Conc: 19.08 ng/ml



#14 DINOSEB
 R.T.: 11.107 min
 Delta R.T.: -0.041 min
 Response: 413027119
 Conc: 78.32 ng/ml

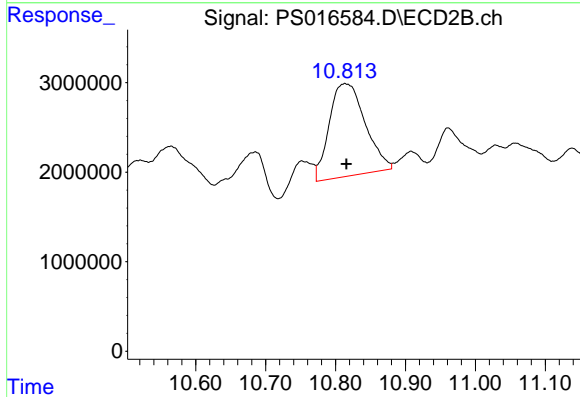


#14 DINOSEB
 R.T.: 9.846 min
 Delta R.T.: 0.009 min
 Response: 21980579
 Conc: 10.79 ng/ml

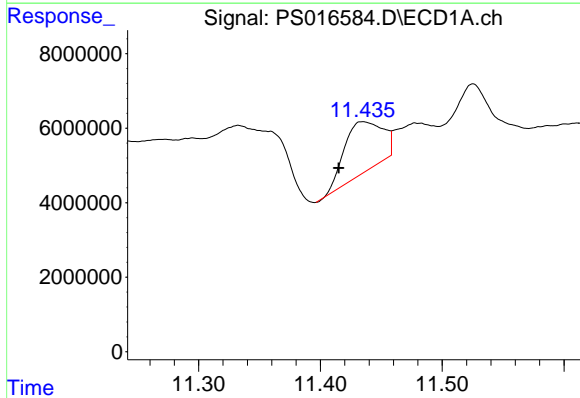


#15 Picloram
 R.T.: 10.933 min
 Delta R.T.: -0.034 min
 Response: 86377740
 Conc: 8.65 ng/ml

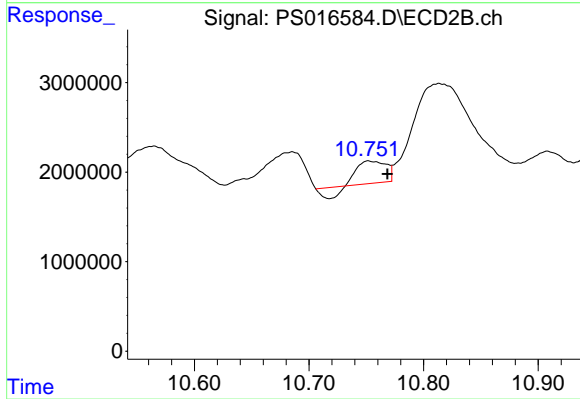
Instrument :
 ECD_S
 ClientSampleId :
 SWCS-22-0306



#15 Picloram
 R.T.: 10.813 min
 Delta R.T.: -0.002 min
 Response: 36942311
 Conc: 9.17 ng/ml



#16 DCPA
 R.T.: 11.435 min
 Delta R.T.: 0.020 min
 Response: 29721574
 Conc: 2.81 ng/ml



#16 DCPA
 R.T.: 10.752 min
 Delta R.T.: -0.017 min
 Response: 3309079
 Conc: N.D.