

Data Path : Z:\pestpcbsrv\HPCHEM1\ECD_S\Data\PS082323\
 Data File : PS024118.D
 Signal(s) : Signal #1: ECD1A.ch Signal #2: ECD2B.ch
 Acq On : 23 Aug 2023 09:52
 Operator : AR\AJ
 Sample : 04080-01
 Misc :
 ALS Vial : 4 Sample Multiplier: 1

Instrument :
 ECD_S
 ClientSampleId :

Integration File signal 1: autoint1.e
 Integration File signal 2: autoint2.e
 Quant Time: Aug 23 13:09:29 2023
 Quant Method : Z:\pestpcbsrv\HPCHEM1\ECD_S\Method\PS080823.M
 Quant Title : 8080.M
 QLast Update : Tue Aug 08 13:26:17 2023
 Response via : Initial Calibration
 Integrator: ChemStation

Volume Inj. : 2 µl
 Signal #1 Phase : Rtx-CLPesticides Signal #2 Phase: Rtx-CLPesticides2
 Signal #1 Info : 30M x 0.32mm x0.5 Signal #2 Info : 30M x 0.32mm x 0.25µm

Compound	RT#1	RT#2	Resp#1	Resp#2	ng/ml	ng/ml

System Monitoring Compounds						
4) S 2,4-DCAA	6.365	6.795	769.5E6	202.0E6	388.515	300.293
Target Compounds						
1) T Dalapon	2.455	2.516	43154741	16840247	19.667	15.401
3) T 4-Nitroph...	6.180	6.430	38593029	11405055	34.868	28.815
5) T DICAMBA	6.508	6.952	4177857	2181866	<MDL	<MDL #
6) T MCPP	6.682	7.113f	99884422	-1664173	16.016	N.D. #
7) T MCPA	6.791	7.262	22882444	4105425	2.724	1.403 #
8) T DICHLORPROP	7.129	7.584	31469636	45325349	13.986	61.996 #
9) T 2,4-D	7.295	7.861	13242083	1897629	5.344	2.228 #
10) T Pentachlo...	7.523	8.284	732.4E6	197.9E6	23.365	18.414
12) T 2,4,5-T	8.325	9.055	40627655	10558811	3.626	2.794
13) T 2,4-DB	8.820	9.516	67673630	17650871	38.027	38.722
14) T DINOSEB	9.887	9.825	15409593	28526594	1.662	9.512 #
15) T Picloram	9.685	10.801	32614736	102.7E6	2.523	20.615 #
16) T DCPA	10.134	10.801	82486231	102.7E6	5.243	19.981 #

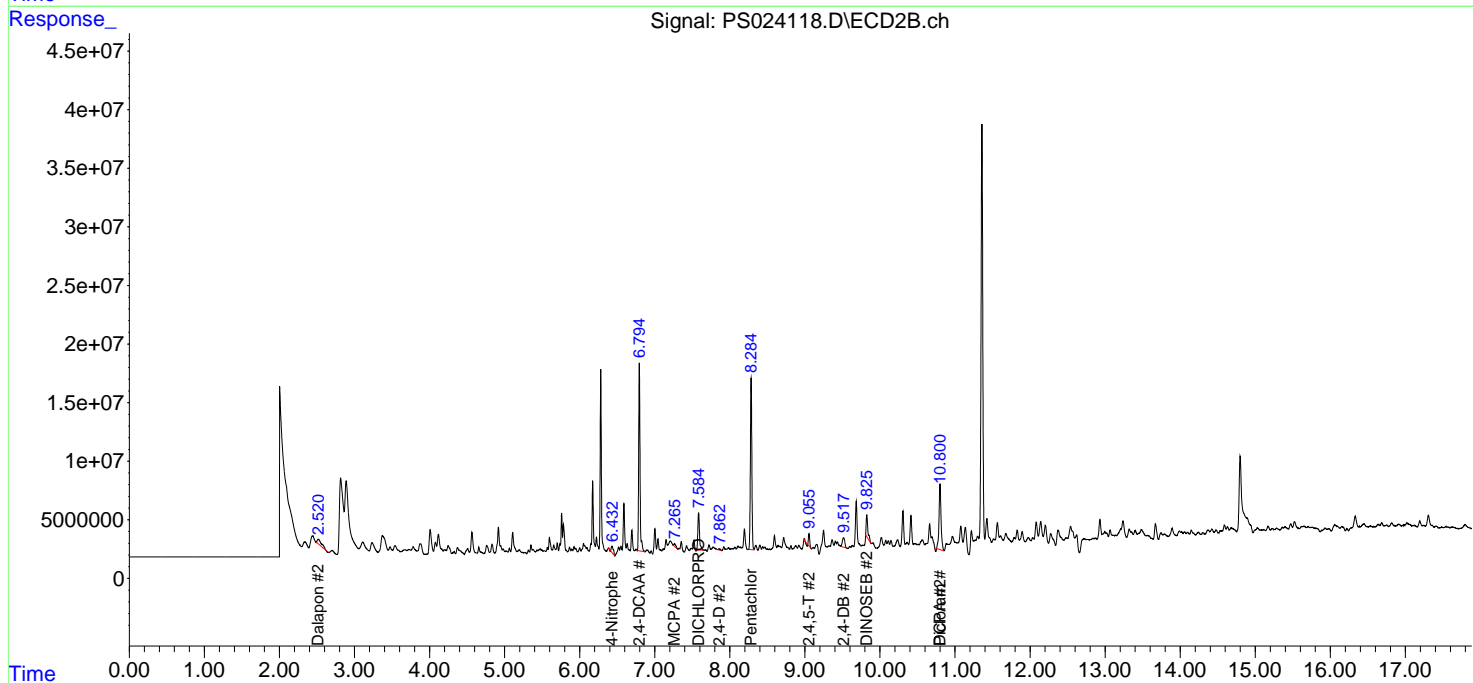
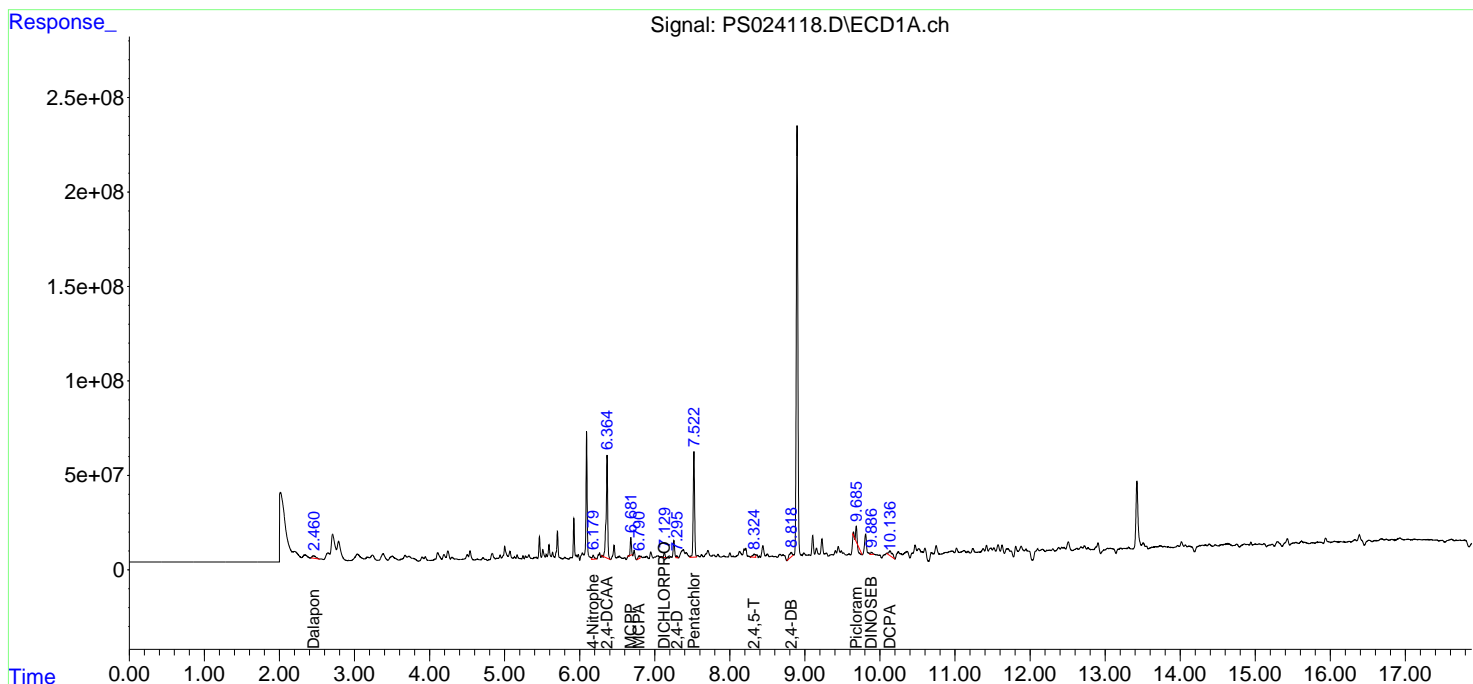
(f)=RT Delta > 1/2 Window (#)=Amounts differ by > 25% (m)=manual int.

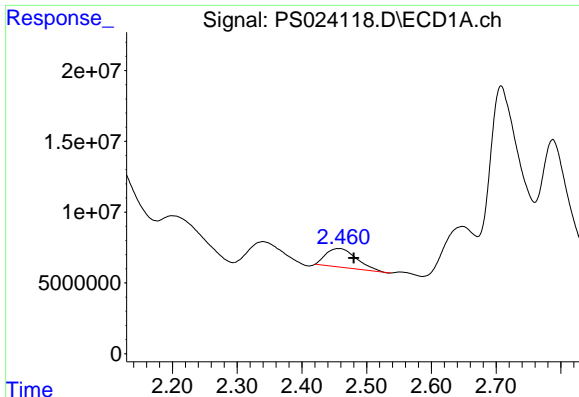
Data Path : Z:\pestpcbsrv\HPCHEM1\ECD_S\Data\PS082323\
 Data File : PS024118.D
 Signal(s) : Signal #1: ECD1A.ch Signal #2: ECD2B.ch
 Acq On : 23 Aug 2023 09:52
 Operator : AR\AJ
 Sample : 04080-01
 Misc :
 ALS Vial : 4 Sample Multiplier: 1

Instrument :
 ECD_S
 ClientSampleId :

Integration File signal 1: autoint1.e
 Integration File signal 2: autoint2.e
 Quant Time: Aug 23 13:09:29 2023
 Quant Method : Z:\pestpcbsrv\HPCHEM1\ECD_S\Method\PS080823.M
 Quant Title : 8080.M
 QLast Update : Tue Aug 08 13:26:17 2023
 Response via : Initial Calibration
 Integrator: ChemStation

Volume Inj. : 2 µl
 Signal #1 Phase : Rtx-CLPesticides Signal #2 Phase: Rtx-CLPesticides2
 Signal #1 Info : 30M x 0.32mm x0.5 Signal #2 Info : 30M x 0.32mm x 0.25µm

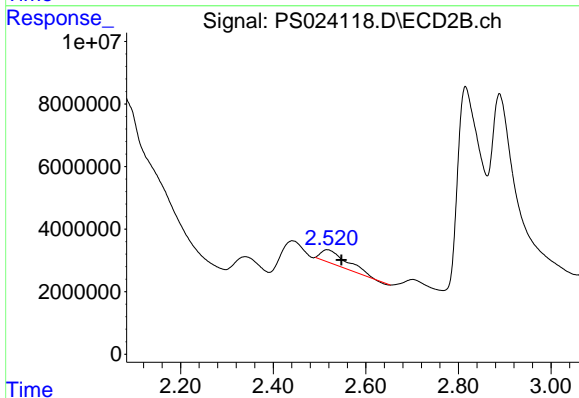




#1 Dalapon

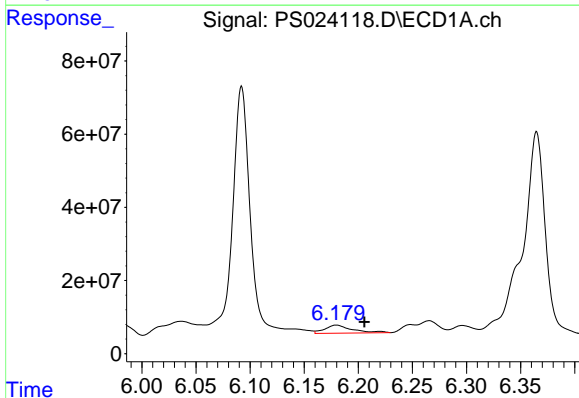
R.T.: 2.455 min
 Delta R.T.: -0.025 min
 Response: 43154741
 Conc: 19.67 ng/ml

Instrument :
 ECD_S
 ClientSampleId :



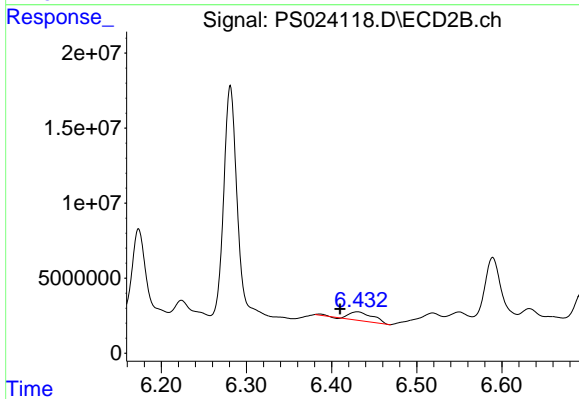
#1 Dalapon

R.T.: 2.516 min
 Delta R.T.: -0.031 min
 Response: 16840247
 Conc: 15.40 ng/ml



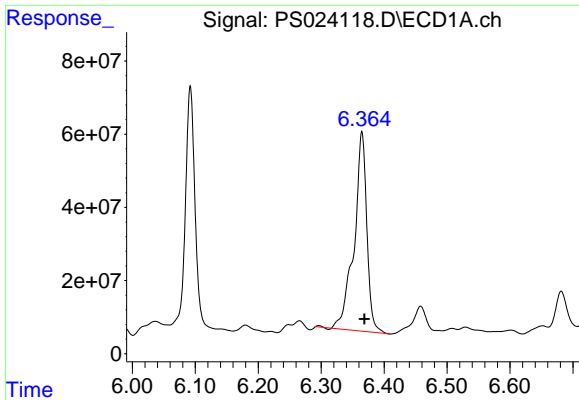
#3 4-Nitrophenol

R.T.: 6.180 min
 Delta R.T.: -0.026 min
 Response: 38593029
 Conc: 34.87 ng/ml



#3 4-Nitrophenol

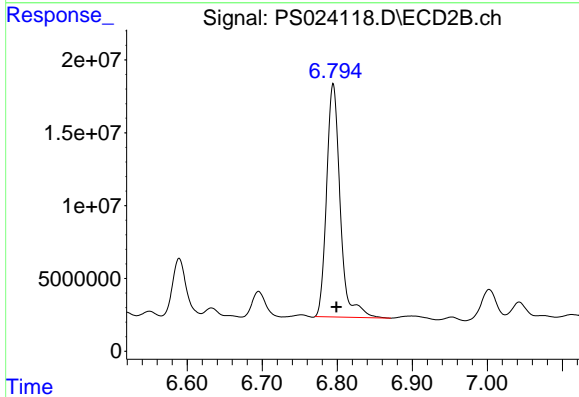
R.T.: 6.430 min
 Delta R.T.: 0.020 min
 Response: 11405055
 Conc: 28.82 ng/ml



#4 2,4-DCAA

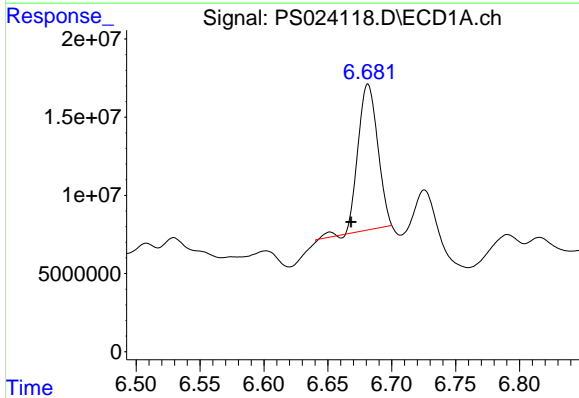
R.T.: 6.365 min
Delta R.T.: -0.004 min
Response: 769477390
Conc: 388.51 ng/ml

Instrument :
ECD_S
ClientSampleId :



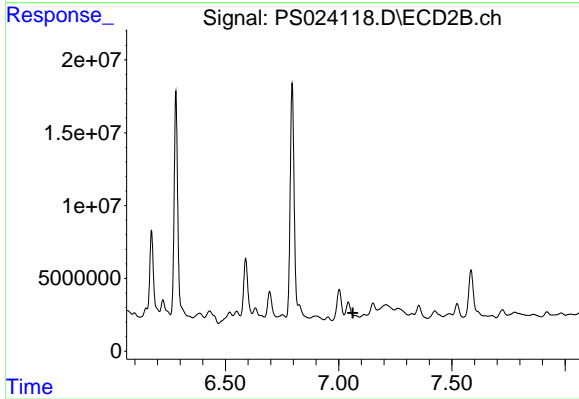
#4 2,4-DCAA

R.T.: 6.795 min
Delta R.T.: -0.004 min
Response: 201985034
Conc: 300.29 ng/ml



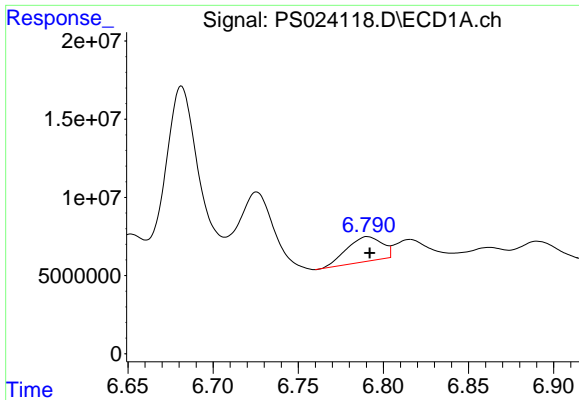
#6 MCP

R.T.: 6.682 min
Delta R.T.: 0.013 min
Response: 99884422
Conc: 16.02 ug/ml



#6 MCP

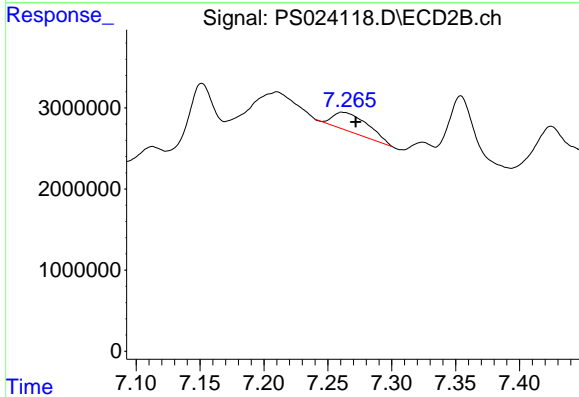
R.T.: 7.113 min
Delta R.T.: 0.050 min
Response: -1664173
Conc: N.D.



#7 MCPA

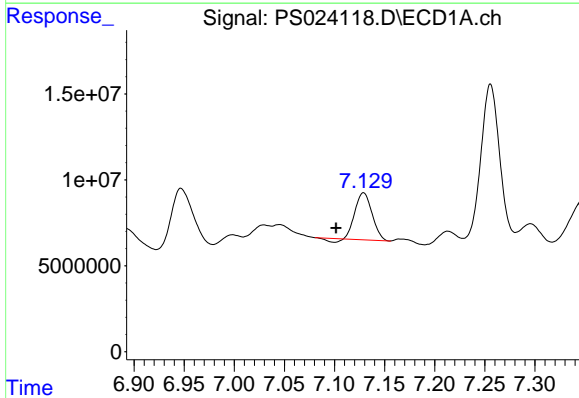
R.T.: 6.791 min
 Delta R.T.: -0.001 min
 Response: 22882444
 Conc: 2.72 ug/ml

Instrument :
 ECD_S
 ClientSampleId :



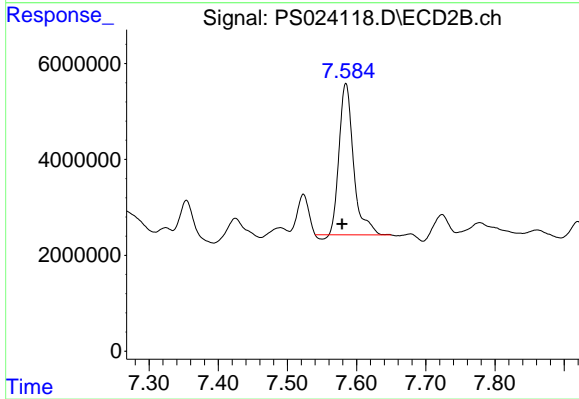
#7 MCPA

R.T.: 7.262 min
 Delta R.T.: -0.010 min
 Response: 4105425
 Conc: 1.40 ug/ml



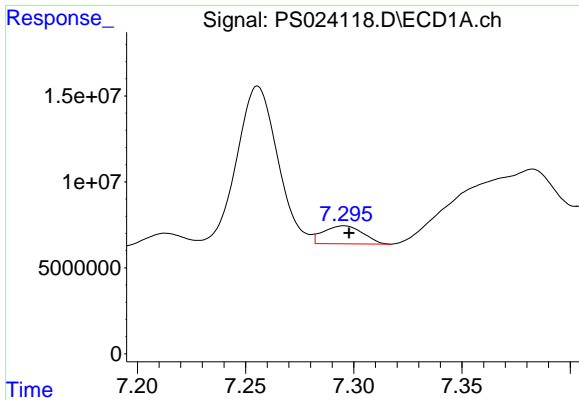
#8 DICHLORPROP

R.T.: 7.129 min
 Delta R.T.: 0.027 min
 Response: 31469636
 Conc: 13.99 ng/ml



#8 DICHLORPROP

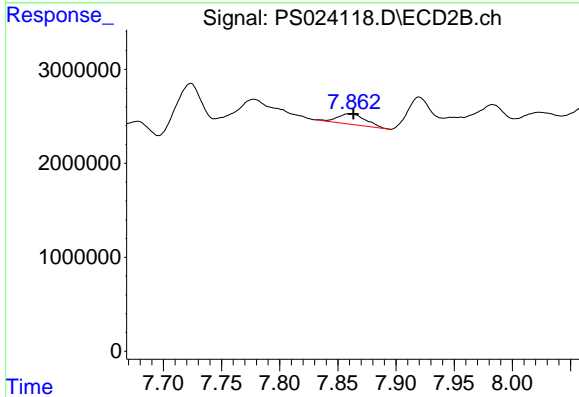
R.T.: 7.584 min
 Delta R.T.: 0.005 min
 Response: 45325349
 Conc: 62.00 ng/ml



#9 2,4-D

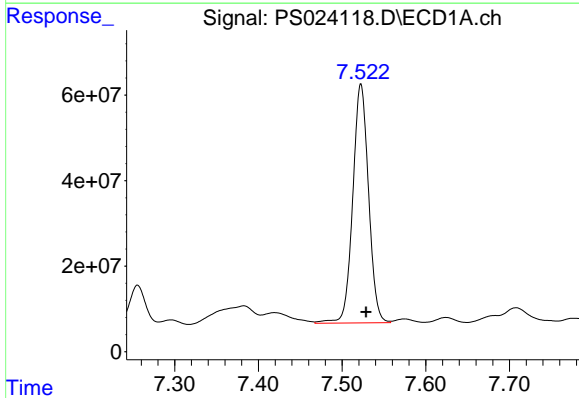
R.T.: 7.295 min
 Delta R.T.: -0.003 min
 Response: 13242083
 Conc: 5.34 ng/ml

Instrument :
 ECD_S
 ClientSampleId :



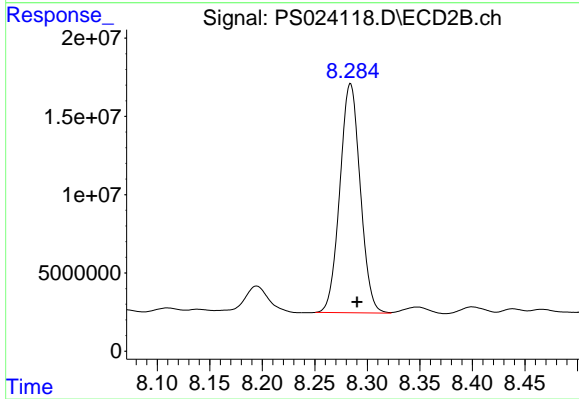
#9 2,4-D

R.T.: 7.861 min
 Delta R.T.: -0.003 min
 Response: 1897629
 Conc: 2.23 ng/ml



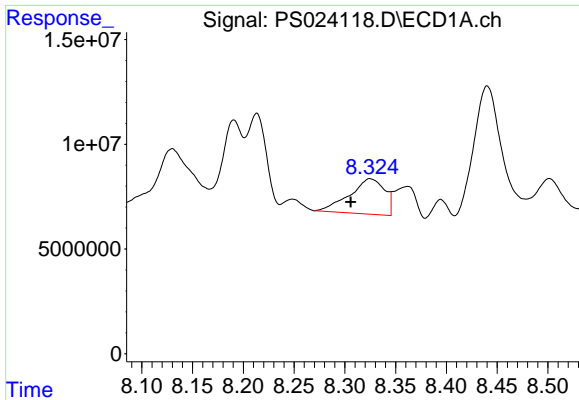
#10 Pentachlorophenol

R.T.: 7.523 min
 Delta R.T.: -0.006 min
 Response: 732448876
 Conc: 23.37 ng/ml



#10 Pentachlorophenol

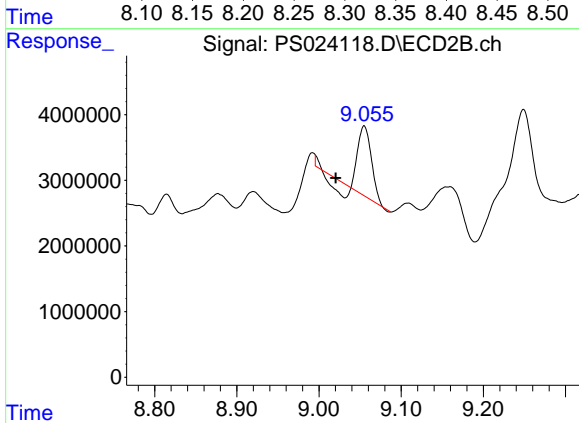
R.T.: 8.284 min
 Delta R.T.: -0.006 min
 Response: 197853696
 Conc: 18.41 ng/ml



#12 2,4,5-T

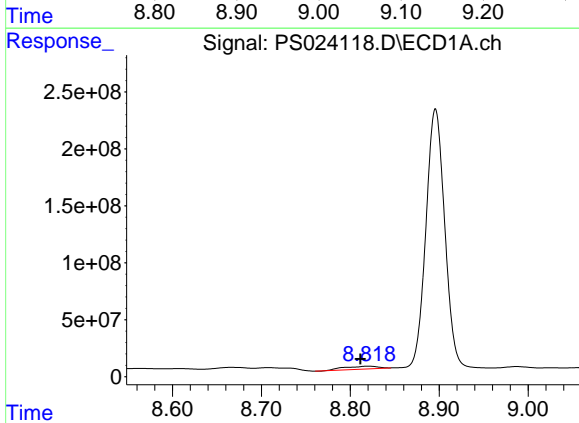
R.T.: 8.325 min
 Delta R.T.: 0.019 min
 Response: 40627655
 Conc: 3.63 ng/ml

Instrument :
 ECD_S
 ClientSampleId :



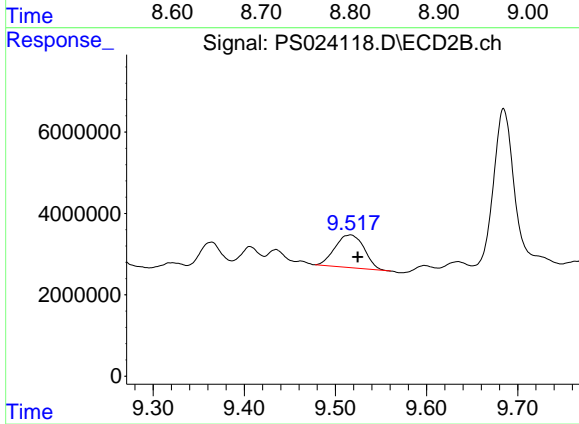
#12 2,4,5-T

R.T.: 9.055 min
 Delta R.T.: 0.035 min
 Response: 10558811
 Conc: 2.79 ng/ml



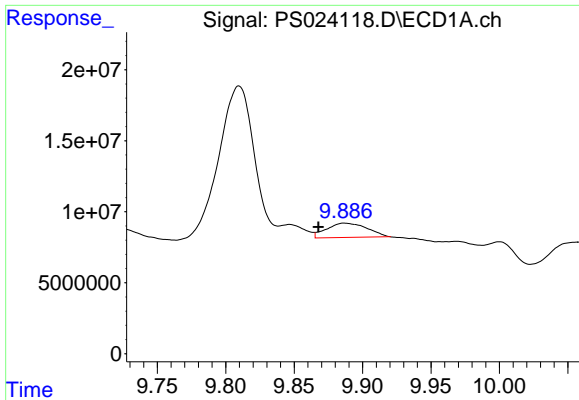
#13 2,4-DB

R.T.: 8.820 min
 Delta R.T.: 0.009 min
 Response: 67673630
 Conc: 38.03 ng/ml



#13 2,4-DB

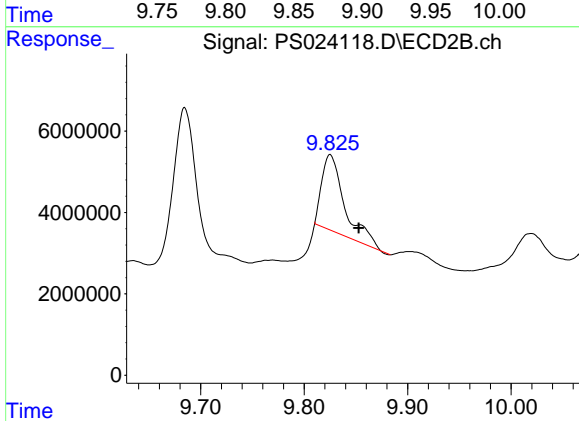
R.T.: 9.516 min
 Delta R.T.: -0.009 min
 Response: 17650871
 Conc: 38.72 ng/ml



#14 DINOSEB

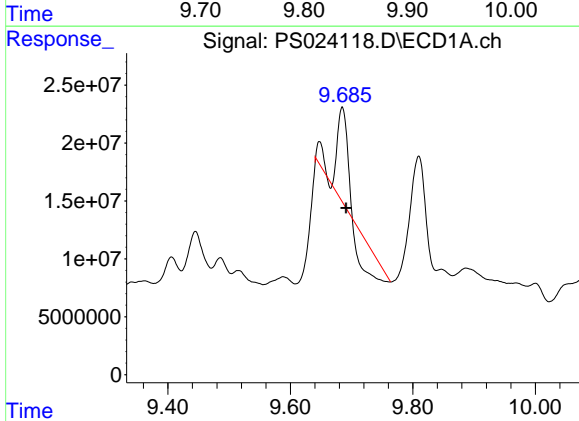
R.T.: 9.887 min
 Delta R.T.: 0.020 min
 Response: 15409593
 Conc: 1.66 ng/ml

Instrument :
 ECD_S
 ClientSampleId :



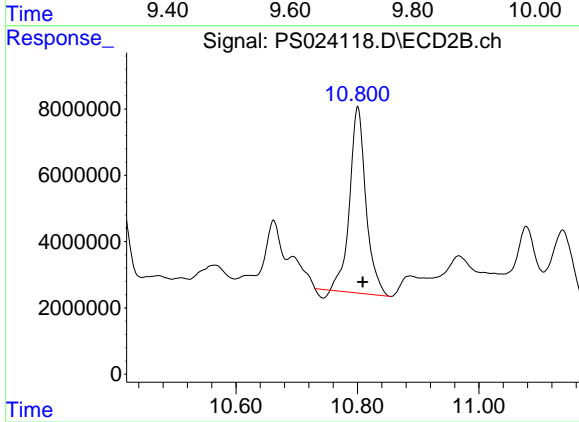
#14 DINOSEB

R.T.: 9.825 min
 Delta R.T.: -0.027 min
 Response: 28526594
 Conc: 9.51 ng/ml



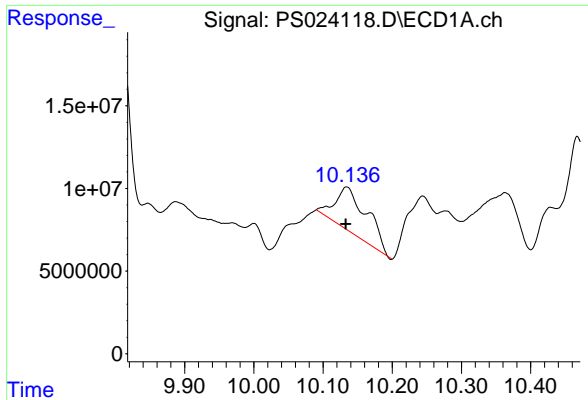
#15 Picloram

R.T.: 9.685 min
 Delta R.T.: -0.006 min
 Response: 32614736
 Conc: 2.52 ng/ml



#15 Picloram

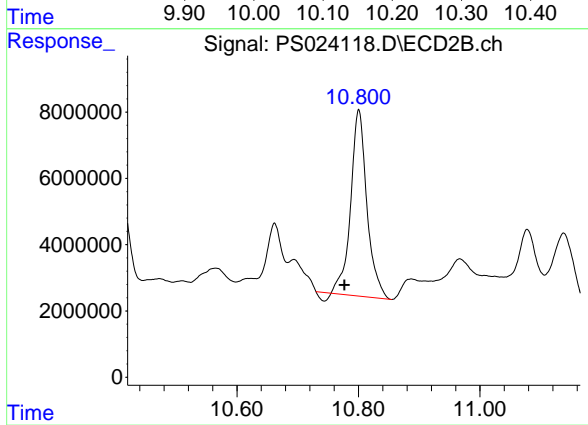
R.T.: 10.801 min
 Delta R.T.: -0.008 min
 Response: 102722696
 Conc: 20.62 ng/ml



#16 DCPA

R.T.: 10.134 min
Delta R.T.: 0.001 min
Response: 82486231
Conc: 5.24 ng/ml

Instrument :
ECD_S
ClientSampleId :



#16 DCPA

R.T.: 10.801 min
Delta R.T.: 0.024 min
Response: 102722696
Conc: 19.98 ng/ml