

Data Path : Z:\pestpcbsrv\HPCHEM1\ECD_S\Data\PS082323\
 Data File : PS024148.D
 Signal(s) : Signal #1: ECD1A.ch Signal #2: ECD2B.ch
 Acq On : 24 Aug 2023 00:30
 Operator : AR\AJ
 Sample : HSTDCCC750
 Misc :
 ALS Vial : 3 Sample Multiplier: 1

Instrument :
 ECD_S
 ClientSampleId :

Integration File signal 1: autoint1.e
 Integration File signal 2: autoint2.e
 Quant Time: Aug 24 04:40:15 2023
 Quant Method : Z:\pestpcbsrv\HPCHEM1\ECD_S\Method\PS080823.M
 Quant Title : 8080.M
 QLast Update : Tue Aug 08 13:26:17 2023
 Response via : Initial Calibration
 Integrator: ChemStation

Volume Inj. : 2 µl
 Signal #1 Phase : Rtx-CLPesticides Signal #2 Phase: Rtx-CLPesticides2
 Signal #1 Info : 30M x 0.32mm x0.5 Signal #2 Info : 30M x 0.32mm x 0.25µm

| | Compound | RT#1 | RT#2 | Resp#1 | Resp#2 | ng/ml | ng/ml |
|-----------------------------|--------------|--------|--------|-----------|----------|---------|---------|
| ----- | | | | | | | |
| System Monitoring Compounds | | | | | | | |
| 4) S | 2,4-DCAA | 6.365 | 6.795 | 1402.8E6 | 478.3E6 | 708.283 | 711.072 |
| Target Compounds | | | | | | | |
| 1) T | Dalapon | 2.480 | 2.547 | 1369.4E6 | 666.6E6 | 624.110 | 609.643 |
| 3) T | 4-Nitroph... | 6.202 | 6.407 | 802.7E6 | 271.9E6 | 725.250 | 686.915 |
| 5) T | DICAMBA | 6.507 | 6.958 | 5933.8E6 | 1961.1E6 | 674.537 | 668.694 |
| 6) T | MCPP | 6.659 | 7.055 | 416.9E6 | 117.4E6 | 66.848 | 60.692 |
| 7) T | MCPA | 6.782 | 7.262 | 578.2E6 | 187.2E6 | 68.830 | 63.980 |
| 8) T | DICHLORPROP | 7.096 | 7.574 | 1506.0E6 | 503.0E6 | 669.303 | 688.037 |
| 9) T | 2,4-D | 7.293 | 7.858 | 1778.2E6 | 594.2E6 | 717.598 | 697.561 |
| 10) T | Pentachlo... | 7.523 | 8.284 | 21878.4E6 | 7397.4E6 | 697.919 | 688.461 |
| 11) T | 2,4,5-TP ... | 8.044 | 8.642 | 9182.9E6 | 2861.4E6 | 702.200 | 695.944 |
| 12) T | 2,4,5-T | 8.299 | 9.012 | 8407.1E6 | 2764.2E6 | 750.368 | 731.497 |
| 13) T | 2,4-DB | 8.804 | 9.517 | 1370.6E6 | 342.4E6 | 770.159 | 751.129 |
| 14) T | DINOSEB | 9.859 | 9.845 | 6570.2E6 | 2065.2E6 | 708.785 | 688.637 |
| 15) T | Picloram | 9.683 | 10.800 | 10836.5E6 | 3924.0E6 | 838.124 | 787.492 |
| 16) T | DCPA | 10.124 | 10.768 | 11033.5E6 | 3623.0E6 | 701.338 | 704.722 |
| ----- | | | | | | | |

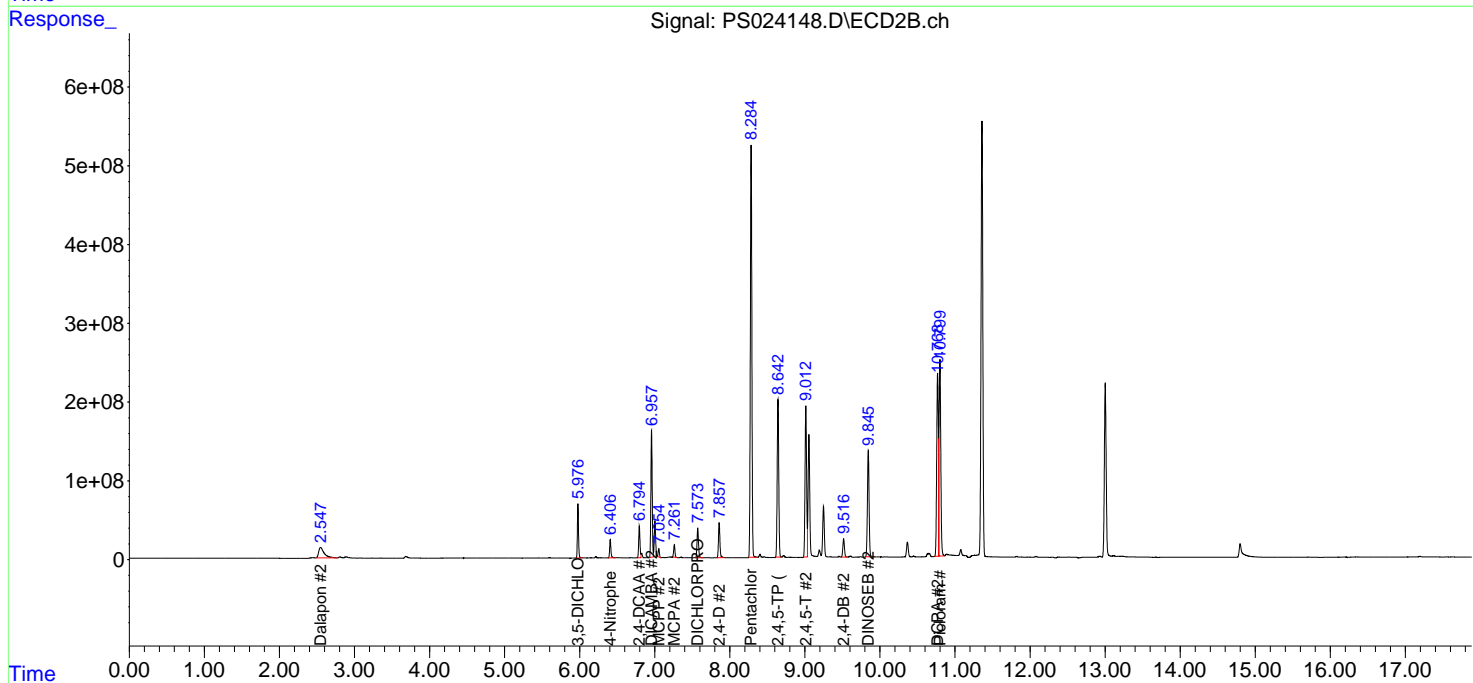
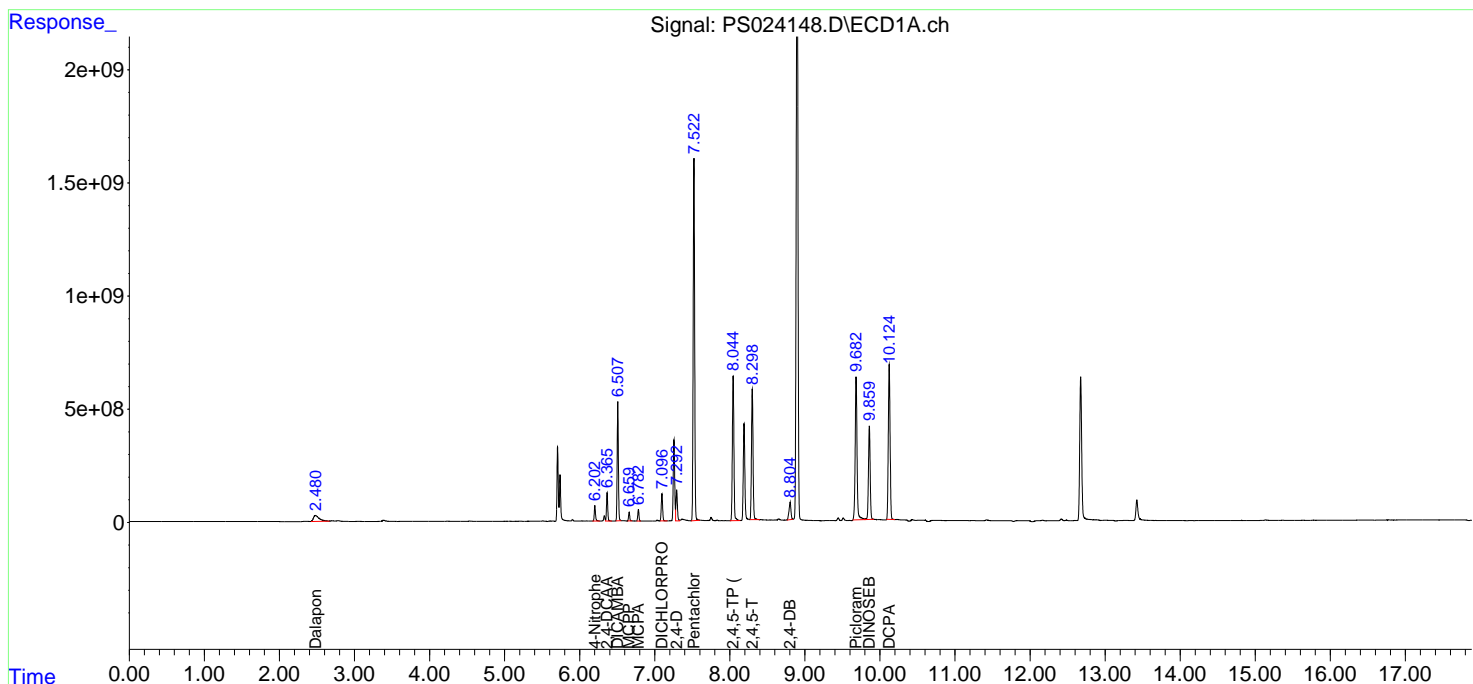
(f)=RT Delta > 1/2 Window (#)=Amounts differ by > 25% (m)=manual int.

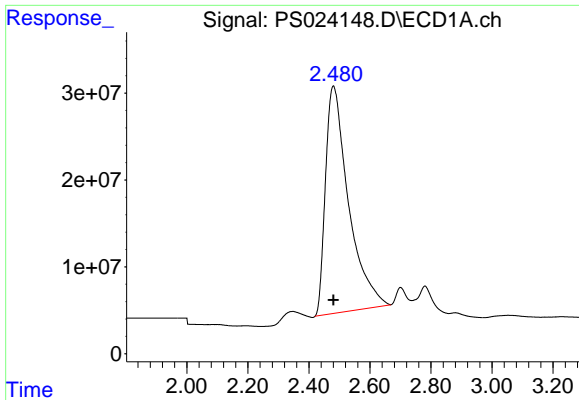
Data Path : Z:\pestpcbsrv\HPCHEM1\ECD_S\Data\PS082323\
 Data File : PS024148.D
 Signal(s) : Signal #1: ECD1A.ch Signal #2: ECD2B.ch
 Acq On : 24 Aug 2023 00:30
 Operator : AR\AJ
 Sample : HSTDCCC750
 Misc :
 ALS Vial : 3 Sample Multiplier: 1

Instrument :
 ECD_S
 ClientSampleId :

Integration File signal 1: autoint1.e
 Integration File signal 2: autoint2.e
 Quant Time: Aug 24 04:40:15 2023
 Quant Method : Z:\pestpcbsrv\HPCHEM1\ECD_S\Method\PS080823.M
 Quant Title : 8080.M
 QLast Update : Tue Aug 08 13:26:17 2023
 Response via : Initial Calibration
 Integrator: ChemStation

Volume Inj. : 2 µl
 Signal #1 Phase : Rtx-CLPesticides Signal #2 Phase: Rtx-CLPesticides2
 Signal #1 Info : 30M x 0.32mm x0.5 Signal #2 Info : 30M x 0.32mm x 0.25µm

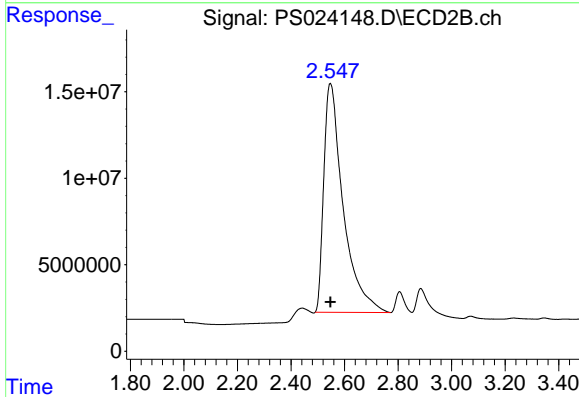




#1 Dalapon

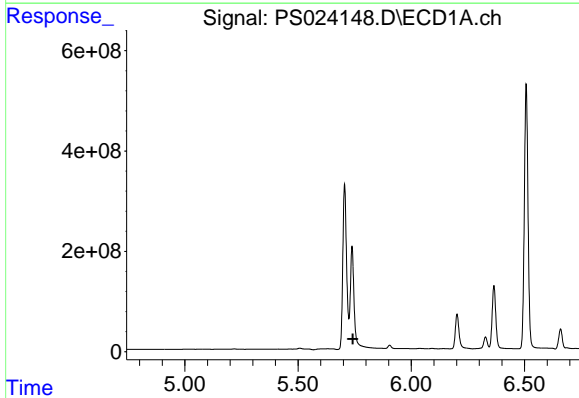
R.T.: 2.480 min
 Delta R.T.: 0.000 min
 Response: 1369449914
 Conc: 624.11 ng/ml

Instrument :
 ECD_S
 ClientSampleId :



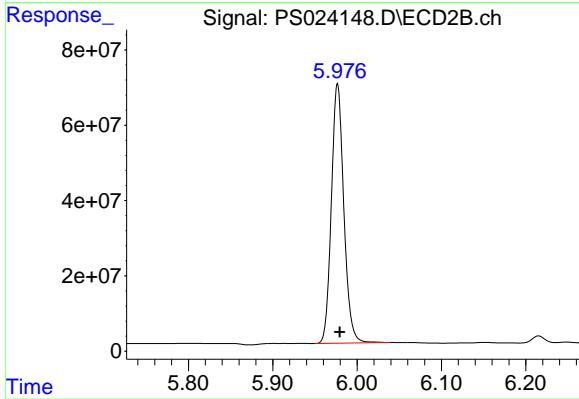
#1 Dalapon

R.T.: 2.547 min
 Delta R.T.: 0.000 min
 Response: 666618174
 Conc: 609.64 ng/ml



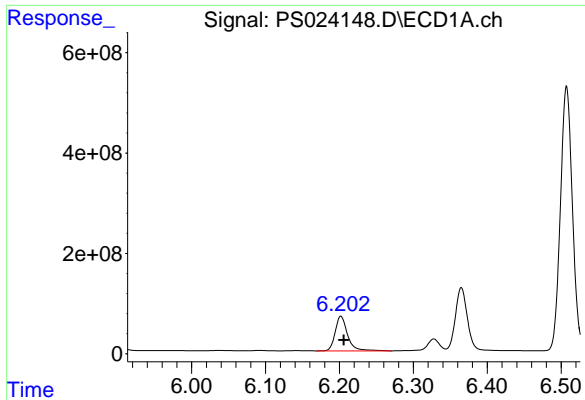
#2 3,5-DICHLOROBENZOIC ACID

R.T.: 5.738 min
 Delta R.T.: -0.003 min
 Response: -3811332602
 Conc: N.D.



#2 3,5-DICHLOROBENZOIC ACID

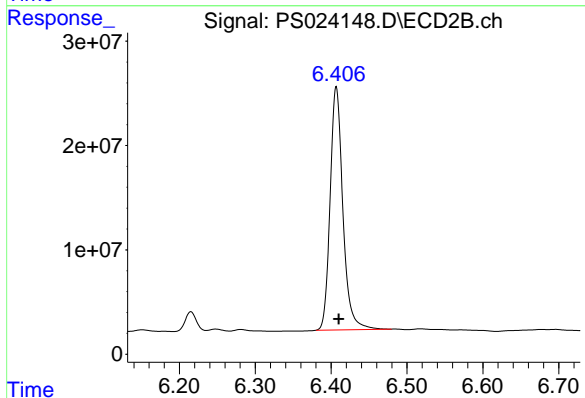
R.T.: 5.977 min
 Delta R.T.: -0.003 min
 Response: 706624147
 Conc: 674.39 ng/ml



#3 4-Nitrophenol

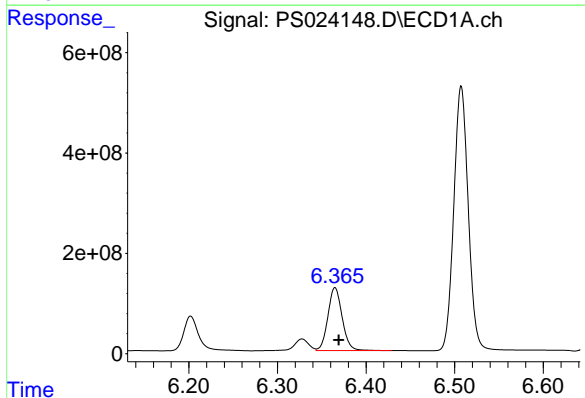
R.T.: 6.202 min
Delta R.T.: -0.004 min
Response: 802721006
Conc: 725.25 ng/ml

Instrument :
ECD_S
ClientSampleId :



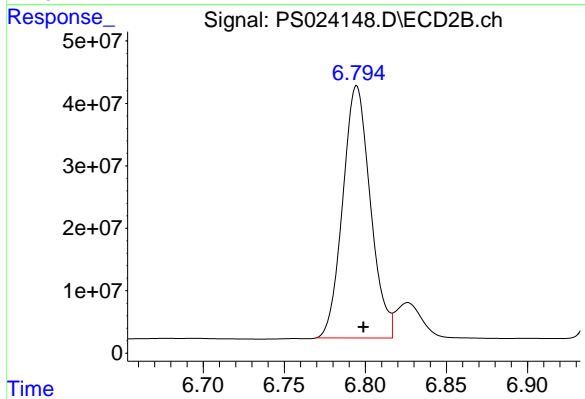
#3 4-Nitrophenol

R.T.: 6.407 min
Delta R.T.: -0.003 min
Response: 271879843
Conc: 686.91 ng/ml



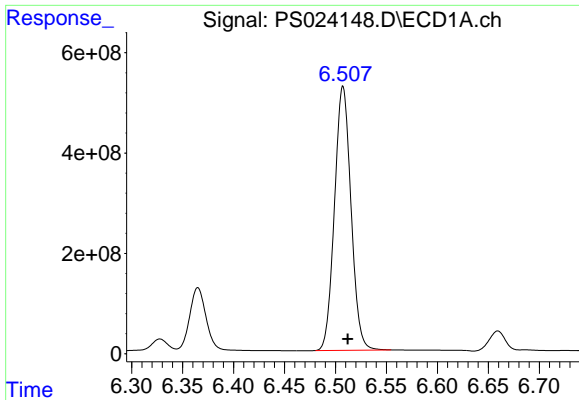
#4 2,4-DCAA

R.T.: 6.365 min
Delta R.T.: -0.004 min
Response: 1402798854
Conc: 708.28 ng/ml



#4 2,4-DCAA

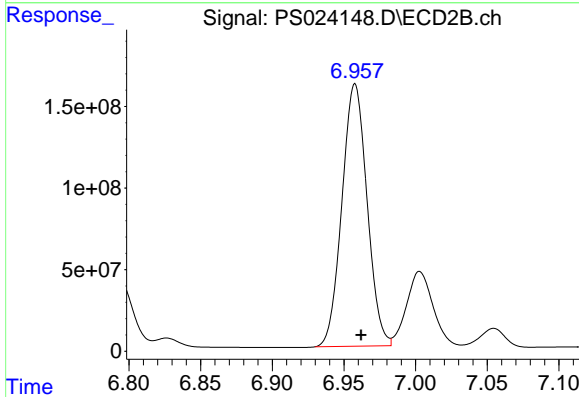
R.T.: 6.795 min
Delta R.T.: -0.004 min
Response: 478286644
Conc: 711.07 ng/ml



#5 DICAMBA

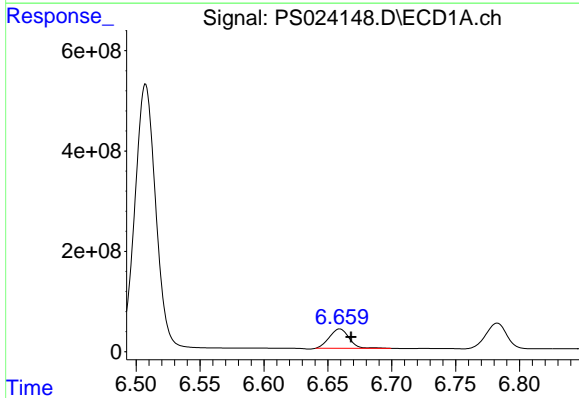
R.T.: 6.507 min
 Delta R.T.: -0.005 min
 Response: 5933784290
 Conc: 674.54 ng/ml

Instrument :
 ECD_S
 ClientSampleId :



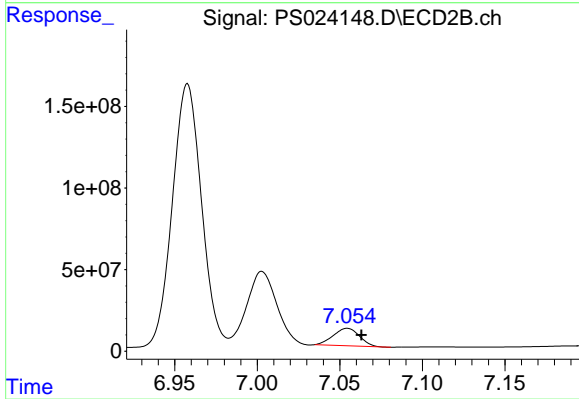
#5 DICAMBA

R.T.: 6.958 min
 Delta R.T.: -0.004 min
 Response: 1961134048
 Conc: 668.69 ng/ml



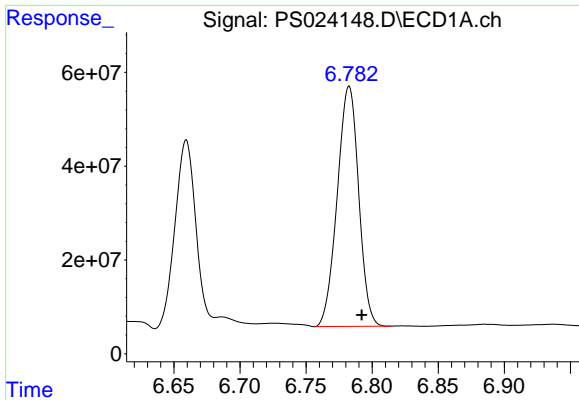
#6 MCPP

R.T.: 6.659 min
 Delta R.T.: -0.009 min
 Response: 416897967
 Conc: 66.85 ug/ml



#6 MCPP

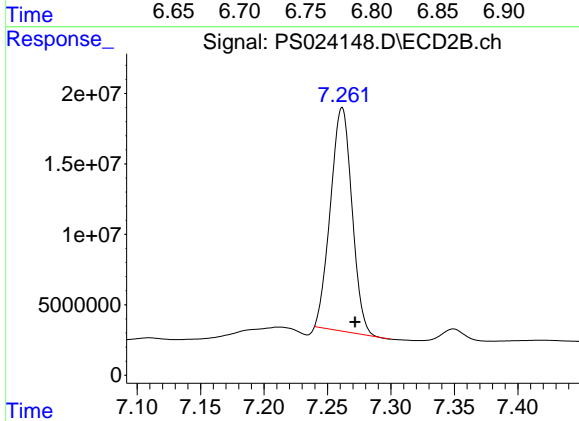
R.T.: 7.055 min
 Delta R.T.: -0.008 min
 Response: 117416202
 Conc: 60.69 ug/ml



#7 MCPA

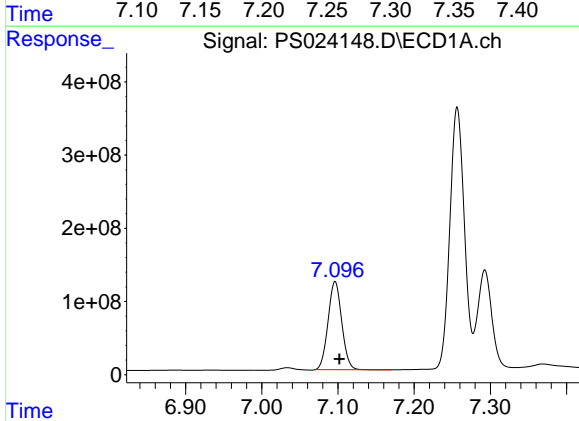
R.T.: 6.782 min
 Delta R.T.: -0.010 min
 Response: 578168183
 Conc: 68.83 ug/ml

Instrument :
 ECD_S
 ClientSampleId :



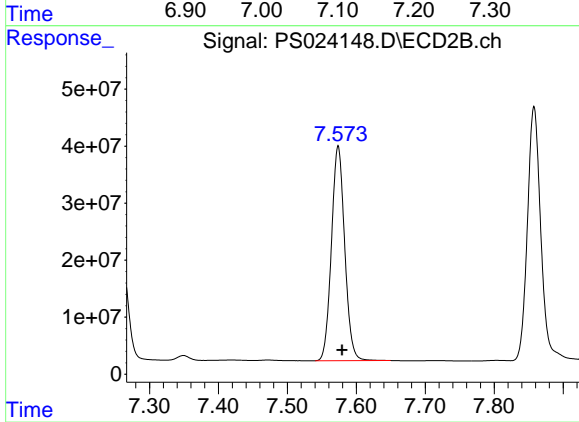
#7 MCPA

R.T.: 7.262 min
 Delta R.T.: -0.010 min
 Response: 187171932
 Conc: 63.98 ug/ml



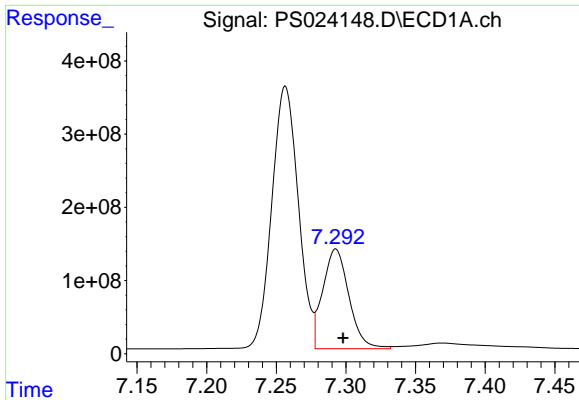
#8 DICHLORPROP

R.T.: 7.096 min
 Delta R.T.: -0.006 min
 Response: 1506024877
 Conc: 669.30 ng/ml



#8 DICHLORPROP

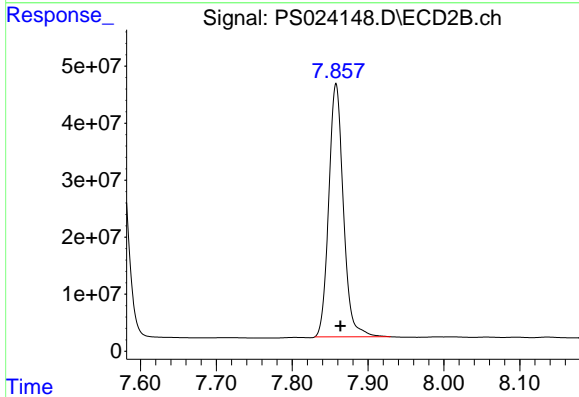
R.T.: 7.574 min
 Delta R.T.: -0.005 min
 Response: 503023587
 Conc: 688.04 ng/ml



#9 2,4-D

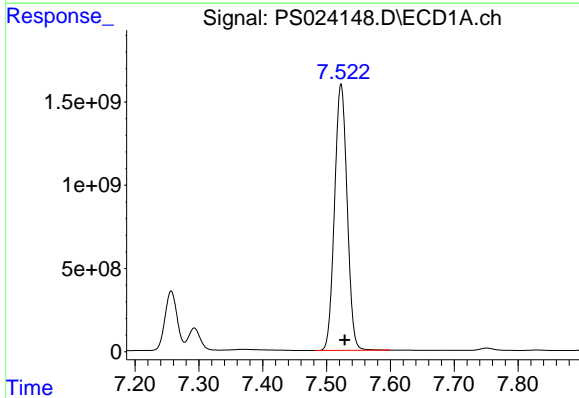
R.T.: 7.293 min
 Delta R.T.: -0.005 min
 Response: 1778246709
 Conc: 717.60 ng/ml

Instrument :
 ECD_S
 ClientSampleId :



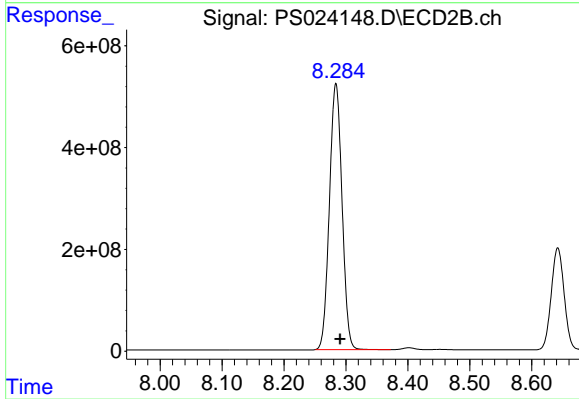
#9 2,4-D

R.T.: 7.858 min
 Delta R.T.: -0.006 min
 Response: 594229127
 Conc: 697.56 ng/ml



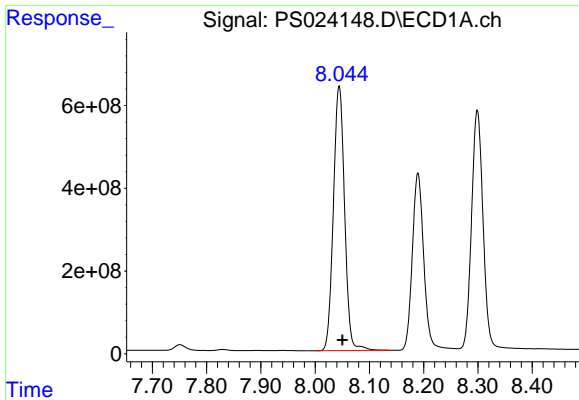
#10 Pentachlorophenol

R.T.: 7.523 min
 Delta R.T.: -0.006 min
 Response: 21878402468
 Conc: 697.92 ng/ml



#10 Pentachlorophenol

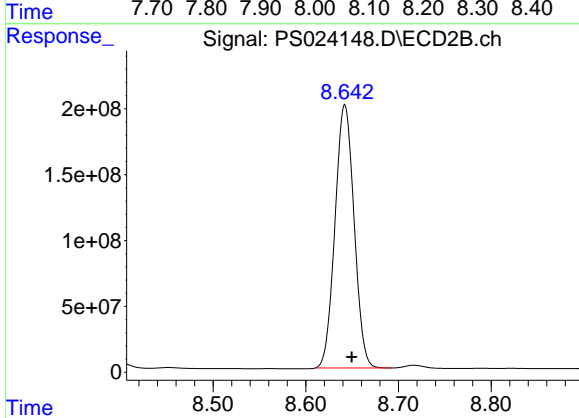
R.T.: 8.284 min
 Delta R.T.: -0.006 min
 Response: 7397382194
 Conc: 688.46 ng/ml



#11 2,4,5-TP (SILVEX)

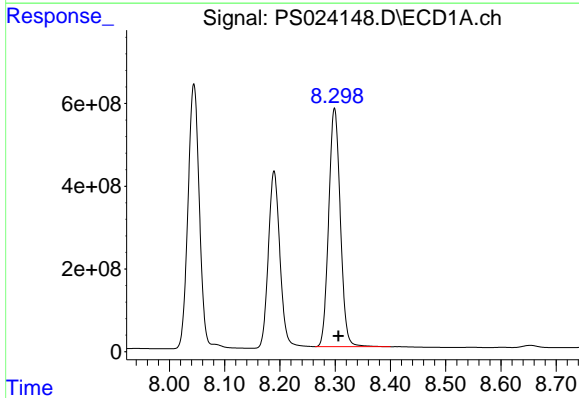
R.T.: 8.044 min
 Delta R.T.: -0.006 min
 Response: 9182928572
 Conc: 702.20 ng/ml

Instrument :
 ECD_S
 ClientSampleId :



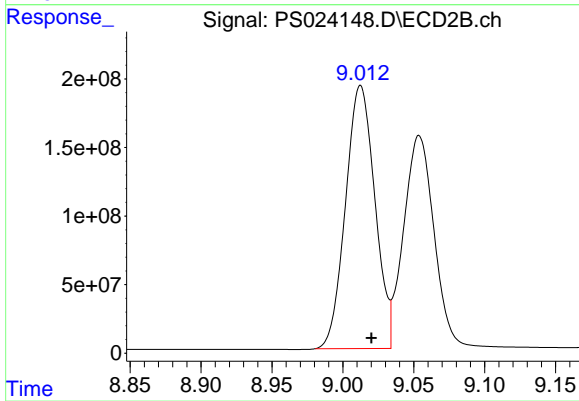
#11 2,4,5-TP (SILVEX)

R.T.: 8.642 min
 Delta R.T.: -0.007 min
 Response: 2861381034
 Conc: 695.94 ng/ml



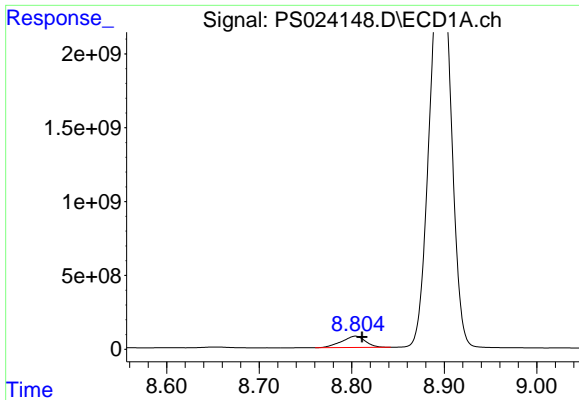
#12 2,4,5-T

R.T.: 8.299 min
 Delta R.T.: -0.007 min
 Response: 8407143646
 Conc: 750.37 ng/ml



#12 2,4,5-T

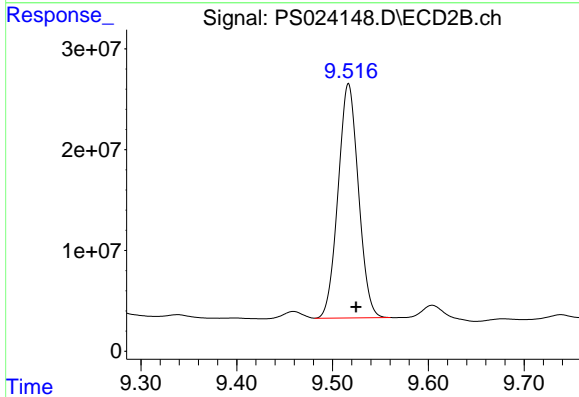
R.T.: 9.012 min
 Delta R.T.: -0.008 min
 Response: 2764222311
 Conc: 731.50 ng/ml



#13 2,4-DB

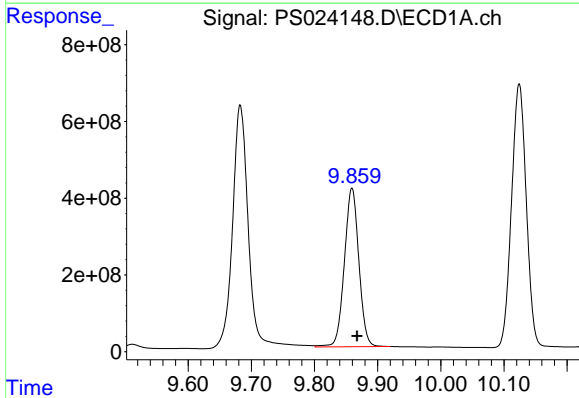
R.T.: 8.804 min
 Delta R.T.: -0.007 min
 Response: 1370573095
 Conc: 770.16 ng/ml

Instrument :
 ECD_S
 ClientSampleId :



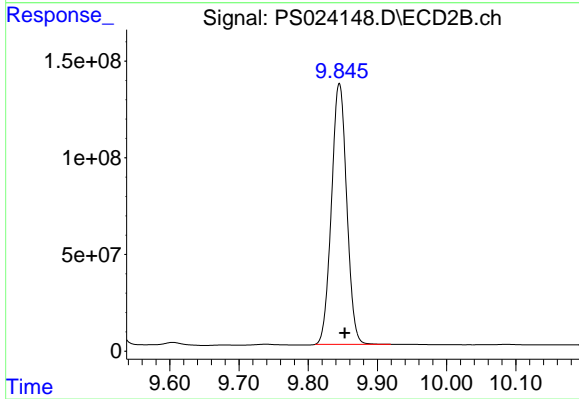
#13 2,4-DB

R.T.: 9.517 min
 Delta R.T.: -0.008 min
 Response: 342387556
 Conc: 751.13 ng/ml



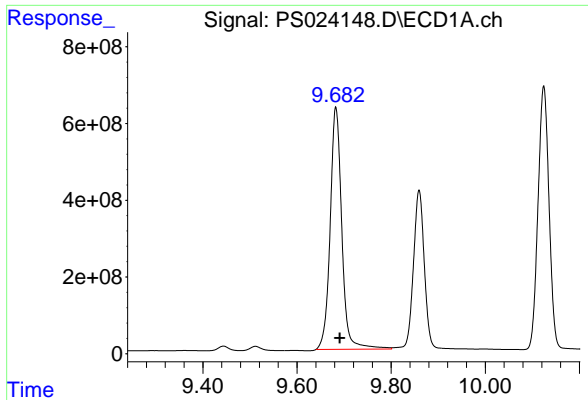
#14 DINOSEB

R.T.: 9.859 min
 Delta R.T.: -0.008 min
 Response: 6570227236
 Conc: 708.79 ng/ml



#14 DINOSEB

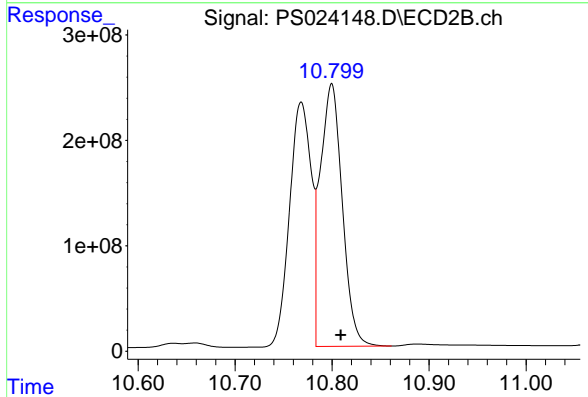
R.T.: 9.845 min
 Delta R.T.: -0.008 min
 Response: 2065244155
 Conc: 688.64 ng/ml



#15 Picloram

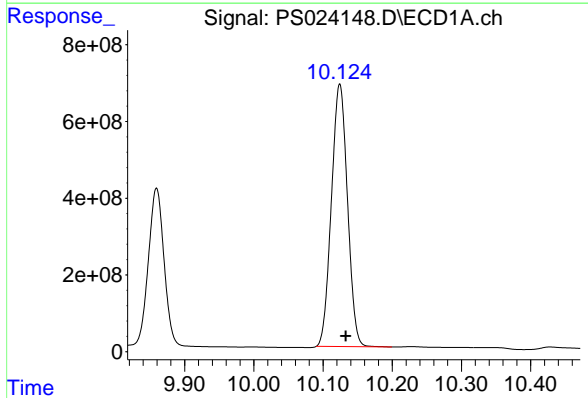
R.T.: 9.683 min
 Delta R.T.: -0.008 min
 Response: 10836479285
 Conc: 838.12 ng/ml

Instrument :
 ECD_S
 ClientSampleId :



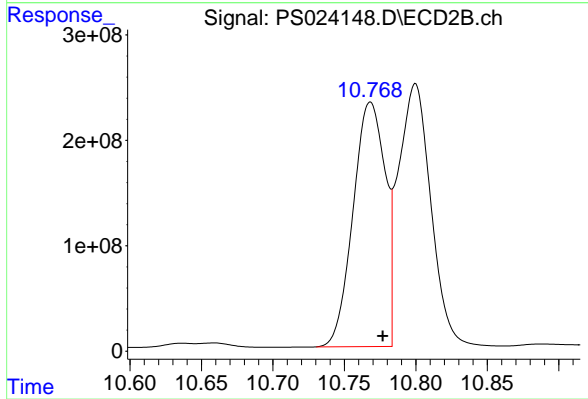
#15 Picloram

R.T.: 10.800 min
 Delta R.T.: -0.009 min
 Response: 3923992038
 Conc: 787.49 ng/ml



#16 DCPA

R.T.: 10.124 min
 Delta R.T.: -0.009 min
 Response: 11033512338
 Conc: 701.34 ng/ml



#16 DCPA

R.T.: 10.768 min
 Delta R.T.: -0.009 min
 Response: 3622969757
 Conc: 704.72 ng/ml