

Data Path : Z:\pestpcbsrv\HPCHEM1\ECD_S\Data\PS082421\
 Data File : PS016595.D
 Signal(s) : Signal #1: ECD1A.ch Signal #2: ECD2B.ch
 Acq On : 24 Aug 2021 09:50
 Operator : DD\AJ
 Sample : I.BLK
 Misc :
 ALS Vial : 2 Sample Multiplier: 1

Instrument :
 ECD_S
 ClientSampleId :
 I.BLK

Integration File signal 1: autoint1.e
 Integration File signal 2: autoint2.e
 Quant Time: Aug 25 06:58:18 2021
 Quant Method : Z:\pestpcbsrv\HPCHEM1\ECD_S\Method\PS080221.M
 Quant Title : 8080.M
 QLast Update : Mon Aug 02 14:10:19 2021
 Response via : Initial Calibration
 Integrator: ChemStation

Volume Inj. : 2 µl
 Signal #1 Phase : Rtx-CLPesticides Signal #2 Phase: Rtx-CLPesticides2
 Signal #1 Info : 30M x 0.32mm x0.5 Signal #2 Info : 30M x 0.32mm x 0.25µm

	Compound	RT#1	RT#2	Resp#1	Resp#2	ng/ml	ng/ml

System Monitoring Compounds							
4) S	2,4-DCAA	7.182	6.764	592.1E6	267.3E6	402.514	512.459 #
Target Compounds							
5) T	DICAMBA	7.373	6.927	10680470	5477228	1.907	2.513 #
8) T	DICHLORPROP	0.000	7.550	0	140261	N.D.	<MDL
9) T	2,4-D	8.365f	7.846	100.9E6	2825313	66.700	4.459 #
10) T	Pentachlo...	8.602	8.264	14941526	7723288	<MDL	1.043 #
11) T	2,4,5-TP ...	9.153	8.625	11761223	6686635	1.627	2.292 #
12) T	2,4,5-T	9.445	9.007	33742581	11295500	4.426	3.900
14) T	DINOSEB	11.142	9.834	20402840	5748740	3.869	2.822 #
15) T	Picloram	10.974	10.817	369.3E6	166.4E6	37.002	41.331
16) T	DCPA	11.409	10.762	23538507	12169374	2.227	2.707

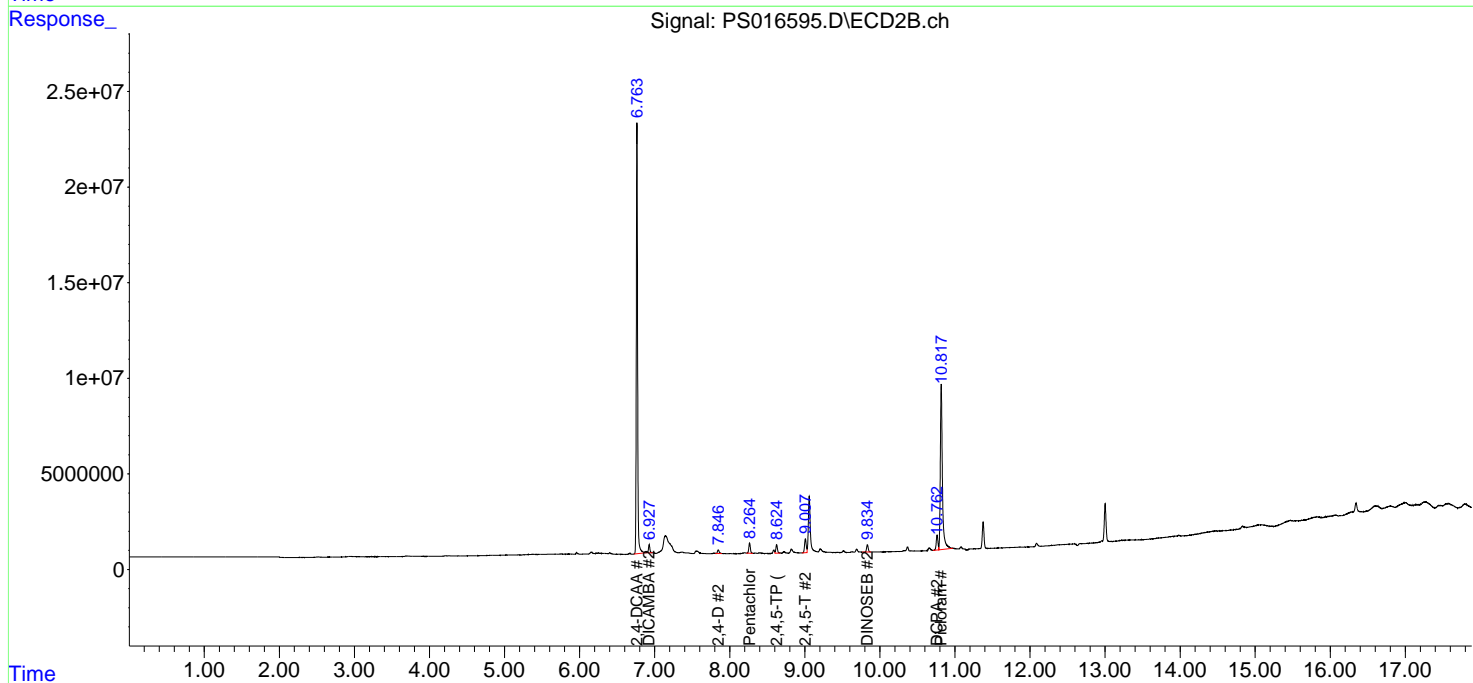
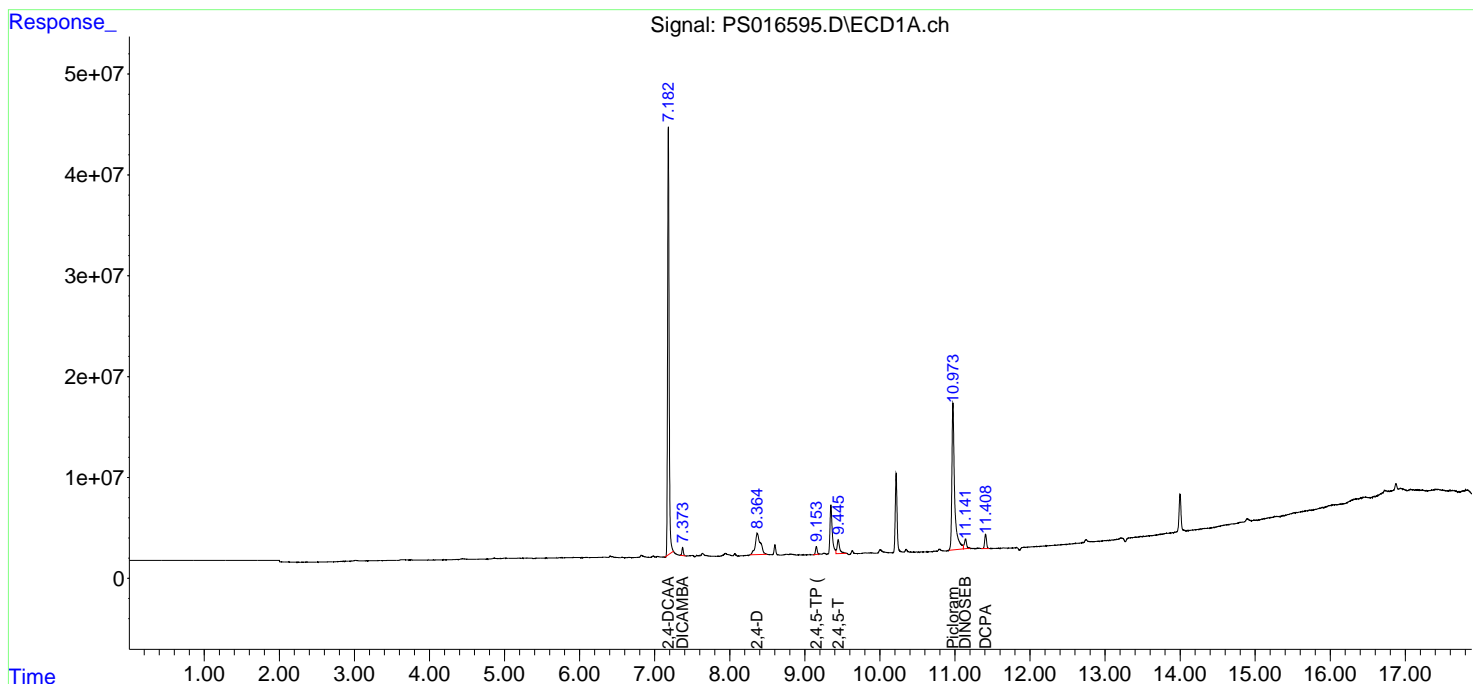
(f)=RT Delta > 1/2 Window (#)=Amounts differ by > 25% (m)=manual int.

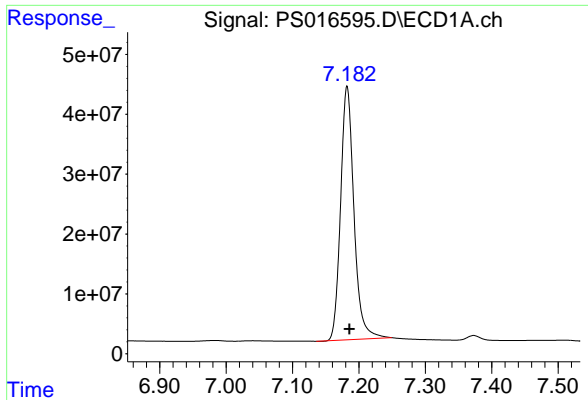
Data Path : Z:\pestpcbsrv\HPCHEM1\ECD_S\Data\PS082421\
 Data File : PS016595.D
 Signal(s) : Signal #1: ECD1A.ch Signal #2: ECD2B.ch
 Acq On : 24 Aug 2021 09:50
 Operator : DD\AJ
 Sample : I.BLK
 Misc :
 ALS Vial : 2 Sample Multiplier: 1

Instrument :
 ECD_S
 ClientSampled :
 I.BLK

Integration File signal 1: autoint1.e
 Integration File signal 2: autoint2.e
 Quant Time: Aug 25 06:58:18 2021
 Quant Method : Z:\pestpcbsrv\HPCHEM1\ECD_S\Method\PS080221.M
 Quant Title : 8080.M
 QLast Update : Mon Aug 02 14:10:19 2021
 Response via : Initial Calibration
 Integrator: ChemStation

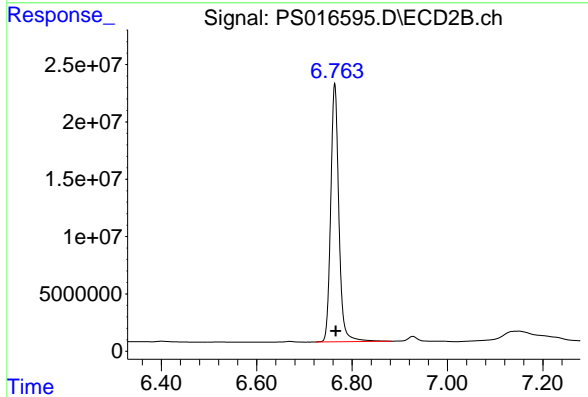
Volume Inj. : 2 µl
 Signal #1 Phase : Rtx-CLPesticides Signal #2 Phase: Rtx-CLPesticides2
 Signal #1 Info : 30M x 0.32mm x0.5 Signal #2 Info : 30M x 0.32mm x 0.25µm



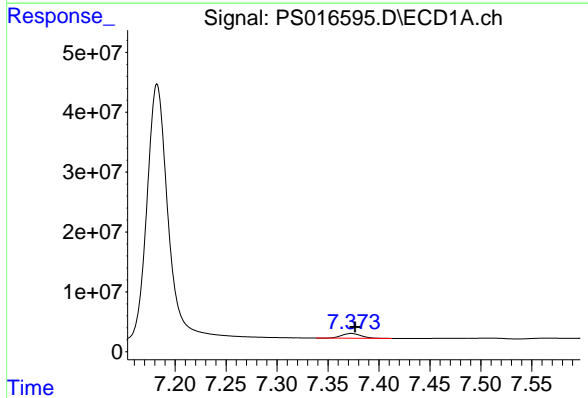


#4 2,4-DCAA
 R.T.: 7.182 min
 Delta R.T.: -0.003 min
 Response: 592141700
 Conc: 402.51 ng/ml

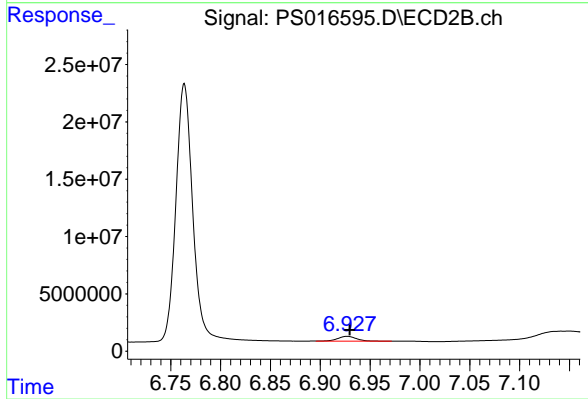
Instrument :
 ECD_S
 ClientSampleId :
 I.BLK



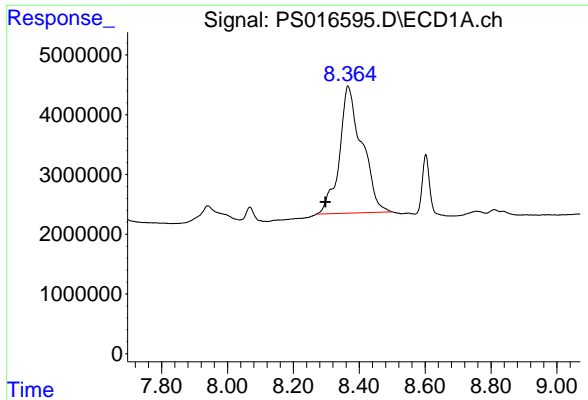
#4 2,4-DCAA
 R.T.: 6.764 min
 Delta R.T.: -0.002 min
 Response: 267310990
 Conc: 512.46 ng/ml



#5 DICAMBA
 R.T.: 7.373 min
 Delta R.T.: -0.004 min
 Response: 10680470
 Conc: 1.91 ng/ml

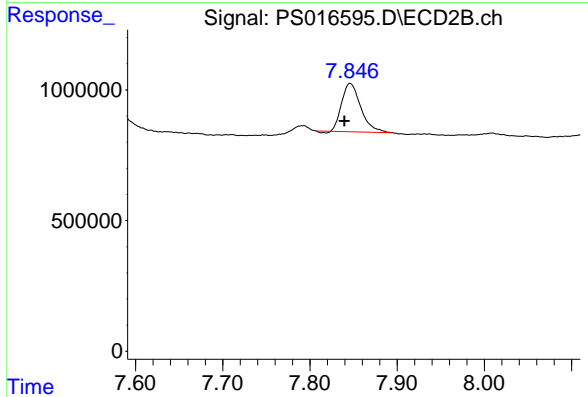


#5 DICAMBA
 R.T.: 6.927 min
 Delta R.T.: -0.002 min
 Response: 5477228
 Conc: 2.51 ng/ml

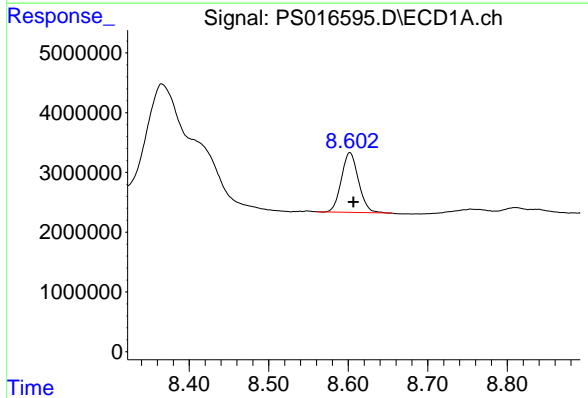


#9 2,4-D
R.T.: 8.365 min
Delta R.T.: 0.068 min
Response: 100862205
Conc: 66.70 ng/ml

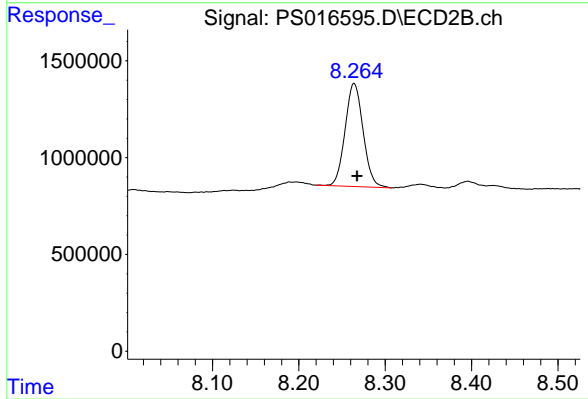
Instrument :
ECD_S
ClientSampled :
I.BLK



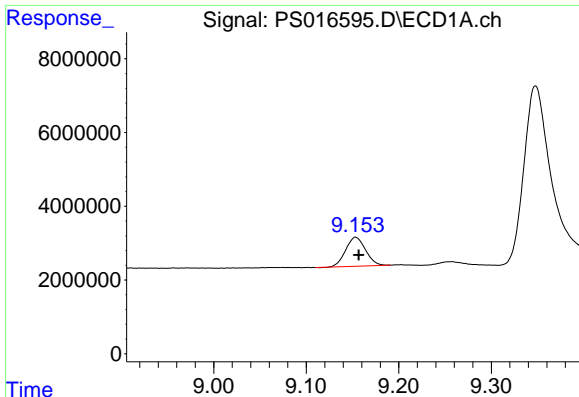
#9 2,4-D
R.T.: 7.846 min
Delta R.T.: 0.007 min
Response: 2825313
Conc: 4.46 ng/ml



#10 Pentachlorophenol
R.T.: 8.602 min
Delta R.T.: -0.004 min
Response: 14941526
Conc: N.D.



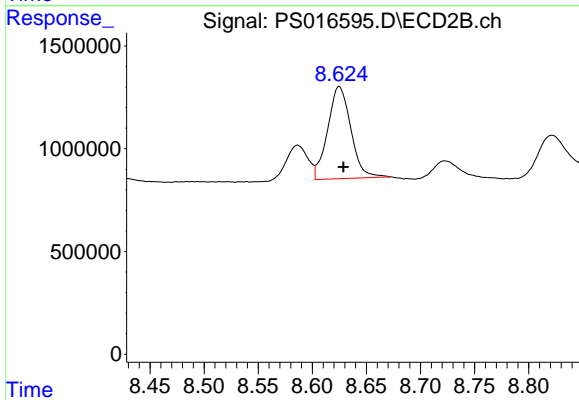
#10 Pentachlorophenol
R.T.: 8.264 min
Delta R.T.: -0.003 min
Response: 7723288
Conc: 1.04 ng/ml



#11 2,4,5-TP (SILVEX)

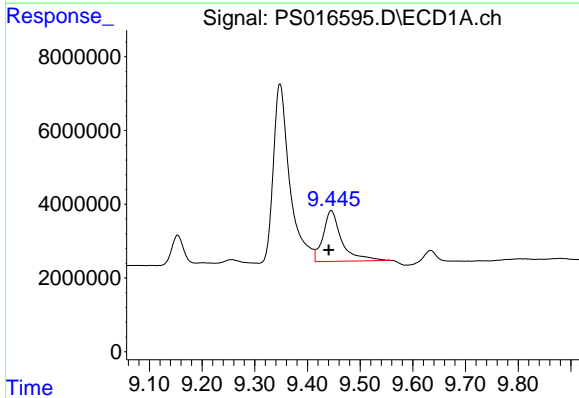
R.T.: 9.153 min
 Delta R.T.: -0.003 min
 Response: 11761223
 Conc: 1.63 ng/ml

Instrument :
 ECD_S
 ClientSampleId :
 I.BLK



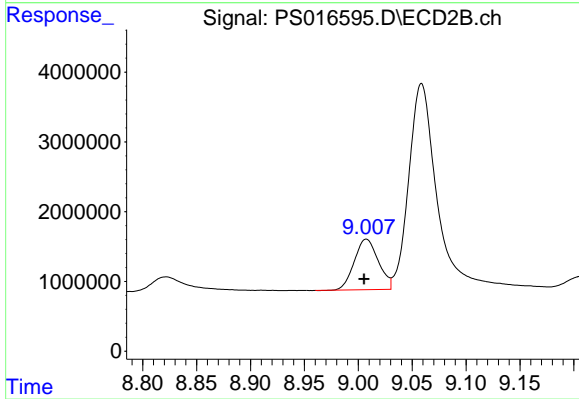
#11 2,4,5-TP (SILVEX)

R.T.: 8.625 min
 Delta R.T.: -0.004 min
 Response: 6686635
 Conc: 2.29 ng/ml



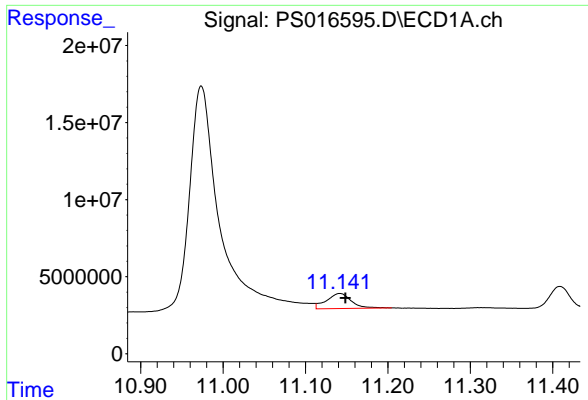
#12 2,4,5-T

R.T.: 9.445 min
 Delta R.T.: 0.005 min
 Response: 33742581
 Conc: 4.43 ng/ml



#12 2,4,5-T

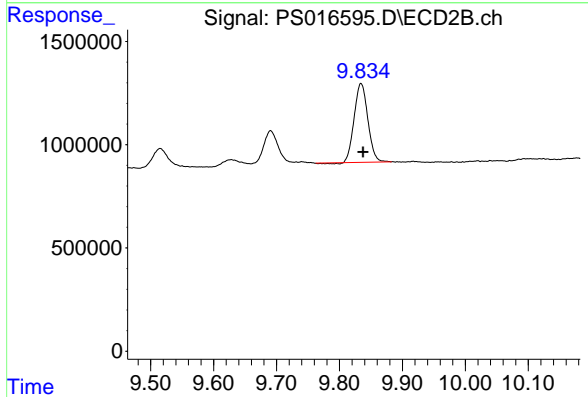
R.T.: 9.007 min
 Delta R.T.: 0.002 min
 Response: 11295500
 Conc: 3.90 ng/ml



#14 DINOSEB

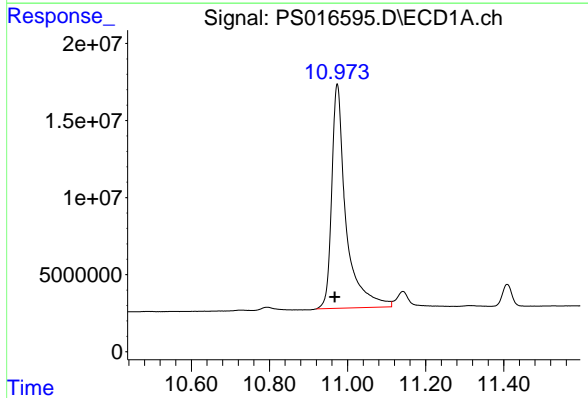
R.T.: 11.142 min
 Delta R.T.: -0.006 min
 Response: 20402840
 Conc: 3.87 ng/ml

Instrument :
 ECD_S
 ClientSampleId :
 I.BLK



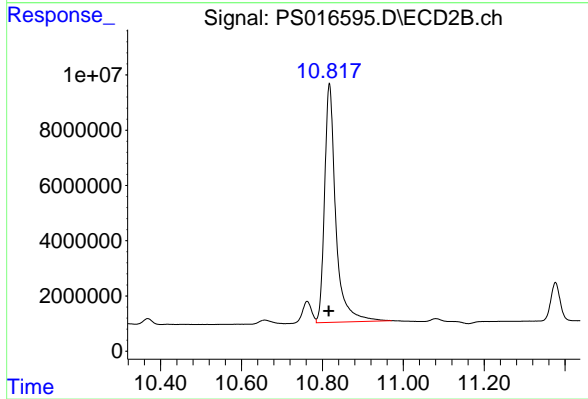
#14 DINOSEB

R.T.: 9.834 min
 Delta R.T.: -0.003 min
 Response: 5748740
 Conc: 2.82 ng/ml



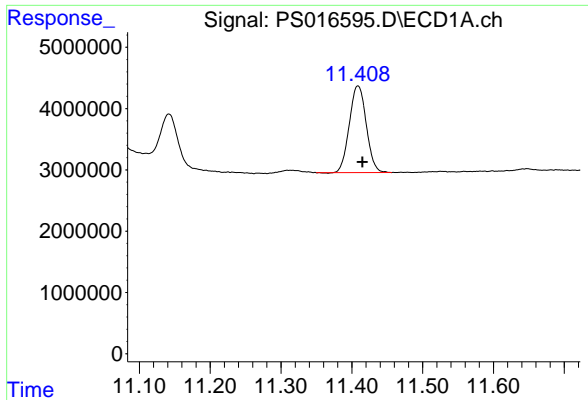
#15 Picloram

R.T.: 10.974 min
 Delta R.T.: 0.007 min
 Response: 369311536
 Conc: 37.00 ng/ml



#15 Picloram

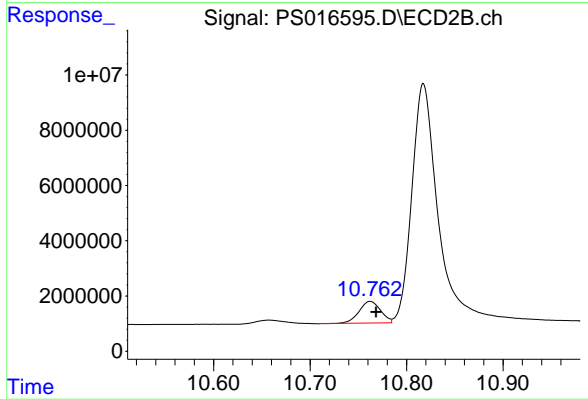
R.T.: 10.817 min
 Delta R.T.: 0.002 min
 Response: 166424012
 Conc: 41.33 ng/ml



#16 DCPA

R.T.: 11.409 min
Delta R.T.: -0.006 min
Response: 23538507
Conc: 2.23 ng/ml

Instrument :
ECD_S
ClientSampled :
I.BLK



#16 DCPA

R.T.: 10.762 min
Delta R.T.: -0.006 min
Response: 12169374
Conc: 2.71 ng/ml