

Data Path : Z:\pestpcbsrv\HPCHEM1\ECD_S\Data\PS082421\
 Data File : PS016640.D
 Signal(s) : Signal #1: ECD1A.ch Signal #2: ECD2B.ch
 Acq On : 25 Aug 2021 04:00
 Operator : DD\AJ
 Sample : M3467-09
 Misc :
 ALS Vial : 11 Sample Multiplier: 1

Instrument :
 ECD_S
 ClientSampleId :
 SAMPLE-7-(291.00)

Integration File signal 1: autoint1.e
 Integration File signal 2: autoint2.e
 Quant Time: Aug 25 08:02:36 2021
 Quant Method : Z:\pestpcbsrv\HPCHEM1\ECD_S\Method\PS080221.M
 Quant Title : 8080.M
 QLast Update : Mon Aug 02 14:10:19 2021
 Response via : Initial Calibration
 Integrator: ChemStation

Volume Inj. : 2 µl
 Signal #1 Phase : Rtx-CLPesticides Signal #2 Phase: Rtx-CLPesticides2
 Signal #1 Info : 30M x 0.32mm x0.5 Signal #2 Info : 30M x 0.32mm x 0.25µm

Compound	RT#1	RT#2	Resp#1	Resp#2	ng/ml	ng/ml

System Monitoring Compounds						
4) S 2,4-DCAA	7.181	6.763	554.9E6	141.4E6	377.178	271.047 #
Target Compounds						
1) T Dalapon	2.973f	2.482	46318789	133.1E6	22.958	191.046 #
2) T 3,5-DICHL...	0.000	5.980	0	23699244	N.D.	30.012
3) T 4-Nitroph...	0.000	6.414	0	7479569	N.D.	24.341
5) T DICAMBA	7.372	6.919	15189764	5465761	2.711	2.508
6) T MCPP	7.545	7.002	26270313	6258868	6.208	3.623 #
7) T MCPA	7.735	7.269	21971109	1346251	3.567	<MDL #
8) T DICHLORPROP	8.106	7.551	38395973	15734404	28.531	29.043
9) T 2,4-D	8.295	7.834	123.2E6	16196852	81.472	25.564 #
10) T Pentachlo...	8.600	8.267	42732242	115.7E6	2.177	15.616 #
11) T 2,4,5-TP ...	9.132	8.611	9377341	45798548	1.297	15.696 #
12) T 2,4,5-T	9.495f	8.989	134.6E6	8310654	17.662	2.869 #
13) T 2,4-DB	9.960	9.517	18067276	134.2E6	12.431	354.860 #
14) T DINOSEB	11.106f	9.824	596.8E6	12488569	113.176	6.130 #
15) T Picloram	10.932	10.801	199.5E6	360.2E6	19.989	89.445 #
16) T DCPA	11.440	10.801	62528836	360.2E6	5.916	80.123 #

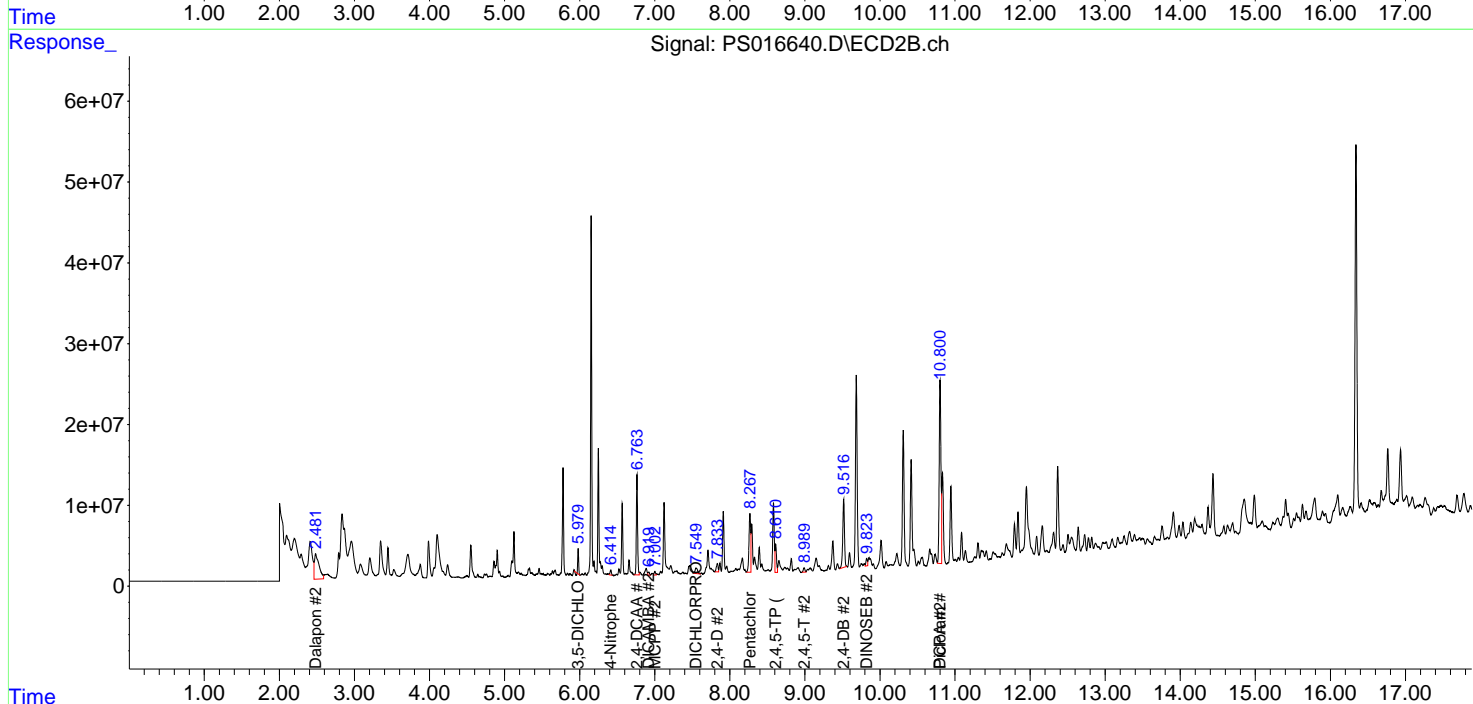
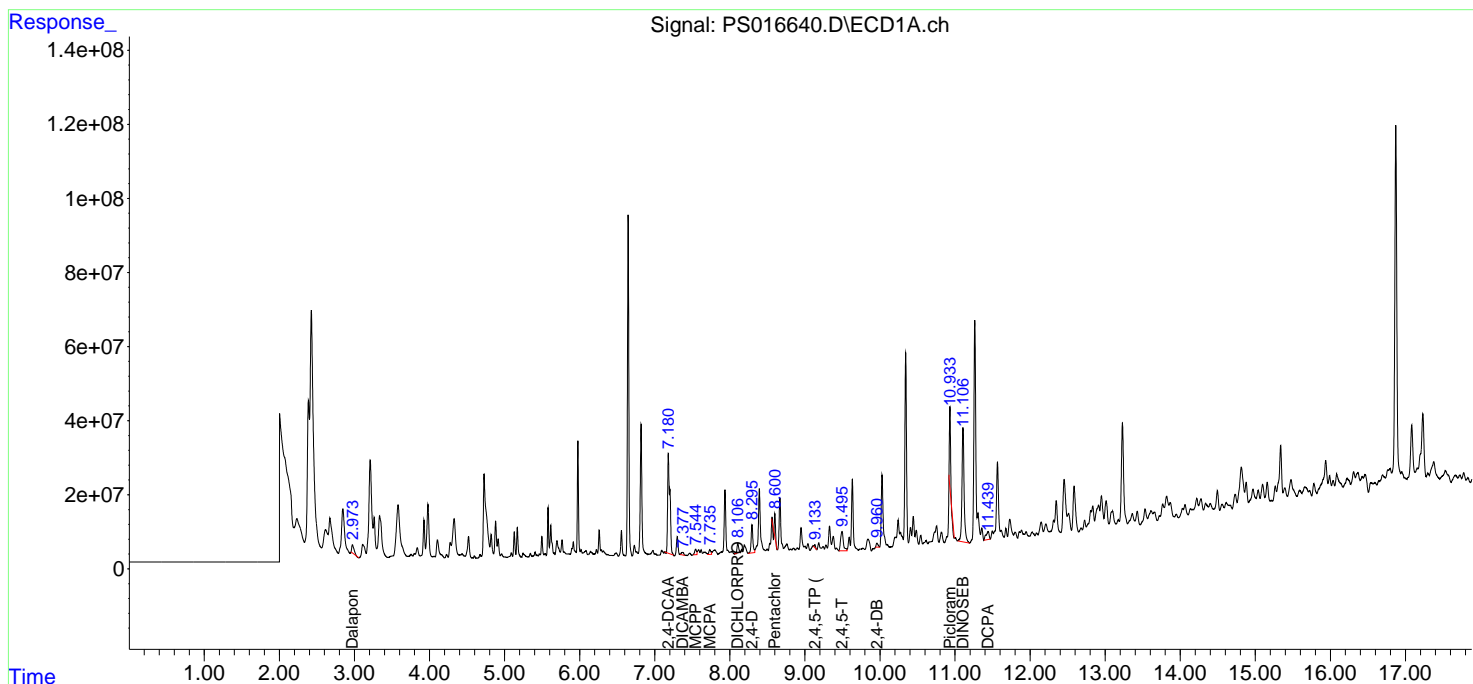
(f)=RT Delta > 1/2 Window (#)=Amounts differ by > 25% (m)=manual int.

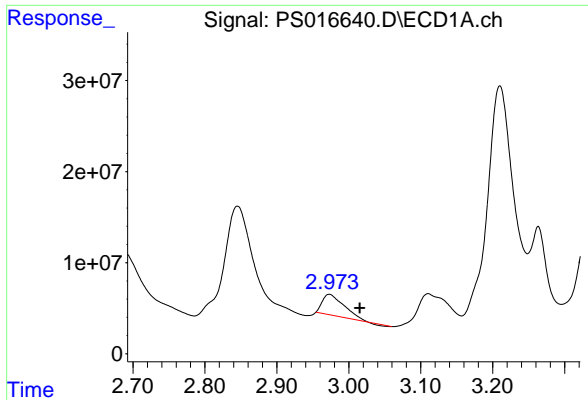
Data Path : Z:\pestpcbsrv\HPCHEM1\ECD_S\Data\PS082421\
 Data File : PS016640.D
 Signal(s) : Signal #1: ECD1A.ch Signal #2: ECD2B.ch
 Acq On : 25 Aug 2021 04:00
 Operator : DD\AJ
 Sample : M3467-09
 Misc :
 ALS Vial : 11 Sample Multiplier: 1

Instrument :
 ECD_S
 ClientSampleId :
 SAMPLE-7-(291.00)

Integration File signal 1: autoint1.e
 Integration File signal 2: autoint2.e
 Quant Time: Aug 25 08:02:36 2021
 Quant Method : Z:\pestpcbsrv\HPCHEM1\ECD_S\Method\PS080221.M
 Quant Title : 8080.M
 QLast Update : Mon Aug 02 14:10:19 2021
 Response via : Initial Calibration
 Integrator: ChemStation

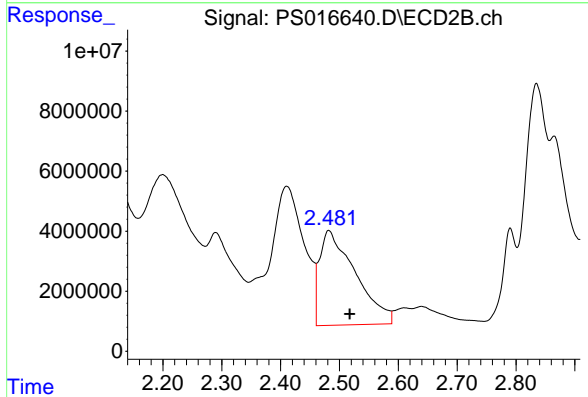
Volume Inj. : 2 µl
 Signal #1 Phase : Rtx-CLPesticides Signal #2 Phase: Rtx-CLPesticides2
 Signal #1 Info : 30M x 0.32mm x0.5 Signal #2 Info : 30M x 0.32mm x 0.25µm



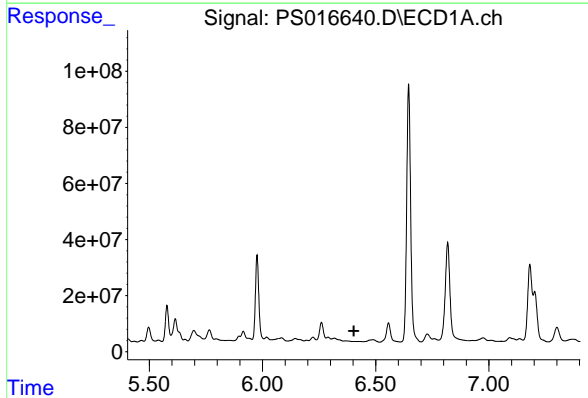


#1 Dalapon
 R.T.: 2.973 min
 Delta R.T.: -0.042 min
 Response: 46318789
 Conc: 22.96 ng/ml

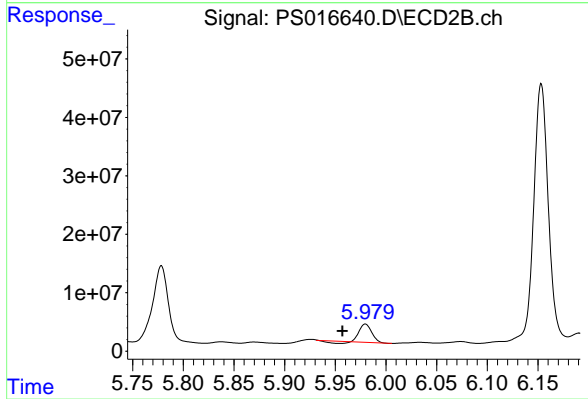
Instrument :
 ECD_S
ClientSampleId :
 SAMPLE-7-(291.00)



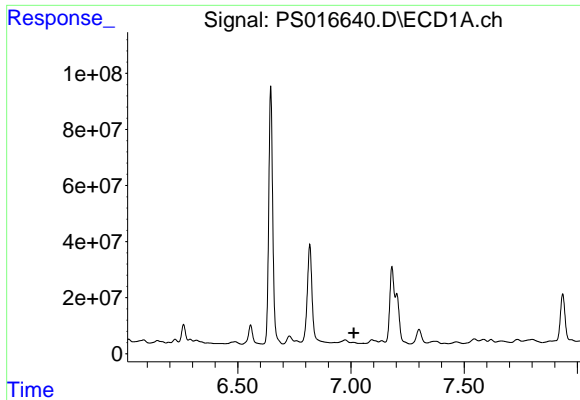
#1 Dalapon
 R.T.: 2.482 min
 Delta R.T.: -0.036 min
 Response: 133090623
 Conc: 191.05 ng/ml



#2 3,5-DICHLOROBENZOIC ACID
 R.T.: 0.000 min
 Exp R.T. : 6.404 min
 Response: 0
 Conc: N.D.

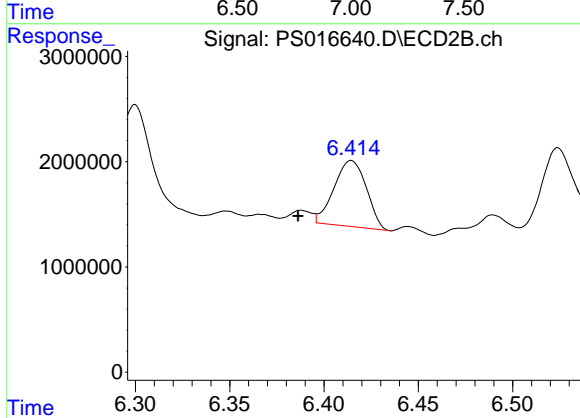


#2 3,5-DICHLOROBENZOIC ACID
 R.T.: 5.980 min
 Delta R.T.: 0.023 min
 Response: 23699244
 Conc: 30.01 ng/ml

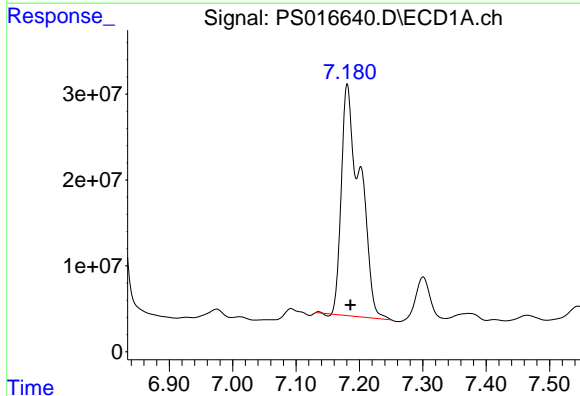


#3 4-Nitrophenol
 R.T.: 0.000 min
 Exp R.T.: 7.013 min
 Response: 0
 Conc: N.D.

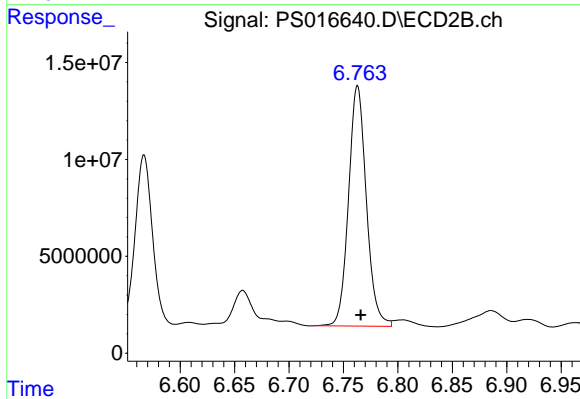
Instrument :
 ECD_S
 ClientSampleId :
 SAMPLE-7-(291.00)



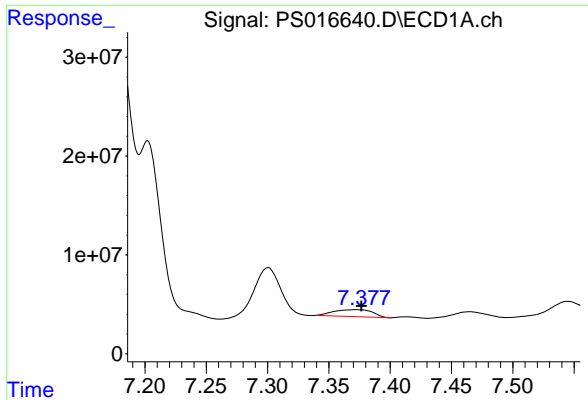
#3 4-Nitrophenol
 R.T.: 6.414 min
 Delta R.T.: 0.028 min
 Response: 7479569
 Conc: 24.34 ng/ml



#4 2,4-DCAA
 R.T.: 7.181 min
 Delta R.T.: -0.005 min
 Response: 554869019
 Conc: 377.18 ng/ml

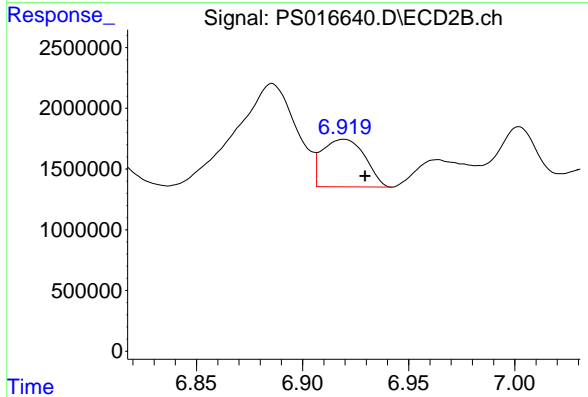


#4 2,4-DCAA
 R.T.: 6.763 min
 Delta R.T.: -0.003 min
 Response: 141384966
 Conc: 271.05 ng/ml

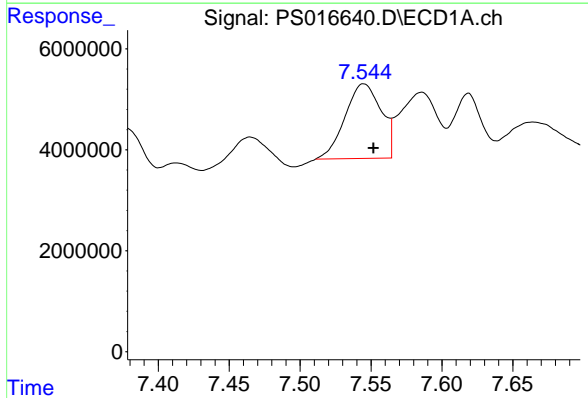


#5 DICAMBA
 R.T.: 7.372 min
 Delta R.T.: -0.004 min
 Response: 15189764
 Conc: 2.71 ng/ml

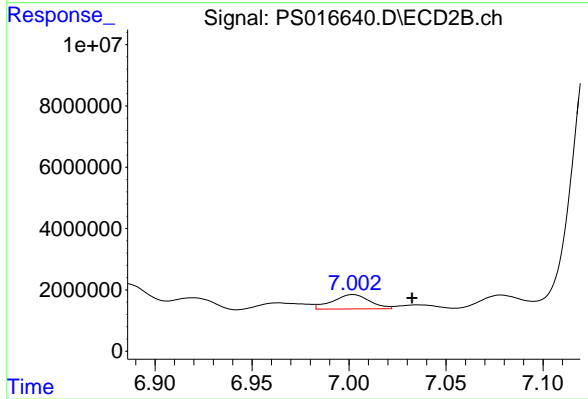
Instrument :
 ECD_S
 ClientSampleId :
 SAMPLE-7-(291.00)



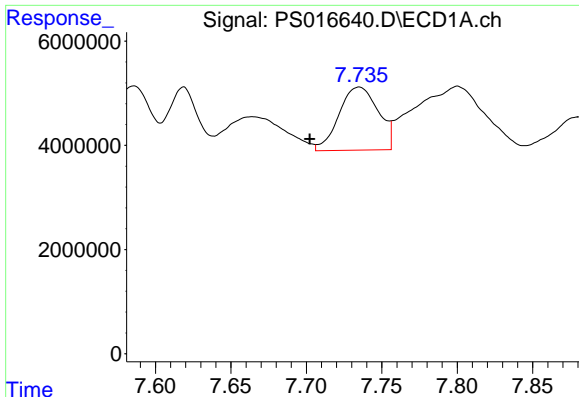
#5 DICAMBA
 R.T.: 6.919 min
 Delta R.T.: -0.010 min
 Response: 5465761
 Conc: 2.51 ng/ml



#6 MCP
 R.T.: 7.545 min
 Delta R.T.: -0.007 min
 Response: 26270313
 Conc: 6.21 ug/ml

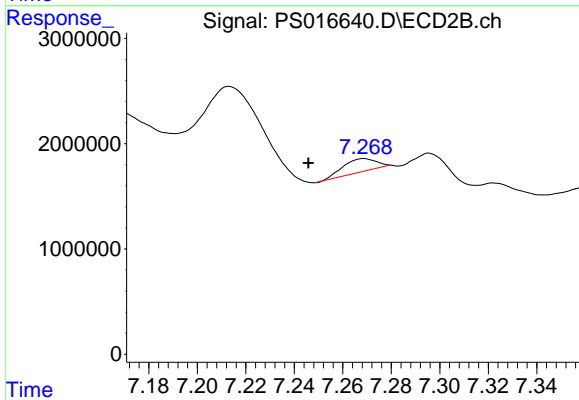


#6 MCP
 R.T.: 7.002 min
 Delta R.T.: -0.030 min
 Response: 6258868
 Conc: 3.62 ug/ml

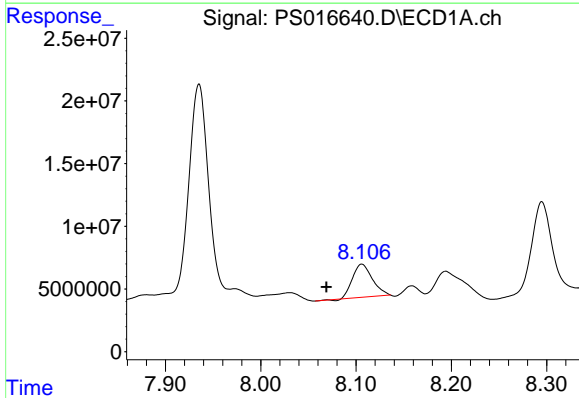


#7 MCPA
 R.T.: 7.735 min
 Delta R.T.: 0.033 min
 Response: 21971109
 Conc: 3.57 ug/ml

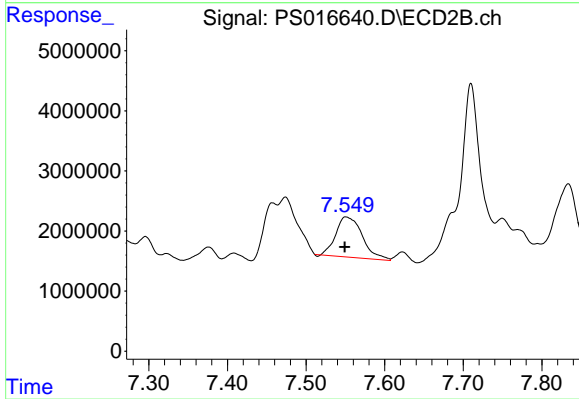
Instrument :
 ECD_S
ClientSampleId :
 SAMPLE-7-(291.00)



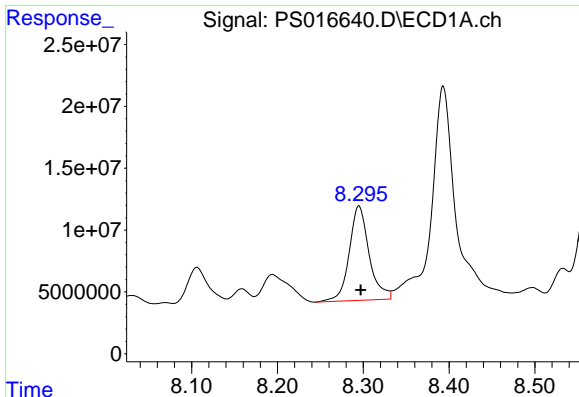
#7 MCPA
 R.T.: 7.269 min
 Delta R.T.: 0.023 min
 Response: 1346251
 Conc: N.D.



#8 DICHLORPROP
 R.T.: 8.106 min
 Delta R.T.: 0.037 min
 Response: 38395973
 Conc: 28.53 ng/ml



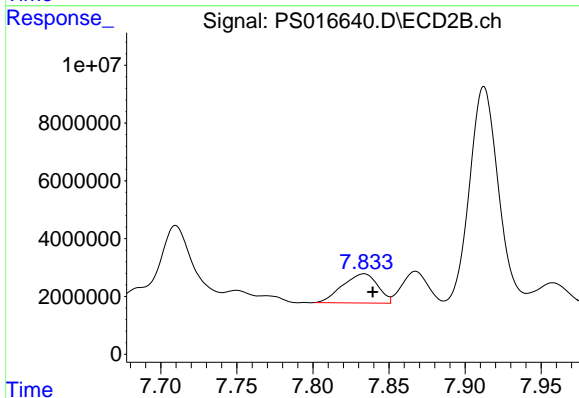
#8 DICHLORPROP
 R.T.: 7.551 min
 Delta R.T.: 0.001 min
 Response: 15734404
 Conc: 29.04 ng/ml



#9 2,4-D

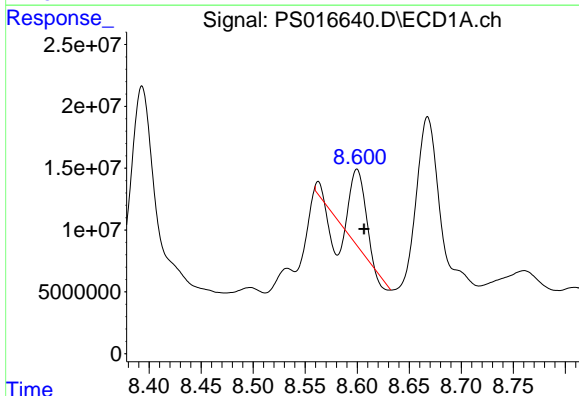
R.T.: 8.295 min
 Delta R.T.: -0.002 min
 Response: 123200884
 Conc: 81.47 ng/ml

Instrument :
 ECD_S
 ClientSampleId :
 SAMPLE-7-(291.00)



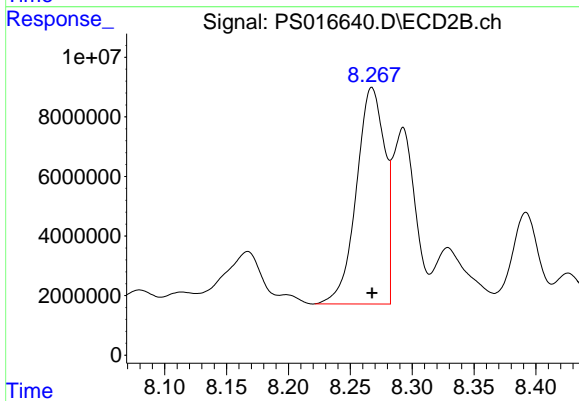
#9 2,4-D

R.T.: 7.834 min
 Delta R.T.: -0.006 min
 Response: 16196852
 Conc: 25.56 ng/ml



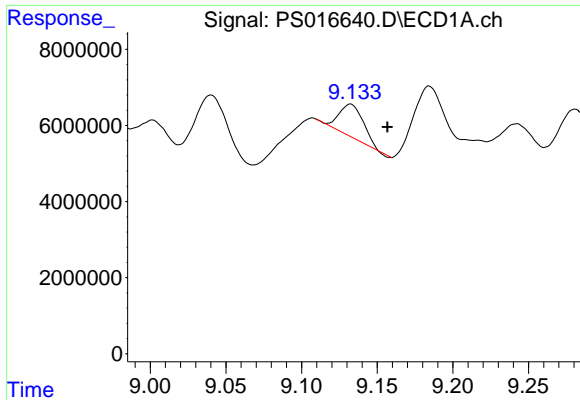
#10 Pentachlorophenol

R.T.: 8.600 min
 Delta R.T.: -0.007 min
 Response: 42732242
 Conc: 2.18 ng/ml



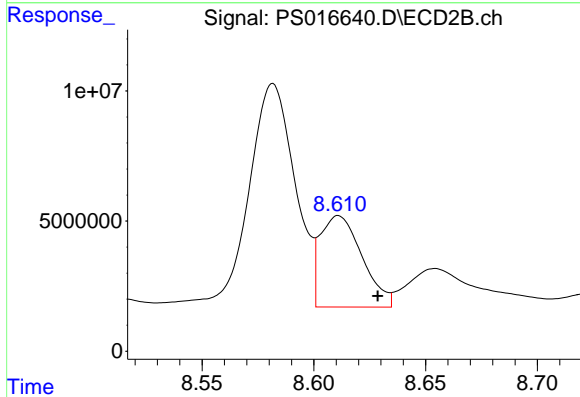
#10 Pentachlorophenol

R.T.: 8.267 min
 Delta R.T.: 0.000 min
 Response: 115683385
 Conc: 15.62 ng/ml

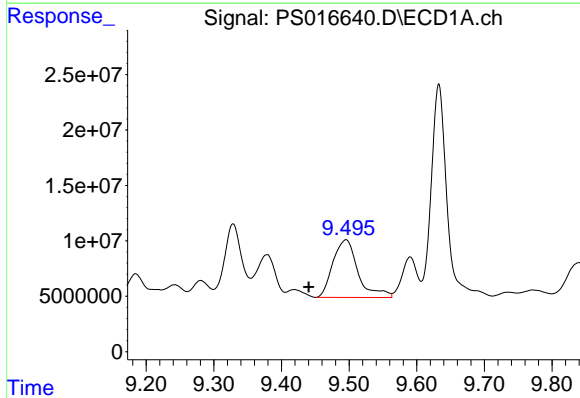


#11 2,4,5-TP (SILVEX)
 R.T.: 9.132 min
 Delta R.T.: -0.025 min
 Response: 9377341
 Conc: 1.30 ng/ml

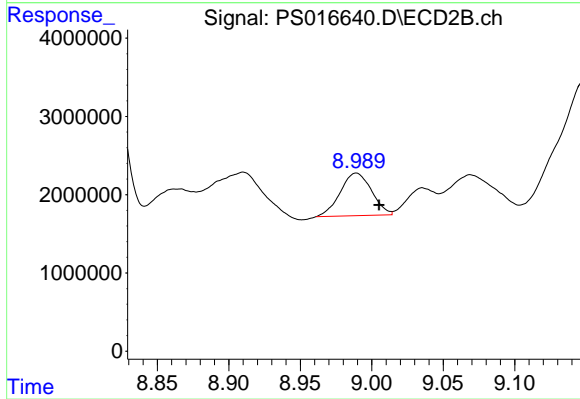
Instrument :
 ECD_S
 ClientSampleId :
 SAMPLE-7-(291.00)



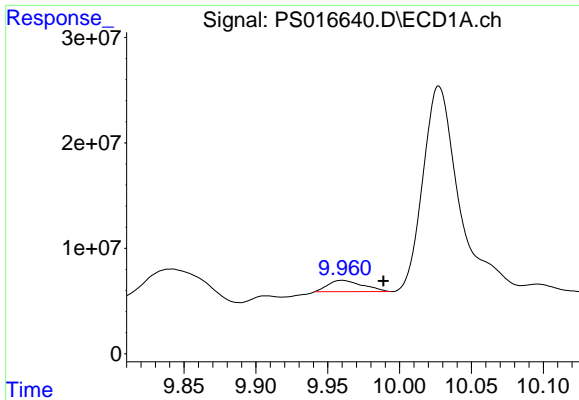
#11 2,4,5-TP (SILVEX)
 R.T.: 8.611 min
 Delta R.T.: -0.018 min
 Response: 45798548
 Conc: 15.70 ng/ml



#12 2,4,5-T
 R.T.: 9.495 min
 Delta R.T.: 0.055 min
 Response: 134635956
 Conc: 17.66 ng/ml

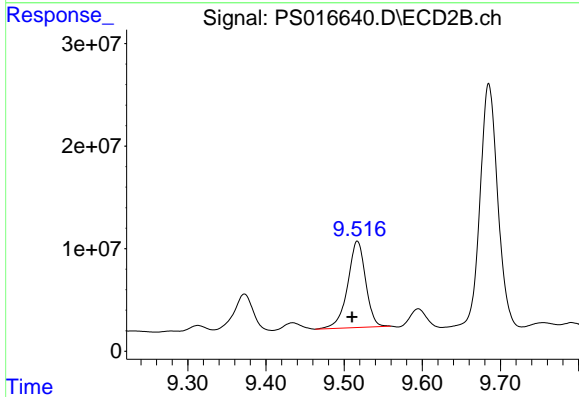


#12 2,4,5-T
 R.T.: 8.989 min
 Delta R.T.: -0.016 min
 Response: 8310654
 Conc: 2.87 ng/ml

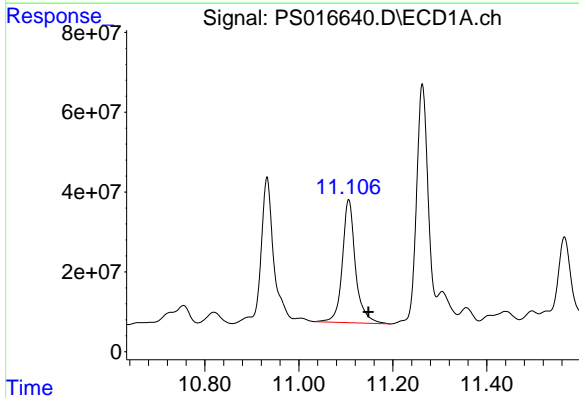


#13 2,4-DB
 R.T.: 9.960 min
 Delta R.T.: -0.029 min
 Response: 18067276
 Conc: 12.43 ng/ml

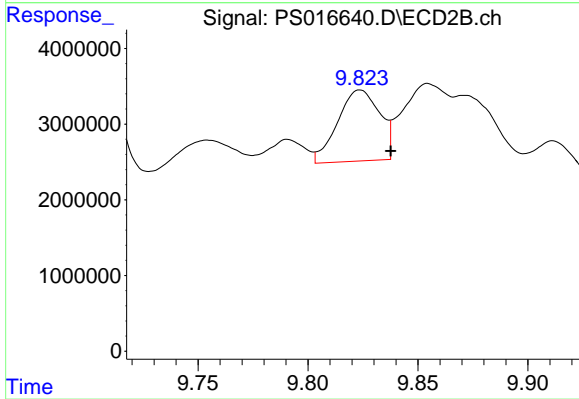
Instrument :
 ECD_S
ClientSampleId :
 SAMPLE-7-(291.00)



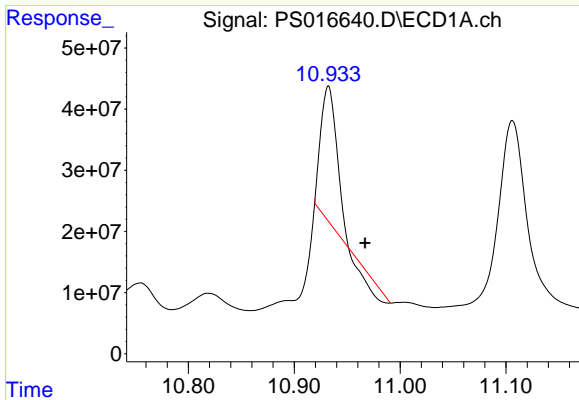
#13 2,4-DB
 R.T.: 9.517 min
 Delta R.T.: 0.007 min
 Response: 134244164
 Conc: 354.86 ng/ml



#14 DINOSEB
 R.T.: 11.106 min
 Delta R.T.: -0.042 min
 Response: 596807816
 Conc: 113.18 ng/ml

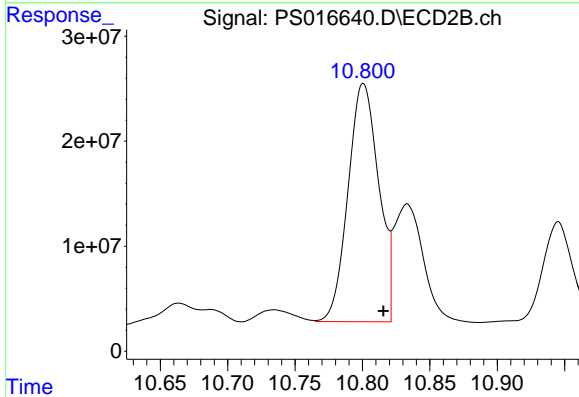


#14 DINOSEB
 R.T.: 9.824 min
 Delta R.T.: -0.014 min
 Response: 12488569
 Conc: 6.13 ng/ml

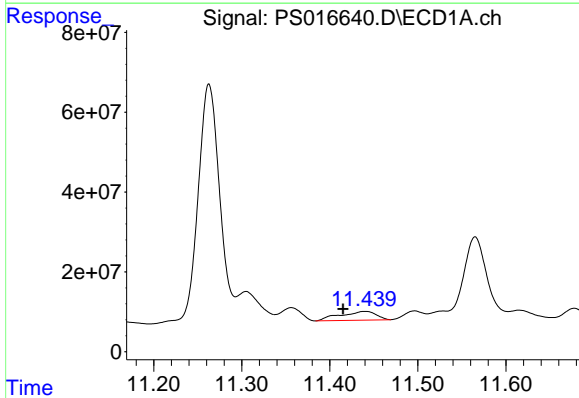


#15 Picloram
 R.T.: 10.932 min
 Delta R.T.: -0.035 min
 Response: 199508799
 Conc: 19.99 ng/ml

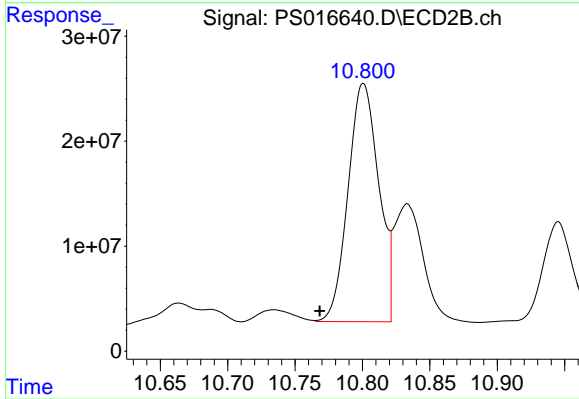
Instrument :
 ECD_S
ClientSampleId :
 SAMPLE-7-(291.00)



#15 Picloram
 R.T.: 10.801 min
 Delta R.T.: -0.015 min
 Response: 360161936
 Conc: 89.44 ng/ml



#16 DCPA
 R.T.: 11.440 min
 Delta R.T.: 0.025 min
 Response: 62528836
 Conc: 5.92 ng/ml



#16 DCPA
 R.T.: 10.801 min
 Delta R.T.: 0.032 min
 Response: 360161936
 Conc: 80.12 ng/ml