

Data Path : Z:\pestpcbsrv\HPCHEM1\ECD_S\Data\PS082421\
 Data File : PS016641.D
 Signal(s) : Signal #1: ECD1A.ch Signal #2: ECD2B.ch
 Acq On : 25 Aug 2021 04:24
 Operator : DD\AJ
 Sample : M3467-11
 Misc :
 ALS Vial : 12 Sample Multiplier: 1

Instrument :
 ECD_S
 ClientSampleId :
 SAMPLE-1-(150.00)

Integration File signal 1: autoint1.e
 Integration File signal 2: autoint2.e
 Quant Time: Aug 25 08:02:58 2021
 Quant Method : Z:\pestpcbsrv\HPCHEM1\ECD_S\Method\PS080221.M
 Quant Title : 8080.M
 QLast Update : Mon Aug 02 14:10:19 2021
 Response via : Initial Calibration
 Integrator: ChemStation

Volume Inj. : 2 µl
 Signal #1 Phase : Rtx-CLPesticides Signal #2 Phase: Rtx-CLPesticides2
 Signal #1 Info : 30M x 0.32mm x0.5 Signal #2 Info : 30M x 0.32mm x 0.25µm

	Compound	RT#1	RT#2	Resp#1	Resp#2	ng/ml	ng/ml

System Monitoring Compounds							
4) S	2,4-DCAA	7.180	6.763	531.7E6	231.6E6	361.460	443.975
Target Compounds							
1) T	Dalapon	2.971f	2.481	52749526	190.3E6	26.146	273.098 #
2) T	3,5-DICHL...	0.000	5.980	0	27186638	N.D.	34.429
3) T	4-Nitroph...	0.000	6.418	0	5401913	N.D.	17.579
5) T	DICAMBA	7.377	6.919	13144155	4952431	2.346	2.273
6) T	MCP P	7.542	7.002	19571727	8244468	4.625	4.772
7) T	MCPA	7.733	7.214	16762440	17852709	2.721	6.549 #
8) T	DICHLORPROP	8.032	7.564	33274860	11778527	24.726	21.741
9) T	2,4-D	8.295	7.831	123.3E6	20548640	81.567	32.433 #
10) T	Pentachlo...	8.600	8.263	511.5E6	255.5E6	26.058	34.484 #
11) T	2,4,5-TP ...	9.131	8.611	8893290	39123482	1.230	13.408 #
12) T	2,4,5-T	9.383f	8.990	85924633	10470880	11.272	3.615 #
13) T	2,4-DB	9.960	9.518	15315601	100.7E6	10.538	266.193 #
14) T	DINOSEB	11.106f	9.825	1084.2E6	15485592	205.611	7.601 #
15) T	Picloram	0.000	10.800	0	338.2E6	N.D.	83.997
16) T	DCPA	11.436	10.750	33728437	3765373	3.191	<MDL #

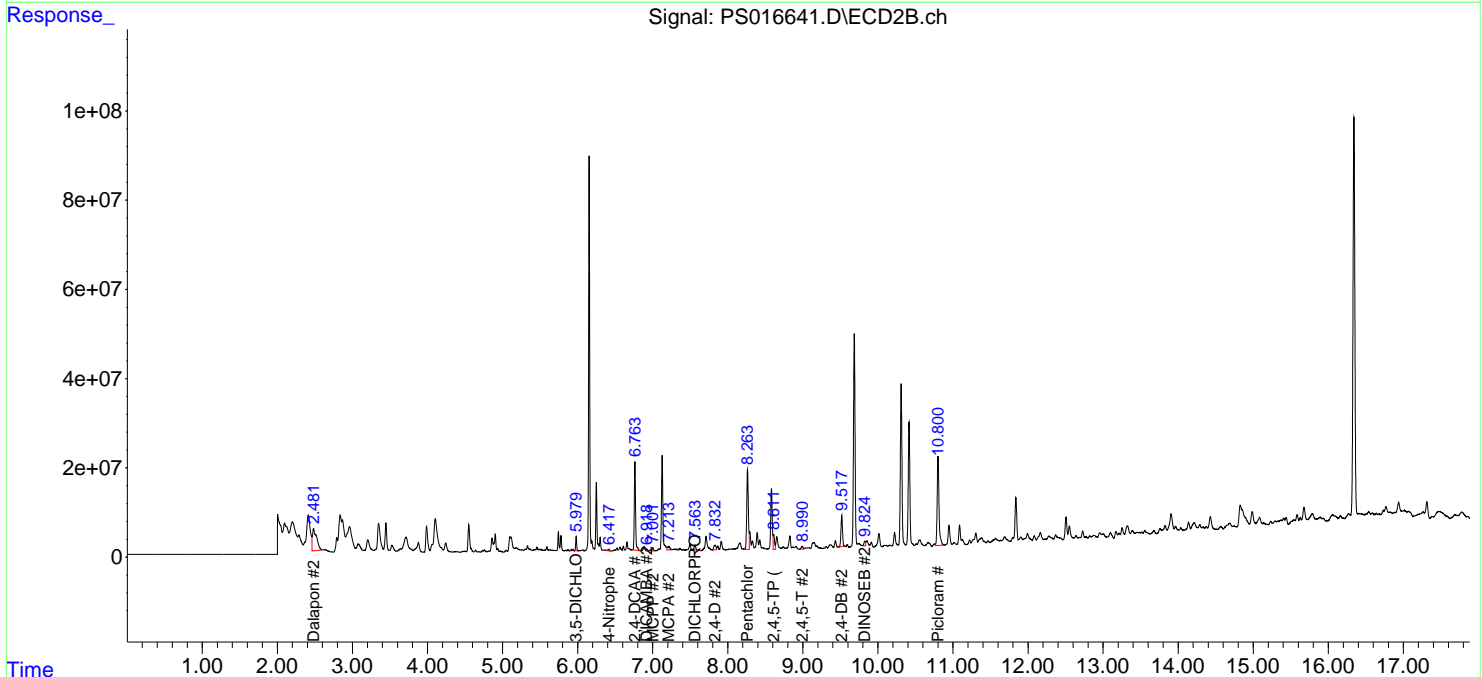
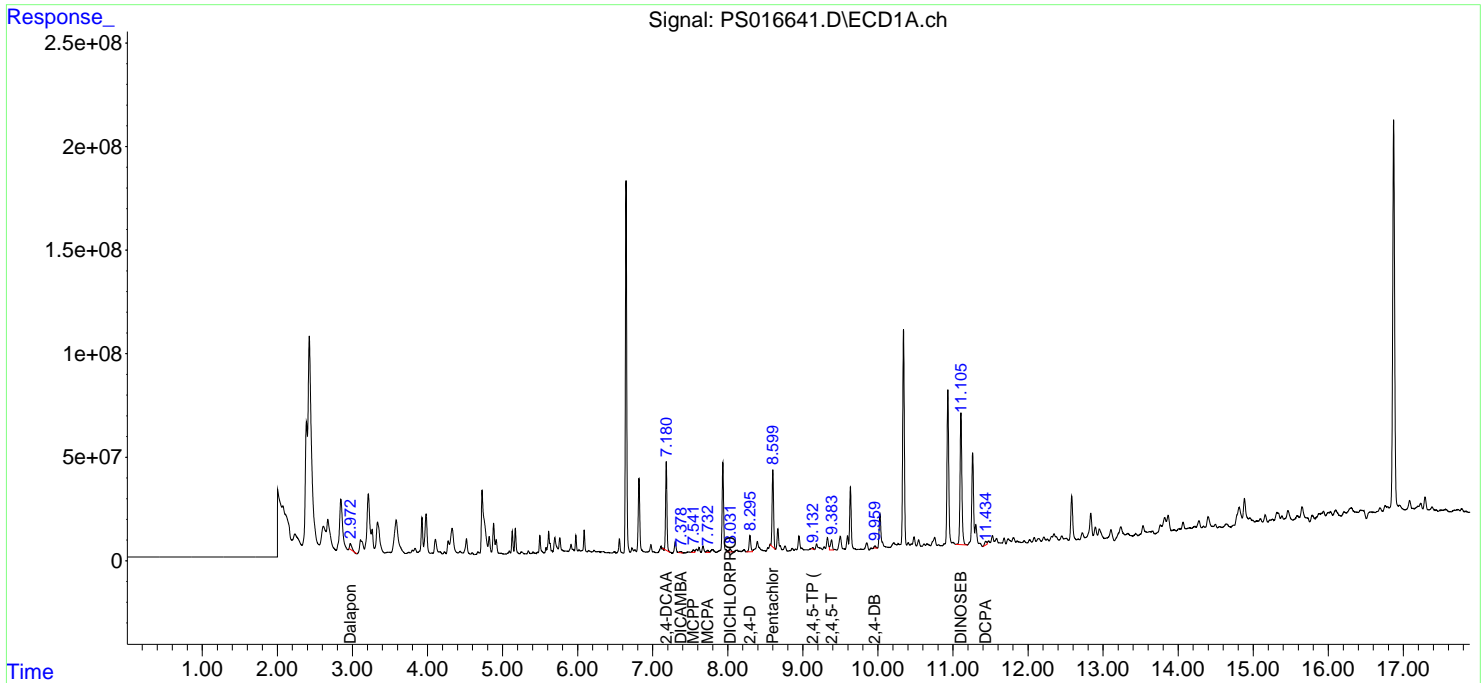
(f)=RT Delta > 1/2 Window (#)=Amounts differ by > 25% (m)=manual int.

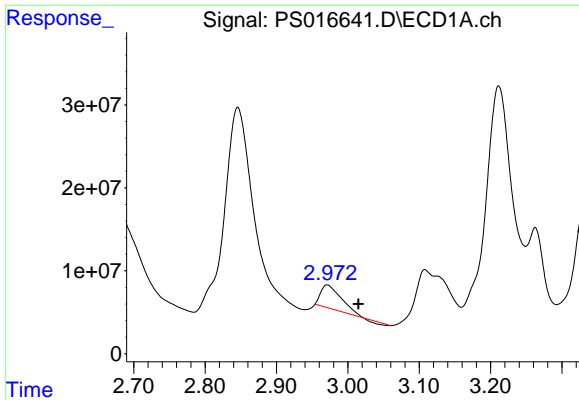
Data Path : Z:\pestpcbsrv\HPCHEM1\ECD_S\Data\PS082421\
 Data File : PS016641.D
 Signal(s) : Signal #1: ECD1A.ch Signal #2: ECD2B.ch
 Acq On : 25 Aug 2021 04:24
 Operator : DD\AJ
 Sample : M3467-11
 Misc :
 ALS Vial : 12 Sample Multiplier: 1

Instrument :
 ECD_S
 ClientSampled :
 SAMPLE-1-(150.00)

Integration File signal 1: autoint1.e
 Integration File signal 2: autoint2.e
 Quant Time: Aug 25 08:02:58 2021
 Quant Method : Z:\pestpcbsrv\HPCHEM1\ECD_S\Method\PS080221.M
 Quant Title : 8080.M
 QLast Update : Mon Aug 02 14:10:19 2021
 Response via : Initial Calibration
 Integrator: ChemStation

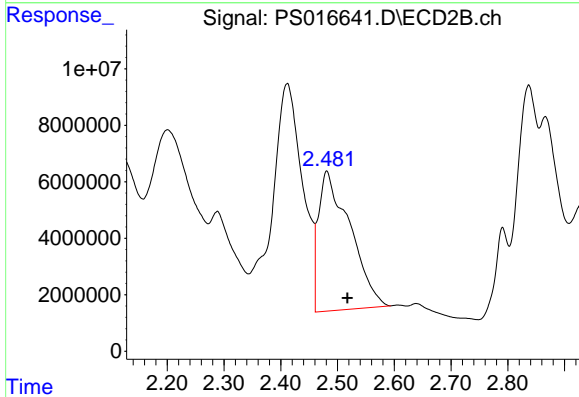
Volume Inj. : 2 µl
 Signal #1 Phase : Rtx-CLPesticides Signal #2 Phase: Rtx-CLPesticides2
 Signal #1 Info : 30M x 0.32mm x0.5 Signal #2 Info : 30M x 0.32mm x 0.25µm



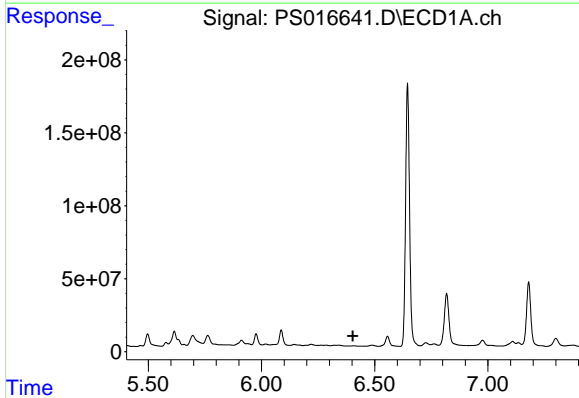


#1 Dalapon
 R.T.: 2.971 min
 Delta R.T.: -0.044 min
 Response: 52749526
 Conc: 26.15 ng/ml

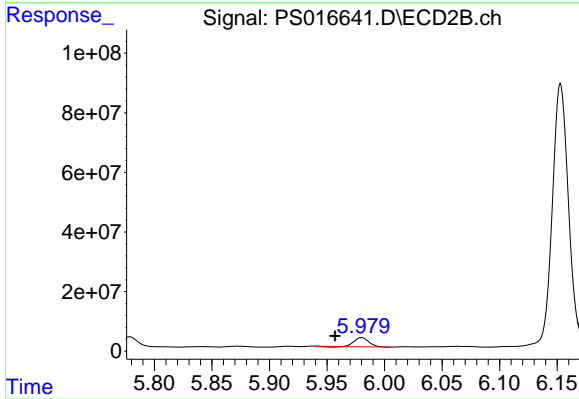
Instrument :
 ECD_S
 ClientSampleId :
 SAMPLE-1-(150.00)



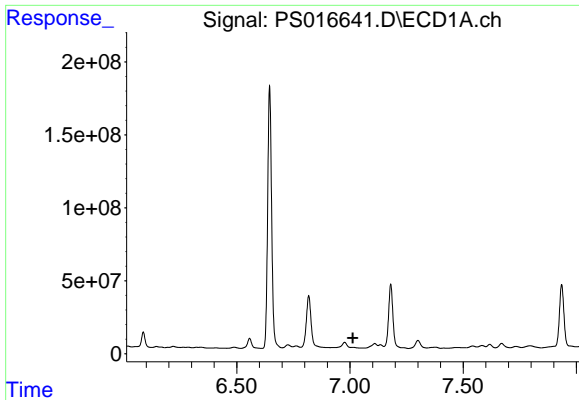
#1 Dalapon
 R.T.: 2.481 min
 Delta R.T.: -0.036 min
 Response: 190251282
 Conc: 273.10 ng/ml



#2 3,5-DICHLOROBENZOIC ACID
 R.T.: 0.000 min
 Exp R.T. : 6.404 min
 Response: 0
 Conc: N.D.



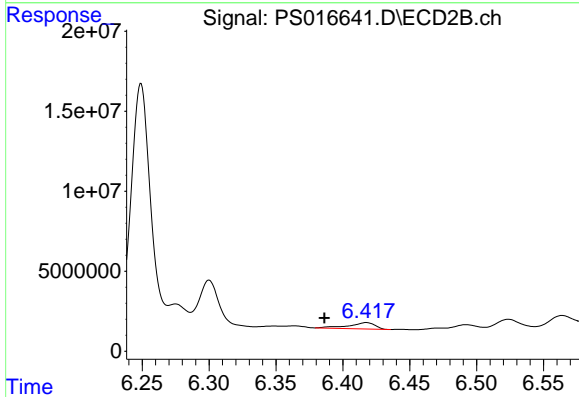
#2 3,5-DICHLOROBENZOIC ACID
 R.T.: 5.980 min
 Delta R.T.: 0.023 min
 Response: 27186638
 Conc: 34.43 ng/ml



#3 4-Nitrophenol

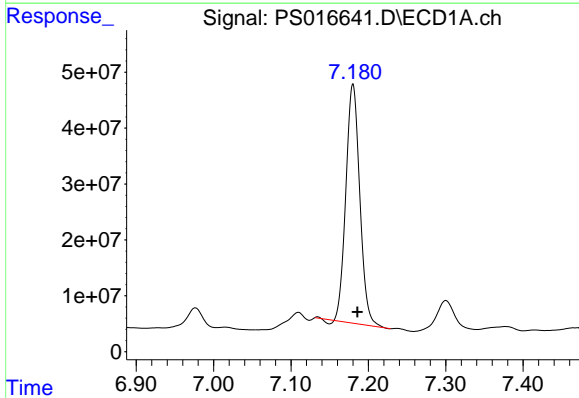
R.T.: 0.000 min
 Exp R.T.: 7.013 min
 Response: 0
 Conc: N.D.

Instrument :
 ECD_S
 ClientSampleId :
 SAMPLE-1-(150.00)



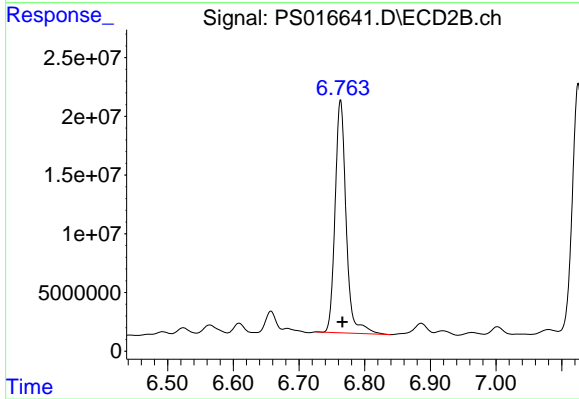
#3 4-Nitrophenol

R.T.: 6.418 min
 Delta R.T.: 0.031 min
 Response: 5401913
 Conc: 17.58 ng/ml



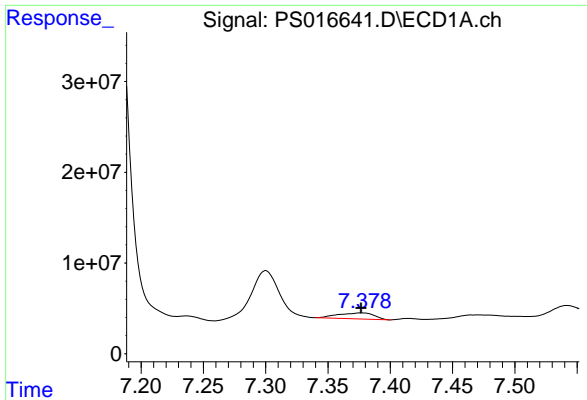
#4 2,4-DCAA

R.T.: 7.180 min
 Delta R.T.: -0.006 min
 Response: 531745966
 Conc: 361.46 ng/ml



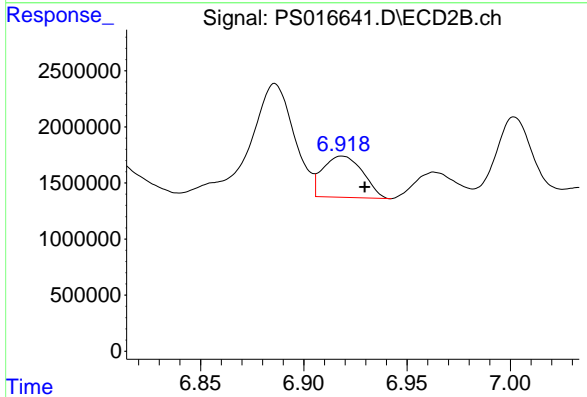
#4 2,4-DCAA

R.T.: 6.763 min
 Delta R.T.: -0.003 min
 Response: 231588290
 Conc: 443.98 ng/ml

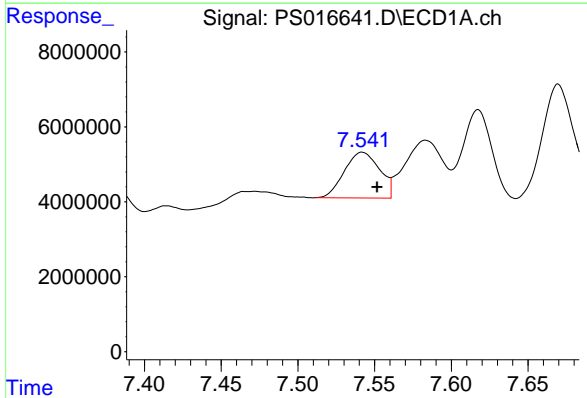


#5 DICAMBA
 R.T.: 7.377 min
 Delta R.T.: 0.000 min
 Response: 13144155
 Conc: 2.35 ng/ml

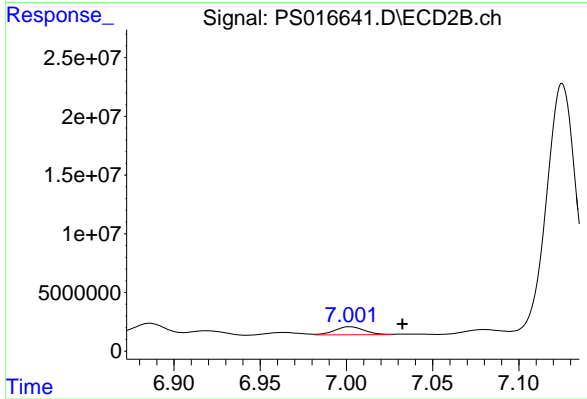
Instrument :
 ECD_S
 ClientSampleId :
 SAMPLE-1-(150.00)



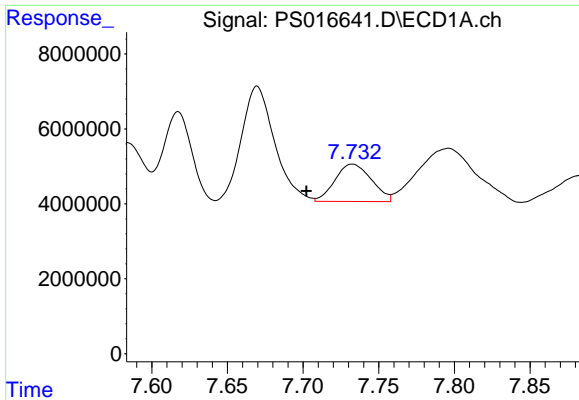
#5 DICAMBA
 R.T.: 6.919 min
 Delta R.T.: -0.011 min
 Response: 4952431
 Conc: 2.27 ng/ml



#6 MCPP
 R.T.: 7.542 min
 Delta R.T.: -0.010 min
 Response: 19571727
 Conc: 4.62 ug/ml

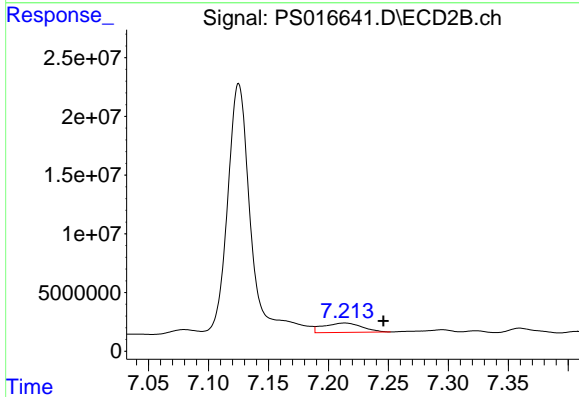


#6 MCPP
 R.T.: 7.002 min
 Delta R.T.: -0.031 min
 Response: 8244468
 Conc: 4.77 ug/ml

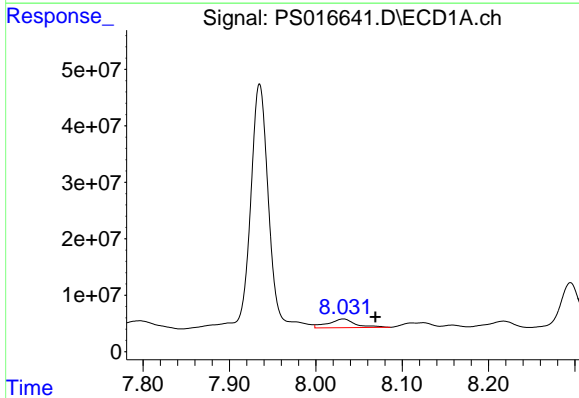


#7 MCPA
 R.T.: 7.733 min
 Delta R.T.: 0.030 min
 Response: 16762440
 Conc: 2.72 ug/ml

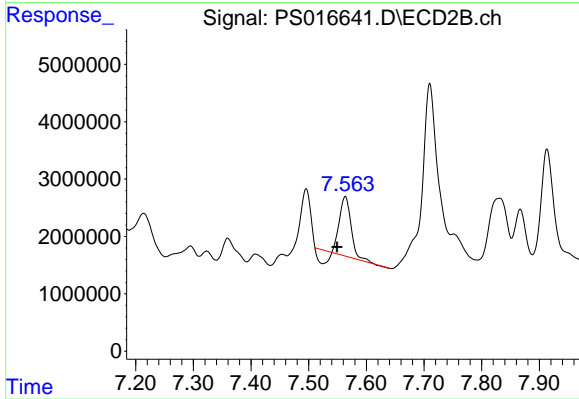
Instrument :
 ECD_S
ClientSampleId :
 SAMPLE-1-(150.00)



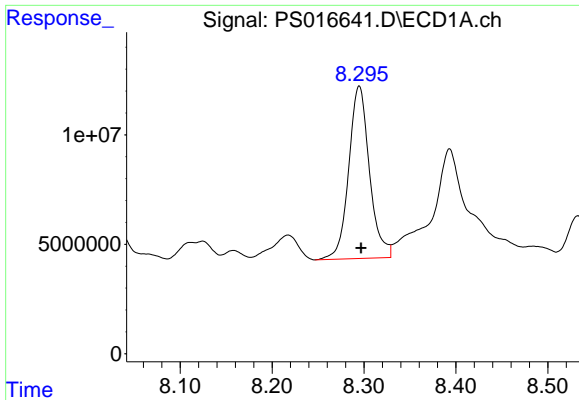
#7 MCPA
 R.T.: 7.214 min
 Delta R.T.: -0.032 min
 Response: 17852709
 Conc: 6.55 ug/ml



#8 DICHLORPROP
 R.T.: 8.032 min
 Delta R.T.: -0.037 min
 Response: 33274860
 Conc: 24.73 ng/ml

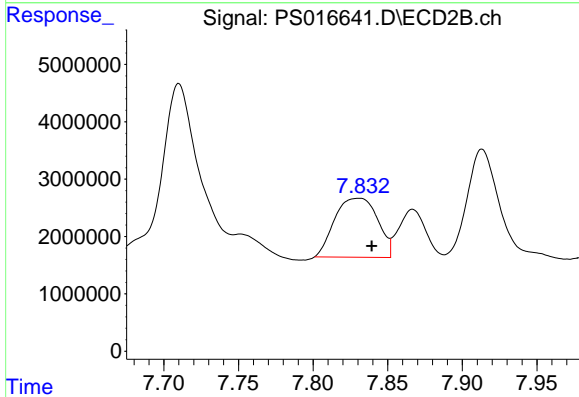


#8 DICHLORPROP
 R.T.: 7.564 min
 Delta R.T.: 0.014 min
 Response: 11778527
 Conc: 21.74 ng/ml

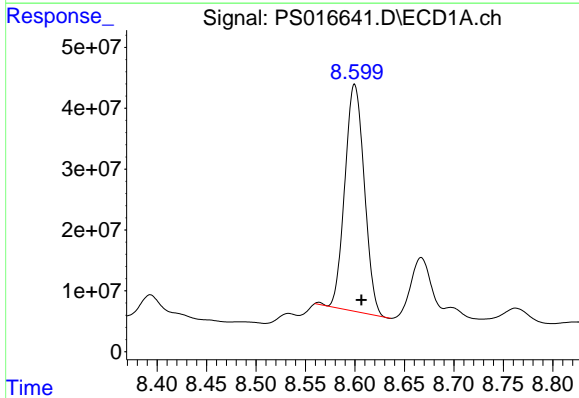


#9 2,4-D
R.T.: 8.295 min
Delta R.T.: -0.002 min
Response: 123344833
Conc: 81.57 ng/ml

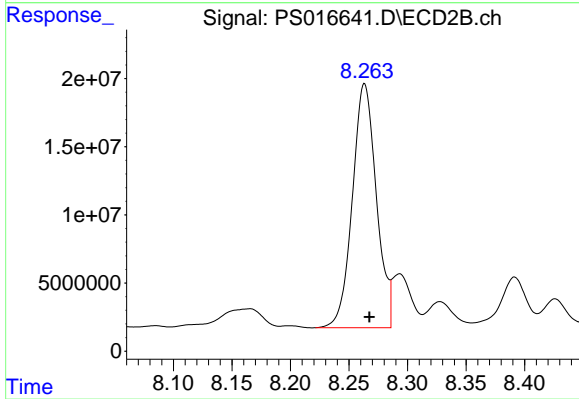
Instrument :
ECD_S
ClientSampleId :
SAMPLE-1-(150.00)



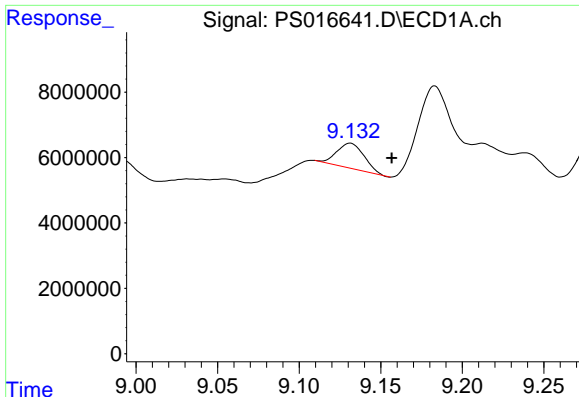
#9 2,4-D
R.T.: 7.831 min
Delta R.T.: -0.008 min
Response: 20548640
Conc: 32.43 ng/ml



#10 Pentachlorophenol
R.T.: 8.600 min
Delta R.T.: -0.007 min
Response: 511500833
Conc: 26.06 ng/ml



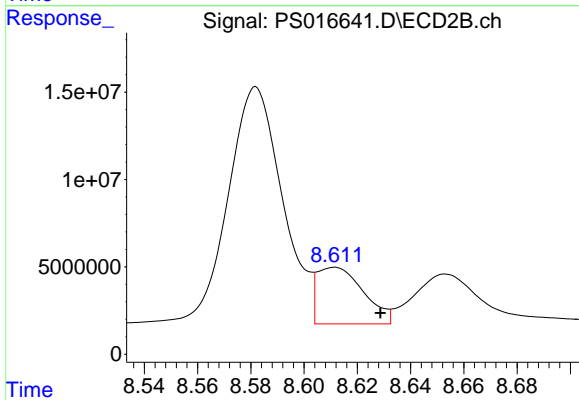
#10 Pentachlorophenol
R.T.: 8.263 min
Delta R.T.: -0.004 min
Response: 255465248
Conc: 34.48 ng/ml



#11 2,4,5-TP (SILVEX)

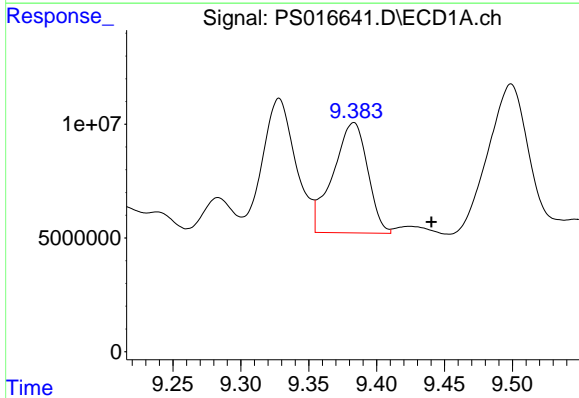
R.T.: 9.131 min
 Delta R.T.: -0.026 min
 Response: 8893290
 Conc: 1.23 ng/ml

Instrument :
 ECD_S
 ClientSampleId :
 SAMPLE-1-(150.00)



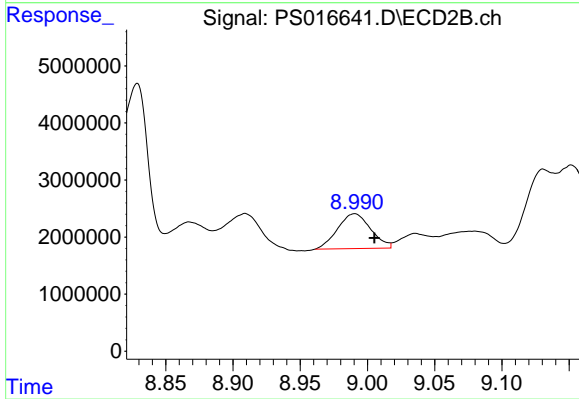
#11 2,4,5-TP (SILVEX)

R.T.: 8.611 min
 Delta R.T.: -0.017 min
 Response: 39123482
 Conc: 13.41 ng/ml



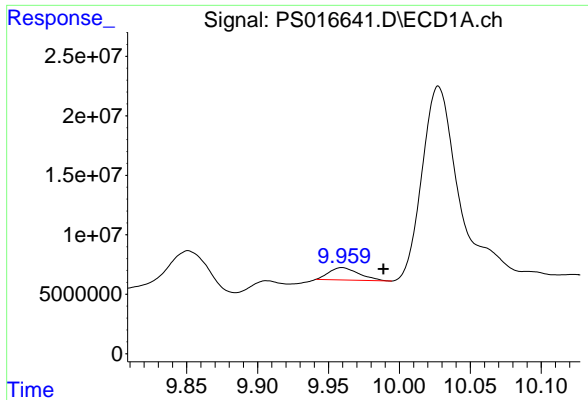
#12 2,4,5-T

R.T.: 9.383 min
 Delta R.T.: -0.057 min
 Response: 85924633
 Conc: 11.27 ng/ml



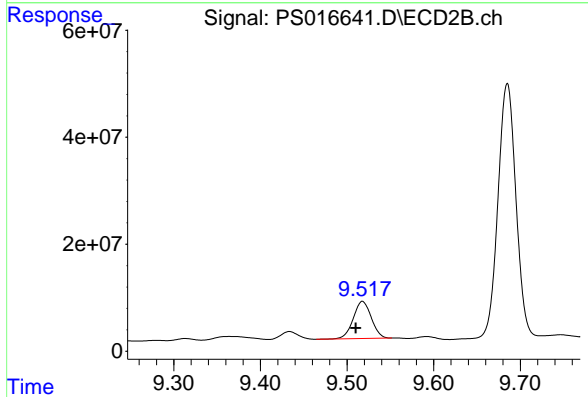
#12 2,4,5-T

R.T.: 8.990 min
 Delta R.T.: -0.015 min
 Response: 10470880
 Conc: 3.61 ng/ml

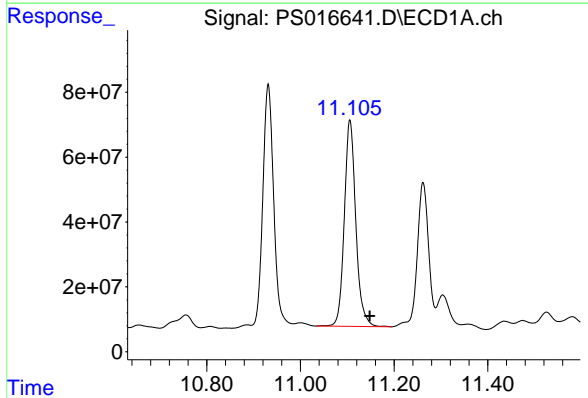


#13 2,4-DB
 R.T.: 9.960 min
 Delta R.T.: -0.029 min
 Response: 15315601
 Conc: 10.54 ng/ml

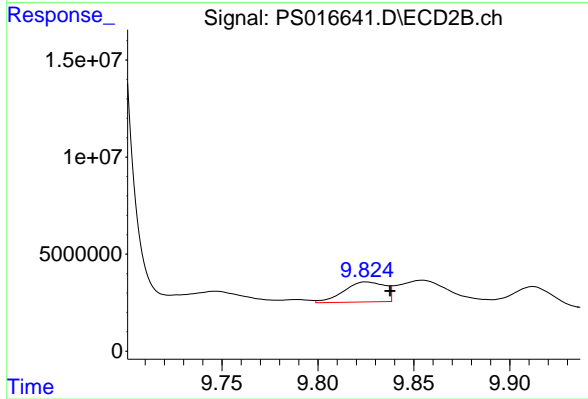
Instrument :
 ECD_S
ClientSampleId :
 SAMPLE-1-(150.00)



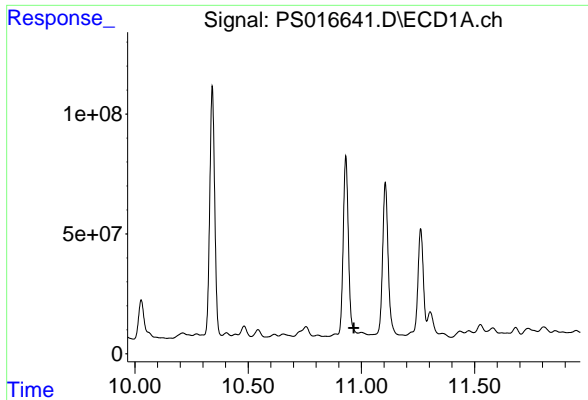
#13 2,4-DB
 R.T.: 9.518 min
 Delta R.T.: 0.008 min
 Response: 100701191
 Conc: 266.19 ng/ml



#14 DINOSEB
 R.T.: 11.106 min
 Delta R.T.: -0.042 min
 Response: 1084240045
 Conc: 205.61 ng/ml



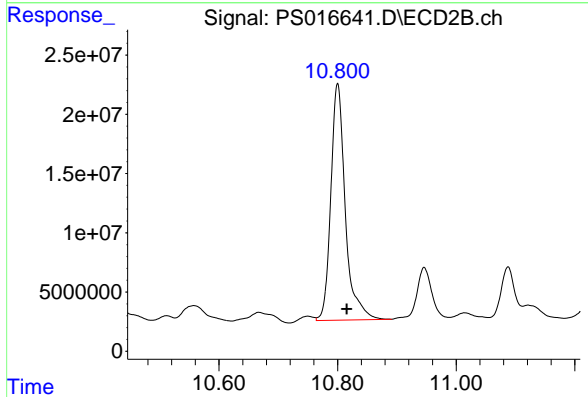
#14 DINOSEB
 R.T.: 9.825 min
 Delta R.T.: -0.013 min
 Response: 15485592
 Conc: 7.60 ng/ml



#15 Picloram

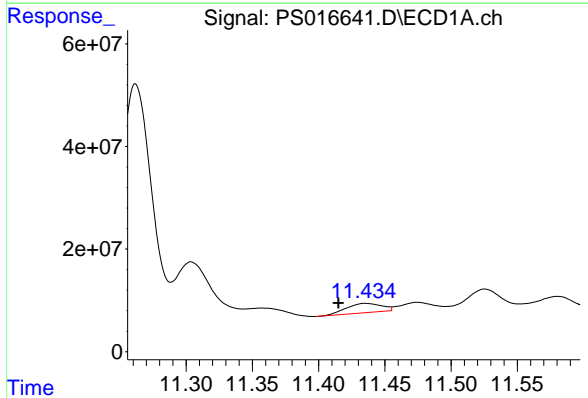
R.T.: 0.000 min
 Exp R.T.: 10.967 min
 Response: 0
 Conc: N.D.

Instrument :
 ECD_S
 ClientSampleId :
 SAMPLE-1-(150.00)



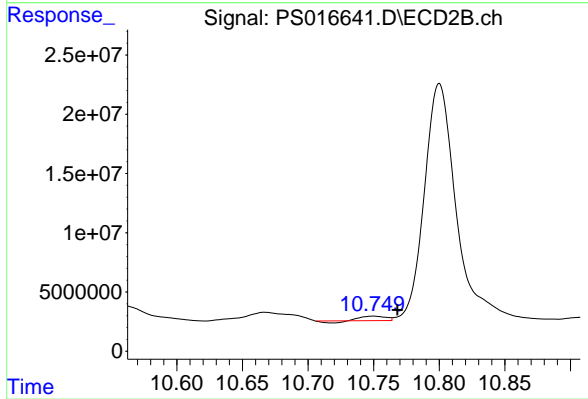
#15 Picloram

R.T.: 10.800 min
 Delta R.T.: -0.015 min
 Response: 338225042
 Conc: 84.00 ng/ml



#16 DCPA

R.T.: 11.436 min
 Delta R.T.: 0.020 min
 Response: 33728437
 Conc: 3.19 ng/ml



#16 DCPA

R.T.: 10.750 min
 Delta R.T.: -0.019 min
 Response: 3765373
 Conc: N.D.