

Data Path : Z:\pestpcbsrv\HPCHEM1\ECD_S\Data\PS082421\
 Data File : PS016624.D
 Signal(s) : Signal #1: ECD1A.ch Signal #2: ECD2B.ch
 Acq On : 24 Aug 2021 21:33
 Operator : DD\AJ
 Sample : M3434-35
 Misc :
 ALS Vial : 66 Sample Multiplier: 1

Instrument :
 ECD_S
 ClientSampleId :
 SWCS-15-0205

Integration File signal 1: autoint1.e
 Integration File signal 2: autoint2.e
 Quant Time: Aug 25 07:09:42 2021
 Quant Method : Z:\pestpcbsrv\HPCHEM1\ECD_S\Method\PS080221.M
 Quant Title : 8080.M
 QLast Update : Mon Aug 02 14:10:19 2021
 Response via : Initial Calibration
 Integrator: ChemStation

Volume Inj. : 2 µl
 Signal #1 Phase : Rtx-CLPesticides Signal #2 Phase: Rtx-CLPesticides2
 Signal #1 Info : 30M x 0.32mm x0.5 Signal #2 Info : 30M x 0.32mm x 0.25µm

Compound	RT#1	RT#2	Resp#1	Resp#2	ng/ml	ng/ml

System Monitoring Compounds						
4) S 2,4-DCAA	7.181	6.763	333.8E6	122.0E6	226.926	233.806

Target Compounds

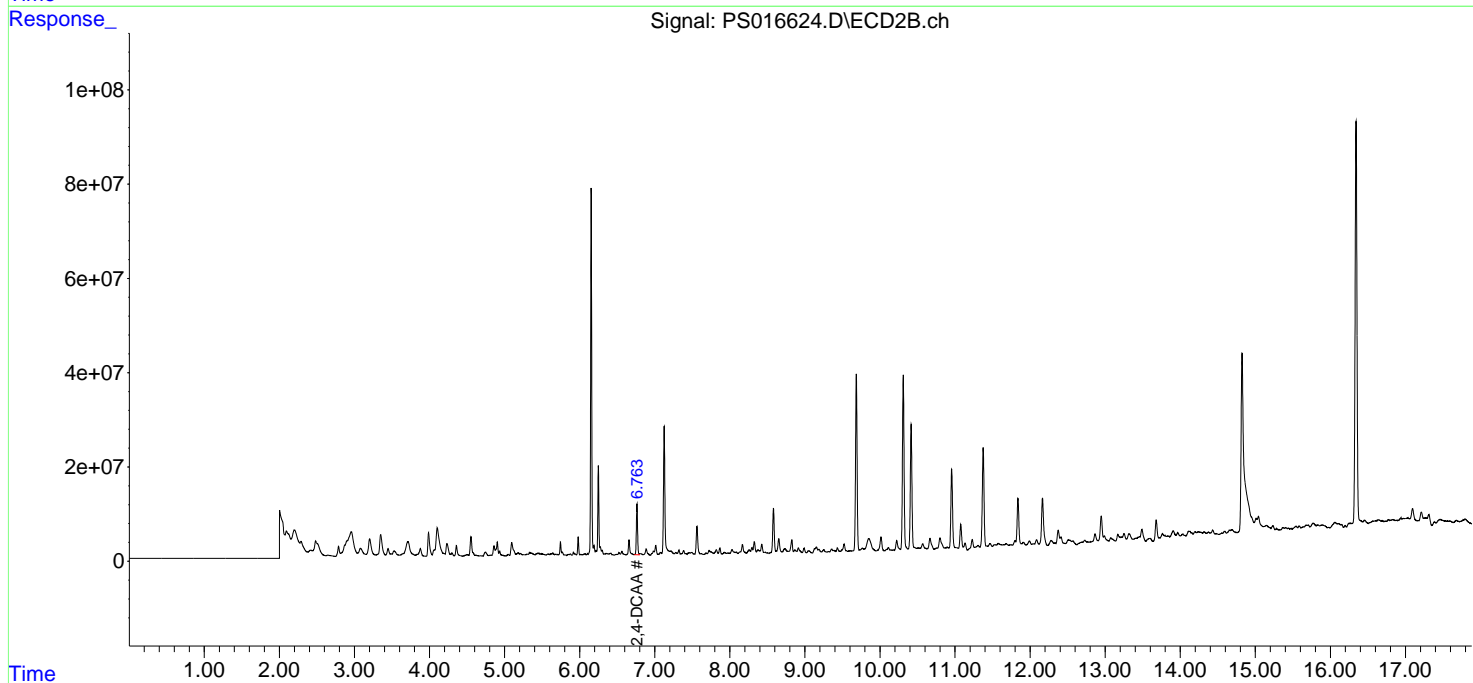
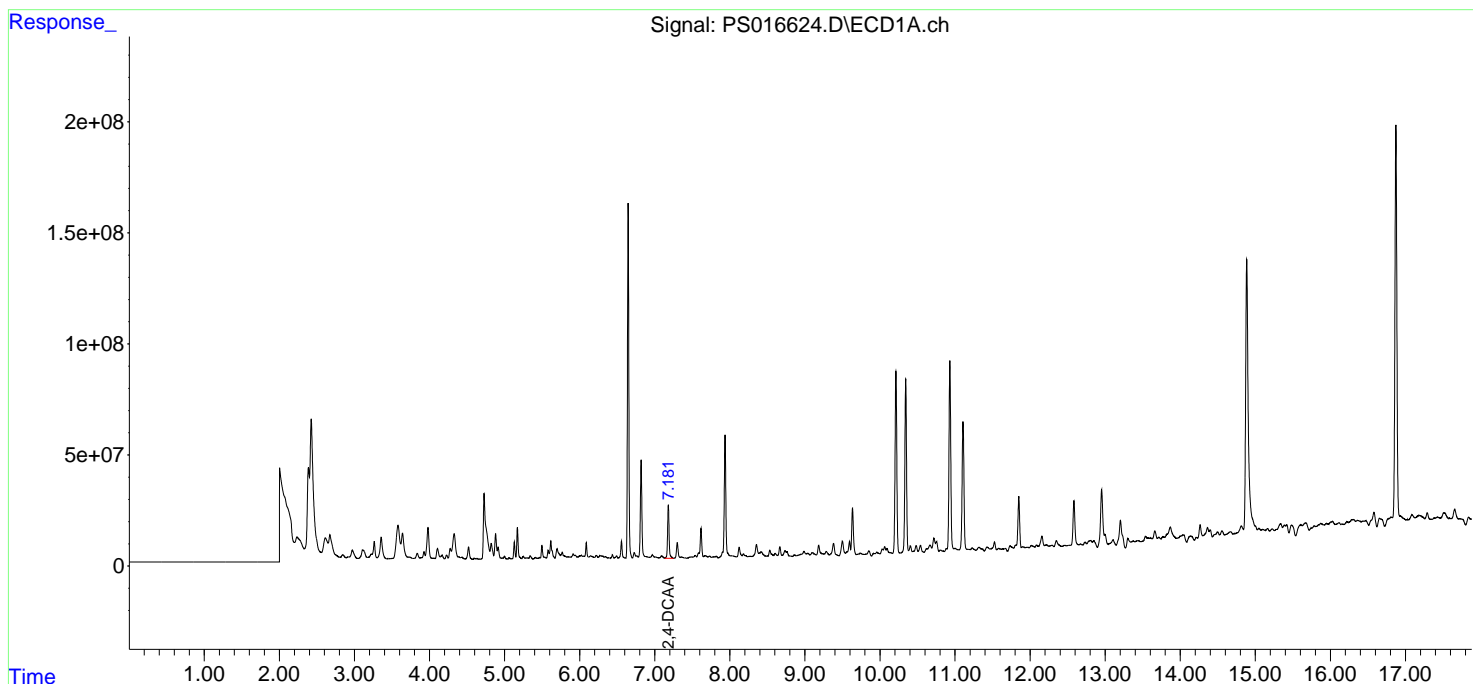
(f)=RT Delta > 1/2 Window (#)=Amounts differ by > 25% (m)=manual int.

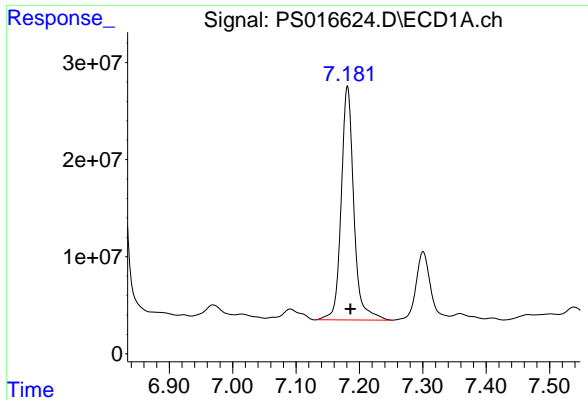
Data Path : Z:\pestpcbsrv\HPCHEM1\ECD_S\Data\PS082421\
 Data File : PS016624.D
 Signal(s) : Signal #1: ECD1A.ch Signal #2: ECD2B.ch
 Acq On : 24 Aug 2021 21:33
 Operator : DD\AJ
 Sample : M3434-35
 Misc :
 ALS Vial : 66 Sample Multiplier: 1

Instrument :
 ECD_S
 ClientSampleID :
 SWCS-15-0205

Integration File signal 1: autoint1.e
 Integration File signal 2: autoint2.e
 Quant Time: Aug 25 07:09:42 2021
 Quant Method : Z:\pestpcbsrv\HPCHEM1\ECD_S\Method\PS080221.M
 Quant Title : 8080.M
 QLast Update : Mon Aug 02 14:10:19 2021
 Response via : Initial Calibration
 Integrator: ChemStation

Volume Inj. : 2 µl
 Signal #1 Phase : Rtx-CLPesticides Signal #2 Phase: Rtx-CLPesticides2
 Signal #1 Info : 30M x 0.32mm x 0.5 Signal #2 Info : 30M x 0.32mm x 0.25µm

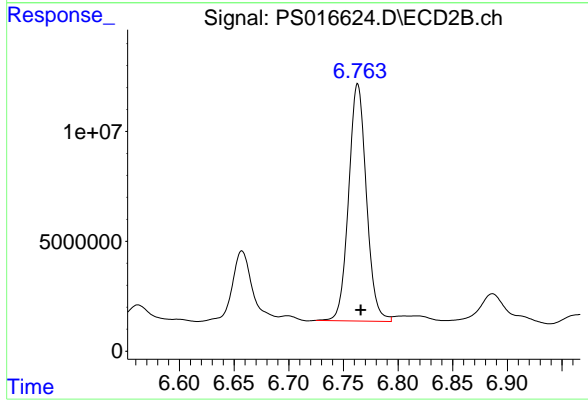




#4 2,4-DCAA

R.T.: 7.181 min
Delta R.T.: -0.005 min
Response: 333832662
Conc: 226.93 ng/ml

Instrument :
ECD_S
ClientSampleId :
SWCS-15-0205



#4 2,4-DCAA

R.T.: 6.763 min
Delta R.T.: -0.003 min
Response: 121958974
Conc: 233.81 ng/ml