

Data Path : Z:\pestpcbsrv\HPCHEM1\ECD_S\Data\PS082422\
 Data File : PS020352.D
 Signal(s) : Signal #1: ECD1A.ch Signal #2: ECD2B.ch
 Acq On : 24 Aug 2022 17:26
 Operator : AJ\MA
 Sample : I.BLK
 Misc :
 ALS Vial : 2 Sample Multiplier: 1

Instrument :
 ECD_S
 ClientSampleId :

Integration File signal 1: autoint1.e
 Integration File signal 2: autoint2.e
 Quant Time: Aug 24 23:54:08 2022
 Quant Method : Z:\pestpcbsrv\HPCHEM1\ECD_S\Method\PS080322.M
 Quant Title : 8080.M
 QLast Update : Thu Aug 04 02:05:37 2022
 Response via : Initial Calibration
 Integrator: ChemStation

Volume Inj. : 2 µl
 Signal #1 Phase : Rtx-CLPesticides Signal #2 Phase: Rtx-CLPesticides2
 Signal #1 Info : 30M x 0.32mm x0.5 Signal #2 Info : 30M x 0.32mm x 0.25µm

Compound	RT#1	RT#2	Resp#1	Resp#2	ng/ml	ng/ml

System Monitoring Compounds						
4) S 2,4-DCAA	7.183	6.761	1469.8E6	438.6E6	498.440	538.244
Target Compounds						
2) T 3,5-DICHL...	6.425	0.000	317349	0	<MDL	N.D. #
5) T DICAMBA	7.440f	0.000	281922	0	<MDL	N.D. #
6) T MCPP	7.520	0.000	3118508	0	<MDL	N.D. #
7) T MCPA	7.647	7.199	2469441	33305632	<MDL	7.912 #
9) T 2,4-D	8.363f	0.000	35066870	0	11.644	N.D. #
10) T Pentachlo...	8.653f	0.000	211819	0	<MDL	N.D. #
11) T 2,4,5-TP ...	9.163	0.000	1449901	0	<MDL	N.D. #
12) T 2,4,5-T	9.429	0.000	17406324	0	<MDL	N.D. #
15) T Picloram	10.966	10.864f	11850217	11131829	<MDL	1.475 #
16) T DCPA	11.403	0.000	4456778	0	<MDL	N.D. #

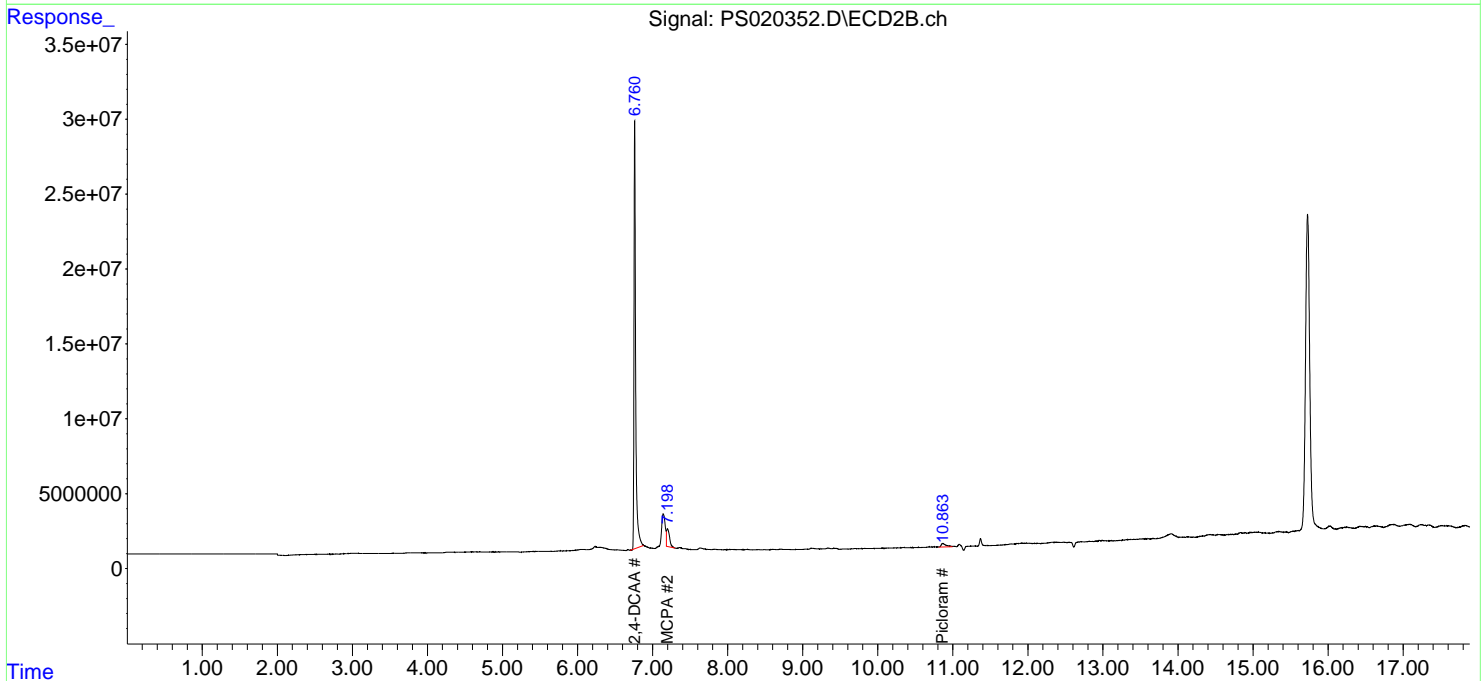
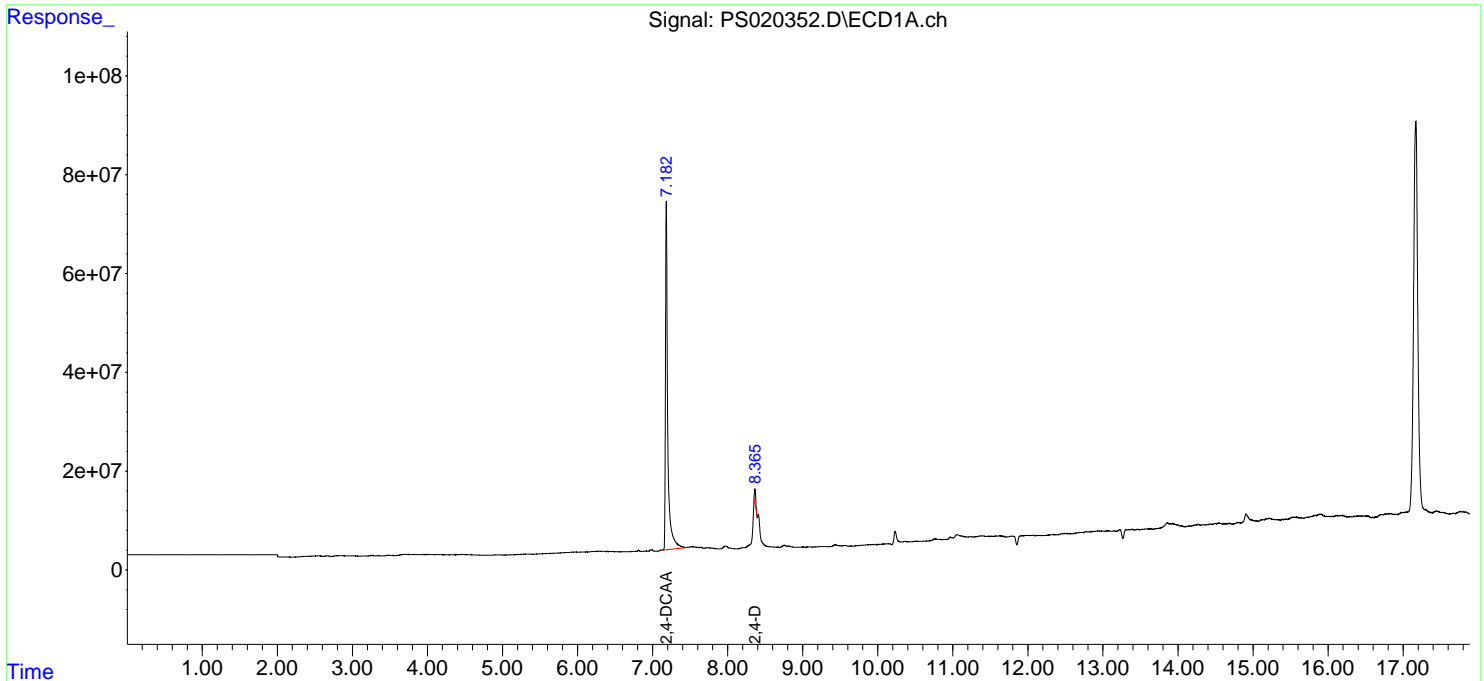
(f)=RT Delta > 1/2 Window (#)=Amounts differ by > 25% (m)=manual int.

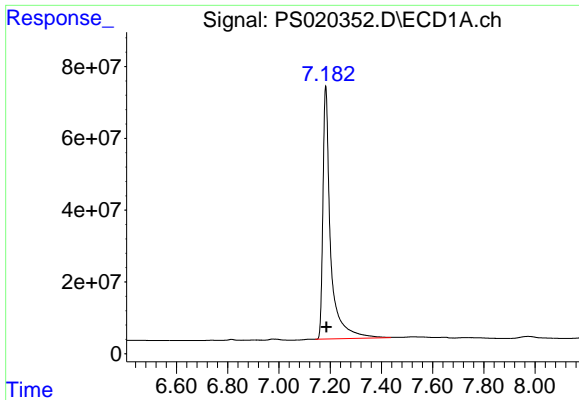
Data Path : Z:\pestpcbsrv\HPCHEM1\ECD_S\Data\PS082422\
 Data File : PS020352.D
 Signal(s) : Signal #1: ECD1A.ch Signal #2: ECD2B.ch
 Acq On : 24 Aug 2022 17:26
 Operator : AJ\MA
 Sample : I.BLK
 Misc :
 ALS Vial : 2 Sample Multiplier: 1

Instrument :
 ECD_S
 ClientSampleId :

Integration File signal 1: autoint1.e
 Integration File signal 2: autoint2.e
 Quant Time: Aug 24 23:54:08 2022
 Quant Method : Z:\pestpcbsrv\HPCHEM1\ECD_S\Method\PS080322.M
 Quant Title : 8080.M
 QLast Update : Thu Aug 04 02:05:37 2022
 Response via : Initial Calibration
 Integrator: ChemStation

Volume Inj. : 2 µl
 Signal #1 Phase : Rtx-CLPesticides Signal #2 Phase: Rtx-CLPesticides2
 Signal #1 Info : 30M x 0.32mm x0.5 Signal #2 Info : 30M x 0.32mm x 0.25µm

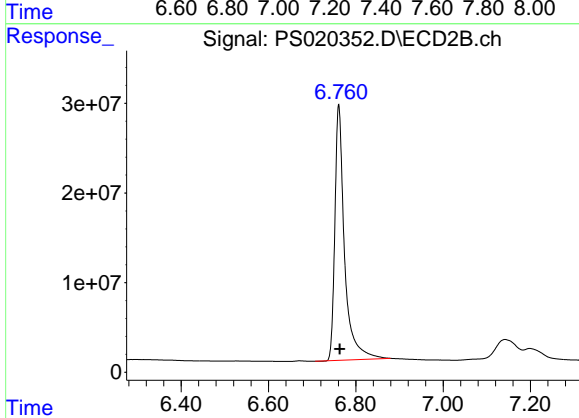




#4 2,4-DCAA

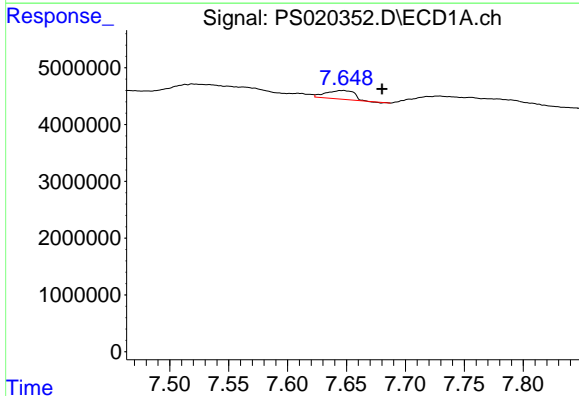
R.T.: 7.183 min
 Delta R.T.: -0.003 min
 Response: 1469761823
 Conc: 498.44 ng/ml

Instrument :
 ECD_S
 ClientSampleId :



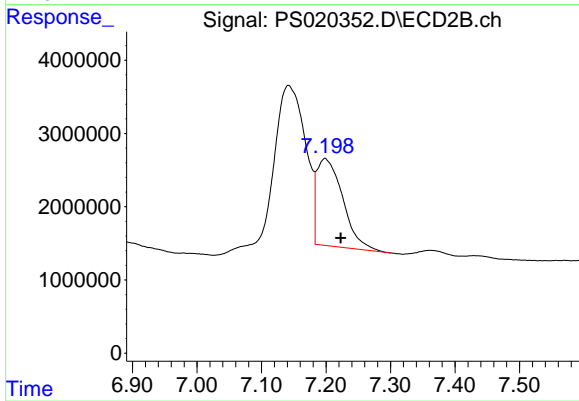
#4 2,4-DCAA

R.T.: 6.761 min
 Delta R.T.: -0.002 min
 Response: 438644758
 Conc: 538.24 ng/ml



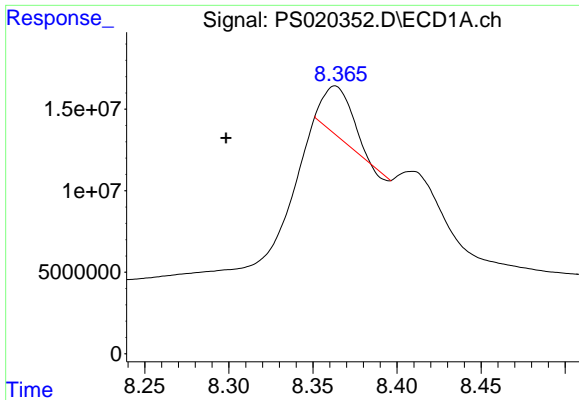
#7 MCPA

R.T.: 7.647 min
 Delta R.T.: -0.033 min
 Response: 2469441
 Conc: N.D.



#7 MCPA

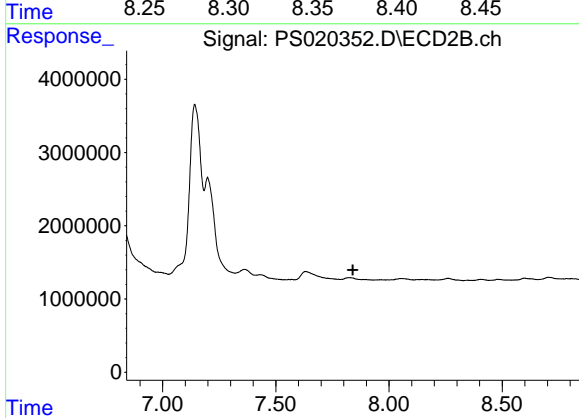
R.T.: 7.199 min
 Delta R.T.: -0.024 min
 Response: 33305632
 Conc: 7.91 ug/ml



#9 2,4-D

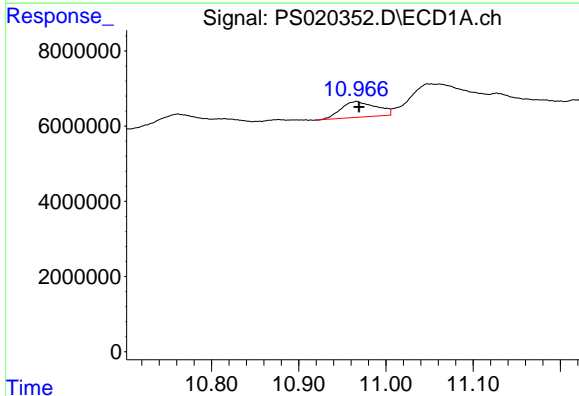
R.T.: 8.363 min
 Delta R.T.: 0.065 min
 Response: 35066870
 Conc: 11.64 ng/ml

Instrument :
 ECD_S
 ClientSampleId :



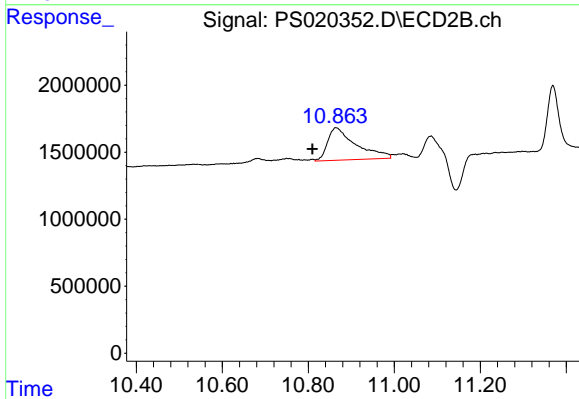
#9 2,4-D

R.T.: 0.000 min
 Exp R.T. : 7.840 min
 Response: 0
 Conc: N.D.



#15 Picloram

R.T.: 10.966 min
 Delta R.T.: -0.004 min
 Response: 11850217
 Conc: N.D.



#15 Picloram

R.T.: 10.864 min
 Delta R.T.: 0.054 min
 Response: 11131829
 Conc: 1.48 ng/ml