

Data Path : Z:\pestpcbsrv\HPCHEM1\ECD\_S\Data\PS082521\  
 Data File : PS016679.D  
 Signal(s) : Signal #1: ECD1A.ch Signal #2: ECD2B.ch  
 Acq On : 25 Aug 2021 19:58  
 Operator : DD\AJ  
 Sample : M3463-19  
 Misc :  
 ALS Vial : 23 Sample Multiplier: 1

Instrument :  
 ECD\_S  
 ClientSampleId :  
 SWCS-18-0204

Integration File signal 1: autoint1.e  
 Integration File signal 2: autoint2.e  
 Quant Time: Aug 26 01:42:37 2021  
 Quant Method : Z:\pestpcbsrv\HPCHEM1\ECD\_S\Method\PS080221.M  
 Quant Title : 8080.M  
 QLast Update : Mon Aug 02 14:10:19 2021  
 Response via : Initial Calibration  
 Integrator: ChemStation

Volume Inj. : 2 µl  
 Signal #1 Phase : Rtx-CLPesticides Signal #2 Phase: Rtx-CLPesticides2  
 Signal #1 Info : 30M x 0.32mm x0.5 Signal #2 Info : 30M x 0.32mm x 0.25µm

	Compound	RT#1	RT#2	Resp#1	Resp#2	ng/ml	ng/ml
-----							
System Monitoring Compounds							
4) S	2,4-DCAA	7.181	6.763	433.1E6	160.4E6	294.402	307.443
Target Compounds							
1) T	Dalapon	2.974f	2.483	47863529	78119309	23.724	112.137 #
2) T	3,5-DICHL...	6.437	5.940	6882226	1196147	3.269	1.515 #
3) T	4-Nitroph...	0.000	6.419	0	1519395	N.D.	4.945
5) T	DICAMBA	0.000	6.887f	0	9881421	N.D.	4.535
6) T	MCPP	7.588	7.053	-1667517	3638710	N.D.	2.106
7) T	MCPA	7.731	7.219	27078577	13911719	4.396	5.103
8) T	DICHLORPROP	8.033	7.564	48322693	9851098	35.907	18.184 #
9) T	2,4-D	8.355f	7.869	127.0E6	4774369	84.003	7.536 #
10) T	Pentachlo...	8.601	8.261	24147828	11751389	1.230	1.586 #
11) T	2,4,5-TP ...	9.191	8.629	-2591010	5522737	N.D.	1.893
12) T	2,4,5-T	9.484f	8.989	19196239	5977658	2.518	2.064
13) T	2,4-DB	9.988	9.522	851946	15169249	<MDL	40.098 #
14) T	DINOSEB	11.136	9.855	66004565	34834313	12.517	17.098 #
15) T	Picloram	10.999	10.814	31146473	8490422	3.121	2.109 #
16) T	DCPA	11.430	10.763	34510994	-2560642	3.265	N.D. #
-----							

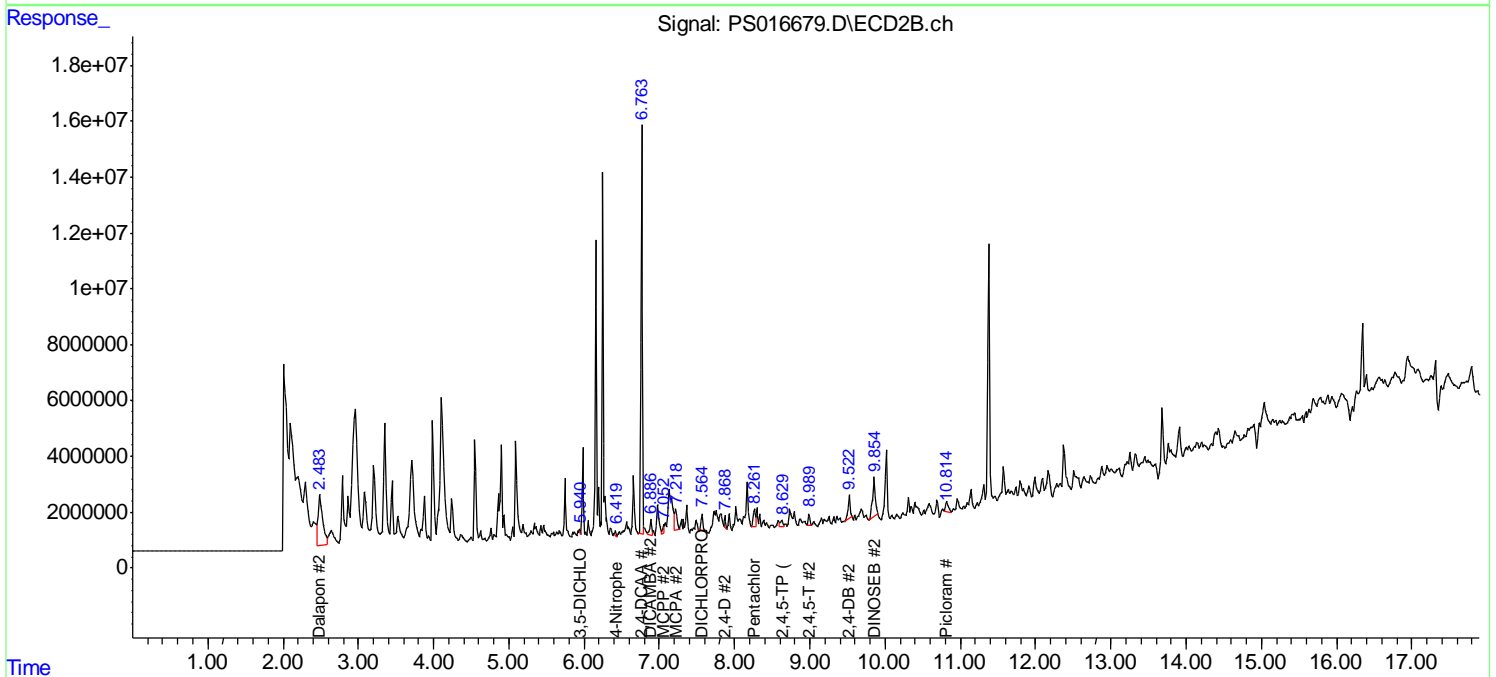
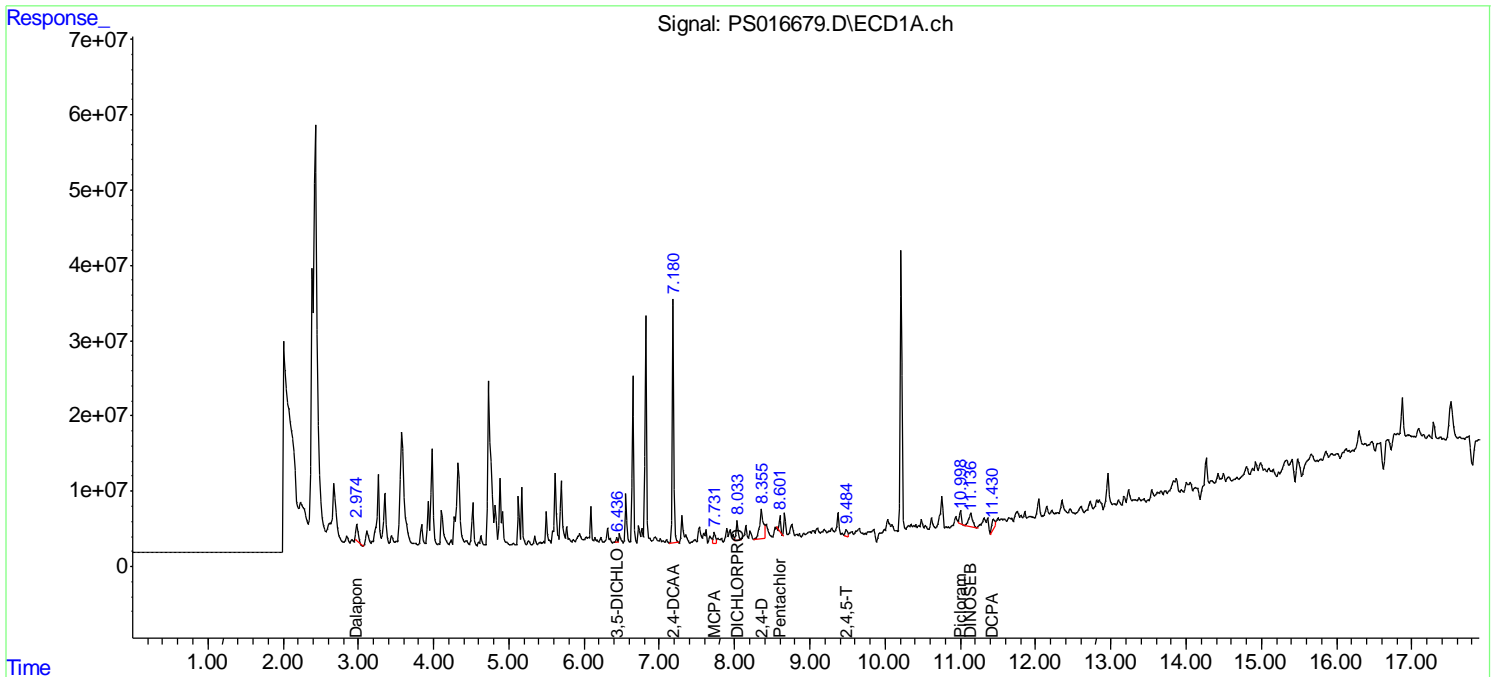
(f)=RT Delta > 1/2 Window (#)=Amounts differ by > 25% (m)=manual int.

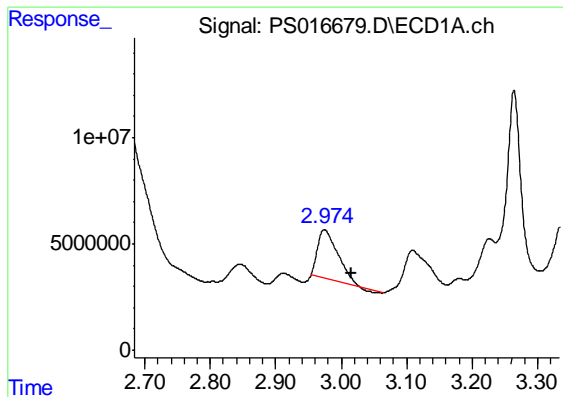
Data Path : Z:\pestpcbsrv\HPCHEM1\ECD\_S\Data\PS082521\  
 Data File : PS016679.D  
 Signal(s) : Signal #1: ECD1A.ch Signal #2: ECD2B.ch  
 Acq On : 25 Aug 2021 19:58  
 Operator : DD\AJ  
 Sample : M3463-19  
 Misc :  
 ALS Vial : 23 Sample Multiplier: 1

Instrument :  
 ECD\_S  
 ClientSampled :  
 SWCS-18-0204

Integration File signal 1: autoint1.e  
 Integration File signal 2: autoint2.e  
 Quant Time: Aug 26 01:42:37 2021  
 Quant Method : Z:\pestpcbsrv\HPCHEM1\ECD\_S\Method\PS080221.M  
 Quant Title : 8080.M  
 QLast Update : Mon Aug 02 14:10:19 2021  
 Response via : Initial Calibration  
 Integrator: ChemStation

Volume Inj. : 2 µl  
 Signal #1 Phase : Rtx-CLPesticides Signal #2 Phase: Rtx-CLPesticides2  
 Signal #1 Info : 30M x 0.32mm x0.5 Signal #2 Info : 30M x 0.32mm x 0.25µm

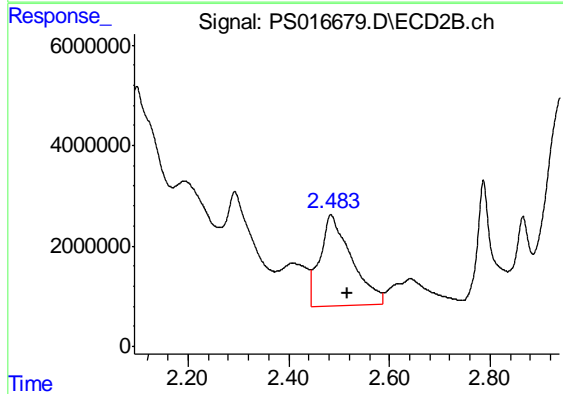




#1 Dalapon

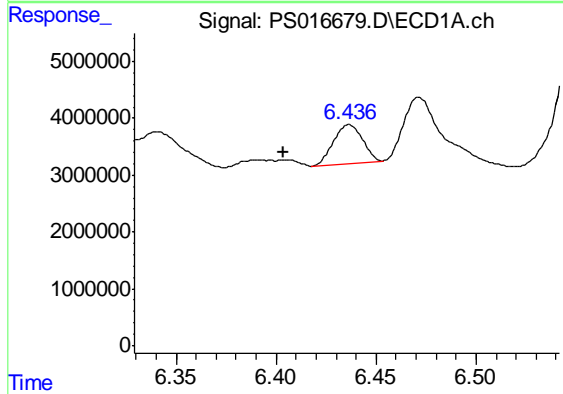
R.T.: 2.974 min  
 Delta R.T.: -0.041 min  
 Response: 47863529  
 Conc: 23.72 ng/ml

Instrument :  
 ECD\_S  
 ClientSampleId :  
 SWCS-18-0204



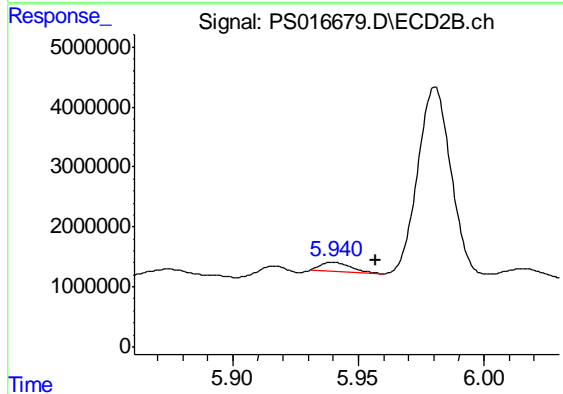
#1 Dalapon

R.T.: 2.483 min  
 Delta R.T.: -0.034 min  
 Response: 78119309  
 Conc: 112.14 ng/ml



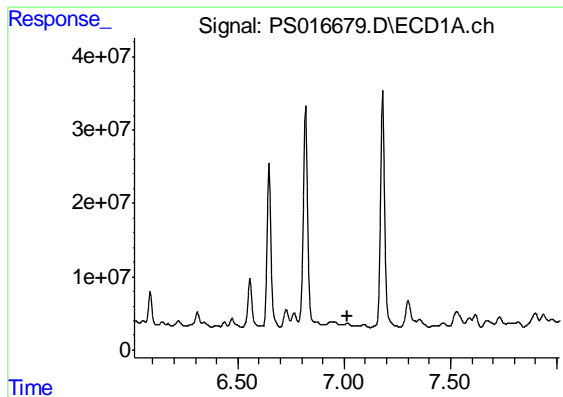
#2 3,5-DICHLOROBENZOIC ACID

R.T.: 6.437 min  
 Delta R.T.: 0.033 min  
 Response: 6882226  
 Conc: 3.27 ng/ml



#2 3,5-DICHLOROBENZOIC ACID

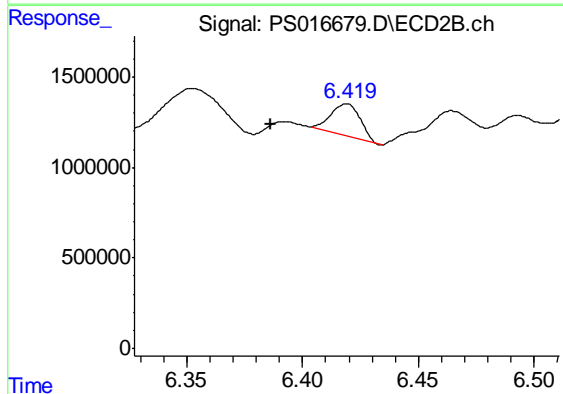
R.T.: 5.940 min  
 Delta R.T.: -0.017 min  
 Response: 1196147  
 Conc: 1.51 ng/ml



#3 4-Nitrophenol

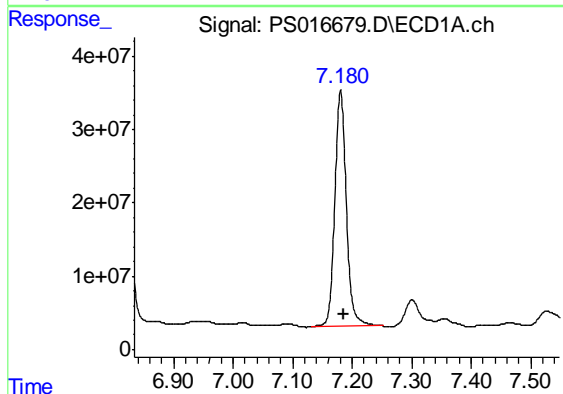
R.T.: 0.000 min  
 Exp R.T. : 7.013 min  
 Response: 0  
 Conc: N.D.

Instrument :  
 ECD\_S  
 ClientSampleId :  
 SWCS-18-0204



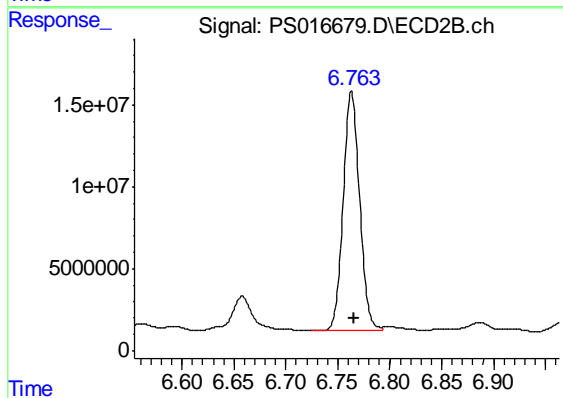
#3 4-Nitrophenol

R.T.: 6.419 min  
 Delta R.T.: 0.033 min  
 Response: 1519395  
 Conc: 4.94 ng/ml



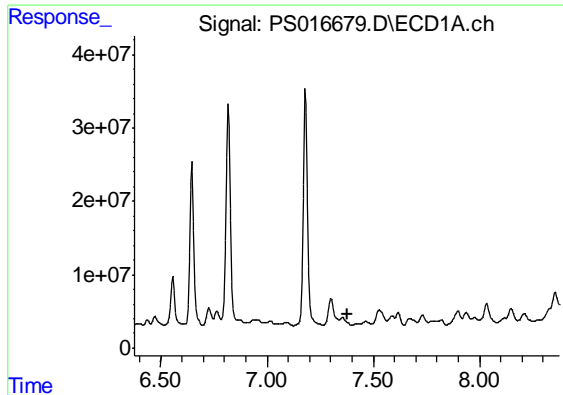
#4 2,4-DCAA

R.T.: 7.181 min  
 Delta R.T.: -0.005 min  
 Response: 433097013  
 Conc: 294.40 ng/ml



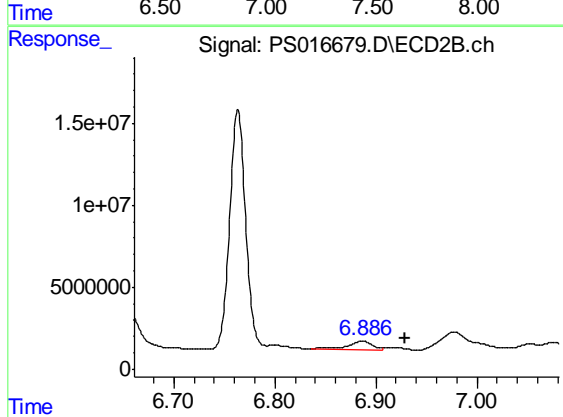
#4 2,4-DCAA

R.T.: 6.763 min  
 Delta R.T.: -0.003 min  
 Response: 160369656  
 Conc: 307.44 ng/ml

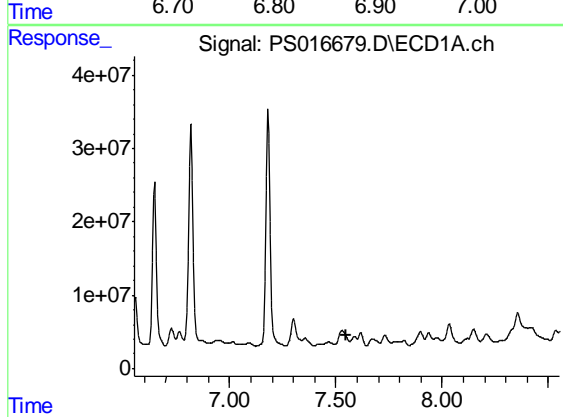


#5 DICAMBA  
 R.T.: 0.000 min  
 Exp R.T. : 7.377 min  
 Response: 0  
 Conc: N.D.

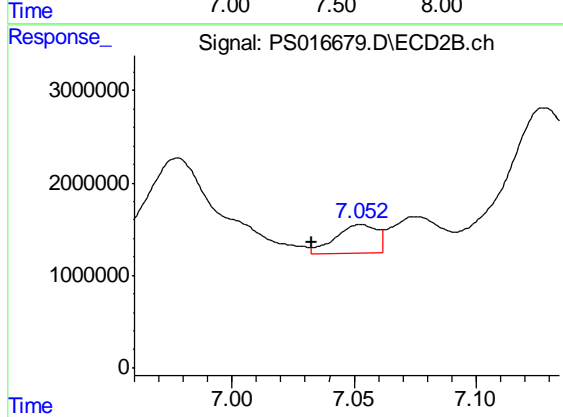
Instrument :  
 ECD\_S  
 ClientSampleId :  
 SWCS-18-0204



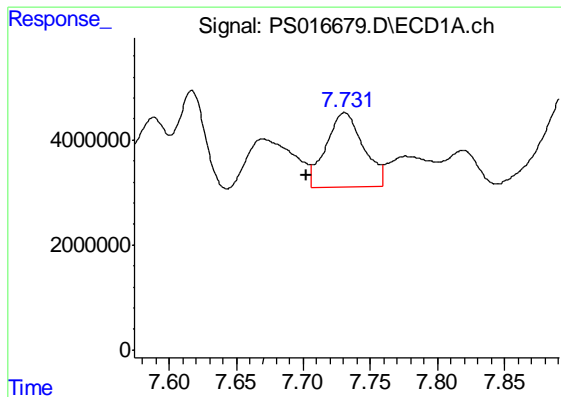
#5 DICAMBA  
 R.T.: 6.887 min  
 Delta R.T.: -0.043 min  
 Response: 9881421  
 Conc: 4.53 ng/ml



#6 MCPP  
 R.T.: 7.588 min  
 Delta R.T.: 0.037 min  
 Response: -1667517  
 Conc: N.D.



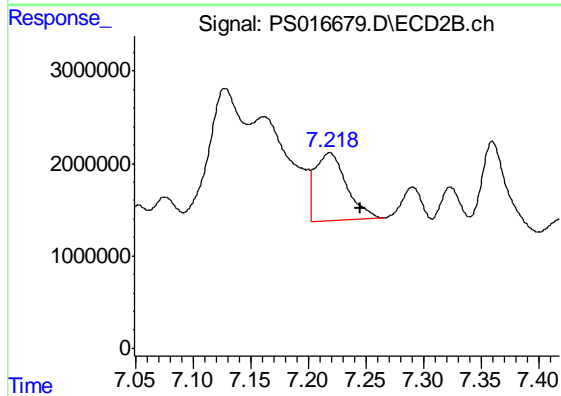
#6 MCPP  
 R.T.: 7.053 min  
 Delta R.T.: 0.020 min  
 Response: 3638710  
 Conc: 2.11 ug/ml



#7 MCPA

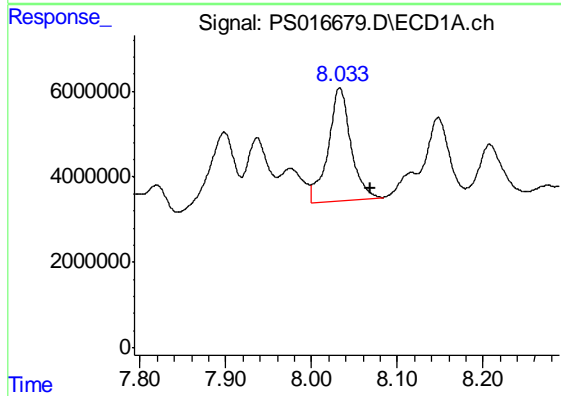
R.T.: 7.731 min  
 Delta R.T.: 0.029 min  
 Response: 27078577  
 Conc: 4.40 ug/ml

Instrument :  
 ECD\_S  
 ClientSampleId :  
 SWCS-18-0204



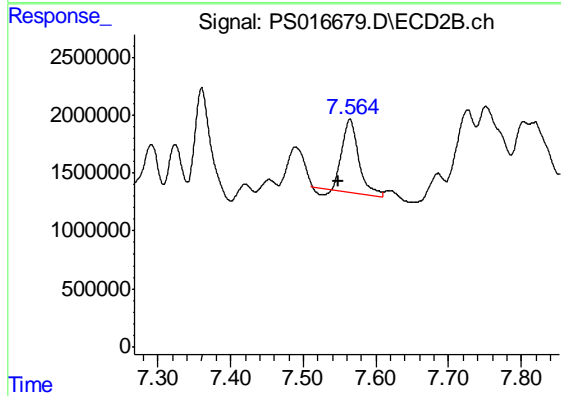
#7 MCPA

R.T.: 7.219 min  
 Delta R.T.: -0.027 min  
 Response: 13911719  
 Conc: 5.10 ug/ml



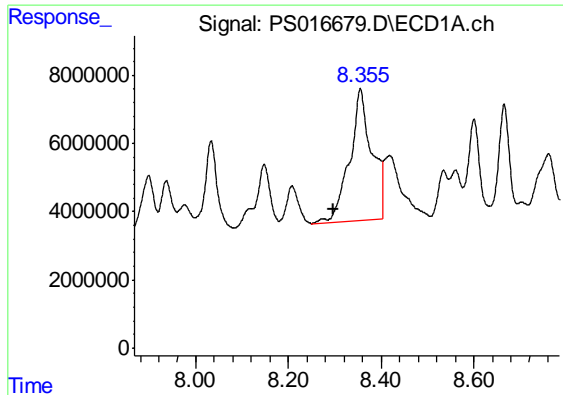
#8 DICHLORPROP

R.T.: 8.033 min  
 Delta R.T.: -0.036 min  
 Response: 48322693  
 Conc: 35.91 ng/ml



#8 DICHLORPROP

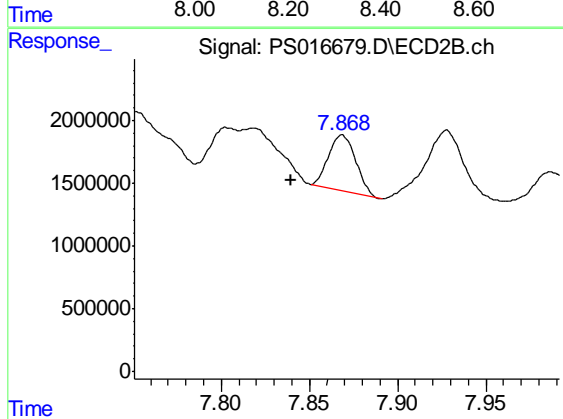
R.T.: 7.564 min  
 Delta R.T.: 0.015 min  
 Response: 9851098  
 Conc: 18.18 ng/ml



#9 2,4-D

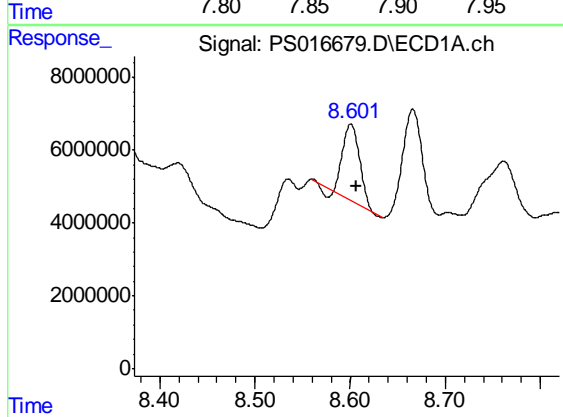
R.T.: 8.355 min  
 Delta R.T.: 0.058 min  
 Response: 127028408  
 Conc: 84.00 ng/ml

Instrument :  
 ECD\_S  
 ClientSampleId :  
 SWCS-18-0204



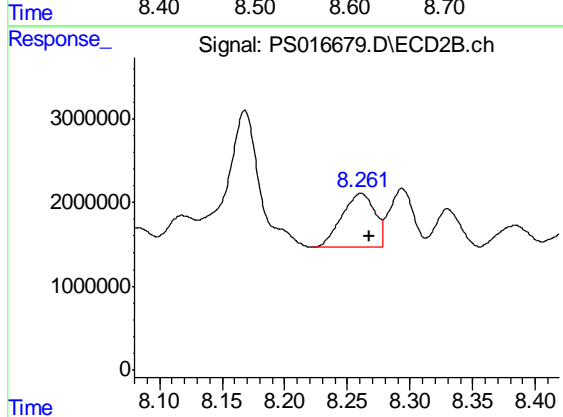
#9 2,4-D

R.T.: 7.869 min  
 Delta R.T.: 0.029 min  
 Response: 4774369  
 Conc: 7.54 ng/ml



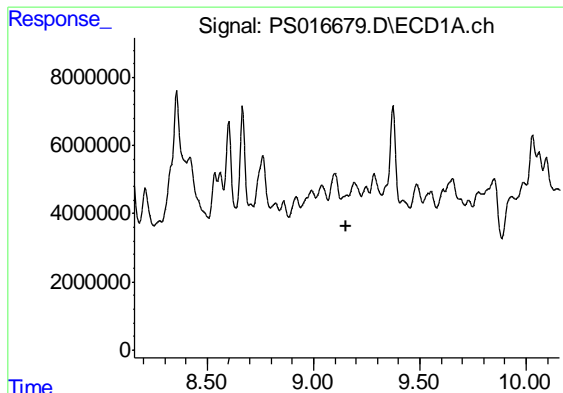
#10 Pentachlorophenol

R.T.: 8.601 min  
 Delta R.T.: -0.006 min  
 Response: 24147828  
 Conc: 1.23 ng/ml



#10 Pentachlorophenol

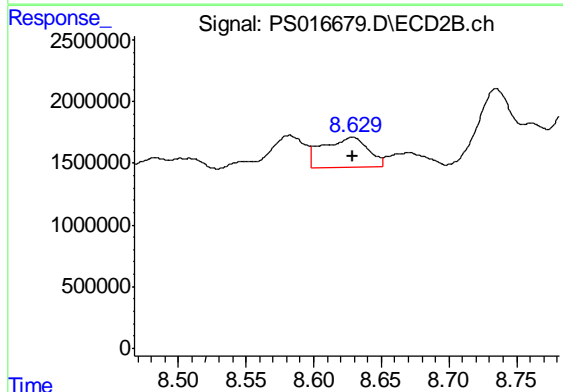
R.T.: 8.261 min  
 Delta R.T.: -0.007 min  
 Response: 11751389  
 Conc: 1.59 ng/ml



#11 2,4,5-TP (SILVEX)

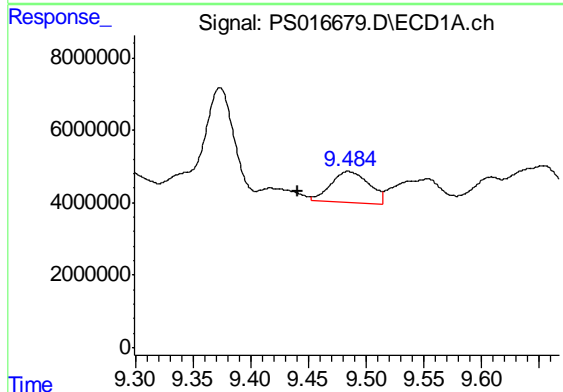
R.T.: 9.191 min  
 Delta R.T.: 0.034 min  
 Response: -2591010  
 Conc: N.D.

Instrument :  
 ECD\_S  
 ClientSampleId :  
 SWCS-18-0204



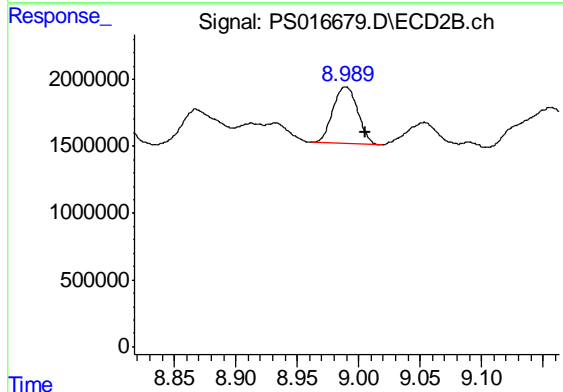
#11 2,4,5-TP (SILVEX)

R.T.: 8.629 min  
 Delta R.T.: 0.000 min  
 Response: 5522737  
 Conc: 1.89 ng/ml



#12 2,4,5-T

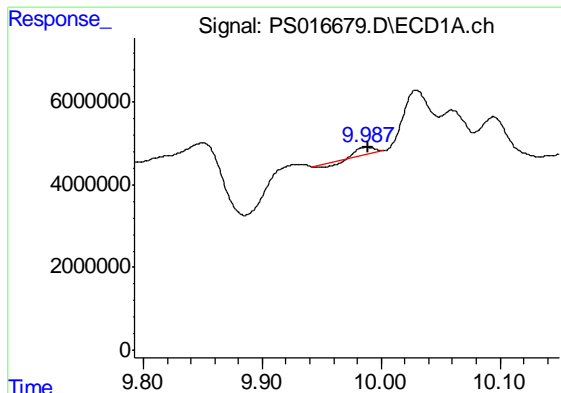
R.T.: 9.484 min  
 Delta R.T.: 0.044 min  
 Response: 19196239  
 Conc: 2.52 ng/ml



#12 2,4,5-T

R.T.: 8.989 min  
 Delta R.T.: -0.016 min  
 Response: 5977658  
 Conc: 2.06 ng/ml

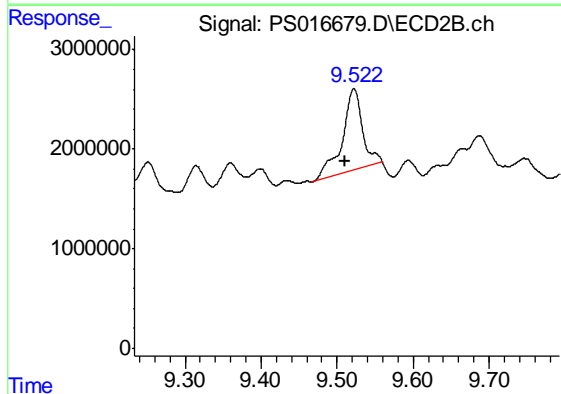




#13 2,4-DB

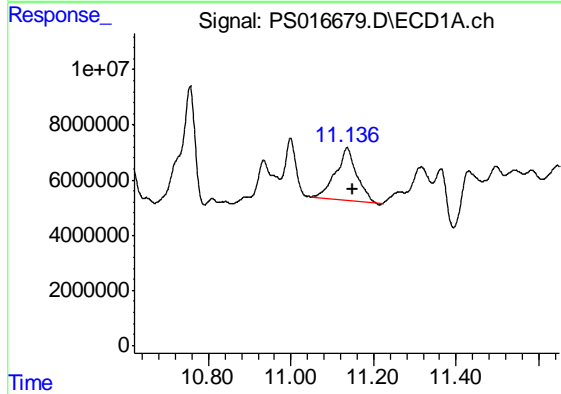
R.T.: 9.988 min  
 Delta R.T.: -0.001 min  
 Response: 851946  
 Conc: N.D.

Instrument :  
 ECD\_S  
 ClientSampleId :  
 SWCS-18-0204



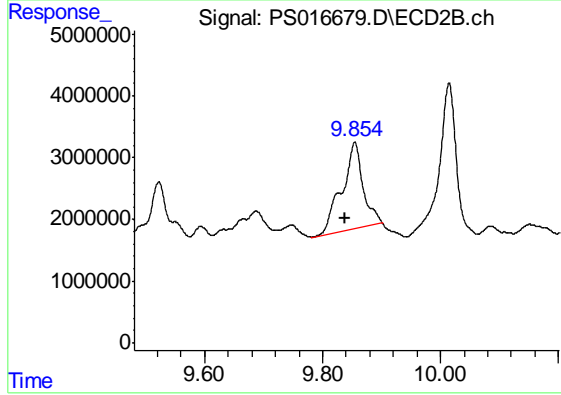
#13 2,4-DB

R.T.: 9.522 min  
 Delta R.T.: 0.012 min  
 Response: 15169249  
 Conc: 40.10 ng/ml



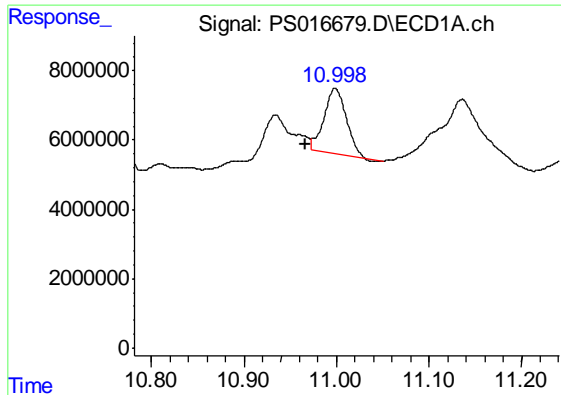
#14 DINOSEB

R.T.: 11.136 min  
 Delta R.T.: -0.012 min  
 Response: 66004565  
 Conc: 12.52 ng/ml



#14 DINOSEB

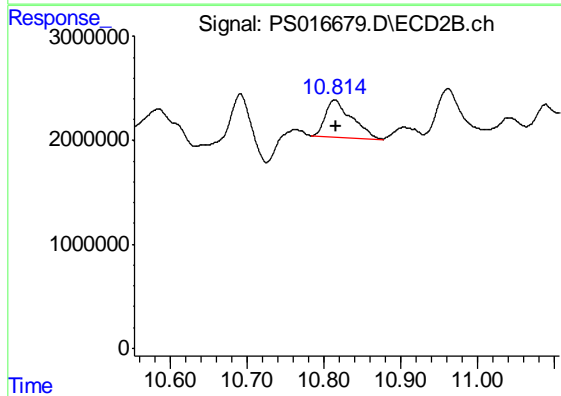
R.T.: 9.855 min  
 Delta R.T.: 0.017 min  
 Response: 34834313  
 Conc: 17.10 ng/ml



#15 Picloram

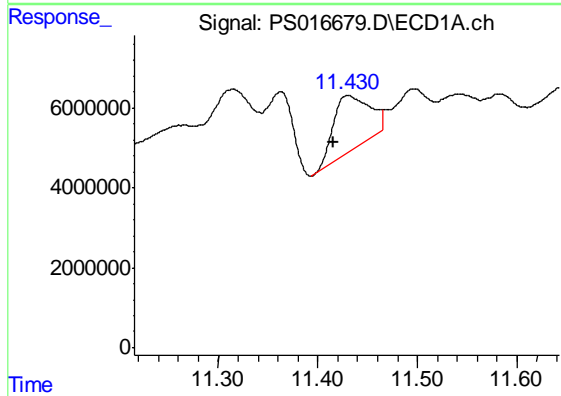
R.T.: 10.999 min  
 Delta R.T.: 0.032 min  
 Response: 31146473  
 Conc: 3.12 ng/ml

Instrument :  
 ECD\_S  
 ClientSampleId :  
 SWCS-18-0204



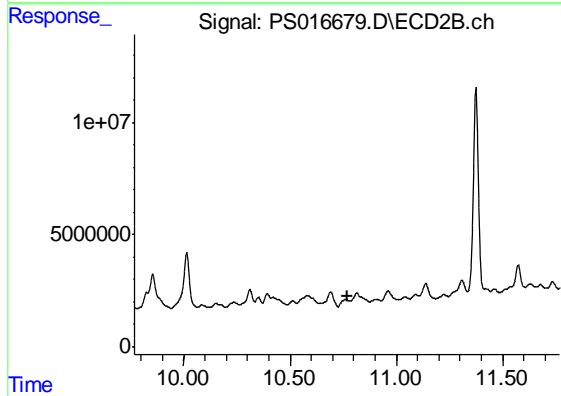
#15 Picloram

R.T.: 10.814 min  
 Delta R.T.: -0.001 min  
 Response: 8490422  
 Conc: 2.11 ng/ml



#16 DCPA

R.T.: 11.430 min  
 Delta R.T.: 0.015 min  
 Response: 34510994  
 Conc: 3.26 ng/ml



#16 DCPA

R.T.: 10.763 min  
 Delta R.T.: -0.006 min  
 Response: -2560642  
 Conc: N.D.