

Data Path : Z:\pestpcbsrv\HPCHEM1\ECD_S\Data\PS082620\
 Data File : PS011938.D
 Signal(s) : Signal #1: ECD1A.ch Signal #2: ECD2B.ch
 Acq On : 26 Aug 2020 18:18
 Operator : DD\AJ
 Sample : PB131216BL
 Misc :
 ALS Vial : 19 Sample Multiplier: 1

Instrument :
 ECD_S
 ClientSampleId :

Integration File signal 1: autoint1.e
 Integration File signal 2: autoint2.e
 Quant Time: Aug 26 18:37:09 2020
 Quant Method : Z:\pestpcbsrv\HPCHEM1\ECD_S\Method\PS081120.M
 Quant Title : 8080.M
 QLast Update : Tue Aug 11 15:43:16 2020
 Response via : Initial Calibration
 Integrator: ChemStation

Volume Inj. : 2 µl
 Signal #1 Phase : Rtx-CLPesticides Signal #2 Phase: Rtx-CLPesticides2
 Signal #1 Info : 30M x 0.32mm x0.5 Signal #2 Info : 30M x 0.32mm x 0.25µm

	Compound	RT#1	RT#2	Resp#1	Resp#2	ng/ml	ng/ml

System Monitoring Compounds							
4) S	2,4-DCAA	7.218	6.915	499.3E6	302.5E6	457.769	565.624
Target Compounds							
2) T	3,5-DICHL...	0.000	6.096	0	116.5E6	N.D.	141.609
3) T	4-Nitroph...	7.056	6.508	3677614	16892873	6.243	46.331 #
5) T	DICAMBA	7.397	7.048	12928098	17198392	3.156	7.960 #
6) T	MCPD	7.572	0.000	5909831	0	1.850	N.D. #
7) T	MCPA	7.765	7.375	25138180	29951448	5.527	10.931 #
8) T	DICHLORPROP	0.000	7.743	0	17872511	N.D.	31.653
9) T	2,4-D	8.289	0.000	10112180	0	8.956	N.D. #
11) T	2,4,5-TP ...	0.000	8.764	0	19195179	N.D.	6.565
12) T	2,4,5-T	9.412	0.000	17298540	0	2.919	N.D. #
16) T	DCPA	11.522	0.000	34691212	0	4.563	N.D. #

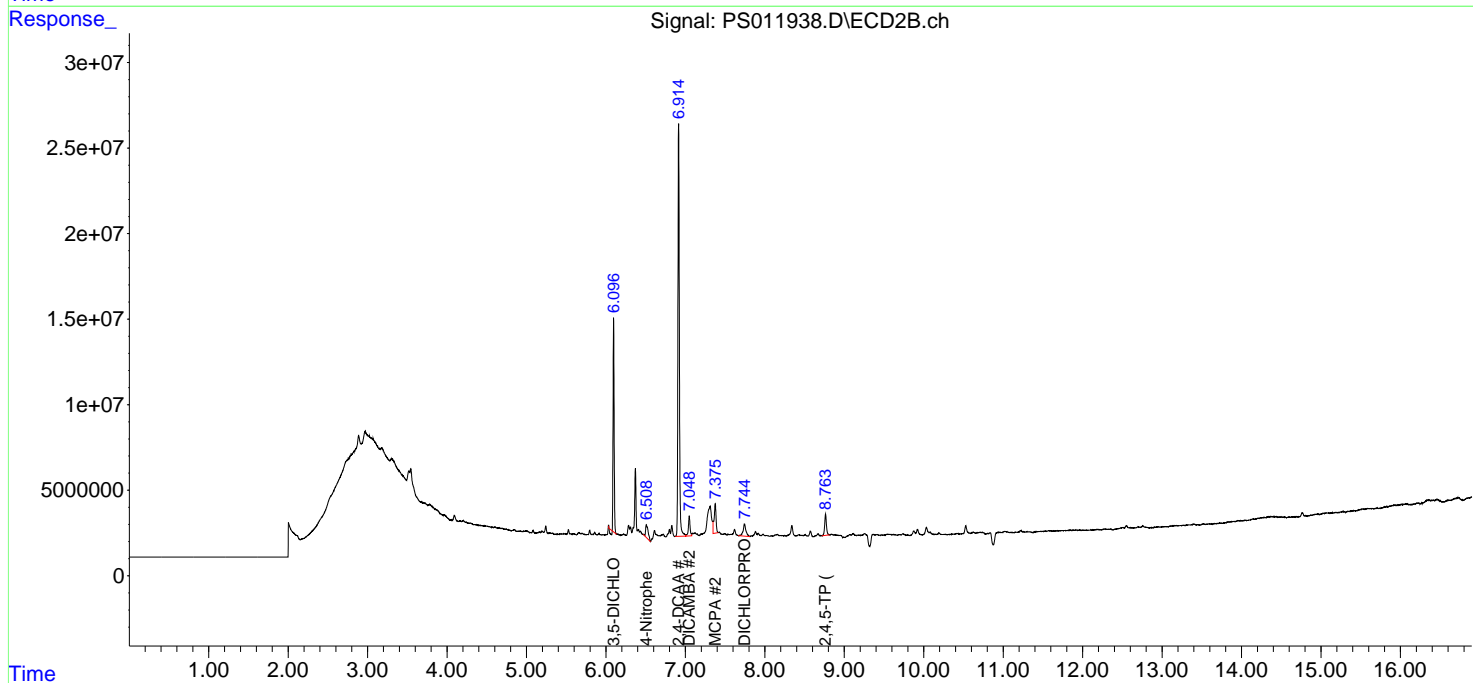
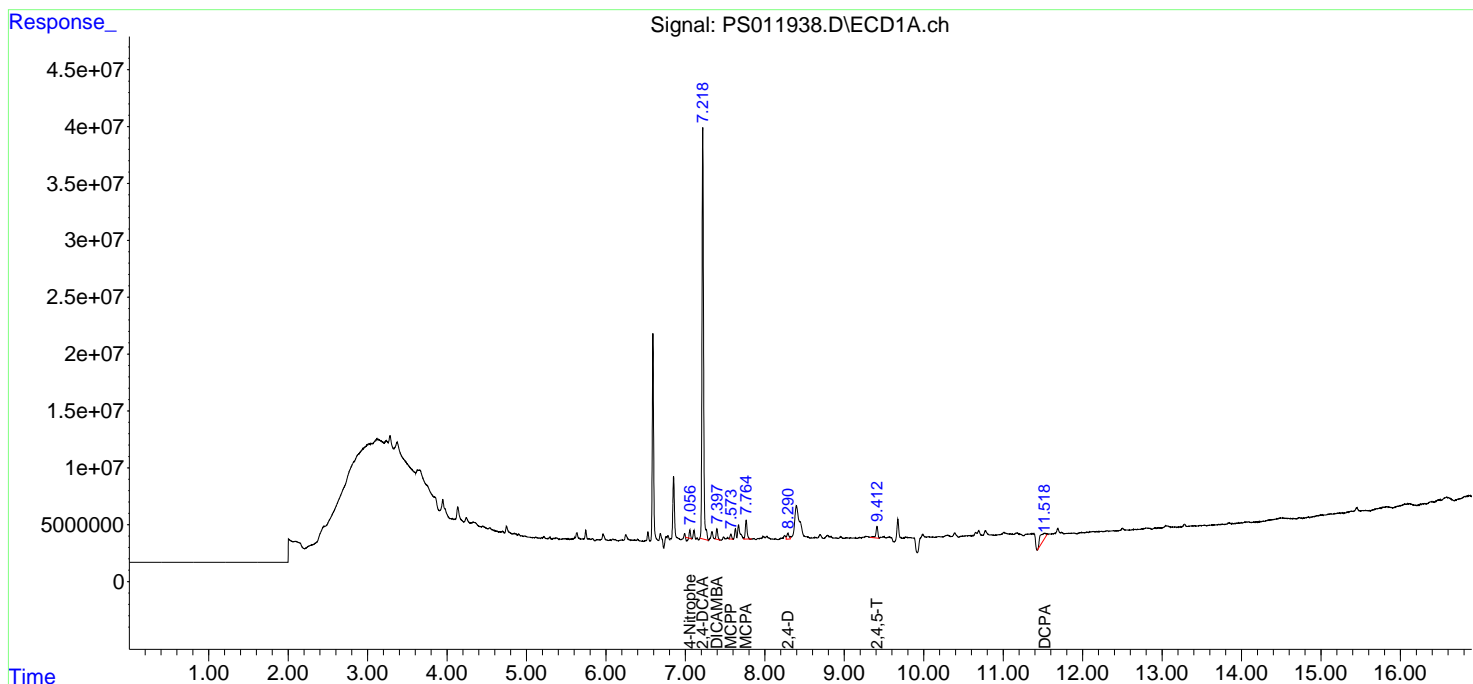
(f)=RT Delta > 1/2 Window (#)=Amounts differ by > 25% (m)=manual int.

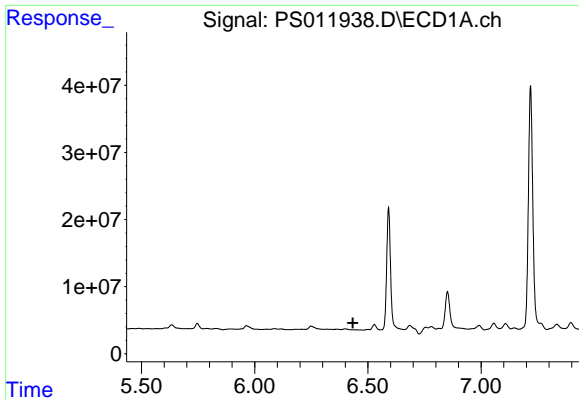
Data Path : Z:\pestpcbsrv\HPCHEM1\ECD_S\Data\PS082620\
 Data File : PS011938.D
 Signal(s) : Signal #1: ECD1A.ch Signal #2: ECD2B.ch
 Acq On : 26 Aug 2020 18:18
 Operator : DD\AJ
 Sample : PB131216BL
 Misc :
 ALS Vial : 19 Sample Multiplier: 1

Instrument :
 ECD_S
 ClientSampled :

Integration File signal 1: autoint1.e
 Integration File signal 2: autoint2.e
 Quant Time: Aug 26 18:37:09 2020
 Quant Method : Z:\pestpcbsrv\HPCHEM1\ECD_S\Method\PS081120.M
 Quant Title : 8080.M
 QLast Update : Tue Aug 11 15:43:16 2020
 Response via : Initial Calibration
 Integrator: ChemStation

Volume Inj. : 2 µl
 Signal #1 Phase : Rtx-CLPesticides Signal #2 Phase: Rtx-CLPesticides2
 Signal #1 Info : 30M x 0.32mm x0.5 Signal #2 Info : 30M x 0.32mm x 0.25µm

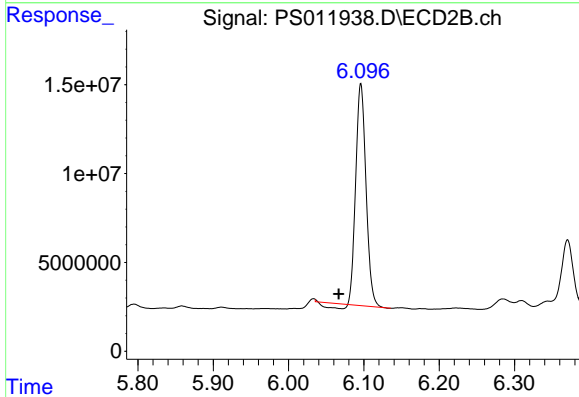




#2 3,5-DICHLORO BENZOIC ACID

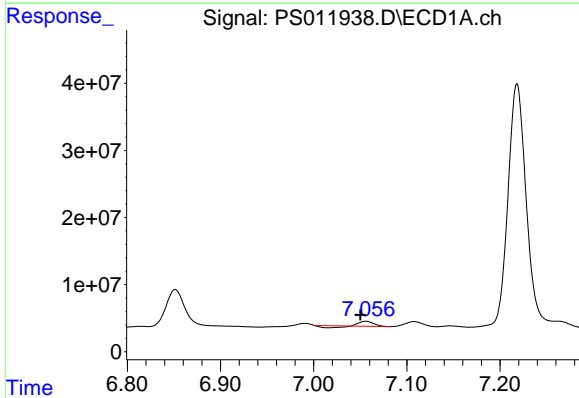
R.T.: 0.000 min
 Exp R.T.: 6.434 min
 Response: 0
 Conc: N.D.

Instrument :
 ECD_S
 ClientSampled :



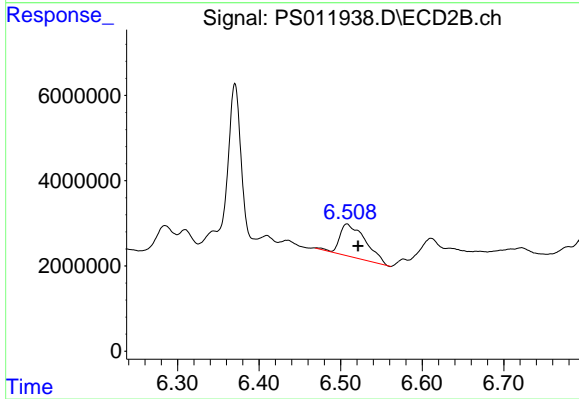
#2 3,5-DICHLORO BENZOIC ACID

R.T.: 6.096 min
 Delta R.T.: 0.030 min
 Response: 116490491
 Conc: 141.61 ng/ml



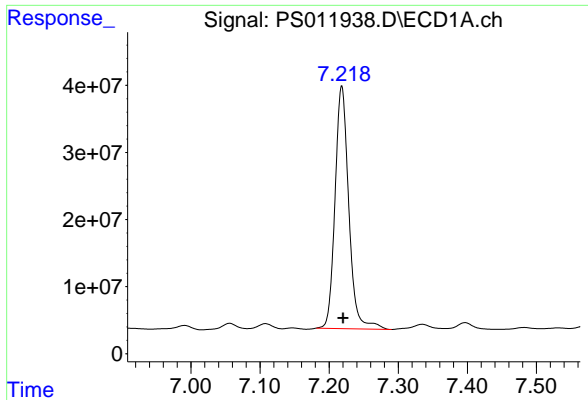
#3 4-Nitrophenol

R.T.: 7.056 min
 Delta R.T.: 0.006 min
 Response: 3677614
 Conc: 6.24 ng/ml



#3 4-Nitrophenol

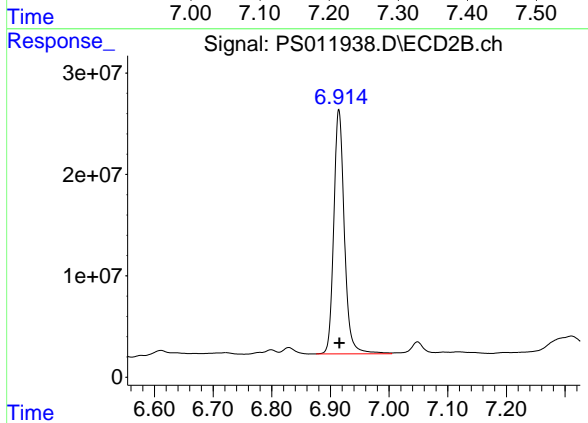
R.T.: 6.508 min
 Delta R.T.: -0.013 min
 Response: 16892873
 Conc: 46.33 ng/ml



#4 2,4-DCAA

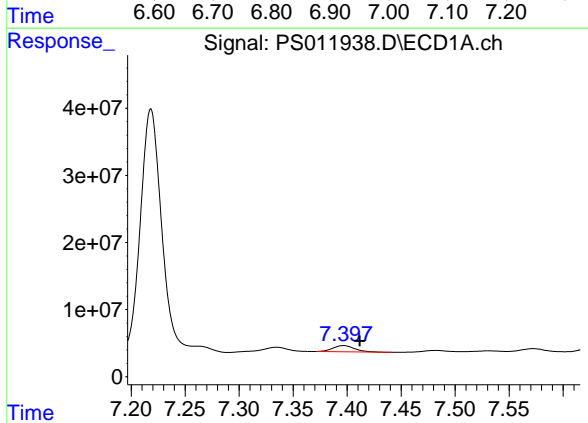
R.T.: 7.218 min
 Delta R.T.: -0.002 min
 Response: 499319558
 Conc: 457.77 ng/ml

Instrument :
 ECD_S
 ClientSampled :



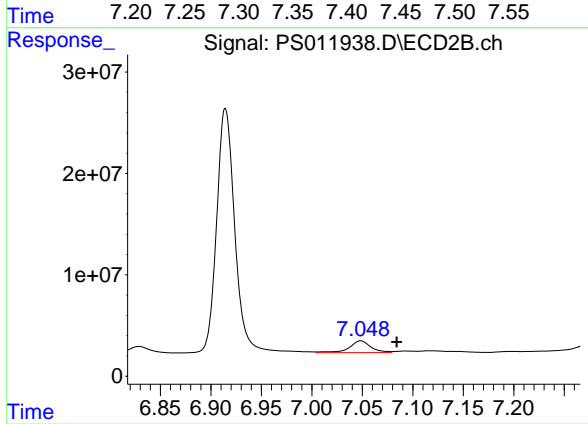
#4 2,4-DCAA

R.T.: 6.915 min
 Delta R.T.: 0.000 min
 Response: 302488318
 Conc: 565.62 ng/ml



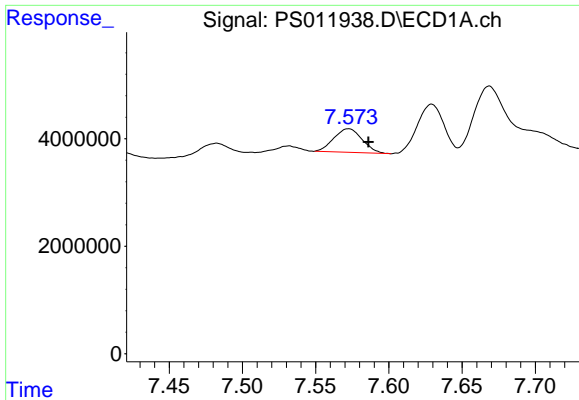
#5 DICAMBA

R.T.: 7.397 min
 Delta R.T.: -0.015 min
 Response: 12928098
 Conc: 3.16 ng/ml



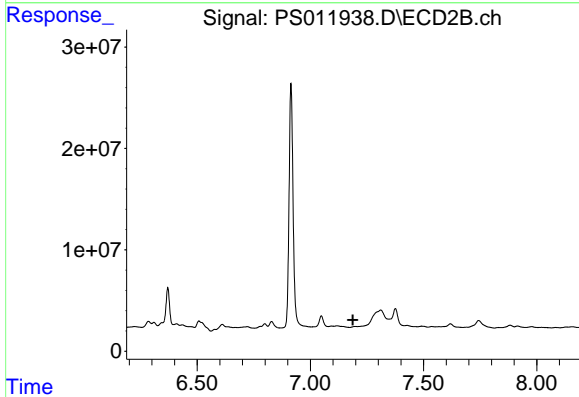
#5 DICAMBA

R.T.: 7.048 min
 Delta R.T.: -0.036 min
 Response: 17198392
 Conc: 7.96 ng/ml

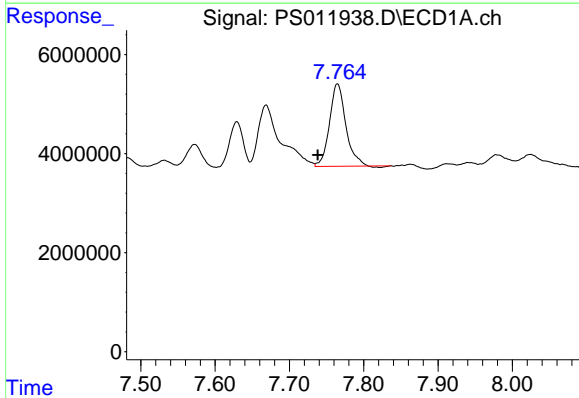


#6 MCP
 R.T.: 7.572 min
 Delta R.T.: -0.014 min
 Response: 5909831
 Conc: 1.85 ug/ml

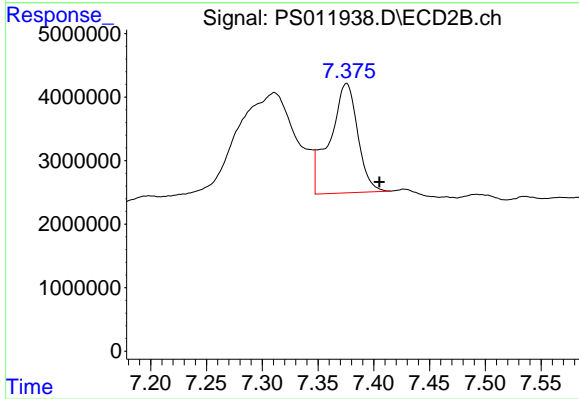
Instrument :
 ECD_S
 ClientSampled :



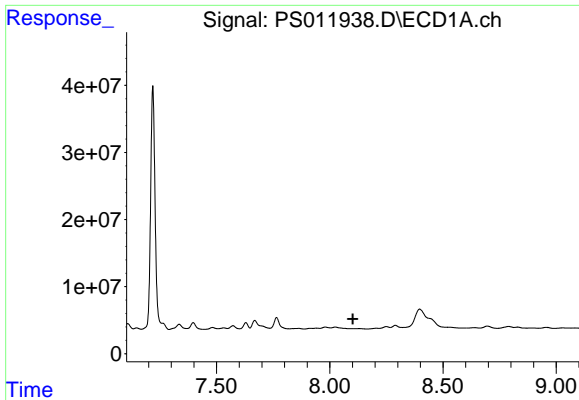
#6 MCP
 R.T.: 0.000 min
 Exp R.T. : 7.188 min
 Response: 0
 Conc: N.D.



#7 MCP
 R.T.: 7.765 min
 Delta R.T.: 0.027 min
 Response: 25138180
 Conc: 5.53 ug/ml



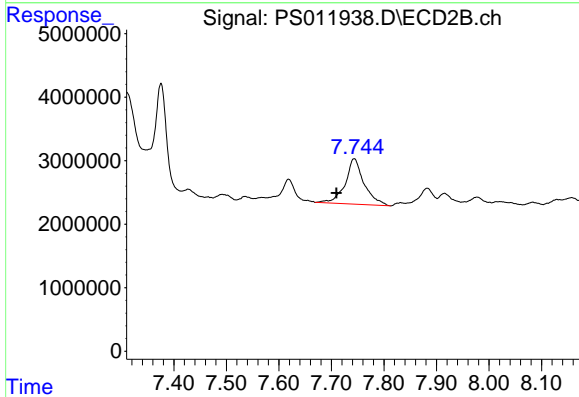
#7 MCP
 R.T.: 7.375 min
 Delta R.T.: -0.030 min
 Response: 29951448
 Conc: 10.93 ug/ml



#8 DICHLORPROP

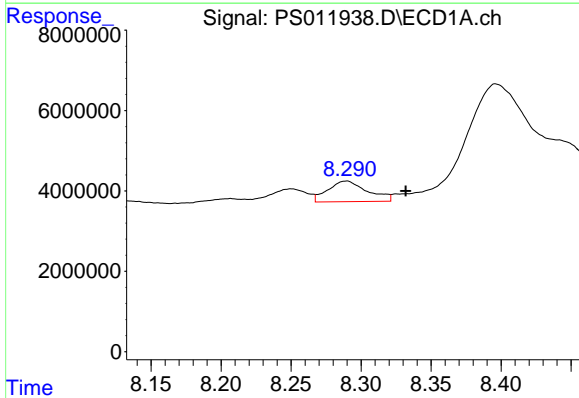
R.T.: 0.000 min
 Exp R.T.: 8.102 min
 Response: 0
 Conc: N.D.

Instrument :
 ECD_S
 ClientSampleId :



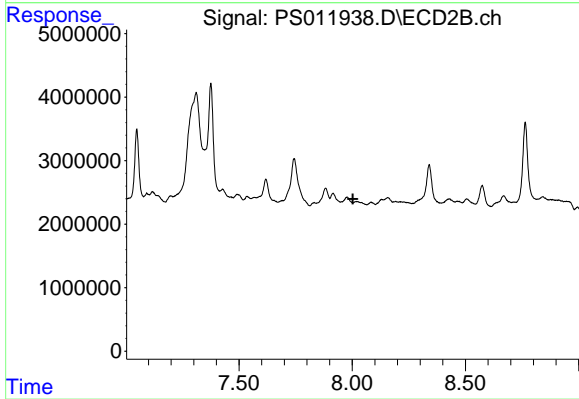
#8 DICHLORPROP

R.T.: 7.743 min
 Delta R.T.: 0.034 min
 Response: 17872511
 Conc: 31.65 ng/ml



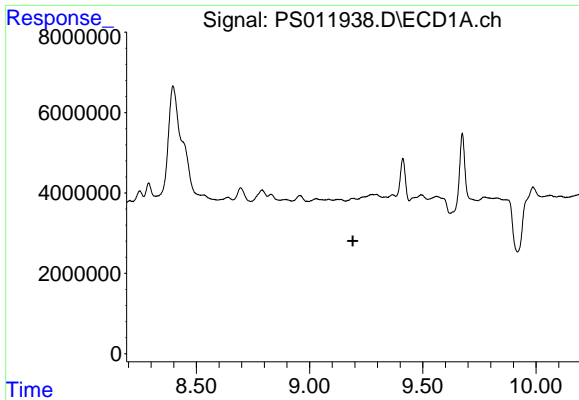
#9 2,4-D

R.T.: 8.289 min
 Delta R.T.: -0.043 min
 Response: 10112180
 Conc: 8.96 ng/ml



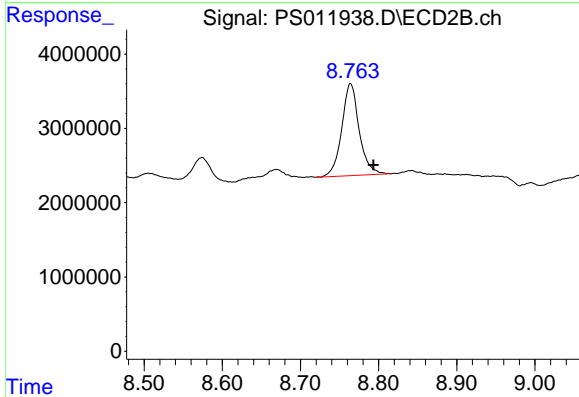
#9 2,4-D

R.T.: 0.000 min
 Exp R.T.: 8.003 min
 Response: 0
 Conc: N.D.

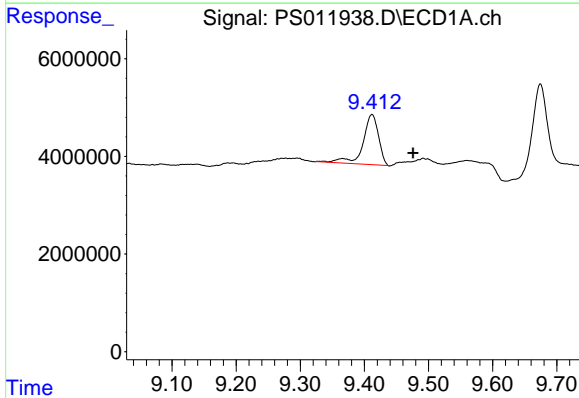


#11 2,4,5-TP (SILVEX)
 R.T.: 0.000 min
 Exp R.T.: 9.191 min
 Response: 0
 Conc: N.D.

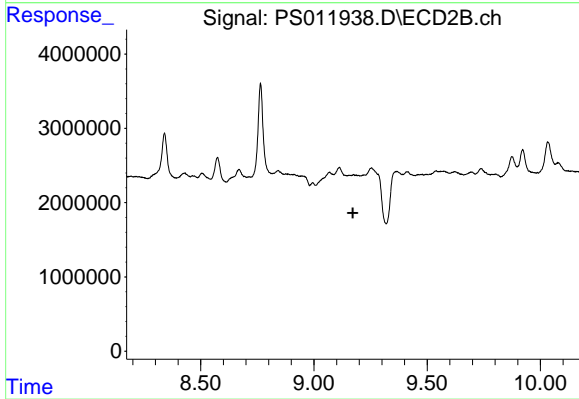
Instrument :
 ECD_S
 ClientSampleId :



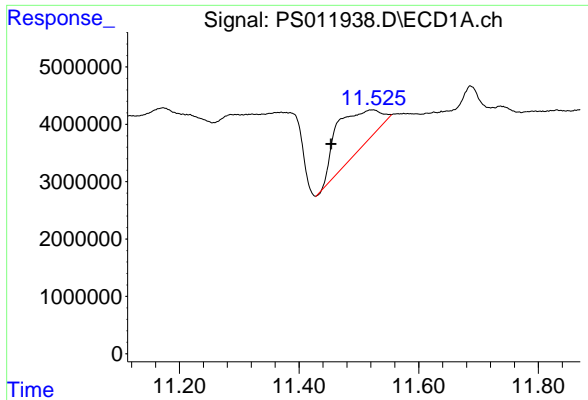
#11 2,4,5-TP (SILVEX)
 R.T.: 8.764 min
 Delta R.T.: -0.029 min
 Response: 19195179
 Conc: 6.57 ng/ml



#12 2,4,5-T
 R.T.: 9.412 min
 Delta R.T.: -0.064 min
 Response: 17298540
 Conc: 2.92 ng/ml



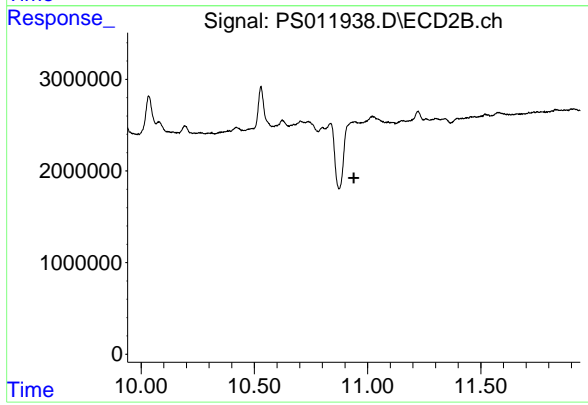
#12 2,4,5-T
 R.T.: 0.000 min
 Exp R.T.: 9.172 min
 Response: 0
 Conc: N.D.



#16 DCPA

R.T.: 11.522 min
Delta R.T.: 0.069 min
Response: 34691212
Conc: 4.56 ng/ml

Instrument :
ECD_S
ClientSampleId :



#16 DCPA

R.T.: 0.000 min
Exp R.T. : 10.940 min
Response: 0
Conc: N.D.