

Data Path : Z:\pestpcbsrv\HPCHEM1\ECD_S\Data\PS082620\
 Data File : PS011943.D
 Signal(s) : Signal #1: ECD1A.ch Signal #2: ECD2B.ch
 Acq On : 26 Aug 2020 20:13
 Operator : DD\AJ
 Sample : I.BLK
 Misc :
 ALS Vial : 2 Sample Multiplier: 1

Instrument :
 ECD_S
 ClientSampleId :
 I.BLK

Integration File signal 1: autoint1.e
 Integration File signal 2: autoint2.e
 Quant Time: Aug 27 02:11:21 2020
 Quant Method : Z:\pestpcbsrv\HPCHEM1\ECD_S\Method\PS081120.M
 Quant Title : 8080.M
 QLast Update : Tue Aug 11 15:43:16 2020
 Response via : Initial Calibration
 Integrator: ChemStation

Volume Inj. : 2 µl
 Signal #1 Phase : Rtx-CLPesticides Signal #2 Phase: Rtx-CLPesticides2
 Signal #1 Info : 30M x 0.32mm x0.5 Signal #2 Info : 30M x 0.32mm x 0.25µm

Compound	RT#1	RT#2	Resp#1	Resp#2	ng/ml	ng/ml
----------	------	------	--------	--------	-------	-------

 System Monitoring Compounds

4) S	2,4-DCAA	7.219	6.916	478.6E6	292.4E6	438.773	546.748
------	----------	-------	-------	---------	---------	---------	---------

Target Compounds

1) T	Dalapon	3.096	0.000	24709267	0	19.836	N.D. #
9) T	2,4-D	8.400	0.000	131.0E6	0	116.057	N.D. #

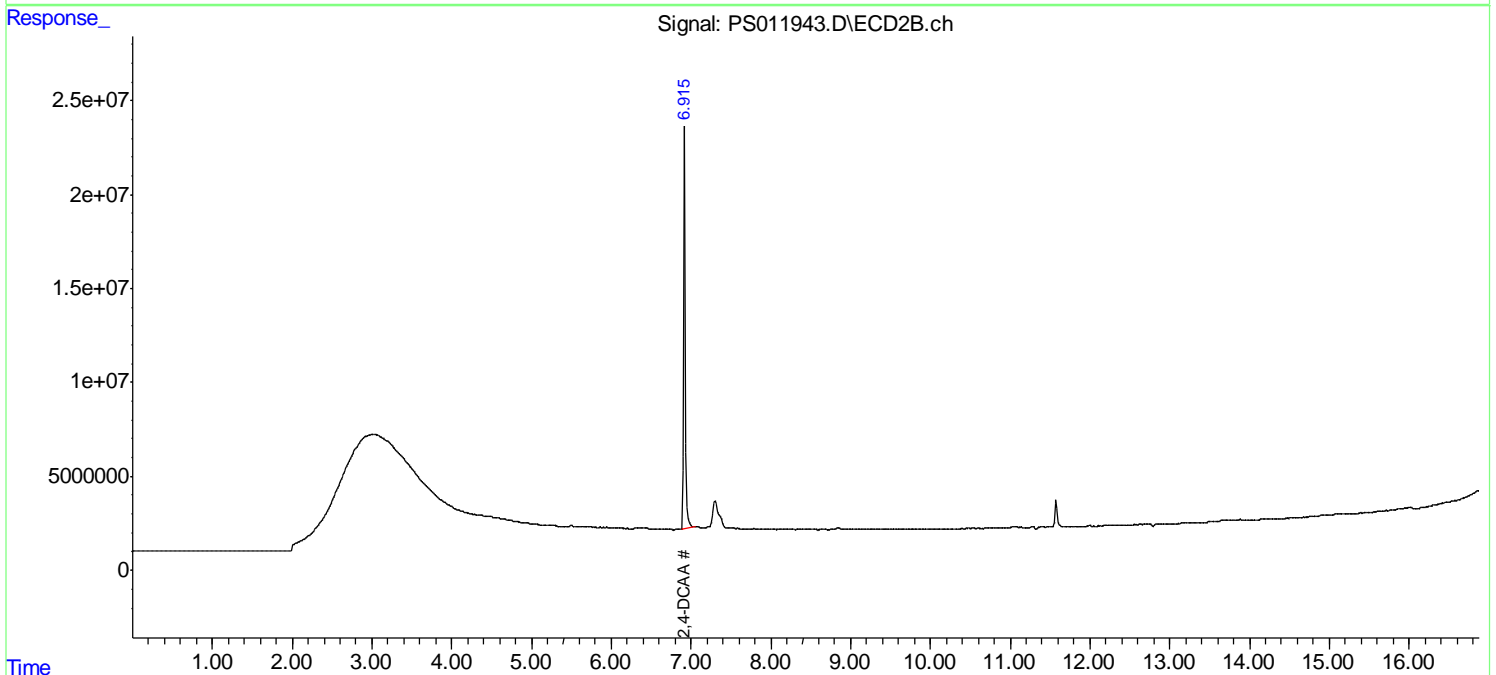
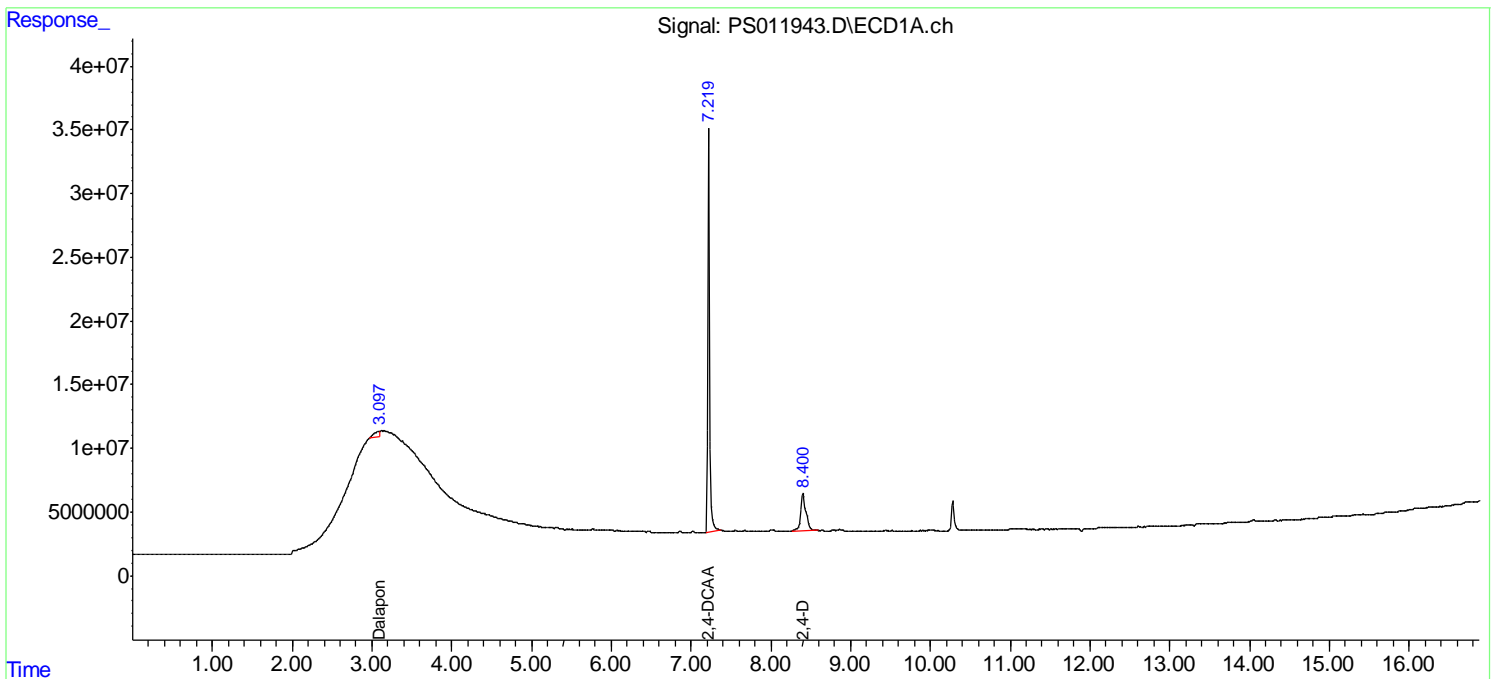
(f)=RT Delta > 1/2 Window (#)=Amounts differ by > 25% (m)=manual int.

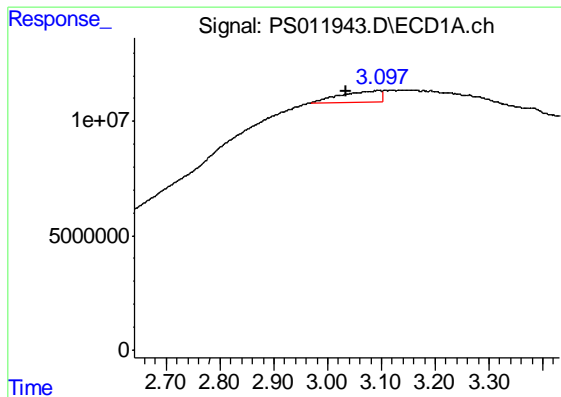
Data Path : Z:\pestpcbsrv\HPCHEM1\ECD_S\Data\PS082620\
 Data File : PS011943.D
 Signal(s) : Signal #1: ECD1A.ch Signal #2: ECD2B.ch
 Acq On : 26 Aug 2020 20:13
 Operator : DD\AJ
 Sample : I.BLK
 Misc :
 ALS Vial : 2 Sample Multiplier: 1

Instrument :
 ECD_S
 ClientSampleId :
 I.BLK

Integration File signal 1: autoint1.e
 Integration File signal 2: autoint2.e
 Quant Time: Aug 27 02:11:21 2020
 Quant Method : Z:\pestpcbsrv\HPCHEM1\ECD_S\Method\PS081120.M
 Quant Title : 8080.M
 QLast Update : Tue Aug 11 15:43:16 2020
 Response via : Initial Calibration
 Integrator: ChemStation

Volume Inj. : 2 µl
 Signal #1 Phase : Rtx-CLPesticides Signal #2 Phase: Rtx-CLPesticides2
 Signal #1 Info : 30M x 0.32mm x0.5 Signal #2 Info : 30M x 0.32mm x 0.25µm

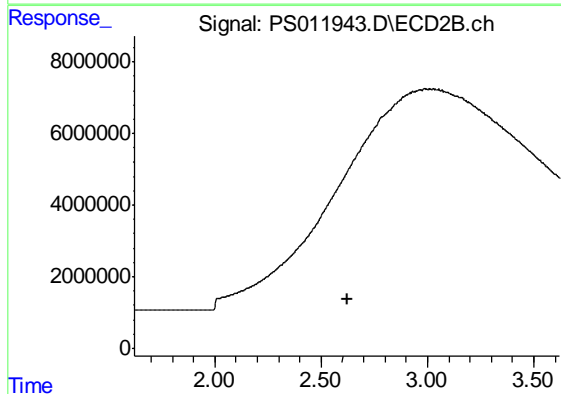




#1 Dalapon

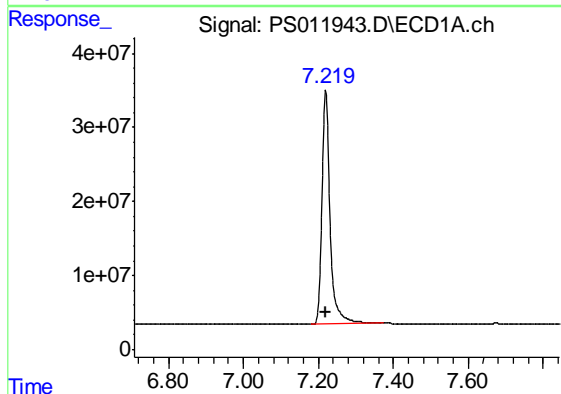
R.T.: 3.096 min
 Delta R.T.: 0.061 min
 Response: 24709267
 Conc: 19.84 ng/ml

Instrument :
 ECD_S
 ClientSampled :
 I.BLK



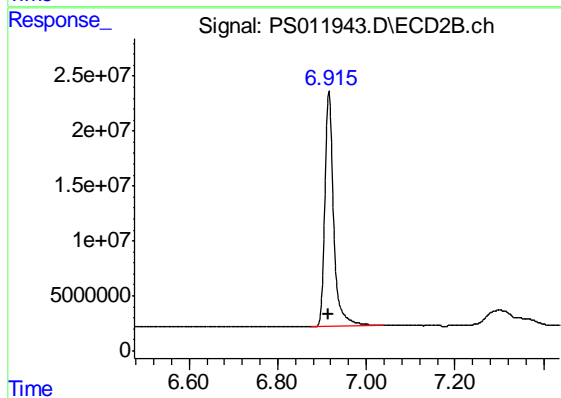
#1 Dalapon

R.T.: 0.000 min
 Exp R.T. : 2.621 min
 Response: 0
 Conc: N.D.



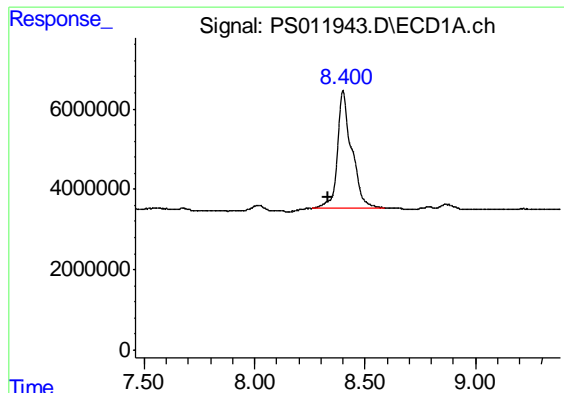
#4 2,4-DCAA

R.T.: 7.219 min
 Delta R.T.: 0.000 min
 Response: 478599894
 Conc: 438.77 ng/ml



#4 2,4-DCAA

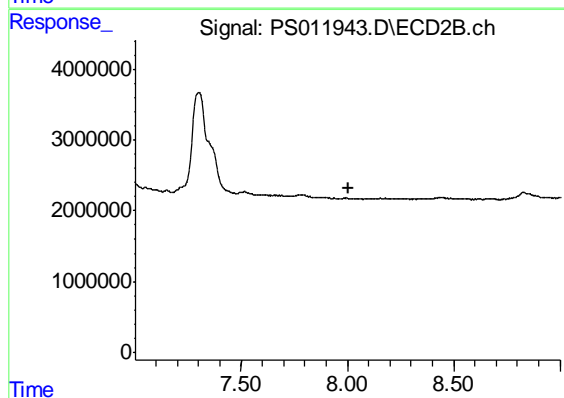
R.T.: 6.916 min
 Delta R.T.: 0.000 min
 Response: 292393454
 Conc: 546.75 ng/ml



#9 2,4-D

R.T.: 8.400 min
Delta R.T.: 0.068 min
Response: 131039479
Conc: 116.06 ng/ml

Instrument :
ECD_S
ClientSampleId :
I.BLK



#9 2,4-D

R.T.: 0.000 min
Exp R.T. : 8.003 min
Response: 0
Conc: N.D.