

Data Path : Z:\pestpcbsrv\HPCHEM1\ECD_S\Data\PS082620\
 Data File : PS011954.D
 Signal(s) : Signal #1: ECD1A.ch Signal #2: ECD2B.ch
 Acq On : 27 Aug 2020 00:26
 Operator : DD\AJ
 Sample : HSTDCCC750
 Misc :
 ALS Vial : 3 Sample Multiplier: 1

Instrument :
 ECD_S
 ClientSampleId :
 HSTDCCC750

Integration File signal 1: autoint1.e
 Integration File signal 2: autoint2.e
 Quant Time: Aug 27 02:14:39 2020
 Quant Method : Z:\pestpcbsrv\HPCHEM1\ECD_S\Method\PS081120.M
 Quant Title : 8080.M
 QLast Update : Tue Aug 11 15:43:16 2020
 Response via : Initial Calibration
 Integrator: ChemStation

Volume Inj. : 2 µl
 Signal #1 Phase : Rtx-CLPesticides Signal #2 Phase: Rtx-CLPesticides2
 Signal #1 Info : 30M x 0.32mm x0.5 Signal #2 Info : 30M x 0.32mm x 0.25µm

	Compound	RT#1	RT#2	Resp#1	Resp#2	ng/ml	ng/ml

System Monitoring Compounds							
4) S	2,4-DCAA	7.218	6.914	811.0E6	426.7E6	743.479	797.881
Target Compounds							
1) T	Dalapon	3.035	2.625	864.5E6	435.7E6	694.023	576.484
2) T	3,5-DICHL...	6.433	6.066	1040.1E6	601.6E6	717.458	731.292
3) T	4-Nitroph...	7.049	6.522	358.3E6	243.5E6	608.198	667.709
5) T	DICAMBA	7.408	7.082	3079.3E6	1654.6E6	751.796	765.843
6) T	MCPP	7.578	7.179	240.8E6	137.1E6	75.377	77.588
7) T	MCPA	7.727	7.395	336.3E6	206.9E6	73.933	75.514
8) T	DICHLORPROP	8.100	7.707	734.1E6	429.5E6	730.705	760.745
9) T	2,4-D	8.330	8.002	794.9E6	552.8E6	704.000	752.420
10) T	Pentachlo...	8.639	8.431	10642.2E6	5188.0E6	739.988	763.529
11) T	2,4,5-TP ...	9.189	8.792	4258.8E6	2244.9E6	732.416	767.838
12) T	2,4,5-T	9.475	9.171	4235.6E6	2228.6E6	714.777	752.896
13) T	2,4-DB	10.028	9.678	532.3E6	312.2E6	669.954	746.430
14) T	DINOSEB	11.186	10.009	3341.9E6	1630.0E6	711.997	766.727
15) T	Picloram	11.012	10.997	4445.4E6	2876.7E6	568.785	634.697
16) T	DCPA	11.450	10.938	5303.4E6	2842.1E6	697.502	772.947

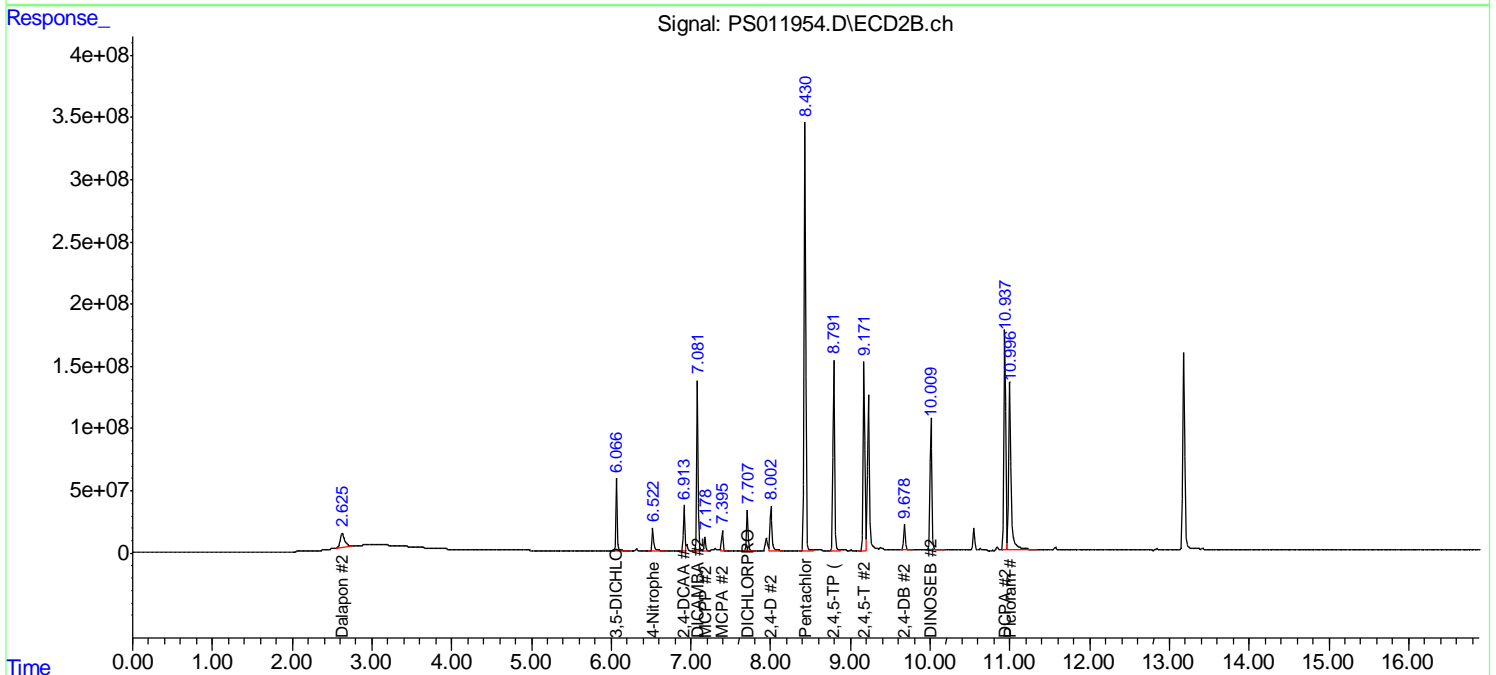
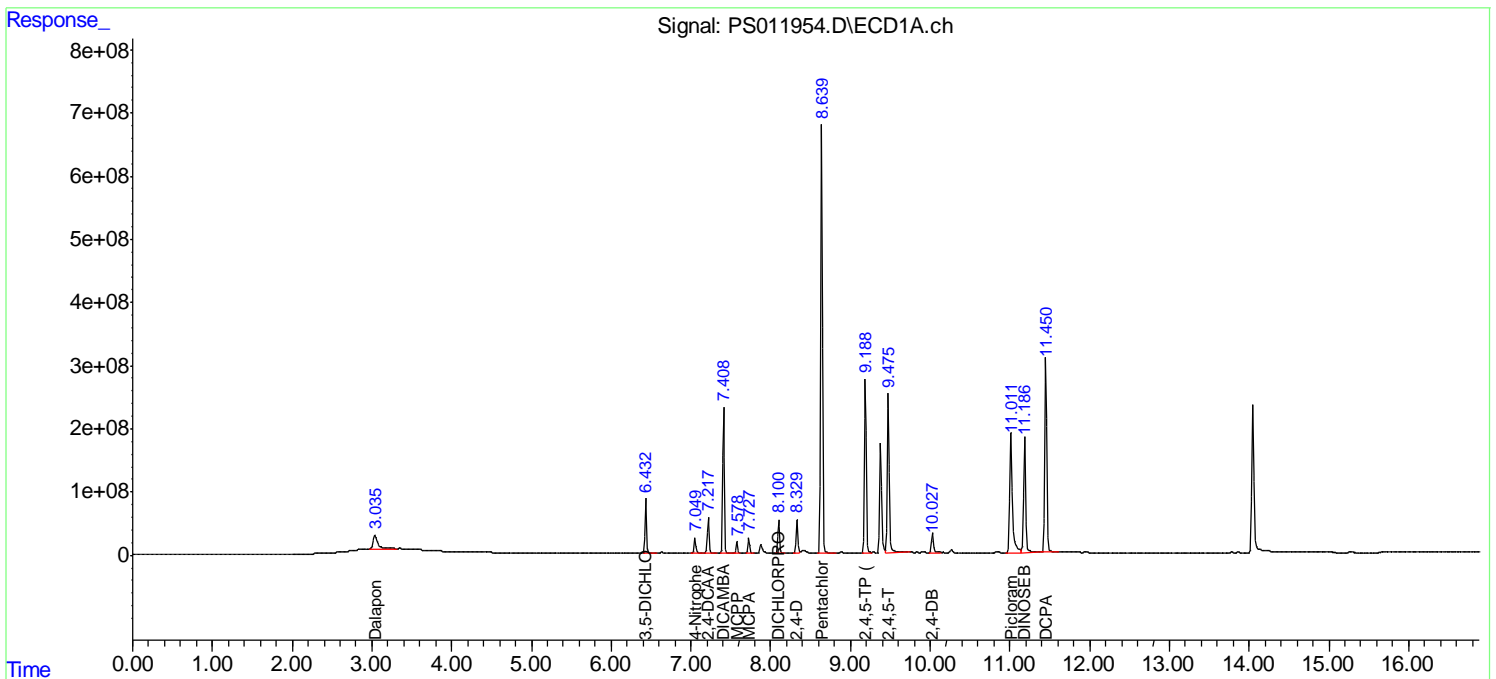
(f)=RT Delta > 1/2 Window (#)=Amounts differ by > 25% (m)=manual int.

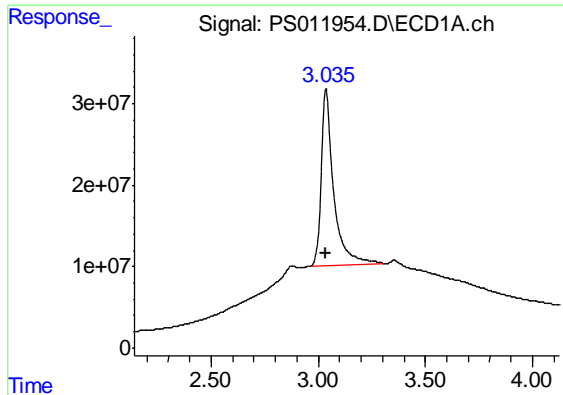
Data Path : Z:\pestpcbsrv\HPCHEM1\ECD_S\Data\PS082620\
 Data File : PS011954.D
 Signal(s) : Signal #1: ECD1A.ch Signal #2: ECD2B.ch
 Acq On : 27 Aug 2020 00:26
 Operator : DD\AJ
 Sample : HSTDCCC750
 Misc :
 ALS Vial : 3 Sample Multiplier: 1

Instrument :
 ECD_S
 ClientSampleId :
 HSTDCCC750

Integration File signal 1: autoint1.e
 Integration File signal 2: autoint2.e
 Quant Time: Aug 27 02:14:39 2020
 Quant Method : Z:\pestpcbsrv\HPCHEM1\ECD_S\Method\PS081120.M
 Quant Title : 8080.M
 QLast Update : Tue Aug 11 15:43:16 2020
 Response via : Initial Calibration
 Integrator: ChemStation

Volume Inj. : 2 µl
 Signal #1 Phase : Rtx-CLPesticides Signal #2 Phase: Rtx-CLPesticides2
 Signal #1 Info : 30M x 0.32mm x0.5 Signal #2 Info : 30M x 0.32mm x 0.25µm

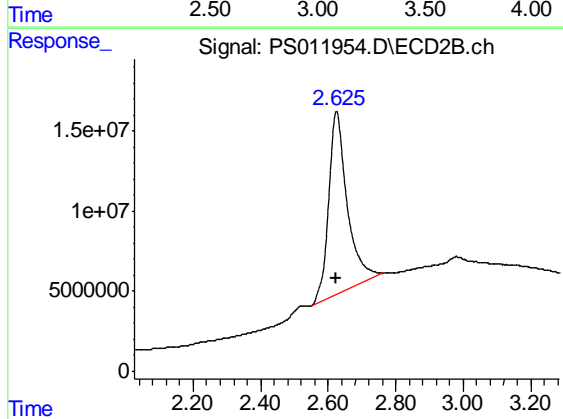




#1 Dalapon

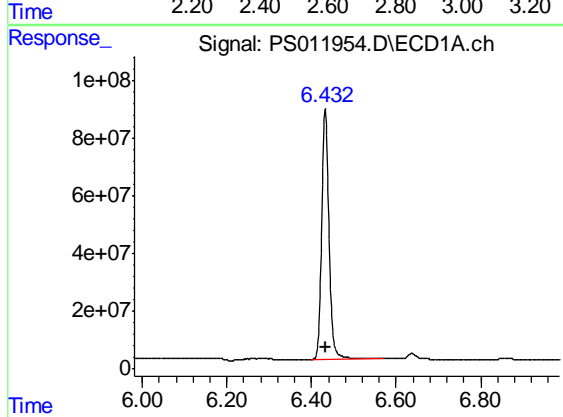
R.T.: 3.035 min
Delta R.T.: 0.000 min
Response: 864514242
Conc: 694.02 ng/ml

Instrument :
ECD_S
ClientSampleId :
HSTDCCC750



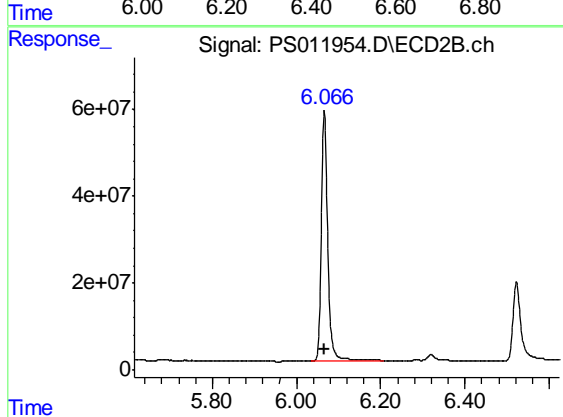
#1 Dalapon

R.T.: 2.625 min
Delta R.T.: 0.003 min
Response: 435734625
Conc: 576.48 ng/ml



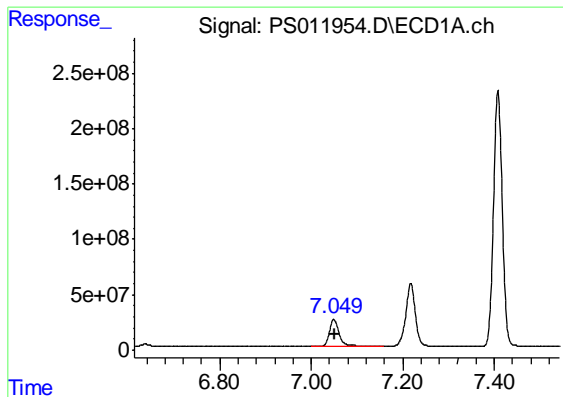
#2 3,5-DICHLOROBENZOIC ACID

R.T.: 6.433 min
Delta R.T.: -0.001 min
Response: 1040126694
Conc: 717.46 ng/ml



#2 3,5-DICHLOROBENZOIC ACID

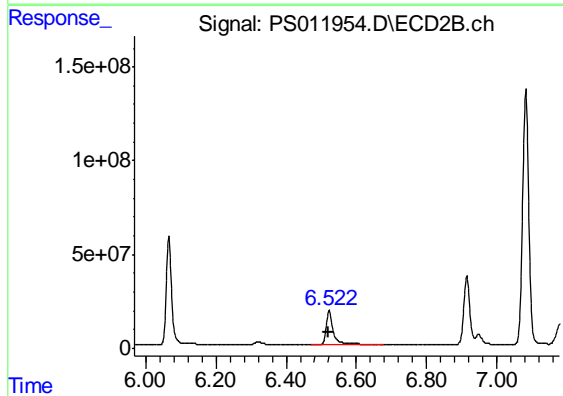
R.T.: 6.066 min
Delta R.T.: 0.000 min
Response: 601575713
Conc: 731.29 ng/ml



#3 4-Nitrophenol

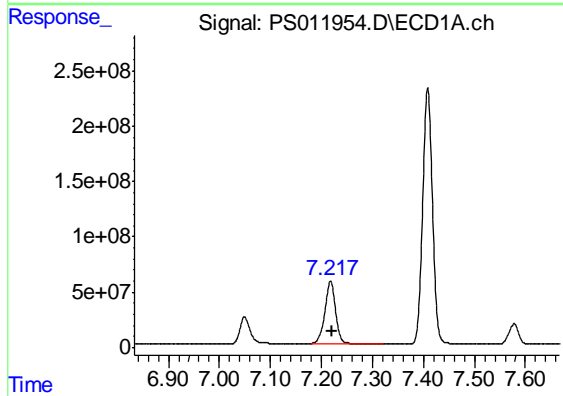
R.T.: 7.049 min
 Delta R.T.: -0.001 min
 Response: 358254404
 Conc: 608.20 ng/ml

Instrument :
 ECD_S
 ClientSampleId :
 HSTDCCC750



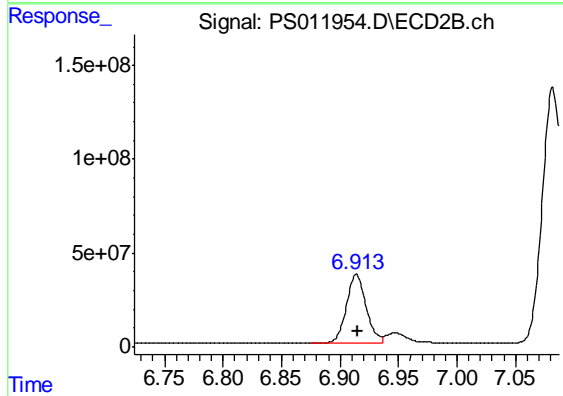
#3 4-Nitrophenol

R.T.: 6.522 min
 Delta R.T.: 0.000 min
 Response: 243453335
 Conc: 667.71 ng/ml



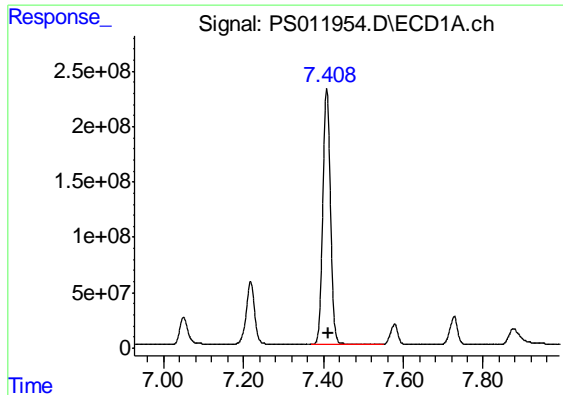
#4 2,4-DCAA

R.T.: 7.218 min
 Delta R.T.: -0.002 min
 Response: 810963268
 Conc: 743.48 ng/ml



#4 2,4-DCAA

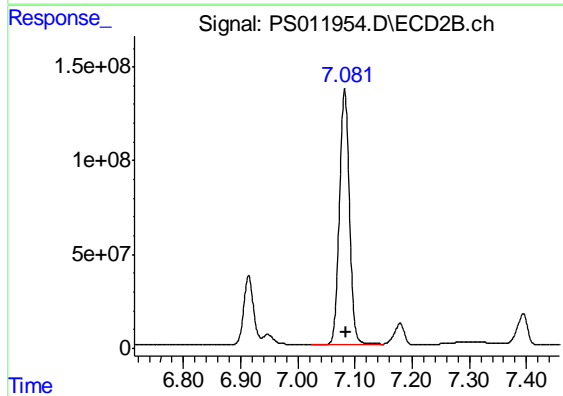
R.T.: 6.914 min
 Delta R.T.: -0.001 min
 Response: 426696165
 Conc: 797.88 ng/ml



#5 DICAMBA

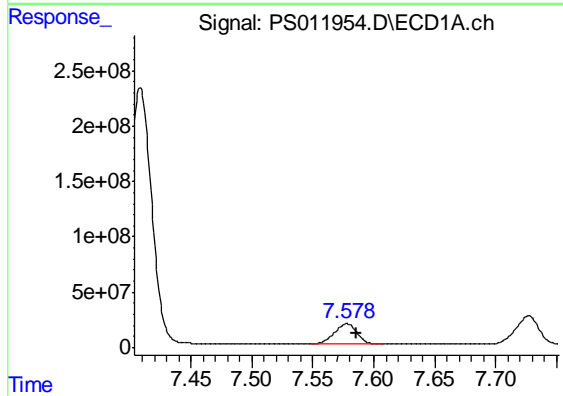
R.T.: 7.408 min
Delta R.T.: -0.003 min
Response: 3079340684
Conc: 751.80 ng/ml

Instrument :
ECD_S
ClientSampleId :
HSTDCCC750



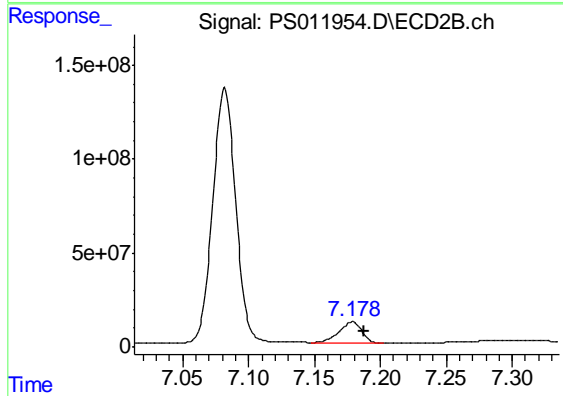
#5 DICAMBA

R.T.: 7.082 min
Delta R.T.: -0.002 min
Response: 1654608268
Conc: 765.84 ng/ml



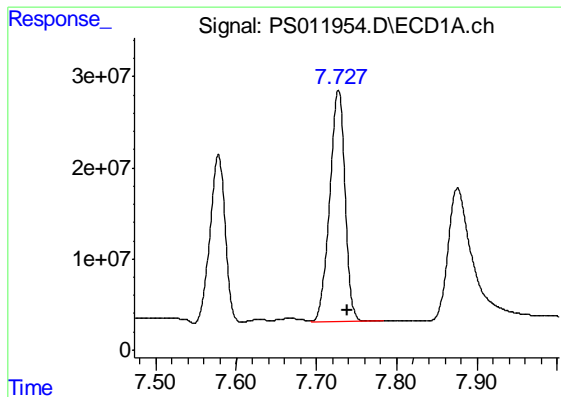
#6 MCPP

R.T.: 7.578 min
Delta R.T.: -0.008 min
Response: 240835100
Conc: 75.38 ug/ml



#6 MCPP

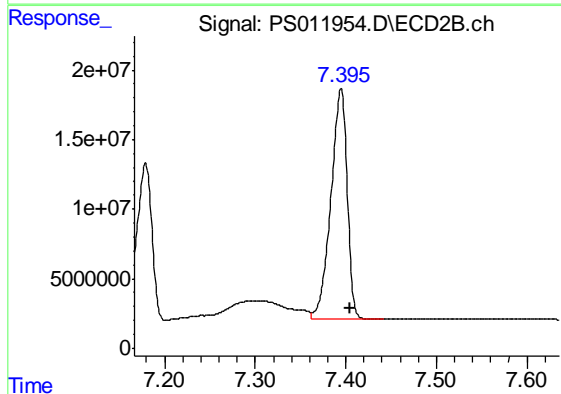
R.T.: 7.179 min
Delta R.T.: -0.009 min
Response: 137131672
Conc: 77.59 ug/ml



#7 MCPA

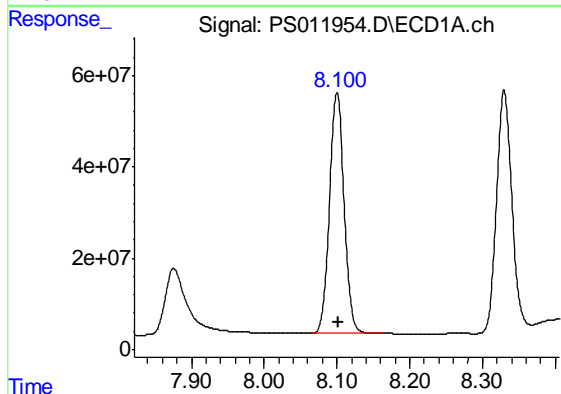
R.T.: 7.727 min
 Delta R.T.: -0.011 min
 Response: 336281488
 Conc: 73.93 ug/ml

Instrument :
 ECD_S
 ClientSampleId :
 HSTDCCC750



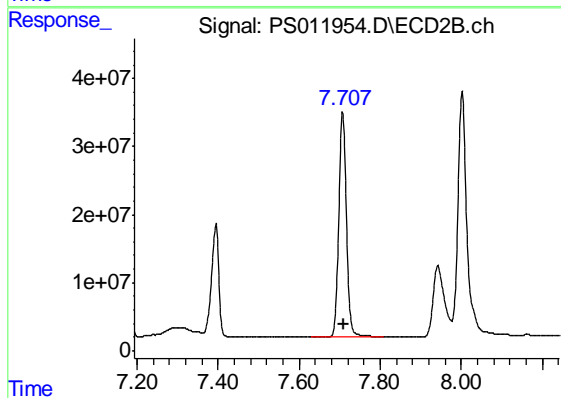
#7 MCPA

R.T.: 7.395 min
 Delta R.T.: -0.010 min
 Response: 206917918
 Conc: 75.51 ug/ml



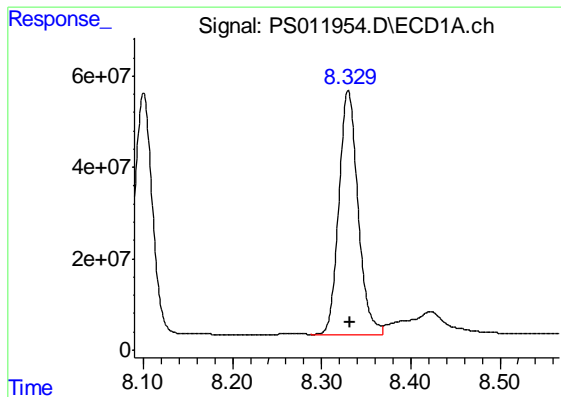
#8 DICHLORPROP

R.T.: 8.100 min
 Delta R.T.: -0.002 min
 Response: 734122817
 Conc: 730.71 ng/ml



#8 DICHLORPROP

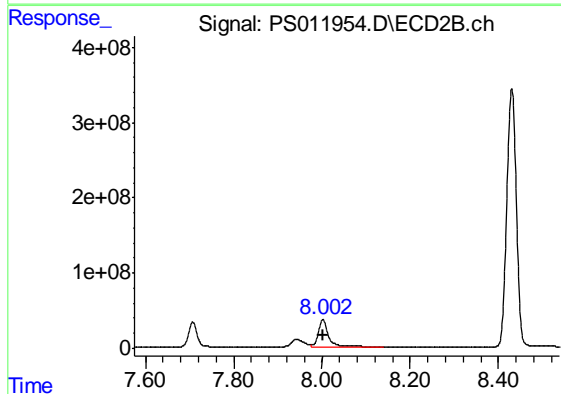
R.T.: 7.707 min
 Delta R.T.: -0.002 min
 Response: 429543852
 Conc: 760.74 ng/ml



#9 2,4-D

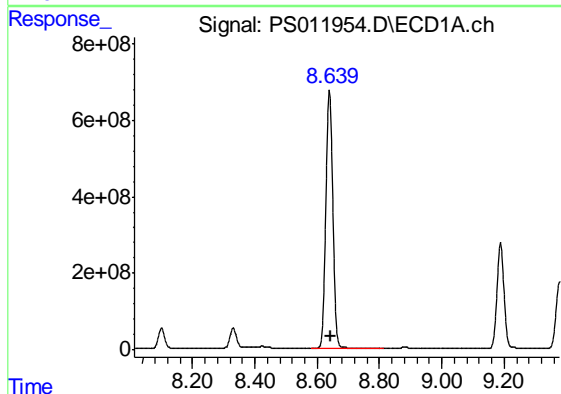
R.T.: 8.330 min
 Delta R.T.: -0.002 min
 Response: 794881261
 Conc: 704.00 ng/ml

Instrument :
 ECD_S
 ClientSampleId :
 HSTDCCC750



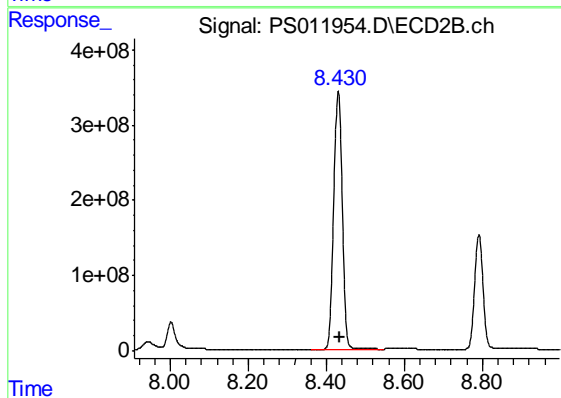
#9 2,4-D

R.T.: 8.002 min
 Delta R.T.: 0.000 min
 Response: 552775566
 Conc: 752.42 ng/ml



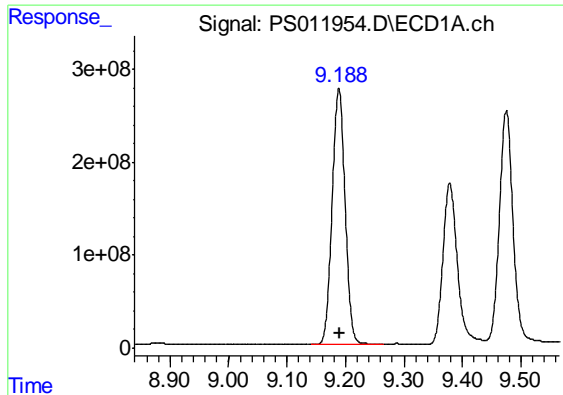
#10 Pentachlorophenol

R.T.: 8.639 min
 Delta R.T.: -0.004 min
 Response: 10642159662
 Conc: 739.99 ng/ml



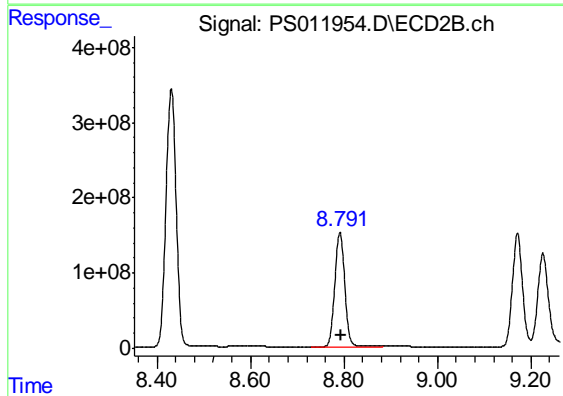
#10 Pentachlorophenol

R.T.: 8.431 min
 Delta R.T.: -0.004 min
 Response: 5188005649
 Conc: 763.53 ng/ml

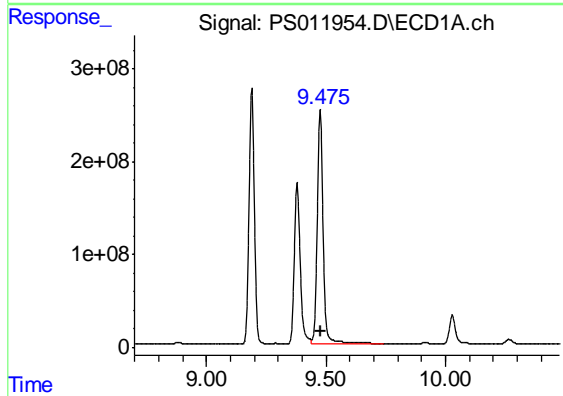


#11 2,4,5-TP (SILVEX)
 R.T.: 9.189 min
 Delta R.T.: -0.003 min
 Response: 4258845968
 Conc: 732.42 ng/ml

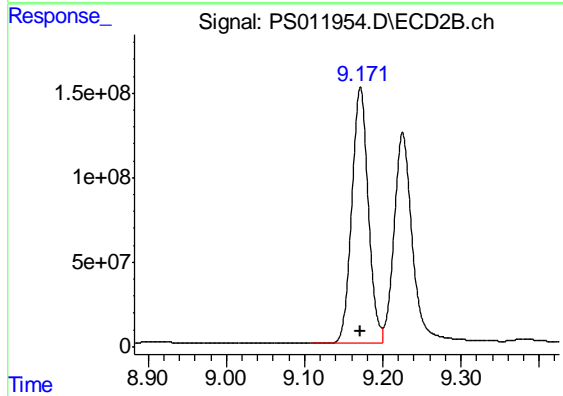
Instrument :
 ECD_S
 ClientSampleId :
 HSTDCCC750



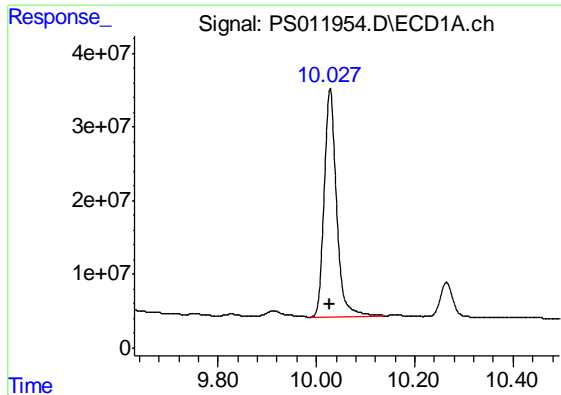
#11 2,4,5-TP (SILVEX)
 R.T.: 8.792 min
 Delta R.T.: -0.002 min
 Response: 2244888001
 Conc: 767.84 ng/ml



#12 2,4,5-T
 R.T.: 9.475 min
 Delta R.T.: 0.000 min
 Response: 4235642318
 Conc: 714.78 ng/ml



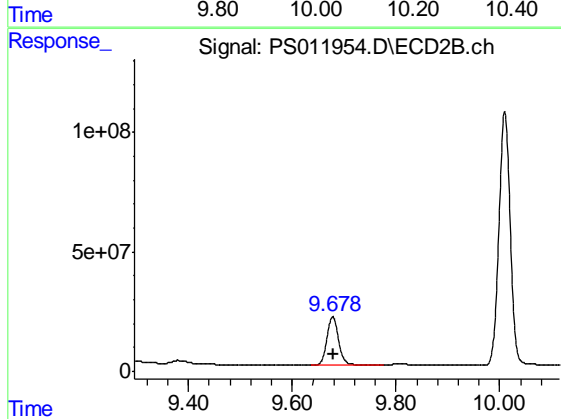
#12 2,4,5-T
 R.T.: 9.171 min
 Delta R.T.: 0.000 min
 Response: 2228634316
 Conc: 752.90 ng/ml



#13 2,4-DB

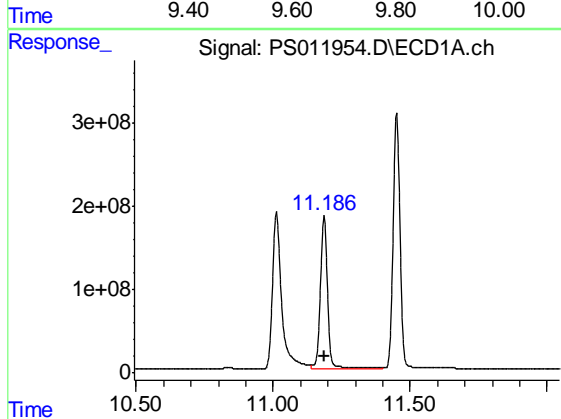
R.T.: 10.028 min
 Delta R.T.: 0.000 min
 Response: 532330360
 Conc: 669.95 ng/ml

Instrument :
 ECD_S
 ClientSampleId :
 HSTDCCC750



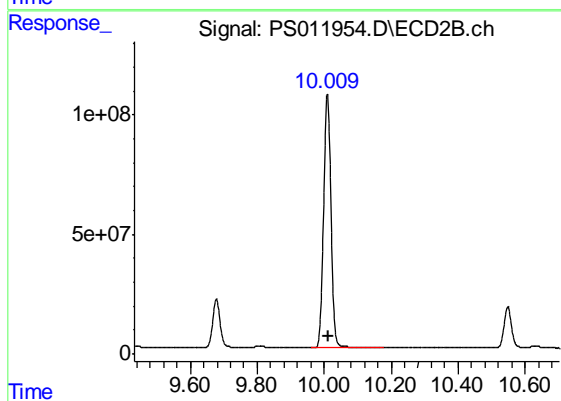
#13 2,4-DB

R.T.: 9.678 min
 Delta R.T.: 0.000 min
 Response: 312173404
 Conc: 746.43 ng/ml



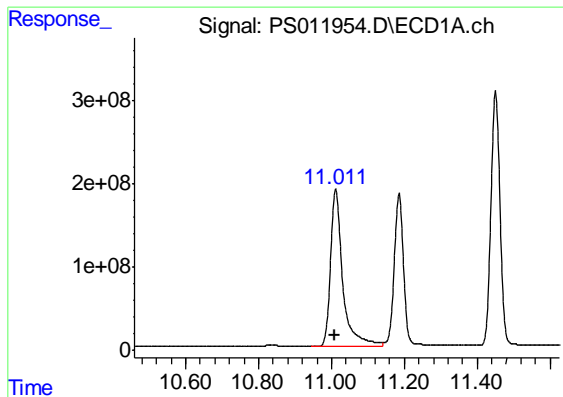
#14 DINOSEB

R.T.: 11.186 min
 Delta R.T.: -0.003 min
 Response: 3341882860
 Conc: 712.00 ng/ml



#14 DINOSEB

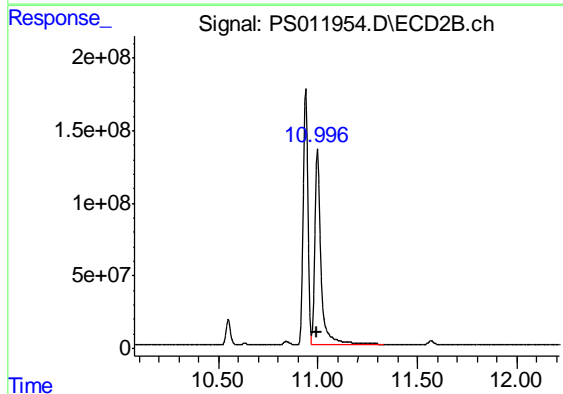
R.T.: 10.009 min
 Delta R.T.: -0.002 min
 Response: 1630003099
 Conc: 766.73 ng/ml



#15 Picloram

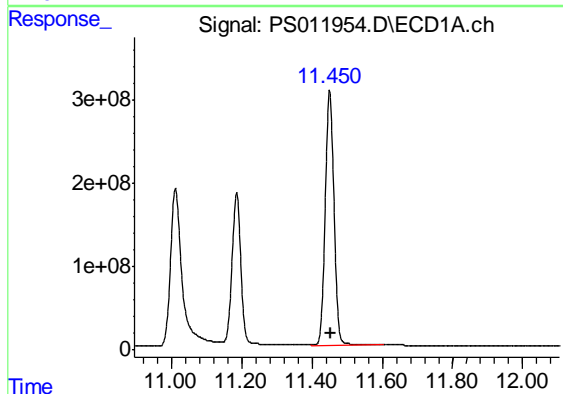
R.T.: 11.012 min
 Delta R.T.: 0.002 min
 Response: 4445411270
 Conc: 568.79 ng/ml

Instrument :
 ECD_S
 ClientSampleId :
 HSTDCCC750



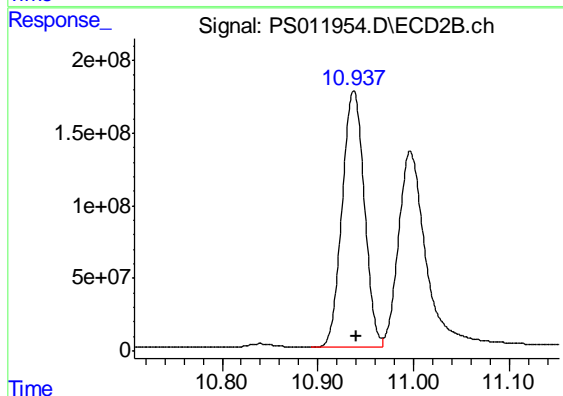
#15 Picloram

R.T.: 10.997 min
 Delta R.T.: 0.001 min
 Response: 2876731177
 Conc: 634.70 ng/ml



#16 DCPA

R.T.: 11.450 min
 Delta R.T.: -0.003 min
 Response: 5303415199
 Conc: 697.50 ng/ml



#16 DCPA

R.T.: 10.938 min
 Delta R.T.: -0.002 min
 Response: 2842064837
 Conc: 772.95 ng/ml