

Data Path : Z:\pestpcbsrv\HPCHEM1\ECD_S\Data\PS082719\
 Data File : PS006350.D
 Signal(s) : Signal #1: ECD1A.ch Signal #2: ECD2B.ch
 Acq On : 27 Aug 2019 08:59
 Operator : SM\AJ
 Sample : I.BLK
 Misc :
 ALS Vial : 2 Sample Multiplier: 1

Instrument :
 ECD_S
 ClientSampleId :
 I.BLK

Integration File signal 1: autoint1.e
 Integration File signal 2: autoint2.e
 Quant Time: Aug 28 04:46:49 2019
 Quant Method : Z:\pestpcbsrv\HPCHEM1\ECD_S\Method\PS081419.M
 Quant Title : 8080.M
 QLast Update : Wed Aug 14 15:09:52 2019
 Response via : Initial Calibration
 Integrator: ChemStation

Volume Inj. : 2 µl
 Signal #1 Phase : Rtx-CLPesticides Signal #2 Phase: Rtx-CLPesticides2
 Signal #1 Info : 30M x 0.32mm x0.5 Signal #2 Info : 30M x 0.32mm x 0.25µm

Compound	RT#1	RT#2	Resp#1	Resp#2	ng/ml	ng/ml

System Monitoring Compounds						
4) S 2,4-DCAA	5.513	5.236	370.9E6	211.2E6	429.691	429.298
Target Compounds						
9) T 2,4-D	6.571	0.000	103.9E6	0	127.557	N.D. #

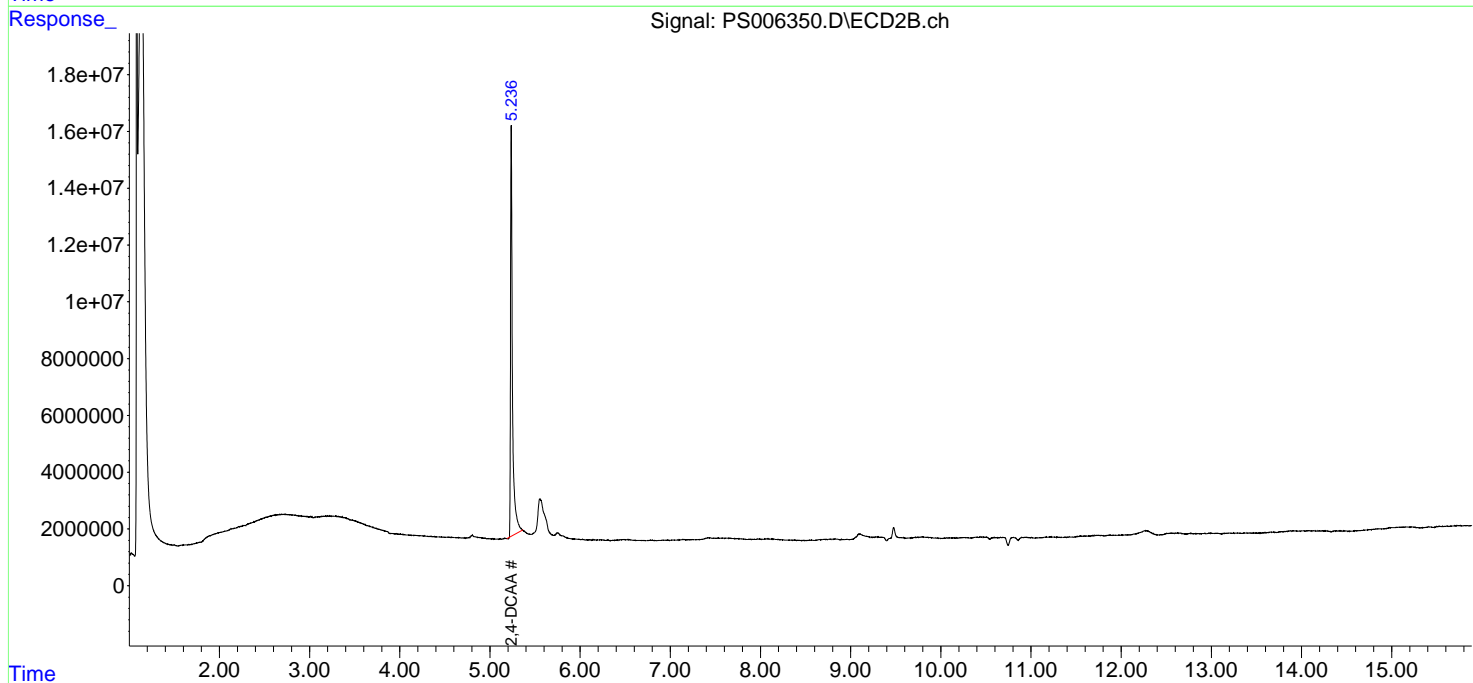
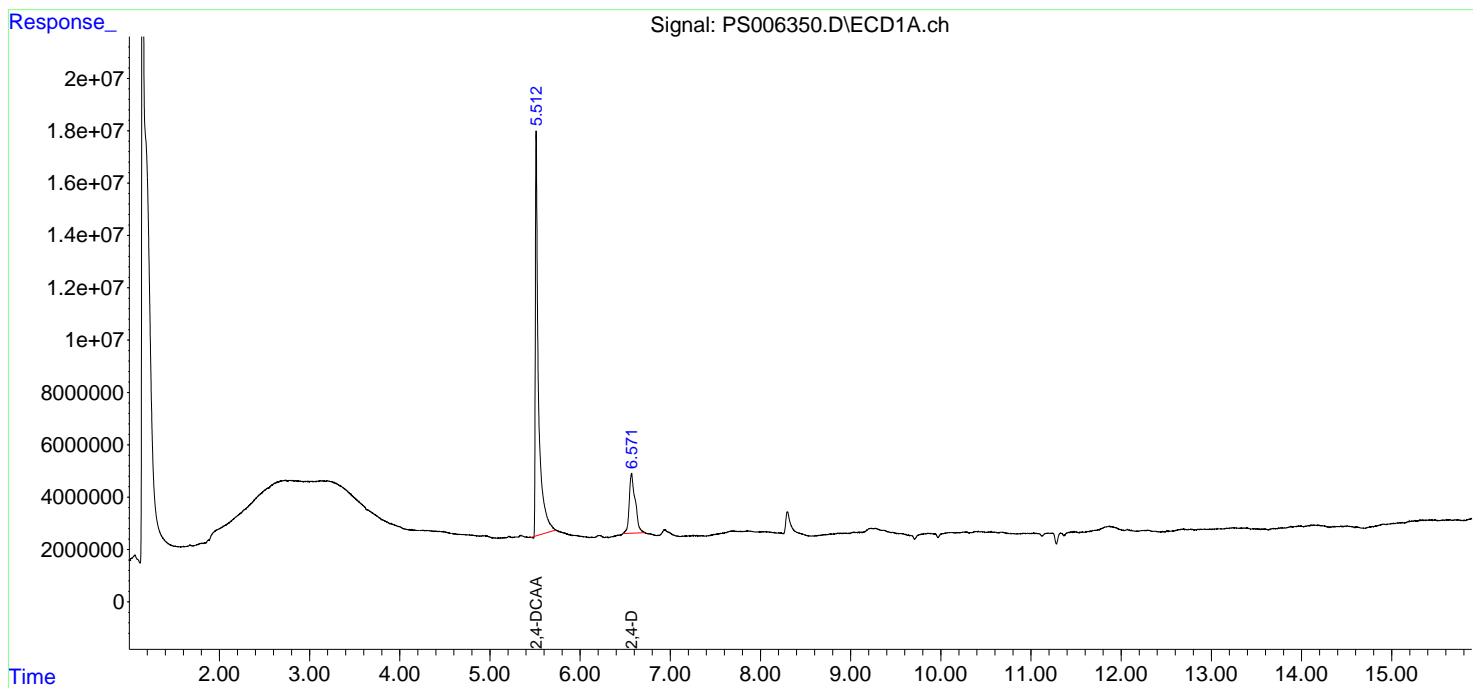
(f)=RT Delta > 1/2 Window (#)=Amounts differ by > 25% (m)=manual int.

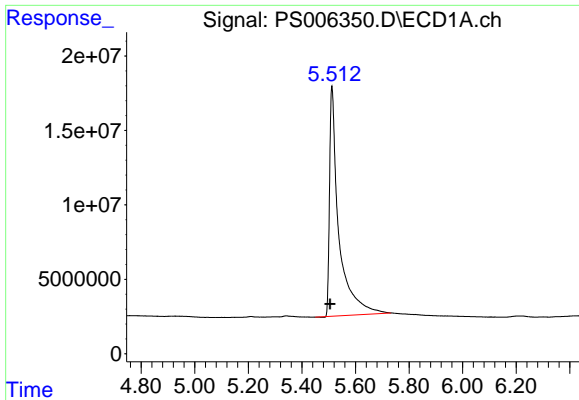
Data Path : Z:\pestpcbsrv\HPCHEM1\ECD_S\Data\PS082719\
 Data File : PS006350.D
 Signal(s) : Signal #1: ECD1A.ch Signal #2: ECD2B.ch
 Acq On : 27 Aug 2019 08:59
 Operator : SM\AJ
 Sample : I.BLK
 Misc :
 ALS Vial : 2 Sample Multiplier: 1

Instrument :
 ECD_S
 ClientSampleId :
 I.BLK

Integration File signal 1: autoint1.e
 Integration File signal 2: autoint2.e
 Quant Time: Aug 28 04:46:49 2019
 Quant Method : Z:\pestpcbsrv\HPCHEM1\ECD_S\Method\PS081419.M
 Quant Title : 8080.M
 QLast Update : Wed Aug 14 15:09:52 2019
 Response via : Initial Calibration
 Integrator: ChemStation

Volume Inj. : 2 µl
 Signal #1 Phase : Rtx-CLPesticides Signal #2 Phase: Rtx-CLPesticides2
 Signal #1 Info : 30M x 0.32mm x 0.5 Signal #2 Info : 30M x 0.32mm x 0.25µm

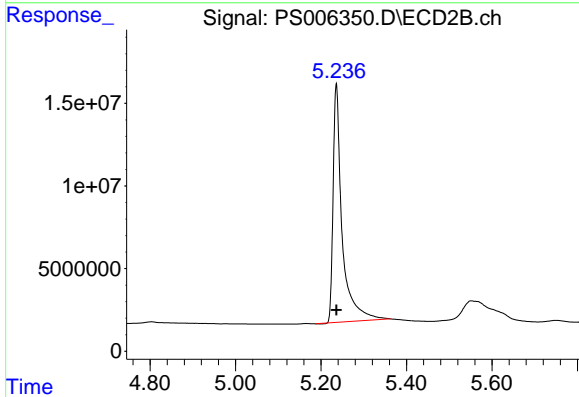




#4 2,4-DCAA

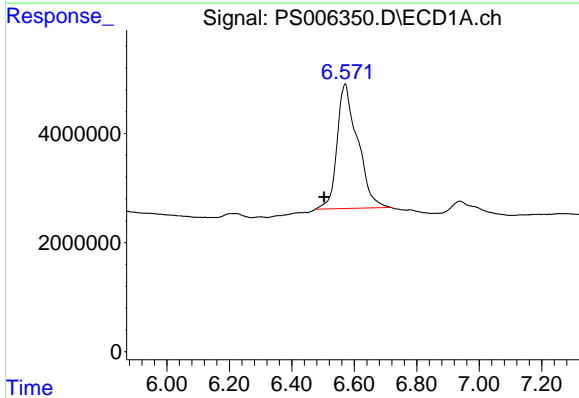
R.T.: 5.513 min
 Delta R.T.: 0.007 min
 Response: 370909574
 Conc: 429.69 ng/ml

Instrument :
 ECD_S
 ClientSampled :
 I.BLK



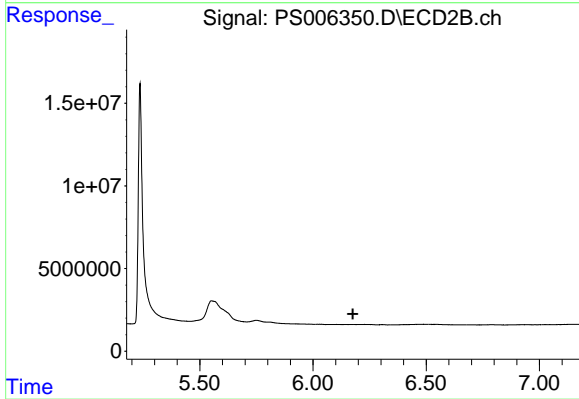
#4 2,4-DCAA

R.T.: 5.236 min
 Delta R.T.: 0.000 min
 Response: 211151182
 Conc: 429.30 ng/ml



#9 2,4-D

R.T.: 6.571 min
 Delta R.T.: 0.068 min
 Response: 103931407
 Conc: 127.56 ng/ml



#9 2,4-D

R.T.: 0.000 min
 Exp R.T. : 6.176 min
 Response: 0
 Conc: N.D.