

Data Path : Z:\pestpcbsrv\HPCHEM1\ECD_S\Data\PS082823\
 Data File : PS024189.D
 Signal(s) : Signal #1: ECD1A.ch Signal #2: ECD2B.ch
 Acq On : 28 Aug 2023 22:45
 Operator : AR\AJ
 Sample : I.BLK
 Misc :
 ALS Vial : 2 Sample Multiplier: 1

Instrument :
 ECD_S
 ClientSampleId :
 I.BLK

Integration File signal 1: autoint1.e
 Integration File signal 2: autoint2.e
 Quant Time: Aug 29 02:21:41 2023
 Quant Method : Z:\pestpcbsrv\HPCHEM1\ECD_S\Method\PS082823.M
 Quant Title : 8080.M
 QLast Update : Mon Aug 28 16:48:10 2023
 Response via : Initial Calibration
 Integrator: ChemStation

Volume Inj. : 2 µl
 Signal #1 Phase : Rtx-CLPesticides Signal #2 Phase: Rtx-CLPesticides2
 Signal #1 Info : 30M x 0.32mm x0.5 Signal #2 Info : 30M x 0.32mm x 0.25µm

Compound	RT#1	RT#2	Resp#1	Resp#2	ng/ml	ng/ml

System Monitoring Compounds						
4) S 2,4-DCAA	6.364	6.792	1033.6E6	351.4E6	518.794	523.299
Target Compounds						
1) T Dalapon	2.519	2.580	7097708	5673556	3.266	5.380 #
3) T 4-Nitroph...	6.205	0.000	7021203	0	5.651	N.D. #
5) T DICAMBA	6.495	6.995	1315614	1051000	<MDL	<MDL #
6) T MCPP	6.684	6.995f	4653972	1051000	<MDL	<MDL #
7) T MCPA	6.723f	7.268	-2079127	3386945	N.D.	1.159
8) T DICHLORPROP	7.046f	7.583	5216509	4000465	2.295	5.506 #
9) T 2,4-D	0.000	7.796f	0	973014	N.D.	1.092
10) T Pentachlo...	0.000	8.282	0	834924	N.D.	<MDL
11) T 2,4,5-TP ...	8.045	8.636	2388724	1939150	<MDL	<MDL #
12) T 2,4,5-T	8.297	9.011	3042836	767601	<MDL	<MDL #
13) T 2,4-DB	8.747f	9.486	433276	1067244	<MDL	2.322 #
14) T DINOSEB	9.858	0.000	1298053	0	<MDL	N.D. #
15) T Picloram	9.686	10.798	36119145	11483393	2.212	1.934
16) T DCPA	10.122	10.798	2722784	11483393	<MDL	2.238 #

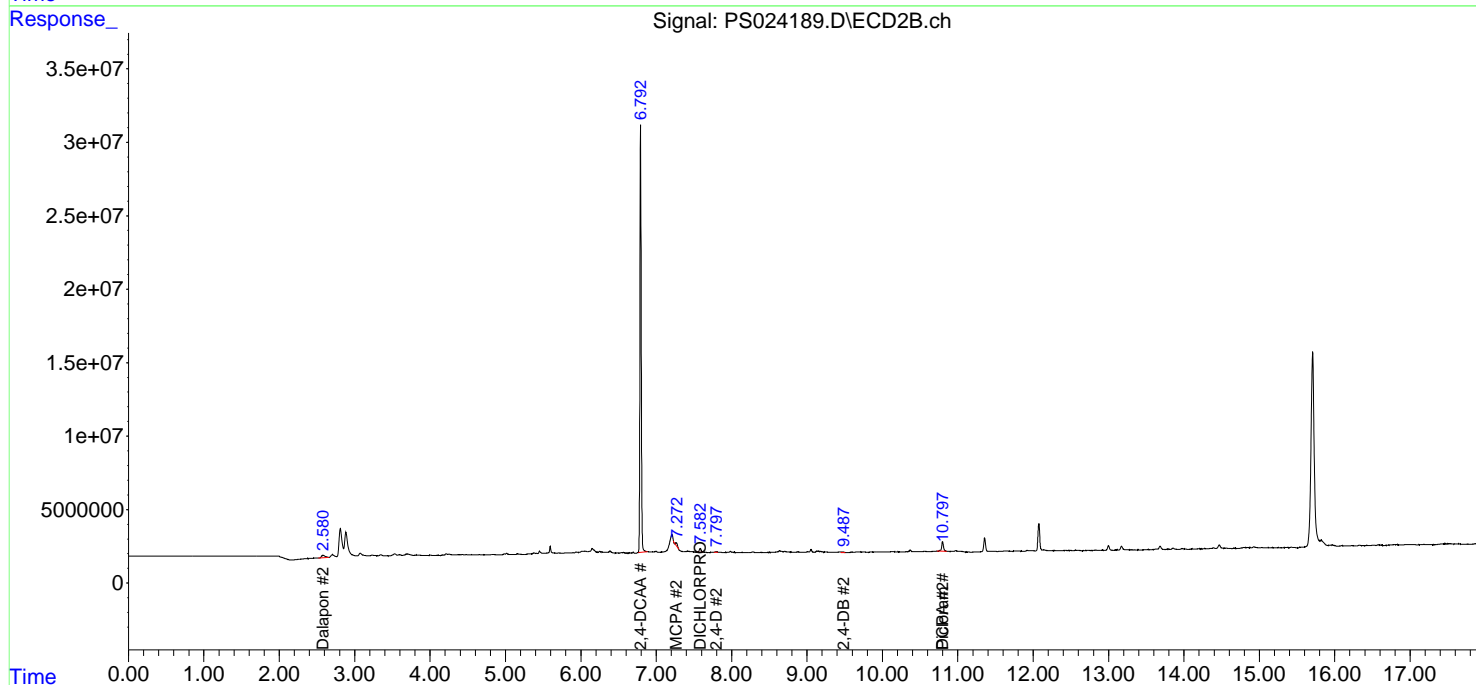
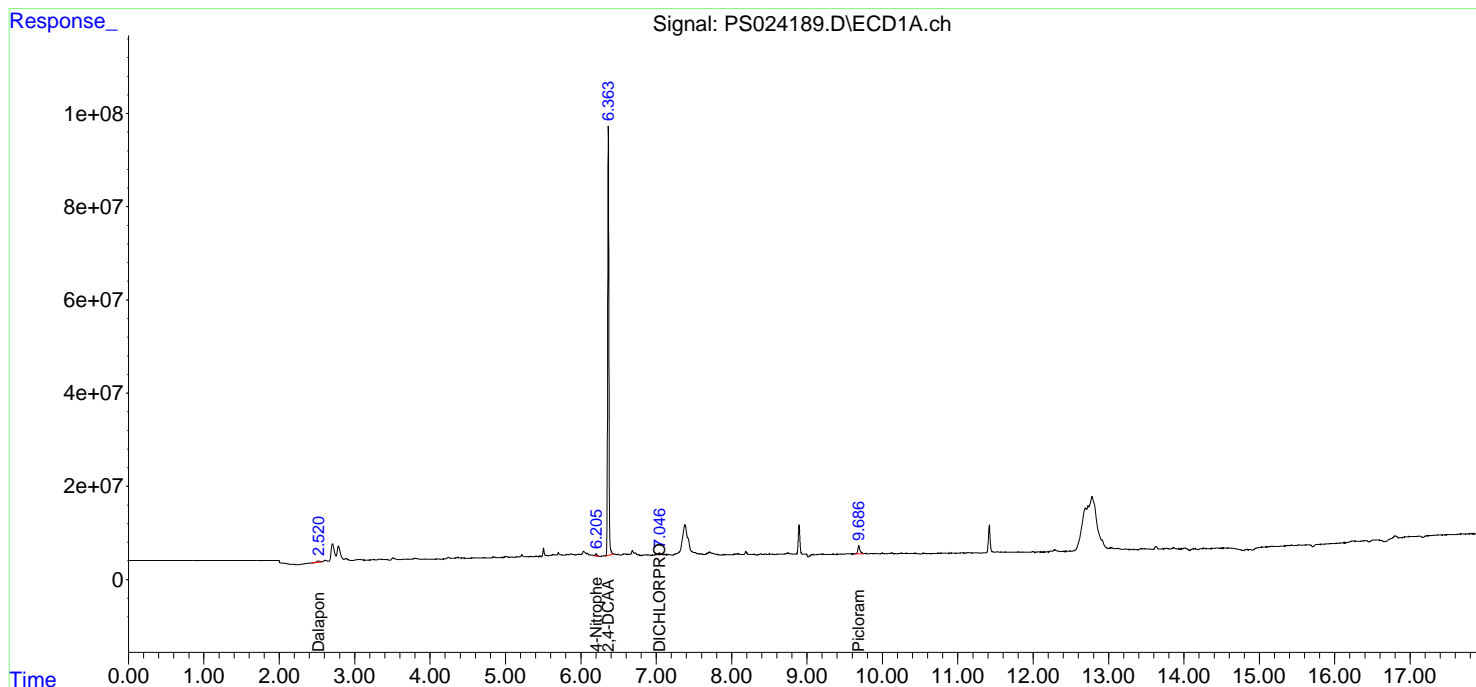
(f)=RT Delta > 1/2 Window (#)=Amounts differ by > 25% (m)=manual int.

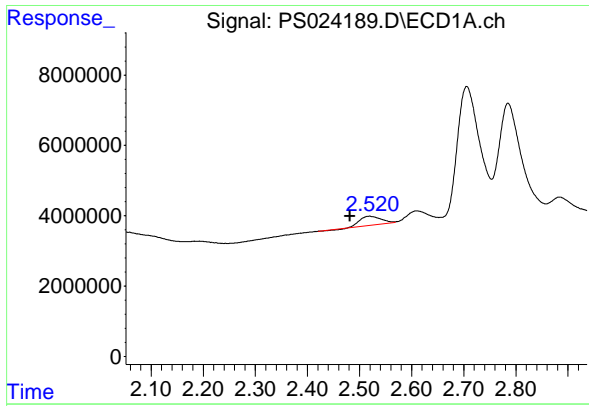
Data Path : Z:\pestpcbsrv\HPCHEM1\ECD_S\Data\PS082823\
 Data File : PS024189.D
 Signal(s) : Signal #1: ECD1A.ch Signal #2: ECD2B.ch
 Acq On : 28 Aug 2023 22:45
 Operator : AR\AJ
 Sample : I.BLK
 Misc :
 ALS Vial : 2 Sample Multiplier: 1

Instrument :
 ECD_S
 ClientSampleId :
 I.BLK

Integration File signal 1: autoint1.e
 Integration File signal 2: autoint2.e
 Quant Time: Aug 29 02:21:41 2023
 Quant Method : Z:\pestpcbsrv\HPCHEM1\ECD_S\Method\PS082823.M
 Quant Title : 8080.M
 QLast Update : Mon Aug 28 16:48:10 2023
 Response via : Initial Calibration
 Integrator: ChemStation

Volume Inj. : 2 µl
 Signal #1 Phase : Rtx-CLPesticides Signal #2 Phase: Rtx-CLPesticides2
 Signal #1 Info : 30M x 0.32mm x0.5 Signal #2 Info : 30M x 0.32mm x 0.25µm

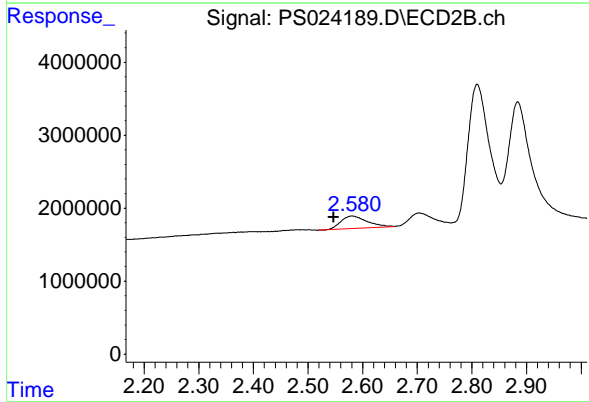




#1 Dalapon

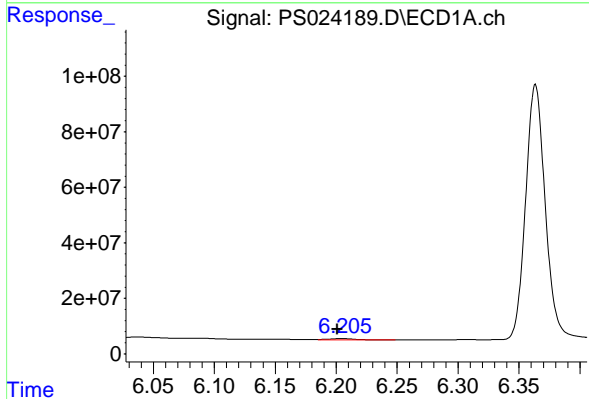
R.T.: 2.519 min
 Delta R.T.: 0.037 min
 Response: 7097708
 Conc: 3.27 ng/ml

Instrument :
 ECD_S
 ClientSampleId :
 I.BLK



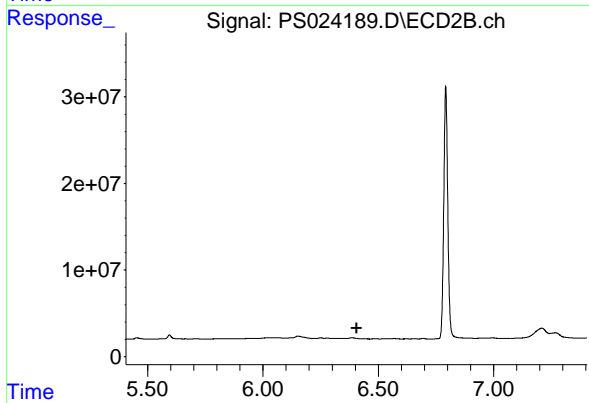
#1 Dalapon

R.T.: 2.580 min
 Delta R.T.: 0.034 min
 Response: 5673556
 Conc: 5.38 ng/ml



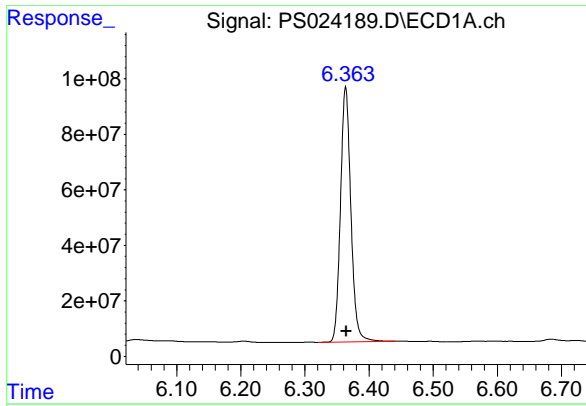
#3 4-Nitrophenol

R.T.: 6.205 min
 Delta R.T.: 0.004 min
 Response: 7021203
 Conc: 5.65 ng/ml



#3 4-Nitrophenol

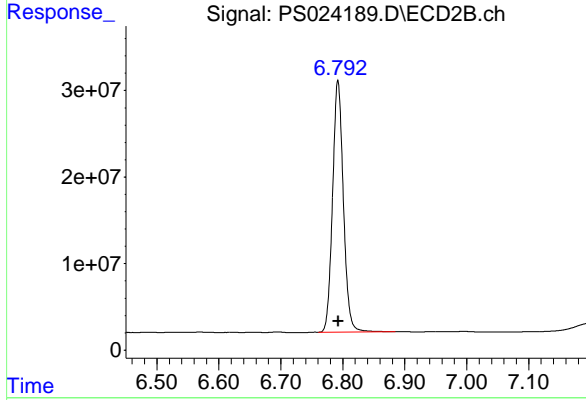
R.T.: 0.000 min
 Exp R.T. : 6.405 min
 Response: 0
 Conc: N.D.



#4 2,4-DCAA

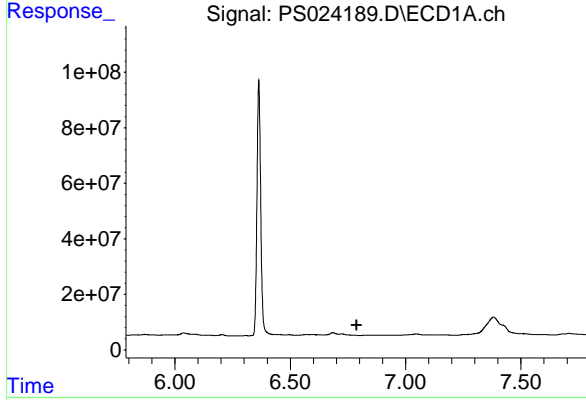
R.T.: 6.364 min
 Delta R.T.: 0.000 min
 Response: 1033603270
 Conc: 518.79 ng/ml

Instrument :
 ECD_S
 ClientSampleId :
 I.BLK



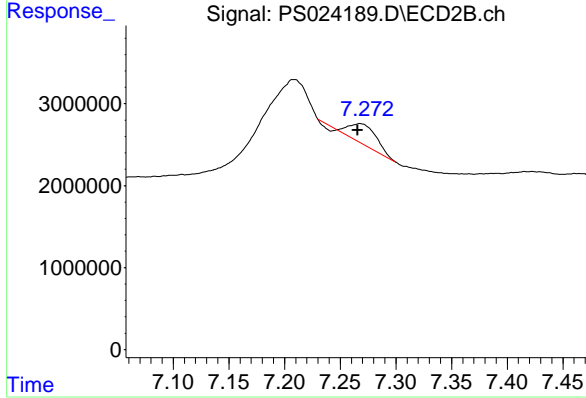
#4 2,4-DCAA

R.T.: 6.792 min
 Delta R.T.: 0.000 min
 Response: 351443558
 Conc: 523.30 ng/ml



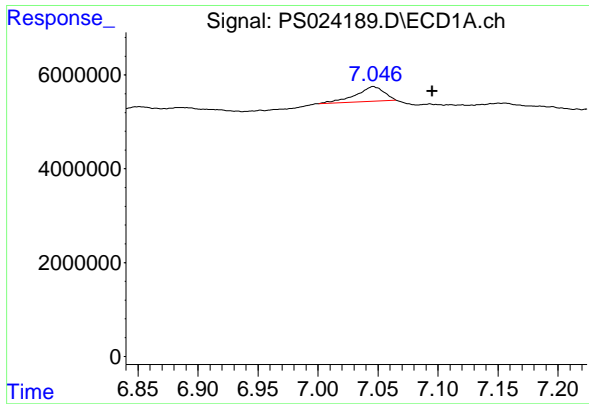
#7 MCPA

R.T.: 6.723 min
 Delta R.T.: -0.064 min
 Response: -2079127
 Conc: N.D.



#7 MCPA

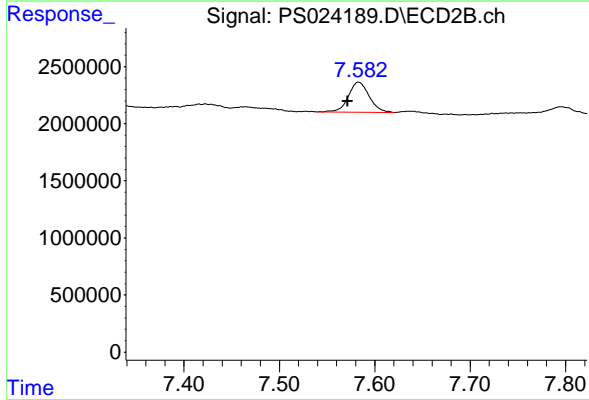
R.T.: 7.268 min
 Delta R.T.: 0.002 min
 Response: 3386945
 Conc: 1.16 ug/ml



#8 DICHLORPROP

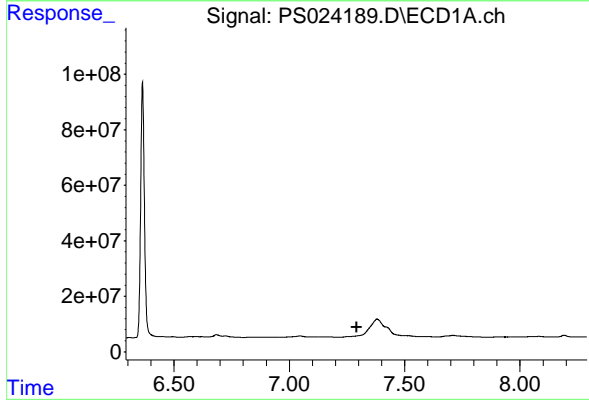
R.T.: 7.046 min
 Delta R.T.: -0.049 min
 Response: 5216509
 Conc: 2.29 ng/ml

Instrument :
 ECD_S
 ClientSampleId :
 I.BLK



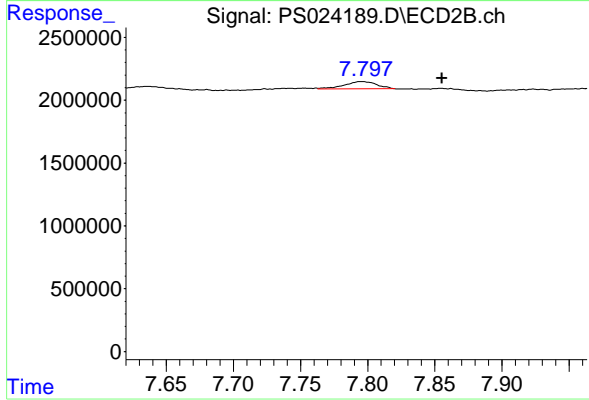
#8 DICHLORPROP

R.T.: 7.583 min
 Delta R.T.: 0.012 min
 Response: 4000465
 Conc: 5.51 ng/ml



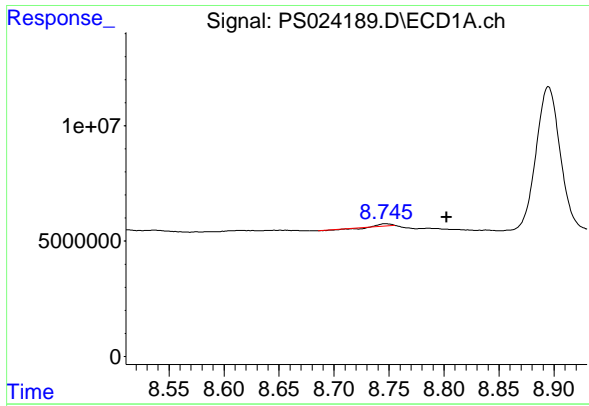
#9 2,4-D

R.T.: 0.000 min
 Exp R.T. : 7.291 min
 Response: 0
 Conc: N.D.



#9 2,4-D

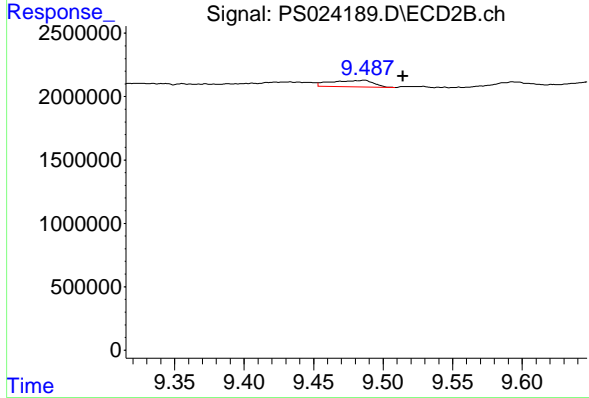
R.T.: 7.796 min
 Delta R.T.: -0.060 min
 Response: 973014
 Conc: 1.09 ng/ml



#13 2,4-DB

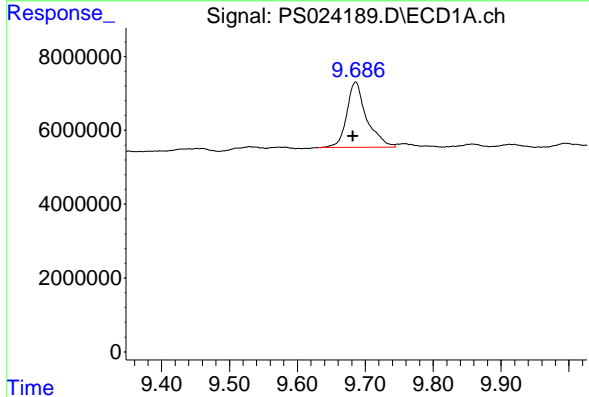
R.T.: 8.747 min
 Delta R.T.: -0.055 min
 Response: 433276
 Conc: N.D.

Instrument :
 ECD_S
 ClientSampleId :
 I.BLK



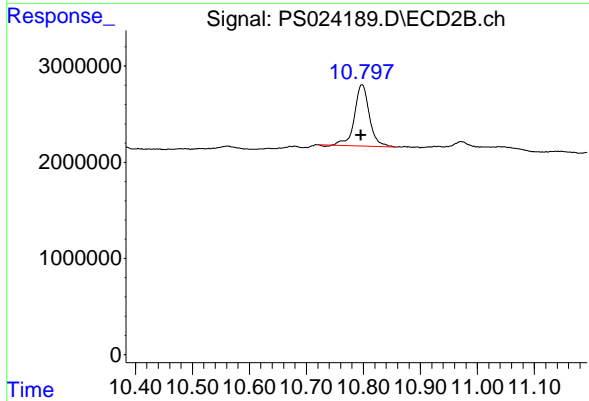
#13 2,4-DB

R.T.: 9.486 min
 Delta R.T.: -0.028 min
 Response: 1067244
 Conc: 2.32 ng/ml



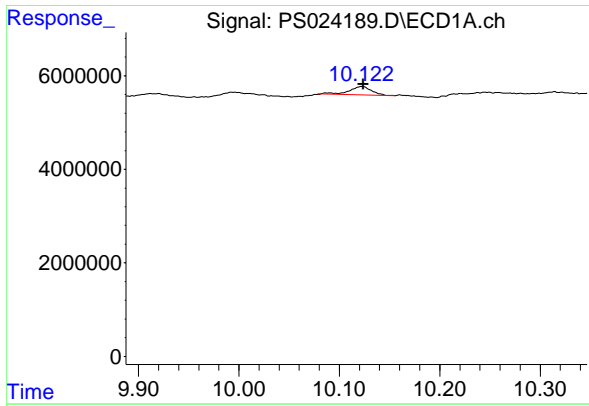
#15 Picloram

R.T.: 9.686 min
 Delta R.T.: 0.004 min
 Response: 36119145
 Conc: 2.21 ng/ml



#15 Picloram

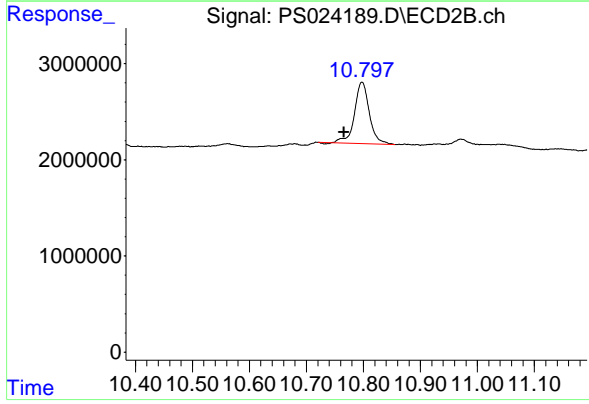
R.T.: 10.798 min
 Delta R.T.: 0.002 min
 Response: 11483393
 Conc: 1.93 ng/ml



#16 DCPA

R.T.: 10.122 min
Delta R.T.: -0.001 min
Response: 2722784
Conc: N.D.

Instrument :
ECD_S
ClientSampleId :
I.BLK



#16 DCPA

R.T.: 10.798 min
Delta R.T.: 0.031 min
Response: 11483393
Conc: 2.24 ng/ml