

Data Path : Z:\pestpcbsrv\HPCHEM1\ECD\_S\Data\PS082824\  
 Data File : PS027530.D  
 Signal(s) : Signal #1: ECD1A.ch Signal #2: ECD2B.ch  
 Acq On : 28 Aug 2024 15:21  
 Operator : AR\AJ  
 Sample : HSTDCCC750  
 Misc :  
 ALS Vial : 3 Sample Multiplier: 1

Instrument :  
 ECD\_S  
 ClientSampleId :  
 HSTDCCC750

Integration File signal 1: autoint1.e  
 Integration File signal 2: autoint2.e  
 Quant Time: Aug 29 05:05:51 2024  
 Quant Method : Z:\pestpcbsrv\HPCHEM1\ECD\_S\Method\PS081924.M  
 Quant Title : 8080.M  
 QLast Update : Mon Aug 19 14:50:32 2024  
 Response via : Initial Calibration  
 Integrator: ChemStation

Volume Inj. : 1 µl  
 Signal #1 Phase : ZB-MR1 Signal #2 Phase: ZB-MR2  
 Signal #1 Info : 30M x 0.32mm x0.5 Signal #2 Info : 30M x 0.32mm x 0.25µm

Compound	RT#1	RT#2	Resp#1	Resp#2	ng/ml	ng/ml
-----						
System Monitoring Compounds						
4) S 2,4-DCAA	7.157	7.736	1857.8E6	1402.7E6	718.322	710.514
Target Compounds						
1) T Dalapon	2.591	2.693	2101.2E6	2286.4E6	632.774	625.877
2) T 3,5-DICHL...	6.341	6.693	2654.8E6	1926.7E6	647.679	665.037
3) T 4-Nitroph...	6.955	7.266	1029.2E6	864.6E6	660.950	647.955
5) T DICAMBA	7.338	7.935	7161.0E6	6193.5E6	631.350	677.011
6) T MCPP	7.517	8.036	490.6E6	416.7E6	64.022	68.459
7) T MCPA	7.662	8.279	672.9E6	549.0E6	68.406	67.087
8) T DICHLORPROP	8.029	8.646	1847.1E6	1482.8E6	672.847	666.817
9) T 2,4-D	8.255	8.975	1974.0E6	1653.3E6	677.299	667.325
10) T Pentachlo...	8.543	9.501	28854.7E6	23305.7E6	700.352	683.502
11) T 2,4,5-TP ...	9.113	9.874	10943.8E6	9275.4E6	693.875	679.301
12) T 2,4,5-T	9.401	10.293	10596.4E6	9143.3E6	696.848	676.834
13) T 2,4-DB	9.967	10.857	1467.5E6	1132.1E6	686.364	670.105
14) T DINOSEB	11.152	11.235	8432.2E6	6366.7E6	703.002	681.779
15) T Picloram	10.969	12.326	13858.8E6	13145.0E6	689.767	671.441
16) T DCPA	11.450	12.275	13088.8E6	10154.2E6	697.829	689.638
-----						

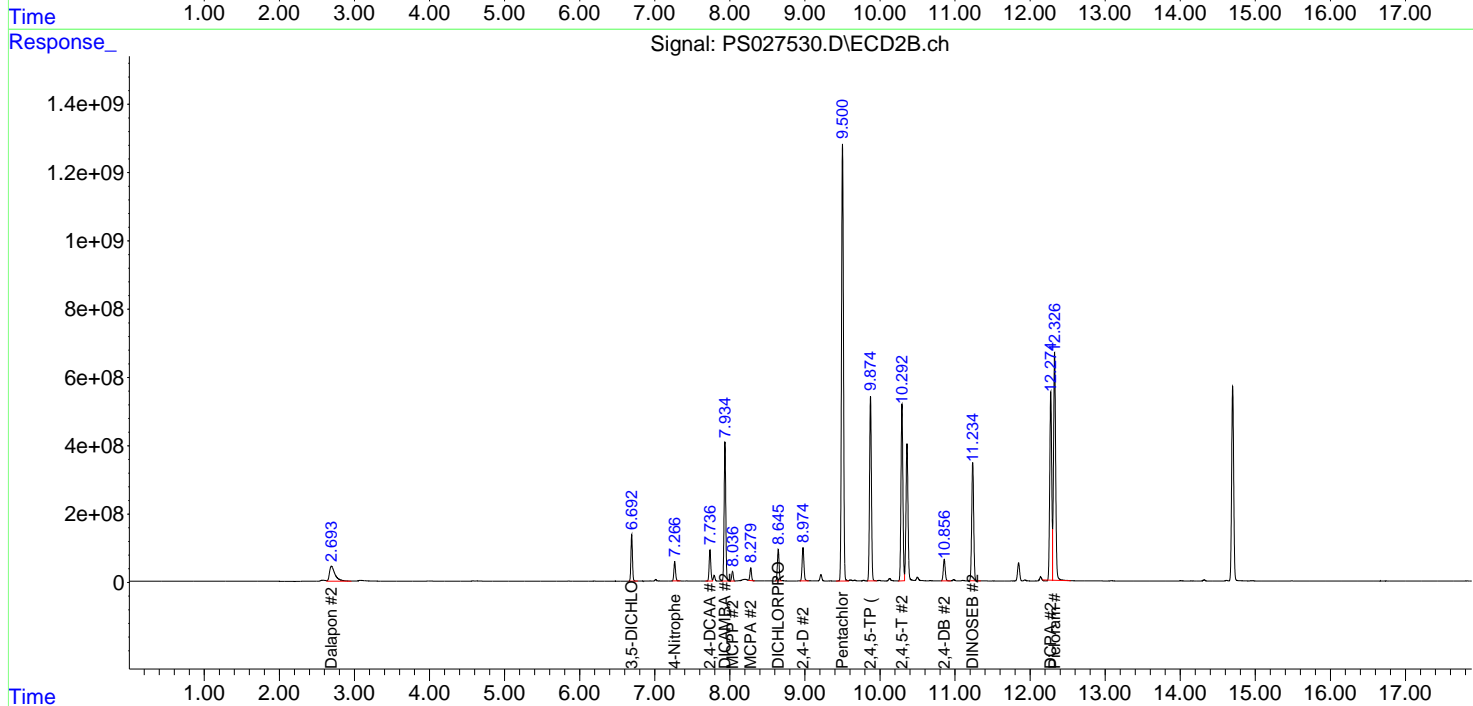
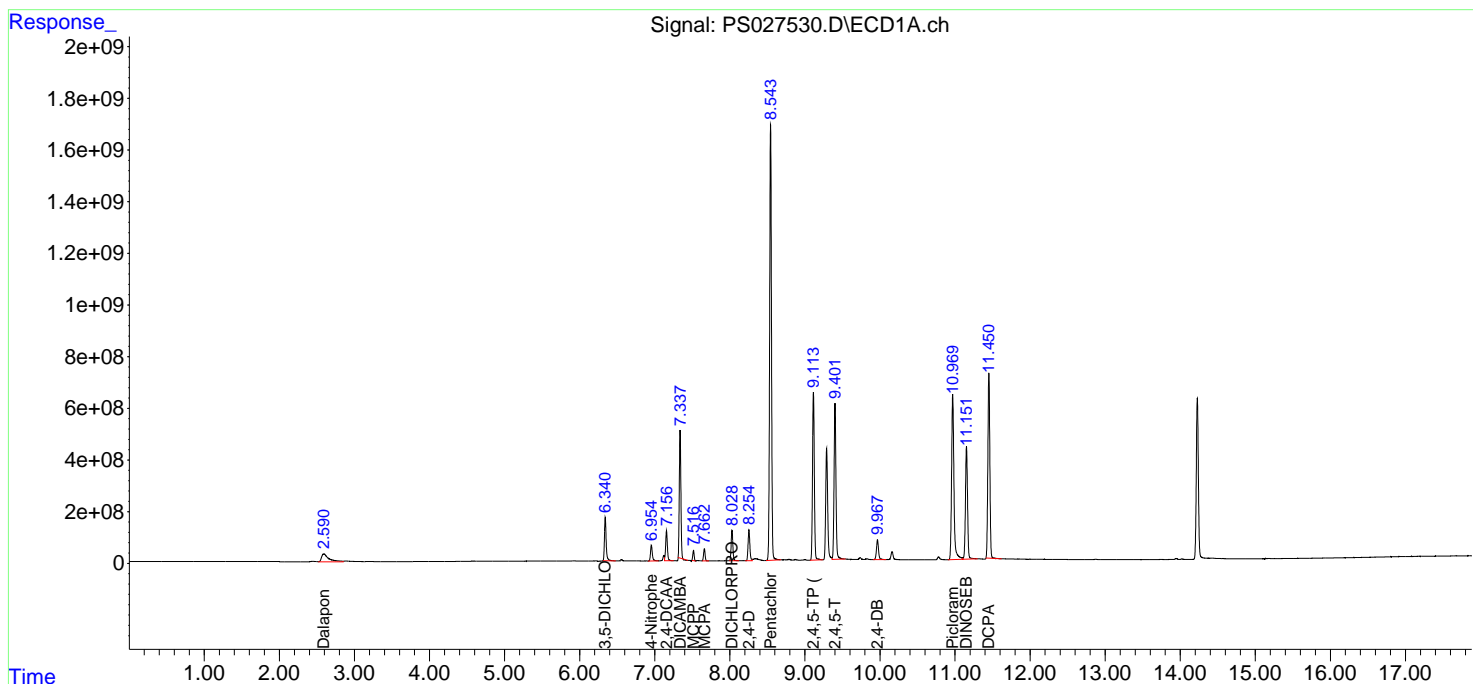
(f)=RT Delta > 1/2 Window (#)=Amounts differ by > 25% (m)=manual int.

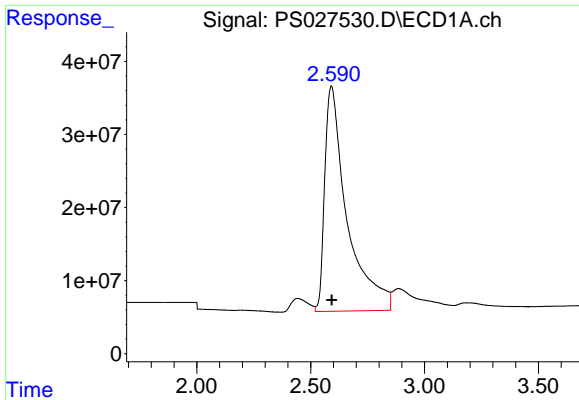
Data Path : Z:\pestpcbsrv\HPCHEM1\ECD\_S\Data\PS082824\  
 Data File : PS027530.D  
 Signal(s) : Signal #1: ECD1A.ch Signal #2: ECD2B.ch  
 Acq On : 28 Aug 2024 15:21  
 Operator : AR\AJ  
 Sample : HSTDCCC750  
 Misc :  
 ALS Vial : 3 Sample Multiplier: 1

Instrument :  
 ECD\_S  
 ClientSampleId :  
 HSTDCCC750

Integration File signal 1: autoint1.e  
 Integration File signal 2: autoint2.e  
 Quant Time: Aug 29 05:05:51 2024  
 Quant Method : Z:\pestpcbsrv\HPCHEM1\ECD\_S\Method\PS081924.M  
 Quant Title : 8080.M  
 QLast Update : Mon Aug 19 14:50:32 2024  
 Response via : Initial Calibration  
 Integrator: ChemStation

Volume Inj. : 1 µl  
 Signal #1 Phase : ZB-MR1 Signal #2 Phase: ZB-MR2  
 Signal #1 Info : 30M x 0.32mm x0.5 Signal #2 Info : 30M x 0.32mm x 0.25µm

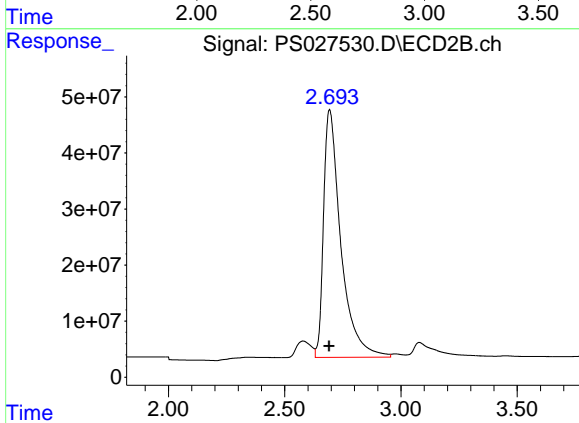




#1 Dalapon

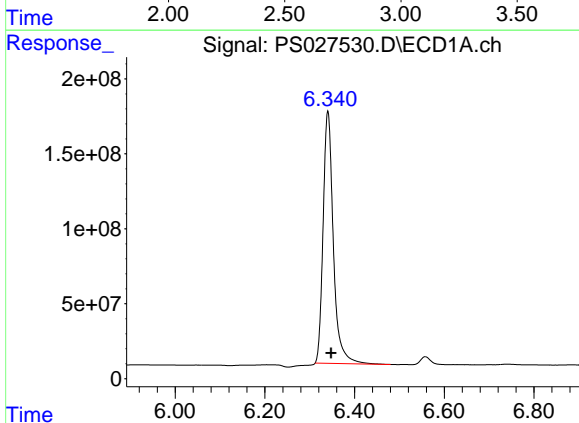
R.T.: 2.591 min  
 Delta R.T.: -0.001 min  
 Response: 2101197057  
 Conc: 632.77 ng/ml

Instrument :  
 ECD\_S  
 ClientSampleId :  
 HSTDCCC750



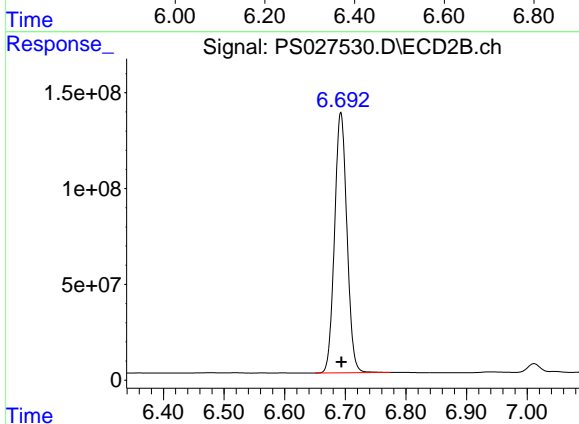
#1 Dalapon

R.T.: 2.693 min  
 Delta R.T.: 0.002 min  
 Response: 2286375050  
 Conc: 625.88 ng/ml



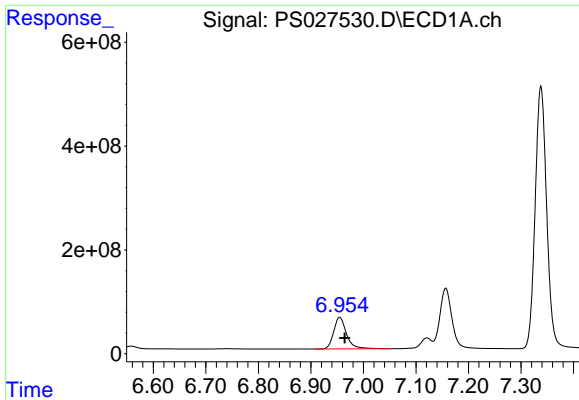
#2 3,5-DICHLOROBENZOIC ACID

R.T.: 6.341 min  
 Delta R.T.: -0.007 min  
 Response: 2654769482  
 Conc: 647.68 ng/ml



#2 3,5-DICHLOROBENZOIC ACID

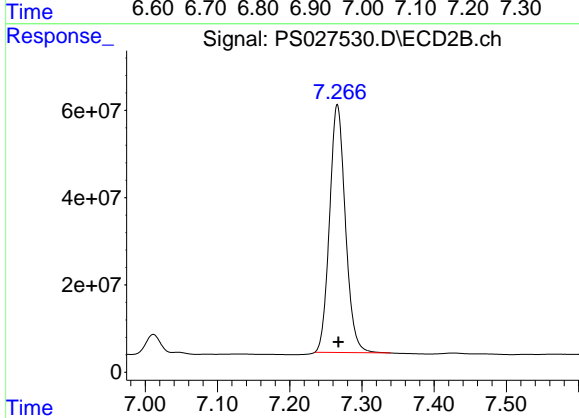
R.T.: 6.693 min  
 Delta R.T.: -0.001 min  
 Response: 1926677531  
 Conc: 665.04 ng/ml



#3 4-Nitrophenol

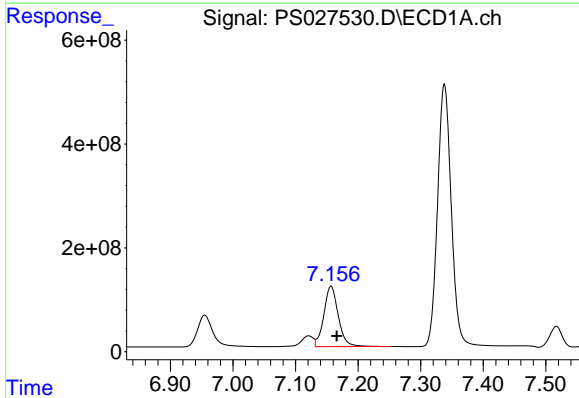
R.T.: 6.955 min  
Delta R.T.: -0.010 min  
Response: 1029230117  
Conc: 660.95 ng/ml

Instrument :  
ECD\_S  
ClientSampleId :  
HSTDCCC750



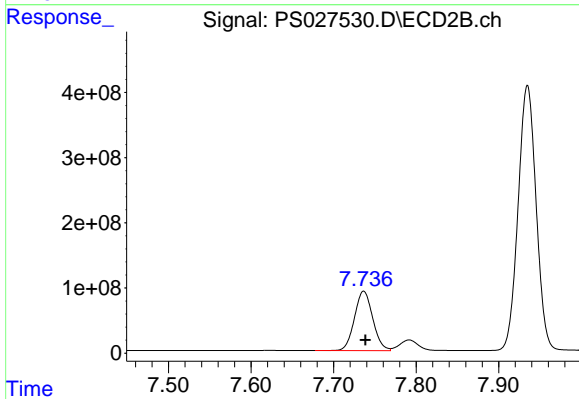
#3 4-Nitrophenol

R.T.: 7.266 min  
Delta R.T.: -0.001 min  
Response: 864632352  
Conc: 647.96 ng/ml



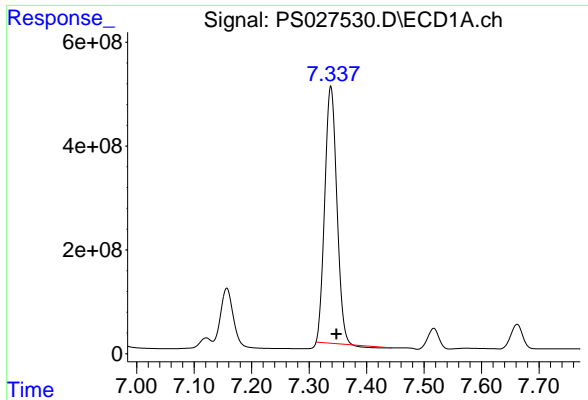
#4 2,4-DCAA

R.T.: 7.157 min  
Delta R.T.: -0.009 min  
Response: 1857766097  
Conc: 718.32 ng/ml



#4 2,4-DCAA

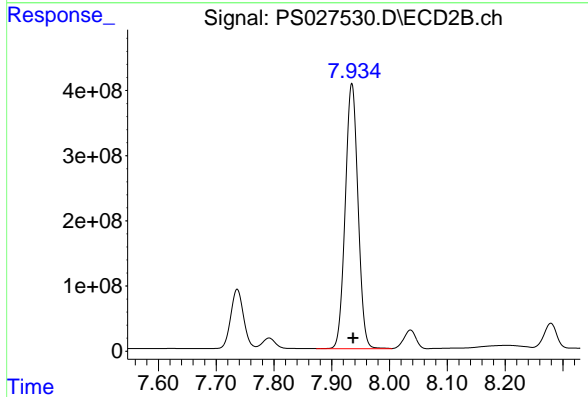
R.T.: 7.736 min  
Delta R.T.: -0.002 min  
Response: 1402721070  
Conc: 710.51 ng/ml



#5 DICAMBA

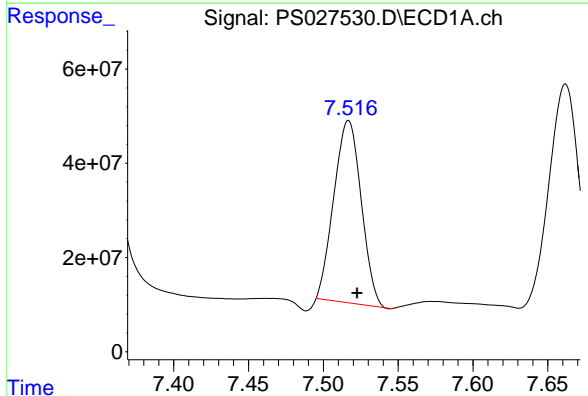
R.T.: 7.338 min  
 Delta R.T.: -0.009 min  
 Response: 7161003246  
 Conc: 631.35 ng/ml

Instrument :  
 ECD\_S  
 ClientSampleId :  
 HSTDCCC750



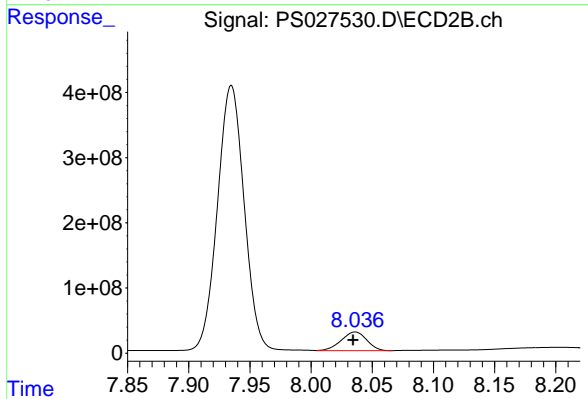
#5 DICAMBA

R.T.: 7.935 min  
 Delta R.T.: -0.002 min  
 Response: 6193469683  
 Conc: 677.01 ng/ml



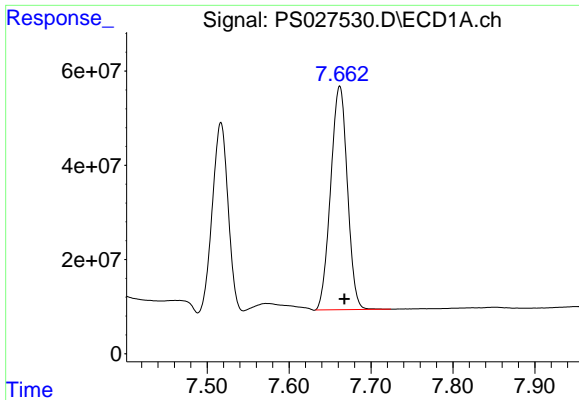
#6 MCPP

R.T.: 7.517 min  
 Delta R.T.: -0.006 min  
 Response: 490573228  
 Conc: 64.02 ug/ml



#6 MCPP

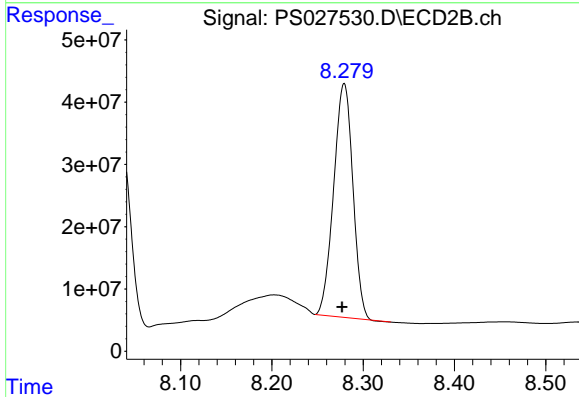
R.T.: 8.036 min  
 Delta R.T.: 0.002 min  
 Response: 416748670  
 Conc: 68.46 ug/ml



#7 MCPA

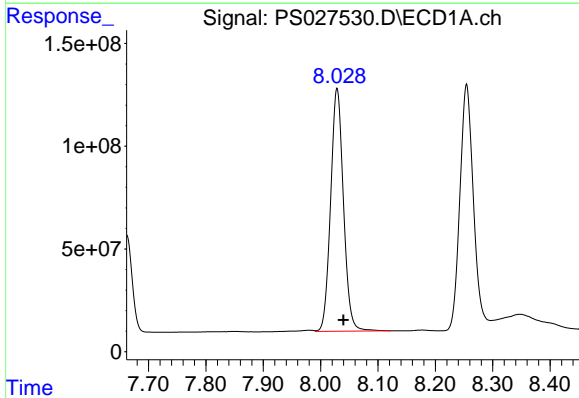
R.T.: 7.662 min  
 Delta R.T.: -0.006 min  
 Response: 672949661  
 Conc: 68.41 ug/ml

Instrument :  
 ECD\_S  
 ClientSampleId :  
 HSTDCCC750



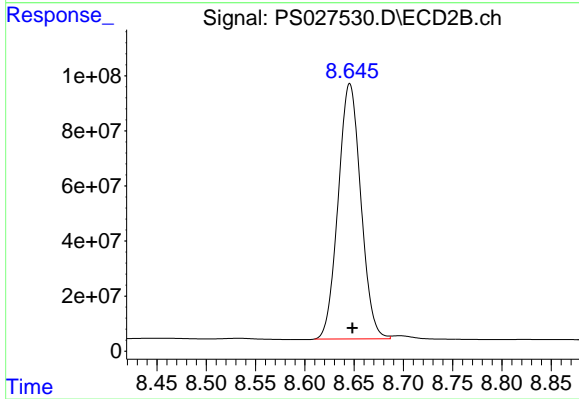
#7 MCPA

R.T.: 8.279 min  
 Delta R.T.: 0.002 min  
 Response: 548996012  
 Conc: 67.09 ug/ml



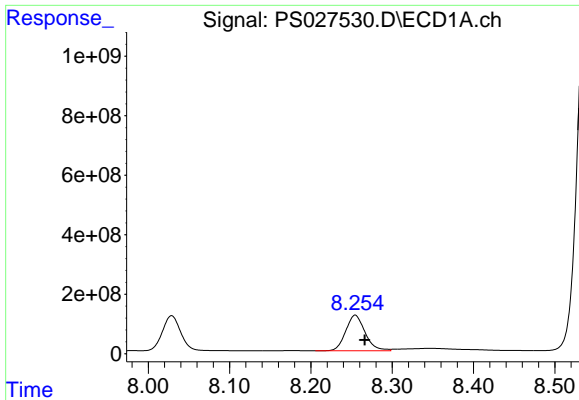
#8 DICHLORPROP

R.T.: 8.029 min  
 Delta R.T.: -0.011 min  
 Response: 1847051568  
 Conc: 672.85 ng/ml



#8 DICHLORPROP

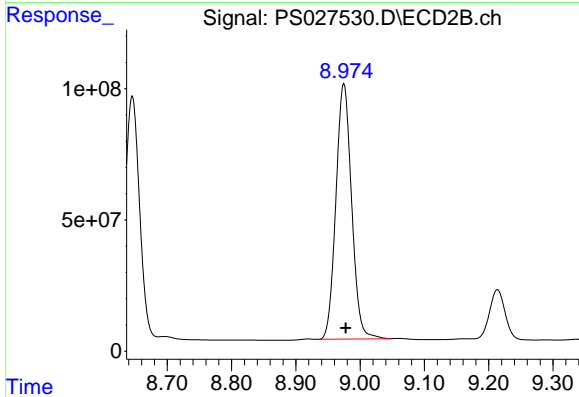
R.T.: 8.646 min  
 Delta R.T.: -0.003 min  
 Response: 1482773256  
 Conc: 666.82 ng/ml



#9 2,4-D

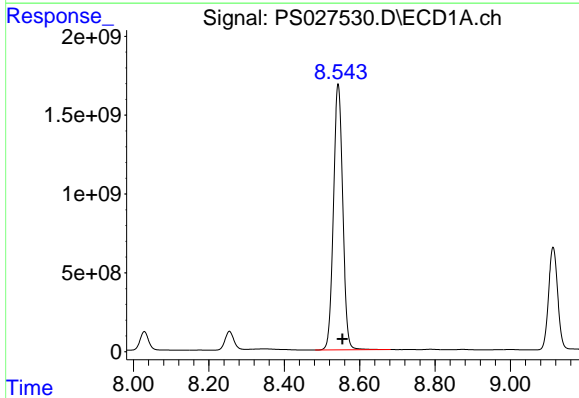
R.T.: 8.255 min  
 Delta R.T.: -0.012 min  
 Response: 1974049671  
 Conc: 677.30 ng/ml

Instrument :  
 ECD\_S  
 ClientSampleId :  
 HSTDCCC750



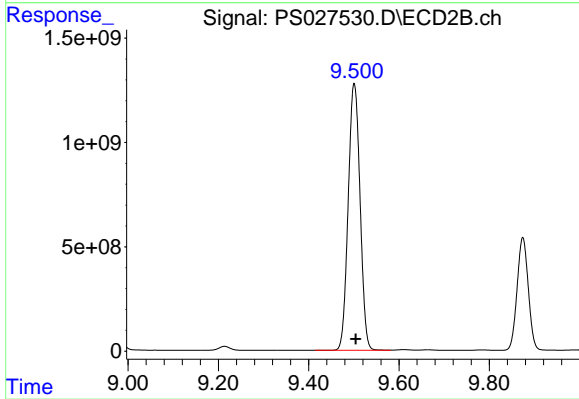
#9 2,4-D

R.T.: 8.975 min  
 Delta R.T.: -0.003 min  
 Response: 1653302463  
 Conc: 667.32 ng/ml



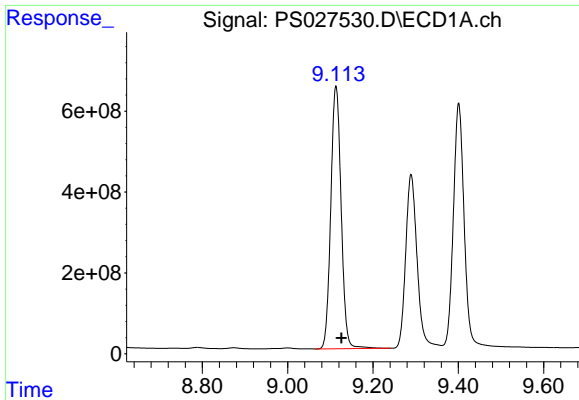
#10 Pentachlorophenol

R.T.: 8.543 min  
 Delta R.T.: -0.011 min  
 Response: 28854682853  
 Conc: 700.35 ng/ml



#10 Pentachlorophenol

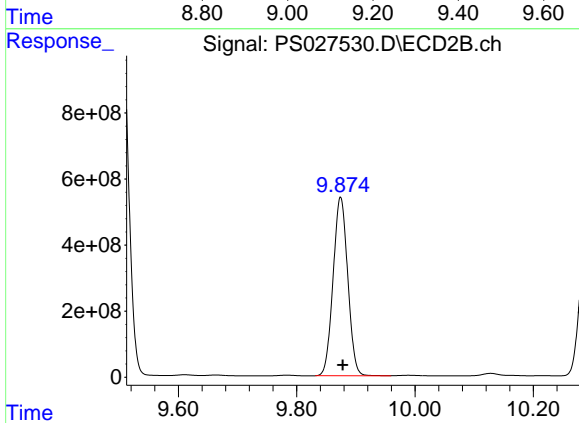
R.T.: 9.501 min  
 Delta R.T.: -0.003 min  
 Response: 23305726070  
 Conc: 683.50 ng/ml



#11 2,4,5-TP (SILVEX)

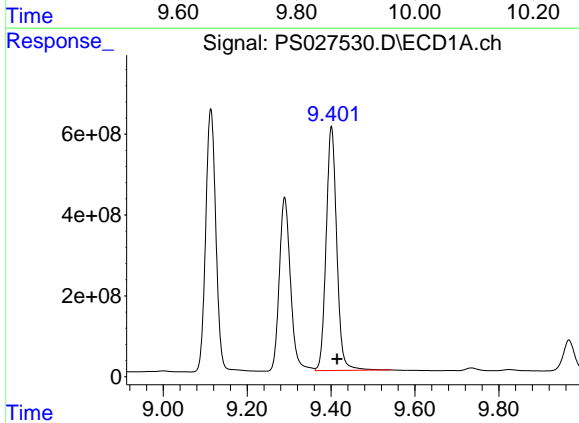
R.T.: 9.113 min  
 Delta R.T.: -0.013 min  
 Response: 10943777636  
 Conc: 693.88 ng/ml

Instrument :  
 ECD\_S  
 ClientSampleId :  
 HSTDCCC750



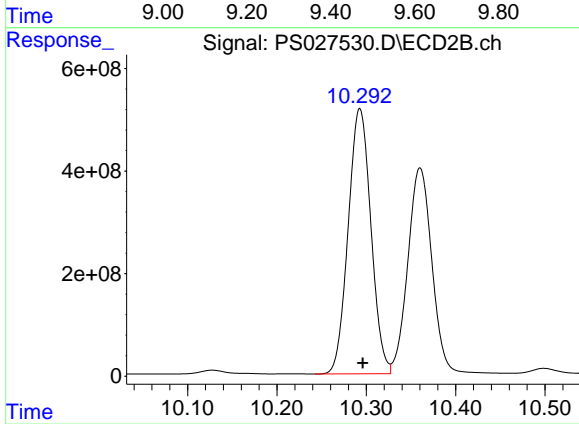
#11 2,4,5-TP (SILVEX)

R.T.: 9.874 min  
 Delta R.T.: -0.004 min  
 Response: 9275397155  
 Conc: 679.30 ng/ml



#12 2,4,5-T

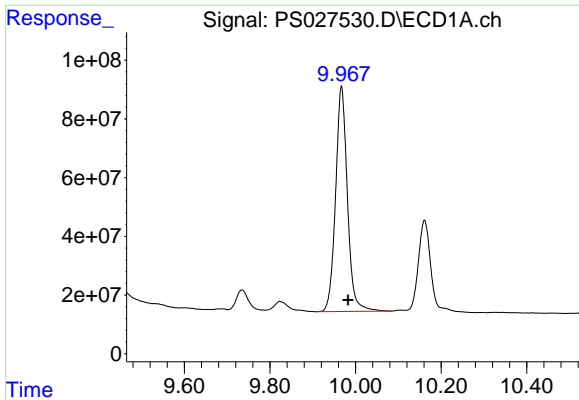
R.T.: 9.401 min  
 Delta R.T.: -0.014 min  
 Response: 10596394649  
 Conc: 696.85 ng/ml



#12 2,4,5-T

R.T.: 10.293 min  
 Delta R.T.: -0.003 min  
 Response: 9143286441  
 Conc: 676.83 ng/ml

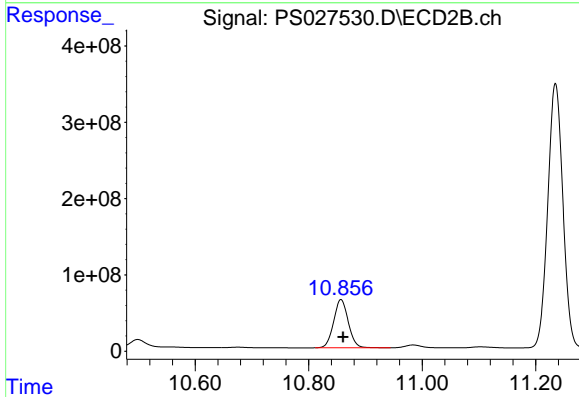




#13 2,4-DB

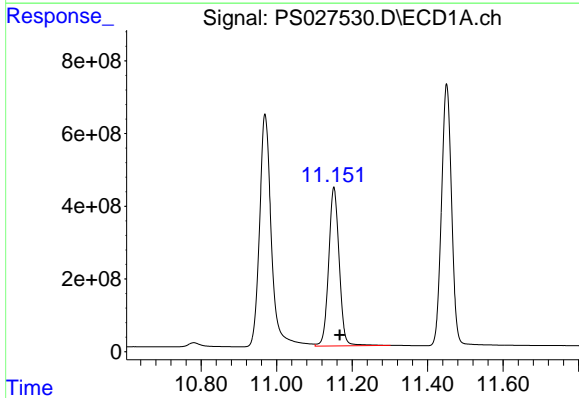
R.T.: 9.967 min  
Delta R.T.: -0.015 min  
Response: 1467542709  
Conc: 686.36 ng/ml

Instrument :  
ECD\_S  
ClientSampleId :  
HSTDCCC750



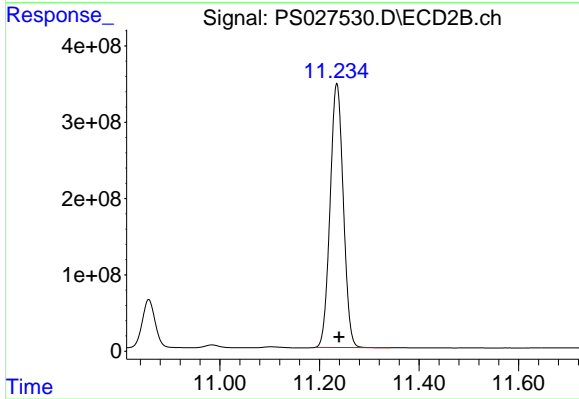
#13 2,4-DB

R.T.: 10.857 min  
Delta R.T.: -0.004 min  
Response: 1132053567  
Conc: 670.10 ng/ml



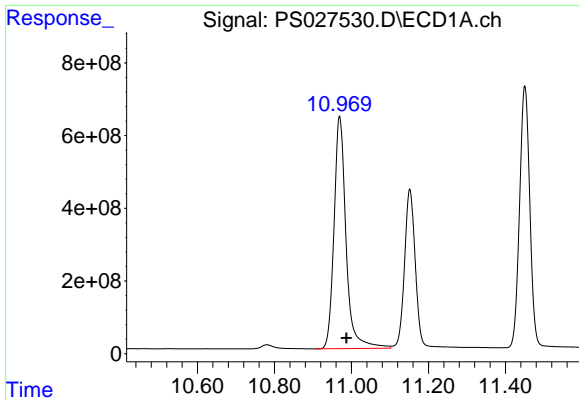
#14 DINOSEB

R.T.: 11.152 min  
Delta R.T.: -0.016 min  
Response: 8432191791  
Conc: 703.00 ng/ml



#14 DINOSEB

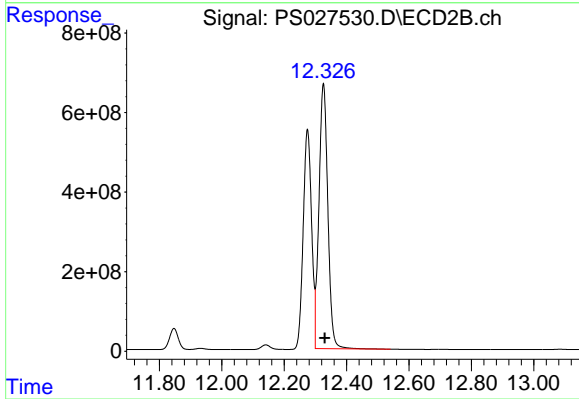
R.T.: 11.235 min  
Delta R.T.: -0.004 min  
Response: 6366708538  
Conc: 681.78 ng/ml



#15 Picloram

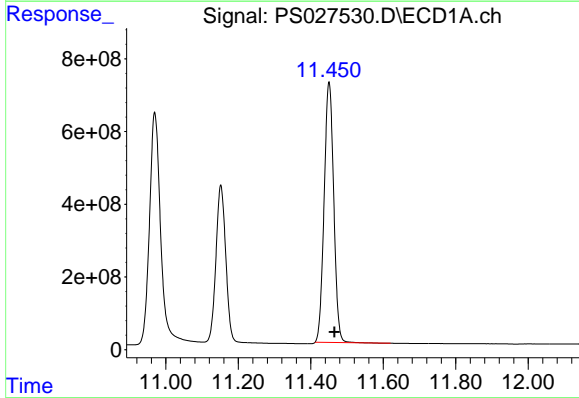
R.T.: 10.969 min  
 Delta R.T.: -0.018 min  
 Response: 13858774889  
 Conc: 689.77 ng/ml

Instrument :  
 ECD\_S  
 ClientSampleId :  
 HSTDCCC750



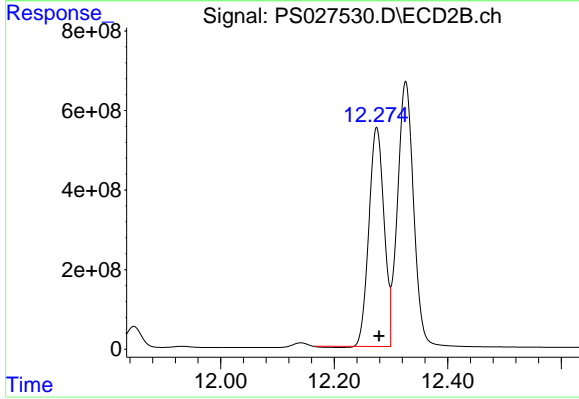
#15 Picloram

R.T.: 12.326 min  
 Delta R.T.: -0.005 min  
 Response: 13144974675  
 Conc: 671.44 ng/ml



#16 DCPA

R.T.: 11.450 min  
 Delta R.T.: -0.015 min  
 Response: 13088794977  
 Conc: 697.83 ng/ml



#16 DCPA

R.T.: 12.275 min  
 Delta R.T.: -0.004 min  
 Response: 10154211215  
 Conc: 689.64 ng/ml