

Data Path : Z:\pestpcbsrv\HPCHEM1\ECD_S\Data\PS083019\
 Data File : PS006458.D
 Signal(s) : Signal #1: ECD1A.ch Signal #2: ECD2B.ch
 Acq On : 30 Aug 2019 19:54
 Operator : SM\AJ
 Sample : K4439-07
 Misc :
 ALS Vial : 30 Sample Multiplier: 1

Instrument :
 ECD_S
 ClientSampleId :
 S-5-(1-3)

Integration File signal 1: autoint1.e
 Integration File signal 2: autoint2.e
 Quant Time: Aug 31 00:21:41 2019
 Quant Method : Z:\pestpcbsrv\HPCHEM1\ECD_S\Method\PS081419.M
 Quant Title : 8080.M
 QLast Update : Wed Aug 14 15:09:52 2019
 Response via : Initial Calibration
 Integrator: ChemStation

Volume Inj. : 2 µl
 Signal #1 Phase : Rtx-CLPesticides Signal #2 Phase: Rtx-CLPesticides2
 Signal #1 Info : 30M x 0.32mm x0.5 Signal #2 Info : 30M x 0.32mm x 0.25µm

	Compound	RT#1	RT#2	Resp#1	Resp#2	ng/ml	ng/ml

System Monitoring Compounds							
4) S	2,4-DCAA	5.499	5.229	136.3E6	69730444	157.923	141.771
Target Compounds							
1) T	Dalapon	2.042	1.754	45176705	136.8E6	41.461	217.961 #
3) T	4-Nitroph...	5.297	0.000	4632135	0	12.339	N.D. #
5) T	DICAMBA	5.594	0.000	25394398	0	7.907	N.D. #
7) T	MCPA	0.000	5.604	0	36559658	N.D.	17.889
9) T	2,4-D	6.564	0.000	227.0E6	0	278.630	N.D. #
10) T	Pentachlo...	0.000	6.588	0	10980946	N.D.	1.624
13) T	2,4-DB	8.156	0.000	101.2E6	0	162.512	N.D. #
15) T	Picloram	0.000	9.043	0	27084966	N.D.	6.004

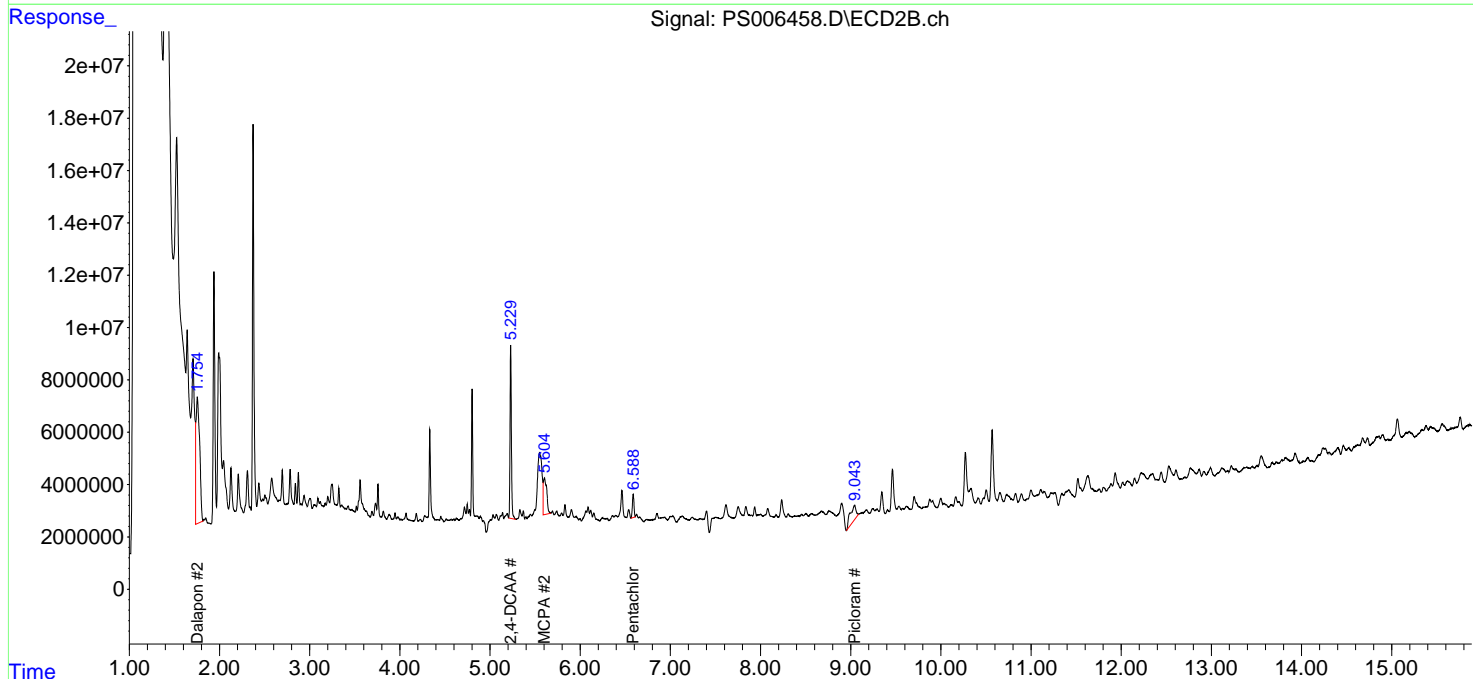
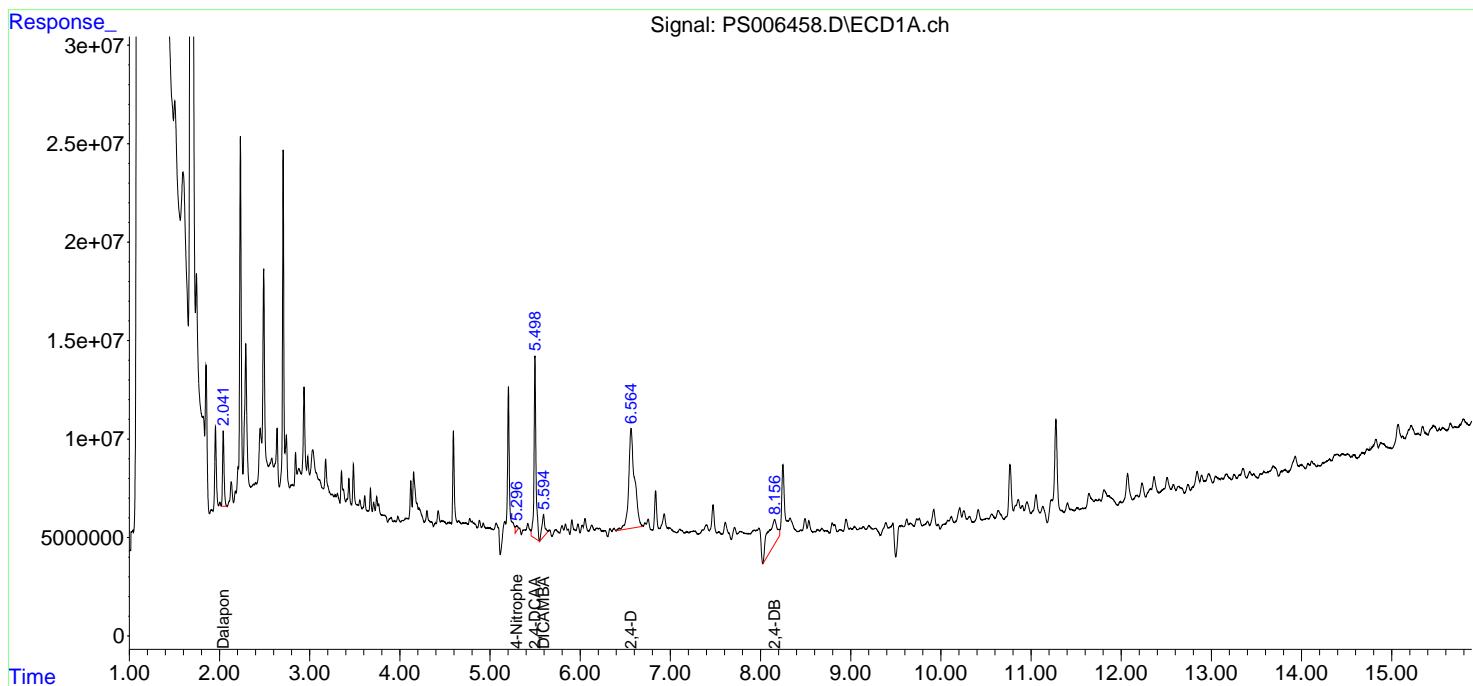
(f)=RT Delta > 1/2 Window (#)=Amounts differ by > 25% (m)=manual int.

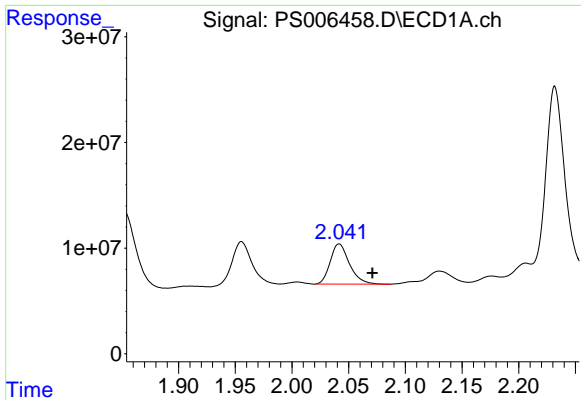
Data Path : Z:\pestpcbsrv\HPCHEM1\ECD_S\Data\PS083019\
 Data File : PS006458.D
 Signal(s) : Signal #1: ECD1A.ch Signal #2: ECD2B.ch
 Acq On : 30 Aug 2019 19:54
 Operator : SM\AJ
 Sample : K4439-07
 Misc :
 ALS Vial : 30 Sample Multiplier: 1

Instrument :
 ECD_S
 ClientSampled :
 S-5-(1-3)

Integration File signal 1: autoint1.e
 Integration File signal 2: autoint2.e
 Quant Time: Aug 31 00:21:41 2019
 Quant Method : Z:\pestpcbsrv\HPCHEM1\ECD_S\Method\PS081419.M
 Quant Title : 8080.M
 QLast Update : Wed Aug 14 15:09:52 2019
 Response via : Initial Calibration
 Integrator: ChemStation

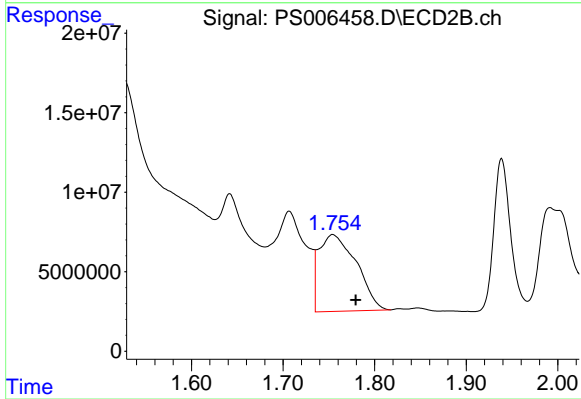
Volume Inj. : 2 µl
 Signal #1 Phase : Rtx-CLPesticides Signal #2 Phase: Rtx-CLPesticides2
 Signal #1 Info : 30M x 0.32mm x 0.5 Signal #2 Info : 30M x 0.32mm x 0.25µm



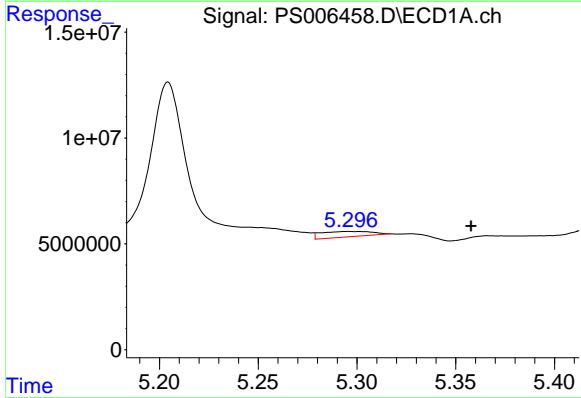


#1 Dalapon
 R.T.: 2.042 min
 Delta R.T.: -0.029 min
 Response: 45176705
 Conc: 41.46 ng/ml

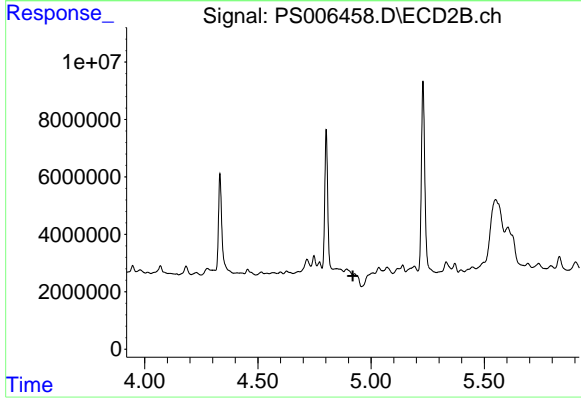
Instrument :
 ECD_S
 ClientSampled :
 S-5-(1-3)



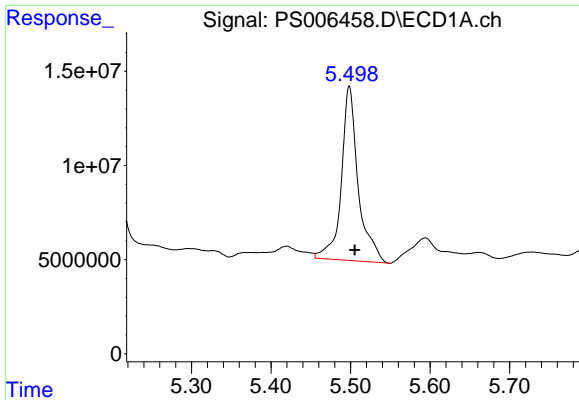
#1 Dalapon
 R.T.: 1.754 min
 Delta R.T.: -0.025 min
 Response: 136769264
 Conc: 217.96 ng/ml



#3 4-Nitrophenol
 R.T.: 5.297 min
 Delta R.T.: -0.061 min
 Response: 4632135
 Conc: 12.34 ng/ml



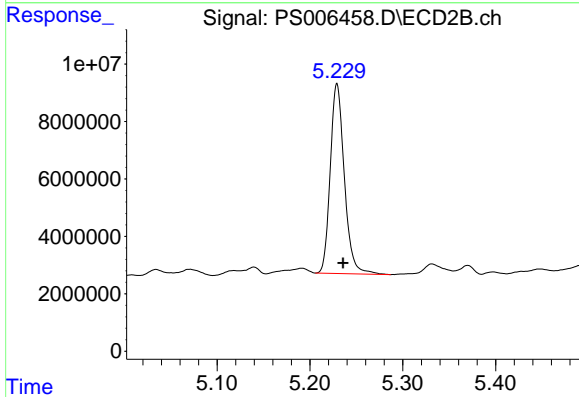
#3 4-Nitrophenol
 R.T.: 0.000 min
 Exp R.T. : 4.920 min
 Response: 0
 Conc: N.D.



#4 2,4-DCAA

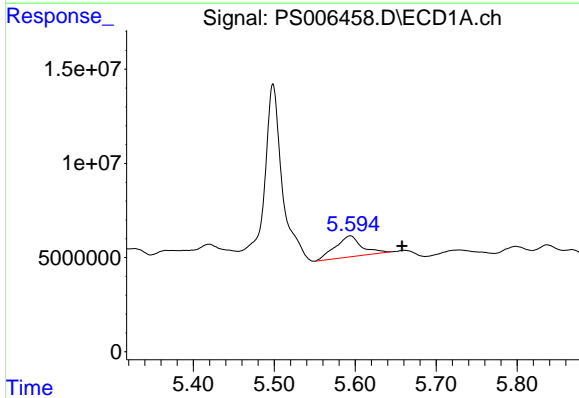
R.T.: 5.499 min
 Delta R.T.: -0.007 min
 Response: 136319246
 Conc: 157.92 ng/ml

Instrument :
 ECD_S
 ClientSampled :
 S-5-(1-3)



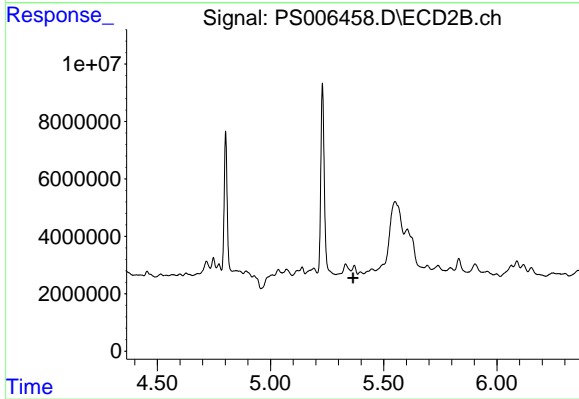
#4 2,4-DCAA

R.T.: 5.229 min
 Delta R.T.: -0.006 min
 Response: 69730444
 Conc: 141.77 ng/ml



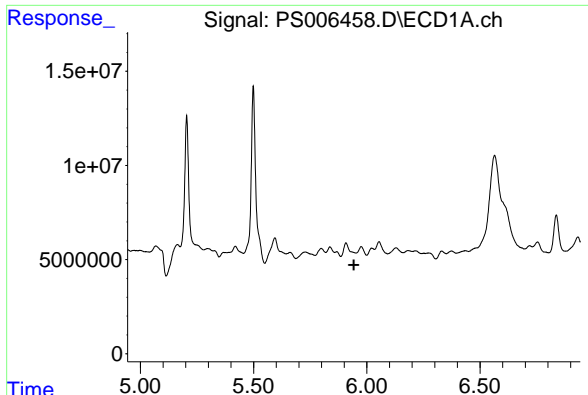
#5 DICAMBA

R.T.: 5.594 min
 Delta R.T.: -0.064 min
 Response: 25394398
 Conc: 7.91 ng/ml



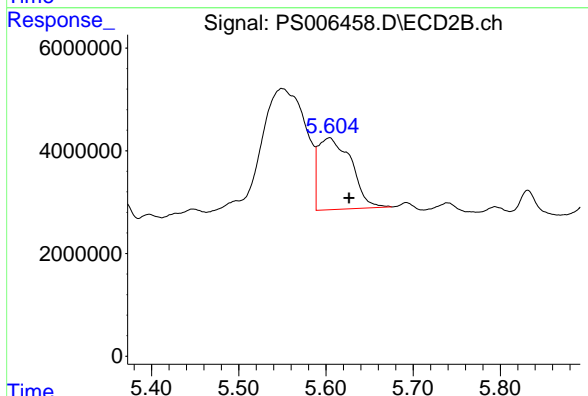
#5 DICAMBA

R.T.: 0.000 min
 Exp R.T. : 5.364 min
 Response: 0
 Conc: N.D.

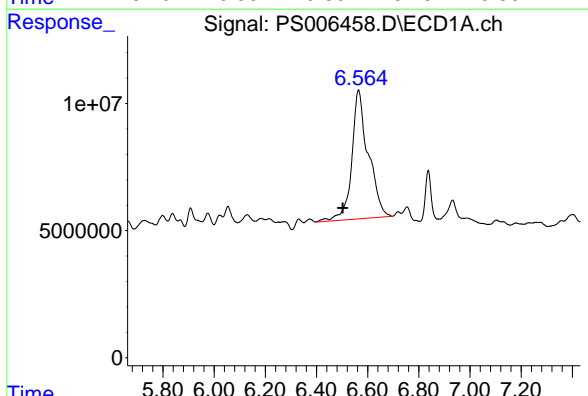


#7 MCPA
 R.T.: 0.000 min
 Exp R.T.: 5.943 min
 Response: 0
 Conc: N.D.

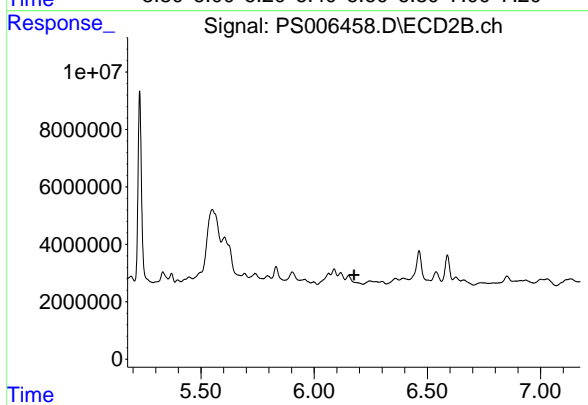
Instrument :
 ECD_S
 ClientSampleId :
 S-5-(1-3)



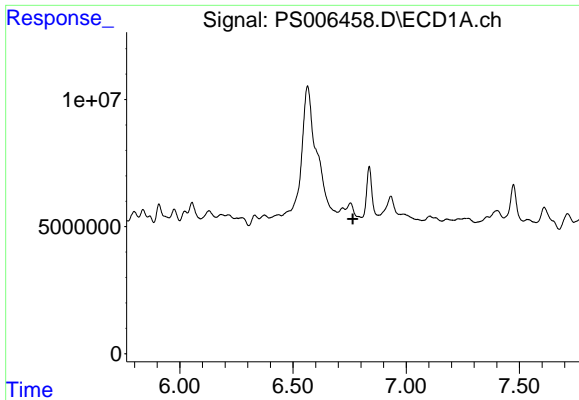
#7 MCPA
 R.T.: 5.604 min
 Delta R.T.: -0.023 min
 Response: 36559658
 Conc: 17.89 ug/ml



#9 2,4-D
 R.T.: 6.564 min
 Delta R.T.: 0.061 min
 Response: 227023372
 Conc: 278.63 ng/ml



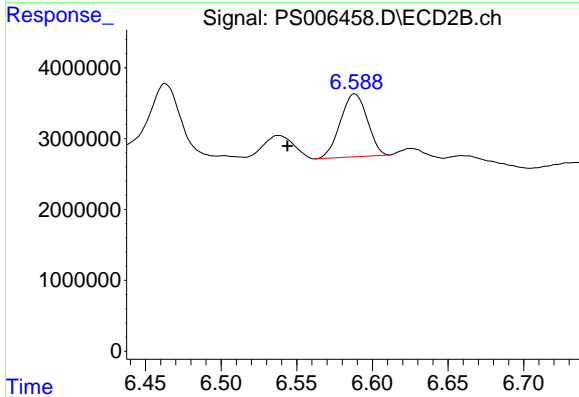
#9 2,4-D
 R.T.: 0.000 min
 Exp R.T.: 6.176 min
 Response: 0
 Conc: N.D.



#10 Pentachlorophenol

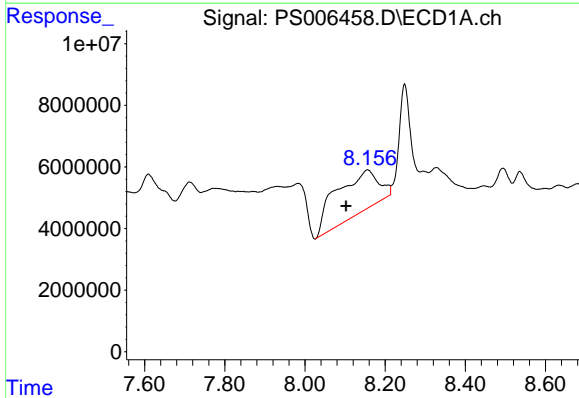
R.T.: 0.000 min
 Exp R.T.: 6.764 min
 Response: 0
 Conc: N.D.

Instrument :
 ECD_S
 ClientSampleId :
 S-5-(1-3)



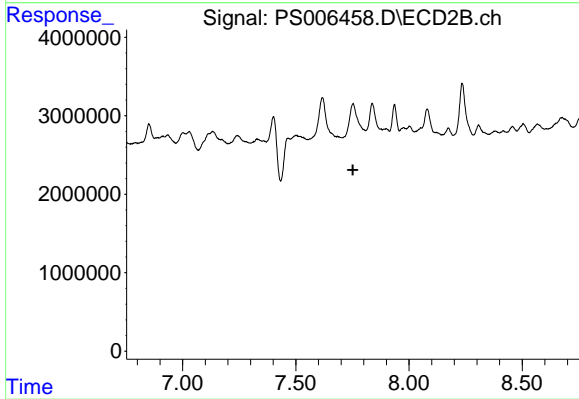
#10 Pentachlorophenol

R.T.: 6.588 min
 Delta R.T.: 0.045 min
 Response: 10980946
 Conc: 1.62 ng/ml



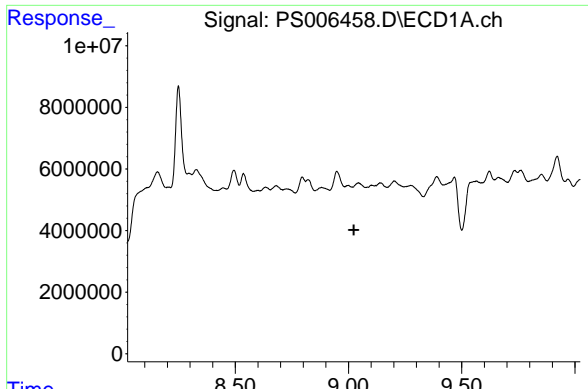
#13 2,4-DB

R.T.: 8.156 min
 Delta R.T.: 0.054 min
 Response: 101209880
 Conc: 162.51 ng/ml



#13 2,4-DB

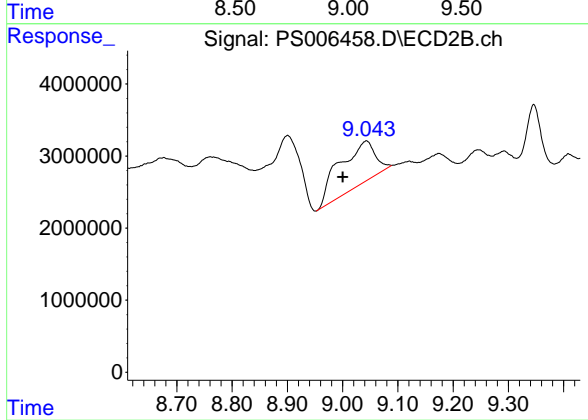
R.T.: 0.000 min
 Exp R.T.: 7.752 min
 Response: 0
 Conc: N.D.



#15 Picloram

R.T.: 0.000 min
 Exp R.T.: 9.024 min
 Response: 0
 Conc: N.D.

Instrument :
 ECD_S
 ClientSampleId :
 S-5-(1-3)



#15 Picloram

R.T.: 9.043 min
 Delta R.T.: 0.043 min
 Response: 27084966
 Conc: 6.00 ng/ml