

Data Path : Z:\pestpcbsrv\HPCHEM1\ECD_S\Data\PS083123\
 Data File : PS024235.D
 Signal(s) : Signal #1: ECD1A.ch Signal #2: ECD2B.ch
 Acq On : 31 Aug 2023 08:39
 Operator : AR\AJ
 Sample : I.BLK
 Misc :
 ALS Vial : 2 Sample Multiplier: 1

Instrument :
 ECD_S
 ClientSampleId :

Integration File signal 1: autoint1.e
 Integration File signal 2: autoint2.e
 Quant Time: Sep 01 00:37:31 2023
 Quant Method : Z:\pestpcbsrv\HPCHEM1\ECD_S\Method\PS082823.M
 Quant Title : 8080.M
 QLast Update : Mon Aug 28 16:48:10 2023
 Response via : Initial Calibration
 Integrator: ChemStation

Volume Inj. : 2 µl
 Signal #1 Phase : Rtx-CLPesticides Signal #2 Phase: Rtx-CLPesticides2
 Signal #1 Info : 30M x 0.32mm x0.5 Signal #2 Info : 30M x 0.32mm x 0.25µm

	Compound	RT#1	RT#2	Resp#1	Resp#2	ng/ml	ng/ml

System Monitoring Compounds							
4) S	2,4-DCAA	6.364	6.791	1095.0E6	367.7E6	549.588	547.520
Target Compounds							
1) T	Dalapon	2.514	2.574	5386087	3580687	2.478	3.396 #
2) T	3,5-DICHL...	5.702	5.944	3031428	7327	<MDL	<MDL #
3) T	4-Nitroph...	6.202	6.386	11403803	357547	9.179	<MDL #
5) T	DICAMBA	6.494	6.997f	1056971	2818036	<MDL	<MDL #
6) T	MCP P	6.684	6.997f	2680994	2818036	<MDL	1.471 #
7) T	MCPA	6.850f	0.000	929261	0	<MDL	N.D. #
8) T	DICHLORPROP	7.049f	7.582	1520082	2304100	<MDL	3.171 #
9) T	2,4-D	7.255	7.798f	14669617	742319	5.515	<MDL #
10) T	Pentachlo...	7.516	8.279	3730779	578819	<MDL	<MDL #
11) T	2,4,5-TP ...	8.044	8.636	1423898	1152946	<MDL	<MDL #
12) T	2,4,5-T	8.299	9.010	2376978	619656	<MDL	<MDL #
13) T	2,4-DB	8.794	9.513	-286622	1000610	N.D.	2.177
14) T	DINOSEB	9.854	0.000	1863002	0	<MDL	N.D. #
15) T	Picloram	9.686	10.796	88281850	24422120	5.406	4.112
16) T	DCPA	10.120	10.796	1773912	24422120	<MDL	4.761 #

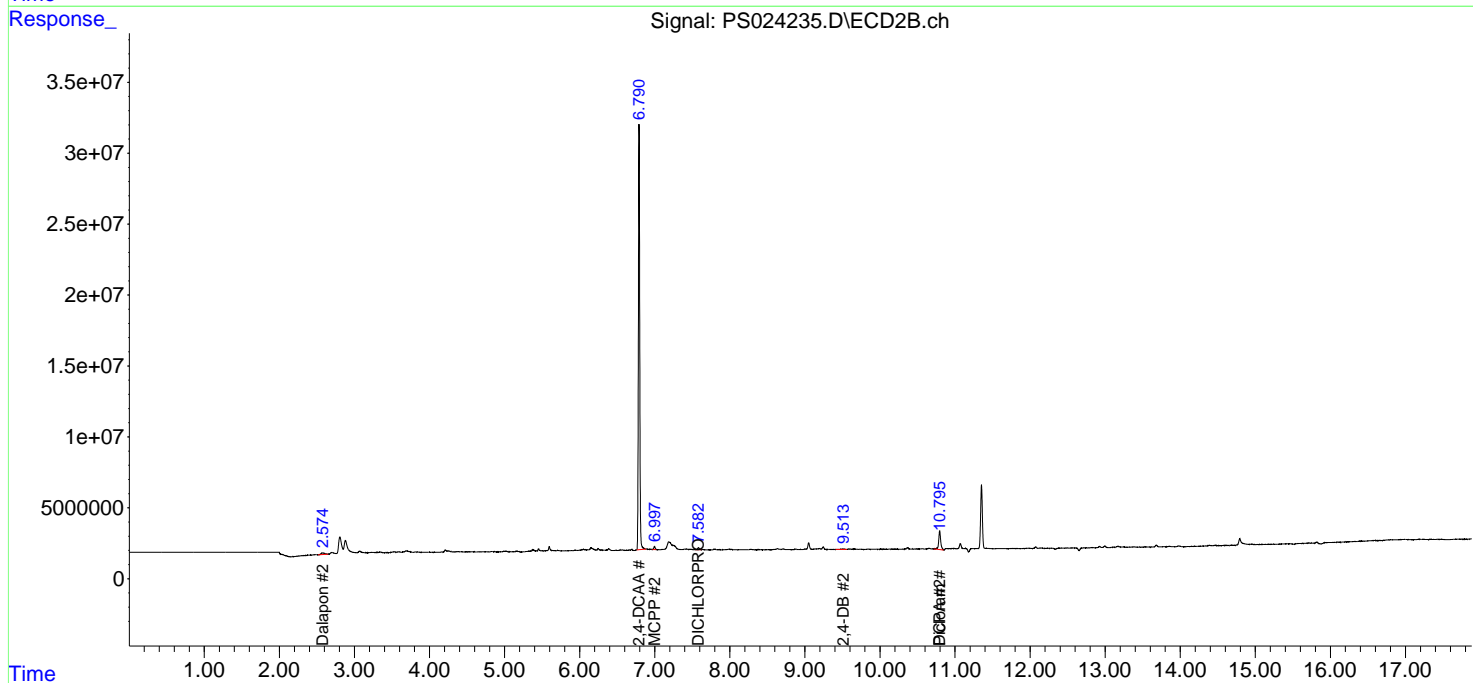
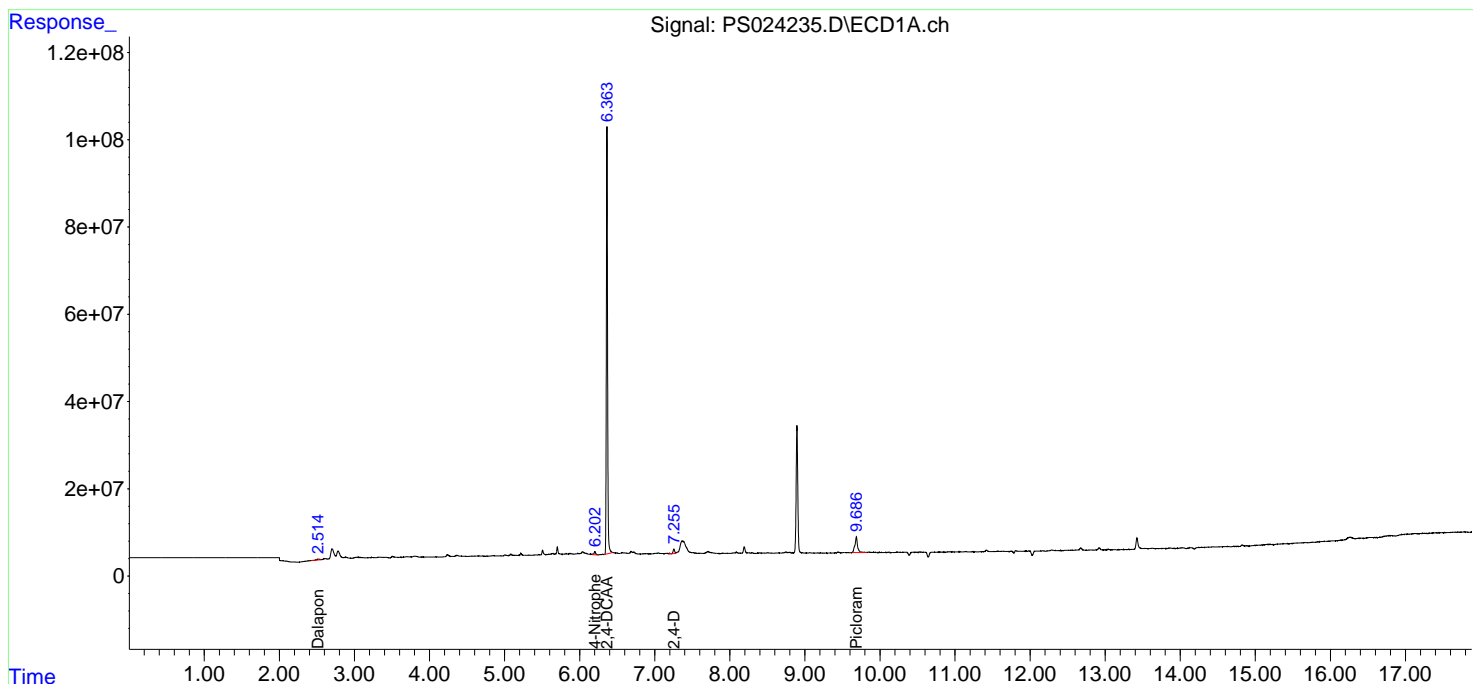
(f)=RT Delta > 1/2 Window (#)=Amounts differ by > 25% (m)=manual int.

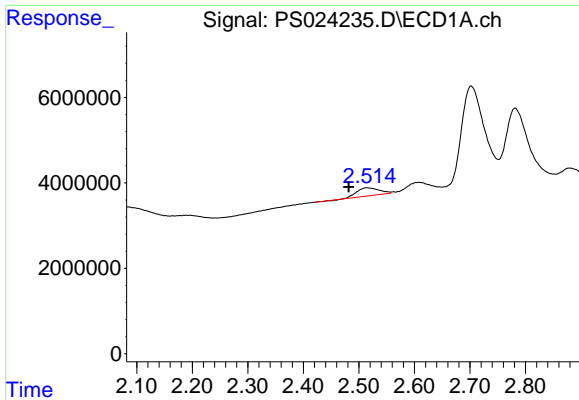
Data Path : Z:\pestpcbsrv\HPCHEM1\ECD_S\Data\PS083123\
 Data File : PS024235.D
 Signal(s) : Signal #1: ECD1A.ch Signal #2: ECD2B.ch
 Acq On : 31 Aug 2023 08:39
 Operator : AR\AJ
 Sample : I.BLK
 Misc :
 ALS Vial : 2 Sample Multiplier: 1

Instrument :
 ECD_S
 ClientSampleId :

Integration File signal 1: autoint1.e
 Integration File signal 2: autoint2.e
 Quant Time: Sep 01 00:37:31 2023
 Quant Method : Z:\pestpcbsrv\HPCHEM1\ECD_S\Method\PS082823.M
 Quant Title : 8080.M
 QLast Update : Mon Aug 28 16:48:10 2023
 Response via : Initial Calibration
 Integrator: ChemStation

Volume Inj. : 2 µl
 Signal #1 Phase : Rtx-CLPesticides Signal #2 Phase: Rtx-CLPesticides2
 Signal #1 Info : 30M x 0.32mm x 0.5 Signal #2 Info : 30M x 0.32mm x 0.25µm

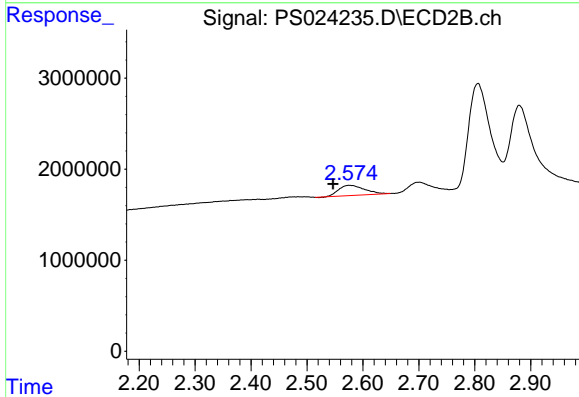




#1 Dalapon

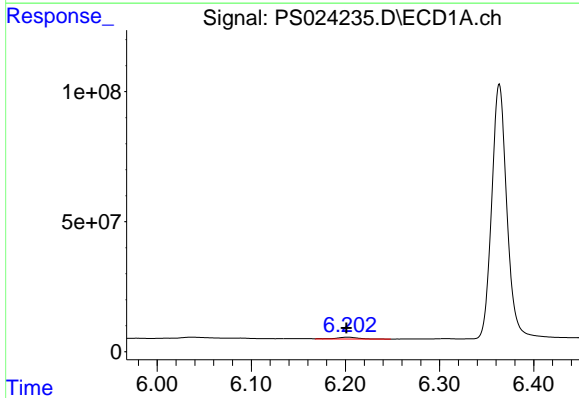
R.T.: 2.514 min
 Delta R.T.: 0.032 min
 Response: 5386087
 Conc: 2.48 ng/ml

Instrument :
 ECD_S
 ClientSampleId :



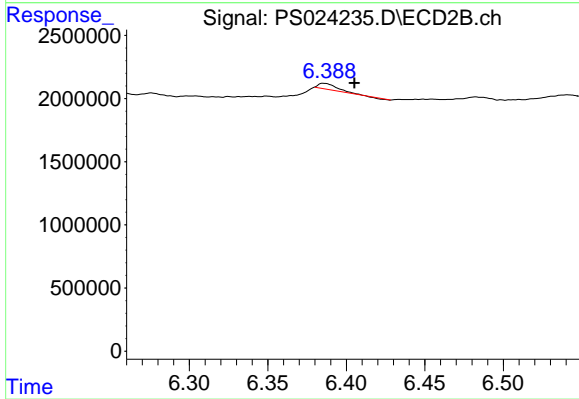
#1 Dalapon

R.T.: 2.574 min
 Delta R.T.: 0.028 min
 Response: 3580687
 Conc: 3.40 ng/ml



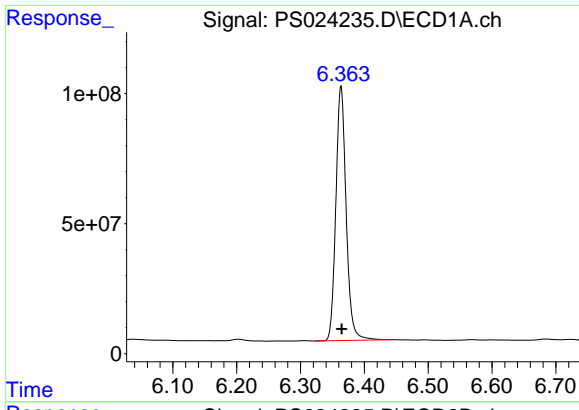
#3 4-Nitrophenol

R.T.: 6.202 min
 Delta R.T.: 0.001 min
 Response: 11403803
 Conc: 9.18 ng/ml



#3 4-Nitrophenol

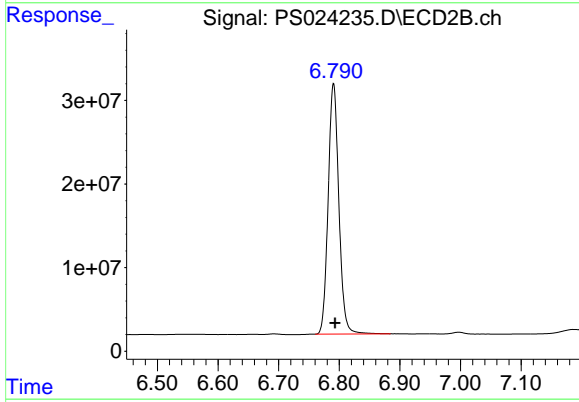
R.T.: 6.386 min
 Delta R.T.: -0.019 min
 Response: 357547
 Conc: N.D.



#4 2,4-DCAA

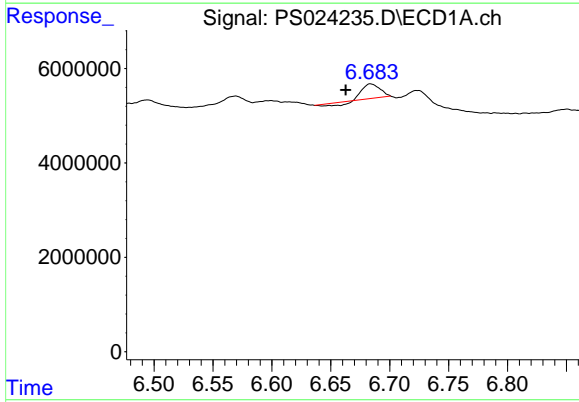
R.T.: 6.364 min
 Delta R.T.: 0.000 min
 Response: 1094956402
 Conc: 549.59 ng/ml

Instrument :
 ECD_S
 ClientSampleId :



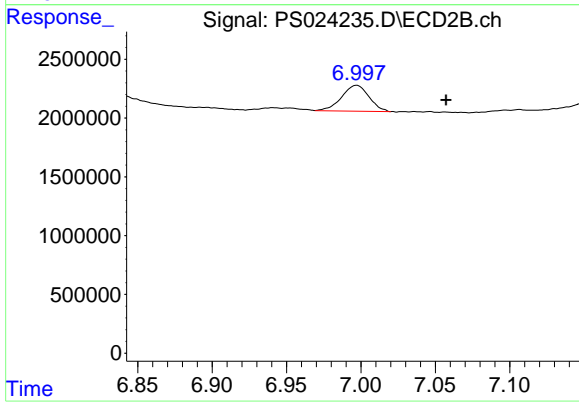
#4 2,4-DCAA

R.T.: 6.791 min
 Delta R.T.: -0.002 min
 Response: 367709908
 Conc: 547.52 ng/ml



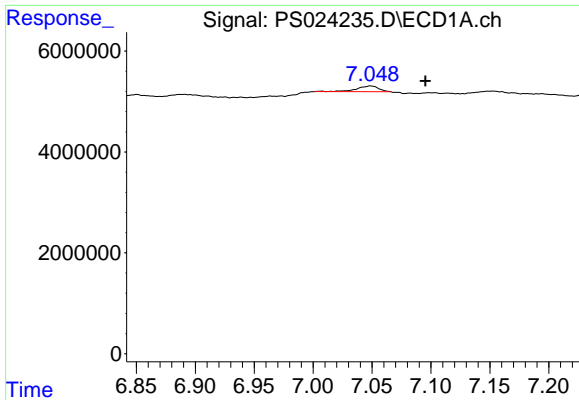
#6 MCPP

R.T.: 6.684 min
 Delta R.T.: 0.021 min
 Response: 2680994
 Conc: N.D.



#6 MCPP

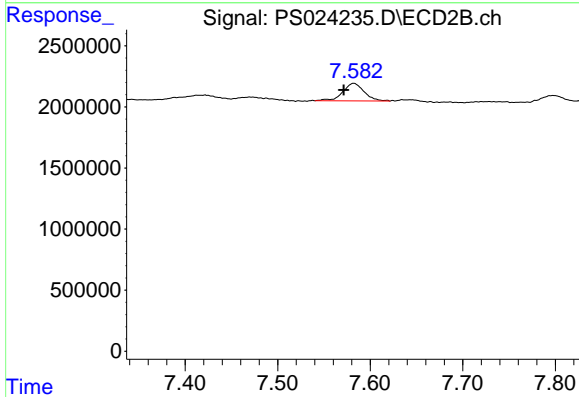
R.T.: 6.997 min
 Delta R.T.: -0.060 min
 Response: 2818036
 Conc: 1.47 ug/ml



#8 DICHLORPROP

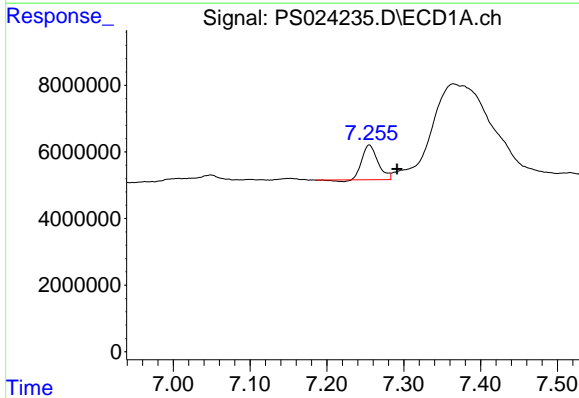
R.T.: 7.049 min
 Delta R.T.: -0.047 min
 Response: 1520082
 Conc: N.D.

Instrument :
 ECD_S
 ClientSampleId :



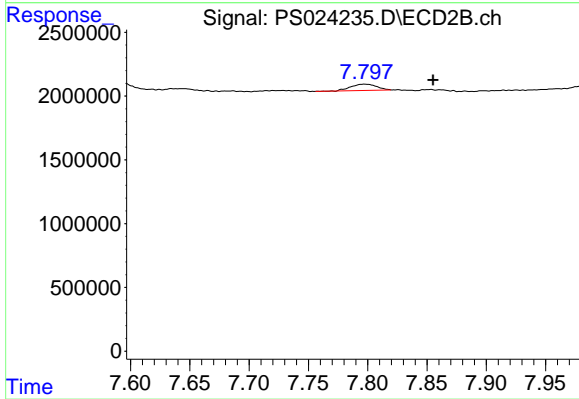
#8 DICHLORPROP

R.T.: 7.582 min
 Delta R.T.: 0.011 min
 Response: 2304100
 Conc: 3.17 ng/ml



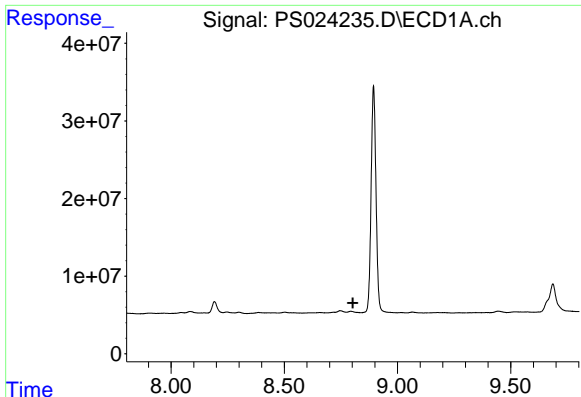
#9 2,4-D

R.T.: 7.255 min
 Delta R.T.: -0.036 min
 Response: 14669617
 Conc: 5.52 ng/ml



#9 2,4-D

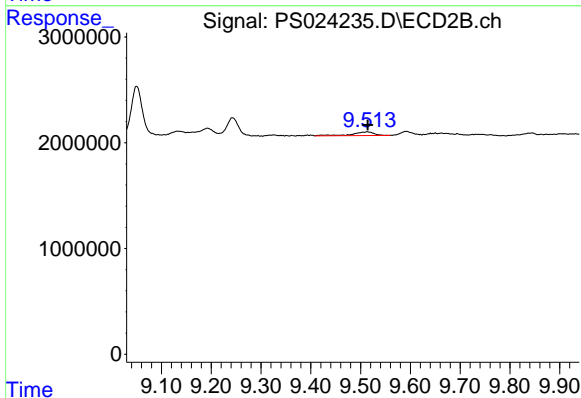
R.T.: 7.798 min
 Delta R.T.: -0.058 min
 Response: 742319
 Conc: N.D.



#13 2,4-DB

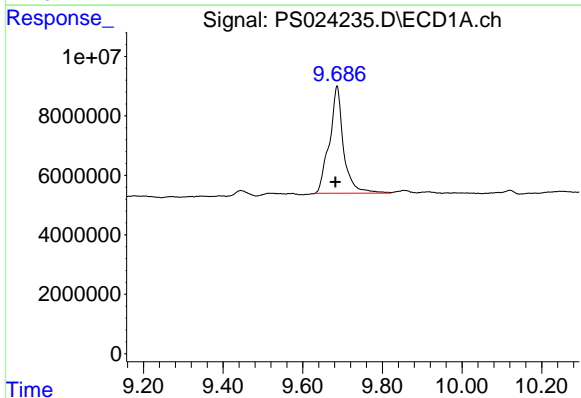
R.T.: 8.794 min
 Delta R.T.: -0.009 min
 Response: -286622
 Conc: N.D.

Instrument :
 ECD_S
 ClientSampleId :



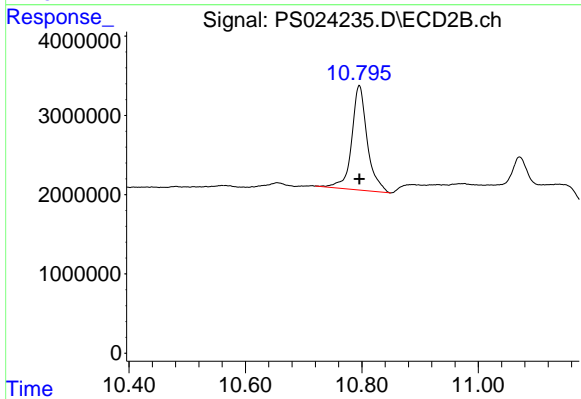
#13 2,4-DB

R.T.: 9.513 min
 Delta R.T.: -0.001 min
 Response: 1000610
 Conc: 2.18 ng/ml



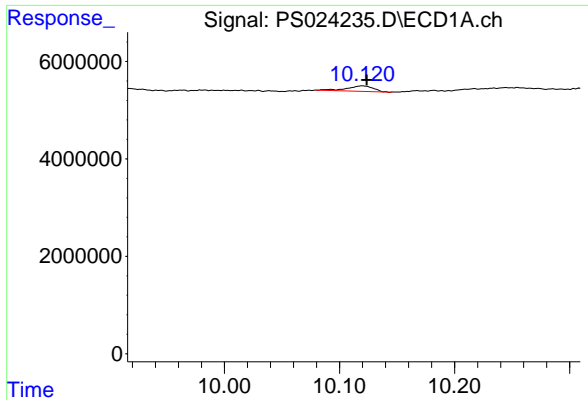
#15 Picloram

R.T.: 9.686 min
 Delta R.T.: 0.004 min
 Response: 88281850
 Conc: 5.41 ng/ml



#15 Picloram

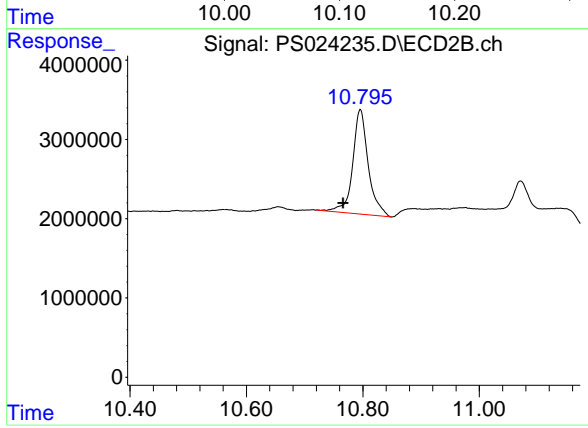
R.T.: 10.796 min
 Delta R.T.: 0.000 min
 Response: 24422120
 Conc: 4.11 ng/ml



#16 DCPA

R.T.: 10.120 min
Delta R.T.: -0.004 min
Response: 1773912
Conc: N.D.

Instrument :
ECD_S
ClientSampleId :



#16 DCPA

R.T.: 10.796 min
Delta R.T.: 0.029 min
Response: 24422120
Conc: 4.76 ng/ml