

Data Path : Z:\pestpcbsrv\HPCHEM1\ECD_S\Data\PS090120\
 Data File : PS012027.D
 Signal(s) : Signal #1: ECD1A.ch Signal #2: ECD2B.ch
 Acq On : 01 Sep 2020 22:49
 Operator : DD\AJ
 Sample : L3828-01
 Misc :
 ALS Vial : 30 Sample Multiplier: 1

Instrument :
 ECD_S
 ClientSampleId :
 WC

Integration File signal 1: autoint1.e
 Integration File signal 2: autoint2.e
 Quant Time: Sep 02 03:54:40 2020
 Quant Method : Z:\pestpcbsrv\HPCHEM1\ECD_S\Method\PS081120.M
 Quant Title : 8080.M
 QLast Update : Tue Aug 11 15:43:16 2020
 Response via : Initial Calibration
 Integrator: ChemStation

Volume Inj. : 2 µl
 Signal #1 Phase : Rtx-CLPesticides Signal #2 Phase: Rtx-CLPesticides2
 Signal #1 Info : 30M x 0.32mm x0.5 Signal #2 Info : 30M x 0.32mm x 0.25µm

	Compound	RT#1	RT#2	Resp#1	Resp#2	ng/ml	ng/ml

System Monitoring Compounds							
4) S	2,4-DCAA	7.217	6.914	209.0E6	130.4E6	191.590	243.816 #
Target Compounds							
1) T	Dalapon	2.999	2.587	39914429	83224722	32.043	110.108 #
2) T	3,5-DICHL...	0.000	6.095	0	78531173	N.D.	95.465
3) T	4-Nitroph...	7.055	6.547	2094803	6578242	3.556	18.042 #
5) T	DICAMBA	7.394	7.048	7329494	8702907	1.789	4.028 #
6) T	MCPP	7.569	0.000	7853931	0	2.458	N.D. #
7) T	MCPA	7.684	7.456	382.9E6	277.3E6	84.174	101.183
8) T	DICHLORPROP	0.000	7.735	0	5506127	N.D.	9.752
9) T	2,4-D	8.397	0.000	143.0E6	0	126.633	N.D. #
10) T	Pentachlo...	8.694	0.000	15272774	0	1.062	N.D. #
11) T	2,4,5-TP ...	0.000	8.784	0	146.6E6	N.D.	50.159
12) T	2,4,5-T	9.410	0.000	40850490	0	6.894	N.D. #

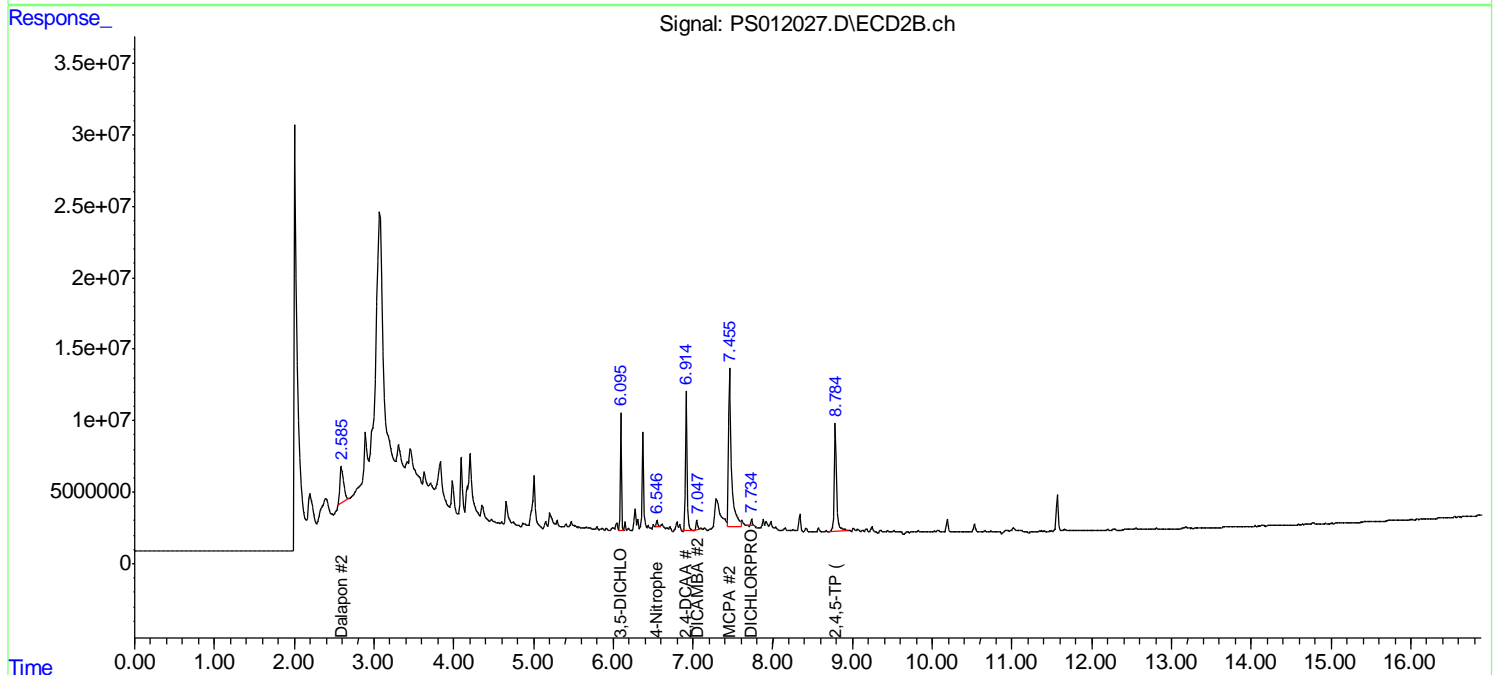
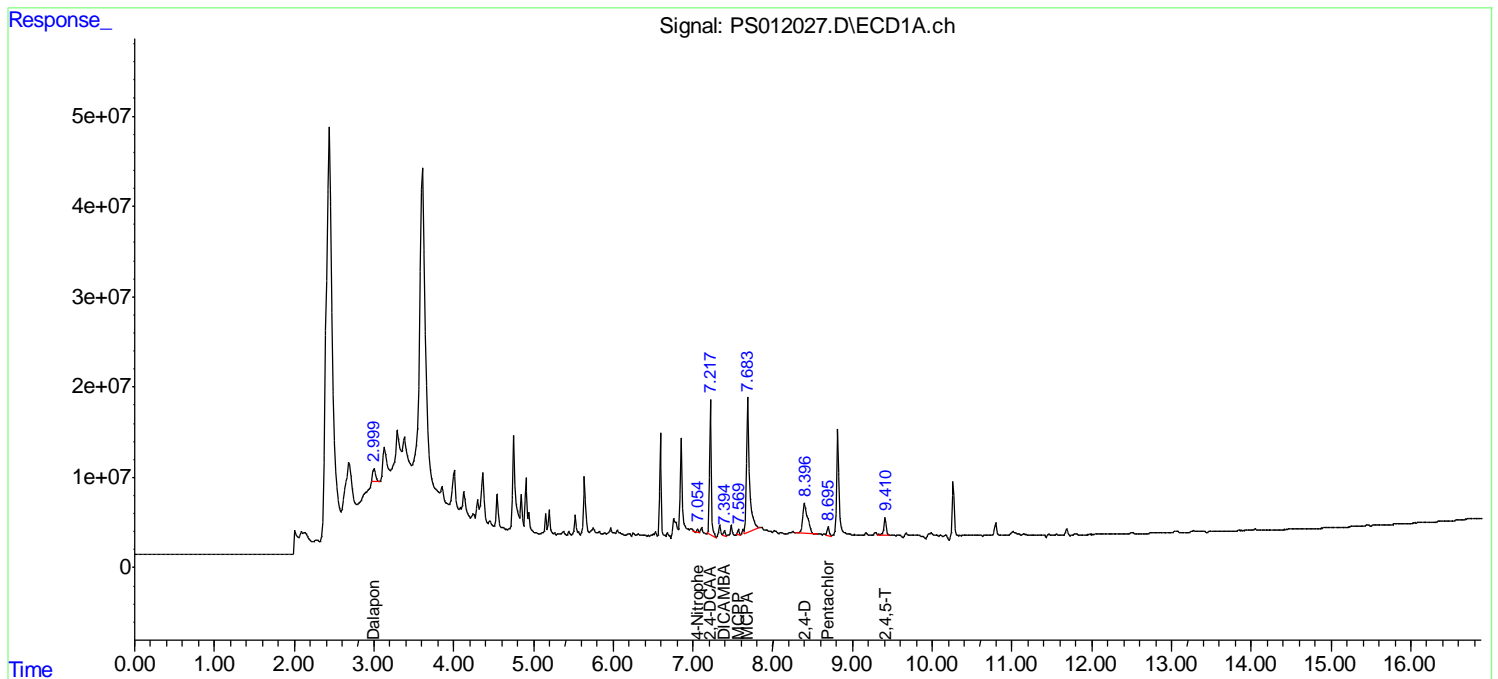
(f)=RT Delta > 1/2 Window (#)=Amounts differ by > 25% (m)=manual int.

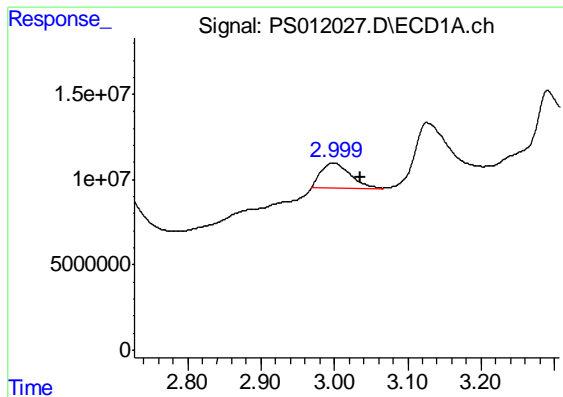
Data Path : Z:\pestpcbsrv\HPCHEM1\ECD_S\Data\PS090120\
 Data File : PS012027.D
 Signal(s) : Signal #1: ECD1A.ch Signal #2: ECD2B.ch
 Acq On : 01 Sep 2020 22:49
 Operator : DD\AJ
 Sample : L3828-01
 Misc :
 ALS Vial : 30 Sample Multiplier: 1

Instrument :
 ECD_S
 ClientSampled :
 WC

Integration File signal 1: autoint1.e
 Integration File signal 2: autoint2.e
 Quant Time: Sep 02 03:54:40 2020
 Quant Method : Z:\pestpcbsrv\HPCHEM1\ECD_S\Method\PS081120.M
 Quant Title : 8080.M
 QLast Update : Tue Aug 11 15:43:16 2020
 Response via : Initial Calibration
 Integrator: ChemStation

Volume Inj. : 2 µl
 Signal #1 Phase : Rtx-CLPesticides Signal #2 Phase: Rtx-CLPesticides2
 Signal #1 Info : 30M x 0.32mm x0.5 Signal #2 Info : 30M x 0.32mm x 0.25µm

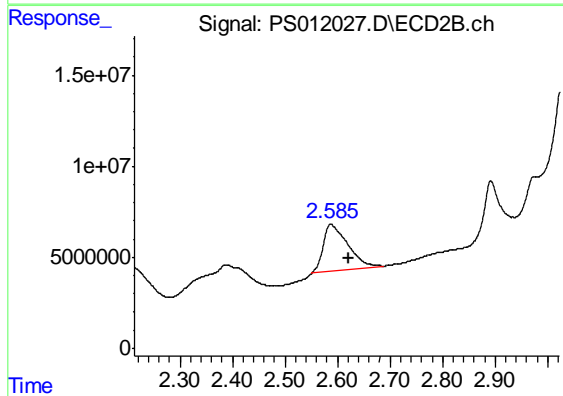




#1 Dalapon

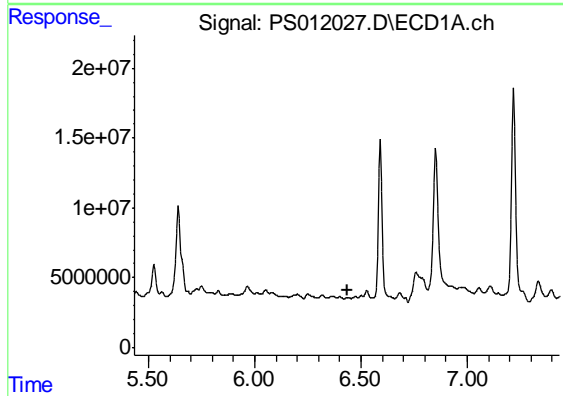
R.T.: 2.999 min
 Delta R.T.: -0.036 min
 Response: 39914429
 Conc: 32.04 ng/ml

Instrument :
 ECD_S
 ClientSampled :
 WC



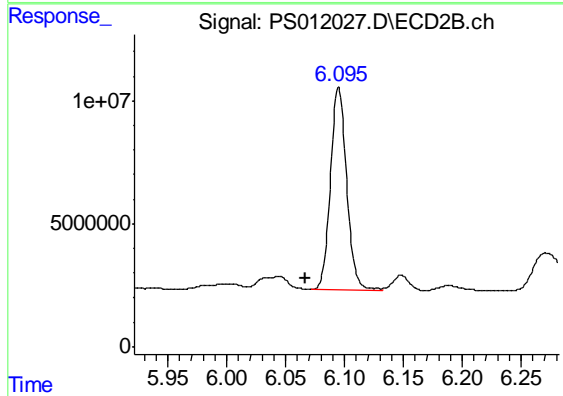
#1 Dalapon

R.T.: 2.587 min
 Delta R.T.: -0.034 min
 Response: 83224722
 Conc: 110.11 ng/ml



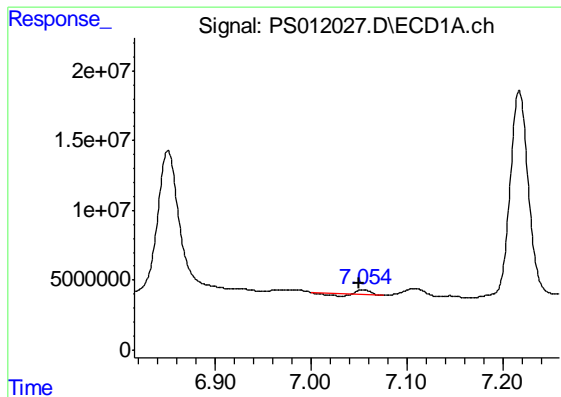
#2 3,5-DICHLOROBENZOIC ACID

R.T.: 0.000 min
 Exp R.T. : 6.434 min
 Response: 0
 Conc: N.D.



#2 3,5-DICHLOROBENZOIC ACID

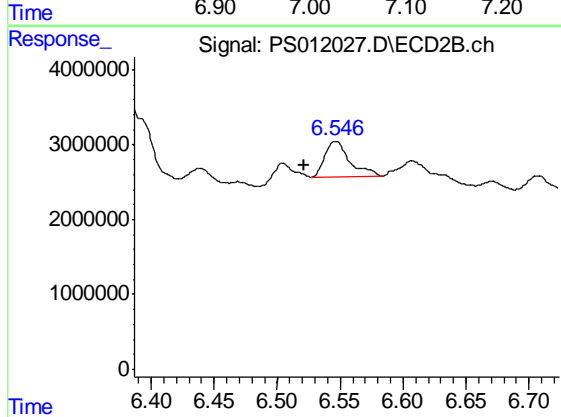
R.T.: 6.095 min
 Delta R.T.: 0.029 min
 Response: 78531173
 Conc: 95.46 ng/ml



#3 4-Nitrophenol

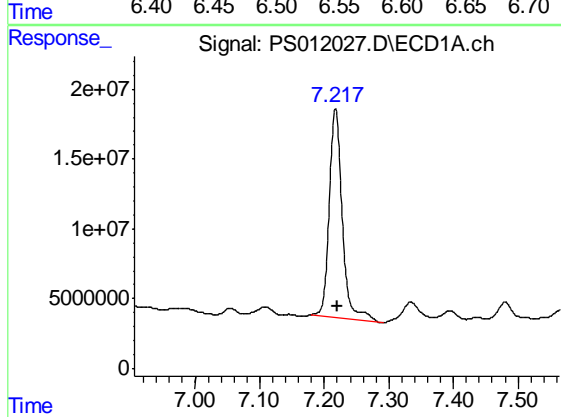
R.T.: 7.055 min
 Delta R.T.: 0.004 min
 Response: 2094803
 Conc: 3.56 ng/ml

Instrument :
 ECD_S
 ClientSampled :
 WC



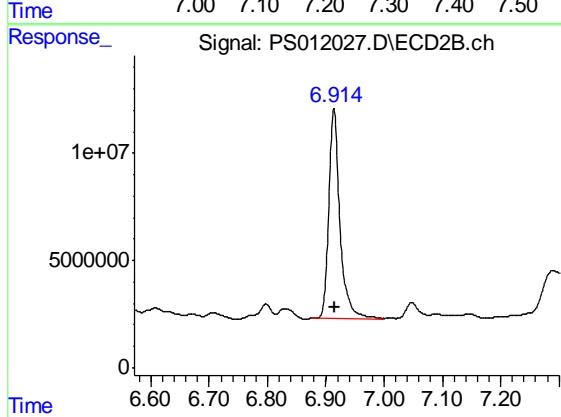
#3 4-Nitrophenol

R.T.: 6.547 min
 Delta R.T.: 0.025 min
 Response: 6578242
 Conc: 18.04 ng/ml



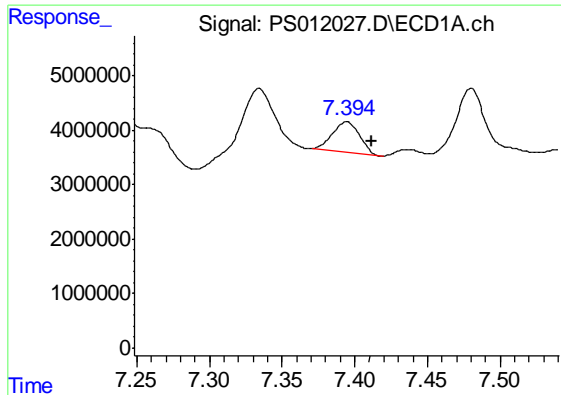
#4 2,4-DCAA

R.T.: 7.217 min
 Delta R.T.: -0.003 min
 Response: 208980516
 Conc: 191.59 ng/ml



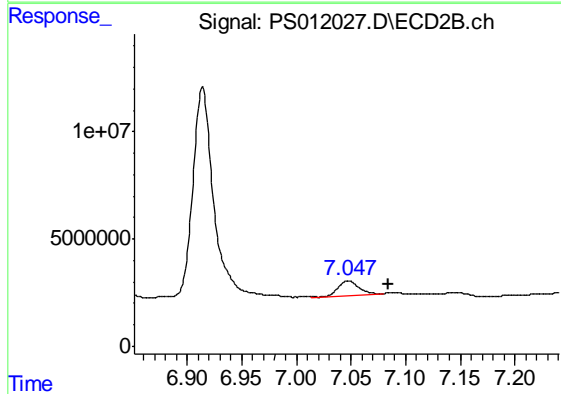
#4 2,4-DCAA

R.T.: 6.914 min
 Delta R.T.: -0.001 min
 Response: 130389728
 Conc: 243.82 ng/ml

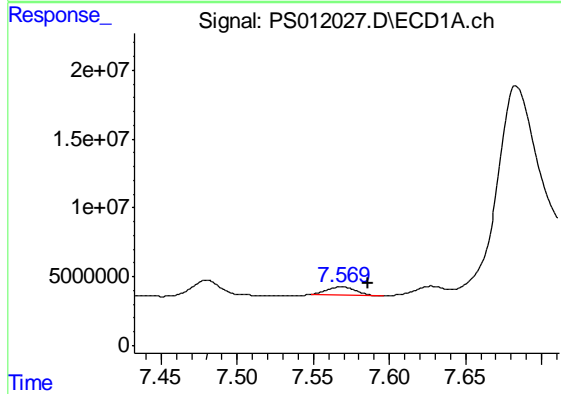


#5 DICAMBA
 R.T.: 7.394 min
 Delta R.T.: -0.017 min
 Response: 7329494
 Conc: 1.79 ng/ml

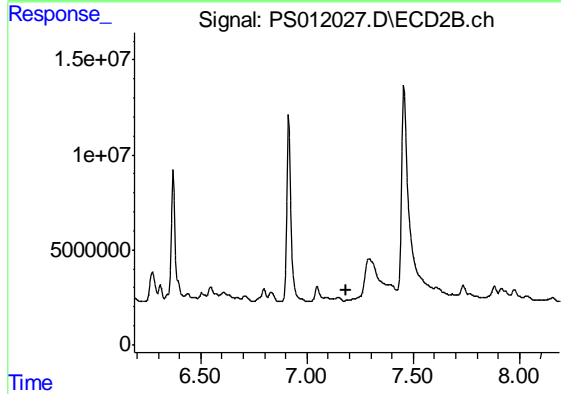
Instrument :
 ECD_S
 ClientSampled :
 WC



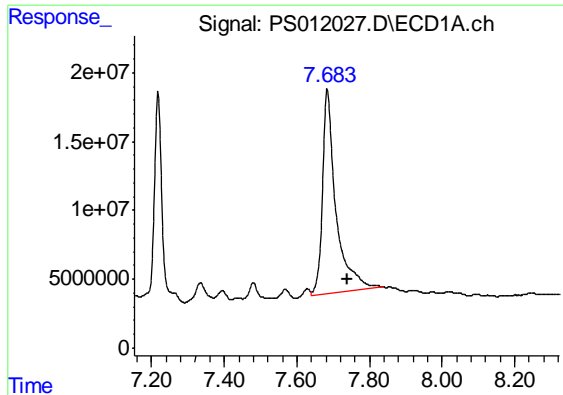
#5 DICAMBA
 R.T.: 7.048 min
 Delta R.T.: -0.037 min
 Response: 8702907
 Conc: 4.03 ng/ml



#6 MCPP
 R.T.: 7.569 min
 Delta R.T.: -0.017 min
 Response: 7853931
 Conc: 2.46 ug/ml



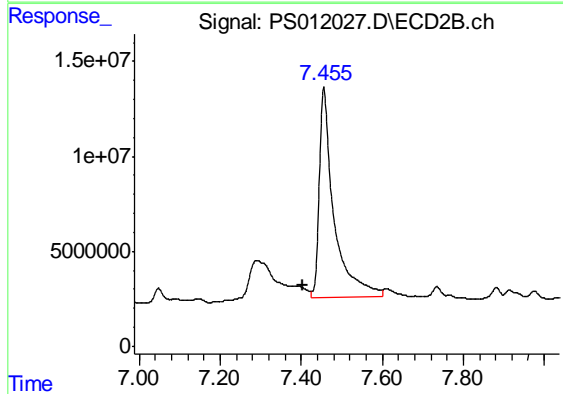
#6 MCPP
 R.T.: 0.000 min
 Exp R.T. : 7.188 min
 Response: 0
 Conc: N.D.



#7 MCPA

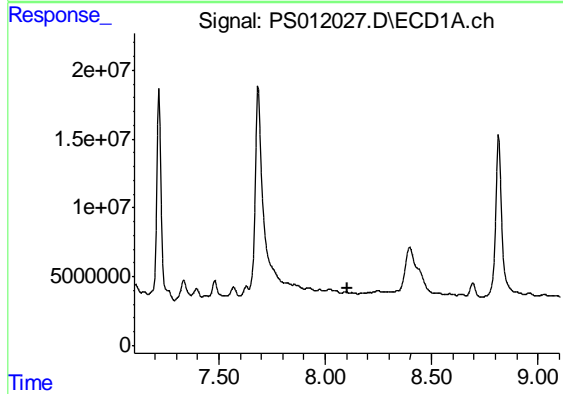
R.T.: 7.684 min
 Delta R.T.: -0.054 min
 Response: 382866278
 Conc: 84.17 ug/ml

Instrument :
 ECD_S
 ClientSampled :
 WC



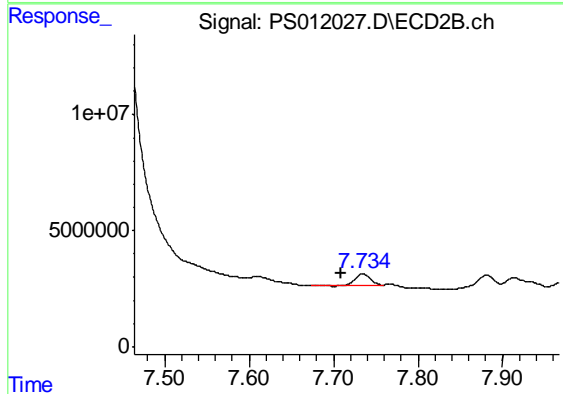
#7 MCPA

R.T.: 7.456 min
 Delta R.T.: 0.051 min
 Response: 277256716
 Conc: 101.18 ug/ml



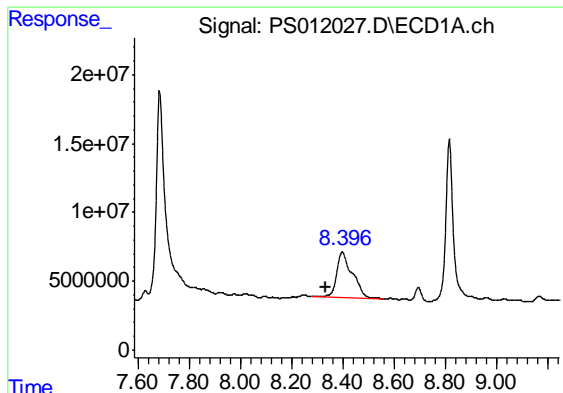
#8 DICHLORPROP

R.T.: 0.000 min
 Exp R.T. : 8.102 min
 Response: 0
 Conc: N.D.



#8 DICHLORPROP

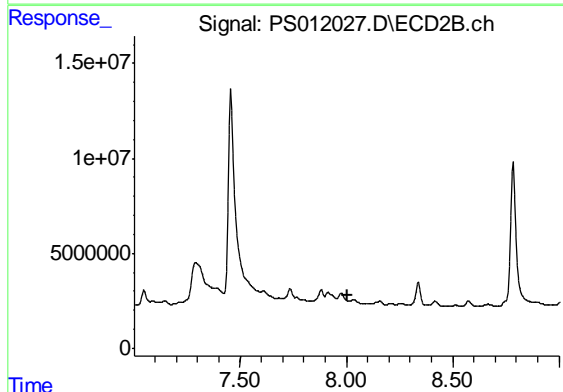
R.T.: 7.735 min
 Delta R.T.: 0.025 min
 Response: 5506127
 Conc: 9.75 ng/ml



#9 2,4-D

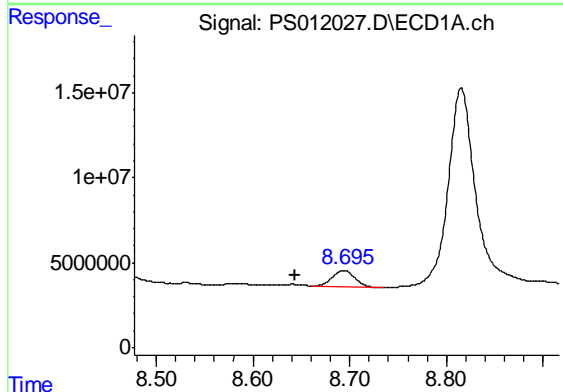
R.T.: 8.397 min
 Delta R.T.: 0.065 min
 Response: 142980270
 Conc: 126.63 ng/ml

Instrument :
 ECD_S
 ClientSampled :
 WC



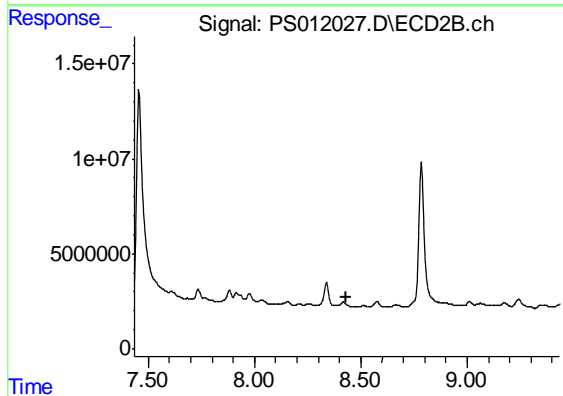
#9 2,4-D

R.T.: 0.000 min
 Exp R.T. : 8.003 min
 Response: 0
 Conc: N.D.



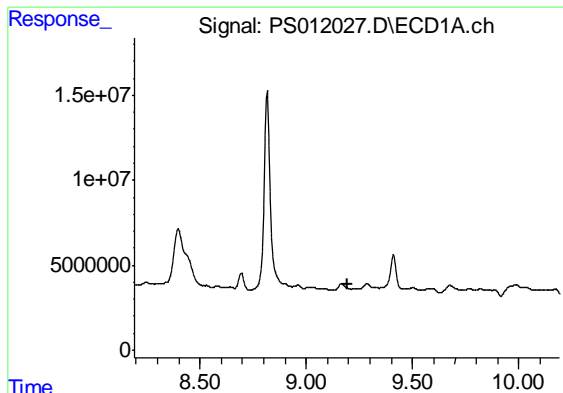
#10 Pentachlorophenol

R.T.: 8.694 min
 Delta R.T.: 0.051 min
 Response: 15272774
 Conc: 1.06 ng/ml



#10 Pentachlorophenol

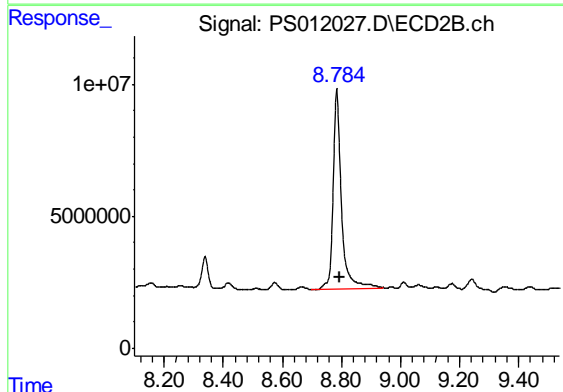
R.T.: 0.000 min
 Exp R.T. : 8.434 min
 Response: 0
 Conc: N.D.



#11 2,4,5-TP (SILVEX)

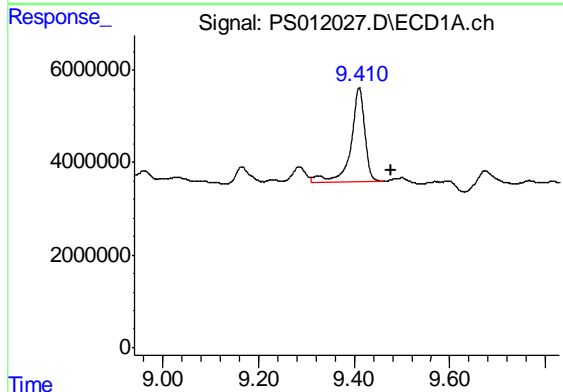
R.T.: 0.000 min
 Exp R.T. : 9.191 min
 Response: 0
 Conc: N.D.

Instrument :
 ECD_S
 ClientSampled :
 WC



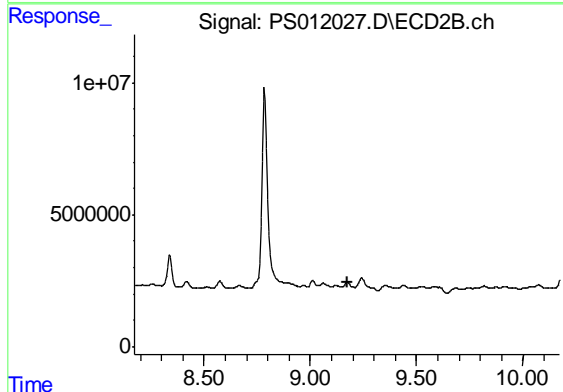
#11 2,4,5-TP (SILVEX)

R.T.: 8.784 min
 Delta R.T.: -0.009 min
 Response: 146647225
 Conc: 50.16 ng/ml



#12 2,4,5-T

R.T.: 9.410 min
 Delta R.T.: -0.066 min
 Response: 40850490
 Conc: 6.89 ng/ml



#12 2,4,5-T

R.T.: 0.000 min
 Exp R.T. : 9.172 min
 Response: 0
 Conc: N.D.