

Data Path : Z:\pestpcbsrv\HPCHEM1\ECD_S\Data\PS090221\
 Data File : PS016748.D
 Signal(s) : Signal #1: ECD1A.ch Signal #2: ECD2B.ch
 Acq On : 02 Sep 2021 15:45
 Operator : DD\AJ
 Sample : M3597-03
 Misc :
 ALS Vial : 17 Sample Multiplier: 1

Instrument :
 ECD_S
 ClientSampleId :
 RO-PSC124042

Integration File signal 1: autoint1.e
 Integration File signal 2: autoint2.e
 Quant Time: Sep 02 16:48:26 2021
 Quant Method : Z:\pestpcbsrv\HPCHEM1\ECD_S\Method\PS083121.M
 Quant Title : 8080.M
 QLast Update : Wed Sep 01 10:13:14 2021
 Response via : Initial Calibration
 Integrator: ChemStation

Volume Inj. : 2 µl
 Signal #1 Phase : Rtx-CLPesticides Signal #2 Phase: Rtx-CLPesticides2
 Signal #1 Info : 30M x 0.32mm x0.5 Signal #2 Info : 30M x 0.32mm x 0.25µm

	Compound	RT#1	RT#2	Resp#1	Resp#2	ng/ml	ng/ml

System Monitoring Compounds							
4) S	2,4-DCAA	7.180	6.762	500.4E6	228.5E6	333.192	440.740 #
Target Compounds							
1) T	Dalapon	2.977	2.502	90546785	58631468	40.186	87.213 #
2) T	3,5-DICHL...	6.340f	5.979	3528322	20612005	1.657	25.952 #
3) T	4-Nitroph...	7.069f	0.000	8976106	0	11.608	N.D. #
5) T	DICAMBA	7.381	0.000	6945362	0	1.220	N.D. #
6) T	MCP P	7.535	0.000	5343559	0	1.267	N.D. #
7) T	MCPA	7.669	7.216	11332276	16116725	1.934	6.016 #
8) T	DICHLORPROP	8.010f	7.564	464926	8448245	<MDL	15.521 #
9) T	2,4-D	8.272	7.819	3723633	6061524	2.458	9.652 #
10) T	Pentachlo...	8.600	8.261	79088538	54217711	4.050	7.267 #
11) T	2,4,5-TP ...	9.211f	8.656	33624555	71274730	4.683	24.245 #
12) T	2,4,5-T	9.380f	0.000	97897480	0	13.681	N.D. #
13) T	2,4-DB	9.961	9.521	58216889	12877098	42.122	35.276
14) T	DINOSEB	11.107	9.842	394.4E6	25164467	72.329	12.001 #
15) T	Picloram	10.935	10.832	1043.7E6	48866306	117.125	13.336 #
16) T	DCPA	11.436	10.832f	-19197060	48866306	N.D.	11.263

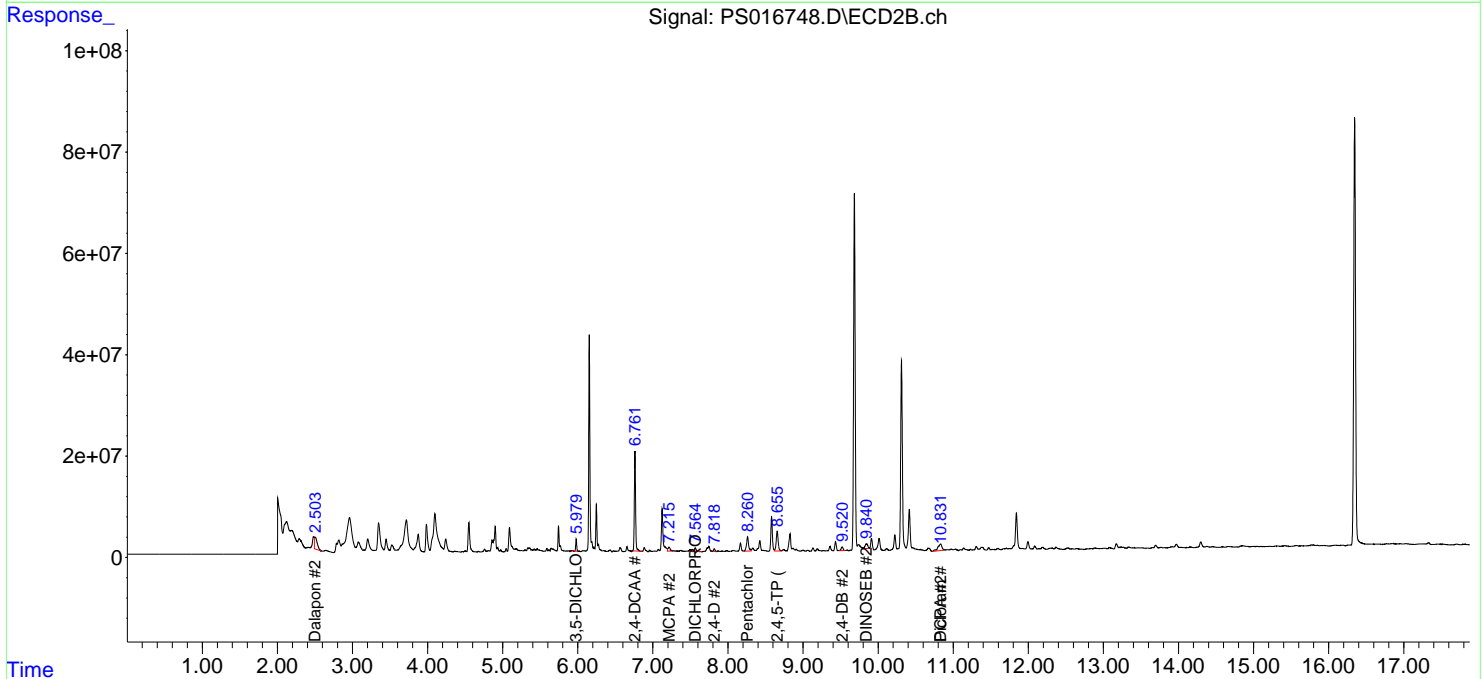
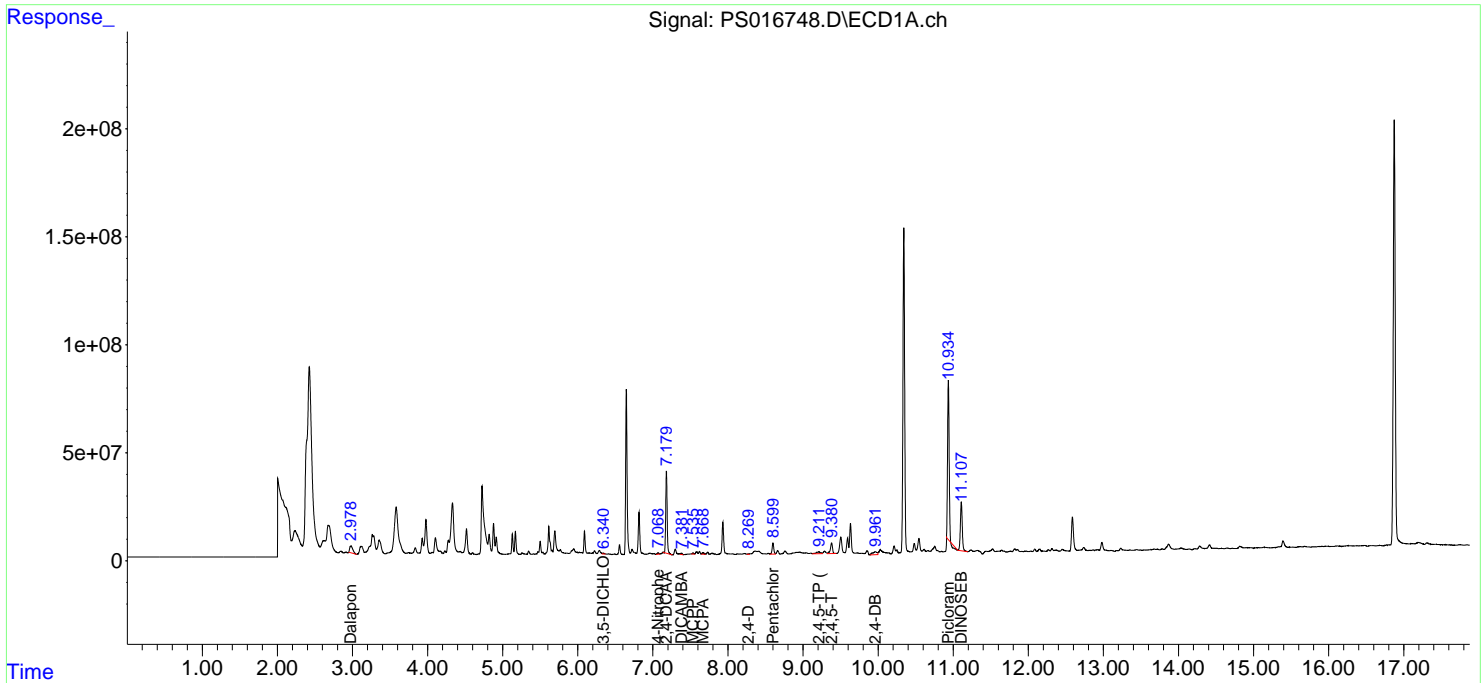
(f)=RT Delta > 1/2 Window (#)=Amounts differ by > 25% (m)=manual int.

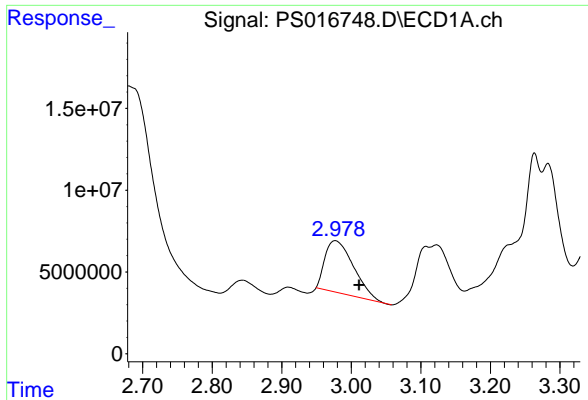
Data Path : Z:\pestpcbsrv\HPCHEM1\ECD_S\Data\PS090221\
 Data File : PS016748.D
 Signal(s) : Signal #1: ECD1A.ch Signal #2: ECD2B.ch
 Acq On : 02 Sep 2021 15:45
 Operator : DD\AJ
 Sample : M3597-03
 Misc :
 ALS Vial : 17 Sample Multiplier: 1

Instrument :
 ECD_S
 ClientSampled :
 RO-PSC124042

Integration File signal 1: autoint1.e
 Integration File signal 2: autoint2.e
 Quant Time: Sep 02 16:48:26 2021
 Quant Method : Z:\pestpcbsrv\HPCHEM1\ECD_S\Method\PS083121.M
 Quant Title : 8080.M
 QLast Update : Wed Sep 01 10:13:14 2021
 Response via : Initial Calibration
 Integrator: ChemStation

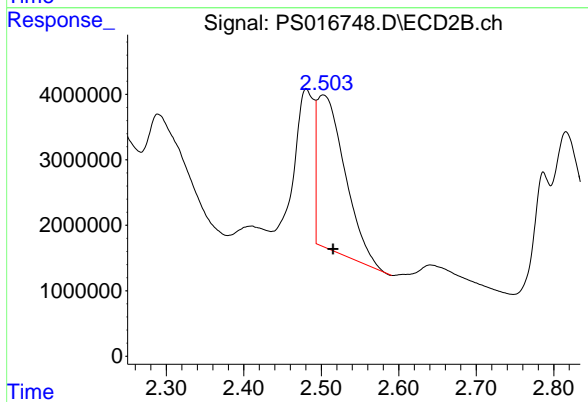
Volume Inj. : 2 µl
 Signal #1 Phase : Rtx-CLPesticides Signal #2 Phase: Rtx-CLPesticides2
 Signal #1 Info : 30M x 0.32mm x0.5 Signal #2 Info : 30M x 0.32mm x 0.25µm



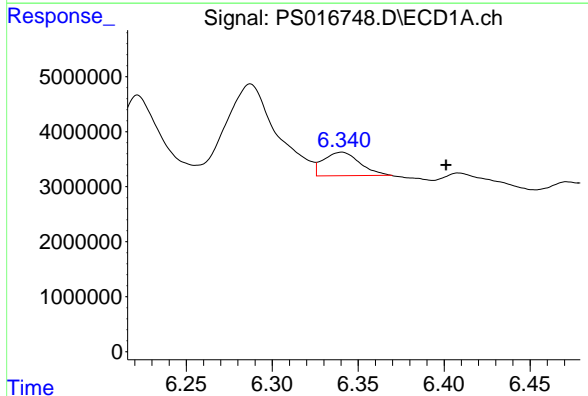


#1 Dalapon
 R.T.: 2.977 min
 Delta R.T.: -0.034 min
 Response: 90546785
 Conc: 40.19 ng/ml

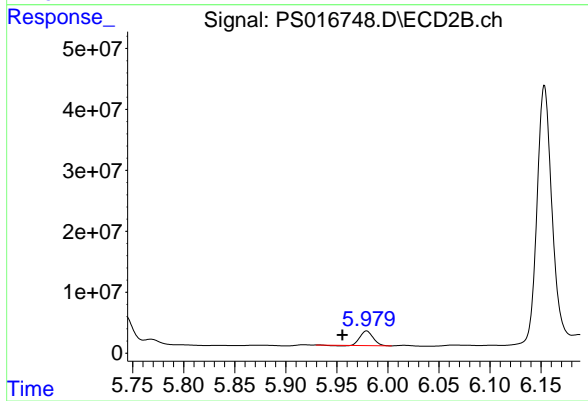
Instrument :
 ECD_S
 ClientSampleId :
 RO-PSC124042



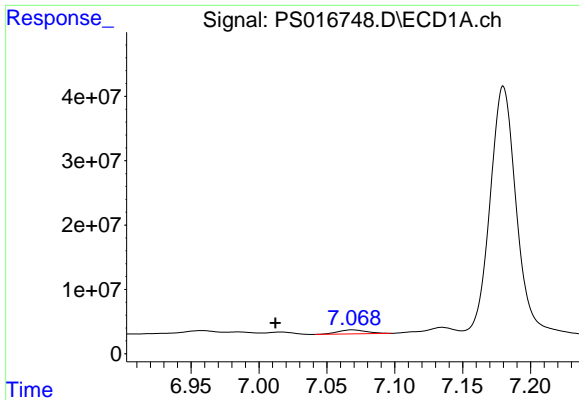
#1 Dalapon
 R.T.: 2.502 min
 Delta R.T.: -0.013 min
 Response: 58631468
 Conc: 87.21 ng/ml



#2 3,5-DICHLOROBENZOIC ACID
 R.T.: 6.340 min
 Delta R.T.: -0.061 min
 Response: 3528322
 Conc: 1.66 ng/ml

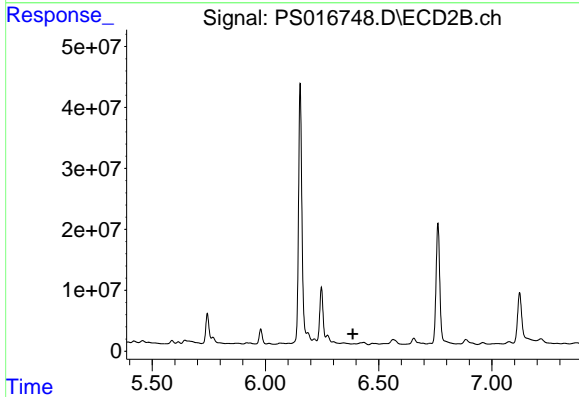


#2 3,5-DICHLOROBENZOIC ACID
 R.T.: 5.979 min
 Delta R.T.: 0.024 min
 Response: 20612005
 Conc: 25.95 ng/ml

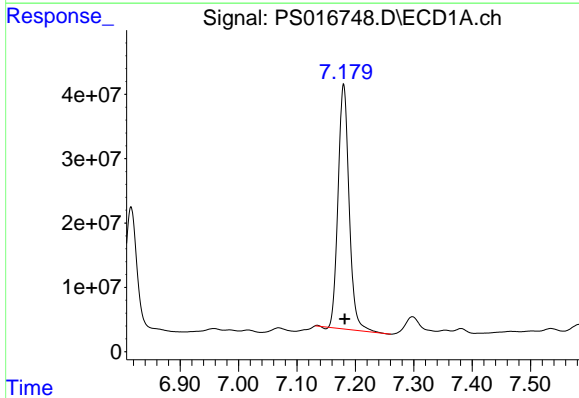


#3 4-Nitrophenol
 R.T.: 7.069 min
 Delta R.T.: 0.057 min
 Response: 8976106
 Conc: 11.61 ng/ml

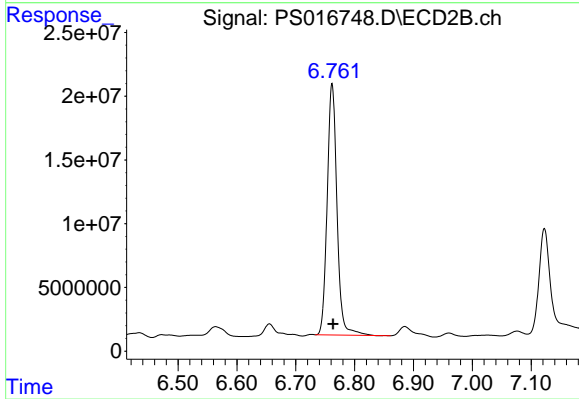
Instrument :
 ECD_S
 ClientSampleId :
 RO-PSC124042



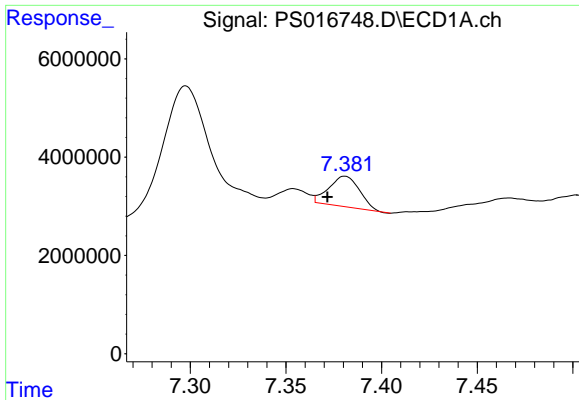
#3 4-Nitrophenol
 R.T.: 0.000 min
 Exp R.T. : 6.386 min
 Response: 0
 Conc: N.D.



#4 2,4-DCAA
 R.T.: 7.180 min
 Delta R.T.: -0.002 min
 Response: 500408575
 Conc: 333.19 ng/ml

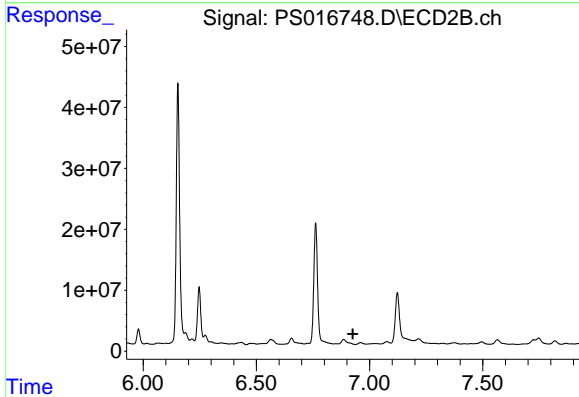


#4 2,4-DCAA
 R.T.: 6.762 min
 Delta R.T.: -0.002 min
 Response: 228451562
 Conc: 440.74 ng/ml

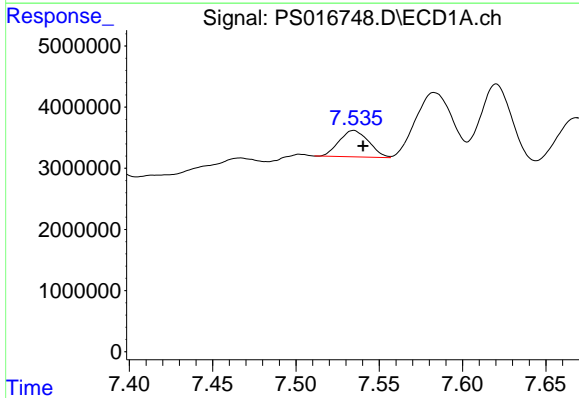


#5 DICAMBA
 R.T.: 7.381 min
 Delta R.T.: 0.009 min
 Response: 6945362
 Conc: 1.22 ng/ml

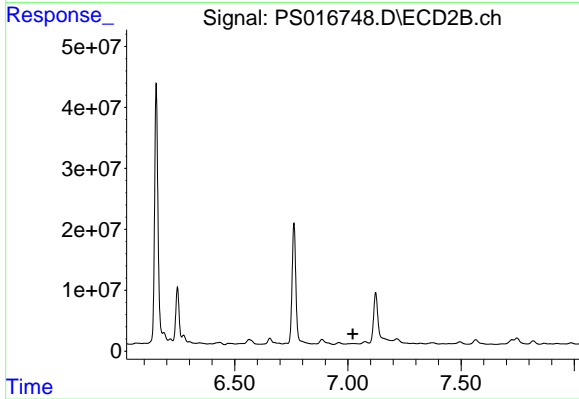
Instrument :
 ECD_S
 ClientSampleId :
 RO-PSC124042



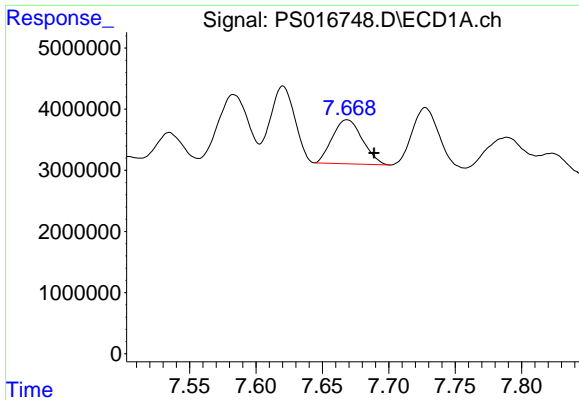
#5 DICAMBA
 R.T.: 0.000 min
 Exp R.T. : 6.926 min
 Response: 0
 Conc: N.D.



#6 MCP
 R.T.: 7.535 min
 Delta R.T.: -0.006 min
 Response: 5343559
 Conc: 1.27 ug/ml

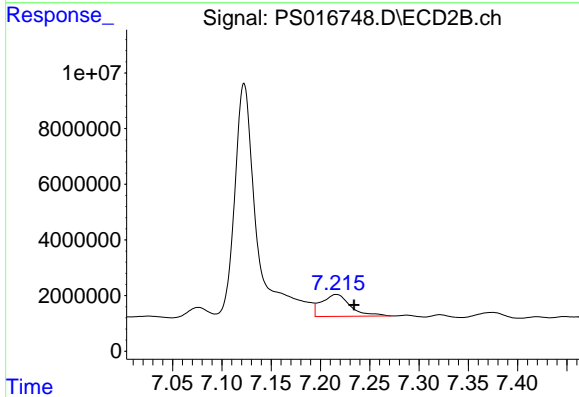


#6 MCP
 R.T.: 0.000 min
 Exp R.T. : 7.022 min
 Response: 0
 Conc: N.D.

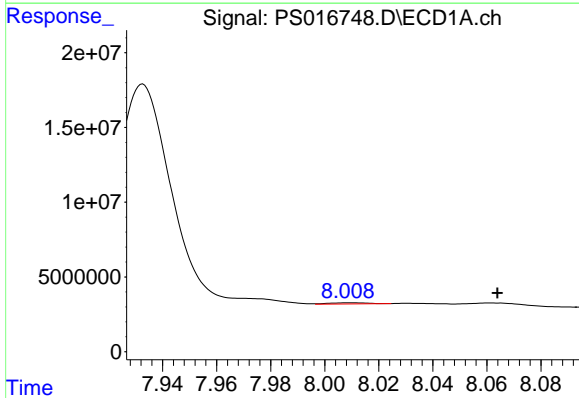


#7 MCPA
 R.T.: 7.669 min
 Delta R.T.: -0.020 min
 Response: 11332276
 Conc: 1.93 ug/ml

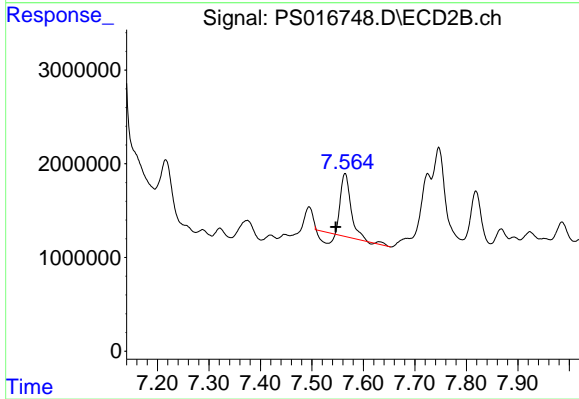
Instrument :
 ECD_S
 ClientSampleId :
 RO-PSC124042



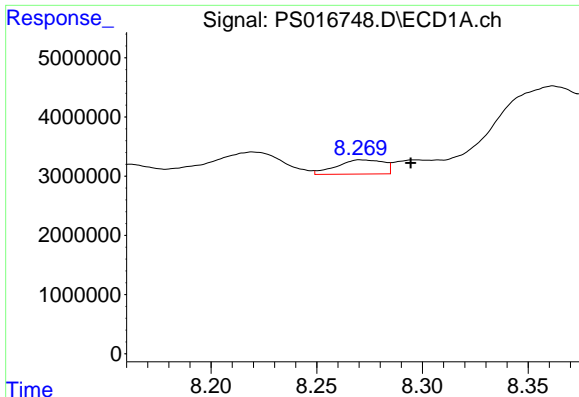
#7 MCPA
 R.T.: 7.216 min
 Delta R.T.: -0.018 min
 Response: 16116725
 Conc: 6.02 ug/ml



#8 DICHLORPROP
 R.T.: 8.010 min
 Delta R.T.: -0.054 min
 Response: 464926
 Conc: N.D.



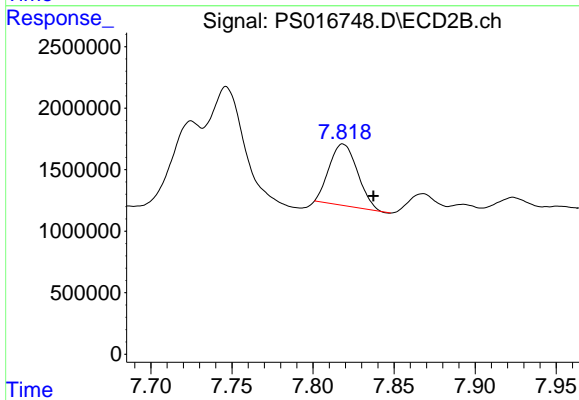
#8 DICHLORPROP
 R.T.: 7.564 min
 Delta R.T.: 0.018 min
 Response: 8448245
 Conc: 15.52 ng/ml



#9 2,4-D

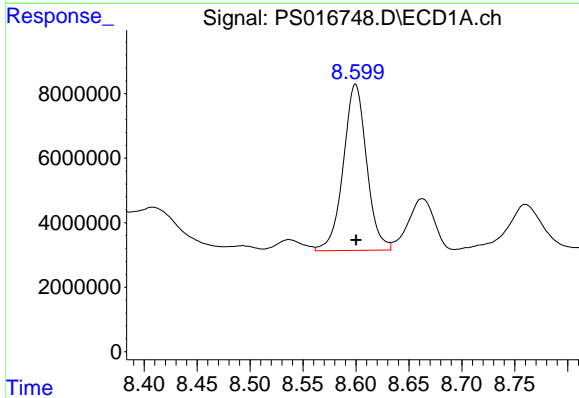
R.T.: 8.272 min
 Delta R.T.: -0.022 min
 Response: 3723633
 Conc: 2.46 ng/ml

Instrument :
 ECD_S
 ClientSampleId :
 RO-PSC124042



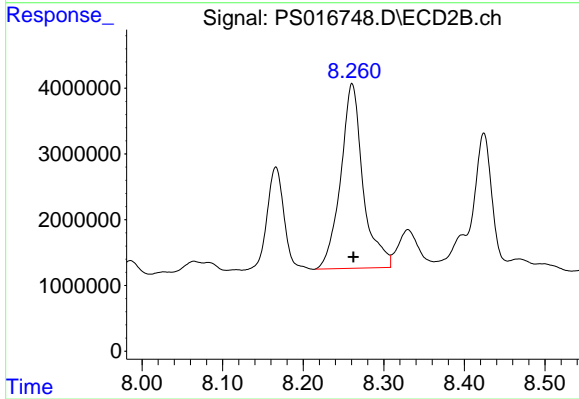
#9 2,4-D

R.T.: 7.819 min
 Delta R.T.: -0.019 min
 Response: 6061524
 Conc: 9.65 ng/ml



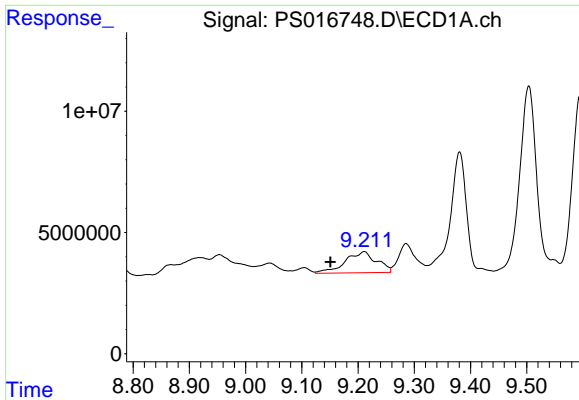
#10 Pentachlorophenol

R.T.: 8.600 min
 Delta R.T.: 0.000 min
 Response: 79088538
 Conc: 4.05 ng/ml



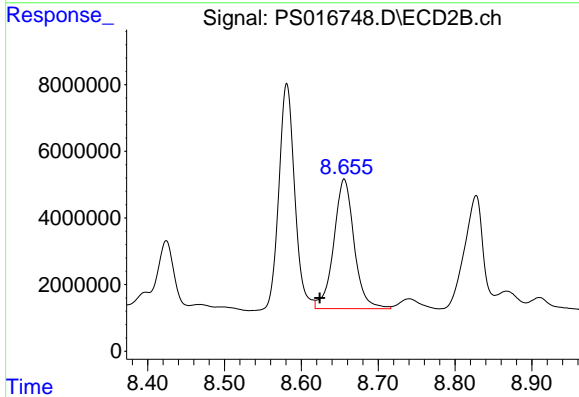
#10 Pentachlorophenol

R.T.: 8.261 min
 Delta R.T.: -0.002 min
 Response: 54217711
 Conc: 7.27 ng/ml

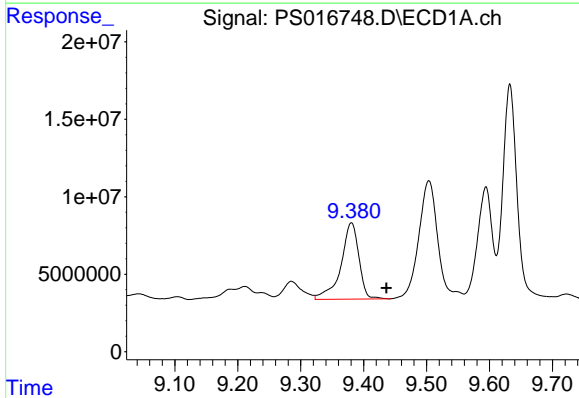


#11 2,4,5-TP (SILVEX)
 R.T.: 9.211 min
 Delta R.T.: 0.060 min
 Response: 33624555
 Conc: 4.68 ng/ml

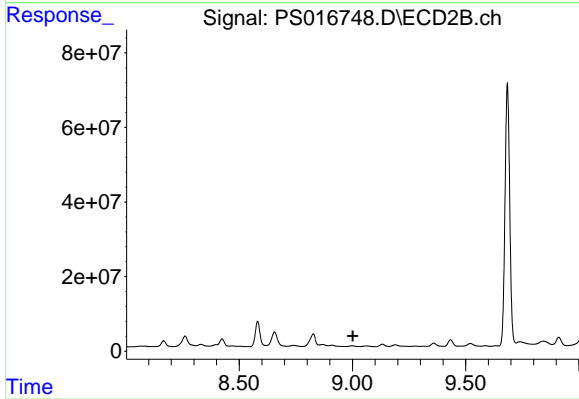
Instrument :
 ECD_S
 ClientSampleId :
 RO-PSC124042



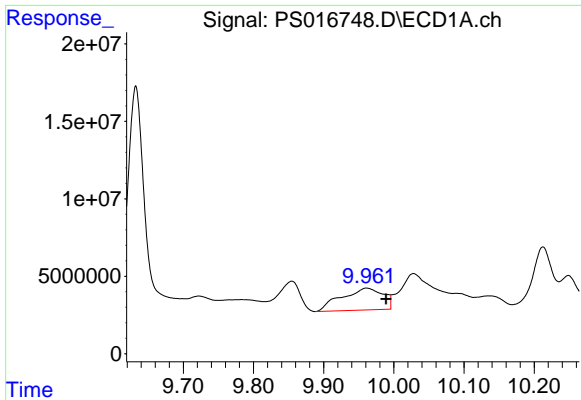
#11 2,4,5-TP (SILVEX)
 R.T.: 8.656 min
 Delta R.T.: 0.032 min
 Response: 71274730
 Conc: 24.25 ng/ml



#12 2,4,5-T
 R.T.: 9.380 min
 Delta R.T.: -0.056 min
 Response: 97897480
 Conc: 13.68 ng/ml



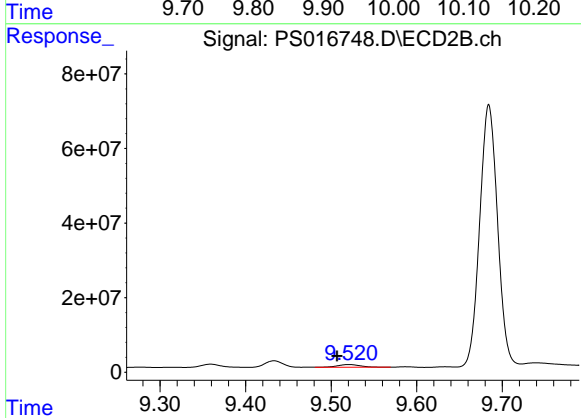
#12 2,4,5-T
 R.T.: 0.000 min
 Exp R.T. : 9.002 min
 Response: 0
 Conc: N.D.



#13 2,4-DB

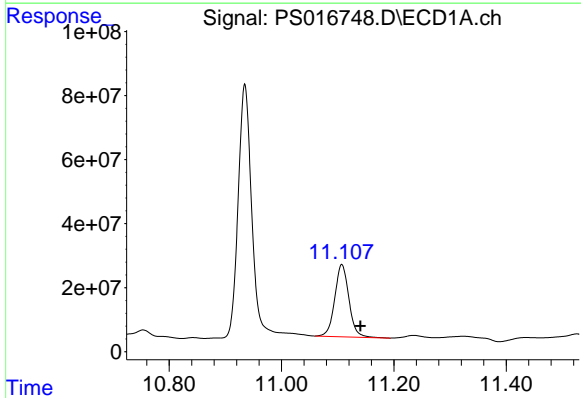
R.T.: 9.961 min
 Delta R.T.: -0.027 min
 Response: 58216889
 Conc: 42.12 ng/ml

Instrument :
 ECD_S
 ClientSampleId :
 RO-PSC124042



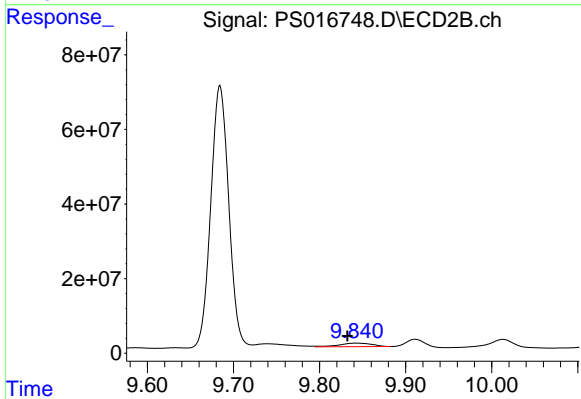
#13 2,4-DB

R.T.: 9.521 min
 Delta R.T.: 0.014 min
 Response: 12877098
 Conc: 35.28 ng/ml



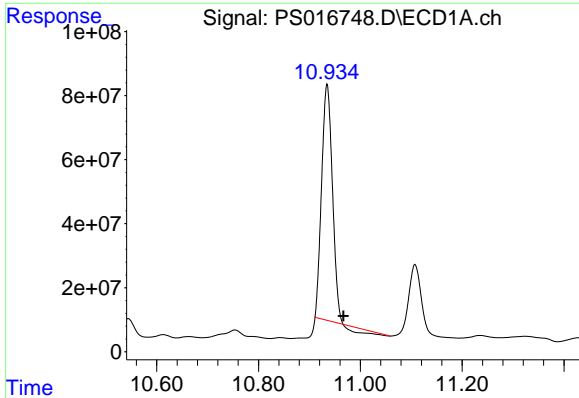
#14 DINOSEB

R.T.: 11.107 min
 Delta R.T.: -0.033 min
 Response: 394382280
 Conc: 72.33 ng/ml



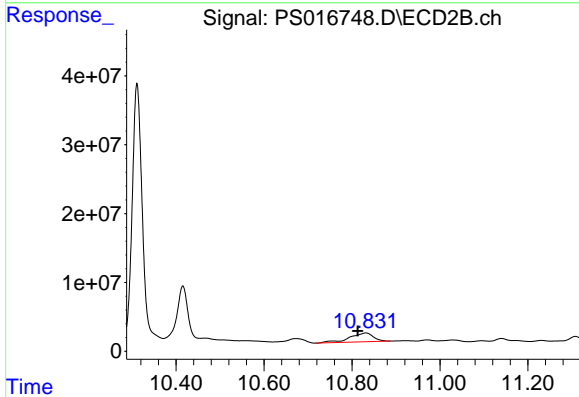
#14 DINOSEB

R.T.: 9.842 min
 Delta R.T.: 0.010 min
 Response: 25164467
 Conc: 12.00 ng/ml

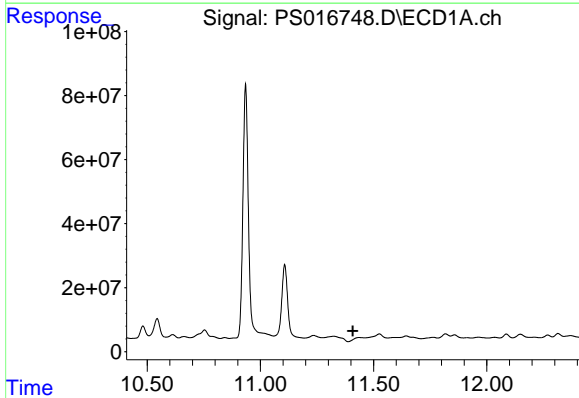


#15 Picloram
 R.T.: 10.935 min
 Delta R.T.: -0.032 min
 Response: 1043679002
 Conc: 117.13 ng/ml

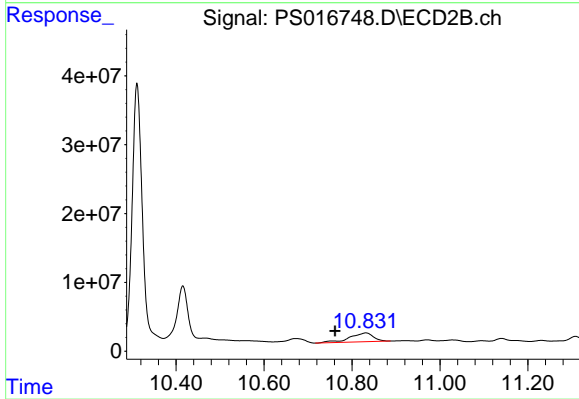
Instrument :
 ECD_S
 ClientSampleId :
 RO-PSC124042



#15 Picloram
 R.T.: 10.832 min
 Delta R.T.: 0.018 min
 Response: 48866306
 Conc: 13.34 ng/ml



#16 DCPA
 R.T.: 11.436 min
 Delta R.T.: 0.028 min
 Response: -19197060
 Conc: N.D.



#16 DCPA
 R.T.: 10.832 min
 Delta R.T.: 0.070 min
 Response: 48866306
 Conc: 11.26 ng/ml