

Data Path : Z:\pestpcbsrv\HPCHEM1\ECD_S\Data\PS090320\
 Data File : PS012084.D
 Signal(s) : Signal #1: ECD1A.ch Signal #2: ECD2B.ch
 Acq On : 03 Sep 2020 14:05
 Operator : DD\AJ
 Sample : L3837-05RE
 Misc :
 ALS Vial : 11 Sample Multiplier: 1

Instrument :
 ECD_S
 ClientSampleId :

Integration File signal 1: autoint1.e
 Integration File signal 2: autoint2.e
 Quant Time: Sep 03 16:04:03 2020
 Quant Method : Z:\pestpcbsrv\HPCHEM1\ECD_S\Method\PS081120.M
 Quant Title : 8080.M
 QLast Update : Tue Aug 11 15:43:16 2020
 Response via : Initial Calibration
 Integrator: ChemStation

Volume Inj. : 2 µl
 Signal #1 Phase : Rtx-CLPesticides Signal #2 Phase: Rtx-CLPesticides2
 Signal #1 Info : 30M x 0.32mm x0.5 Signal #2 Info : 30M x 0.32mm x 0.25µm

Compound	RT#1	RT#2	Resp#1	Resp#2	ng/ml	ng/ml

System Monitoring Compounds						
4) S 2,4-DCAA	7.219	6.915	223.7E6	137.7E6	205.129	257.526 #
Target Compounds						
1) T Dalapon	2.998	2.586	33247226	56472279	26.691	74.714 #
2) T 3,5-DICHL...	0.000	6.096	0	74605244	N.D.	90.692
3) T 4-Nitroph...	7.055	0.000	2463870	0	4.183	N.D. #
5) T DICAMBA	7.395	7.049	7007776	9568454	1.711	4.429 #
6) T MCPP	7.570	0.000	7850101	0	2.457	N.D. #
7) T MCPA	7.696	7.473	210.9E6	111.5E6	46.377	40.702
8) T DICHLORPROP	0.000	7.739	0	26278585	N.D.	46.541
9) T 2,4-D	8.398	0.000	24018445	0	21.272	N.D. #
10) T Pentachlo...	8.694	0.000	16080819	0	1.118	N.D. #
11) T 2,4,5-TP ...	0.000	8.793	0	41425612	N.D.	14.169
12) T 2,4,5-T	9.411	0.000	45075901	0	7.607	N.D. #
13) T 2,4-DB	9.989	0.000	10403997	0	13.094	N.D. #

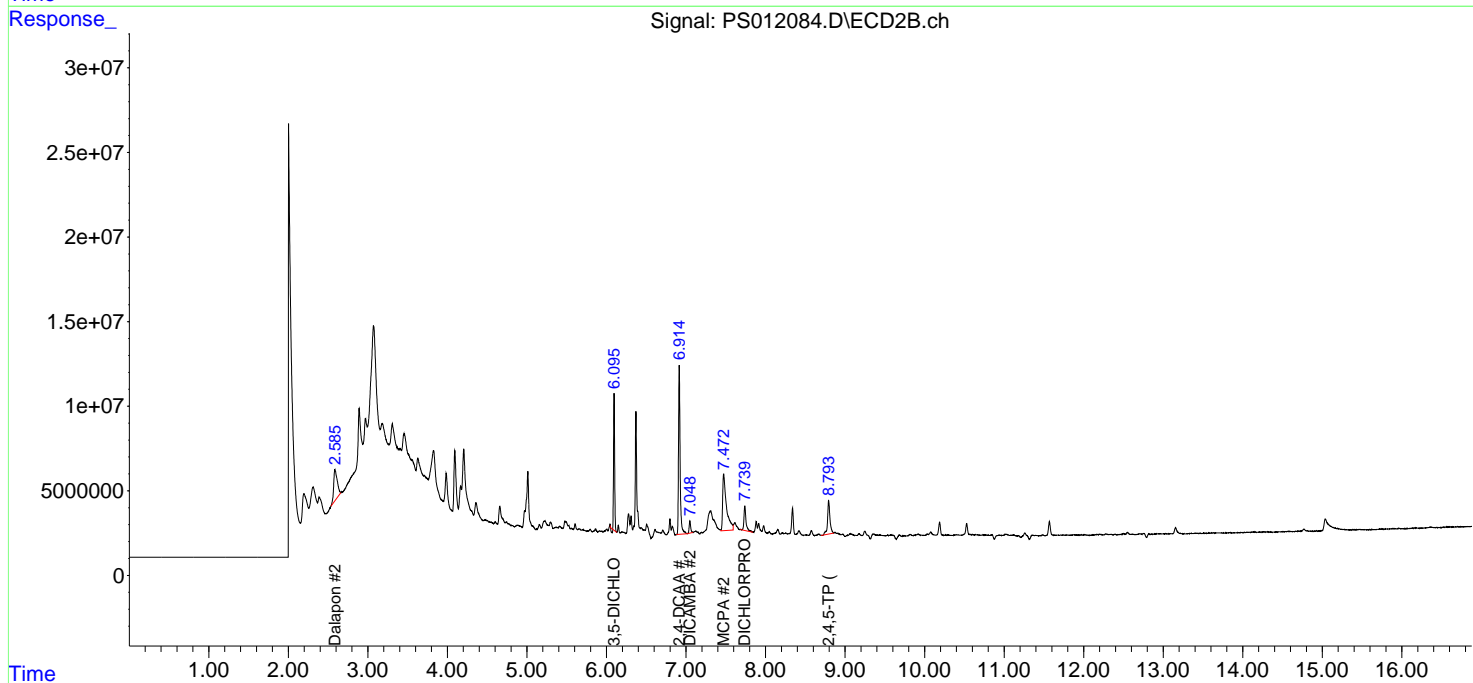
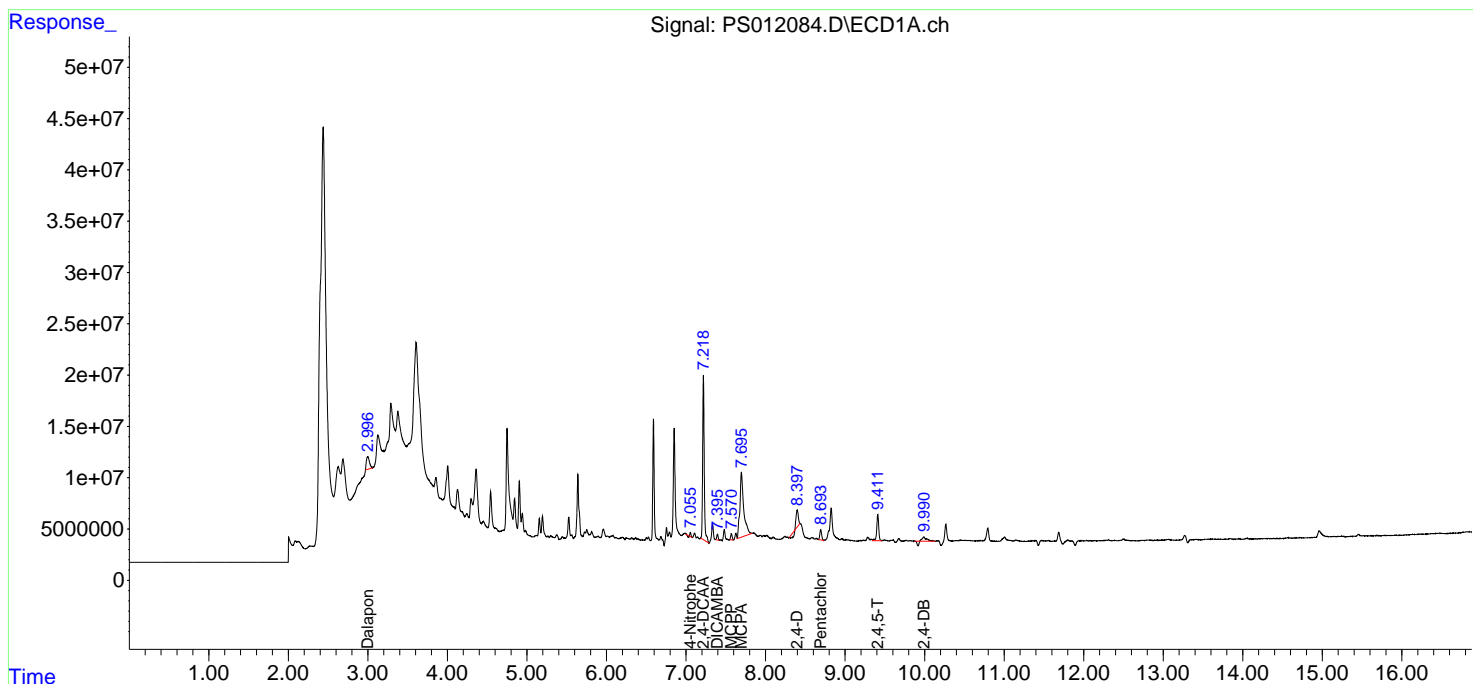
(f)=RT Delta > 1/2 Window (#)=Amounts differ by > 25% (m)=manual int.

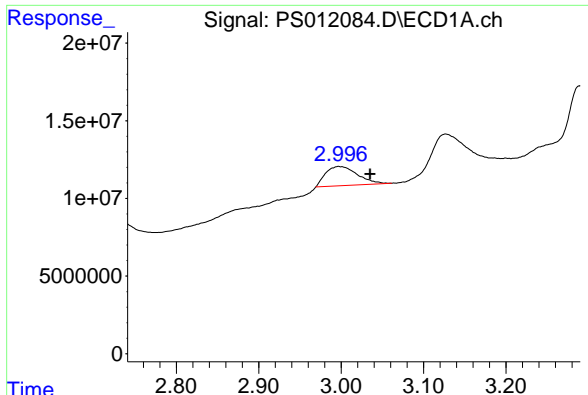
Data Path : Z:\pestpcbsrv\HPCHEM1\ECD_S\Data\PS090320\
 Data File : PS012084.D
 Signal(s) : Signal #1: ECD1A.ch Signal #2: ECD2B.ch
 Acq On : 03 Sep 2020 14:05
 Operator : DD\AJ
 Sample : L3837-05RE
 Misc :
 ALS Vial : 11 Sample Multiplier: 1

Instrument :
 ECD_S
 ClientSampled :

Integration File signal 1: autoint1.e
 Integration File signal 2: autoint2.e
 Quant Time: Sep 03 16:04:03 2020
 Quant Method : Z:\pestpcbsrv\HPCHEM1\ECD_S\Method\PS081120.M
 Quant Title : 8080.M
 QLast Update : Tue Aug 11 15:43:16 2020
 Response via : Initial Calibration
 Integrator: ChemStation

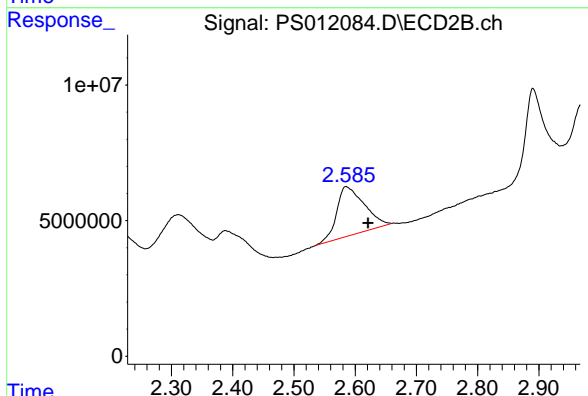
Volume Inj. : 2 µl
 Signal #1 Phase : Rtx-CLPesticides Signal #2 Phase: Rtx-CLPesticides2
 Signal #1 Info : 30M x 0.32mm x0.5 Signal #2 Info : 30M x 0.32mm x 0.25µm



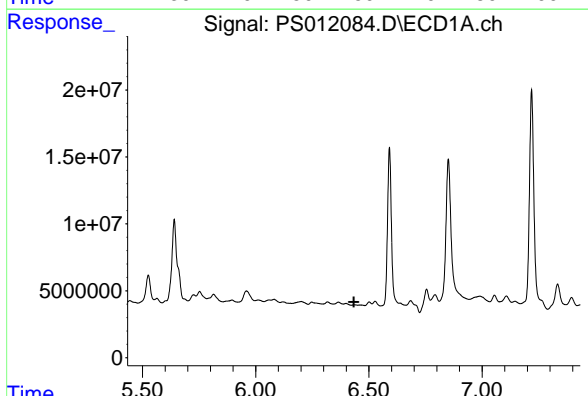


#1 Dalapon
 R.T.: 2.998 min
 Delta R.T.: -0.037 min
 Response: 33247226
 Conc: 26.69 ng/ml

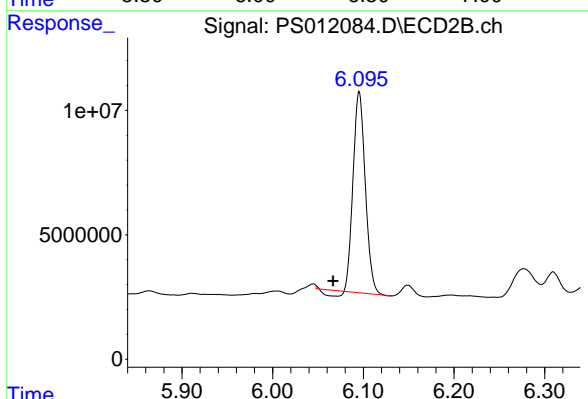
Instrument :
 ECD_S
 ClientSampleId :



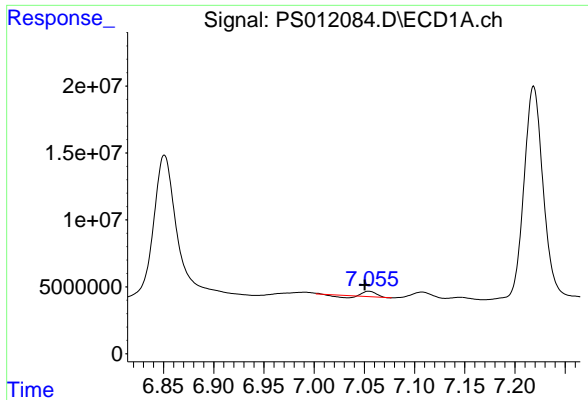
#1 Dalapon
 R.T.: 2.586 min
 Delta R.T.: -0.036 min
 Response: 56472279
 Conc: 74.71 ng/ml



#2 3,5-DICHLOROBENZOIC ACID
 R.T.: 0.000 min
 Exp R.T. : 6.434 min
 Response: 0
 Conc: N.D.

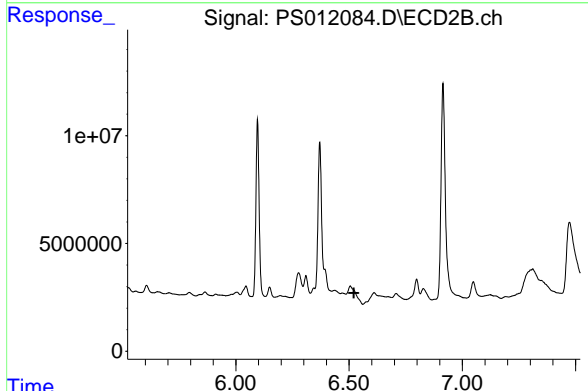


#2 3,5-DICHLOROBENZOIC ACID
 R.T.: 6.096 min
 Delta R.T.: 0.029 min
 Response: 74605244
 Conc: 90.69 ng/ml

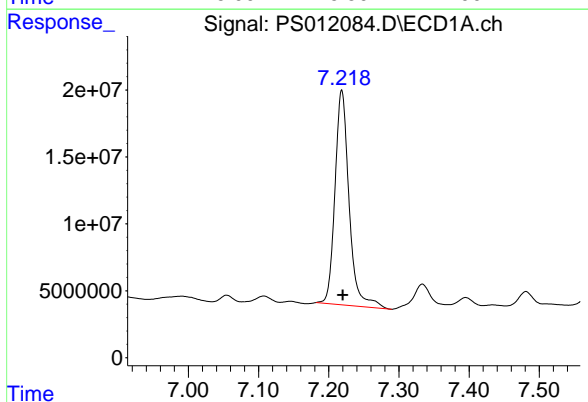


#3 4-Nitrophenol
 R.T.: 7.055 min
 Delta R.T.: 0.004 min
 Response: 2463870
 Conc: 4.18 ng/ml

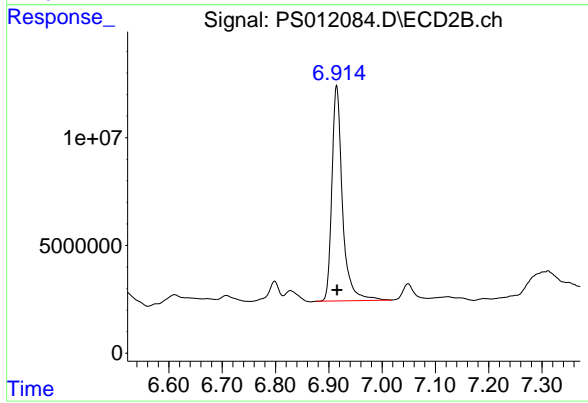
Instrument :
 ECD_S
 ClientSampled :



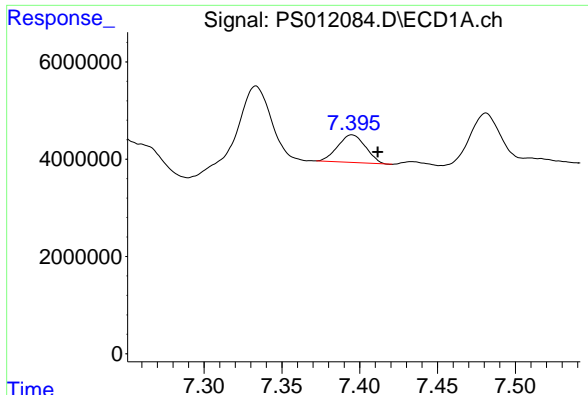
#3 4-Nitrophenol
 R.T.: 0.000 min
 Exp R.T. : 6.521 min
 Response: 0
 Conc: N.D.



#4 2,4-DCAA
 R.T.: 7.219 min
 Delta R.T.: -0.001 min
 Response: 223748203
 Conc: 205.13 ng/ml

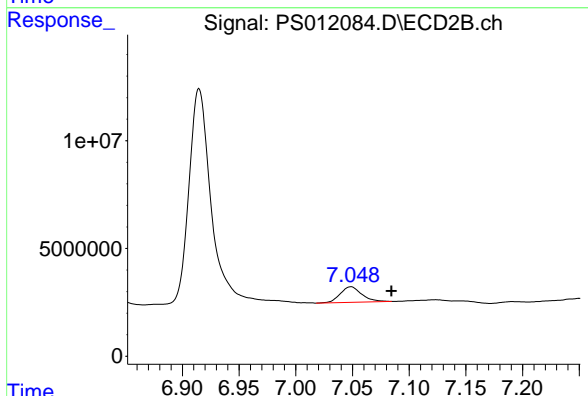


#4 2,4-DCAA
 R.T.: 6.915 min
 Delta R.T.: 0.000 min
 Response: 137721473
 Conc: 257.53 ng/ml

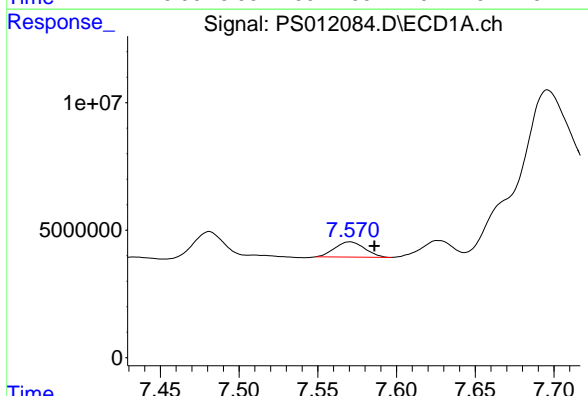


#5 DICAMBA
 R.T.: 7.395 min
 Delta R.T.: -0.016 min
 Response: 7007776
 Conc: 1.71 ng/ml

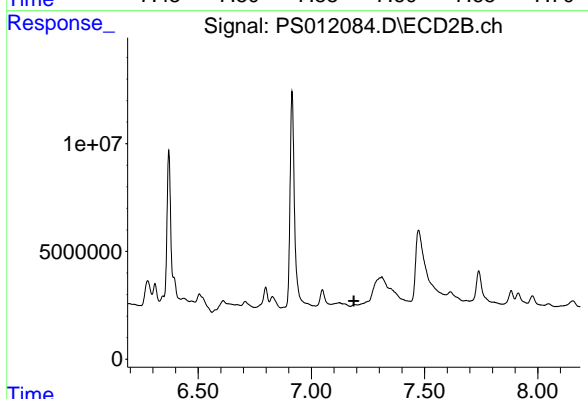
Instrument :
 ECD_S
 ClientSampled :



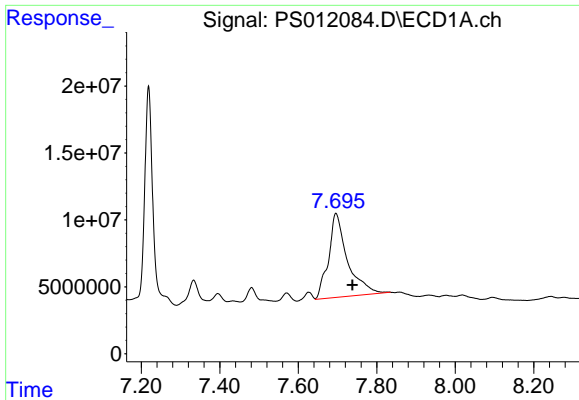
#5 DICAMBA
 R.T.: 7.049 min
 Delta R.T.: -0.036 min
 Response: 9568454
 Conc: 4.43 ng/ml



#6 MCPP
 R.T.: 7.570 min
 Delta R.T.: -0.016 min
 Response: 7850101
 Conc: 2.46 ug/ml



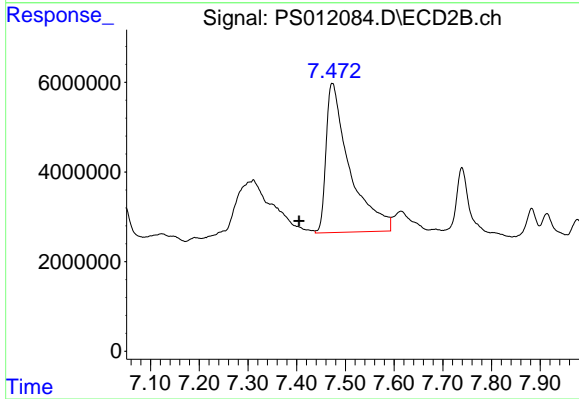
#6 MCPP
 R.T.: 0.000 min
 Exp R.T. : 7.188 min
 Response: 0
 Conc: N.D.



#7 MCPA

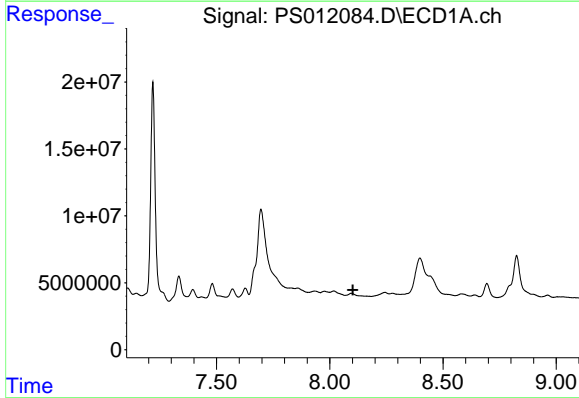
R.T.: 7.696 min
 Delta R.T.: -0.042 min
 Response: 210947331
 Conc: 46.38 ug/ml

Instrument :
 ECD_S
 ClientSampled :



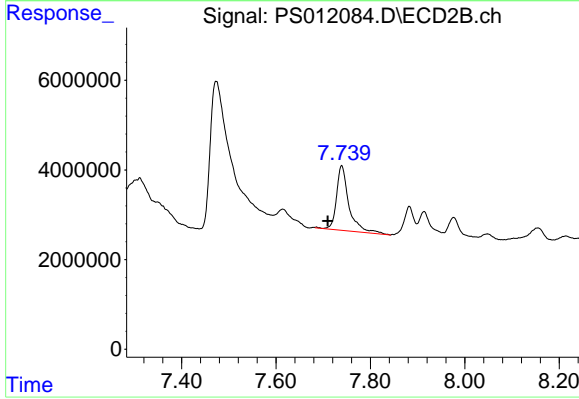
#7 MCPA

R.T.: 7.473 min
 Delta R.T.: 0.069 min
 Response: 111530334
 Conc: 40.70 ug/ml



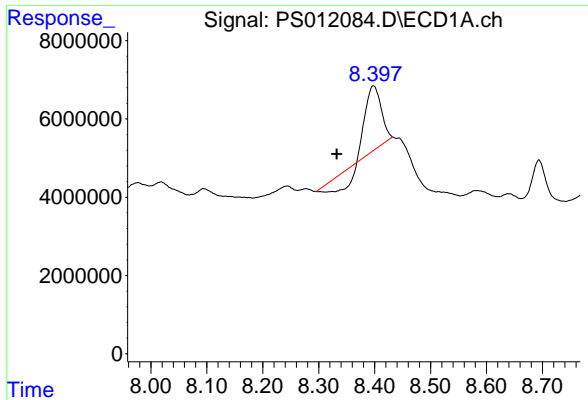
#8 DICHLORPROP

R.T.: 0.000 min
 Exp R.T. : 8.102 min
 Response: 0
 Conc: N.D.



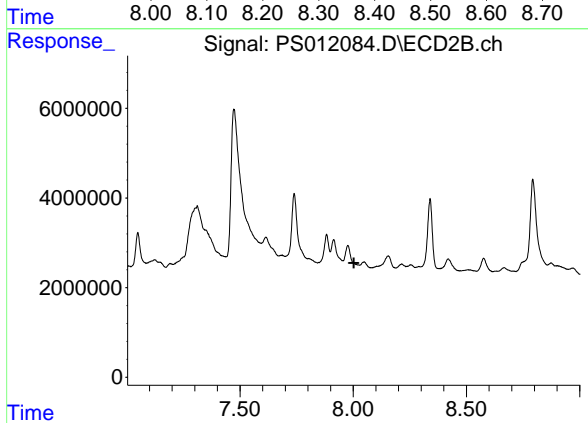
#8 DICHLORPROP

R.T.: 7.739 min
 Delta R.T.: 0.030 min
 Response: 26278585
 Conc: 46.54 ng/ml

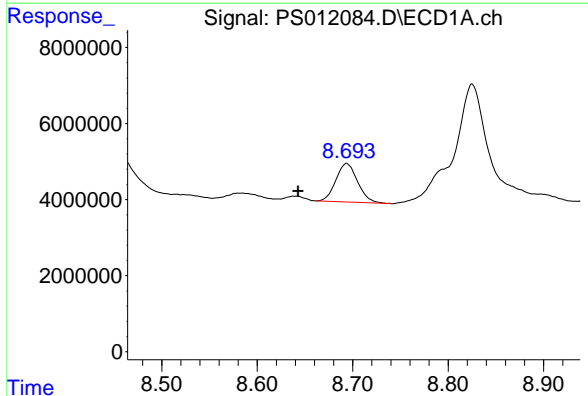


#9 2,4-D
 R.T.: 8.398 min
 Delta R.T.: 0.066 min
 Response: 24018445
 Conc: 21.27 ng/ml

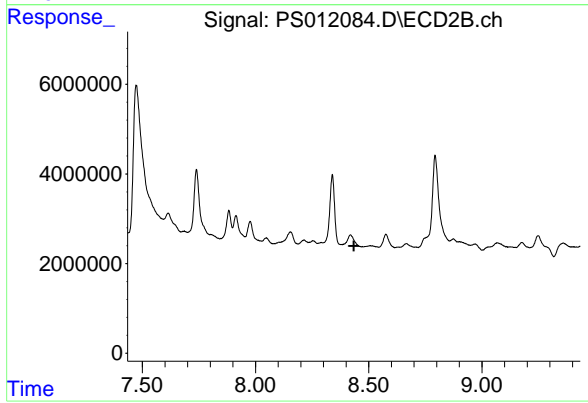
Instrument :
 ECD_S
 ClientSampled :



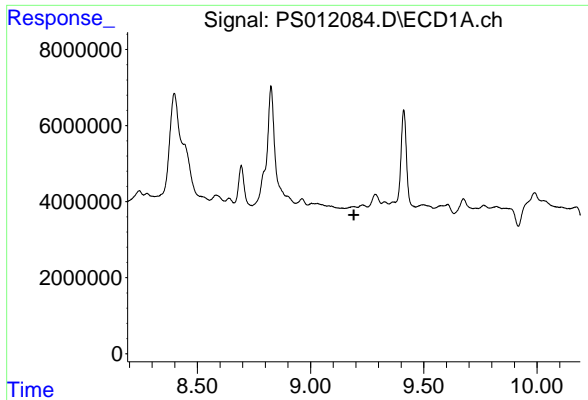
#9 2,4-D
 R.T.: 0.000 min
 Exp R.T. : 8.003 min
 Response: 0
 Conc: N.D.



#10 Pentachlorophenol
 R.T.: 8.694 min
 Delta R.T.: 0.051 min
 Response: 16080819
 Conc: 1.12 ng/ml

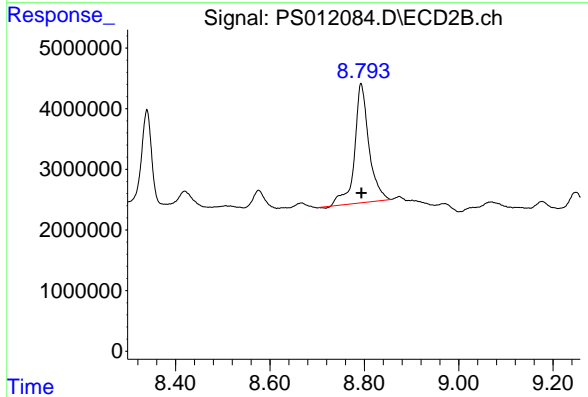


#10 Pentachlorophenol
 R.T.: 0.000 min
 Exp R.T. : 8.434 min
 Response: 0
 Conc: N.D.

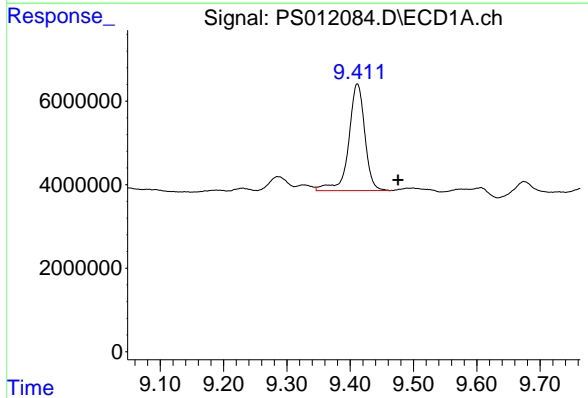


#11 2,4,5-TP (SILVEX)
 R.T.: 0.000 min
 Exp R.T.: 9.191 min
 Response: 0
 Conc: N.D.

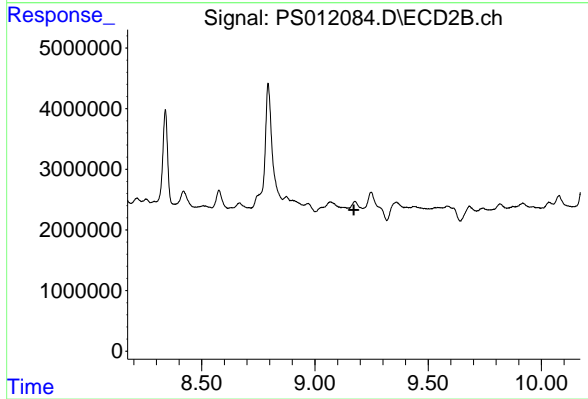
Instrument :
 ECD_S
 ClientSampled :



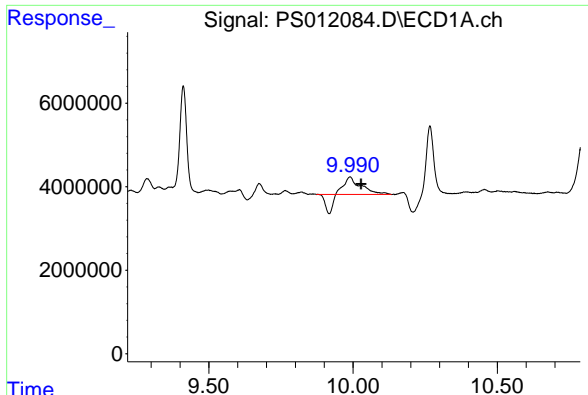
#11 2,4,5-TP (SILVEX)
 R.T.: 8.793 min
 Delta R.T.: 0.000 min
 Response: 41425612
 Conc: 14.17 ng/ml



#12 2,4,5-T
 R.T.: 9.411 min
 Delta R.T.: -0.065 min
 Response: 45075901
 Conc: 7.61 ng/ml



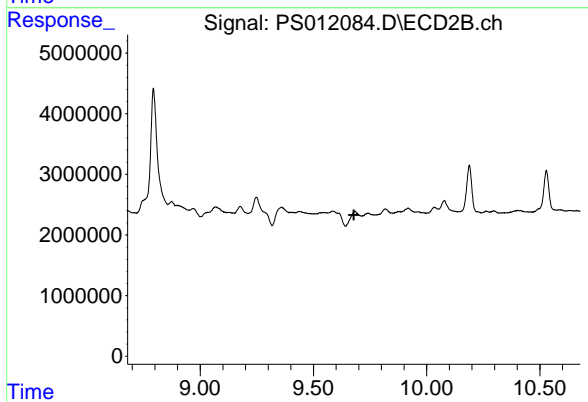
#12 2,4,5-T
 R.T.: 0.000 min
 Exp R.T.: 9.172 min
 Response: 0
 Conc: N.D.



#13 2,4-DB

R.T.: 9.989 min
Delta R.T.: -0.039 min
Response: 10403997
Conc: 13.09 ng/ml

Instrument :
ECD_S
ClientSampleId :



#13 2,4-DB

R.T.: 0.000 min
Exp R.T. : 9.679 min
Response: 0
Conc: N.D.