

Data Path : Z:\pestpcbsrv\HPCHEM1\ECD_S\Data\PS090324\
 Data File : PS027580.D
 Signal(s) : Signal #1: ECD1A.ch Signal #2: ECD2B.ch
 Acq On : 03 Sep 2024 13:02
 Operator : AR\AJ
 Sample : I.BLK
 Misc :
 ALS Vial : 2 Sample Multiplier: 1

Instrument :
 ECD_S
 ClientSampleId :
 I.BLK

Integration File signal 1: autoint1.e
 Integration File signal 2: autoint2.e
 Quant Time: Sep 03 15:23:28 2024
 Quant Method : Z:\pestpcbsrv\HPCHEM1\ECD_S\Method\PS090324.M
 Quant Title : 8080.M
 QLast Update : Tue Sep 03 15:23:07 2024
 Response via : Initial Calibration
 Integrator: ChemStation

Volume Inj. : 1 µl
 Signal #1 Phase : ZB-MR2 Signal #2 Phase: ZB-MR2
 Signal #1 Info : 30M x 0.32mm x0.5 Signal #2 Info : 30M x 0.32mm x 0.25µm

| Compound | RT#1 | RT#2 | Resp#1 | Resp#2 | ng/ml | ng/ml |
|-----------------------------|--------|---------|----------|----------|---------|---------|
| ----- | | | | | | |
| System Monitoring Compounds | | | | | | |
| 4) S 2,4-DCAA | 7.149 | 7.730 | 1232.1E6 | 966.3E6 | 485.891 | 502.690 |
| Target Compounds | | | | | | |
| 1) T Dalapon | 0.000 | 2.722f | 0 | 3215045 | N.D. | <MDL |
| 3) T 4-Nitroph... | 6.947 | 7.232f | 6447831 | 3918929 | 4.326 | 3.042 # |
| 5) T DICAMBA | 0.000 | 7.923 | 0 | 10424964 | N.D. | 1.174 |
| 6) T MCPP | 0.000 | 8.019 | 0 | 198242 | N.D. | <MDL |
| 7) T MCPA | 0.000 | 8.257 | 0 | 47390118 | N.D. | 5.522 |
| 8) T DICHLORPROP | 7.993f | 0.000 | 2064691 | 0 | <MDL | N.D. # |
| 10) T Pentachlo... | 8.536 | 9.463f | 2123617 | 759743 | <MDL | <MDL # |
| 11) T 2,4,5-TP ... | 0.000 | 9.879 | 0 | 1488599 | N.D. | <MDL |
| 12) T 2,4,5-T | 0.000 | 10.292 | 0 | 1973922 | N.D. | <MDL |
| 13) T 2,4-DB | 9.950 | 0.000 | 1039869 | 0 | <MDL | N.D. # |
| 15) T Picloram | 10.973 | 12.323 | 16839279 | 14703562 | <MDL | <MDL # |
| 16) T DCPA | 0.000 | 12.231f | 0 | 2493597 | N.D. | <MDL |

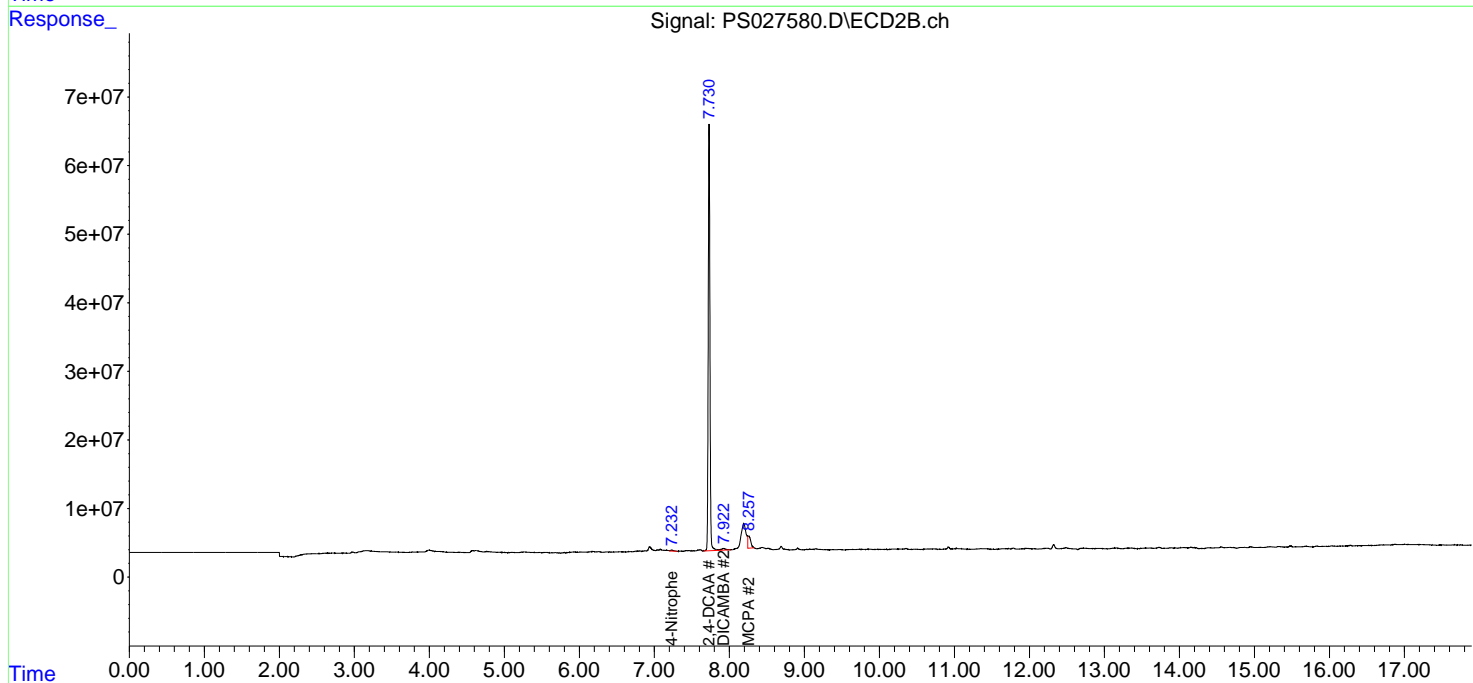
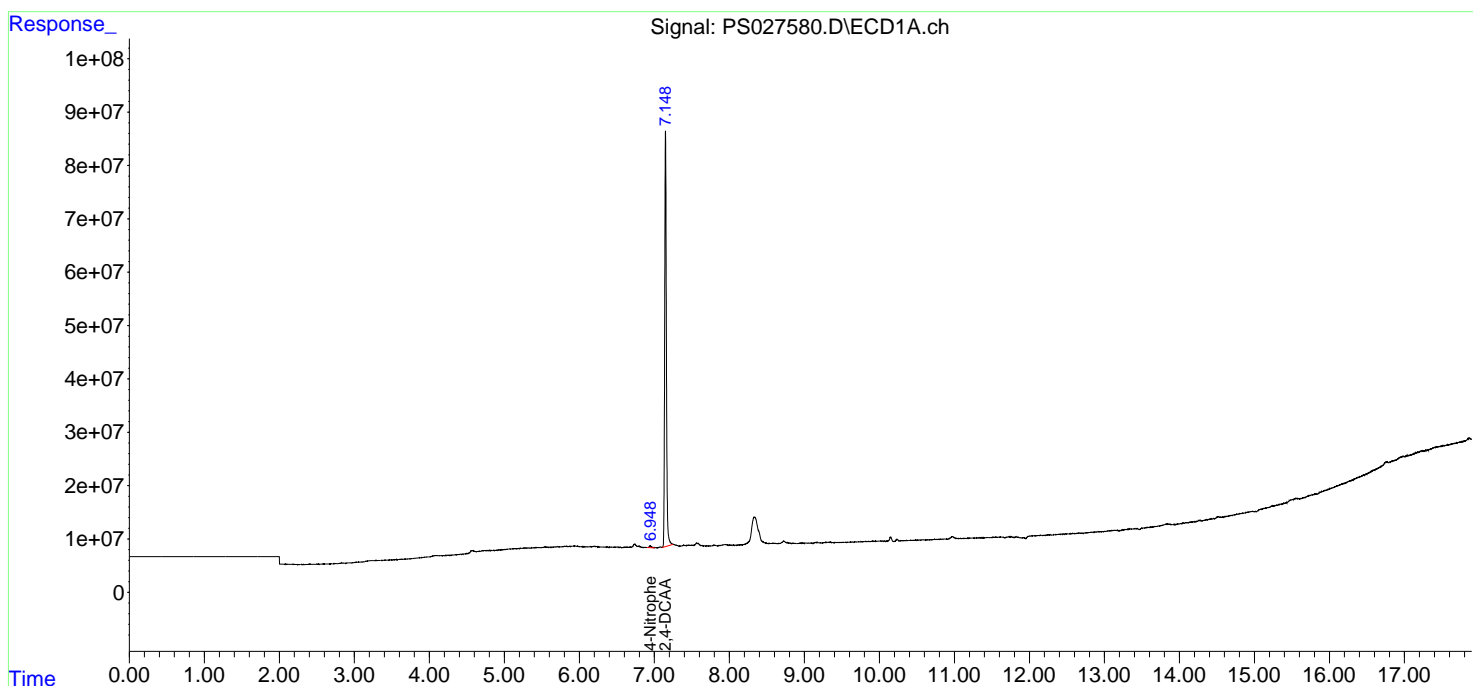
(f)=RT Delta > 1/2 Window (#)=Amounts differ by > 25% (m)=manual int.

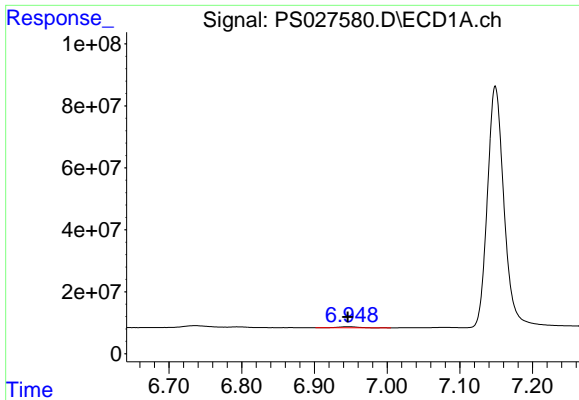
Data Path : Z:\pestpcbsrv\HPCHEM1\ECD_S\Data\PS090324\
 Data File : PS027580.D
 Signal(s) : Signal #1: ECD1A.ch Signal #2: ECD2B.ch
 Acq On : 03 Sep 2024 13:02
 Operator : AR\AJ
 Sample : I.BLK
 Misc :
 ALS Vial : 2 Sample Multiplier: 1

Instrument :
 ECD_S
 ClientSampleId :
 I.BLK

Integration File signal 1: autoint1.e
 Integration File signal 2: autoint2.e
 Quant Time: Sep 03 15:23:28 2024
 Quant Method : Z:\pestpcbsrv\HPCHEM1\ECD_S\Method\PS090324.M
 Quant Title : 8080.M
 QLast Update : Tue Sep 03 15:23:07 2024
 Response via : Initial Calibration
 Integrator: ChemStation

Volume Inj. : 1 µl
 Signal #1 Phase : ZB-MR1 Signal #2 Phase: ZB-MR2
 Signal #1 Info : 30M x 0.32mm x 0.5 Signal #2 Info : 30M x 0.32mm x 0.25µm

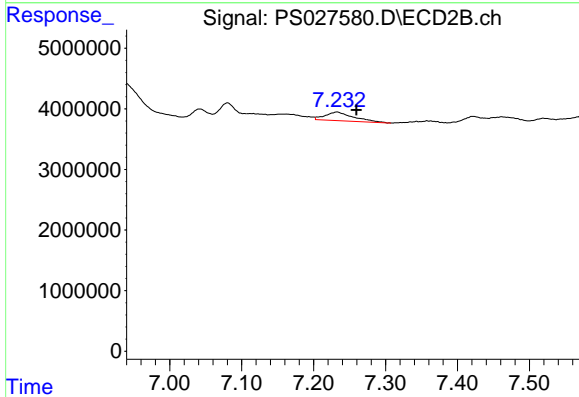




#3 4-Nitrophenol

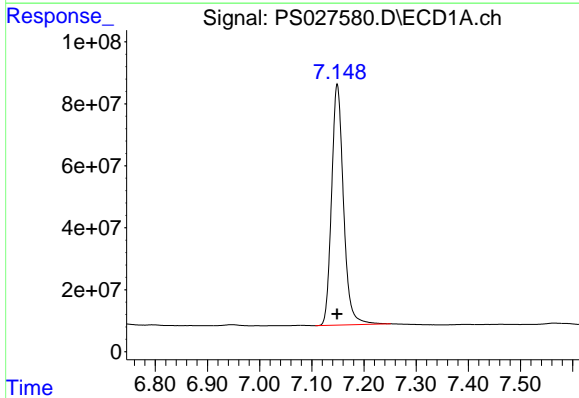
R.T.: 6.947 min
 Delta R.T.: 0.000 min
 Response: 6447831
 Conc: 4.33 ng/ml

Instrument :
 ECD_S
 ClientSampleId :
 I.BLK



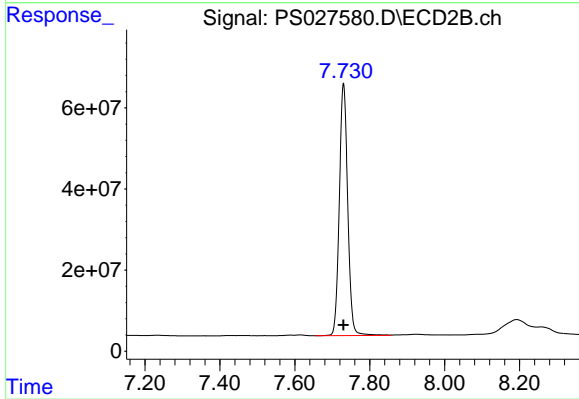
#3 4-Nitrophenol

R.T.: 7.232 min
 Delta R.T.: -0.027 min
 Response: 3918929
 Conc: 3.04 ng/ml



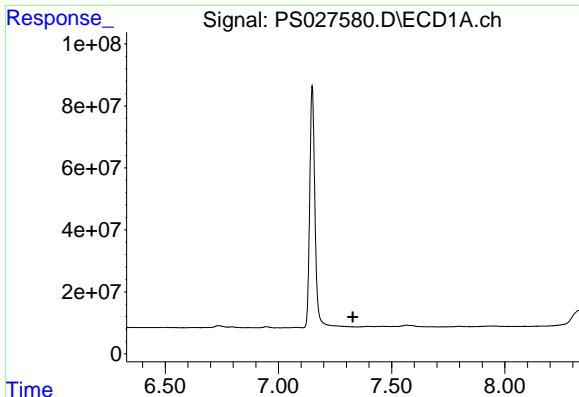
#4 2,4-DCAA

R.T.: 7.149 min
 Delta R.T.: 0.000 min
 Response: 1232129522
 Conc: 485.89 ng/ml



#4 2,4-DCAA

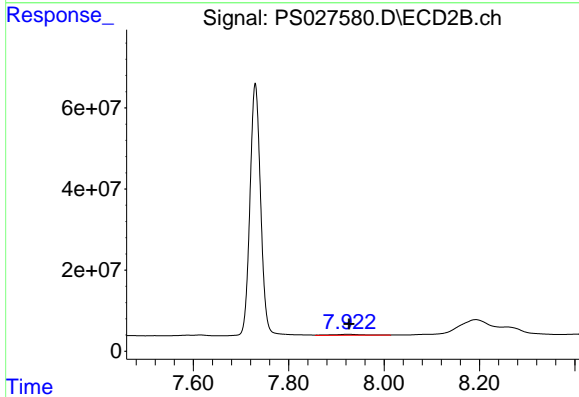
R.T.: 7.730 min
 Delta R.T.: 0.000 min
 Response: 966334914
 Conc: 502.69 ng/ml



#5 DICAMBA

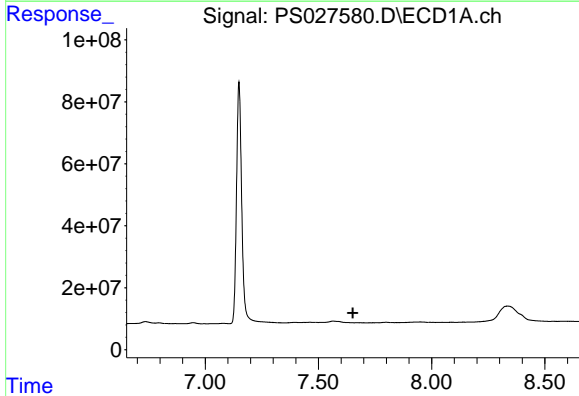
R.T.: 0.000 min
 Exp R.T.: 7.329 min
 Response: 0
 Conc: N.D.

Instrument :
 ECD_S
 ClientSampleId :
 I.BLK



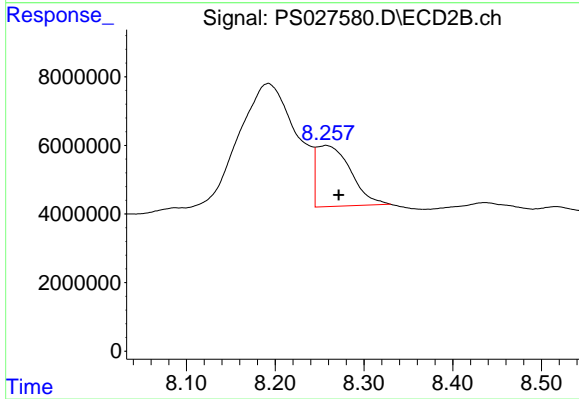
#5 DICAMBA

R.T.: 7.923 min
 Delta R.T.: -0.004 min
 Response: 10424964
 Conc: 1.17 ng/ml



#7 MCPA

R.T.: 0.000 min
 Exp R.T.: 7.652 min
 Response: 0
 Conc: N.D.



#7 MCPA

R.T.: 8.257 min
 Delta R.T.: -0.014 min
 Response: 47390118
 Conc: 5.52 ug/ml