

Data Path : Z:\pestpcbsrv\HPCHEM1\ECD_S\Data\PS090920\
 Data File : PS012181.D
 Signal(s) : Signal #1: ECD1A.ch Signal #2: ECD2B.ch
 Acq On : 09 Sep 2020 17:10
 Operator : DD\AJ
 Sample : PB131494BL
 Misc :
 ALS Vial : 9 Sample Multiplier: 1

Instrument :
 ECD_S
 ClientSampleId :

Integration File signal 1: autoint1.e
 Integration File signal 2: autoint2.e
 Quant Time: Sep 10 01:16:25 2020
 Quant Method : Z:\pestpcbsrv\HPCHEM1\ECD_S\Method\PS081120.M
 Quant Title : 8080.M
 QLast Update : Tue Aug 11 15:43:16 2020
 Response via : Initial Calibration
 Integrator: ChemStation

Volume Inj. : 2 µl
 Signal #1 Phase : Rtx-CLPesticides Signal #2 Phase: Rtx-CLPesticides2
 Signal #1 Info : 30M x 0.32mm x0.5 Signal #2 Info : 30M x 0.32mm x 0.25µm

Compound	RT#1	RT#2	Resp#1	Resp#2	ng/ml	ng/ml

System Monitoring Compounds						
4) S 2,4-DCAA	7.216	6.914	513.4E6	298.9E6	470.664	558.911
Target Compounds						
2) T 3,5-DICHL...	0.000	6.096	0	85593269	N.D.	104.050
3) T 4-Nitroph...	7.054	0.000	3232787	0	5.488	N.D. #
5) T DICAMBA	7.395	7.047	11136600	10322214	2.719	4.778 #
6) T MCPP	7.627	0.000	8594767	0	2.690	N.D. #
7) T MCPA	7.763	7.374	21518656	31388194	4.731	11.455 #
8) T DICHLORPROP	0.000	7.741	0	12610134	N.D.	22.333
9) T 2,4-D	8.395	0.000	120.7E6	0	106.896	N.D. #
11) T 2,4,5-TP ...	0.000	8.763	0	22560393	N.D.	7.717
12) T 2,4,5-T	9.408	0.000	18264094	0	3.082	N.D. #
15) T Picloram	0.000	11.034	0	46731154	N.D.	10.310

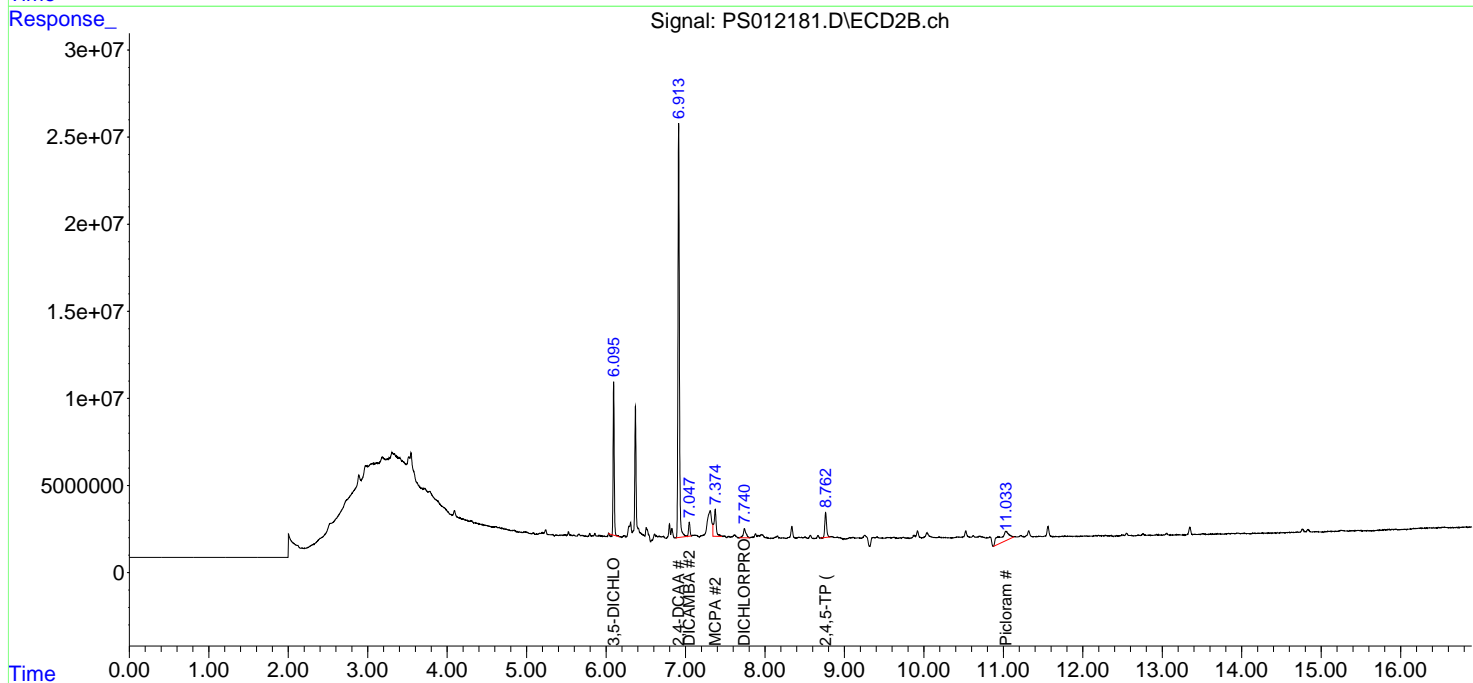
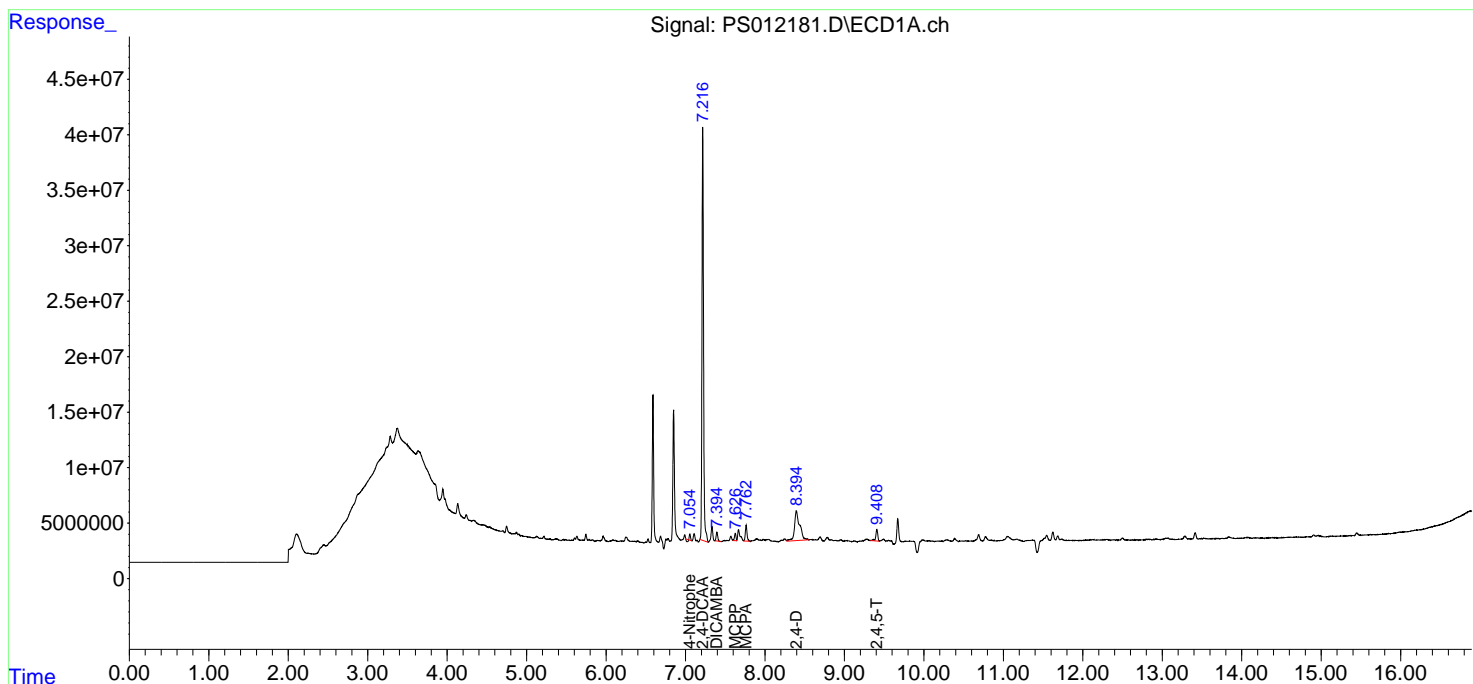
(f)=RT Delta > 1/2 Window (#)=Amounts differ by > 25% (m)=manual int.

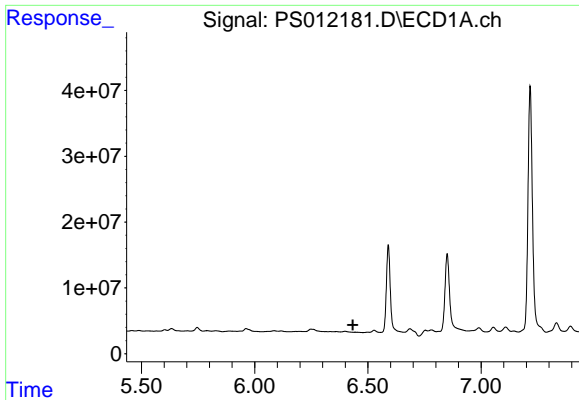
Data Path : Z:\pestpcbsrv\HPCHEM1\ECD_S\Data\PS090920\
 Data File : PS012181.D
 Signal(s) : Signal #1: ECD1A.ch Signal #2: ECD2B.ch
 Acq On : 09 Sep 2020 17:10
 Operator : DD\AJ
 Sample : PB131494BL
 Misc :
 ALS Vial : 9 Sample Multiplier: 1

Instrument :
 ECD_S
 ClientSampled :

Integration File signal 1: autoint1.e
 Integration File signal 2: autoint2.e
 Quant Time: Sep 10 01:16:25 2020
 Quant Method : Z:\pestpcbsrv\HPCHEM1\ECD_S\Method\PS081120.M
 Quant Title : 8080.M
 QLast Update : Tue Aug 11 15:43:16 2020
 Response via : Initial Calibration
 Integrator: ChemStation

Volume Inj. : 2 µl
 Signal #1 Phase : Rtx-CLPesticides Signal #2 Phase: Rtx-CLPesticides2
 Signal #1 Info : 30M x 0.32mm x 0.5 Signal #2 Info : 30M x 0.32mm x 0.25µm

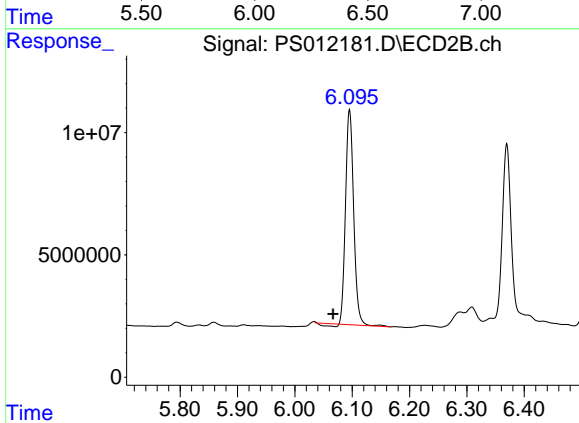




#2 3,5-DICHLORO BENZOIC ACID

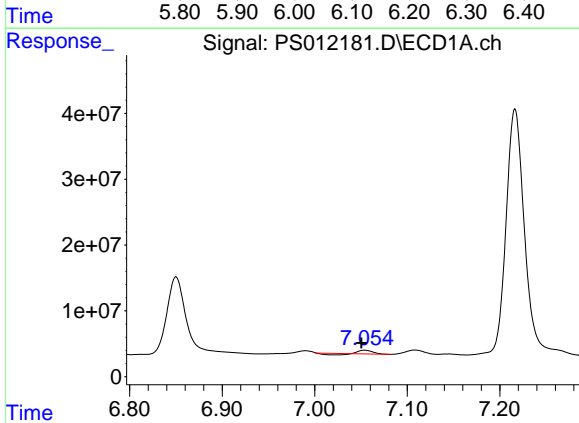
R.T.: 0.000 min
 Exp R.T.: 6.434 min
 Response: 0
 Conc: N.D.

Instrument :
 ECD_S
 ClientSampled :



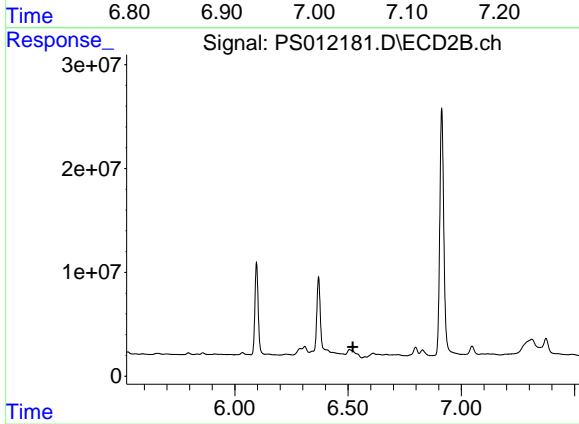
#2 3,5-DICHLORO BENZOIC ACID

R.T.: 6.096 min
 Delta R.T.: 0.029 min
 Response: 85593269
 Conc: 104.05 ng/ml



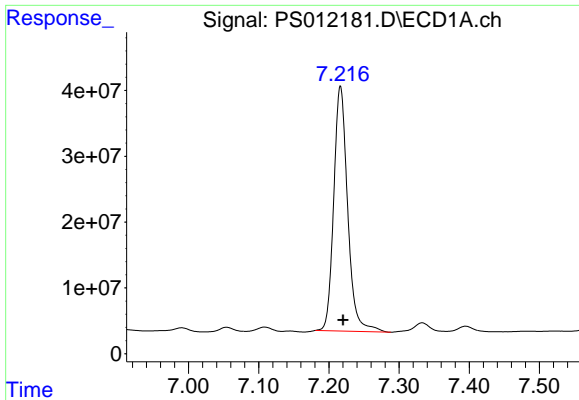
#3 4-Nitrophenol

R.T.: 7.054 min
 Delta R.T.: 0.004 min
 Response: 3232787
 Conc: 5.49 ng/ml



#3 4-Nitrophenol

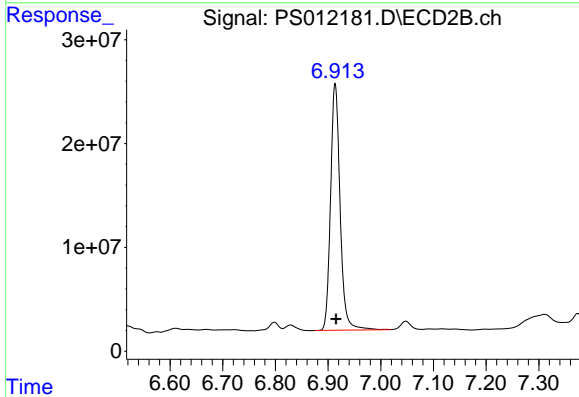
R.T.: 0.000 min
 Exp R.T.: 6.521 min
 Response: 0
 Conc: N.D.



#4 2,4-DCAA

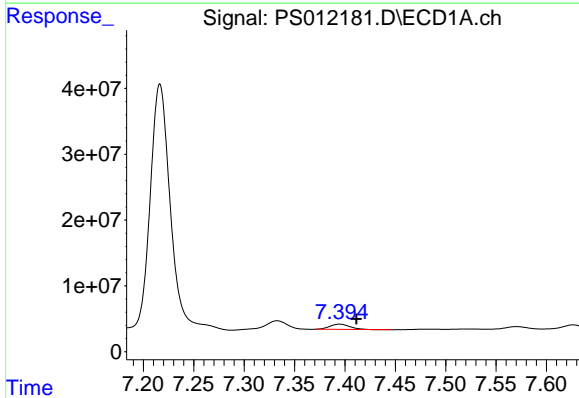
R.T.: 7.216 min
 Delta R.T.: -0.004 min
 Response: 513385173
 Conc: 470.66 ng/ml

Instrument :
 ECD_S
 ClientSampled :



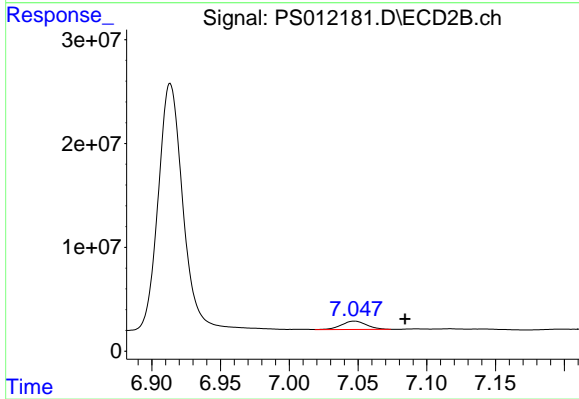
#4 2,4-DCAA

R.T.: 6.914 min
 Delta R.T.: -0.002 min
 Response: 298897929
 Conc: 558.91 ng/ml



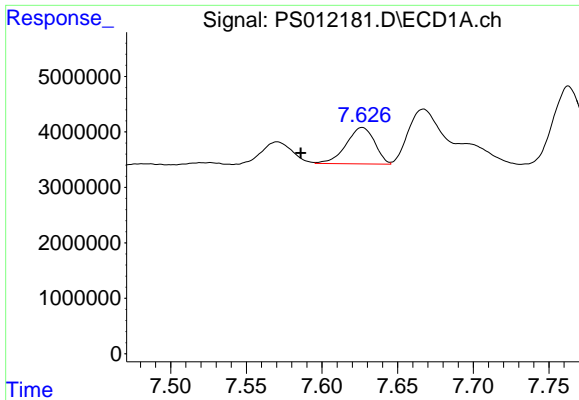
#5 DICAMBA

R.T.: 7.395 min
 Delta R.T.: -0.017 min
 Response: 11136600
 Conc: 2.72 ng/ml



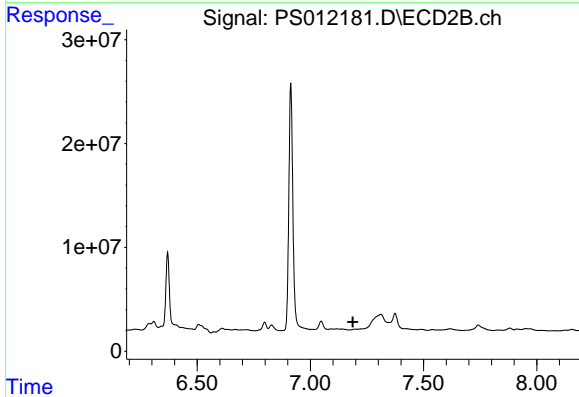
#5 DICAMBA

R.T.: 7.047 min
 Delta R.T.: -0.037 min
 Response: 10322214
 Conc: 4.78 ng/ml

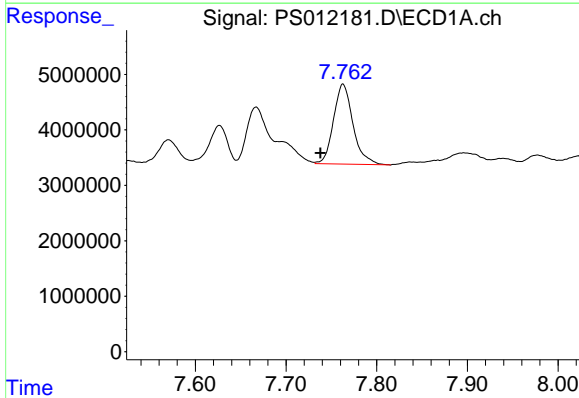


#6 MCP
 R.T.: 7.627 min
 Delta R.T.: 0.041 min
 Response: 8594767
 Conc: 2.69 ug/ml

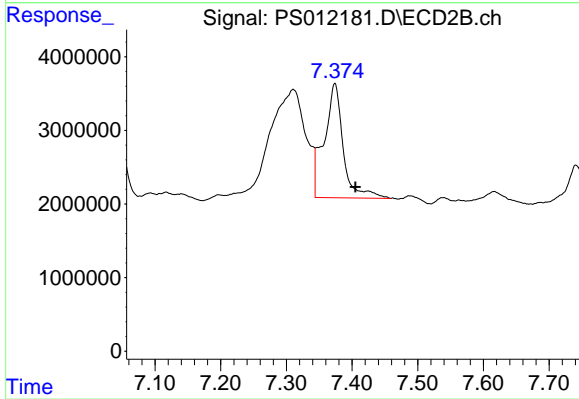
Instrument :
 ECD_S
 ClientSampled :



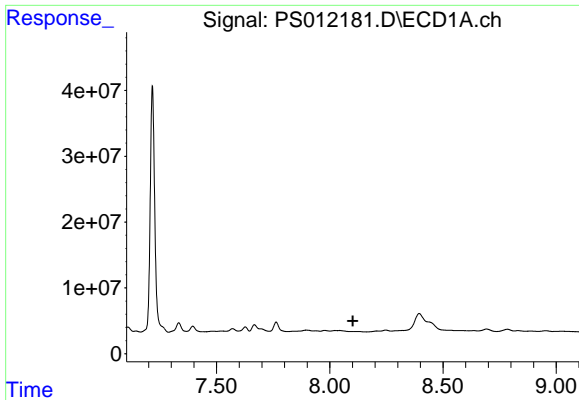
#6 MCP
 R.T.: 0.000 min
 Exp R.T. : 7.188 min
 Response: 0
 Conc: N.D.



#7 MCPA
 R.T.: 7.763 min
 Delta R.T.: 0.025 min
 Response: 21518656
 Conc: 4.73 ug/ml



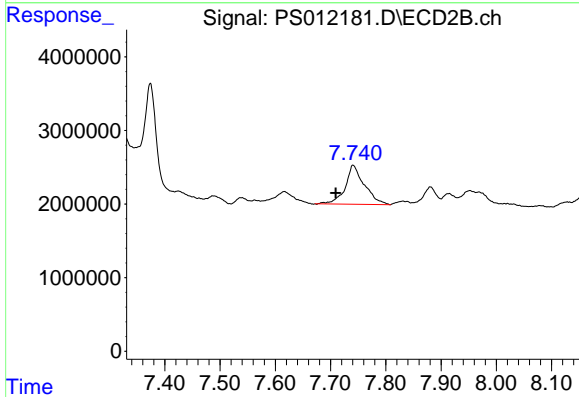
#7 MCPA
 R.T.: 7.374 min
 Delta R.T.: -0.031 min
 Response: 31388194
 Conc: 11.45 ug/ml



#8 DICHLORPROP

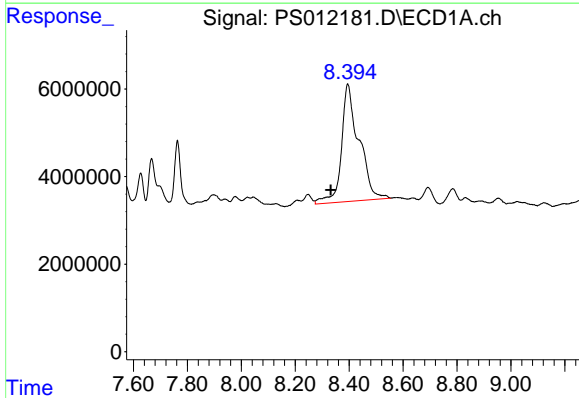
R.T.: 0.000 min
 Exp R.T.: 8.102 min
 Response: 0
 Conc: N.D.

Instrument :
 ECD_S
 ClientSampleId :



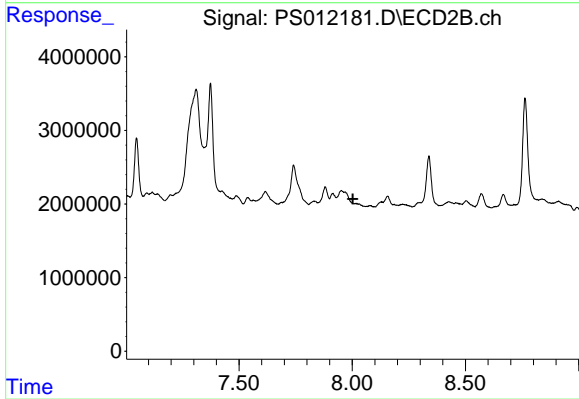
#8 DICHLORPROP

R.T.: 7.741 min
 Delta R.T.: 0.032 min
 Response: 12610134
 Conc: 22.33 ng/ml



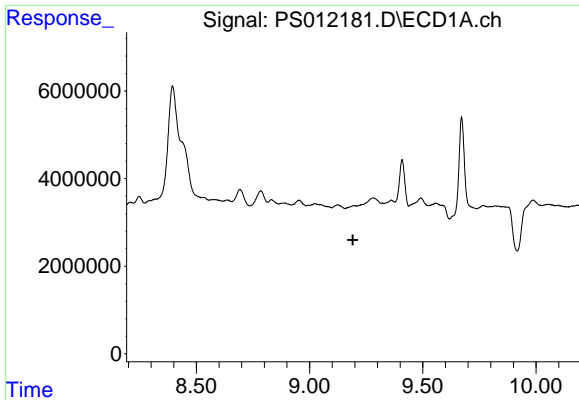
#9 2,4-D

R.T.: 8.395 min
 Delta R.T.: 0.063 min
 Response: 120695898
 Conc: 106.90 ng/ml



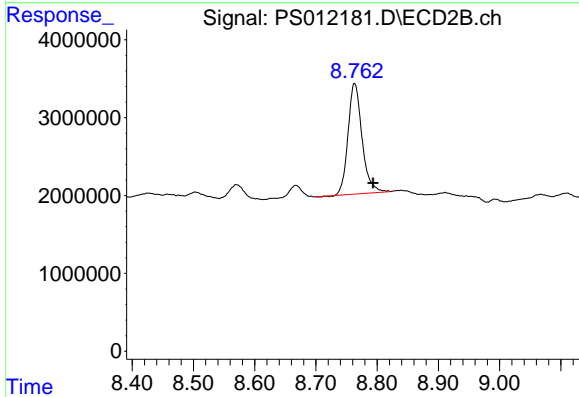
#9 2,4-D

R.T.: 0.000 min
 Exp R.T.: 8.003 min
 Response: 0
 Conc: N.D.

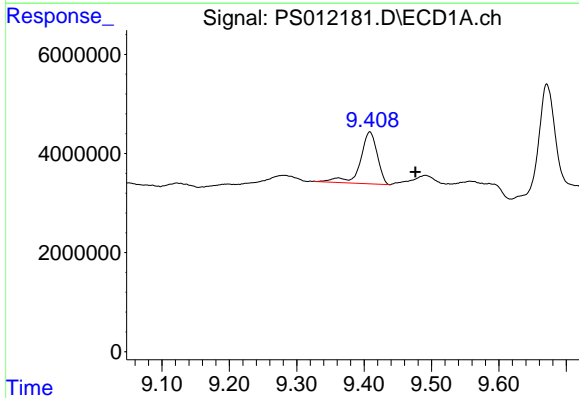


#11 2,4,5-TP (SILVEX)
 R.T.: 0.000 min
 Exp R.T.: 9.191 min
 Response: 0
 Conc: N.D.

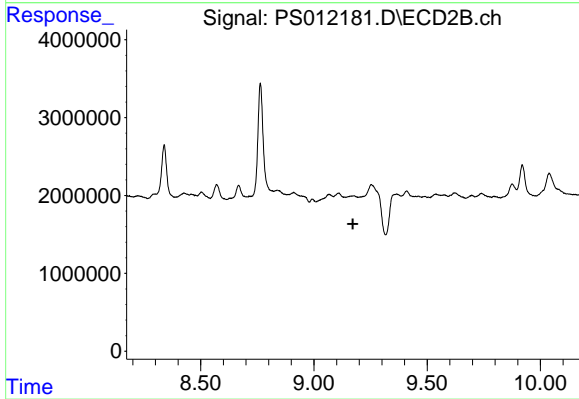
Instrument :
 ECD_S
 ClientSampleId :



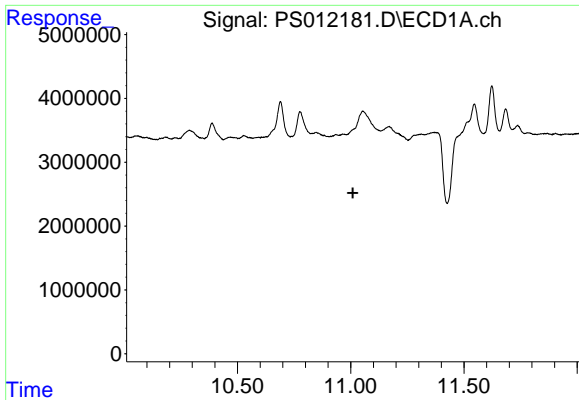
#11 2,4,5-TP (SILVEX)
 R.T.: 8.763 min
 Delta R.T.: -0.030 min
 Response: 22560393
 Conc: 7.72 ng/ml



#12 2,4,5-T
 R.T.: 9.408 min
 Delta R.T.: -0.067 min
 Response: 18264094
 Conc: 3.08 ng/ml

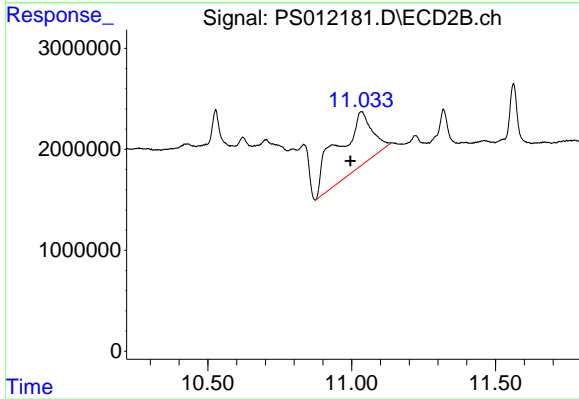


#12 2,4,5-T
 R.T.: 0.000 min
 Exp R.T.: 9.172 min
 Response: 0
 Conc: N.D.



#15 Picloram
 R.T.: 0.000 min
 Exp R.T.: 11.009 min
 Response: 0
 Conc: N.D.

Instrument :
 ECD_S
 ClientSampleId :



#15 Picloram
 R.T.: 11.034 min
 Delta R.T.: 0.039 min
 Response: 46731154
 Conc: 10.31 ng/ml