

Data Path : Z:\pestpcbsrv\HPCHEM1\ECD_S\Data\PS090921\
 Data File : PS016769.D
 Signal(s) : Signal #1: ECD1A.ch Signal #2: ECD2B.ch
 Acq On : 09 Sep 2021 20:40
 Operator : DD\AJ
 Sample : I.BLK
 Misc :
 ALS Vial : 2 Sample Multiplier: 1

Instrument :
 ECD_S
 ClientSampleId :

Integration File signal 1: autoint1.e
 Integration File signal 2: autoint2.e
 Quant Time: Sep 10 03:03:43 2021
 Quant Method : Z:\pestpcbsrv\HPCHEM1\ECD_S\Method\PS083121.M
 Quant Title : 8080.M
 QLast Update : Wed Sep 01 10:13:14 2021
 Response via : Initial Calibration
 Integrator: ChemStation

Volume Inj. : 2 µl
 Signal #1 Phase : Rtx-CLPesticides Signal #2 Phase: Rtx-CLPesticides2
 Signal #1 Info : 30M x 0.32mm x0.5 Signal #2 Info : 30M x 0.32mm x 0.25µm

Compound	RT#1	RT#2	Resp#1	Resp#2	ng/ml	ng/ml

System Monitoring Compounds						
4) S 2,4-DCAA	7.183	6.763	562.5E6	246.0E6	374.522	474.598 #

Target Compounds

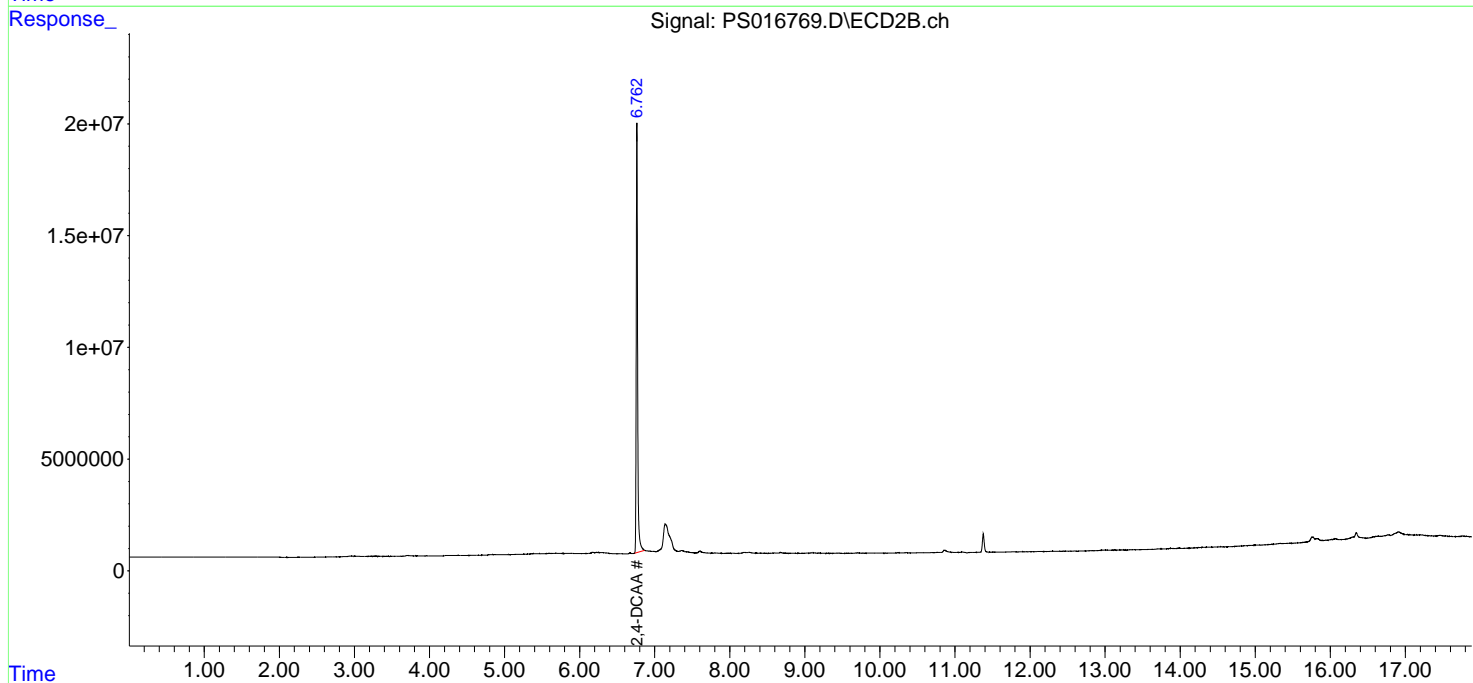
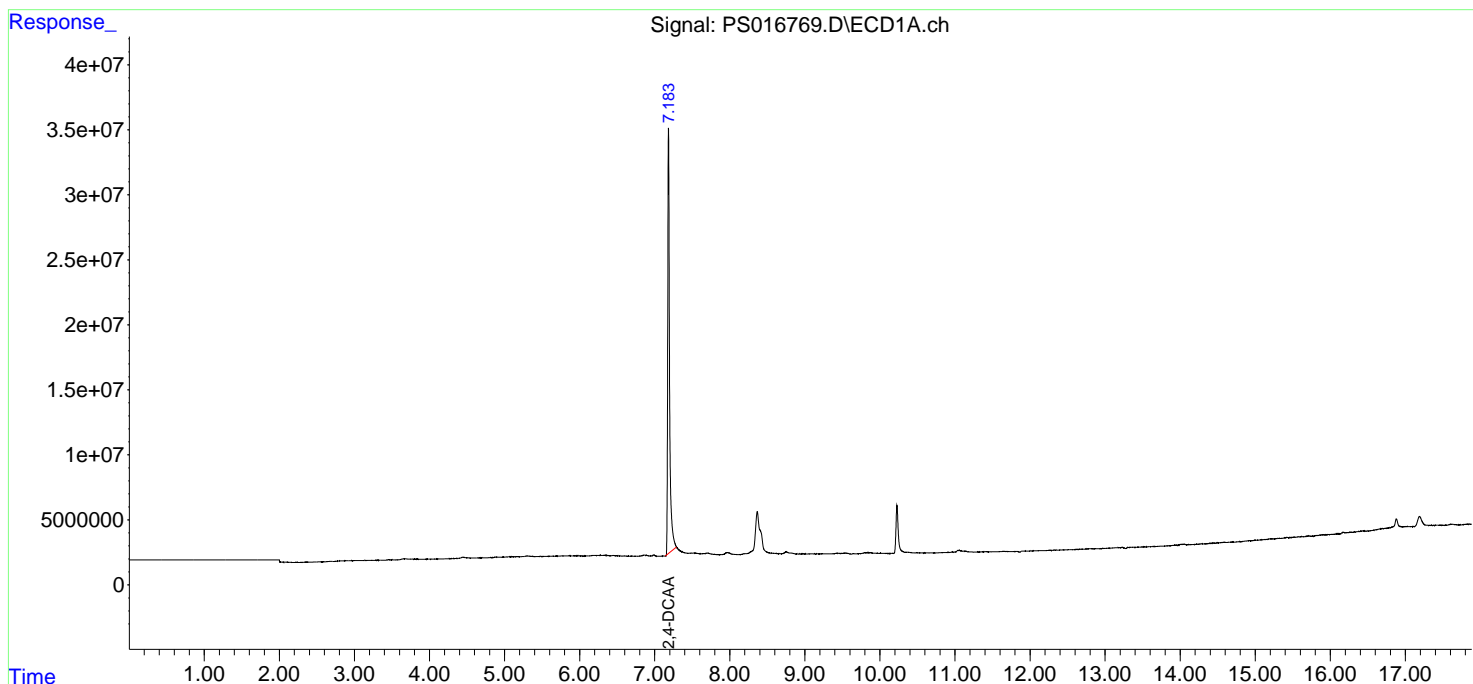
(f)=RT Delta > 1/2 Window (#)=Amounts differ by > 25% (m)=manual int.

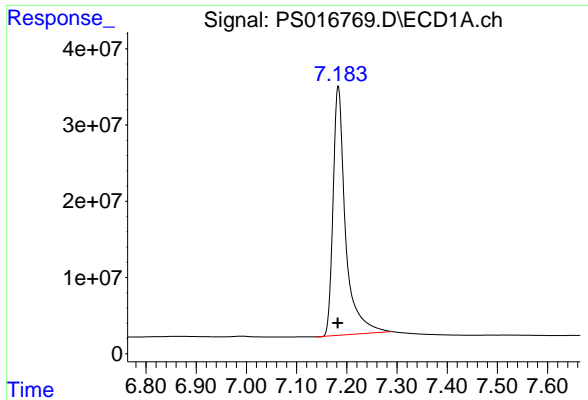
Data Path : Z:\pestpcbsrv\HPCHEM1\ECD_S\Data\PS090921\
Data File : PS016769.D
Signal(s) : Signal #1: ECD1A.ch Signal #2: ECD2B.ch
Acq On : 09 Sep 2021 20:40
Operator : DD\AJ
Sample : I.BLK
Misc :
ALS Vial : 2 Sample Multiplier: 1

Instrument :
ECD_S
ClientSampled :

Integration File signal 1: autoint1.e
Integration File signal 2: autoint2.e
Quant Time: Sep 10 03:03:43 2021
Quant Method : Z:\pestpcbsrv\HPCHEM1\ECD_S\Method\PS083121.M
Quant Title : 8080.M
QLast Update : Wed Sep 01 10:13:14 2021
Response via : Initial Calibration
Integrator: ChemStation

Volume Inj. : 2 µl
Signal #1 Phase : Rtx-CLPesticides Signal #2 Phase: Rtx-CLPesticides2
Signal #1 Info : 30M x 0.32mm x0.5 Signal #2 Info : 30M x 0.32mm x 0.25µm

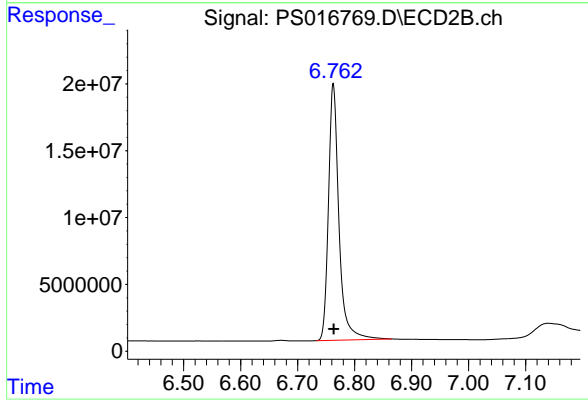




#4 2,4-DCAA

R.T.: 7.183 min
Delta R.T.: 0.000 min
Response: 562480823
Conc: 374.52 ng/ml

Instrument :
ECD_S
ClientSampleId :



#4 2,4-DCAA

R.T.: 6.763 min
Delta R.T.: 0.000 min
Response: 246001469
Conc: 474.60 ng/ml