

Data Path : Z:\pestpcbsrv\HPCHEM1\ECD\_S\Data\PS091018\  
 Data File : PS001682.D  
 Signal(s) : Signal #1: ECD1A.ch Signal #2: ECD2B.ch  
 Acq On : 10 Sep 2018 19:14  
 Operator : EI\SJ  
 Sample : J4777-04  
 Misc :  
 ALS Vial : 7 Sample Multiplier: 1

Instrument :  
 ECD\_S  
 ClientSampleId :

Integration File signal 1: autoint1.e  
 Integration File signal 2: autoint2.e  
 Quant Time: Sep 11 02:43:51 2018  
 Quant Method : Z:\pestpcbsrv\HPCHEM1\ECD\_S\Method\PS082218.M  
 Quant Title : 8080.M  
 QLast Update : Thu Aug 23 02:55:24 2018  
 Response via : Initial Calibration  
 Integrator: ChemStation

Volume Inj. : 2 µl  
 Signal #1 Phase : Rtx-CLPesticides Signal #2 Phase: Rtx-CLPesticides2  
 Signal #1 Info : 30M x 0.32mm x0.5 Signal #2 Info : 30M x 0.32mm x 0.25µm

Compound	RT#1	RT#2	Resp#1	Resp#2	ng/ml	ng/ml
-----						
System Monitoring Compounds						
4) S 2,4-DCAA	11.490	10.990	90904653	92207572	492.440	455.279
Target Compounds						
1) T Dalapon	0.000	2.395	0	13185259	N.D.	55.093 #
5) T DICAMBA	0.000	11.234	0	3550037	N.D.	5.062 #
6) T MCPP	12.178	0.000	12963439	0	25.764	N.D. #
15) T Picloram	17.005	16.926	2404773	7766980	1.717	5.956 #
16) T DCPA	0.000	16.926	0	7766980	N.D.	5.440 #
-----						

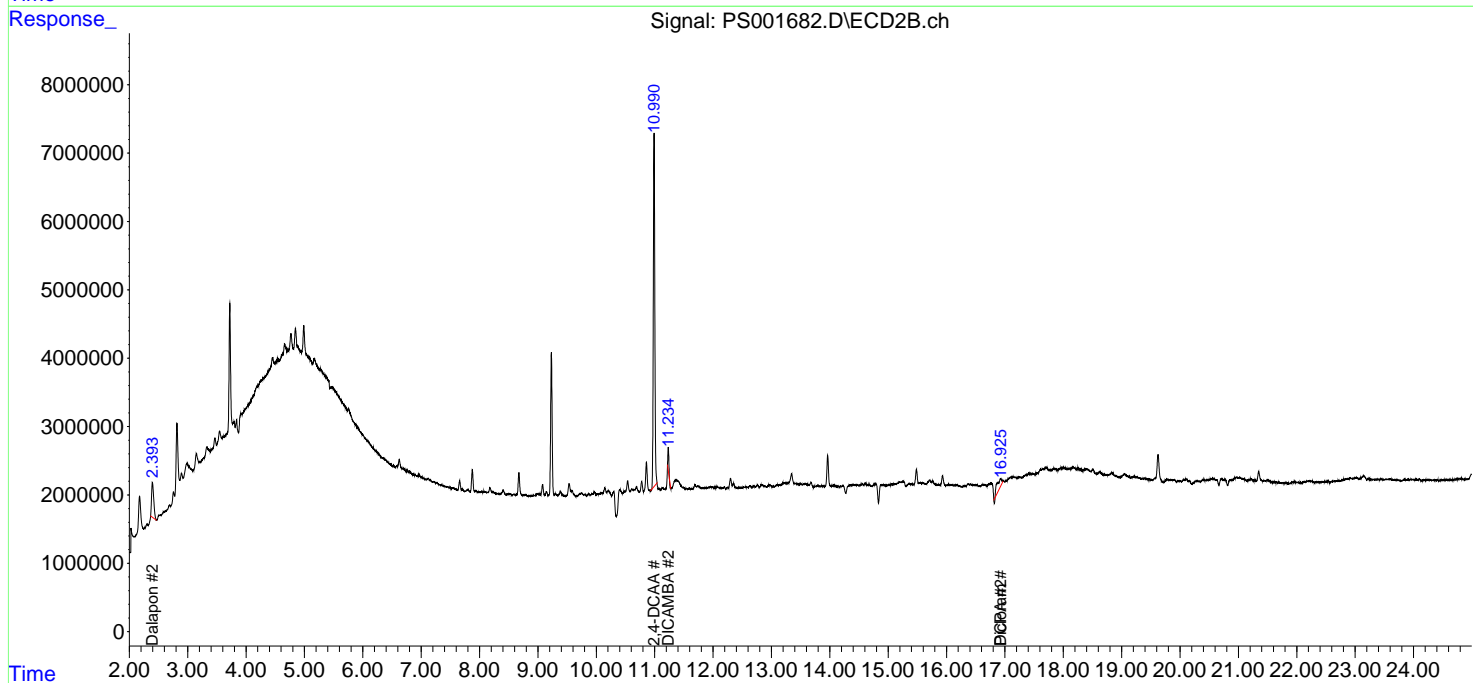
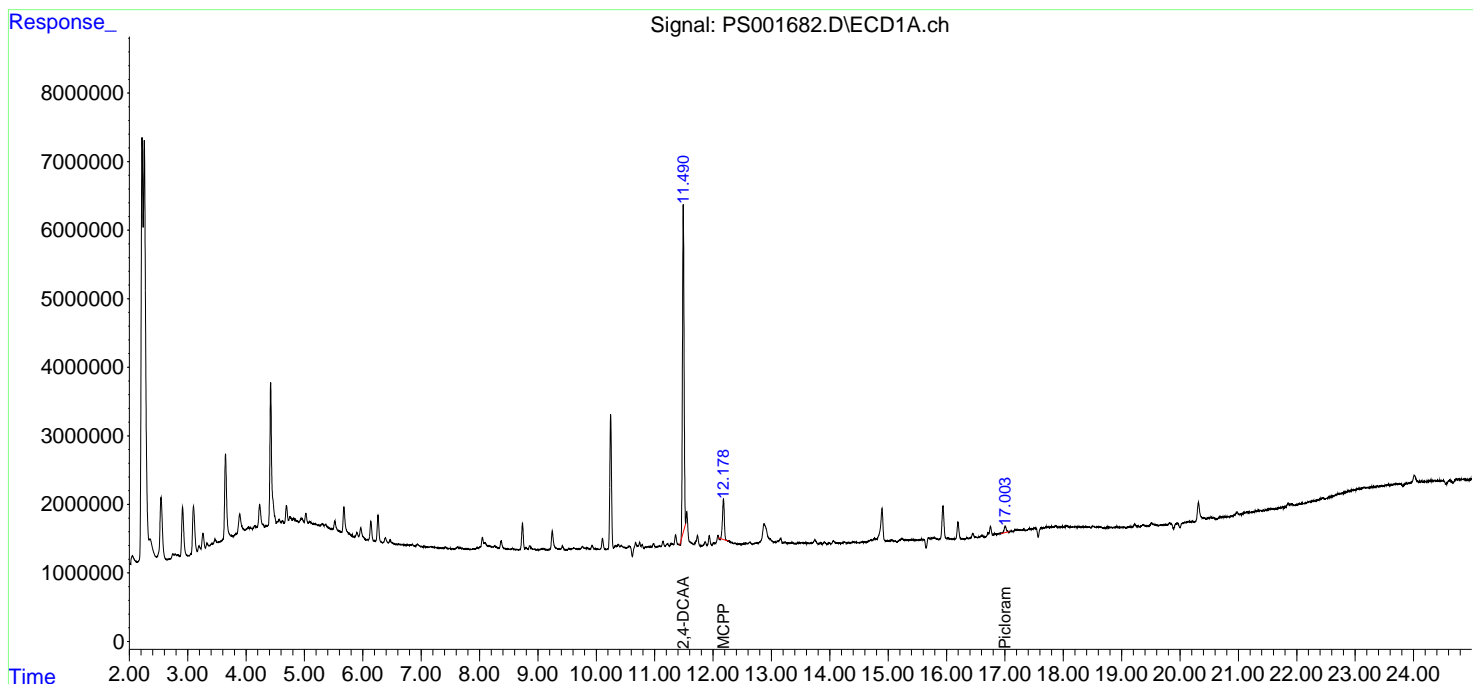
(f)=RT Delta > 1/2 Window (#)=Amounts differ by > 25% (m)=manual int.

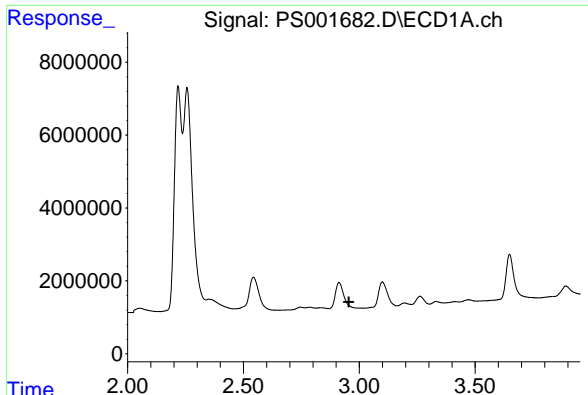
Data Path : Z:\pestpcbsrv\HPCHEM1\ECD\_S\Data\PS091018\  
 Data File : PS001682.D  
 Signal(s) : Signal #1: ECD1A.ch Signal #2: ECD2B.ch  
 Acq On : 10 Sep 2018 19:14  
 Operator : EI\SJ  
 Sample : J4777-04  
 Misc :  
 ALS Vial : 7 Sample Multiplier: 1

Instrument :  
 ECD\_S  
 ClientSampleId :

Integration File signal 1: autoint1.e  
 Integration File signal 2: autoint2.e  
 Quant Time: Sep 11 02:43:51 2018  
 Quant Method : Z:\pestpcbsrv\HPCHEM1\ECD\_S\Method\PS082218.M  
 Quant Title : 8080.M  
 QLast Update : Thu Aug 23 02:55:24 2018  
 Response via : Initial Calibration  
 Integrator: ChemStation

Volume Inj. : 2 µl  
 Signal #1 Phase : Rtx-CLPesticides Signal #2 Phase: Rtx-CLPesticides2  
 Signal #1 Info : 30M x 0.32mm x 0.5 Signal #2 Info : 30M x 0.32mm x 0.25µm

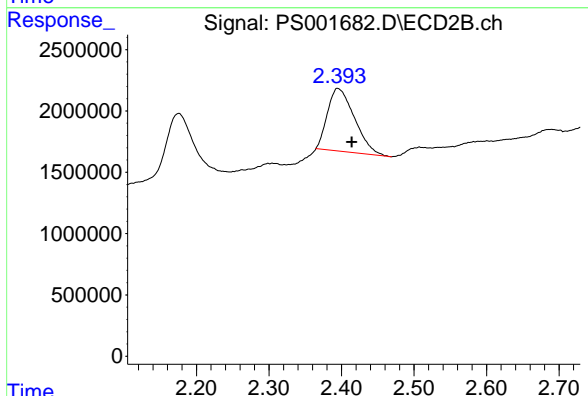




#1 Dalapon

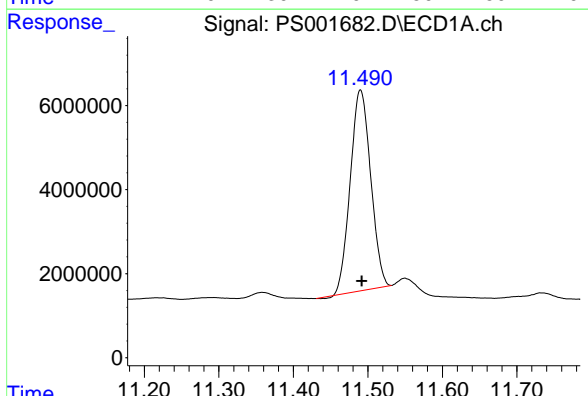
R.T.: 0.000 min  
 Exp R.T.: 2.954 min  
 Response: 0  
 Conc: N.D.

Instrument :  
 ECD\_S  
 ClientSampleId :



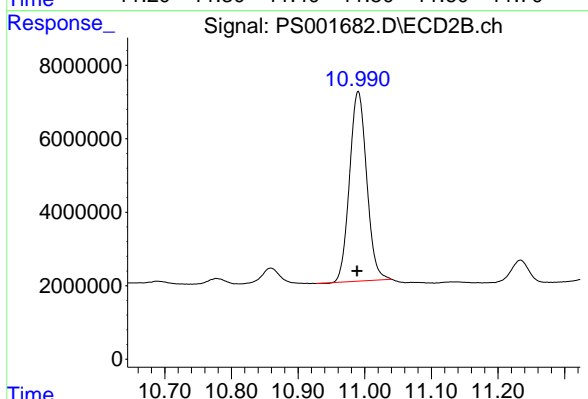
#1 Dalapon

R.T.: 2.395 min  
 Delta R.T.: -0.019 min  
 Response: 13185259  
 Conc: 55.09 ng/ml



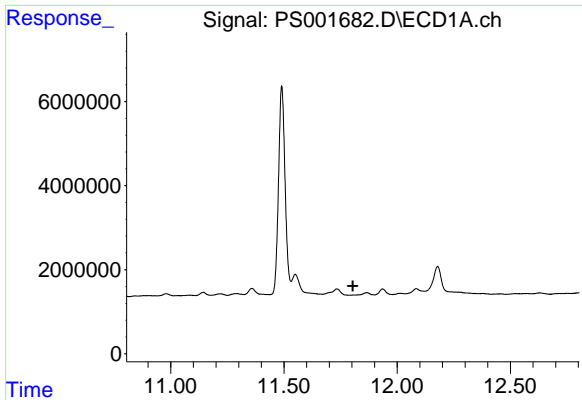
#4 2,4-DCAA

R.T.: 11.490 min  
 Delta R.T.: -0.002 min  
 Response: 90904653  
 Conc: 492.44 ng/ml



#4 2,4-DCAA

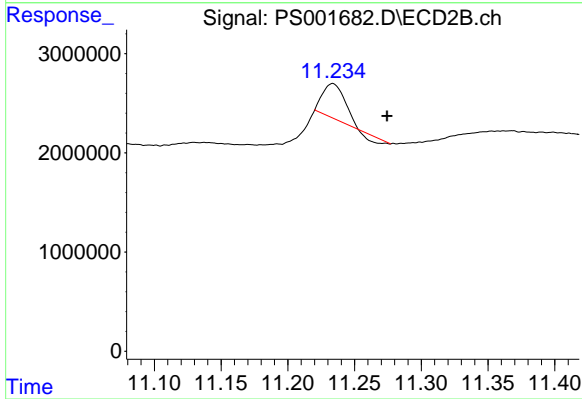
R.T.: 10.990 min  
 Delta R.T.: 0.001 min  
 Response: 92207572  
 Conc: 455.28 ng/ml



#5 DICAMBA

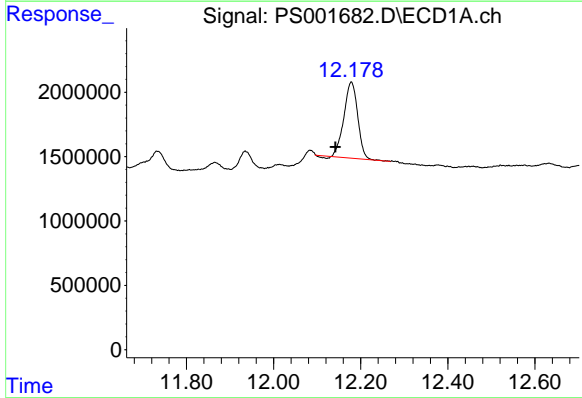
R.T.: 0.000 min  
 Exp R.T.: 11.805 min  
 Response: 0  
 Conc: N.D.

Instrument :  
 ECD\_S  
 ClientSampleId :



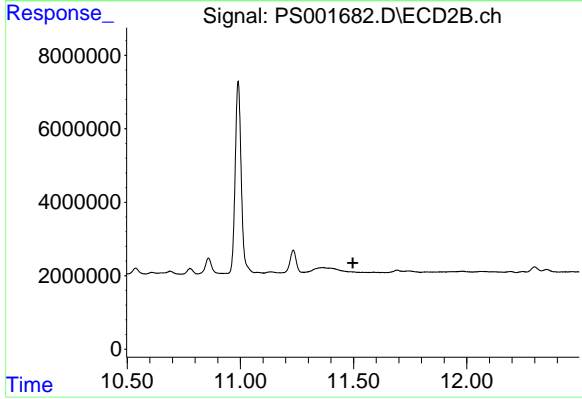
#5 DICAMBA

R.T.: 11.234 min  
 Delta R.T.: -0.041 min  
 Response: 3550037  
 Conc: 5.06 ng/ml



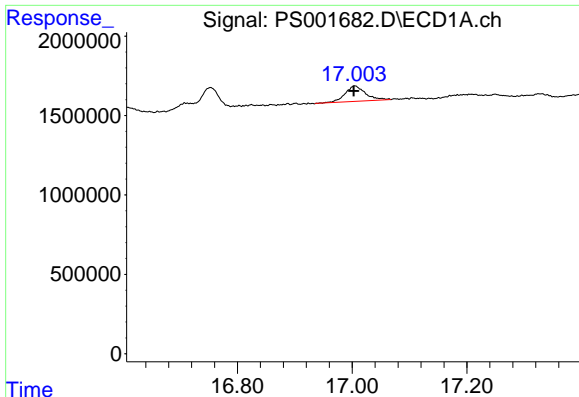
#6 MCPP

R.T.: 12.178 min  
 Delta R.T.: 0.037 min  
 Response: 12963439  
 Conc: 25.76 ug/ml



#6 MCPP

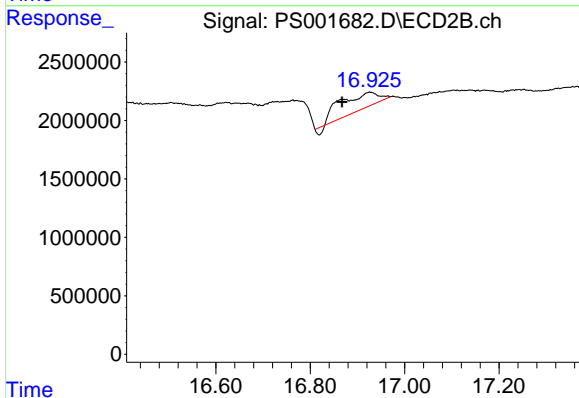
R.T.: 0.000 min  
 Exp R.T.: 11.497 min  
 Response: 0  
 Conc: N.D.



#15 Picloram

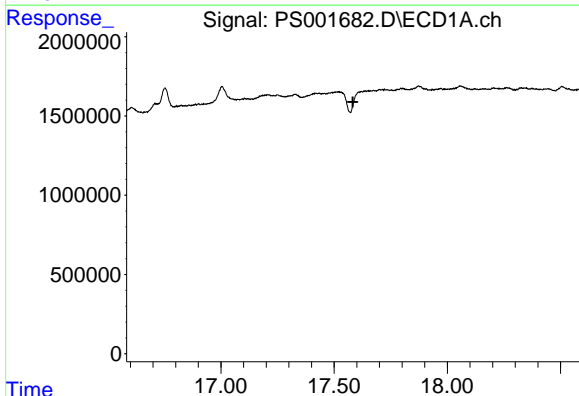
R.T.: 17.005 min  
 Delta R.T.: 0.002 min  
 Response: 2404773  
 Conc: 1.72 ng/ml

Instrument :  
 ECD\_S  
 ClientSampled :



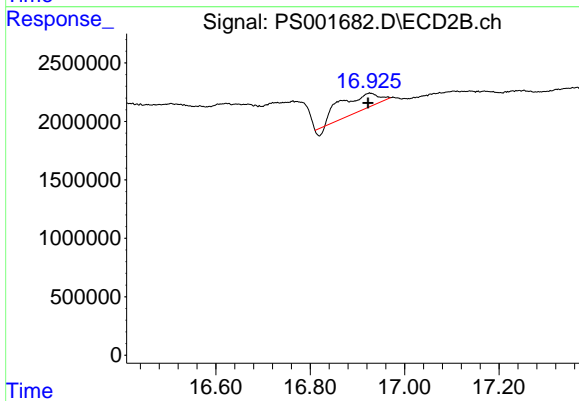
#15 Picloram

R.T.: 16.926 min  
 Delta R.T.: 0.059 min  
 Response: 7766980  
 Conc: 5.96 ng/ml



#16 DCPA

R.T.: 0.000 min  
 Exp R.T. : 17.583 min  
 Response: 0  
 Conc: N.D.



#16 DCPA

R.T.: 16.926 min  
 Delta R.T.: 0.004 min  
 Response: 7766980  
 Conc: 5.44 ng/ml