

Data Path : Z:\pestpcbsrv\HPCHEM1\ECD_S\Data\PS091019\
 Data File : PS006658.D
 Signal(s) : Signal #1: ECD1A.ch Signal #2: ECD2B.ch
 Acq On : 10 Sep 2019 09:12
 Operator : SM\AJ
 Sample : HSTDCCC750
 Misc :
 ALS Vial : 3 Sample Multiplier: 1

Instrument :
 ECD_S
ClientSampled :
 HSTDCCC750

Manual Integrations
APPROVED
 Ankita
 9/11/2019 9:09:05 AM

Integration File signal 1: autoint1.e
 Integration File signal 2: autoint2.e
 Quant Time: Sep 11 03:12:36 2019
 Quant Method : Z:\pestpcbsrv\HPCHEM1\ECD_S\Method\PS090919.M
 Quant Title : 8080.M
 QLast Update : Tue Sep 10 06:14:42 2019
 Response via : Initial Calibration
 Integrator: ChemStation

Volume Inj. : 2 µl
 Signal #1 Phase : Rtx-CLPesticides Signal #2 Phase: Rtx-CLPesticides2
 Signal #1 Info : 30M x 0.32mm x0.5 Signal #2 Info : 30M x 0.32mm x 0.25µm

Compound	RT#1	RT#2	Resp#1	Resp#2	ng/ml	ng/ml

System Monitoring Compounds						
4) S 2,4-DCAA	5.483	5.213	614.6E6	339.0E6	791.123	793.866
Target Compounds						
1) T Dalapon	2.053	1.762	723.0E6	353.6E6	739.747	691.964
2) T 3,5-DICHL...	4.850	4.516	733.3E6	396.2E6	740.689	731.962
3) T 4-Nitroph...	5.335	4.898	254.8E6	158.8E6	718.058	717.403
5) T DICAMBA	5.636	5.341	2198.1E6	1207.8E6	762.450	753.368
6) T MCPP	5.788	5.424	153.5E6	82994057	80.684	78.421
7) T MCPA	5.921	5.602	219.3E6	126.8E6	77.610	72.266
8) T DICHLORPROP	6.263	5.879	532.9E6	290.1E6	749.400	745.498
9) T 2,4-D	6.478	6.150	608.2E6	357.7E6	787.187	749.885
10) T Pentachlo...	6.740	6.517	8472.4E6	4526.7E6	760.549	751.314
11) T 2,4,5-TP ...	7.273	6.879	3257.9E6	1708.2E6	757.121	750.387
12) T 2,4,5-T	7.546	7.238	3484.9E6	1692.9E6	747.891	785.123m
13) T 2,4-DB	8.075	7.725	471.5E6	218.5E6	774.831	794.843
14) T DINOSEB	9.166	8.035	2623.3E6	1263.2E6	753.650	754.010
15) T Picloram	8.997	8.972	5463.4E6	2933.5E6	809.903	792.716
16) T DCPA	9.438	8.931	4330.3E6	2372.6E6	766.539	753.138

(f)=RT Delta > 1/2 Window (#)=Amounts differ by > 25% (m)=manual int.

Data Path : Z:\pestpcbsrv\HPCHEM1\ECD_S\Data\PS091019\
 Data File : PS006658.D
 Signal(s) : Signal #1: ECD1A.ch Signal #2: ECD2B.ch
 Acq On : 10 Sep 2019 09:12
 Operator : SM\AJ
 Sample : HSTDCCC750
 Misc :
 ALS Vial : 3 Sample Multiplier: 1

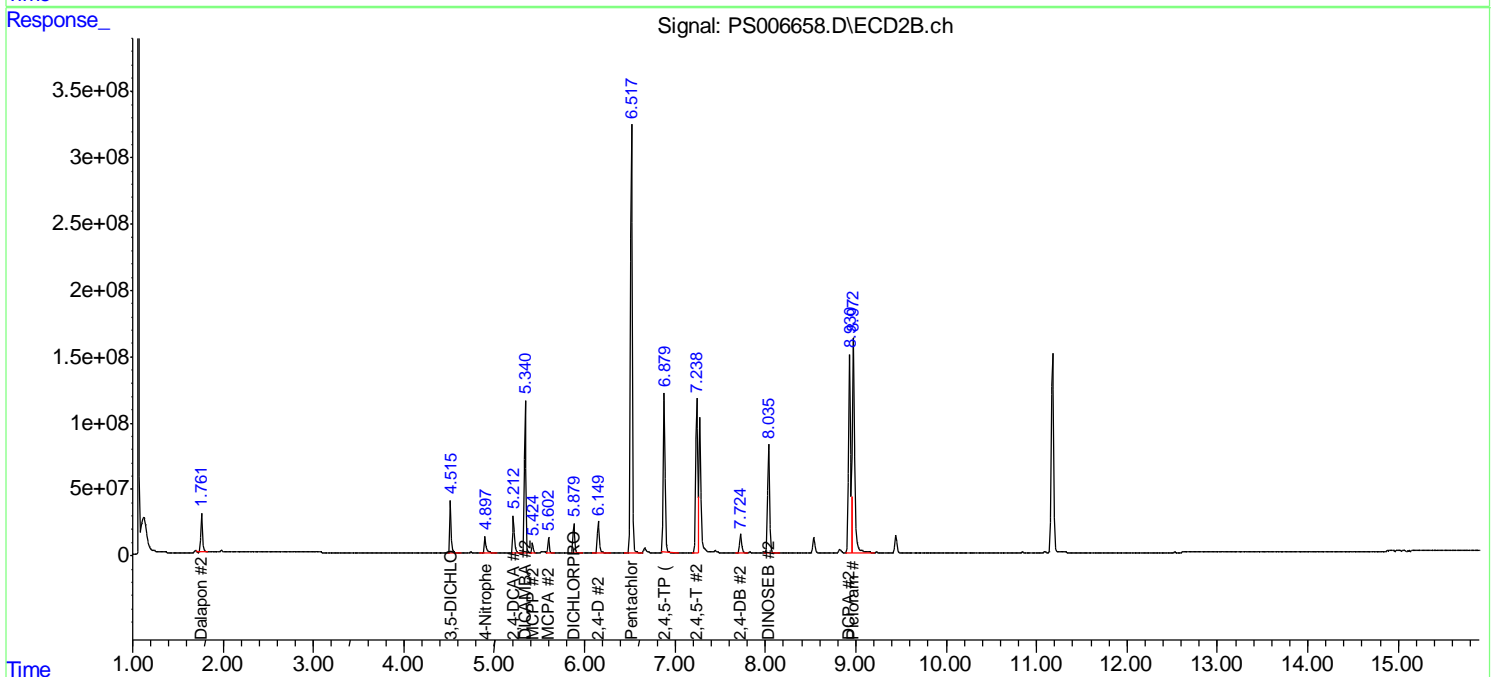
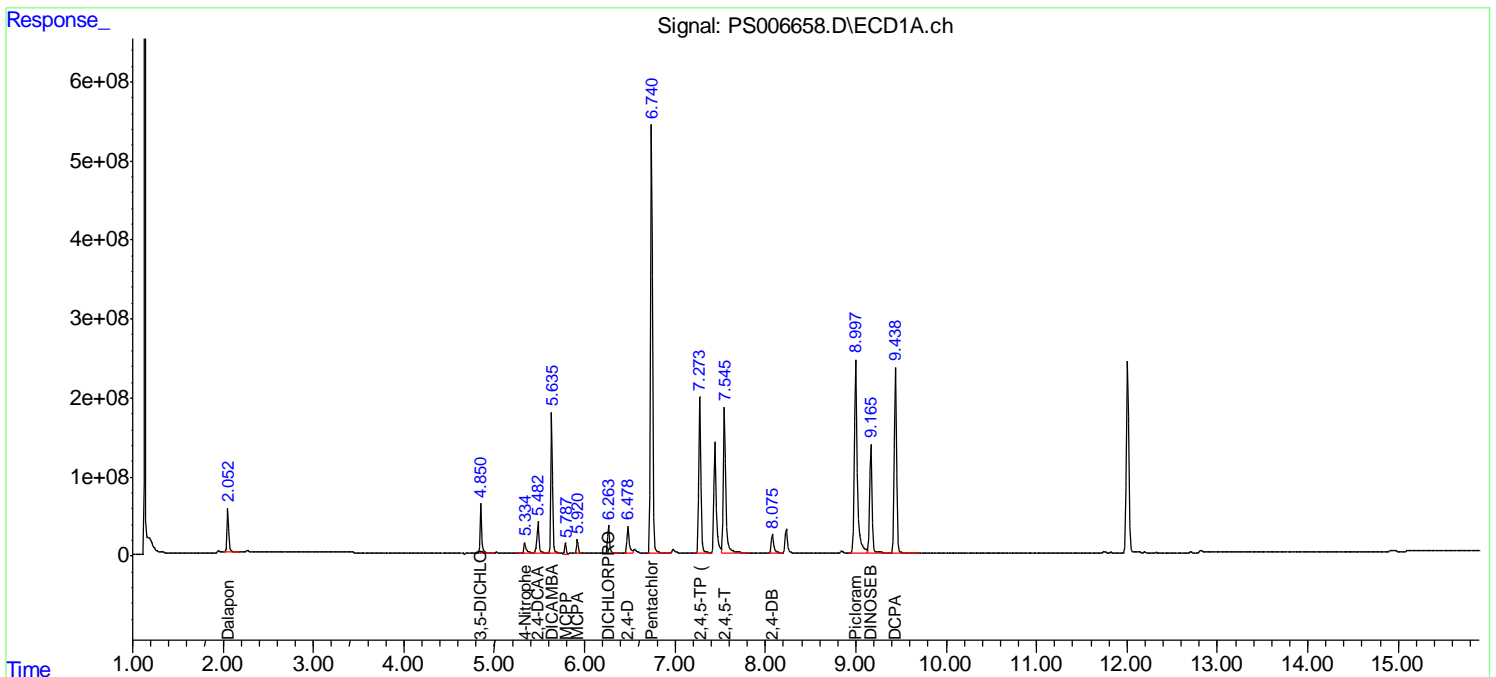
Instrument :
 ECD_S
 Client Sampled :
 HSTDCCC750

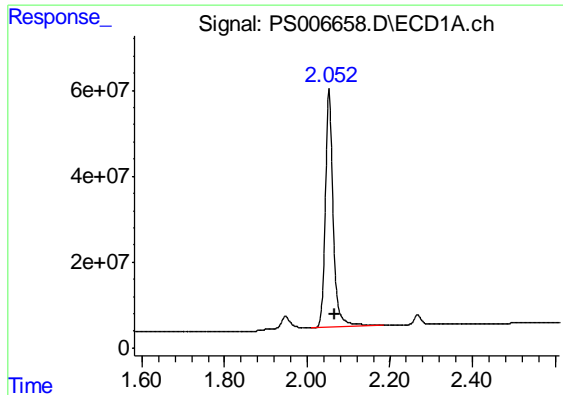
Manual Integrations
 APPROVED

Ankita
 9/11/2019 9:09:05 AM

Integration File signal 1: autoint1.e
 Integration File signal 2: autoint2.e
 Quant Time: Sep 11 03:12:36 2019
 Quant Method : Z:\pestpcbsrv\HPCHEM1\ECD_S\Method\PS090919.M
 Quant Title : 8080.M
 QLast Update : Tue Sep 10 06:14:42 2019
 Response via : Initial Calibration
 Integrator: ChemStation

Volume Inj. : 2 µl
 Signal #1 Phase : Rtx-CLPesticides Signal #2 Phase: Rtx-CLPesticides2
 Signal #1 Info : 30M x 0.32mm x0.5 Signal #2 Info : 30M x 0.32mm x 0.25µm





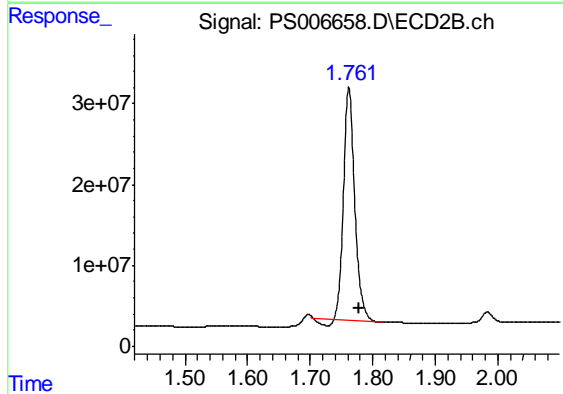
#1 Dalapon

R.T.: 2.053 min
 Delta R.T.: -0.015 min
 Response: 723028791
 Conc: 739.75 ng/ml

Instrument :
 ECD_S
 ClientSampled :
 HSTDCCC750

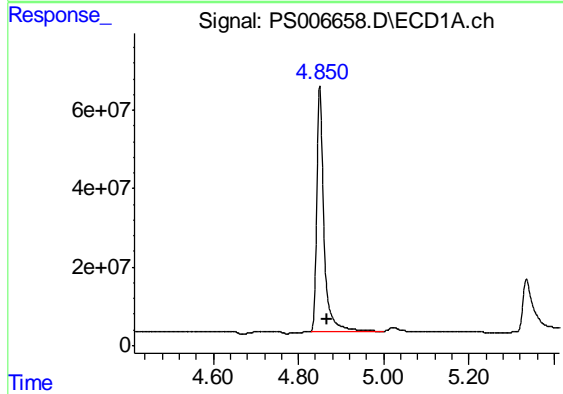
Manual Integrations
 APPROVED

Ankita
 9/11/2019 9:09:05 AM



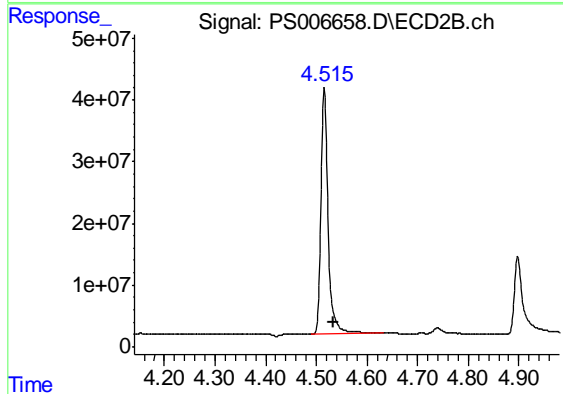
#1 Dalapon

R.T.: 1.762 min
 Delta R.T.: -0.015 min
 Response: 353627158
 Conc: 691.96 ng/ml



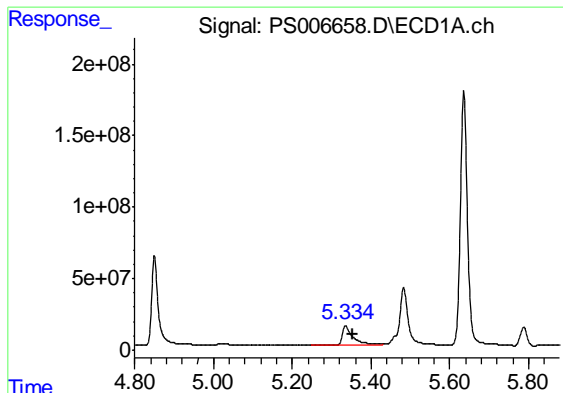
#2 3,5-DICHLOROBENZOIC ACID

R.T.: 4.850 min
 Delta R.T.: -0.018 min
 Response: 733267246
 Conc: 740.69 ng/ml



#2 3,5-DICHLOROBENZOIC ACID

R.T.: 4.516 min
 Delta R.T.: -0.018 min
 Response: 396175836
 Conc: 731.96 ng/ml



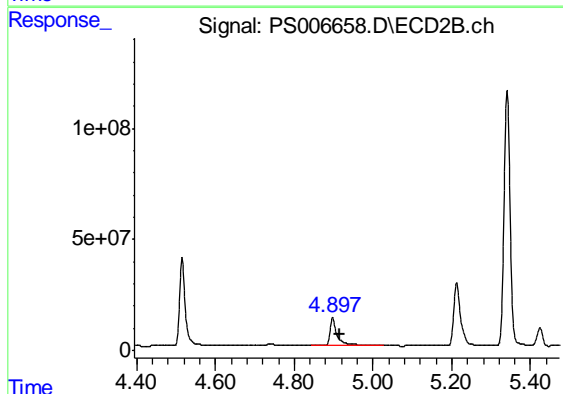
#3 4-Nitrophenol

R.T.: 5.335 min
Delta R.T.: -0.017 min
Response: 254817198
Conc: 718.06 ng/ml

Instrument :
ECD_S
ClientSampleId :
HSTDCCC750

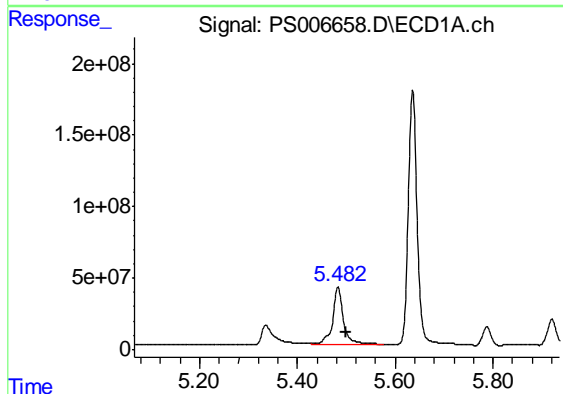
Manual Integrations
APPROVED

Ankita
9/11/2019 9:09:05 AM



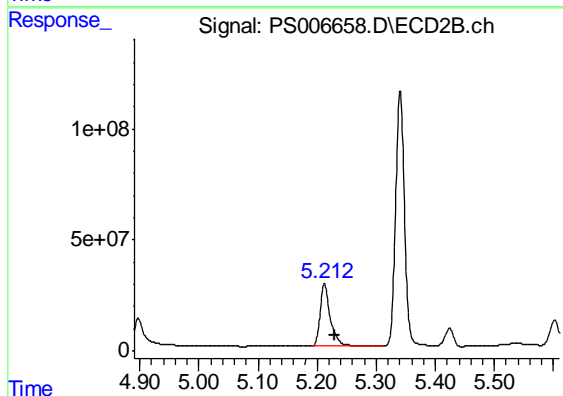
#3 4-Nitrophenol

R.T.: 4.898 min
Delta R.T.: -0.018 min
Response: 158797082
Conc: 717.40 ng/ml



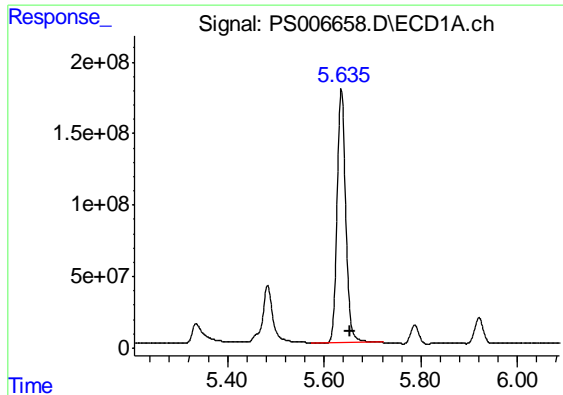
#4 2,4-DCAA

R.T.: 5.483 min
Delta R.T.: -0.018 min
Response: 614611662
Conc: 791.12 ng/ml



#4 2,4-DCAA

R.T.: 5.213 min
Delta R.T.: -0.018 min
Response: 338982745
Conc: 793.87 ng/ml



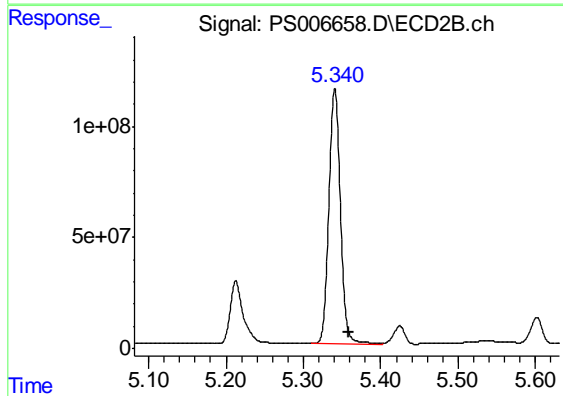
#5 DICAMBA

R.T.: 5.636 min
 Delta R.T.: -0.018 min
 Response: 2198081373
 Conc: 762.45 ng/ml

Instrument :
 ECD_S
 ClientSampled :
 HSTDCCC750

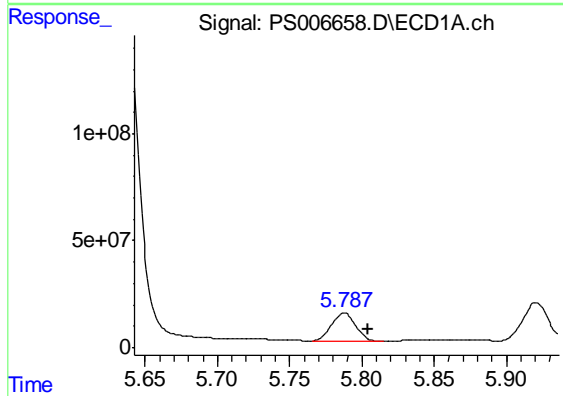
Manual Integrations
 APPROVED

Ankita
 9/11/2019 9:09:05 AM



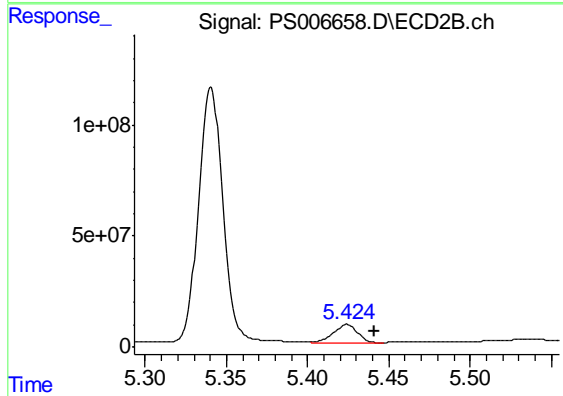
#5 DICAMBA

R.T.: 5.341 min
 Delta R.T.: -0.018 min
 Response: 1207814417
 Conc: 753.37 ng/ml



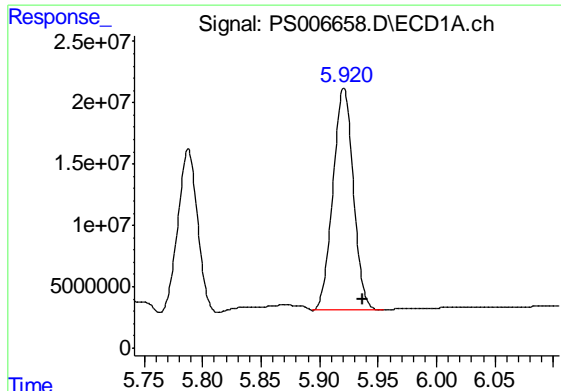
#6 MCPP

R.T.: 5.788 min
 Delta R.T.: -0.017 min
 Response: 153486131
 Conc: 80.68 ug/ml



#6 MCPP

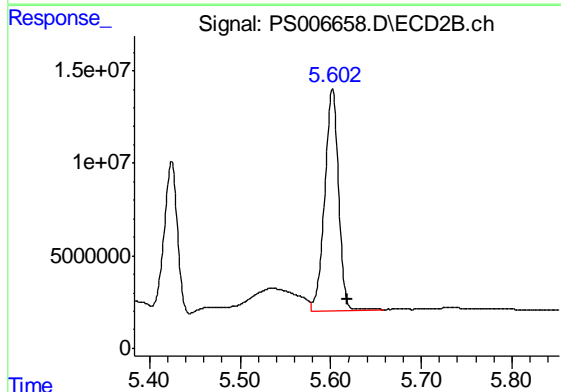
R.T.: 5.424 min
 Delta R.T.: -0.017 min
 Response: 82994057
 Conc: 78.42 ug/ml



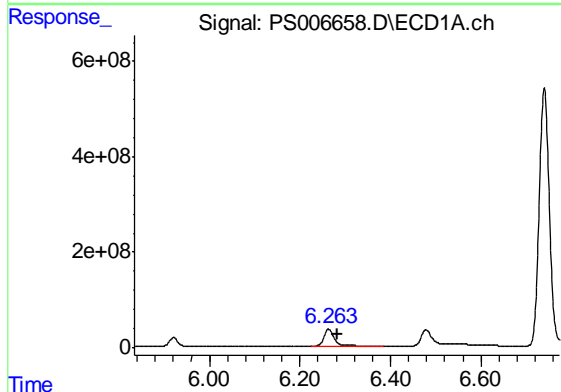
#7 MCPA
 R.T.: 5.921 min
 Delta R.T.: -0.016 min
 Response: 219346043
 Conc: 77.61 ug/ml

Instrument :
 ECD_S
ClientSampled :
 HSTDCCC750

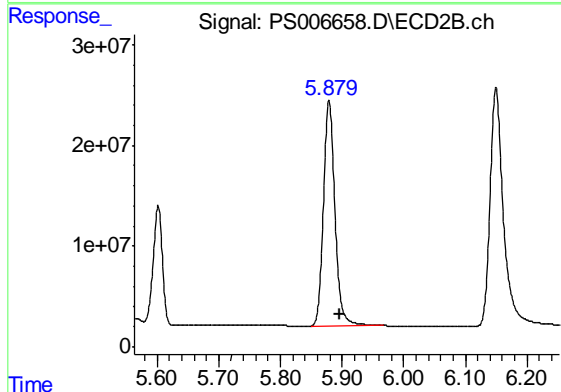
Manual Integrations
APPROVED
 Ankita
 9/11/2019 9:09:05 AM



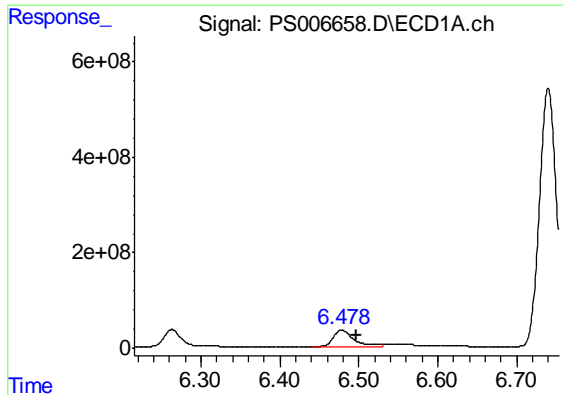
#7 MCPA
 R.T.: 5.602 min
 Delta R.T.: -0.017 min
 Response: 126754001
 Conc: 72.27 ug/ml



#8 DICHLORPROP
 R.T.: 6.263 min
 Delta R.T.: -0.018 min
 Response: 532949801
 Conc: 749.40 ng/ml



#8 DICHLORPROP
 R.T.: 5.879 min
 Delta R.T.: -0.018 min
 Response: 290136863
 Conc: 745.50 ng/ml



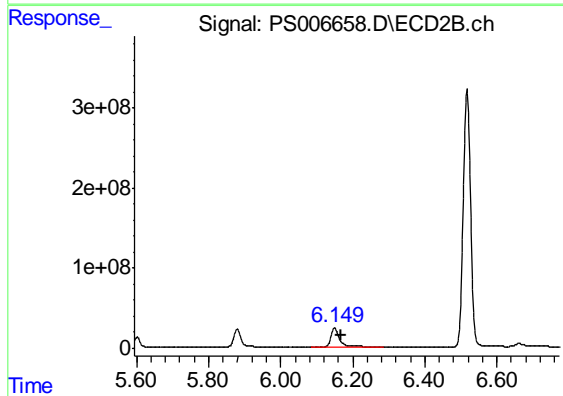
#9 2,4-D

R.T.: 6.478 min
Delta R.T.: -0.019 min
Response: 608198617
Conc: 787.19 ng/ml

Instrument :
ECD_S
ClientSampleId :
HSTDCCC750

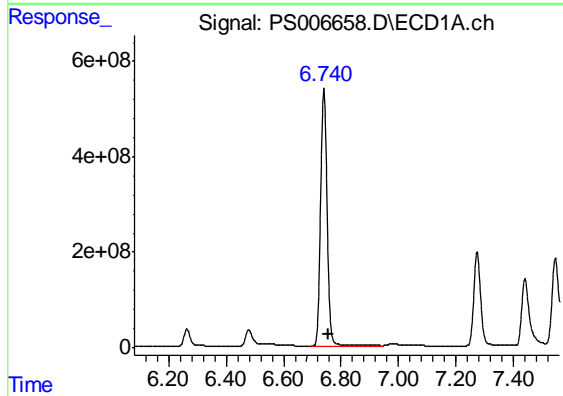
Manual Integrations
APPROVED

Ankita
9/11/2019 9:09:05 AM



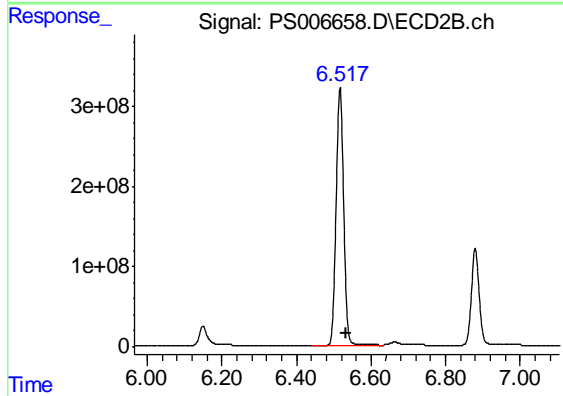
#9 2,4-D

R.T.: 6.150 min
Delta R.T.: -0.019 min
Response: 357686503
Conc: 749.89 ng/ml



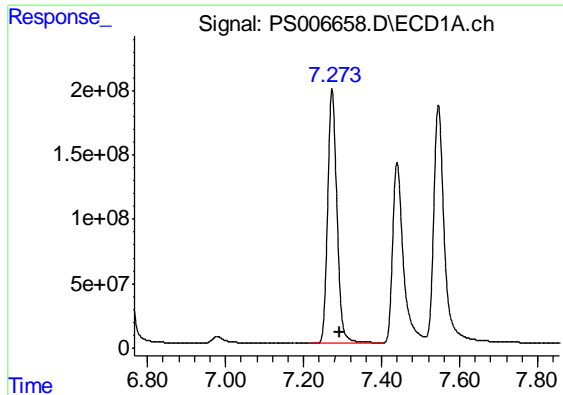
#10 Pentachlorophenol

R.T.: 6.740 min
Delta R.T.: -0.017 min
Response: 8472438495
Conc: 760.55 ng/ml



#10 Pentachlorophenol

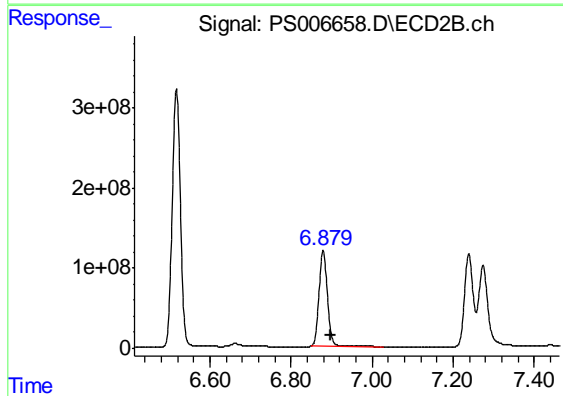
R.T.: 6.517 min
Delta R.T.: -0.018 min
Response: 4526659419
Conc: 751.31 ng/ml



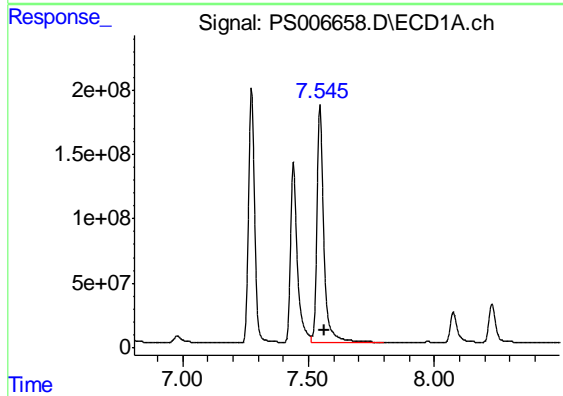
#11 2,4,5-TP (SILVEX)
 R.T.: 7.273 min
 Delta R.T.: -0.018 min
 Response: 3257900538
 Conc: 757.12 ng/ml

Instrument :
 ECD_S
 ClientSampled :
 HSTDCCC750

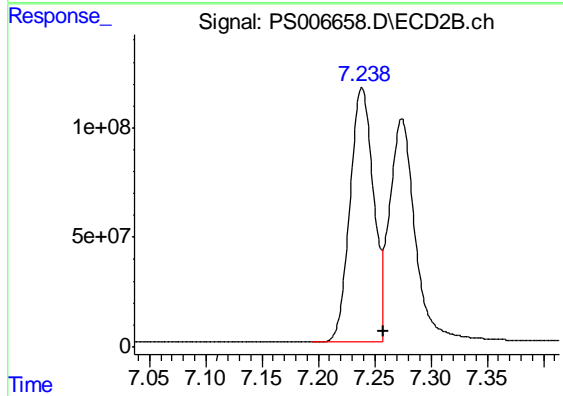
Manual Integrations
 APPROVED
 Ankita
 9/11/2019 9:09:05 AM



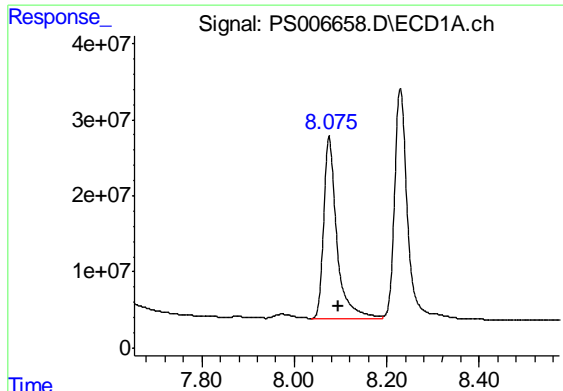
#11 2,4,5-TP (SILVEX)
 R.T.: 6.879 min
 Delta R.T.: -0.019 min
 Response: 1708203870
 Conc: 750.39 ng/ml



#12 2,4,5-T
 R.T.: 7.546 min
 Delta R.T.: -0.020 min
 Response: 3484902838
 Conc: 747.89 ng/ml



#12 2,4,5-T
 R.T.: 7.238 min
 Delta R.T.: -0.019 min
 Response: 1692851135
 Conc: 785.12 ng/ml m

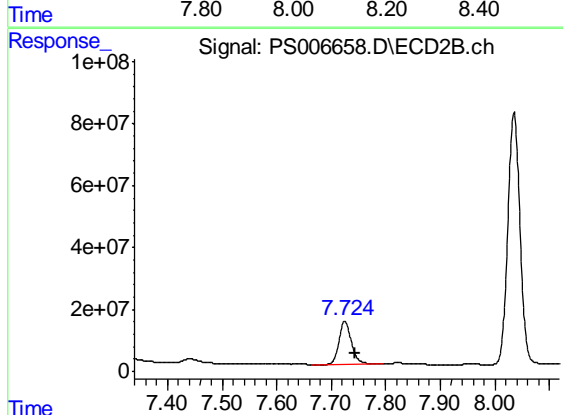


#13 2,4-DB

R.T.: 8.075 min
 Delta R.T.: -0.020 min
 Response: 471526253
 Conc: 774.83 ng/ml

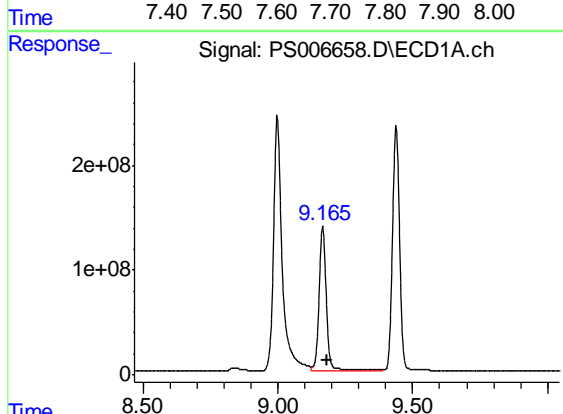
Instrument :
 ECD_S
ClientSampled :
 HSTDCCC750

Manual Integrations
APPROVED
 Ankita
 9/11/2019 9:09:05 AM



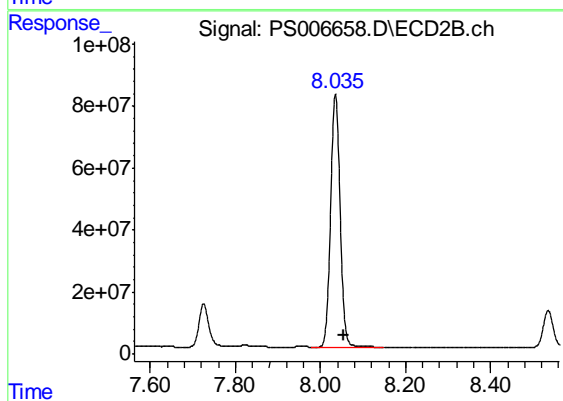
#13 2,4-DB

R.T.: 7.725 min
 Delta R.T.: -0.019 min
 Response: 218543616
 Conc: 794.84 ng/ml



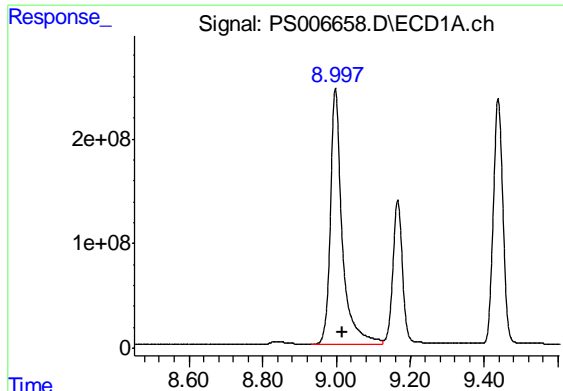
#14 DINOSEB

R.T.: 9.166 min
 Delta R.T.: -0.018 min
 Response: 2623319846
 Conc: 753.65 ng/ml



#14 DINOSEB

R.T.: 8.035 min
 Delta R.T.: -0.019 min
 Response: 1263228197
 Conc: 754.01 ng/ml

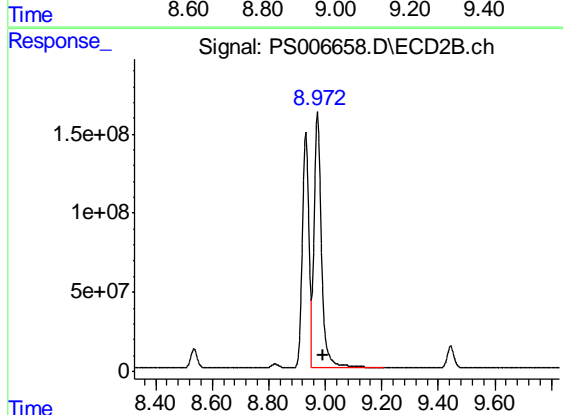


#15 Picloram

R.T.: 8.997 min
 Delta R.T.: -0.020 min
 Response: 5463361585
 Conc: 809.90 ng/ml

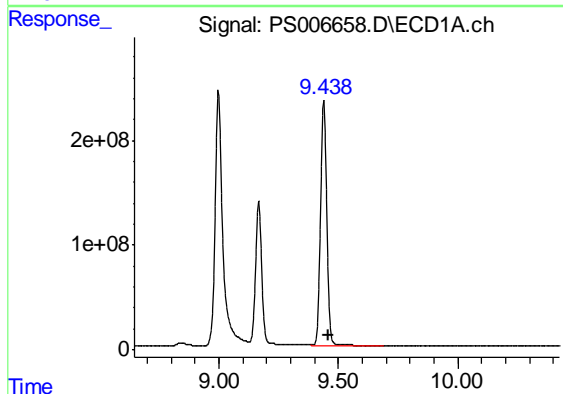
Instrument :
 ECD_S
ClientSampled :
 HSTDCCC750

Manual Integrations
APPROVED
 Ankita
 9/11/2019 9:09:05 AM



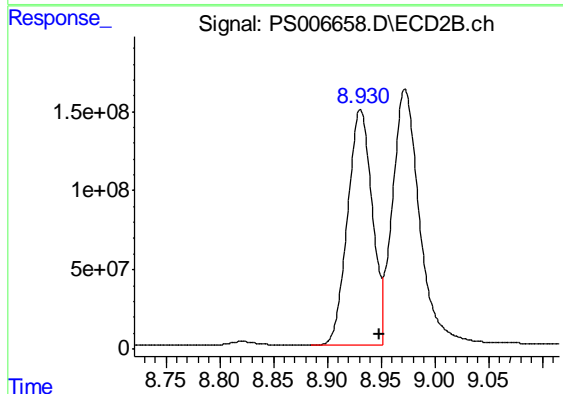
#15 Picloram

R.T.: 8.972 min
 Delta R.T.: -0.019 min
 Response: 2933537698
 Conc: 792.72 ng/ml



#16 DCPA

R.T.: 9.438 min
 Delta R.T.: -0.018 min
 Response: 4330301121
 Conc: 766.54 ng/ml



#16 DCPA

R.T.: 8.931 min
 Delta R.T.: -0.018 min
 Response: 2372556971
 Conc: 753.14 ng/ml