

Data Path : Z:\pestpcbsrv\HPCHEM1\ECD_S\Data\PS091020\
 Data File : PS012204.D
 Signal(s) : Signal #1: ECD1A.ch Signal #2: ECD2B.ch
 Acq On : 10 Sep 2020 16:54
 Operator : DD\AJ
 Sample : PB131518BS
 Misc :
 ALS Vial : 10 Sample Multiplier: 1

Instrument :
 ECD_S
 ClientSampleId :

Integration File signal 1: autoint1.e
 Integration File signal 2: autoint2.e
 Quant Time: Sep 10 18:57:43 2020
 Quant Method : Z:\pestpcbsrv\HPCHEM1\ECD_S\Method\PS081120.M
 Quant Title : 8080.M
 QLast Update : Tue Aug 11 15:43:16 2020
 Response via : Initial Calibration
 Integrator: ChemStation

Volume Inj. : 2 µl
 Signal #1 Phase : Rtx-CLPesticides Signal #2 Phase: Rtx-CLPesticides2
 Signal #1 Info : 30M x 0.32mm x0.5 Signal #2 Info : 30M x 0.32mm x 0.25µm

	Compound	RT#1	RT#2	Resp#1	Resp#2	ng/ml	ng/ml

System Monitoring Compounds							
4) S	2,4-DCAA	7.216	6.913	567.9E6	346.8E6	520.642	648.396
Target Compounds							
1) T	Dalapon	3.033	2.626	642.3E6	358.9E6	515.596	474.784
2) T	3,5-DICHL...	6.431	6.065	836.8E6	443.5E6	577.180	539.086
3) T	4-Nitroph...	7.048	6.522	255.8E6	143.5E6	434.271	393.583
5) T	DICAMBA	7.406	7.081	2208.7E6	1195.8E6	539.228	553.476
6) T	MCP P	7.574	7.176	181.7E6	98031982	56.859	55.466
7) T	MCPA	7.724	7.391	243.9E6	167.9E6	53.625	61.275
8) T	DICHLORPROP	8.097	7.706	568.8E6	327.8E6	566.178	580.556
9) T	2,4-D	8.328	8.002	705.9E6	455.3E6	625.174	619.686
10) T	Pentachlo...	8.637	8.430	8661.0E6	4186.5E6	602.234	616.132
11) T	2,4,5-TP ...	9.186	8.790	3453.3E6	1775.6E6	593.882	607.311
12) T	2,4,5-T	9.472	9.170	3302.9E6	1723.3E6	557.372	582.169
13) T	2,4-DB	10.025	9.676	369.8E6	236.9E6	465.431	566.328
14) T	DINOSEB	11.183	10.008	2596.0E6	1251.7E6	553.084	588.766
15) T	Picloram	11.008	10.994	3364.0E6	2163.0E6	430.415	477.229
16) T	DCPA	11.449	10.936	2803.1E6	1640.6E6	368.667	446.177

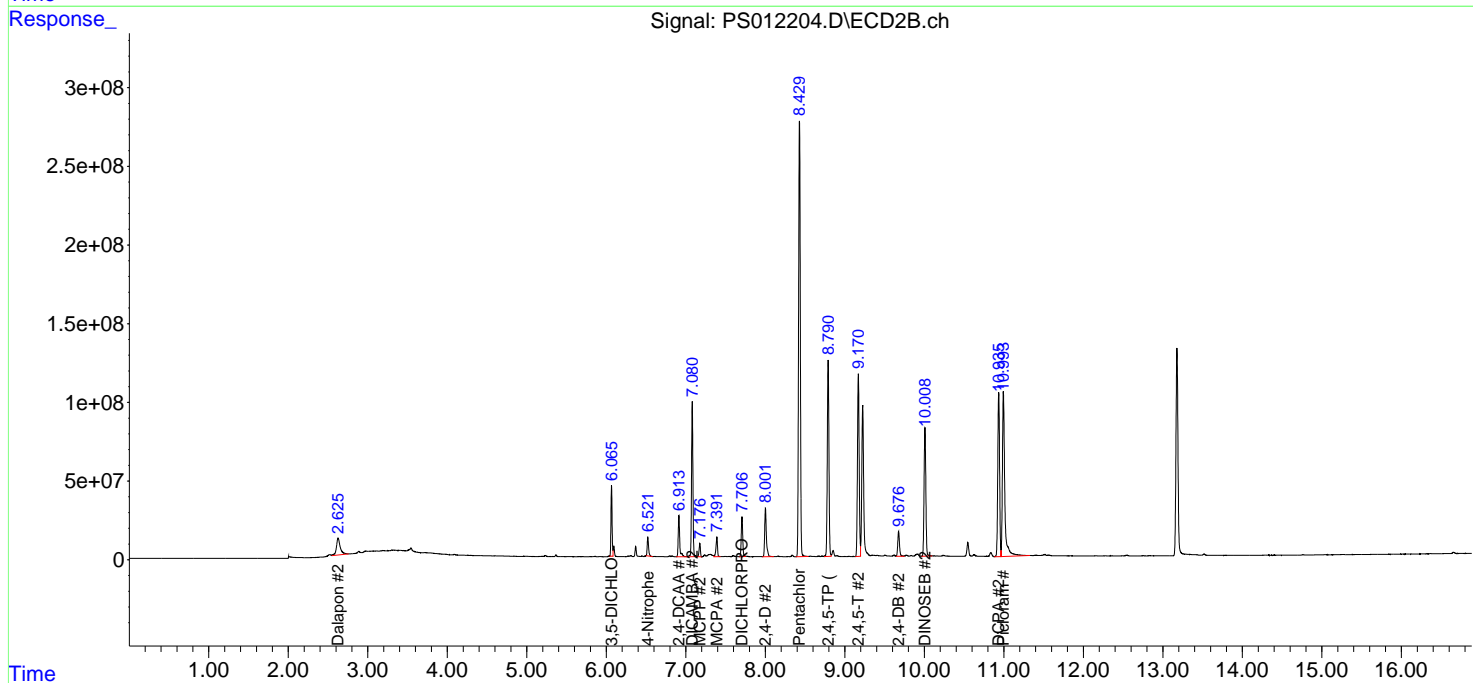
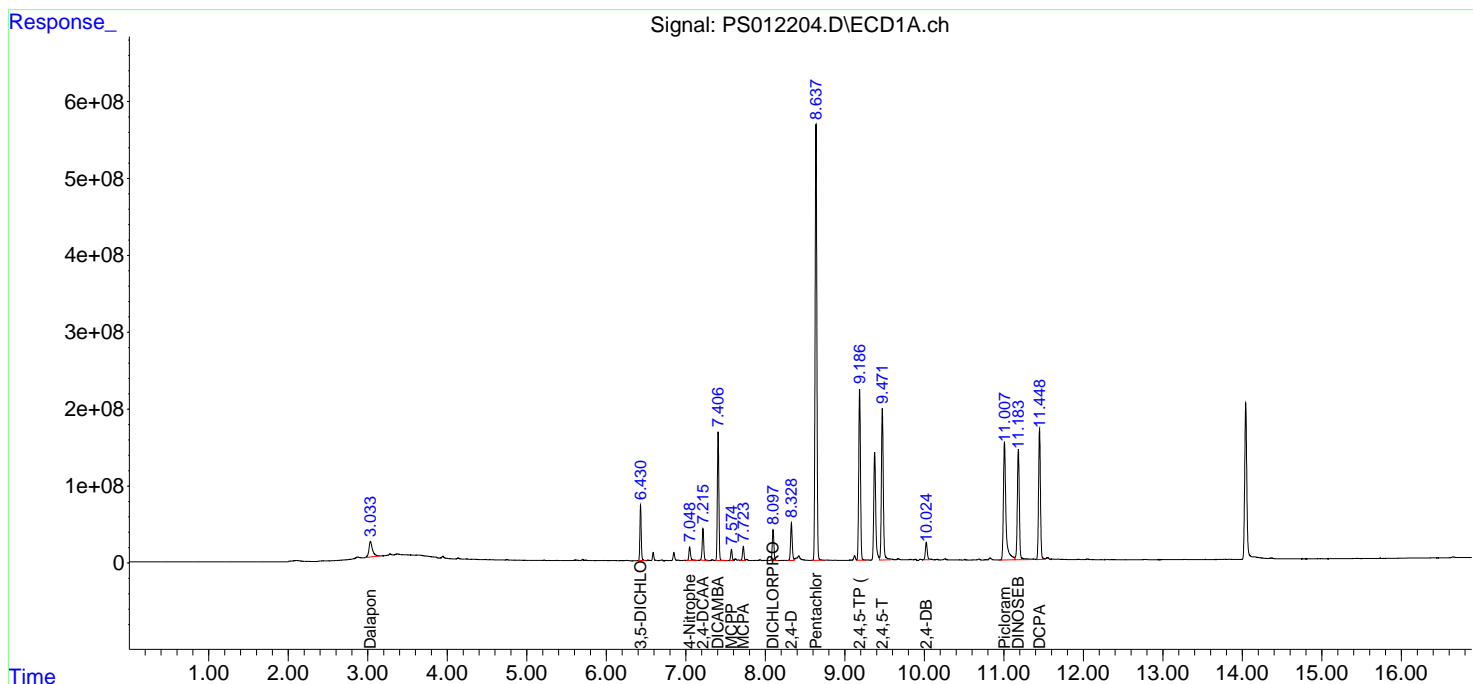
(f)=RT Delta > 1/2 Window (#)=Amounts differ by > 25% (m)=manual int.

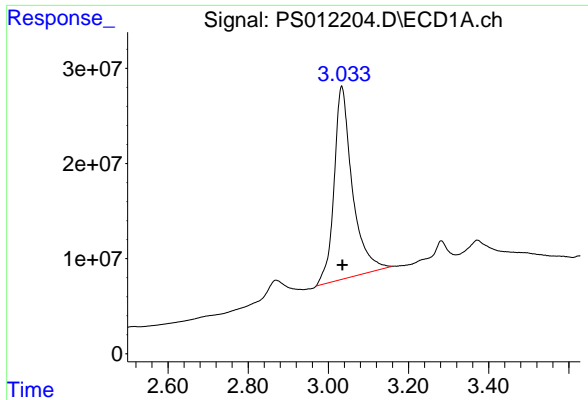
Data Path : Z:\pestpcbsrv\HPCHEM1\ECD_S\Data\PS091020\
 Data File : PS012204.D
 Signal(s) : Signal #1: ECD1A.ch Signal #2: ECD2B.ch
 Acq On : 10 Sep 2020 16:54
 Operator : DD\AJ
 Sample : PB131518BS
 Misc :
 ALS Vial : 10 Sample Multiplier: 1

Instrument :
 ECD_S
 ClientSampled :

Integration File signal 1: autoint1.e
 Integration File signal 2: autoint2.e
 Quant Time: Sep 10 18:57:43 2020
 Quant Method : Z:\pestpcbsrv\HPCHEM1\ECD_S\Method\PS081120.M
 Quant Title : 8080.M
 QLast Update : Tue Aug 11 15:43:16 2020
 Response via : Initial Calibration
 Integrator: ChemStation

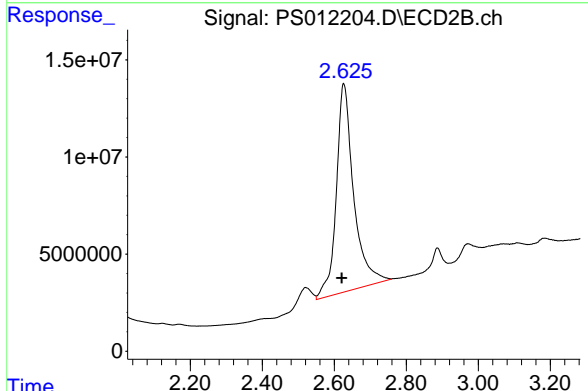
Volume Inj. : 2 µl
 Signal #1 Phase : Rtx-CLPesticides Signal #2 Phase: Rtx-CLPesticides2
 Signal #1 Info : 30M x 0.32mm x0.5 Signal #2 Info : 30M x 0.32mm x 0.25µm



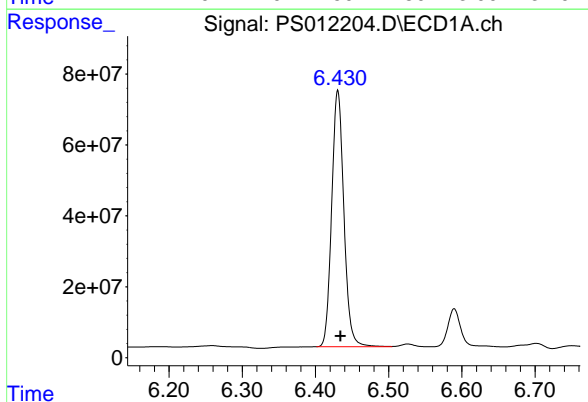


#1 Dalapon
 R.T.: 3.033 min
 Delta R.T.: -0.002 min
 Response: 642255749
 Conc: 515.60 ng/ml

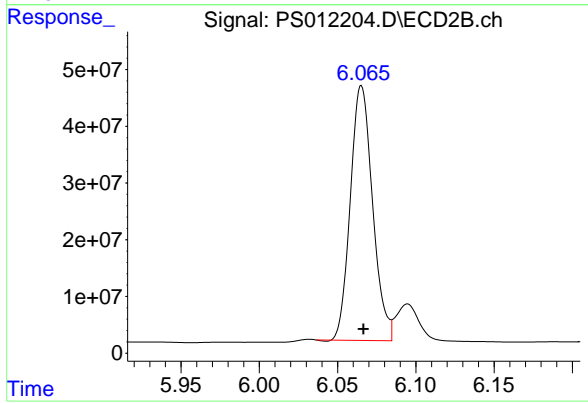
Instrument :
 ECD_S
 ClientSampled :



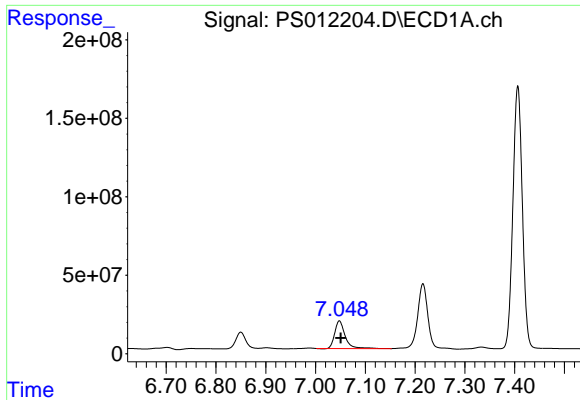
#1 Dalapon
 R.T.: 2.626 min
 Delta R.T.: 0.005 min
 Response: 358864729
 Conc: 474.78 ng/ml



#2 3,5-DICHLOROBENZOIC ACID
 R.T.: 6.431 min
 Delta R.T.: -0.003 min
 Response: 836760153
 Conc: 577.18 ng/ml

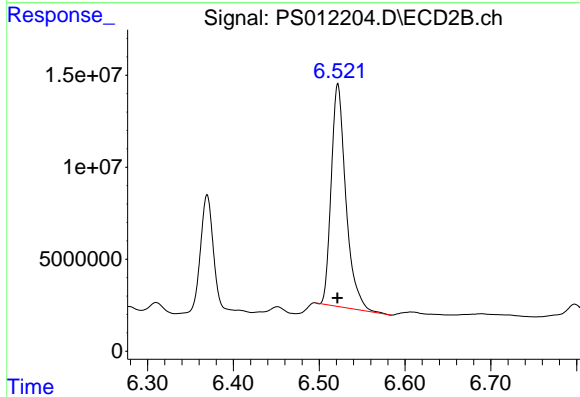


#2 3,5-DICHLOROBENZOIC ACID
 R.T.: 6.065 min
 Delta R.T.: -0.001 min
 Response: 443463277
 Conc: 539.09 ng/ml

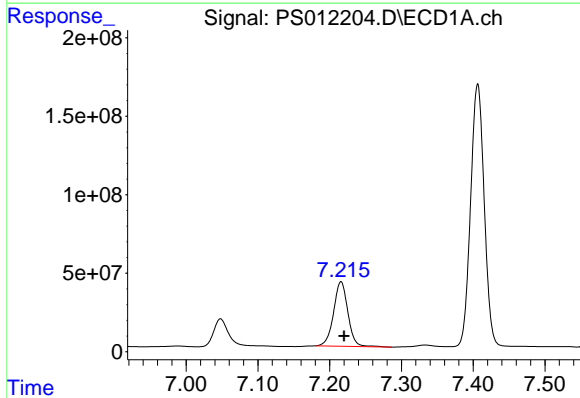


#3 4-Nitrophenol
R.T.: 7.048 min
Delta R.T.: -0.002 min
Response: 255803689
Conc: 434.27 ng/ml

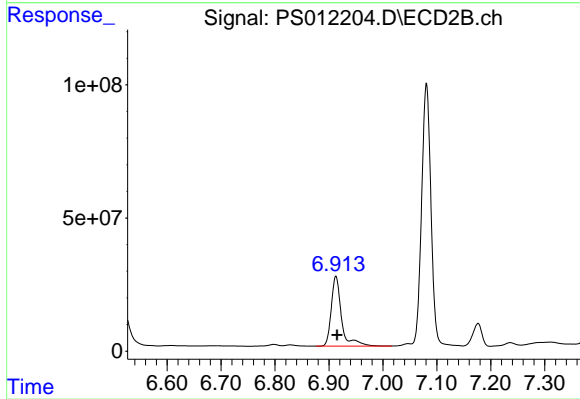
Instrument :
ECD_S
ClientSampleId :



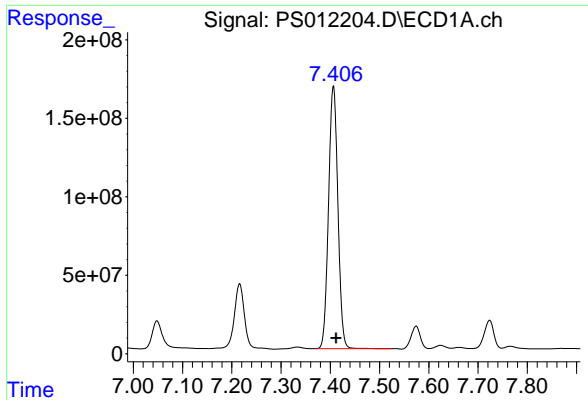
#3 4-Nitrophenol
R.T.: 6.522 min
Delta R.T.: 0.000 min
Response: 143504231
Conc: 393.58 ng/ml



#4 2,4-DCAA
R.T.: 7.216 min
Delta R.T.: -0.004 min
Response: 567900271
Conc: 520.64 ng/ml



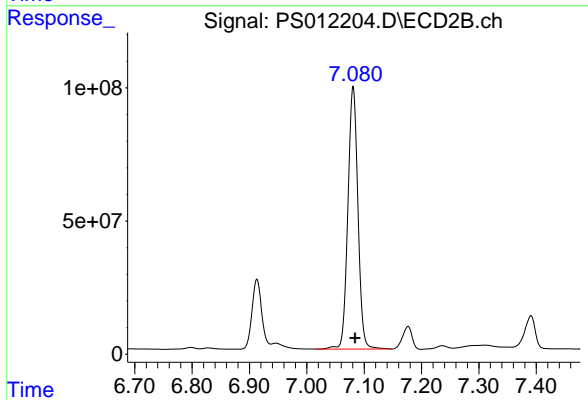
#4 2,4-DCAA
R.T.: 6.913 min
Delta R.T.: -0.002 min
Response: 346753549
Conc: 648.40 ng/ml



#5 DICAMBA

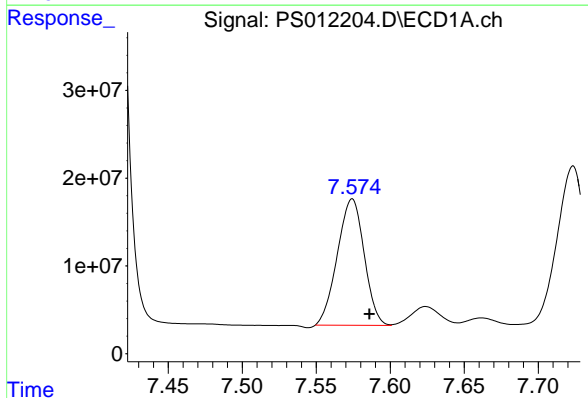
R.T.: 7.406 min
 Delta R.T.: -0.005 min
 Response: 2208668542
 Conc: 539.23 ng/ml

Instrument :
 ECD_S
 ClientSampleId :



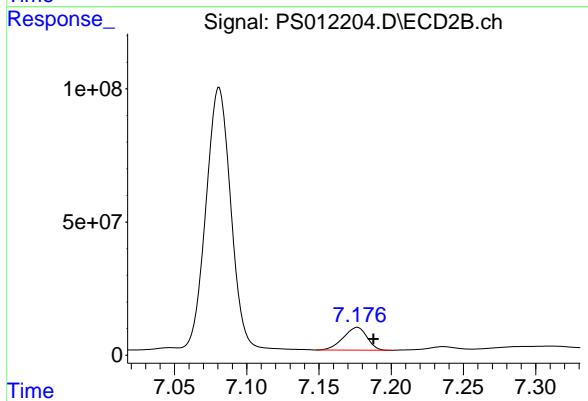
#5 DICAMBA

R.T.: 7.081 min
 Delta R.T.: -0.003 min
 Response: 1195787849
 Conc: 553.48 ng/ml



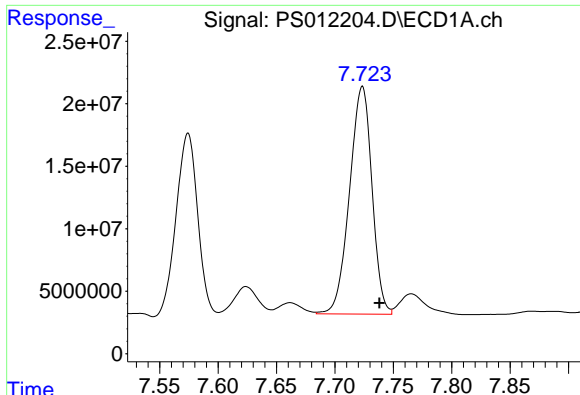
#6 MCPP

R.T.: 7.574 min
 Delta R.T.: -0.012 min
 Response: 181668471
 Conc: 56.86 ug/ml



#6 MCPP

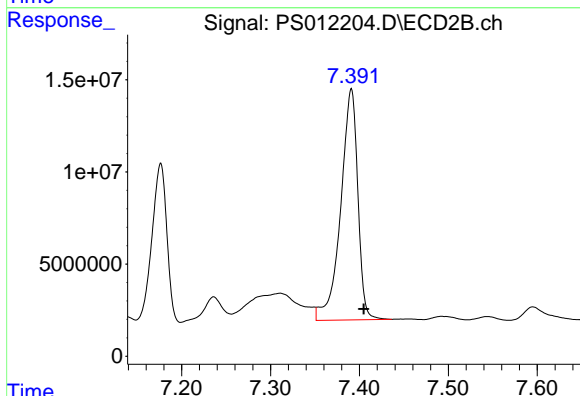
R.T.: 7.176 min
 Delta R.T.: -0.011 min
 Response: 98031982
 Conc: 55.47 ug/ml



#7 MCPA

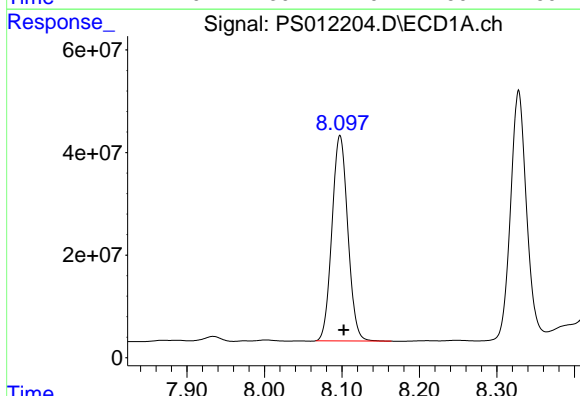
R.T.: 7.724 min
 Delta R.T.: -0.015 min
 Response: 243911037
 Conc: 53.62 ug/ml

Instrument :
 ECD_S
 ClientSampleId :



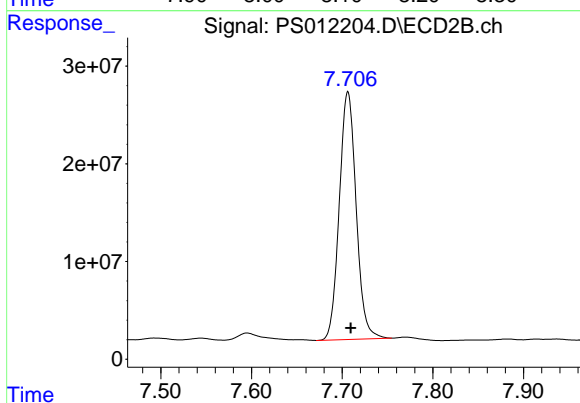
#7 MCPA

R.T.: 7.391 min
 Delta R.T.: -0.014 min
 Response: 167903301
 Conc: 61.28 ug/ml



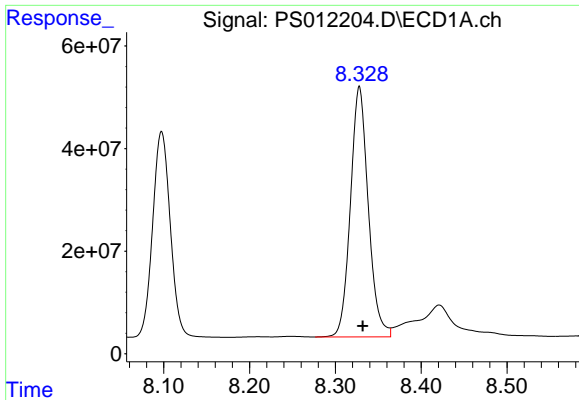
#8 DICHLORPROP

R.T.: 8.097 min
 Delta R.T.: -0.005 min
 Response: 568825858
 Conc: 566.18 ng/ml



#8 DICHLORPROP

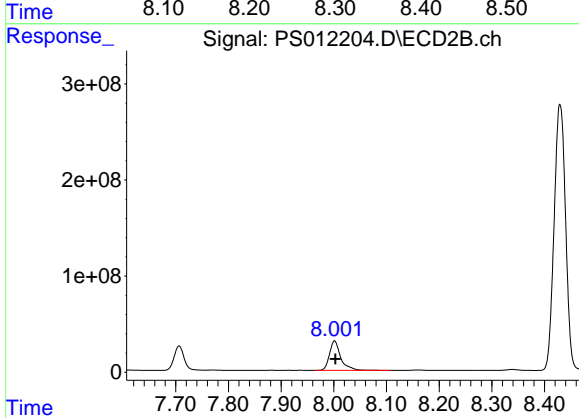
R.T.: 7.706 min
 Delta R.T.: -0.003 min
 Response: 327803038
 Conc: 580.56 ng/ml



#9 2,4-D

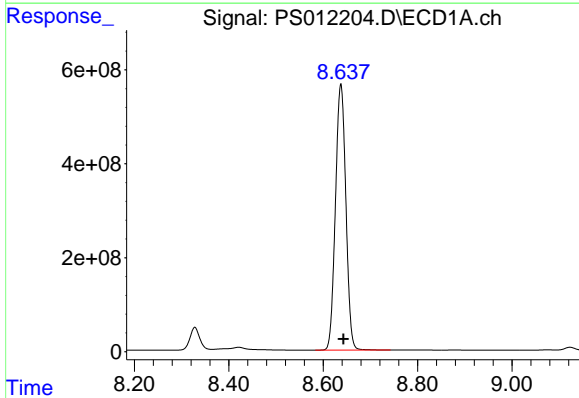
R.T.: 8.328 min
Delta R.T.: -0.004 min
Response: 705879081
Conc: 625.17 ng/ml

Instrument :
ECD_S
ClientSampleId :



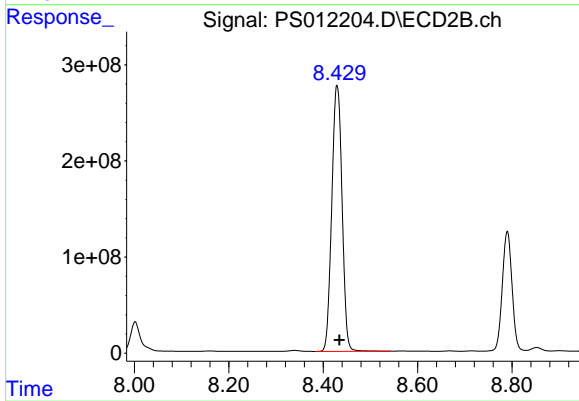
#9 2,4-D

R.T.: 8.002 min
Delta R.T.: -0.002 min
Response: 455260858
Conc: 619.69 ng/ml



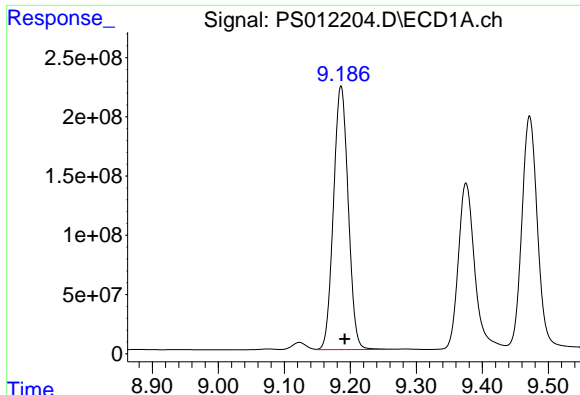
#10 Pentachlorophenol

R.T.: 8.637 min
Delta R.T.: -0.005 min
Response: 8661045233
Conc: 602.23 ng/ml



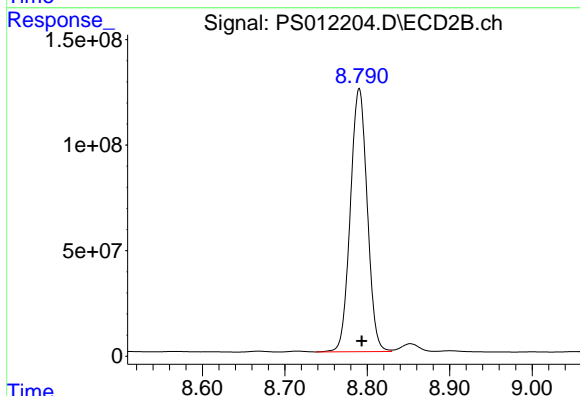
#10 Pentachlorophenol

R.T.: 8.430 min
Delta R.T.: -0.005 min
Response: 4186478698
Conc: 616.13 ng/ml

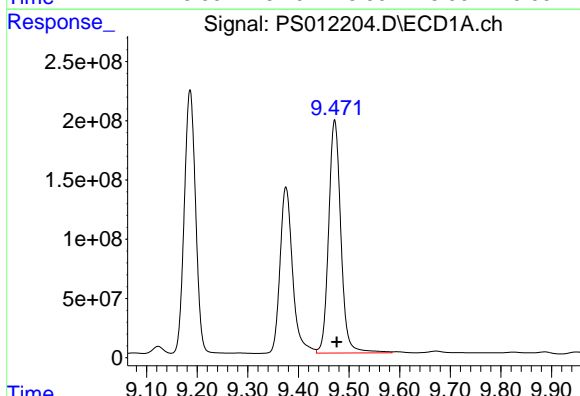


#11 2,4,5-TP (SILVEX)
 R.T.: 9.186 min
 Delta R.T.: -0.005 min
 Response: 3453302572
 Conc: 593.88 ng/ml

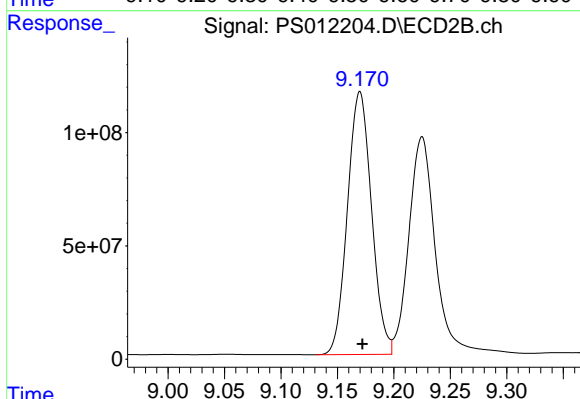
Instrument :
 ECD_S
 ClientSampleId :



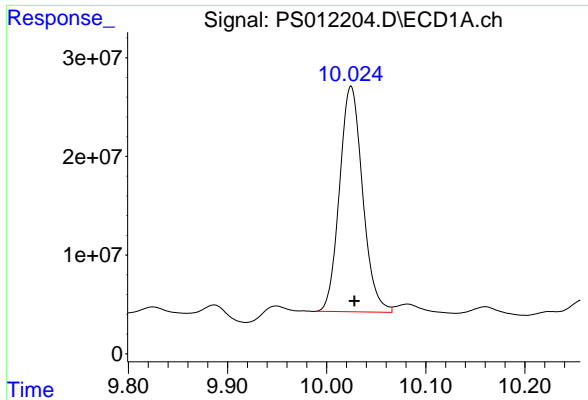
#11 2,4,5-TP (SILVEX)
 R.T.: 8.790 min
 Delta R.T.: -0.003 min
 Response: 1775564293
 Conc: 607.31 ng/ml



#12 2,4,5-T
 R.T.: 9.472 min
 Delta R.T.: -0.004 min
 Response: 3302890448
 Conc: 557.37 ng/ml



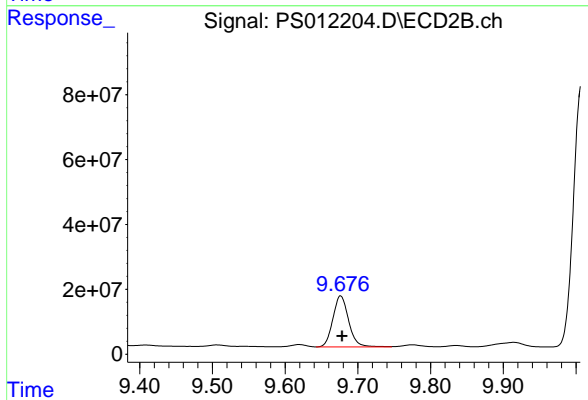
#12 2,4,5-T
 R.T.: 9.170 min
 Delta R.T.: -0.002 min
 Response: 1723267840
 Conc: 582.17 ng/ml



#13 2,4-DB

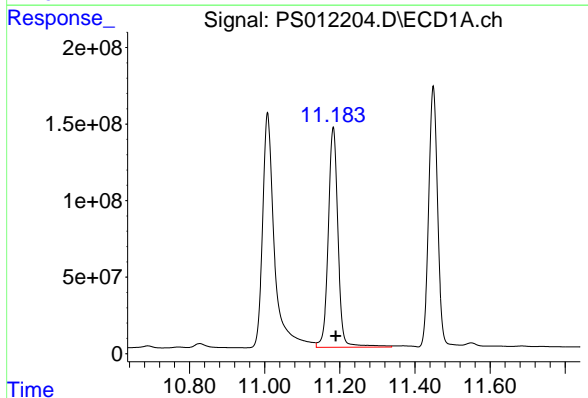
R.T.: 10.025 min
 Delta R.T.: -0.003 min
 Response: 369820902
 Conc: 465.43 ng/ml

Instrument :
 ECD_S
 ClientSampled :



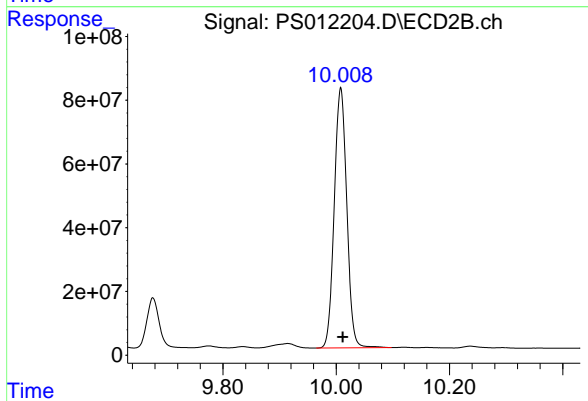
#13 2,4-DB

R.T.: 9.676 min
 Delta R.T.: -0.002 min
 Response: 236850706
 Conc: 566.33 ng/ml



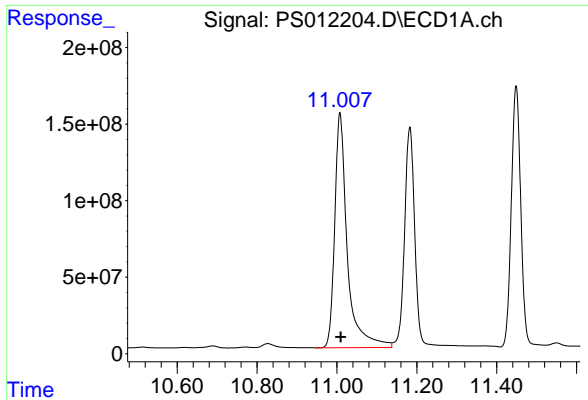
#14 DINOSEB

R.T.: 11.183 min
 Delta R.T.: -0.006 min
 Response: 2595996460
 Conc: 553.08 ng/ml



#14 DINOSEB

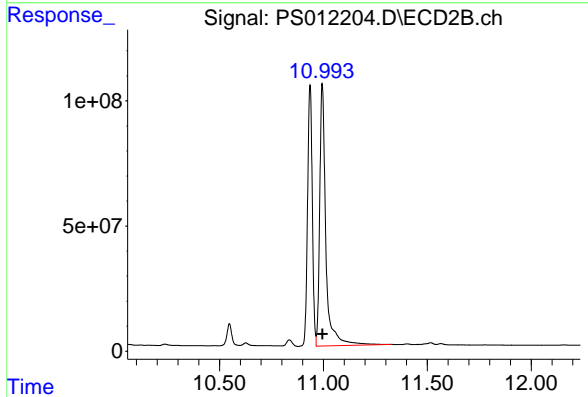
R.T.: 10.008 min
 Delta R.T.: -0.004 min
 Response: 1251672738
 Conc: 588.77 ng/ml



#15 Picloram

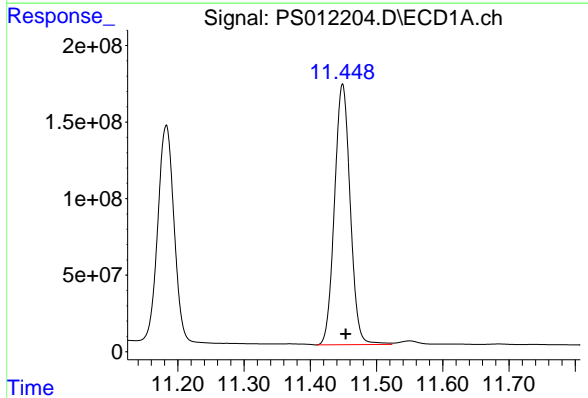
R.T.: 11.008 min
 Delta R.T.: -0.002 min
 Response: 3363965294
 Conc: 430.42 ng/ml

Instrument :
 ECD_S
 ClientSampled :



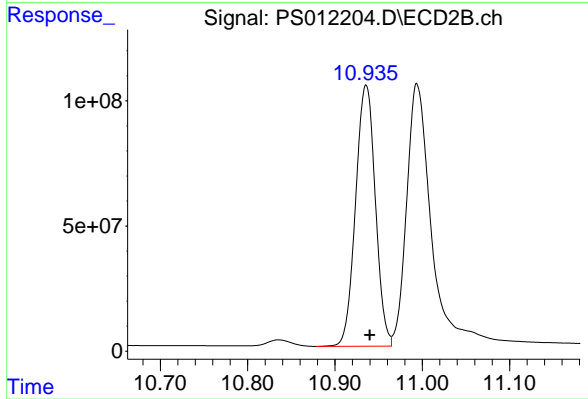
#15 Picloram

R.T.: 10.994 min
 Delta R.T.: -0.001 min
 Response: 2163017182
 Conc: 477.23 ng/ml



#16 DCPA

R.T.: 11.449 min
 Delta R.T.: -0.005 min
 Response: 2803134122
 Conc: 368.67 ng/ml



#16 DCPA

R.T.: 10.936 min
 Delta R.T.: -0.004 min
 Response: 1640556872
 Conc: 446.18 ng/ml