

Data Path : Z:\pestpcbsrv\HPCHEM1\ECD_S\Data\PS091021\
 Data File : PS016779.D
 Signal(s) : Signal #1: ECD1A.ch Signal #2: ECD2B.ch
 Acq On : 10 Sep 2021 09:48
 Operator : DD\AJ
 Sample : HEXANE
 Misc :
 ALS Vial : 1 Sample Multiplier: 1

Instrument :
 ECD_S
 ClientSampleId :

Integration File signal 1: autoint1.e
 Integration File signal 2: autoint2.e
 Quant Time: Sep 11 00:34:40 2021
 Quant Method : Z:\pestpcbsrv\HPCHEM1\ECD_S\Method\PS083121.M
 Quant Title : 8080.M
 QLast Update : Wed Sep 01 10:13:14 2021
 Response via : Initial Calibration
 Integrator: ChemStation

Volume Inj. : 2 µl
 Signal #1 Phase : Rtx-CLPesticides Signal #2 Phase: Rtx-CLPesticides2
 Signal #1 Info : 30M x 0.32mm x0.5 Signal #2 Info : 30M x 0.32mm x 0.25µm

Compound	RT#1	RT#2	Resp#1	Resp#2	ng/ml	ng/ml
----------	------	------	--------	--------	-------	-------

System Monitoring Compounds

Target Compounds

9) T	2,4-D	8.361f	0.000	78823985	0	52.037	N.D.	#
------	-------	--------	-------	----------	---	--------	------	---

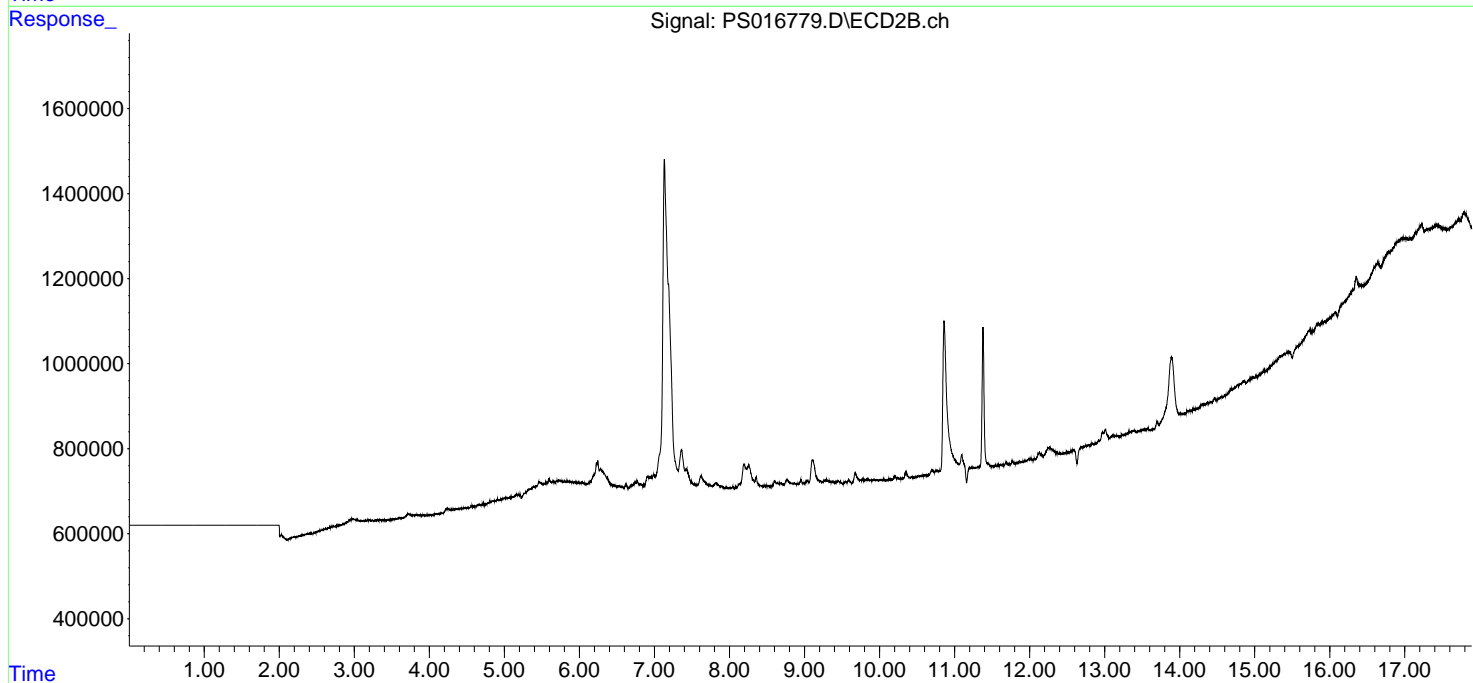
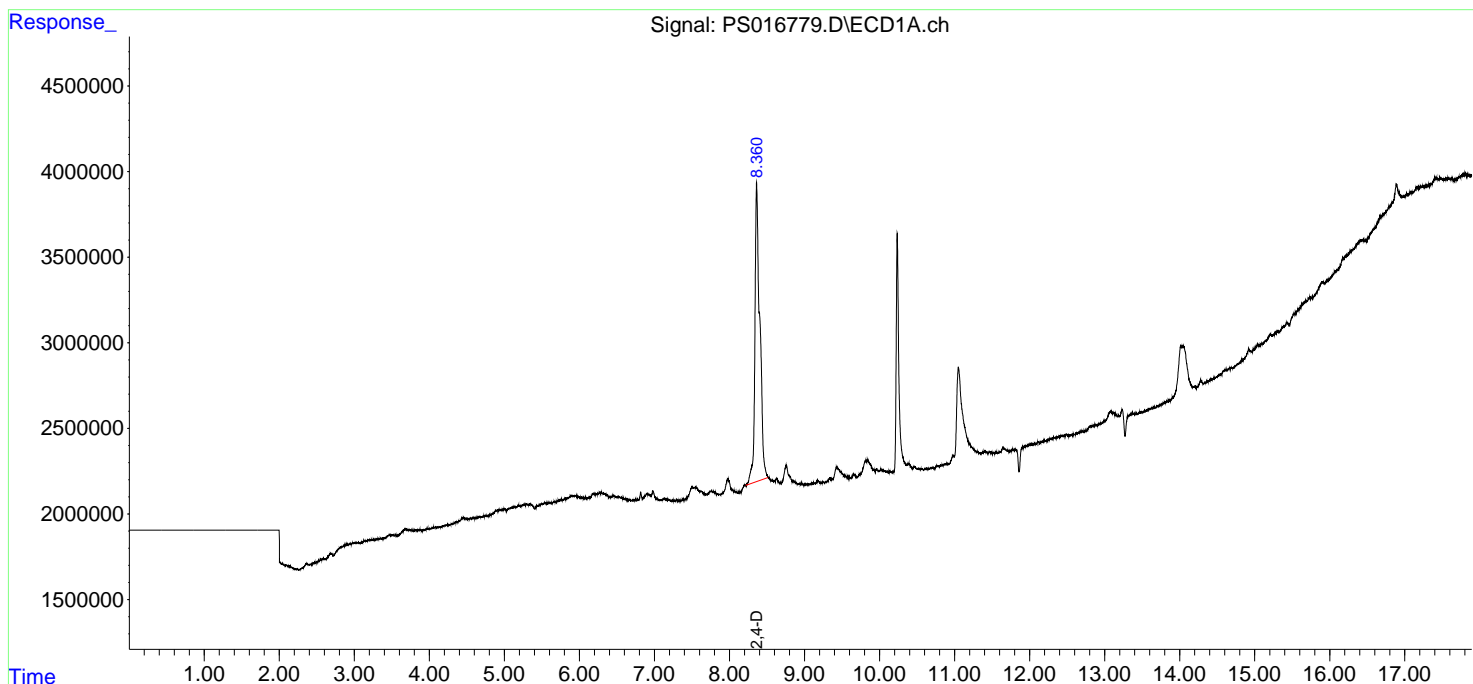
(f)=RT Delta > 1/2 Window (#)=Amounts differ by > 25% (m)=manual int.

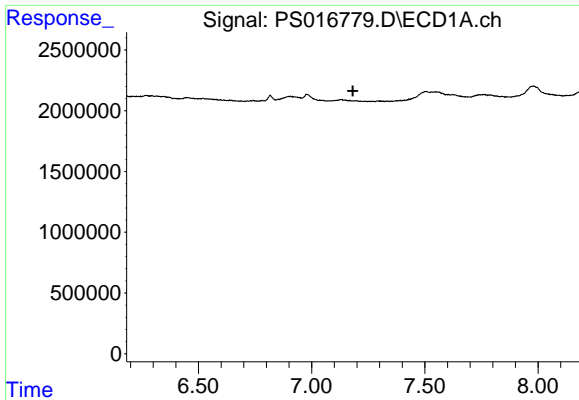
Data Path : Z:\pestpcbsrv\HPCHEM1\ECD_S\Data\PS091021\
 Data File : PS016779.D
 Signal(s) : Signal #1: ECD1A.ch Signal #2: ECD2B.ch
 Acq On : 10 Sep 2021 09:48
 Operator : DD\AJ
 Sample : HEXANE
 Misc :
 ALS Vial : 1 Sample Multiplier: 1

Instrument :
 ECD_S
 ClientSampleId :

Integration File signal 1: autoint1.e
 Integration File signal 2: autoint2.e
 Quant Time: Sep 11 00:34:40 2021
 Quant Method : Z:\pestpcbsrv\HPCHEM1\ECD_S\Method\PS083121.M
 Quant Title : 8080.M
 QLast Update : Wed Sep 01 10:13:14 2021
 Response via : Initial Calibration
 Integrator: ChemStation

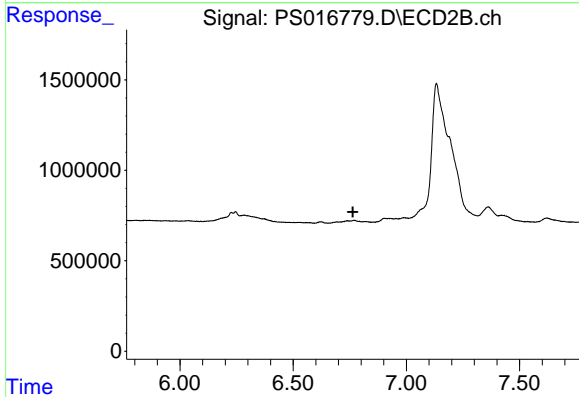
Volume Inj. : 2 µl
 Signal #1 Phase : Rtx-CLPesticides Signal #2 Phase: Rtx-CLPesticides2
 Signal #1 Info : 30M x 0.32mm x 0.5 Signal #2 Info : 30M x 0.32mm x 0.25µm



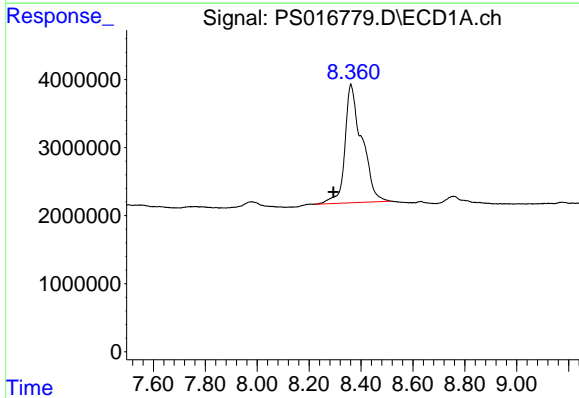


#4 2,4-DCAA
 R.T.: 0.000 min
 Exp R.T. : 7.182 min
 Response: 0
 Conc: N.D.

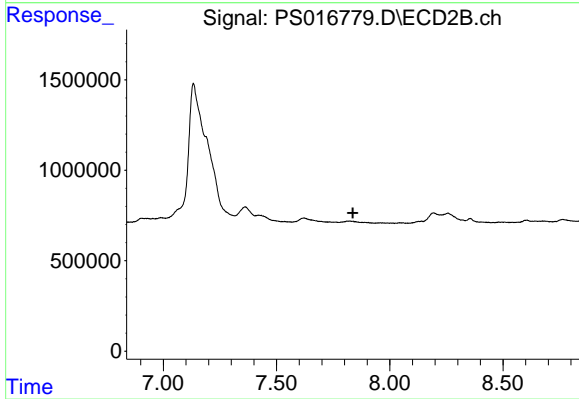
Instrument :
 ECD_S
 ClientSampleId :



#4 2,4-DCAA
 R.T.: 0.000 min
 Exp R.T. : 6.763 min
 Response: 0
 Conc: N.D.



#9 2,4-D
 R.T.: 8.361 min
 Delta R.T.: 0.066 min
 Response: 78823985
 Conc: 52.04 ng/ml



#9 2,4-D
 R.T.: 0.000 min
 Exp R.T. : 7.837 min
 Response: 0
 Conc: N.D.