

Data Path : Z:\pestpcbsrv\HPCHEM1\ECD_S\Data\PS091123\
 Data File : PS024285.D
 Signal(s) : Signal #1: ECD1A.ch Signal #2: ECD2B.ch
 Acq On : 11 Sep 2023 09:40
 Operator : AR\AJ
 Sample : HEXANE
 Misc :
 ALS Vial : 1 Sample Multiplier: 1

Instrument :
 ECD_S
 ClientSampleId :

Integration File signal 1: autoint1.e
 Integration File signal 2: autoint2.e
 Quant Time: Sep 11 13:10:12 2023
 Quant Method : Z:\pestpcbsrv\HPCHEM1\ECD_S\Method\PS082823.M
 Quant Title : 8080.M
 QLast Update : Mon Aug 28 16:48:10 2023
 Response via : Initial Calibration
 Integrator: ChemStation

Volume Inj. : 2 µl
 Signal #1 Phase : Rtx-CLPesticides Signal #2 Phase: Rtx-CLPesticides2
 Signal #1 Info : 30M x 0.32mm x0.5 Signal #2 Info : 30M x 0.32mm x 0.25µm

	Compound	RT#1	RT#2	Resp#1	Resp#2	ng/ml	ng/ml

System Monitoring Compounds							
4) S	2,4-DCAA	6.352	6.848f	3765239	599290	1.890	<MDL #
Target Compounds							
1) T	Dalapon	2.518	2.568	5903736	4375588	2.716	4.149 #
2) T	3,5-DICHL...	5.698	5.925f	3500524	594700	1.152	<MDL #
3) T	4-Nitroph...	6.201	6.336f	1945730	300670	1.566	<MDL #
7) T	MCPA	6.755	7.202f	633605	3316970	<MDL	1.135 #
8) T	DICHLORPROP	7.105	7.578	3699453	355823	1.627	<MDL #
9) T	2,4-D	7.279	7.790f	40357637	1394930	15.173	1.566 #
10) T	Pentachlo...	7.490	8.271	491080	348886	<MDL	<MDL #
11) T	2,4,5-TP ...	8.080	8.632	3838501	637352	<MDL	<MDL #
12) T	2,4,5-T	8.292	9.043	305043	1586112	<MDL	<MDL #
13) T	2,4-DB	8.815	9.461f	485440	756028	<MDL	1.645 #
14) T	DINOSEB	9.876	9.861	3728093	521307	<MDL	<MDL #
15) T	Picloram	9.688	10.790	17321213	7647939	1.061	1.288
16) T	DCPA	0.000	10.790	0	7647939	N.D.	1.491

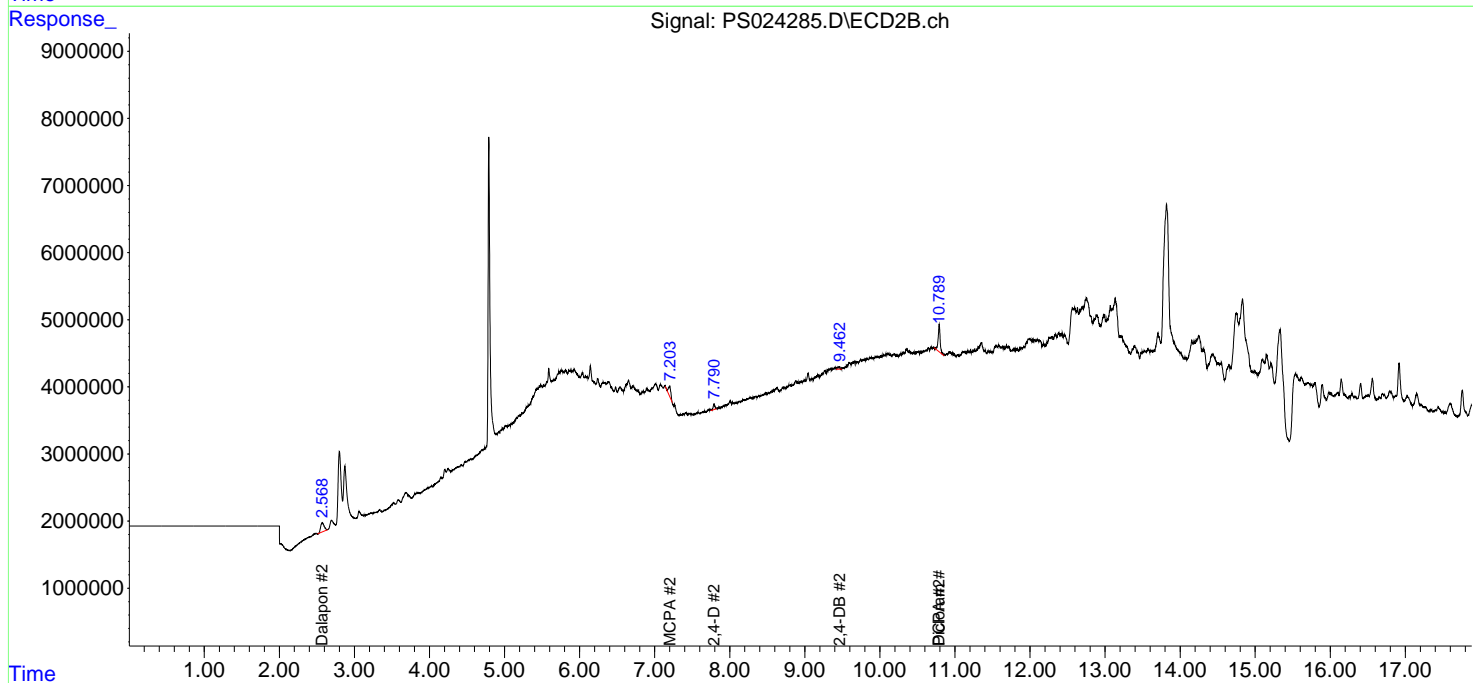
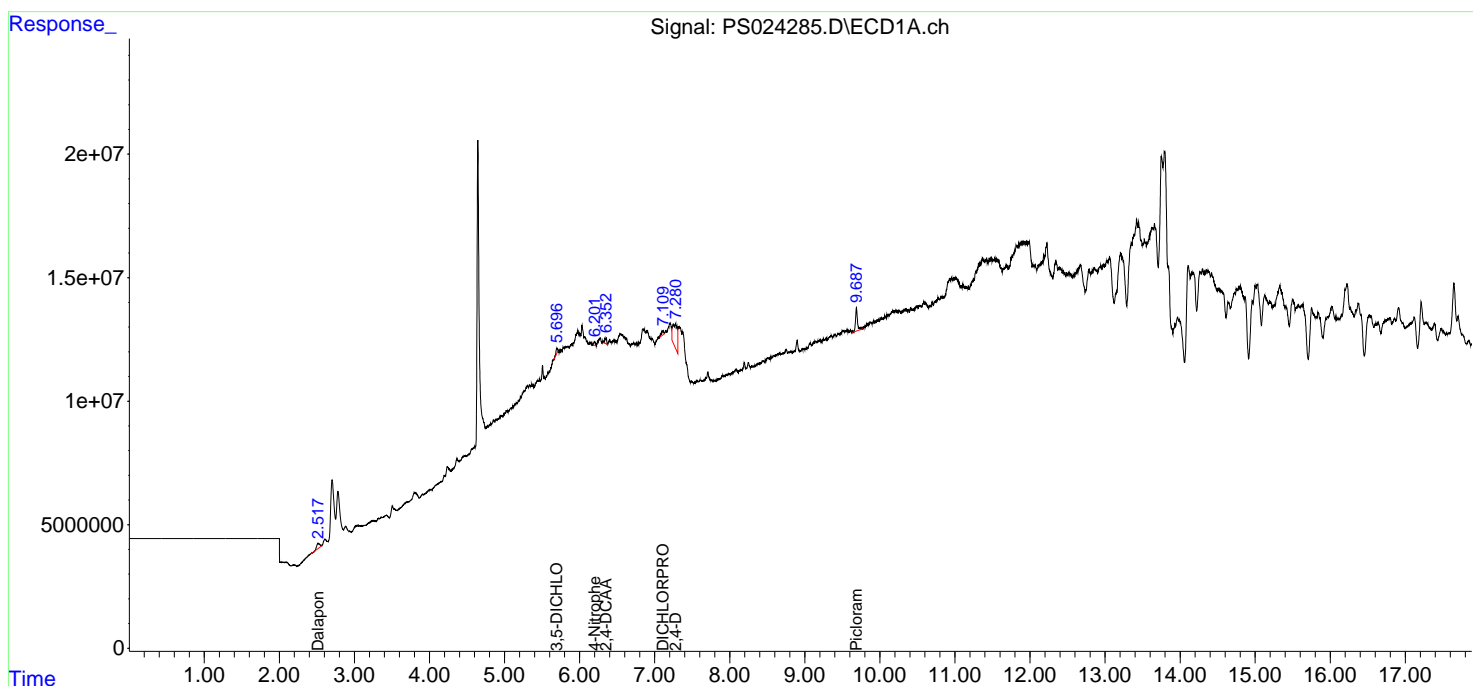
(f)=RT Delta > 1/2 Window (#)=Amounts differ by > 25% (m)=manual int.

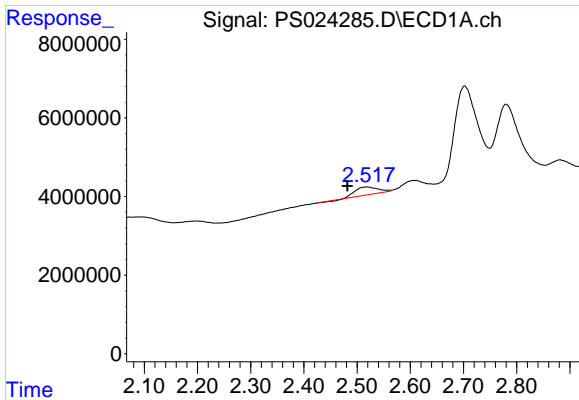
Data Path : Z:\pestpcbsrv\HPCHEM1\ECD_S\Data\PS091123\
Data File : PS024285.D
Signal(s) : Signal #1: ECD1A.ch Signal #2: ECD2B.ch
Acq On : 11 Sep 2023 09:40
Operator : AR\AJ
Sample : HEXANE
Misc :
ALS Vial : 1 Sample Multiplier: 1

Instrument :
ECD_S
ClientSampleId :

Integration File signal 1: autoint1.e
Integration File signal 2: autoint2.e
Quant Time: Sep 11 13:10:12 2023
Quant Method : Z:\pestpcbsrv\HPCHEM1\ECD_S\Method\PS082823.M
Quant Title : 8080.M
QLast Update : Mon Aug 28 16:48:10 2023
Response via : Initial Calibration
Integrator: ChemStation

Volume Inj. : 2 µl
Signal #1 Phase : Rtx-CLPesticides Signal #2 Phase: Rtx-CLPesticides2
Signal #1 Info : 30M x 0.32mm x0.5 Signal #2 Info : 30M x 0.32mm x 0.25µm

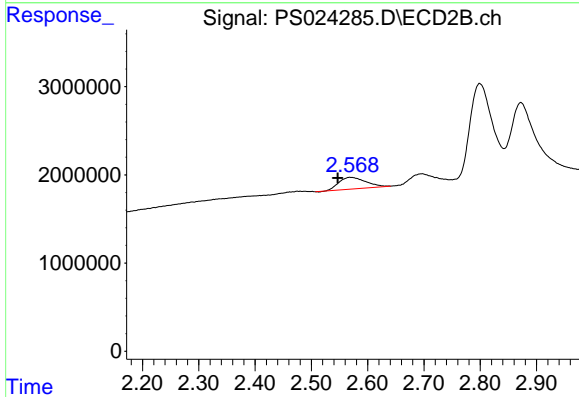




#1 Dalapon

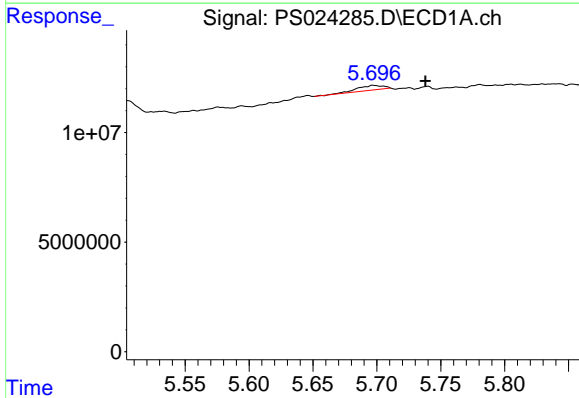
R.T.: 2.518 min
 Delta R.T.: 0.036 min
 Response: 5903736
 Conc: 2.72 ng/ml

Instrument :
 ECD_S
 ClientSampleId :



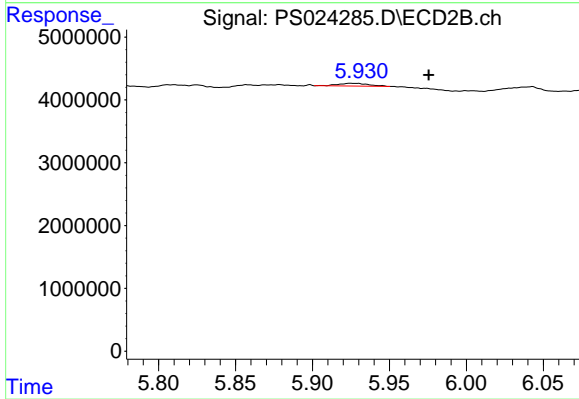
#1 Dalapon

R.T.: 2.568 min
 Delta R.T.: 0.021 min
 Response: 4375588
 Conc: 4.15 ng/ml



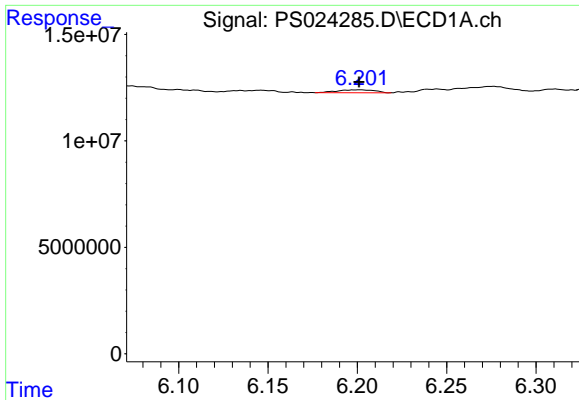
#2 3,5-DICHLOROBENZOIC ACID

R.T.: 5.698 min
 Delta R.T.: -0.040 min
 Response: 3500524
 Conc: 1.15 ng/ml



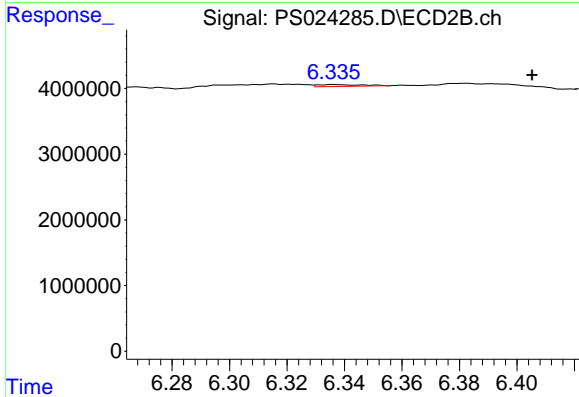
#2 3,5-DICHLOROBENZOIC ACID

R.T.: 5.925 min
 Delta R.T.: -0.050 min
 Response: 594700
 Conc: N.D.

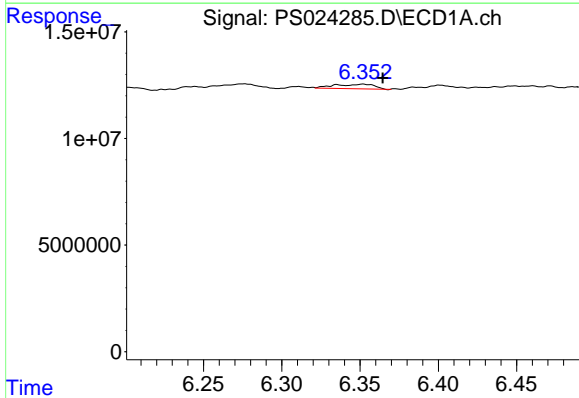


#3 4-Nitrophenol
 R.T.: 6.201 min
 Delta R.T.: 0.000 min
 Response: 1945730
 Conc: 1.57 ng/ml

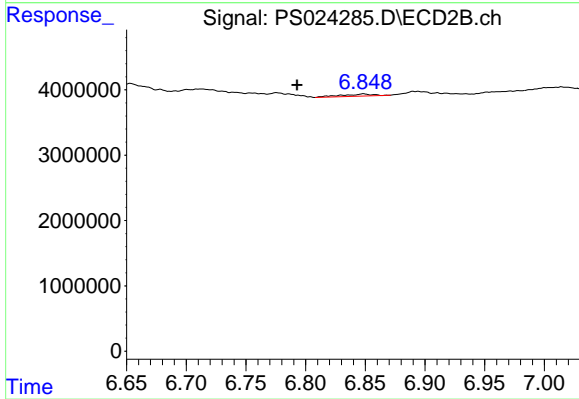
Instrument :
 ECD_S
 ClientSampleId :



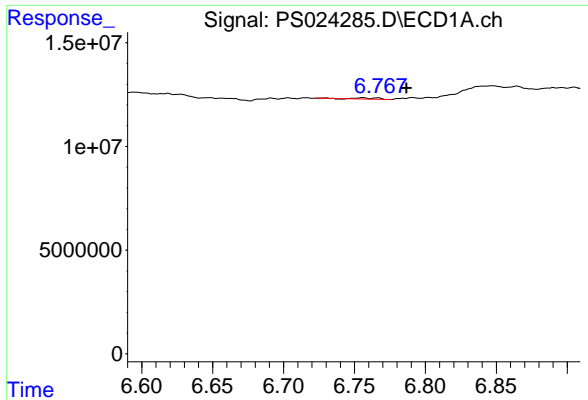
#3 4-Nitrophenol
 R.T.: 6.336 min
 Delta R.T.: -0.069 min
 Response: 300670
 Conc: N.D.



#4 2,4-DCAA
 R.T.: 6.352 min
 Delta R.T.: -0.012 min
 Response: 3765239
 Conc: 1.89 ng/ml



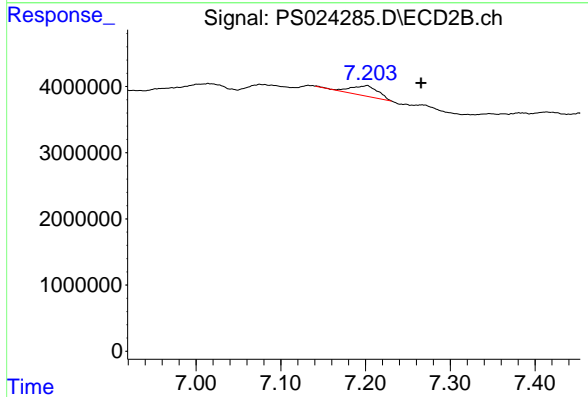
#4 2,4-DCAA
 R.T.: 6.848 min
 Delta R.T.: 0.056 min
 Response: 599290
 Conc: N.D.



#7 MCPA

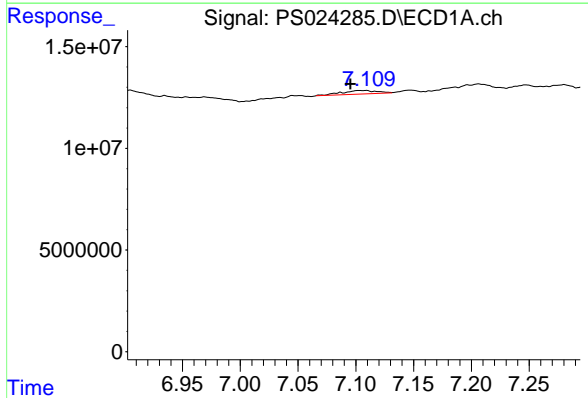
R.T.: 6.755 min
 Delta R.T.: -0.031 min
 Response: 633605
 Conc: N.D.

Instrument :
 ECD_S
 ClientSampleId :



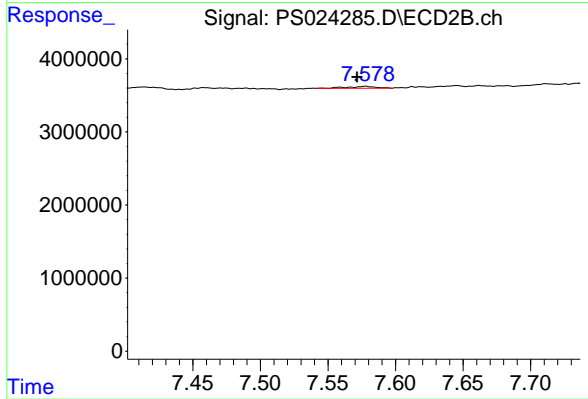
#7 MCPA

R.T.: 7.202 min
 Delta R.T.: -0.064 min
 Response: 3316970
 Conc: 1.13 ug/ml



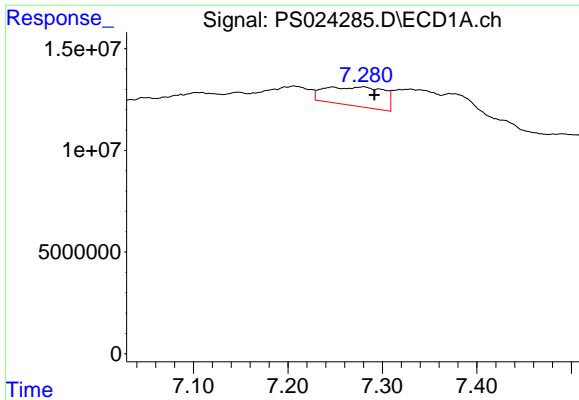
#8 DICHLORPROP

R.T.: 7.105 min
 Delta R.T.: 0.010 min
 Response: 3699453
 Conc: 1.63 ng/ml



#8 DICHLORPROP

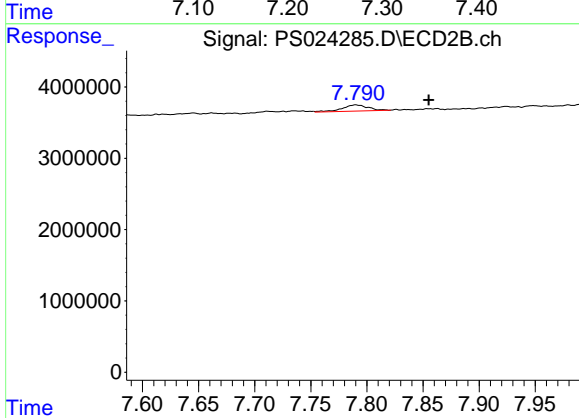
R.T.: 7.578 min
 Delta R.T.: 0.006 min
 Response: 355823
 Conc: N.D.



#9 2,4-D

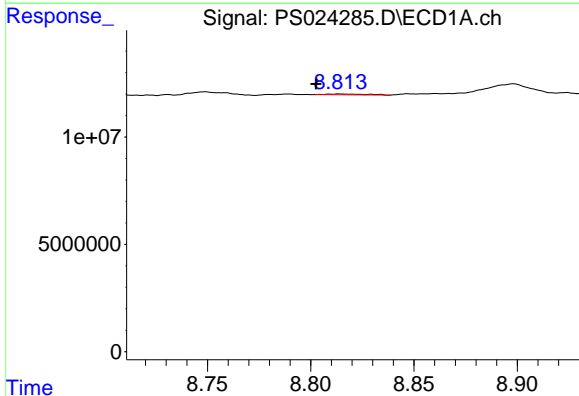
R.T.: 7.279 min
 Delta R.T.: -0.012 min
 Response: 40357637
 Conc: 15.17 ng/ml

Instrument :
 ECD_S
 ClientSampleId :



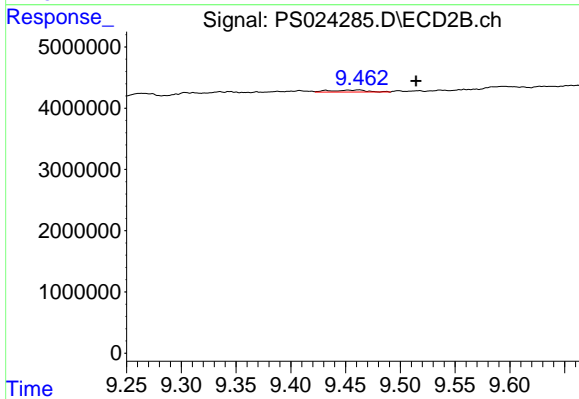
#9 2,4-D

R.T.: 7.790 min
 Delta R.T.: -0.065 min
 Response: 1394930
 Conc: 1.57 ng/ml



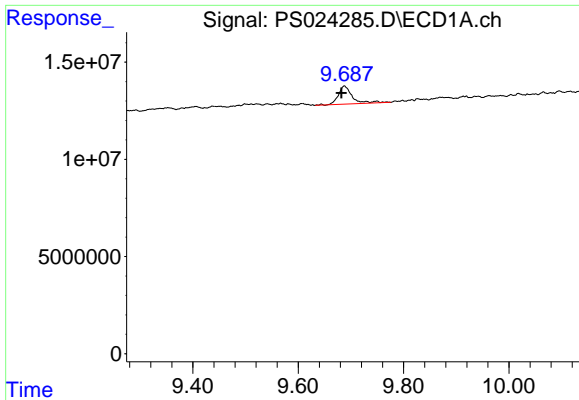
#13 2,4-DB

R.T.: 8.815 min
 Delta R.T.: 0.012 min
 Response: 485440
 Conc: N.D.



#13 2,4-DB

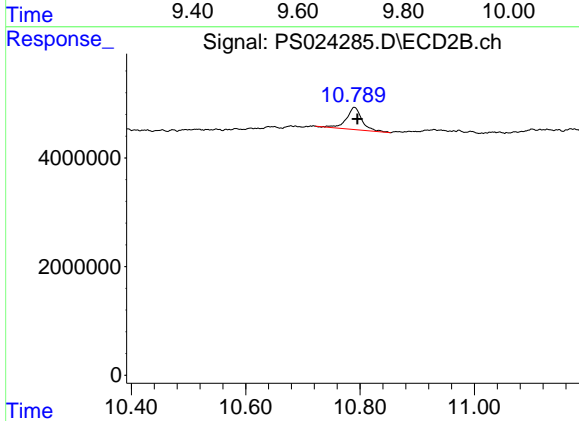
R.T.: 9.461 min
 Delta R.T.: -0.053 min
 Response: 756028
 Conc: 1.64 ng/ml



#15 Picloram

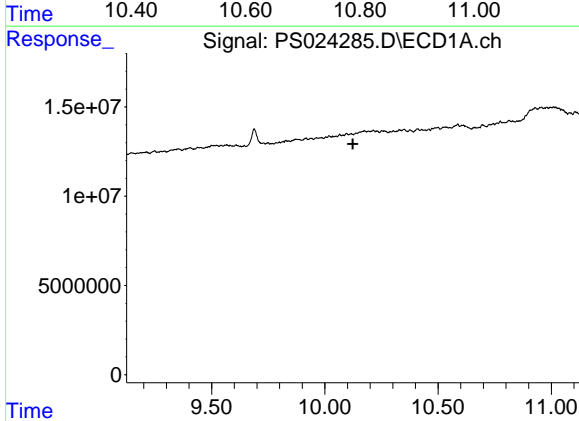
R.T.: 9.688 min
 Delta R.T.: 0.007 min
 Response: 17321213
 Conc: 1.06 ng/ml

Instrument :
 ECD_S
 ClientSampleId :



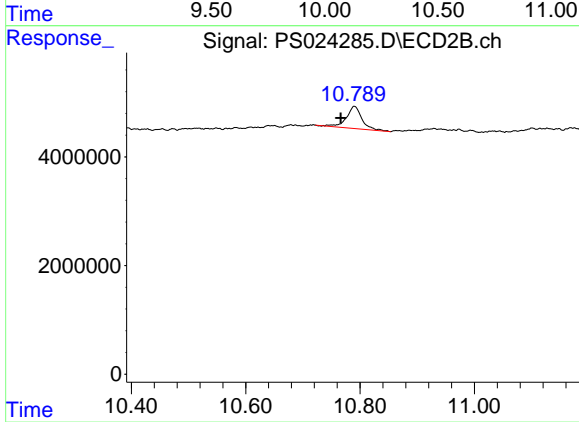
#15 Picloram

R.T.: 10.790 min
 Delta R.T.: -0.005 min
 Response: 7647939
 Conc: 1.29 ng/ml



#16 DCPA

R.T.: 0.000 min
 Exp R.T. : 10.124 min
 Response: 0
 Conc: N.D.



#16 DCPA

R.T.: 10.790 min
 Delta R.T.: 0.024 min
 Response: 7647939
 Conc: 1.49 ng/ml