

Data Path : Z:\pestpcbsrv\HPCHEM1\ECD\_S\Data\PS091219\  
 Data File : PS006679.D  
 Signal(s) : Signal #1: ECD1A.ch Signal #2: ECD2B.ch  
 Acq On : 12 Sep 2019 19:20  
 Operator : SM\AJ  
 Sample : PB123030BS  
 Misc :  
 ALS Vial : 5 Sample Multiplier: 1

Instrument :  
 ECD\_S  
 ClientSampleId :  
 PB123030BS

Integration File signal 1: autoint1.e  
 Integration File signal 2: autoint2.e  
 Quant Time: Sep 13 04:51:25 2019  
 Quant Method : Z:\pestpcbsrv\HPCHEM1\ECD\_S\Method\PS090919.M  
 Quant Title : 8080.M  
 QLast Update : Tue Sep 10 06:14:42 2019  
 Response via : Initial Calibration  
 Integrator: ChemStation

Volume Inj. : 2 µl  
 Signal #1 Phase : Rtx-CLPesticides Signal #2 Phase: Rtx-CLPesticides2  
 Signal #1 Info : 30M x 0.32mm x0.5 Signal #2 Info : 30M x 0.32mm x 0.25µm

	Compound	RT#1	RT#2	Resp#1	Resp#2	ng/ml	ng/ml
-----							
System Monitoring Compounds							
4) S	2,4-DCAA	5.479	5.209	589.5E6	319.4E6	758.753	748.081
Target Compounds							
1) T	Dalapon	2.045	1.754	734.4E6	385.8E6	751.342	754.963
2) T	3,5-DICHL...	4.846	4.512	620.7E6	426.8E6	626.998	788.552 #
3) T	4-Nitroph...	5.339	4.898	114.0E6	68930359	321.354	311.409
5) T	DICAMBA	5.632	5.337	2103.5E6	1158.1E6	729.643	722.339
6) T	MCP P	5.822	5.421	6192834	85370344	3.255	80.667 #
7) T	MCPA	5.917	5.598	192.7E6	149.9E6	68.188	85.483 #
8) T	DICHLORPROP	6.259	5.875	555.3E6	301.7E6	780.893	775.271
9) T	2,4-D	6.473	6.145	694.3E6	427.2E6	898.690	895.690
10) T	Pentachlo...	6.736	6.513	8747.1E6	4725.8E6	785.207	784.361
11) T	2,4,5-TP ...	7.270	6.875	3396.2E6	1743.1E6	789.261	765.707
12) T	2,4,5-T	7.542	7.270	3405.7E6	1681.5E6	730.884	779.878
13) T	2,4-DB	8.072	7.721	486.2E6	226.1E6	799.024	822.194
14) T	DINOSEB	9.163	8.032	2445.4E6	1254.2E6	702.543	748.620
15) T	Picloram	8.994	8.969	4359.7E6	2231.8E6	646.288	603.096
16) T	DCPA	9.435	8.969	2960.5E6	2231.8E6	524.056	708.465 #
-----							

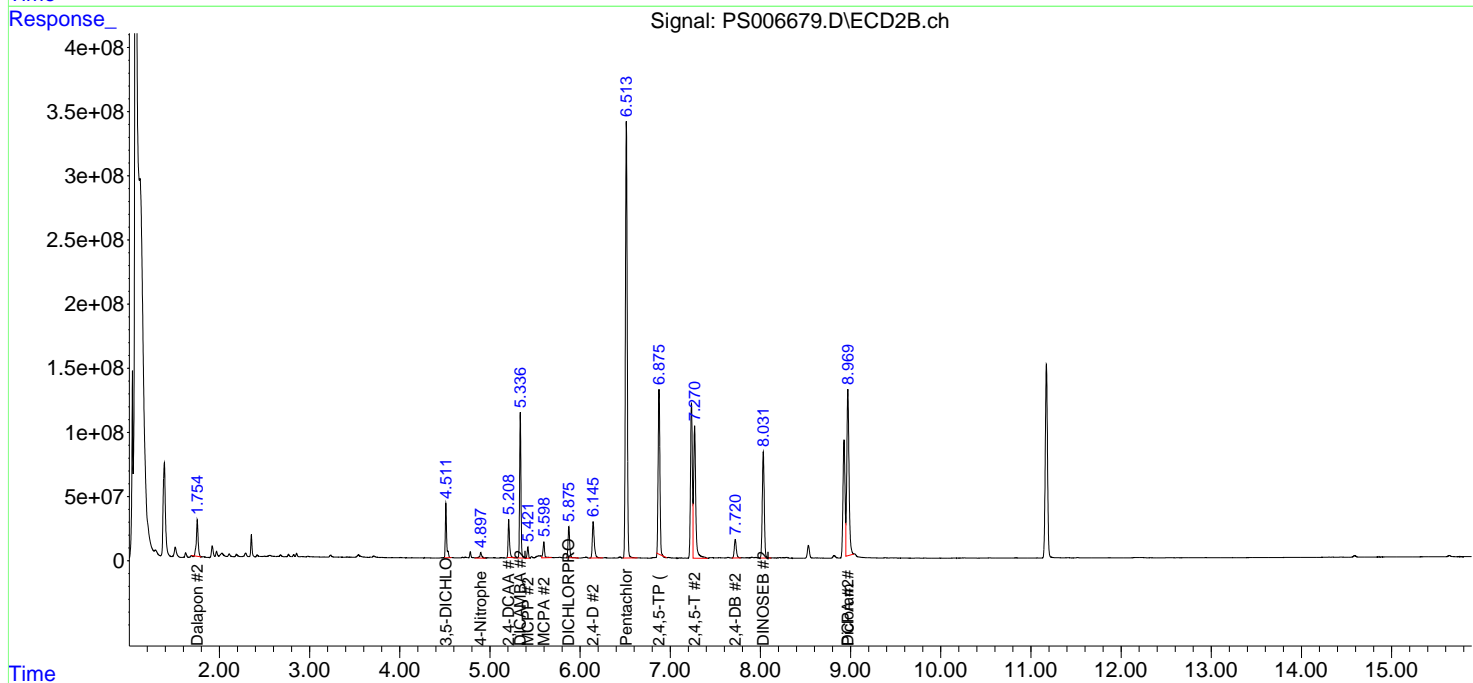
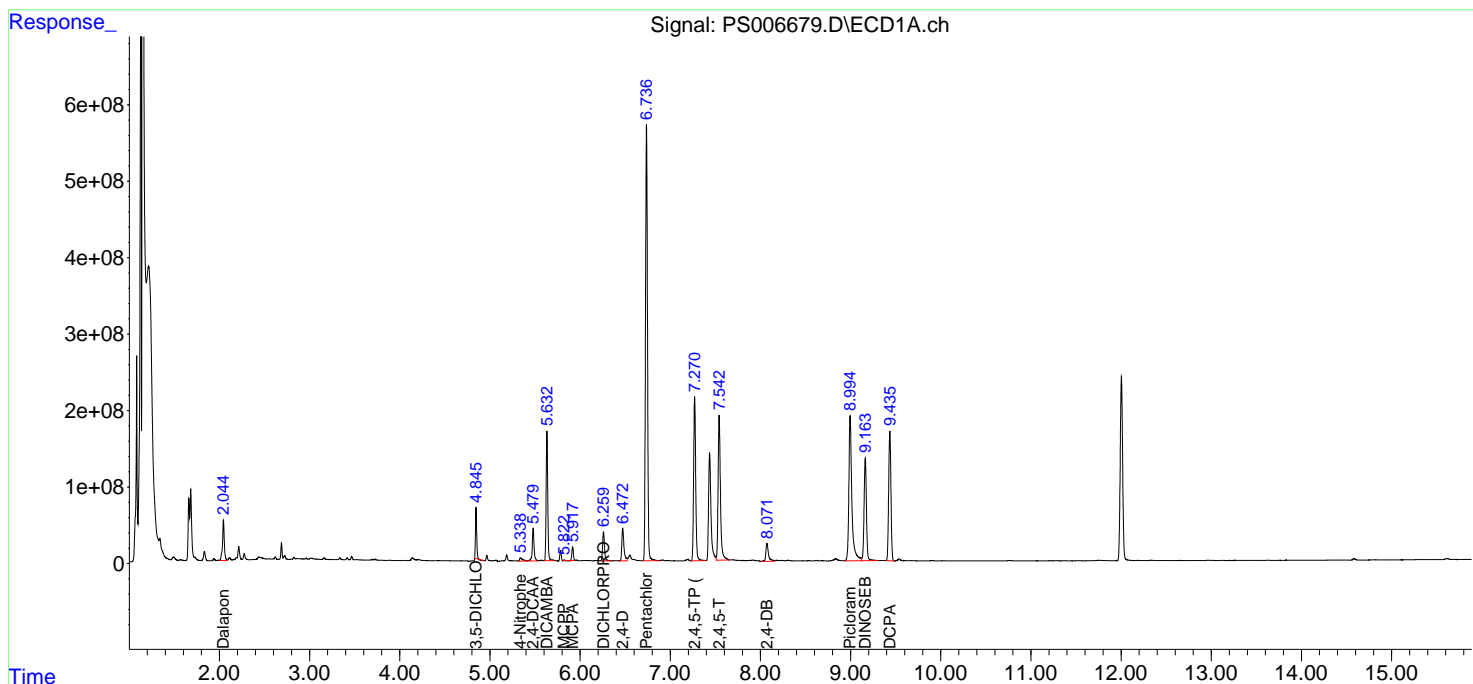
(f)=RT Delta > 1/2 Window (#)=Amounts differ by > 25% (m)=manual int.

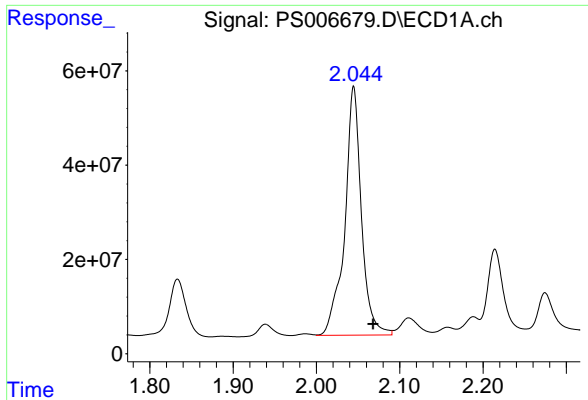
Data Path : Z:\pestpcbsrv\HPCHEM1\ECD\_S\Data\PS091219\  
 Data File : PS006679.D  
 Signal(s) : Signal #1: ECD1A.ch Signal #2: ECD2B.ch  
 Acq On : 12 Sep 2019 19:20  
 Operator : SM\AJ  
 Sample : PB123030BS  
 Misc :  
 ALS Vial : 5 Sample Multiplier: 1

Instrument :  
 ECD\_S  
 ClientSampled :  
 PB123030BS

Integration File signal 1: autoint1.e  
 Integration File signal 2: autoint2.e  
 Quant Time: Sep 13 04:51:25 2019  
 Quant Method : Z:\pestpcbsrv\HPCHEM1\ECD\_S\Method\PS090919.M  
 Quant Title : 8080.M  
 QLast Update : Tue Sep 10 06:14:42 2019  
 Response via : Initial Calibration  
 Integrator: ChemStation

Volume Inj. : 2 µl  
 Signal #1 Phase : Rtx-CLPesticides Signal #2 Phase: Rtx-CLPesticides2  
 Signal #1 Info : 30M x 0.32mm x 0.5 Signal #2 Info : 30M x 0.32mm x 0.25µm

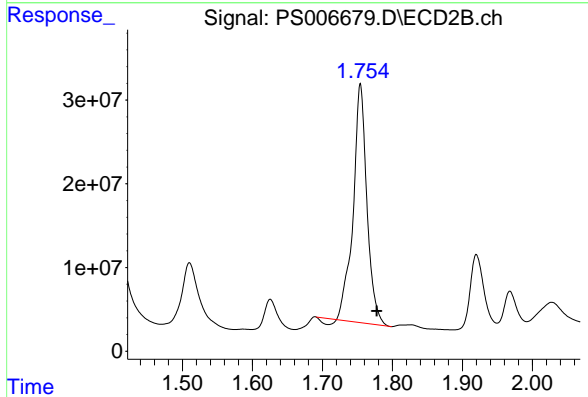




#1 Dalapon

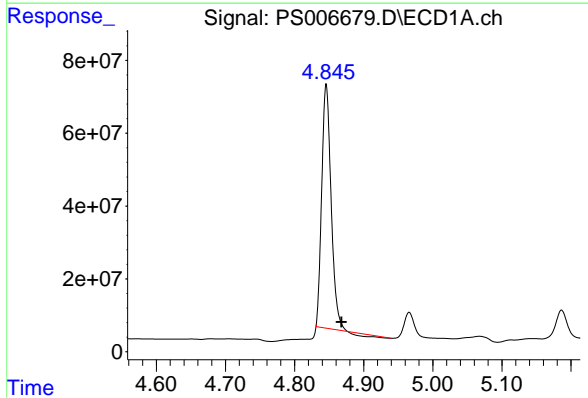
R.T.: 2.045 min  
 Delta R.T.: -0.023 min  
 Response: 734361995  
 Conc: 751.34 ng/ml

Instrument :  
 ECD\_S  
 ClientSampleId :  
 PB123030BS



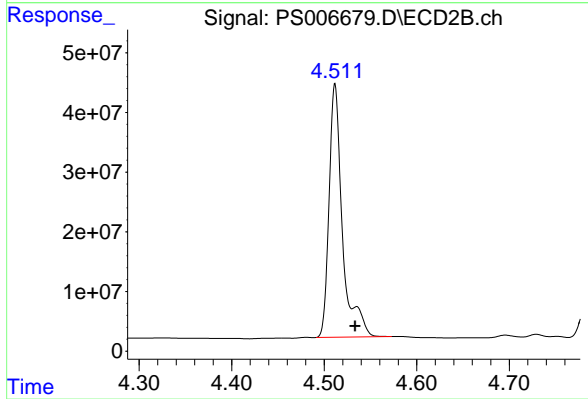
#1 Dalapon

R.T.: 1.754 min  
 Delta R.T.: -0.023 min  
 Response: 385822759  
 Conc: 754.96 ng/ml



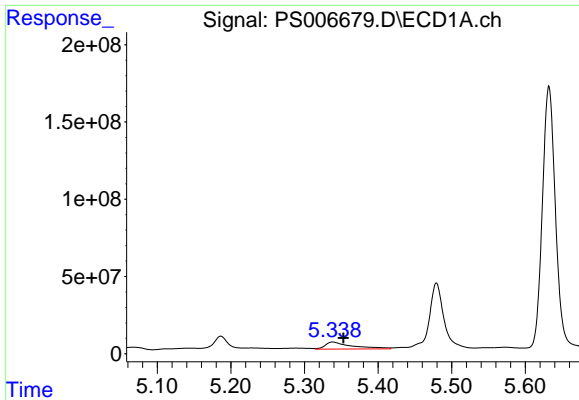
#2 3,5-DICHLOROBENZOIC ACID

R.T.: 4.846 min  
 Delta R.T.: -0.022 min  
 Response: 620715499  
 Conc: 627.00 ng/ml



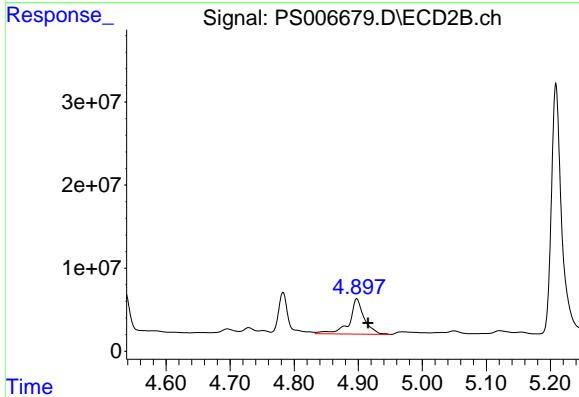
#2 3,5-DICHLOROBENZOIC ACID

R.T.: 4.512 min  
 Delta R.T.: -0.022 min  
 Response: 426805160  
 Conc: 788.55 ng/ml

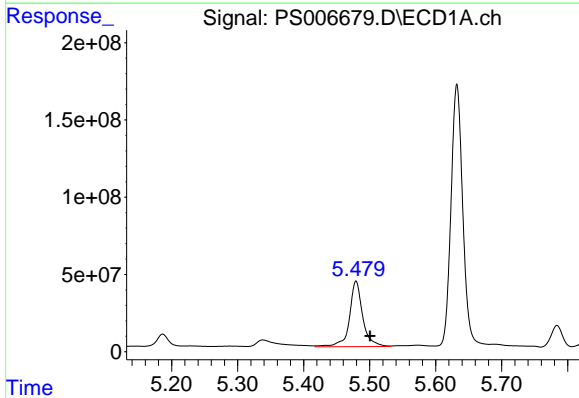


#3 4-Nitrophenol  
 R.T.: 5.339 min  
 Delta R.T.: -0.014 min  
 Response: 114038798  
 Conc: 321.35 ng/ml

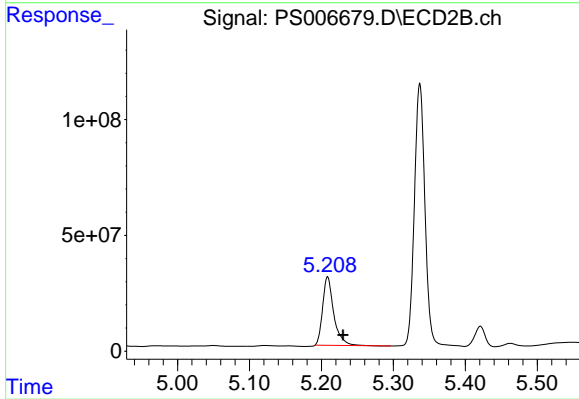
Instrument :  
 ECD\_S  
 ClientSampleId :  
 PB123030BS



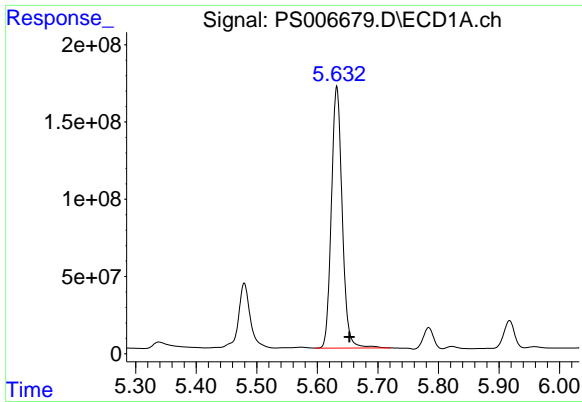
#3 4-Nitrophenol  
 R.T.: 4.898 min  
 Delta R.T.: -0.017 min  
 Response: 68930359  
 Conc: 311.41 ng/ml



#4 2,4-DCAA  
 R.T.: 5.479 min  
 Delta R.T.: -0.021 min  
 Response: 589463866  
 Conc: 758.75 ng/ml



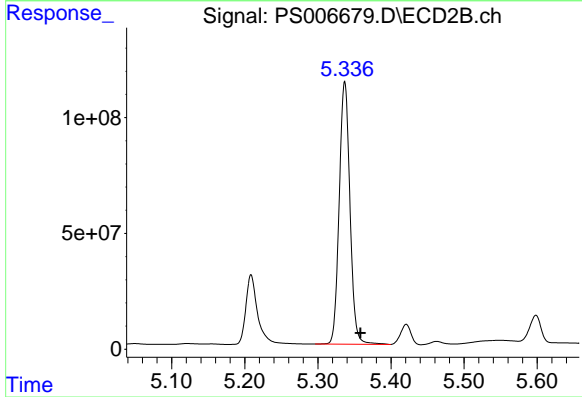
#4 2,4-DCAA  
 R.T.: 5.209 min  
 Delta R.T.: -0.021 min  
 Response: 319432637  
 Conc: 748.08 ng/ml



#5 DICAMBA

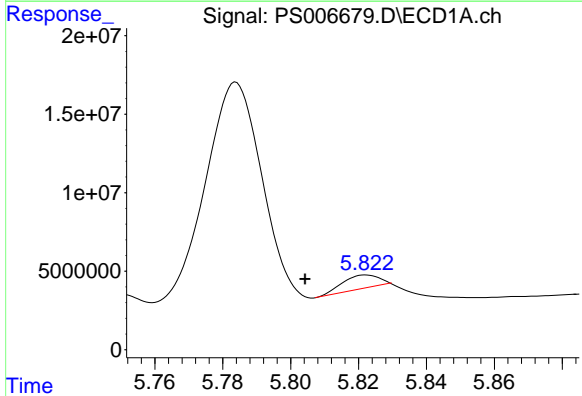
R.T.: 5.632 min  
 Delta R.T.: -0.021 min  
 Response: 2103502018  
 Conc: 729.64 ng/ml

Instrument :  
 ECD\_S  
 ClientSampleId :  
 PB123030BS



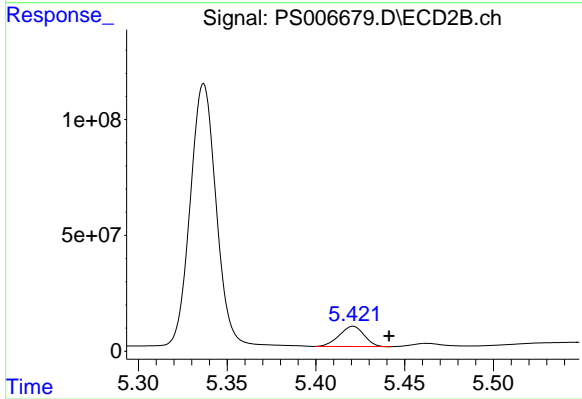
#5 DICAMBA

R.T.: 5.337 min  
 Delta R.T.: -0.021 min  
 Response: 1158067438  
 Conc: 722.34 ng/ml



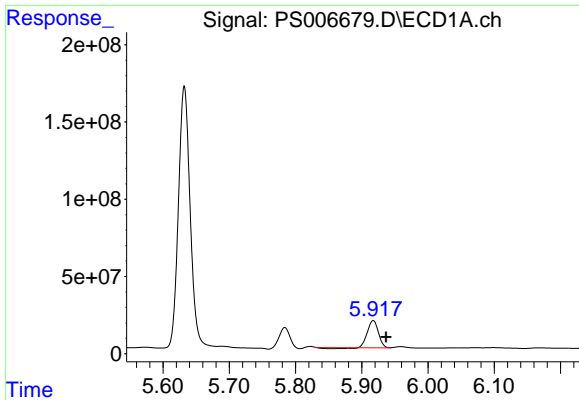
#6 MCPP

R.T.: 5.822 min  
 Delta R.T.: 0.018 min  
 Response: 6192834  
 Conc: 3.26 ug/ml



#6 MCPP

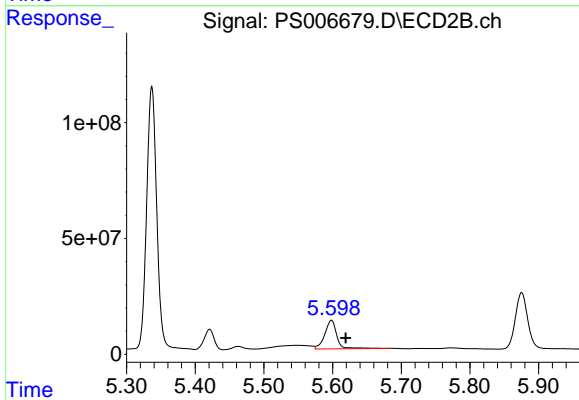
R.T.: 5.421 min  
 Delta R.T.: -0.020 min  
 Response: 85370344  
 Conc: 80.67 ug/ml



#7 MCPA

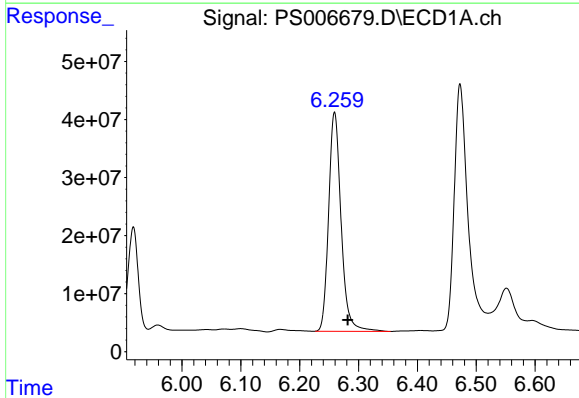
R.T.: 5.917 min  
 Delta R.T.: -0.020 min  
 Response: 192716823  
 Conc: 68.19 ug/ml

Instrument :  
 ECD\_S  
 ClientSampleId :  
 PB123030BS



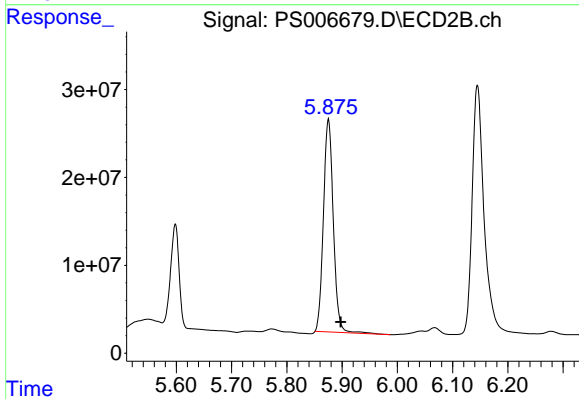
#7 MCPA

R.T.: 5.598 min  
 Delta R.T.: -0.021 min  
 Response: 149937940  
 Conc: 85.48 ug/ml



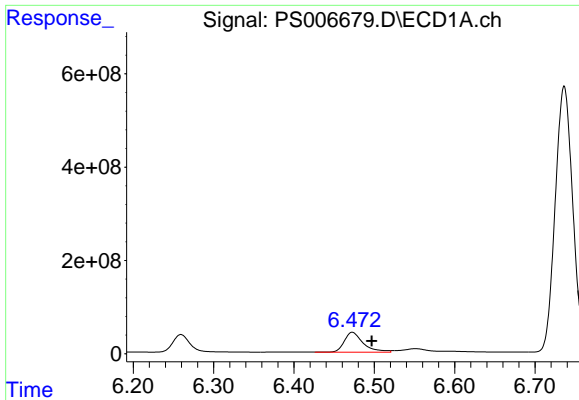
#8 DICHLORPROP

R.T.: 6.259 min  
 Delta R.T.: -0.022 min  
 Response: 555346477  
 Conc: 780.89 ng/ml



#8 DICHLORPROP

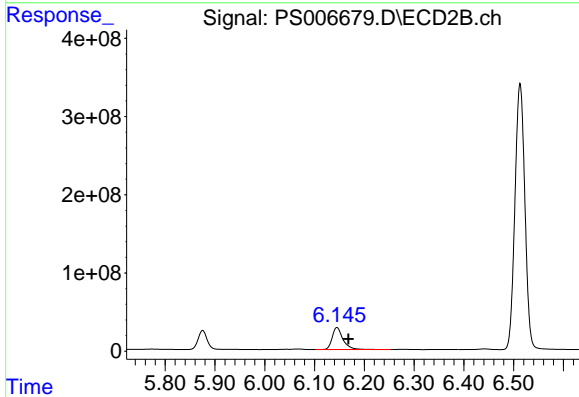
R.T.: 5.875 min  
 Delta R.T.: -0.022 min  
 Response: 301724332  
 Conc: 775.27 ng/ml



#9 2,4-D

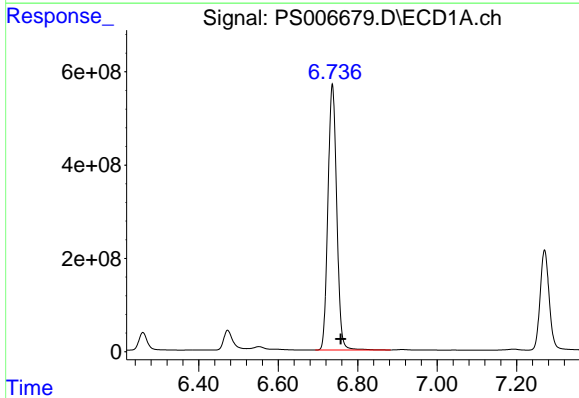
R.T.: 6.473 min  
 Delta R.T.: -0.024 min  
 Response: 694348914  
 Conc: 898.69 ng/ml

Instrument :  
 ECD\_S  
 ClientSampleId :  
 PB123030BS



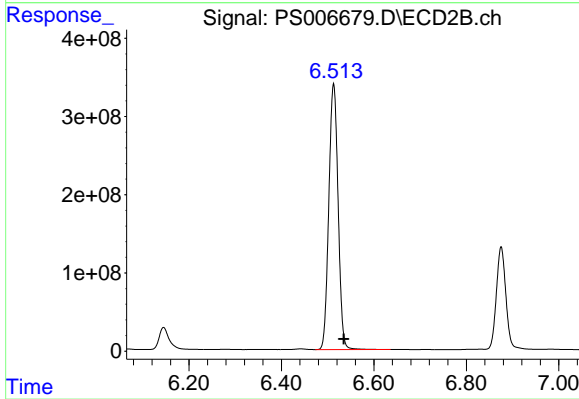
#9 2,4-D

R.T.: 6.145 min  
 Delta R.T.: -0.023 min  
 Response: 427233676  
 Conc: 895.69 ng/ml



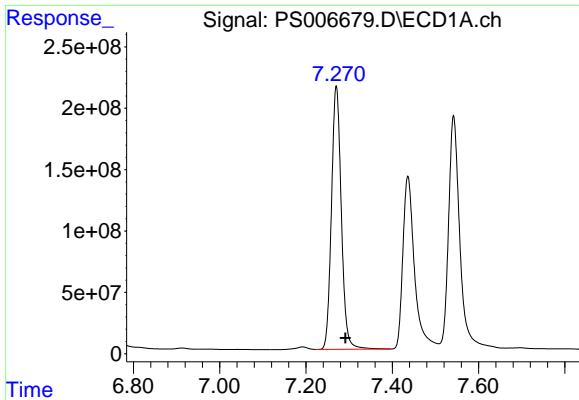
#10 Pentachlorophenol

R.T.: 6.736 min  
 Delta R.T.: -0.021 min  
 Response: 8747127212  
 Conc: 785.21 ng/ml



#10 Pentachlorophenol

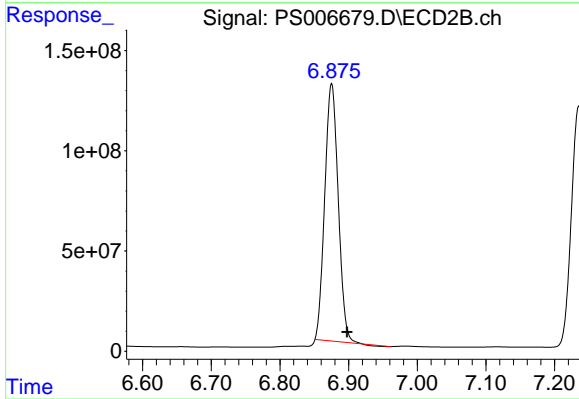
R.T.: 6.513 min  
 Delta R.T.: -0.022 min  
 Response: 4725766492  
 Conc: 784.36 ng/ml



#11 2,4,5-TP (SILVEX)

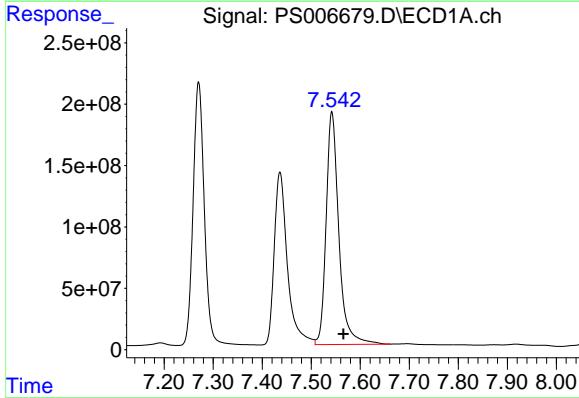
R.T.: 7.270 min  
 Delta R.T.: -0.021 min  
 Response: 3396198352  
 Conc: 789.26 ng/ml

Instrument :  
 ECD\_S  
 ClientSampleId :  
 PB123030BS



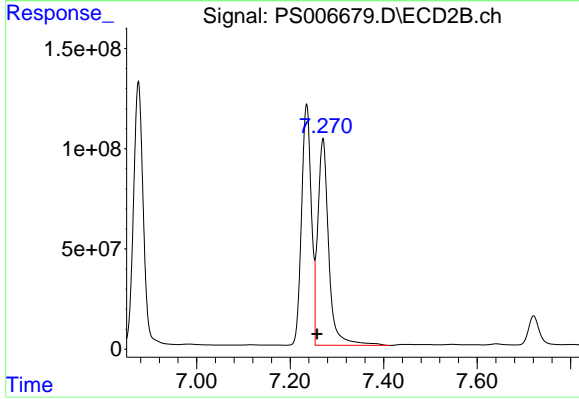
#11 2,4,5-TP (SILVEX)

R.T.: 6.875 min  
 Delta R.T.: -0.023 min  
 Response: 1743079110  
 Conc: 765.71 ng/ml



#12 2,4,5-T

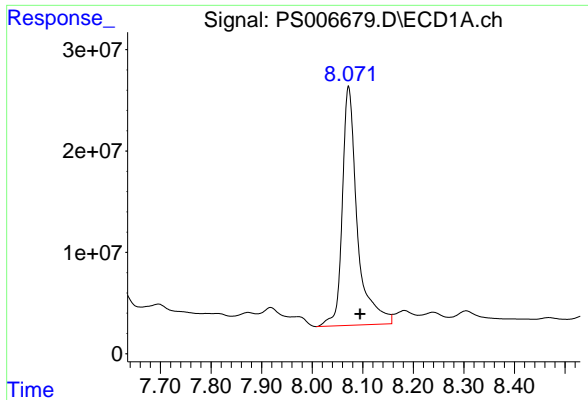
R.T.: 7.542 min  
 Delta R.T.: -0.023 min  
 Response: 3405654954  
 Conc: 730.88 ng/ml



#12 2,4,5-T

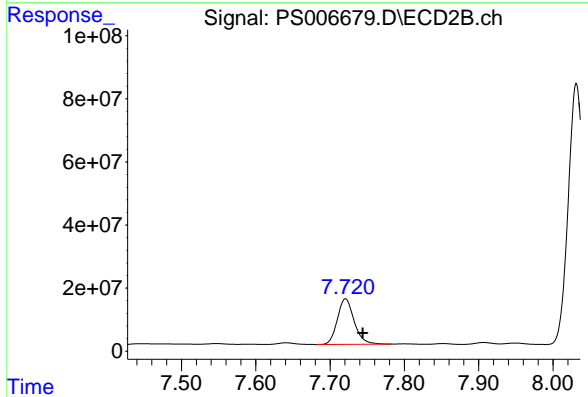
R.T.: 7.270 min  
 Delta R.T.: 0.012 min  
 Response: 1681542191  
 Conc: 779.88 ng/ml



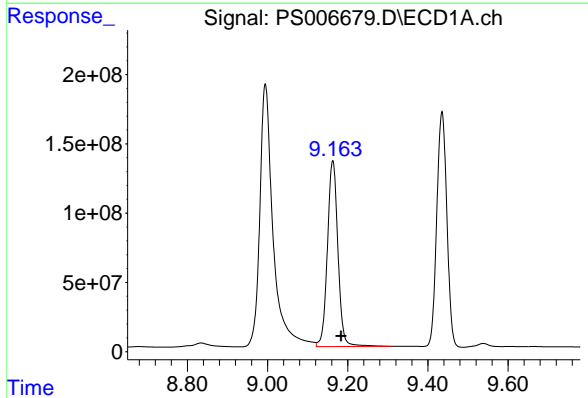


#13 2,4-DB  
 R.T.: 8.072 min  
 Delta R.T.: -0.023 min  
 Response: 486248912  
 Conc: 799.02 ng/ml

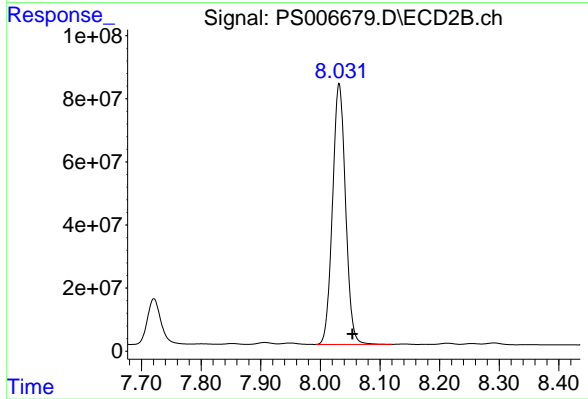
Instrument :  
 ECD\_S  
 ClientSampleId :  
 PB123030BS



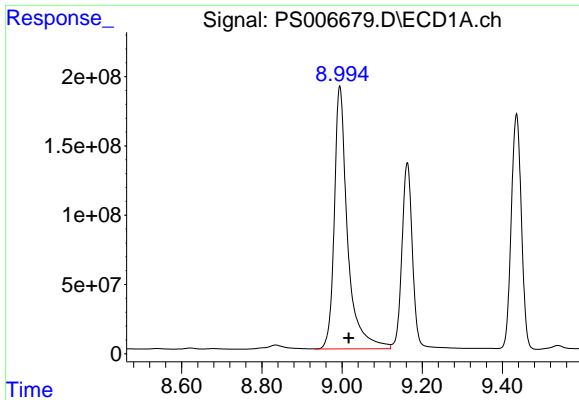
#13 2,4-DB  
 R.T.: 7.721 min  
 Delta R.T.: -0.023 min  
 Response: 226063649  
 Conc: 822.19 ng/ml



#14 DINOSEB  
 R.T.: 9.163 min  
 Delta R.T.: -0.021 min  
 Response: 2445425457  
 Conc: 702.54 ng/ml

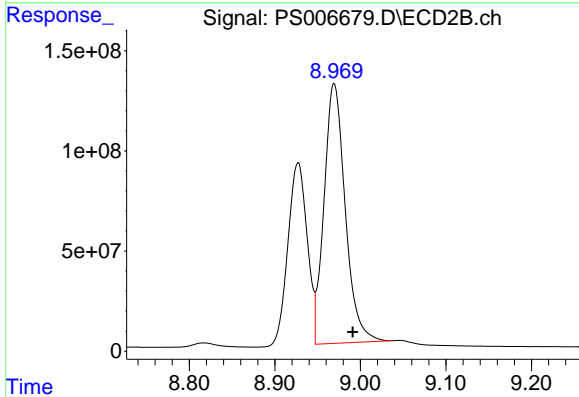


#14 DINOSEB  
 R.T.: 8.032 min  
 Delta R.T.: -0.022 min  
 Response: 1254199156  
 Conc: 748.62 ng/ml

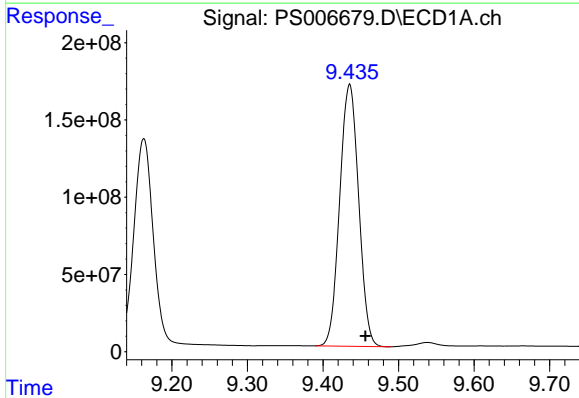


#15 Picloram  
 R.T.: 8.994 min  
 Delta R.T.: -0.023 min  
 Response: 4359660889  
 Conc: 646.29 ng/ml

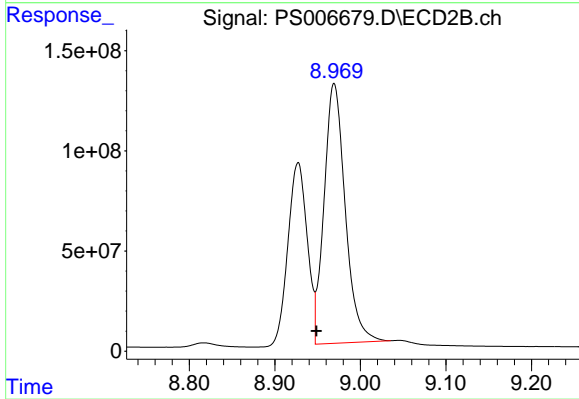
Instrument :  
 ECD\_S  
 ClientSampleId :  
 PB123030BS



#15 Picloram  
 R.T.: 8.969 min  
 Delta R.T.: -0.022 min  
 Response: 2231825211  
 Conc: 603.10 ng/ml



#16 DCPA  
 R.T.: 9.435 min  
 Delta R.T.: -0.021 min  
 Response: 2960478806  
 Conc: 524.06 ng/ml



#16 DCPA  
 R.T.: 8.969 min  
 Delta R.T.: 0.021 min  
 Response: 2231825211  
 Conc: 708.46 ng/ml