

Data Path : Z:\pestpcbsrv\HPCHEM1\ECD_S\Data\PS091219\
 Data File : PS006684.D
 Signal(s) : Signal #1: ECD1A.ch Signal #2: ECD2B.ch
 Acq On : 12 Sep 2019 21:11
 Operator : SM\AJ
 Sample : K4806-02
 Misc :
 ALS Vial : 10 Sample Multiplier: 1

Instrument :
 ECD_S
 ClientSampleId :
 DRUM-COMP

Integration File signal 1: autoint1.e
 Integration File signal 2: autoint2.e
 Quant Time: Sep 13 04:52:48 2019
 Quant Method : Z:\pestpcbsrv\HPCHEM1\ECD_S\Method\PS090919.M
 Quant Title : 8080.M
 QLast Update : Tue Sep 10 06:14:42 2019
 Response via : Initial Calibration
 Integrator: ChemStation

Volume Inj. : 2 µl
 Signal #1 Phase : Rtx-CLPesticides Signal #2 Phase: Rtx-CLPesticides2
 Signal #1 Info : 30M x 0.32mm x0.5 Signal #2 Info : 30M x 0.32mm x 0.25µm

Compound	RT#1	RT#2	Resp#1	Resp#2	ng/ml	ng/ml

System Monitoring Compounds						
4) S 2,4-DCAA	5.480	5.210	970.6E6	529.6E6	1249.286	1240.164
Target Compounds						
1) T Dalapon	2.027	1.740	88646399	91179618	90.696	178.417 #
2) T 3,5-DICHL...	0.000	4.540	0	24022877	N.D.	44.384
5) T DICAMBA	5.695	0.000	8700960	0	3.018	N.D. #
9) T 2,4-D	6.543	0.000	207.4E6	0	268.480	N.D. #
11) T 2,4,5-TP ...	7.273	0.000	6830425	0	1.587	N.D. #
12) T 2,4,5-T	7.553	0.000	24346353	0	5.225	N.D. #

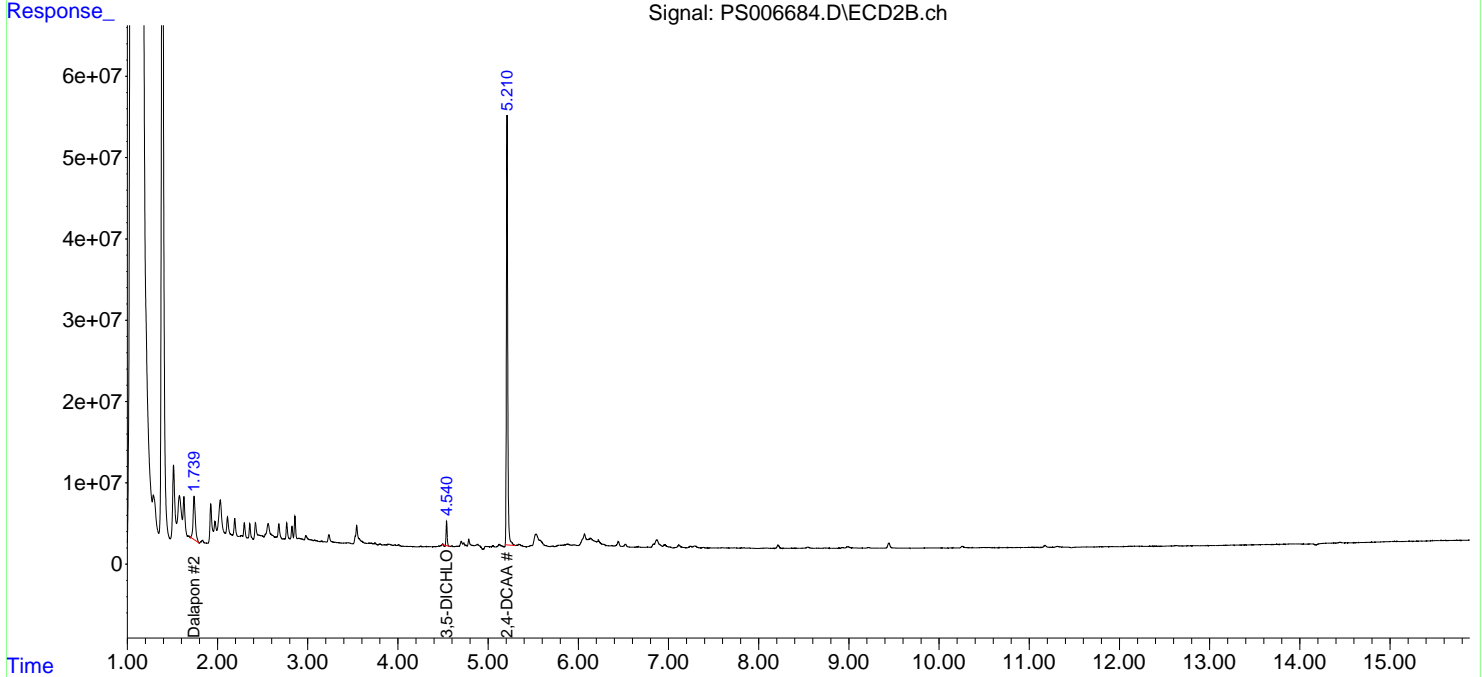
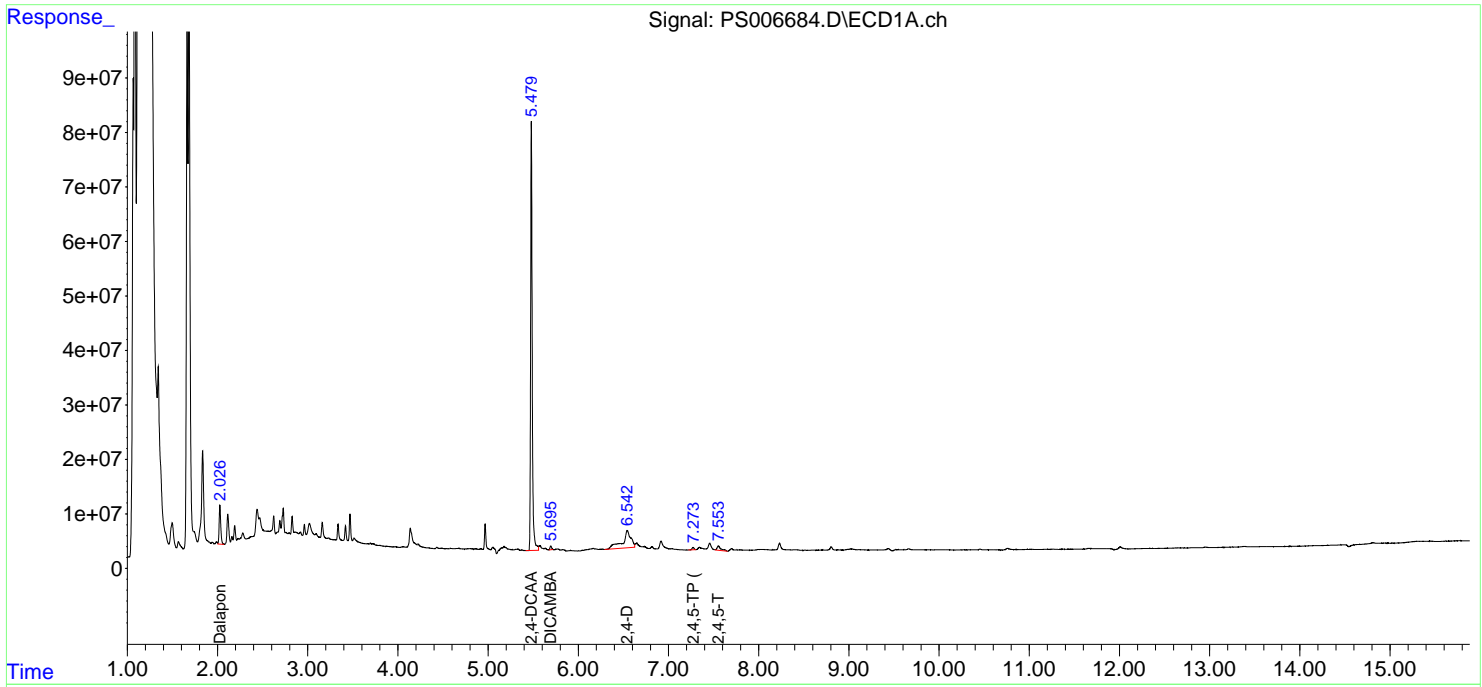
(f)=RT Delta > 1/2 Window (#)=Amounts differ by > 25% (m)=manual int.

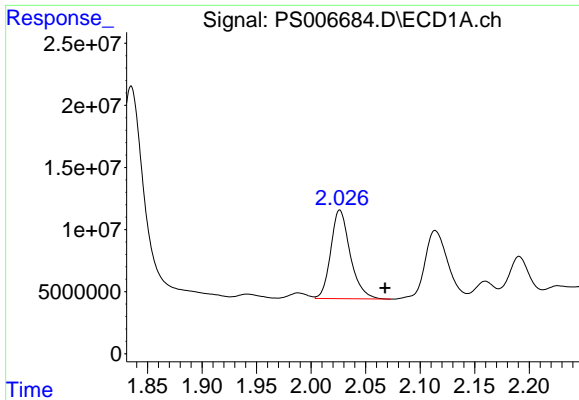
Data Path : Z:\pestpcbsrv\HPCHEM1\ECD_S\Data\PS091219\
 Data File : PS006684.D
 Signal(s) : Signal #1: ECD1A.ch Signal #2: ECD2B.ch
 Acq On : 12 Sep 2019 21:11
 Operator : SM\AJ
 Sample : K4806-02
 Misc :
 ALS Vial : 10 Sample Multiplier: 1

Instrument :
 ECD_S
ClientSampleId :
 DRUM-COMP

Integration File signal 1: autoint1.e
 Integration File signal 2: autoint2.e
 Quant Time: Sep 13 04:52:48 2019
 Quant Method : Z:\pestpcbsrv\HPCHEM1\ECD_S\Method\PS090919.M
 Quant Title : 8080.M
 QLast Update : Tue Sep 10 06:14:42 2019
 Response via : Initial Calibration
 Integrator: ChemStation

Volume Inj. : 2 µl
 Signal #1 Phase : Rtx-CLPesticides Signal #2 Phase: Rtx-CLPesticides2
 Signal #1 Info : 30M x 0.32mm x 0.5 Signal #2 Info : 30M x 0.32mm x 0.25µm

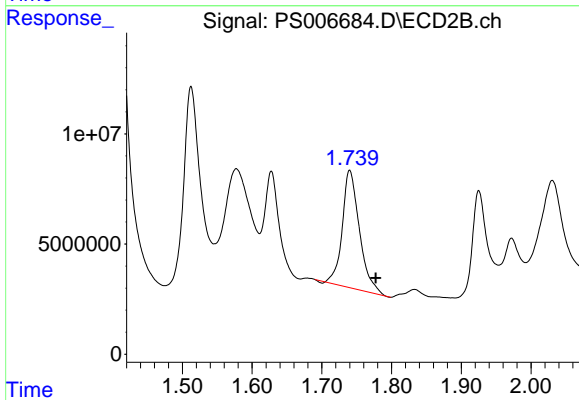




#1 Dalapon

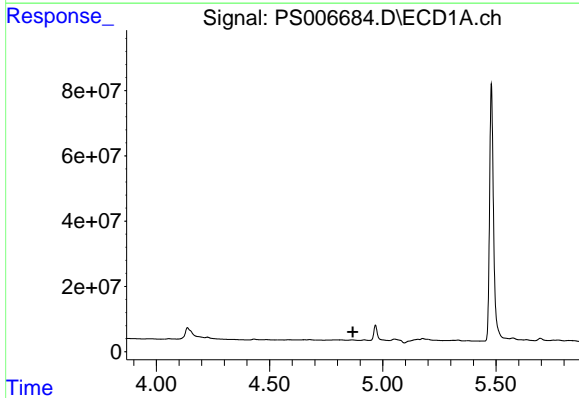
R.T.: 2.027 min
 Delta R.T.: -0.042 min
 Response: 88646399
 Conc: 90.70 ng/ml

Instrument :
 ECD_S
 ClientSampleId :
 DRUM-COMP



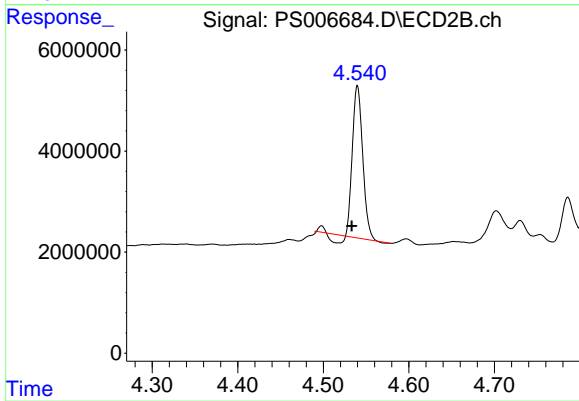
#1 Dalapon

R.T.: 1.740 min
 Delta R.T.: -0.037 min
 Response: 91179618
 Conc: 178.42 ng/ml



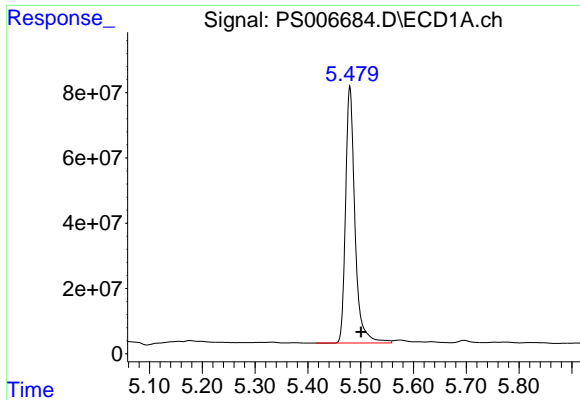
#2 3,5-DICHLOROBENZOIC ACID

R.T.: 0.000 min
 Exp R.T. : 4.868 min
 Response: 0
 Conc: N.D.



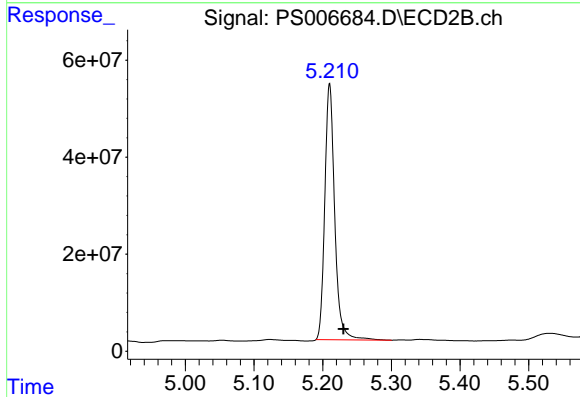
#2 3,5-DICHLOROBENZOIC ACID

R.T.: 4.540 min
 Delta R.T.: 0.007 min
 Response: 24022877
 Conc: 44.38 ng/ml

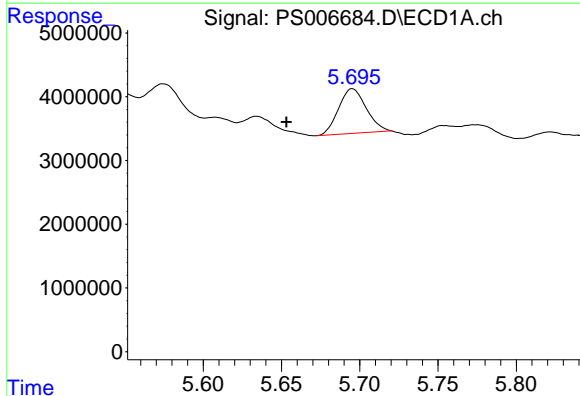


#4 2,4-DCAA
 R.T.: 5.480 min
 Delta R.T.: -0.021 min
 Response: 970551713
 Conc: 1249.29 ng/ml

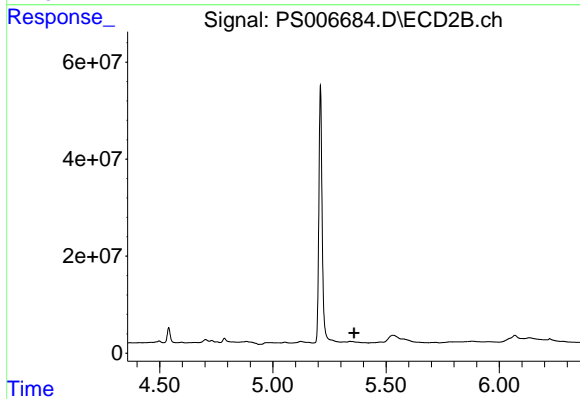
Instrument :
 ECD_S
 ClientSampleId :
 DRUM-COMP



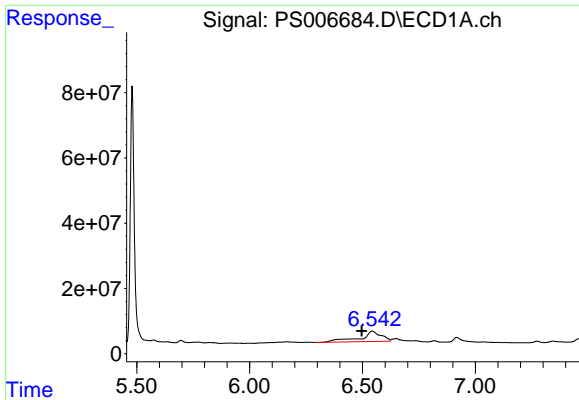
#4 2,4-DCAA
 R.T.: 5.210 min
 Delta R.T.: -0.020 min
 Response: 529552991
 Conc: 1240.16 ng/ml



#5 DICAMBA
 R.T.: 5.695 min
 Delta R.T.: 0.042 min
 Response: 8700960
 Conc: 3.02 ng/ml

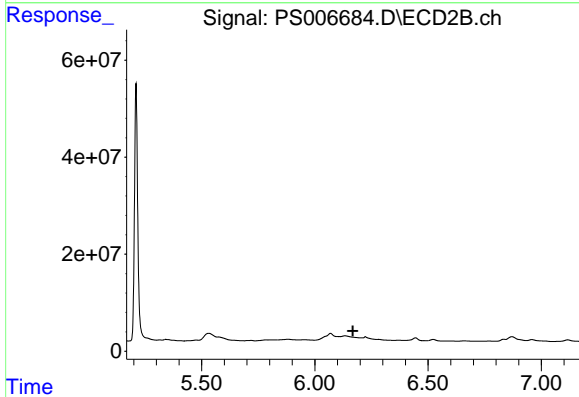


#5 DICAMBA
 R.T.: 0.000 min
 Exp R.T. : 5.358 min
 Response: 0
 Conc: N.D.

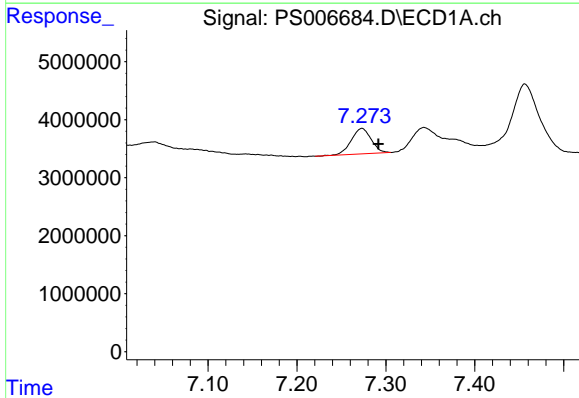


#9 2,4-D
 R.T.: 6.543 min
 Delta R.T.: 0.046 min
 Response: 207433592
 Conc: 268.48 ng/ml

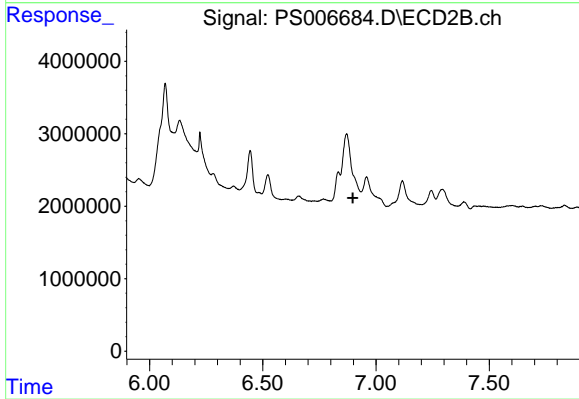
Instrument :
 ECD_S
ClientSampleId :
 DRUM-COMP



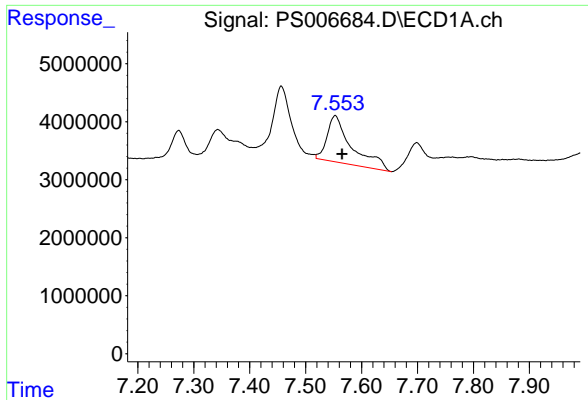
#9 2,4-D
 R.T.: 0.000 min
 Exp R.T. : 6.168 min
 Response: 0
 Conc: N.D.



#11 2,4,5-TP (SILVEX)
 R.T.: 7.273 min
 Delta R.T.: -0.019 min
 Response: 6830425
 Conc: 1.59 ng/ml



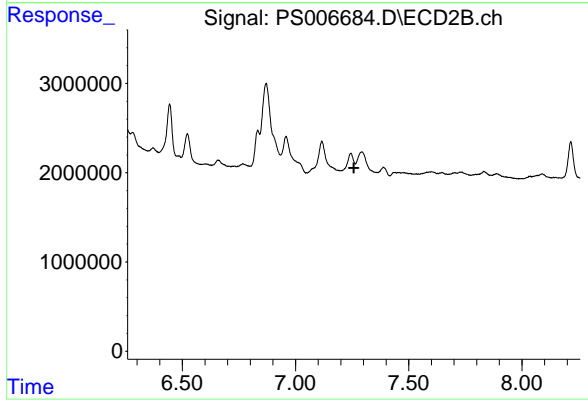
#11 2,4,5-TP (SILVEX)
 R.T.: 0.000 min
 Exp R.T. : 6.898 min
 Response: 0
 Conc: N.D.



#12 2,4,5-T

R.T.: 7.553 min
Delta R.T.: -0.013 min
Response: 24346353
Conc: 5.22 ng/ml

Instrument :
ECD_S
ClientSampleId :
DRUM-COMP



#12 2,4,5-T

R.T.: 0.000 min
Exp R.T. : 7.258 min
Response: 0
Conc: N.D.