

Data Path : Z:\pestpcbsrv\HPCHEM1\ECD_S\Data\PS091219\
 Data File : PS006685.D
 Signal(s) : Signal #1: ECD1A.ch Signal #2: ECD2B.ch
 Acq On : 12 Sep 2019 21:33
 Operator : SM\AJ
 Sample : K4825-15
 Misc :
 ALS Vial : 11 Sample Multiplier: 1

Instrument :
 ECD_S
 ClientSampleId :
 CSA-4-1

Integration File signal 1: autoint1.e
 Integration File signal 2: autoint2.e
 Quant Time: Sep 13 04:53:03 2019
 Quant Method : Z:\pestpcbsrv\HPCHEM1\ECD_S\Method\PS090919.M
 Quant Title : 8080.M
 QLast Update : Tue Sep 10 06:14:42 2019
 Response via : Initial Calibration
 Integrator: ChemStation

Volume Inj. : 2 µl
 Signal #1 Phase : Rtx-CLPesticides Signal #2 Phase: Rtx-CLPesticides2
 Signal #1 Info : 30M x 0.32mm x0.5 Signal #2 Info : 30M x 0.32mm x 0.25µm

Compound	RT#1	RT#2	Resp#1	Resp#2	ng/ml	ng/ml

System Monitoring Compounds						
4) S 2,4-DCAA	5.484	5.215	1106.4E6	609.5E6	1424.109	1427.468
Target Compounds						
1) T Dalapon	2.030	1.745	88575537	79531070	90.624	155.623 #
2) T 3,5-DICHL...	0.000	4.545	0	30962448	N.D.	57.205
3) T 4-Nitroph...	5.338	0.000	4772507	0	13.449	N.D. #
5) T DICAMBA	5.699	0.000	5632150	0	1.954	N.D. #
7) T MCPA	5.899	0.000	5339174	0	1.889	N.D. #
9) T 2,4-D	6.549	0.000	125.5E6	0	162.436	N.D. #

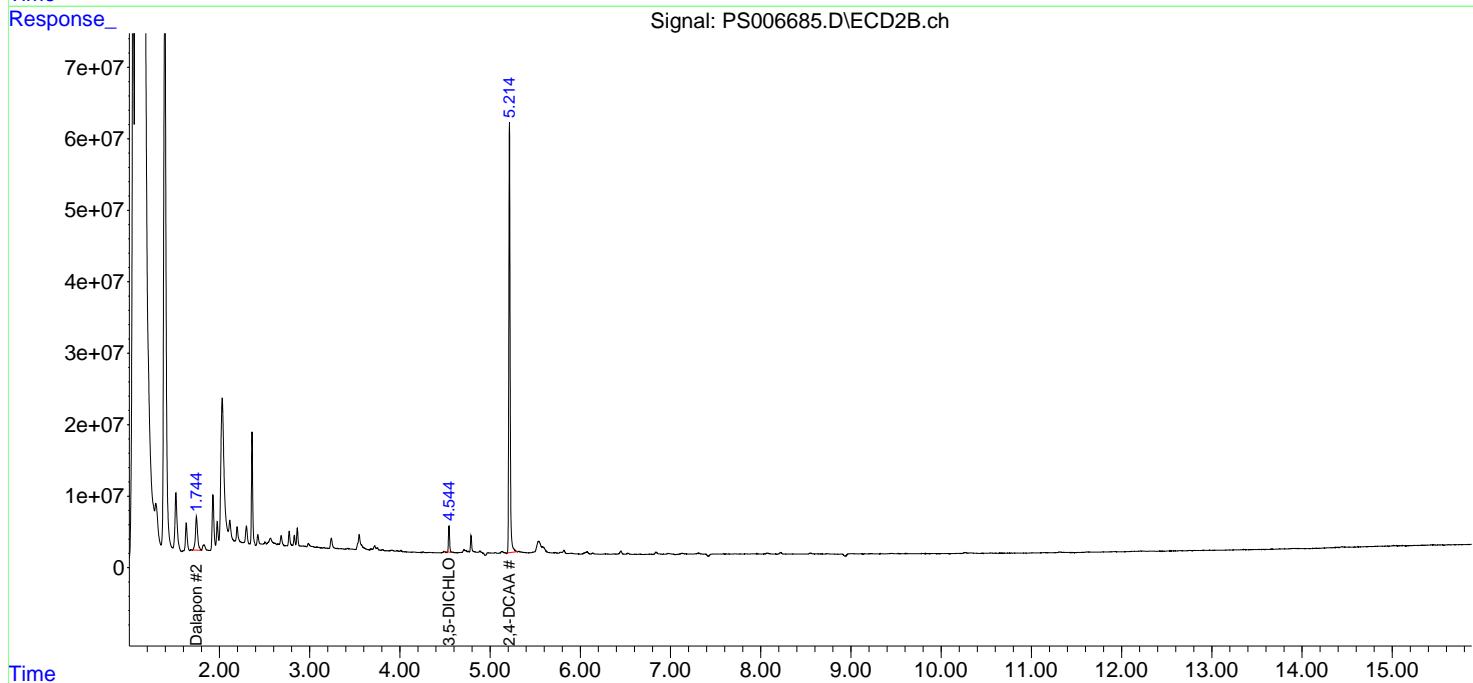
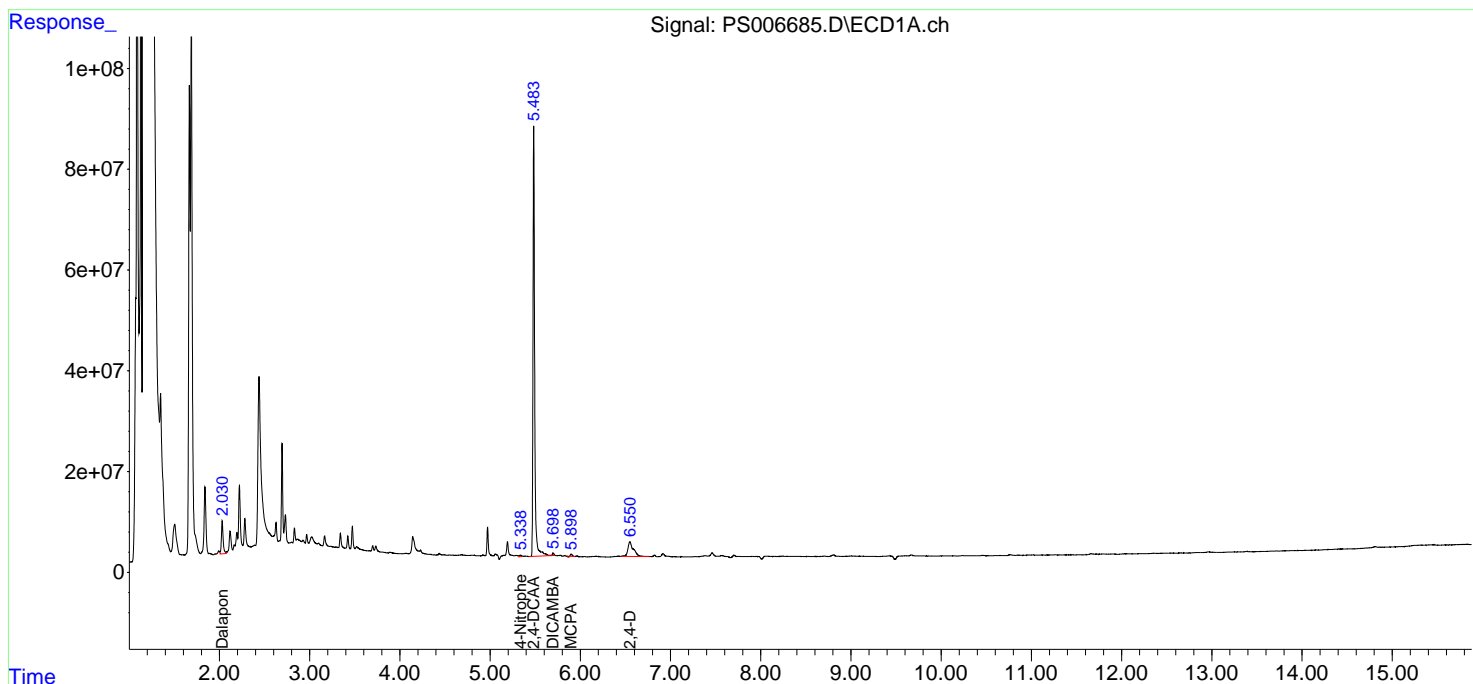
(f)=RT Delta > 1/2 Window (#)=Amounts differ by > 25% (m)=manual int.

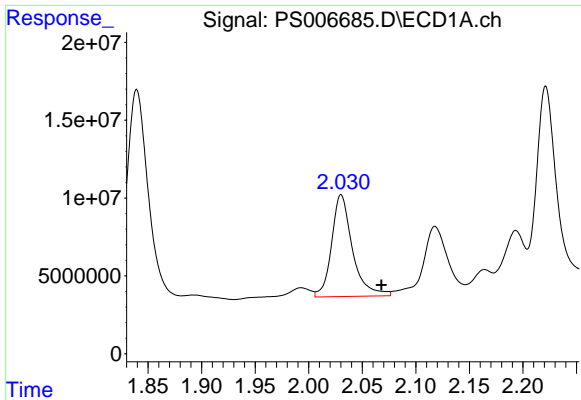
Data Path : Z:\pestpcbsrv\HPCHEM1\ECD_S\Data\PS091219\
Data File : PS006685.D
Signal(s) : Signal #1: ECD1A.ch Signal #2: ECD2B.ch
Acq On : 12 Sep 2019 21:33
Operator : SM\AJ
Sample : K4825-15
Misc :
ALS Vial : 11 Sample Multiplier: 1

Instrument :
ECD_S
ClientSampled :
CSA-4-1

Integration File signal 1: autoint1.e
Integration File signal 2: autoint2.e
Quant Time: Sep 13 04:53:03 2019
Quant Method : Z:\pestpcbsrv\HPCHEM1\ECD_S\Method\PS090919.M
Quant Title : 8080.M
QLast Update : Tue Sep 10 06:14:42 2019
Response via : Initial Calibration
Integrator: ChemStation

Volume Inj. : 2 µl
Signal #1 Phase : Rtx-CLPesticides Signal #2 Phase: Rtx-CLPesticides2
Signal #1 Info : 30M x 0.32mm x 0.5 Signal #2 Info : 30M x 0.32mm x 0.25µm

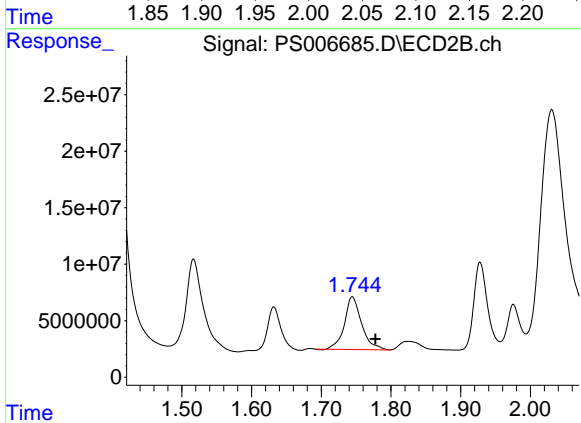




#1 Dalapon

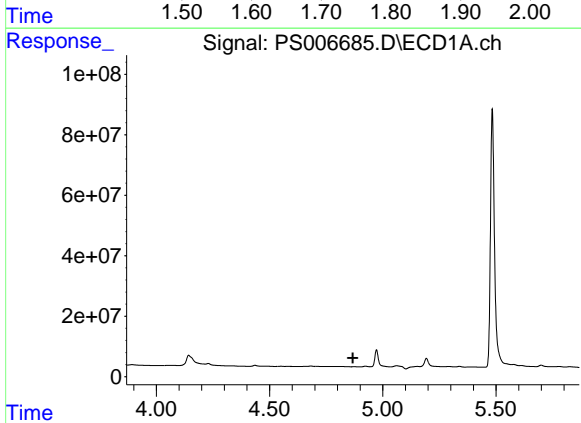
R.T.: 2.030 min
 Delta R.T.: -0.038 min
 Response: 88575537
 Conc: 90.62 ng/ml

Instrument :
 ECD_S
 ClientSampled :
 CSA-4-1



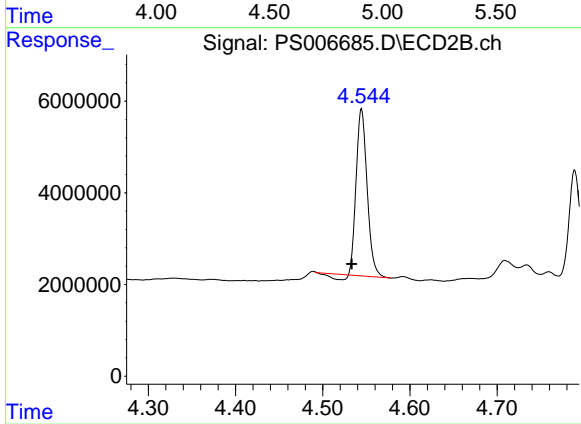
#1 Dalapon

R.T.: 1.745 min
 Delta R.T.: -0.033 min
 Response: 79531070
 Conc: 155.62 ng/ml



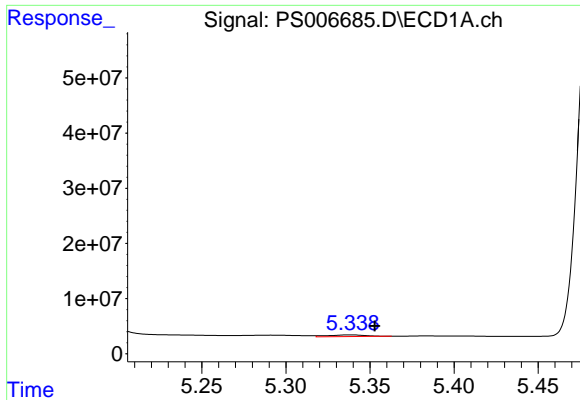
#2 3,5-DICHLOROBENZOIC ACID

R.T.: 0.000 min
 Exp R.T. : 4.868 min
 Response: 0
 Conc: N.D.



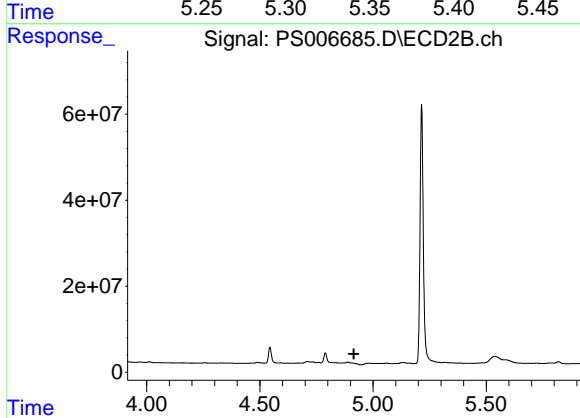
#2 3,5-DICHLOROBENZOIC ACID

R.T.: 4.545 min
 Delta R.T.: 0.011 min
 Response: 30962448
 Conc: 57.21 ng/ml

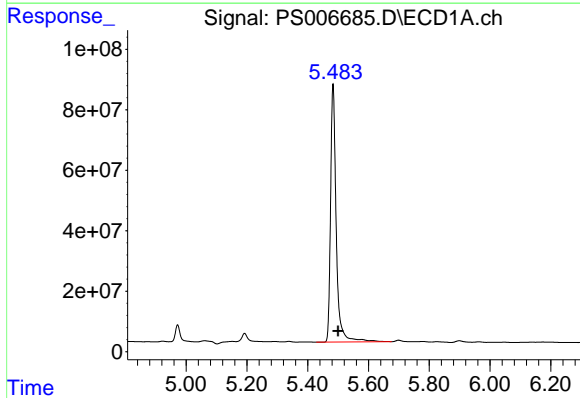


#3 4-Nitrophenol
 R.T.: 5.338 min
 Delta R.T.: -0.015 min
 Response: 4772507
 Conc: 13.45 ng/ml

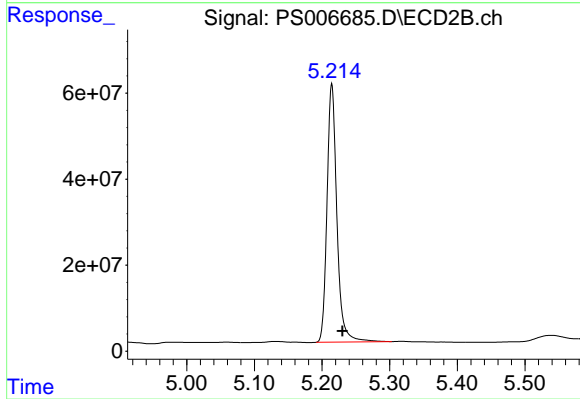
Instrument :
 ECD_S
 ClientSampled :
 CSA-4-1



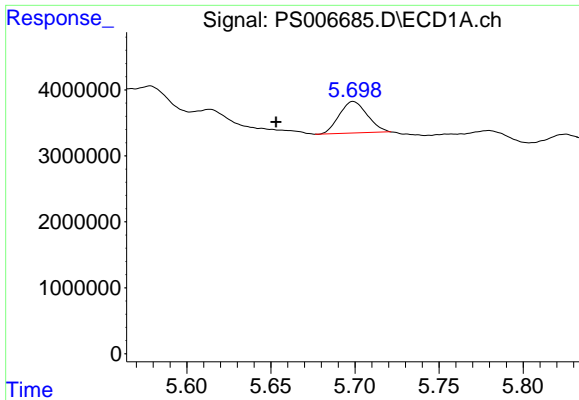
#3 4-Nitrophenol
 R.T.: 0.000 min
 Exp R.T. : 4.915 min
 Response: 0
 Conc: N.D.



#4 2,4-DCAA
 R.T.: 5.484 min
 Delta R.T.: -0.017 min
 Response: 1106369681
 Conc: 1424.11 ng/ml



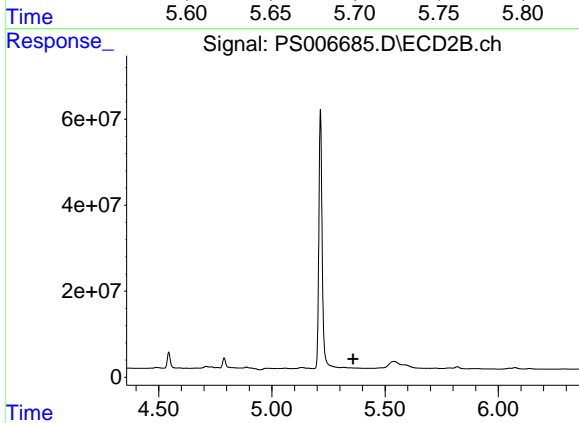
#4 2,4-DCAA
 R.T.: 5.215 min
 Delta R.T.: -0.016 min
 Response: 609532335
 Conc: 1427.47 ng/ml



#5 DICAMBA

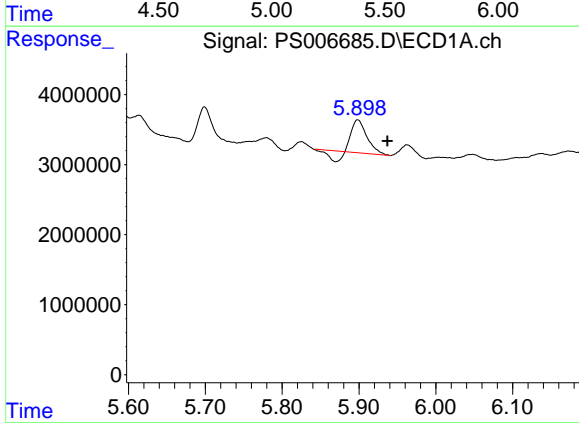
R.T.: 5.699 min
 Delta R.T.: 0.046 min
 Response: 5632150
 Conc: 1.95 ng/ml

Instrument :
 ECD_S
 ClientSampled :
 CSA-4-1



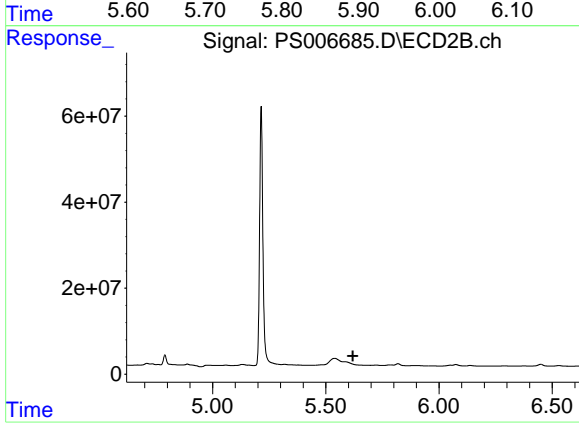
#5 DICAMBA

R.T.: 0.000 min
 Exp R.T. : 5.358 min
 Response: 0
 Conc: N.D.



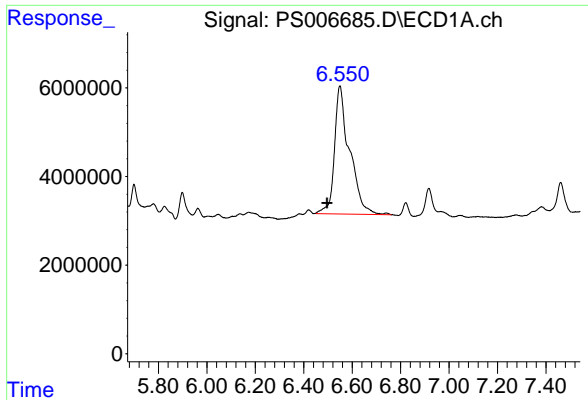
#7 MCPA

R.T.: 5.899 min
 Delta R.T.: -0.038 min
 Response: 5339174
 Conc: 1.89 ug/ml



#7 MCPA

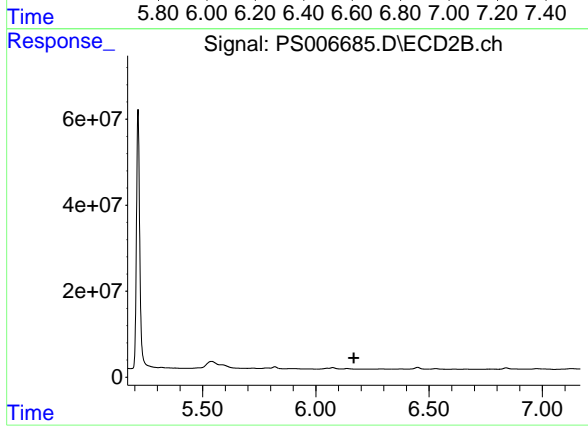
R.T.: 0.000 min
 Exp R.T. : 5.619 min
 Response: 0
 Conc: N.D.



#9 2,4-D

R.T.: 6.549 min
Delta R.T.: 0.052 min
Response: 125502130
Conc: 162.44 ng/ml

Instrument :
ECD_S
ClientSampled :
CSA-4-1



#9 2,4-D

R.T.: 0.000 min
Exp R.T. : 6.168 min
Response: 0
Conc: N.D.